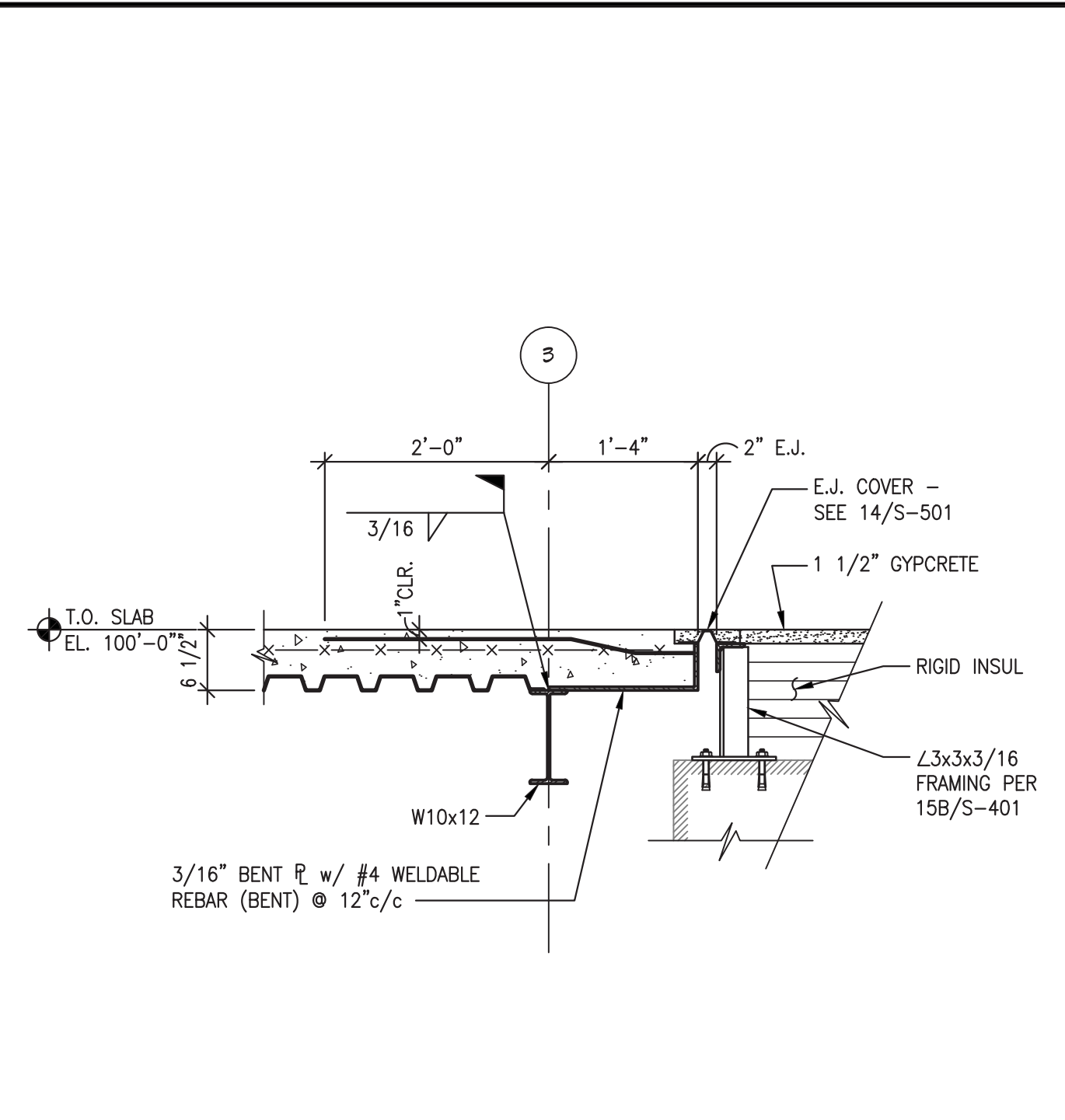
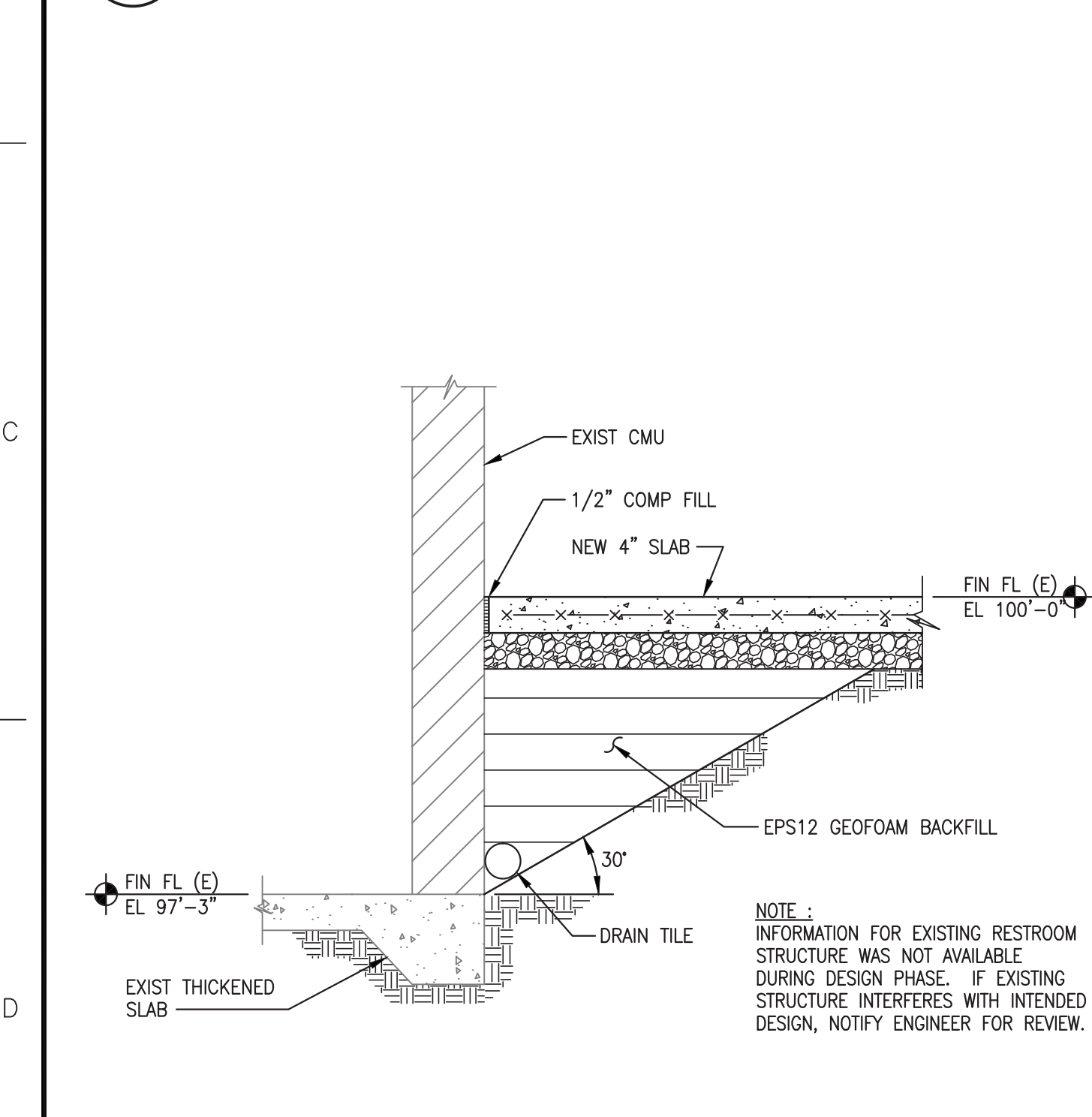


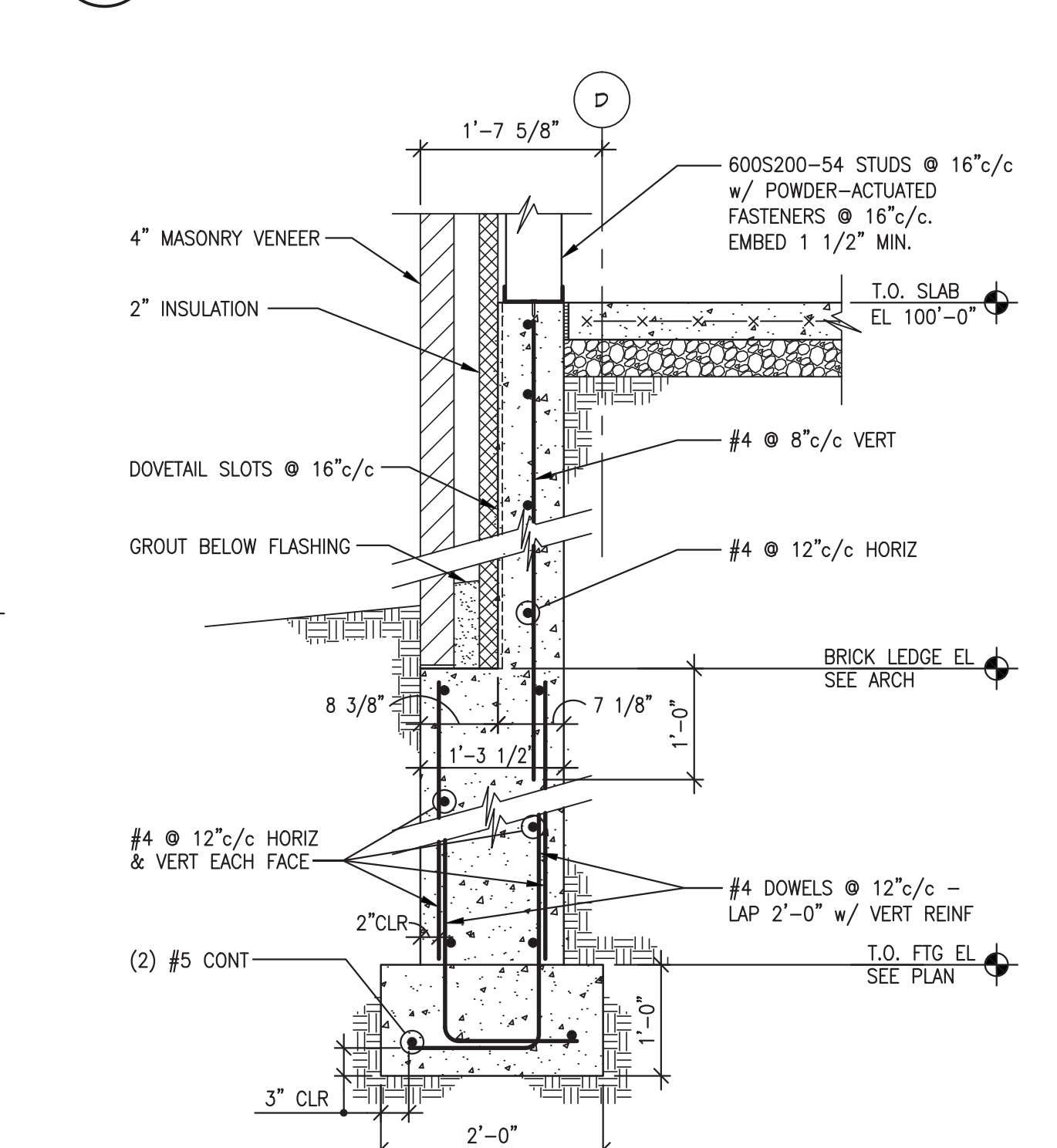
1 FOUNDATION DETAIL
SCALE : 3/4" = 1'-0"



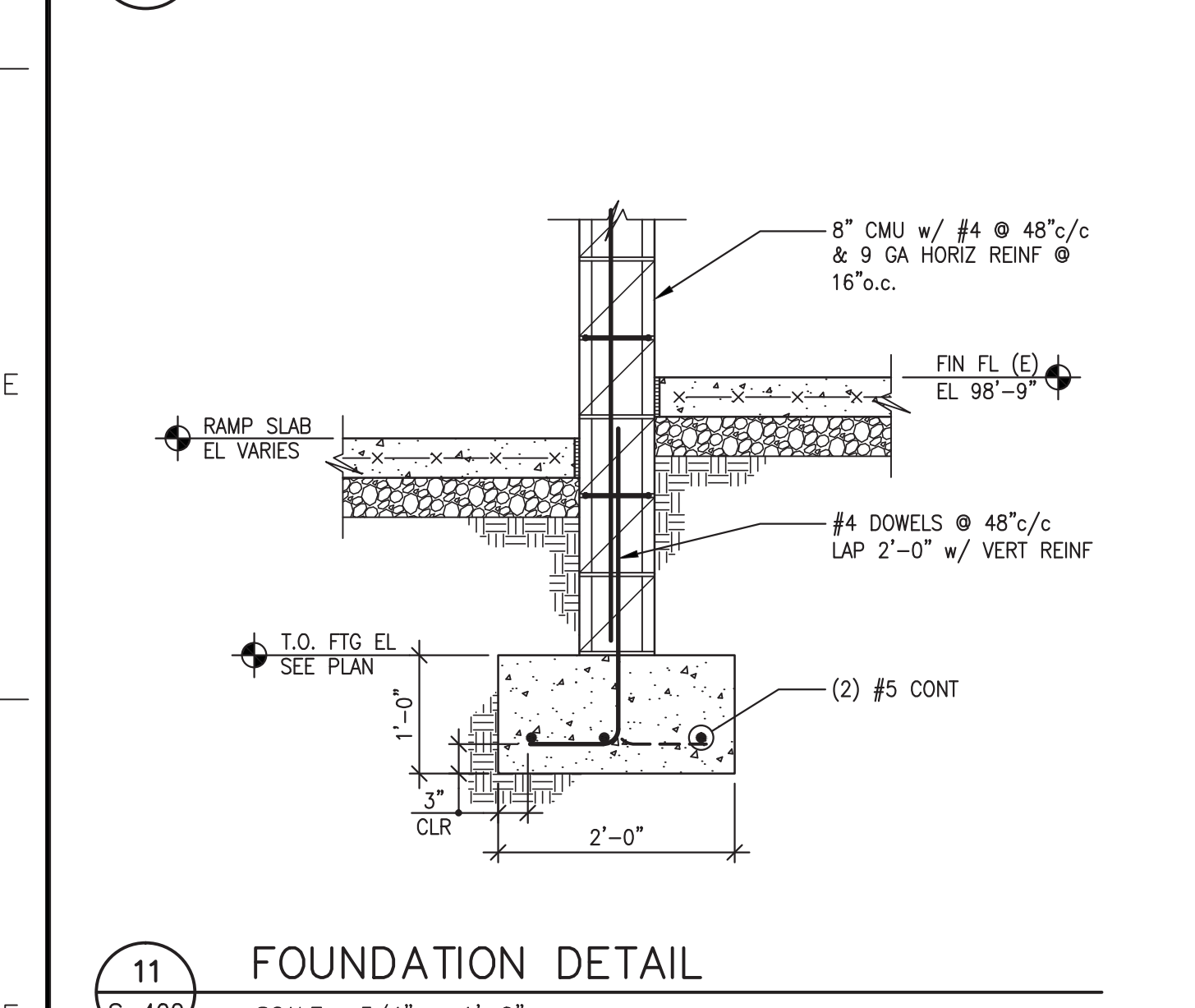
2 FRAMING DETAIL
SCALE : 3/4" = 1'-0"



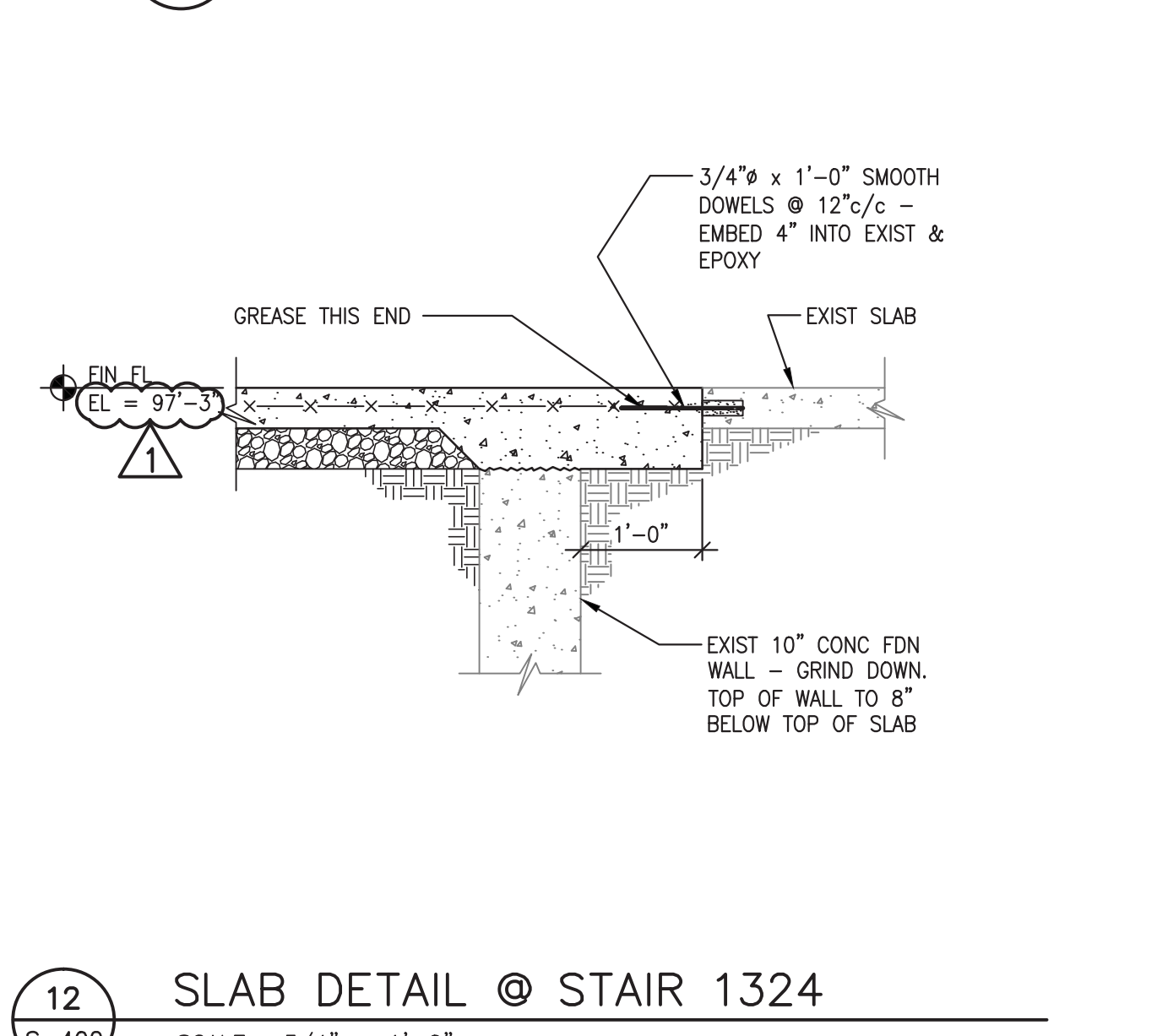
6 FOUNDATION DETAIL
SCALE : 3/4" = 1'-0"



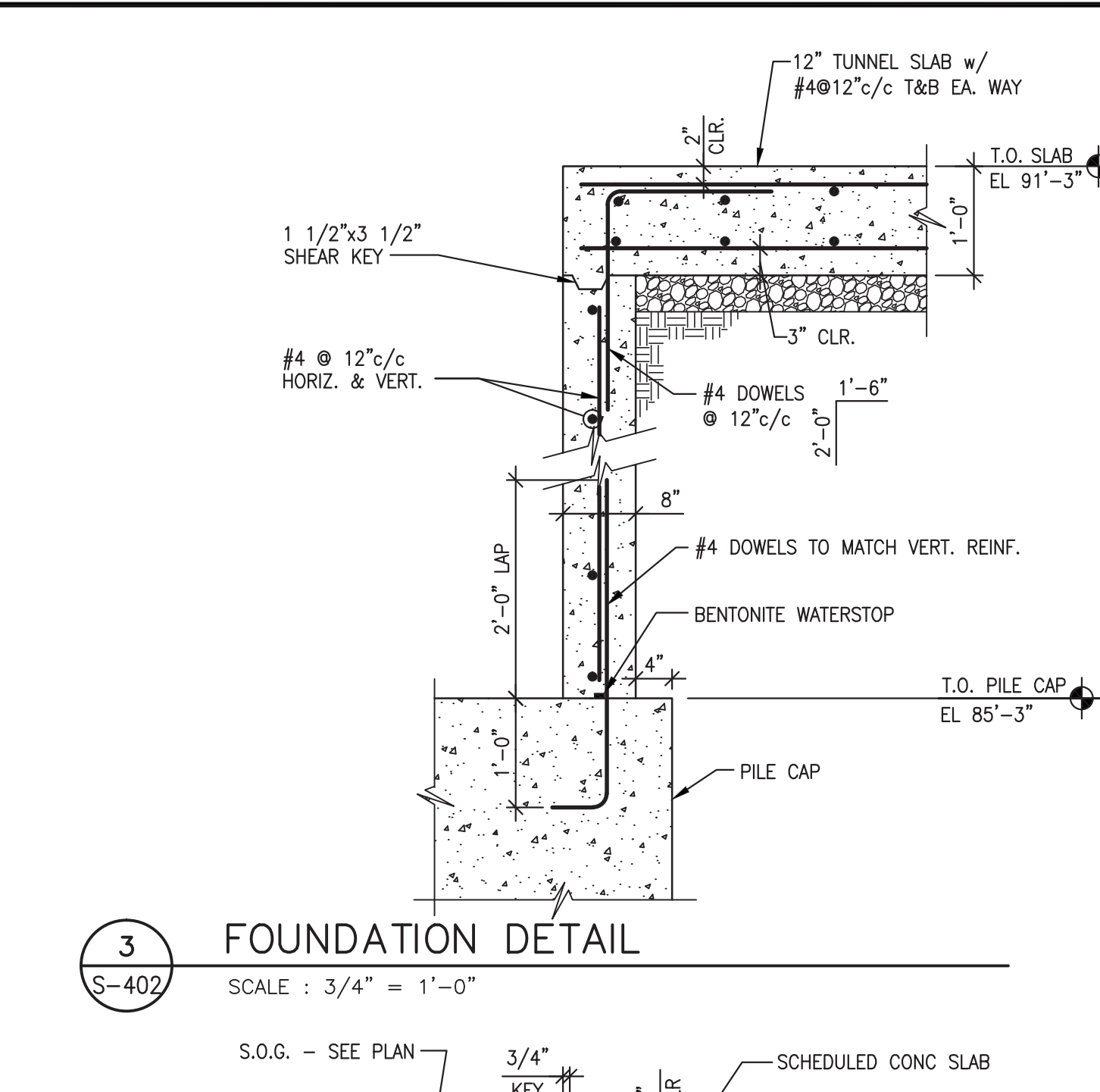
7 FOUNDATION DETAIL
SCALE : 3/4" = 1'-0"



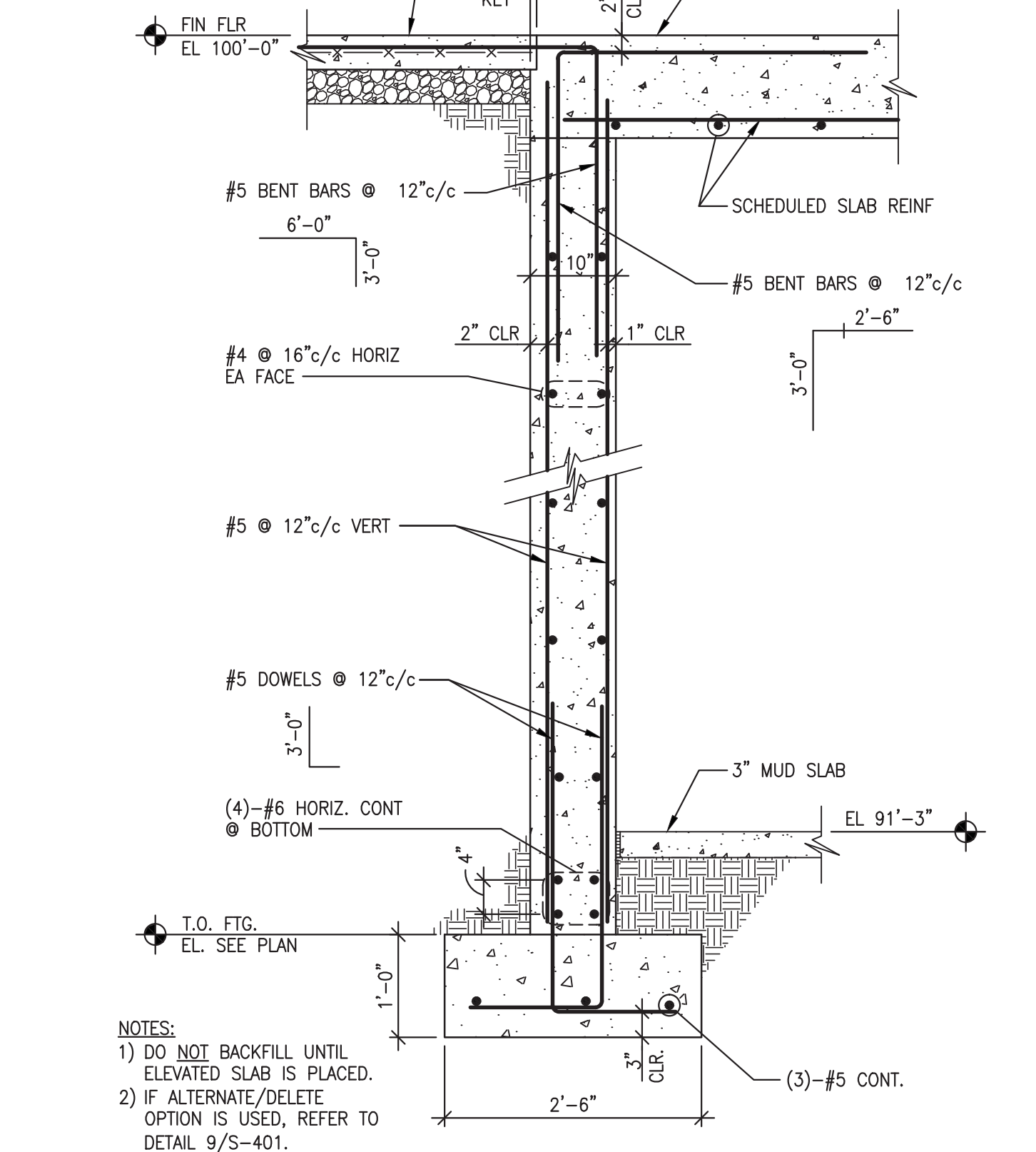
11 FOUNDATION DETAIL
SCALE : 3/4" = 1'-0"



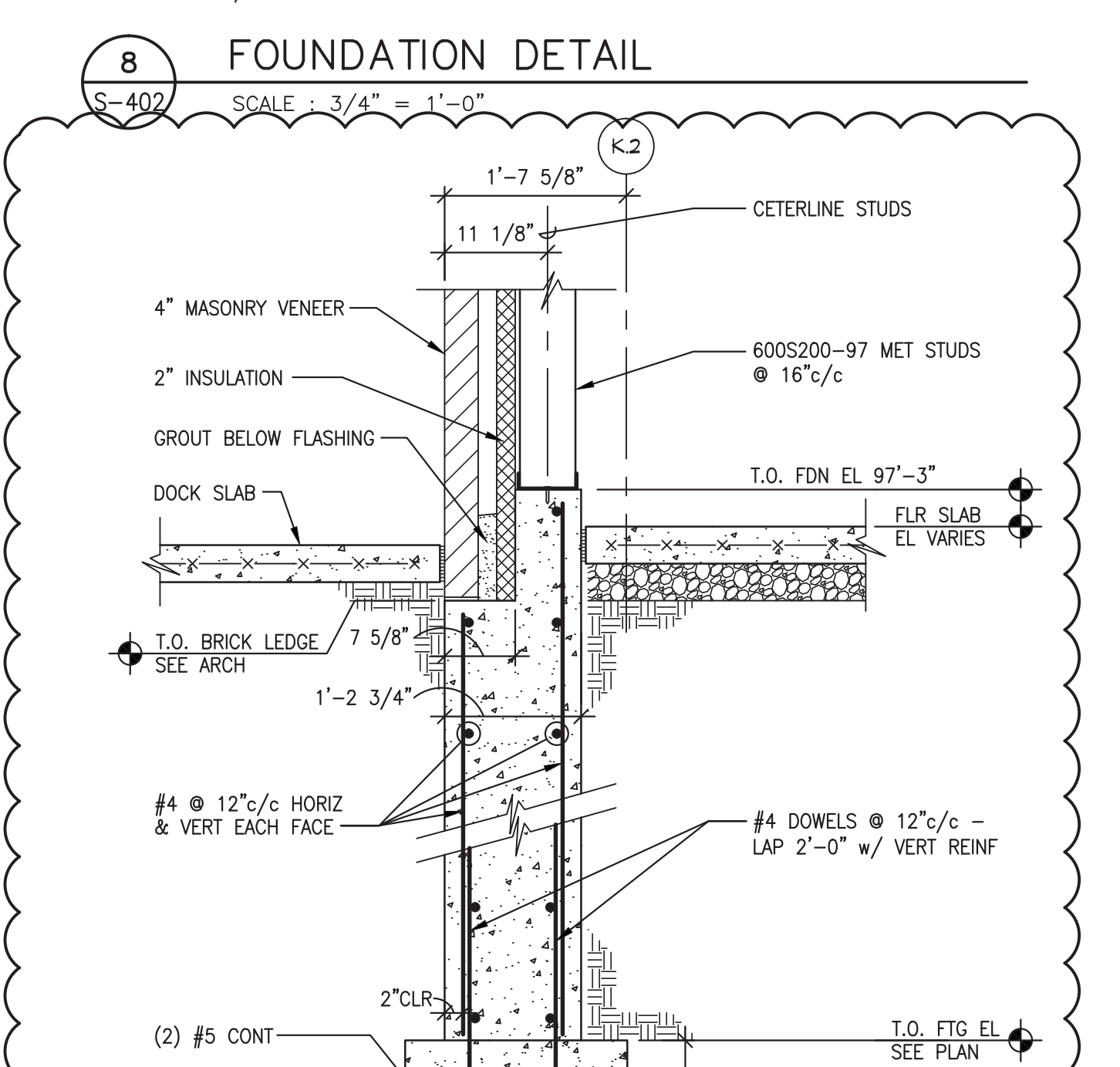
12 SLAB DETAIL @ STAIR 1324
SCALE : 3/4" = 1'-0"



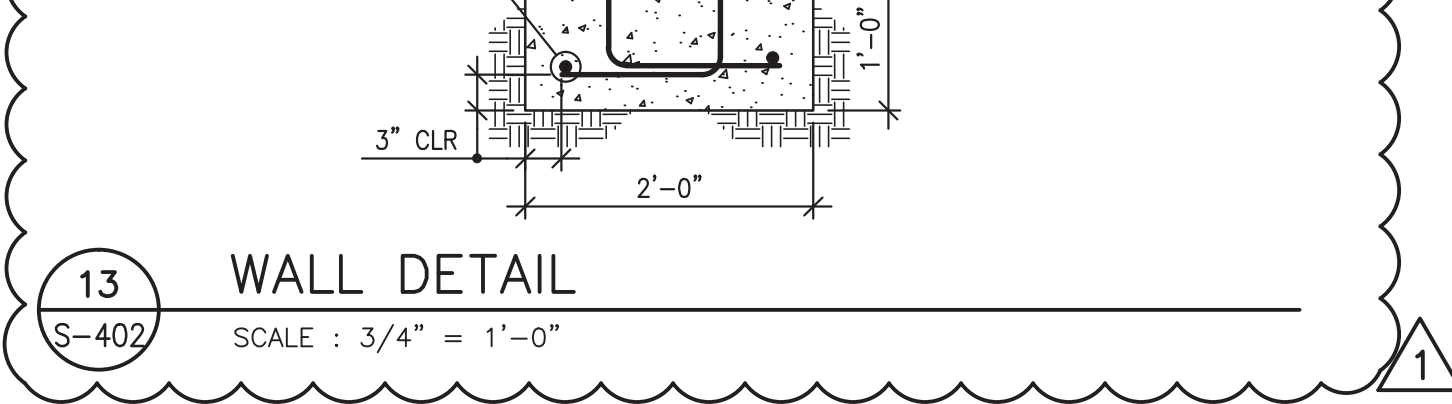
3 FOUNDATION DETAIL
SCALE : 3/4" = 1'-0"



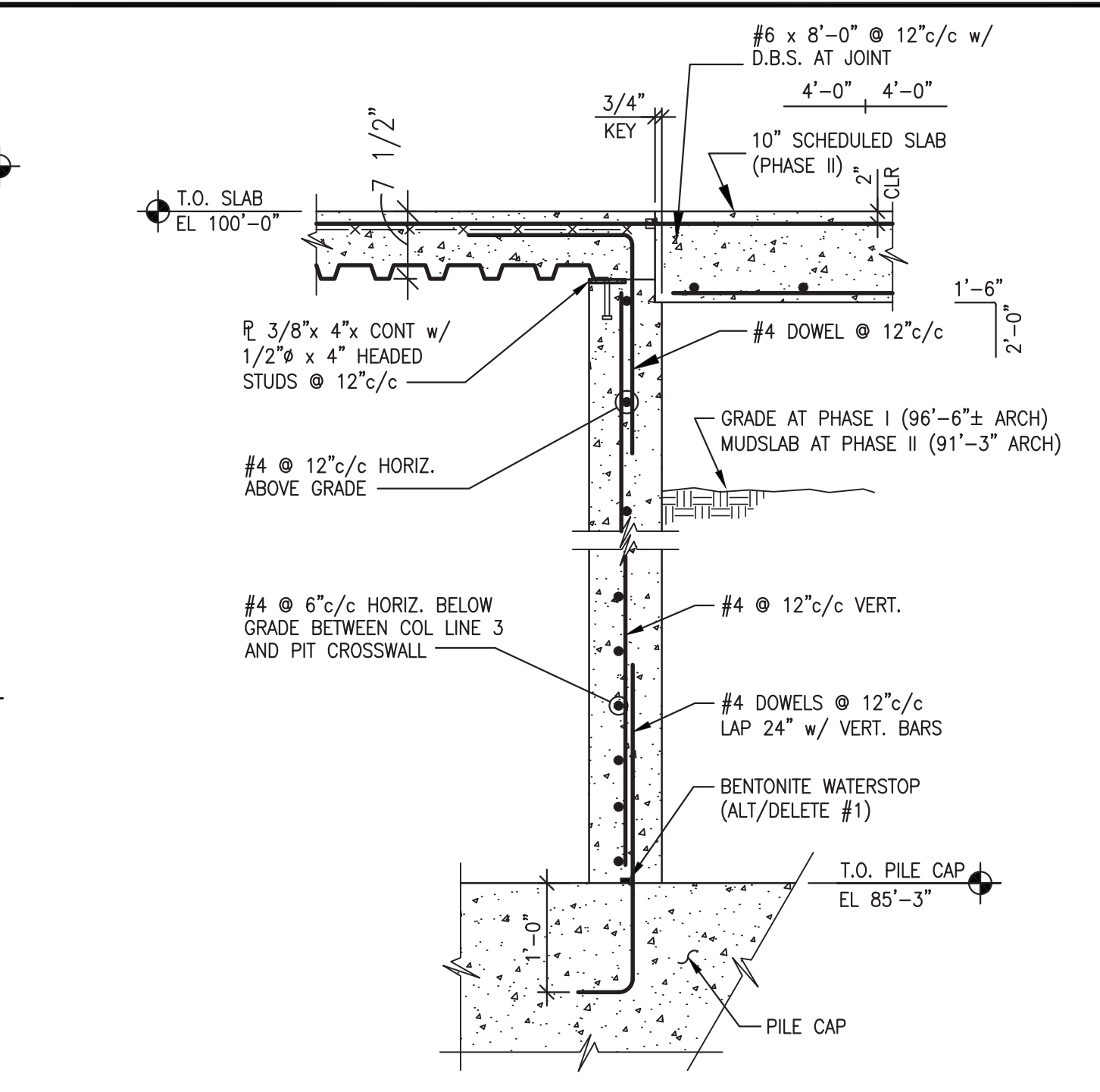
NOTES:
1) DO NOT BACKFILL UNTIL ELEVATED SLAB IS PLACED.
2) IF ALTERNATE/DELETE OPTION IS USED, REFER TO DETAIL 9/S-401.



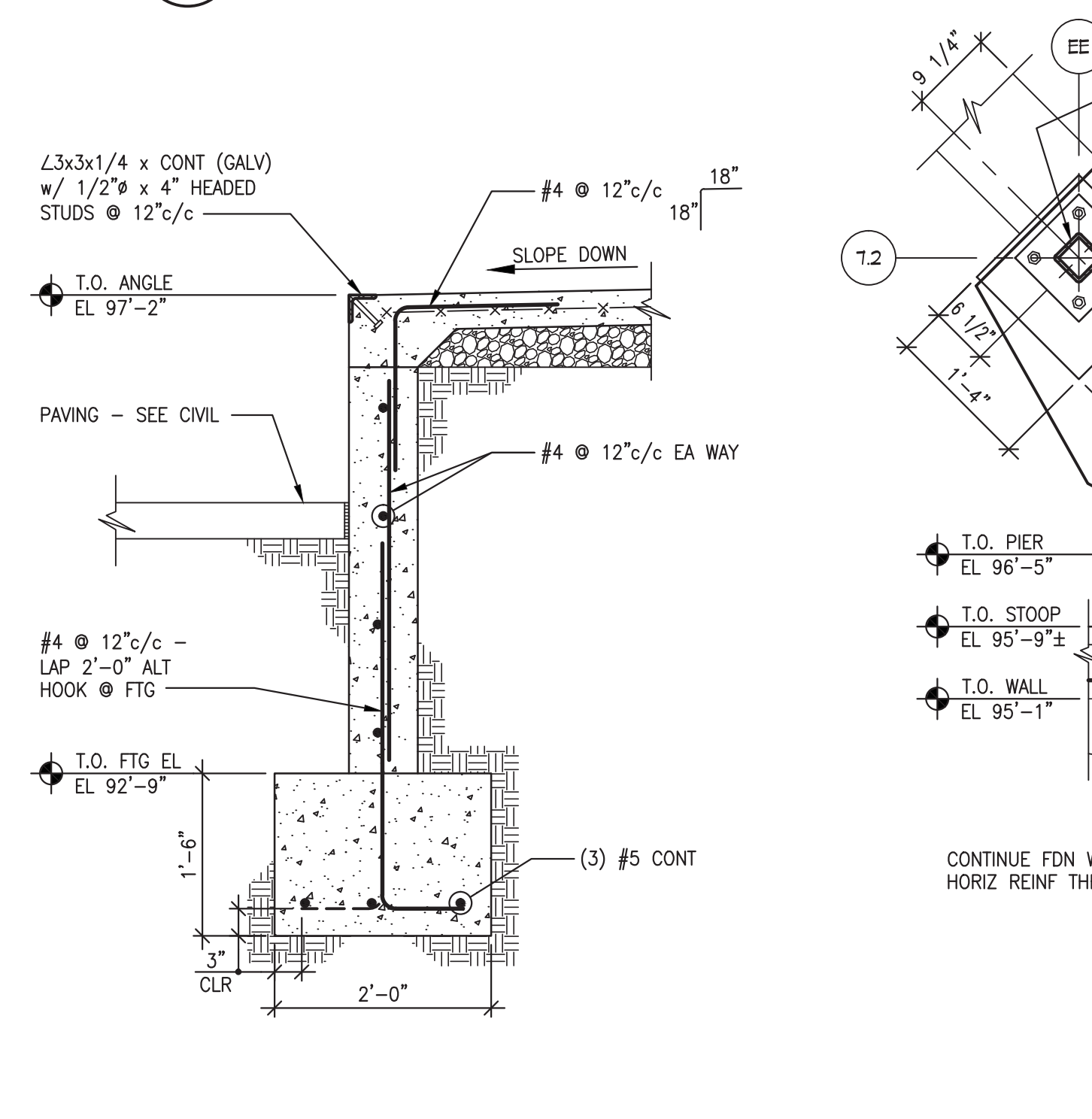
8 FOUNDATION DETAIL
SCALE : 3/4" = 1'-0"



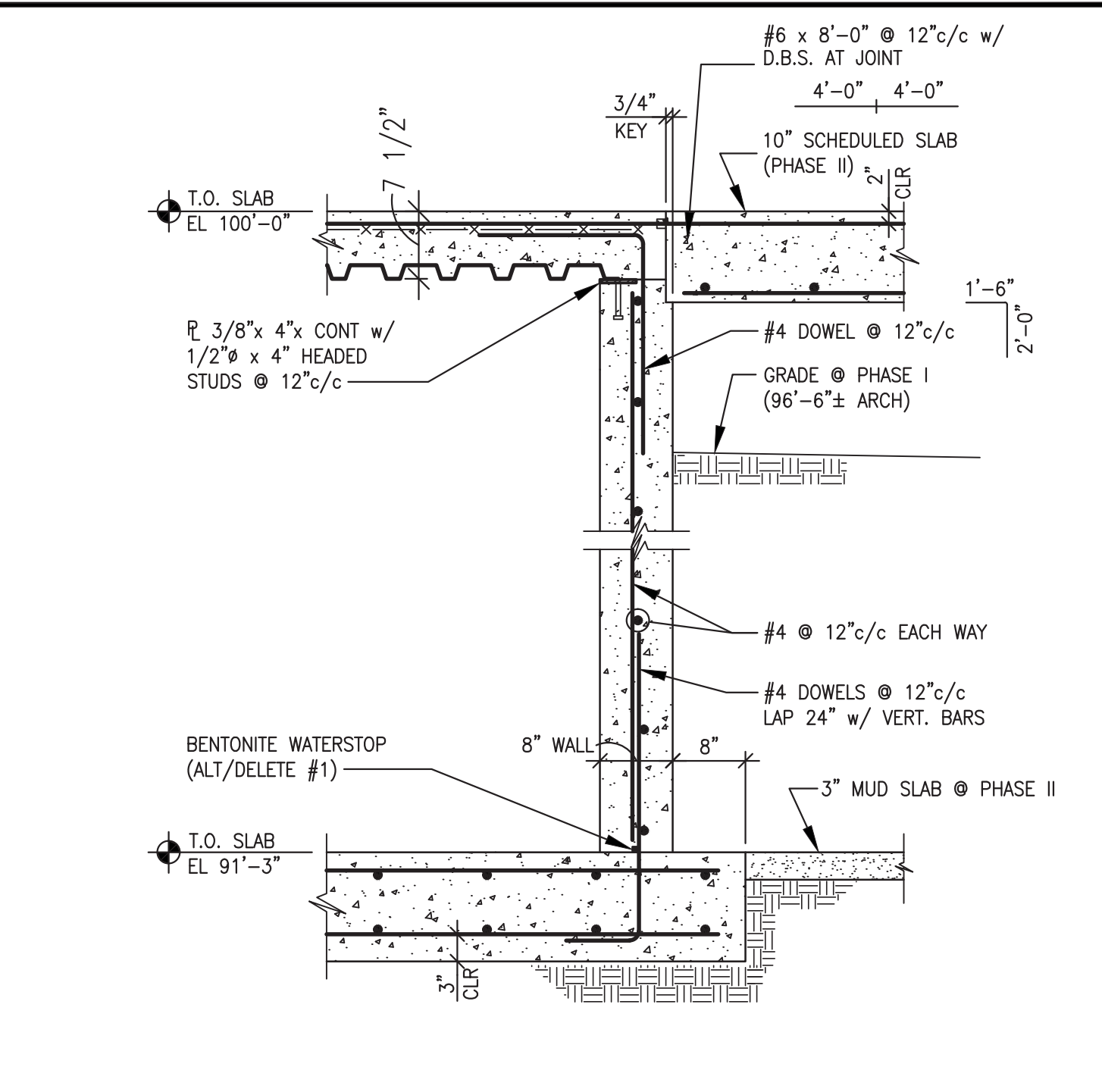
13 WALL DETAIL
SCALE : 3/4" = 1'-0"



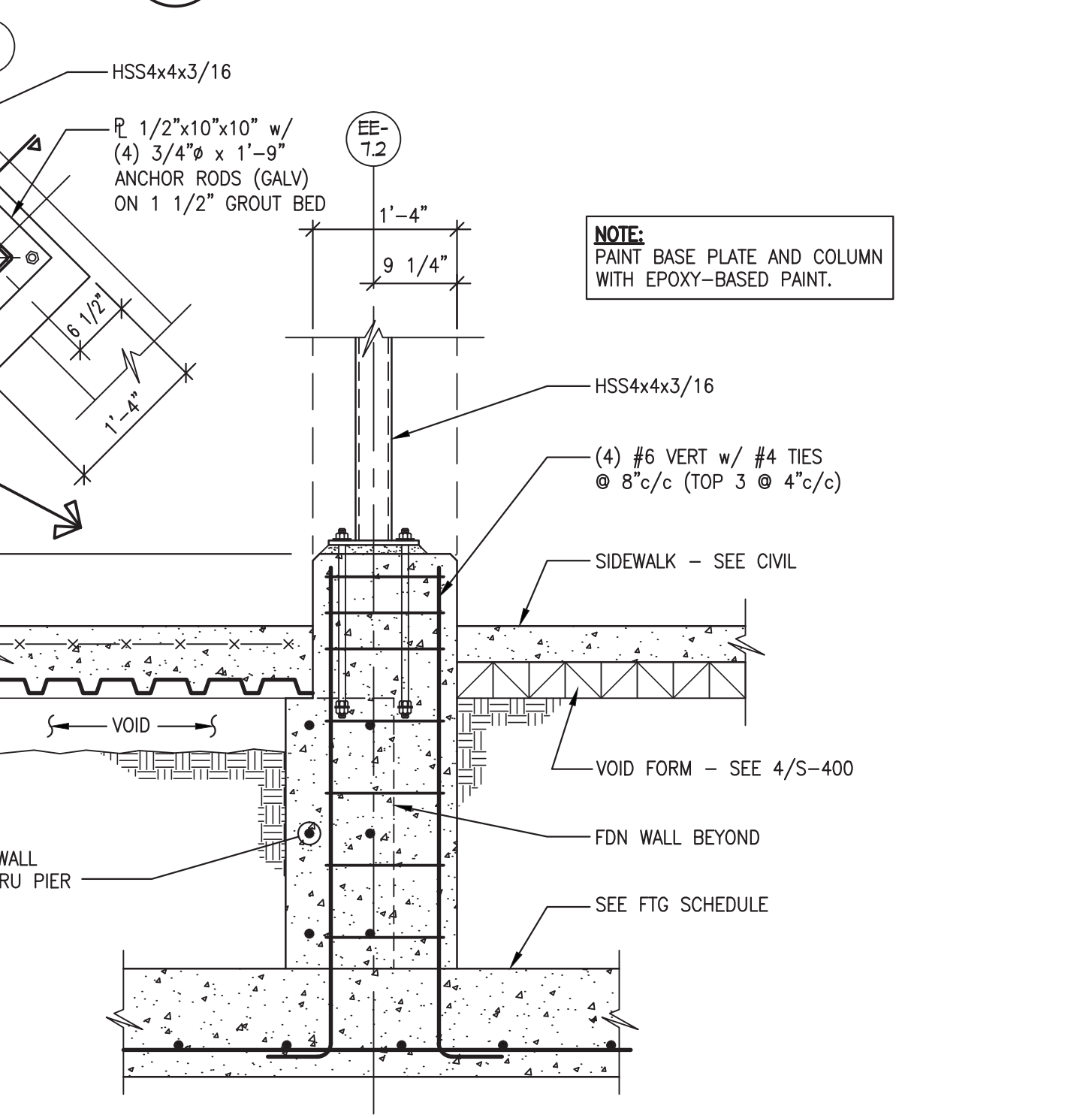
4 FOUNDATION DETAIL
SCALE : 3/4" = 1'-0"



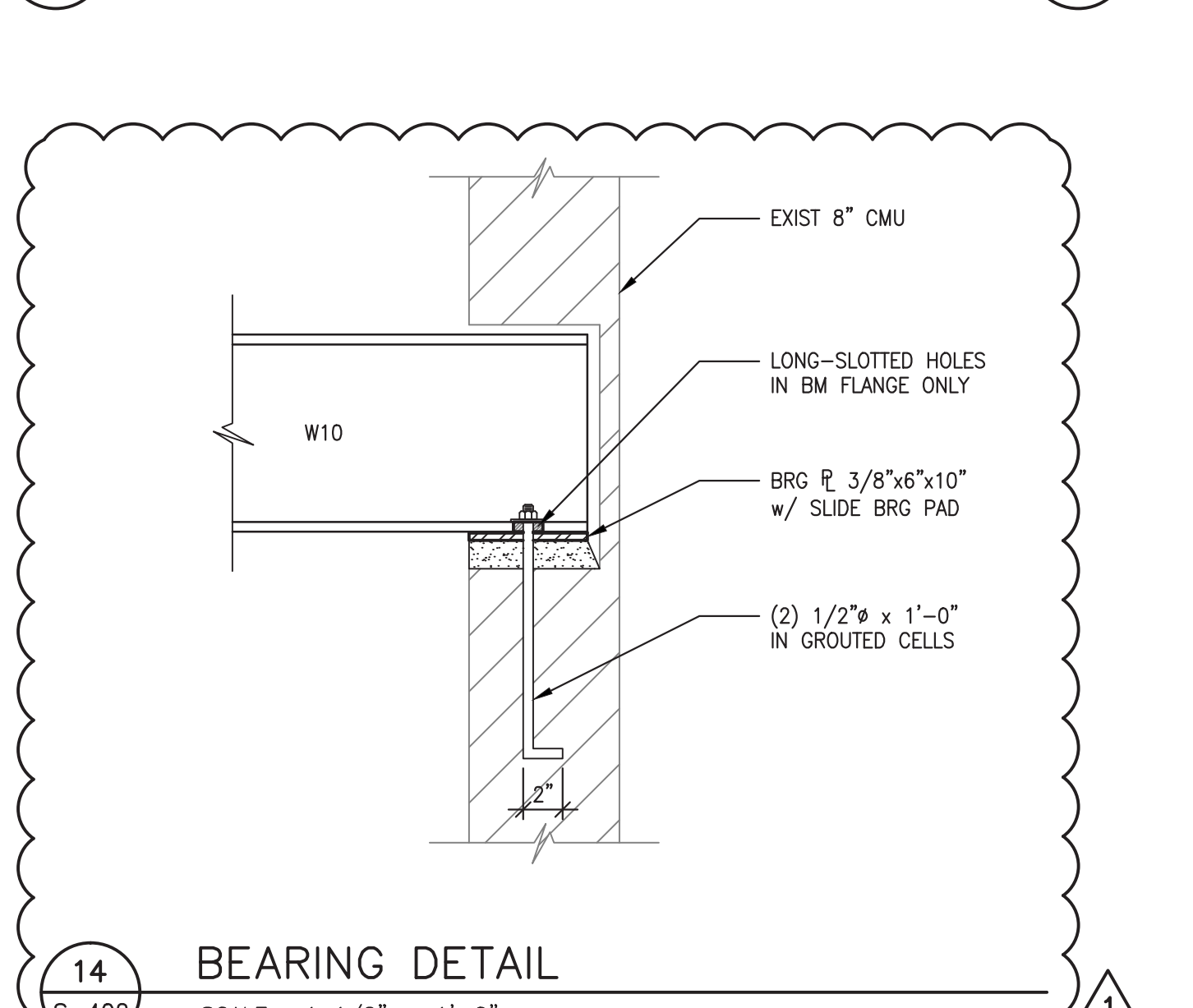
9 FOUNDATION DETAIL
NO SCALE



5 FOUNDATION DETAIL
SCALE : 3/4" = 1'-0"



10 COLUMN PEDESTAL DETAIL
SCALE : 3/4" = 1'-0"



14 BEARING DETAIL
SCALE : 1 1/2" = 1'-0"

</