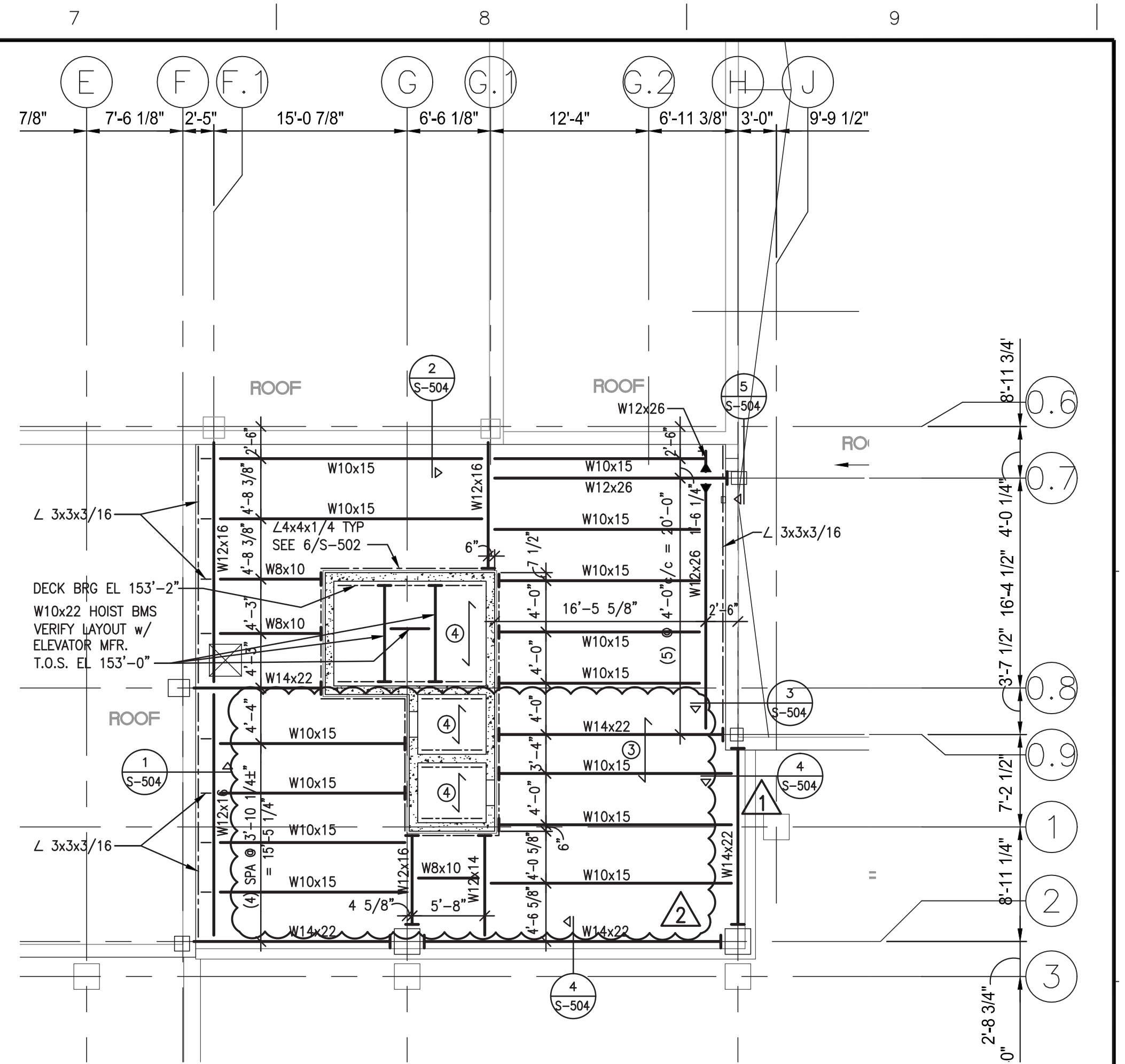
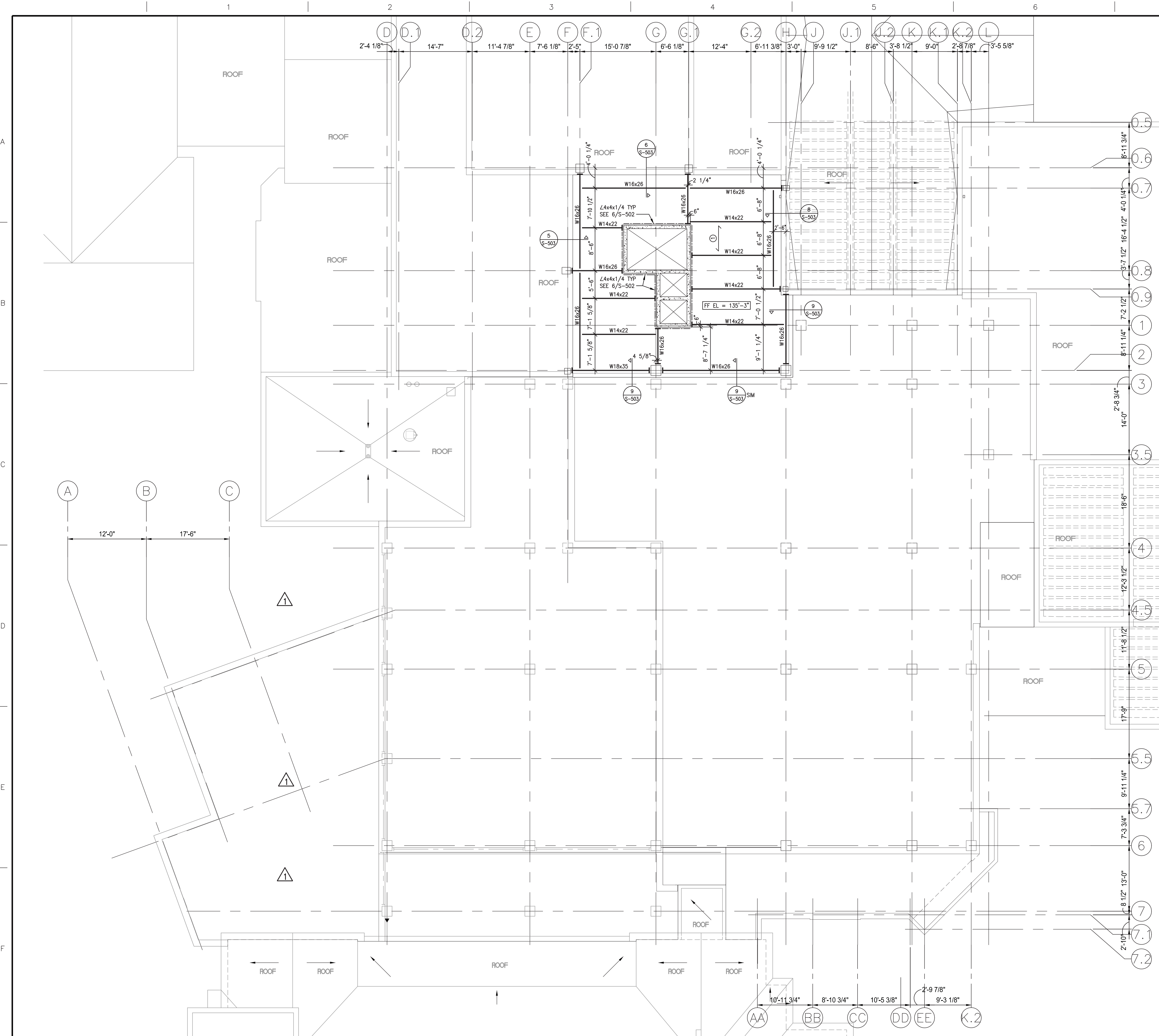


12-0953 KHA Des Moines VA Addition\Struct\12-095_S-206.dwg 8-03-14 01:42:10 PM Tosh



CORE ROOF FRAMING NOTES:

1. TOP OF STEEL ELEVATION = 148'-6" UNLESS NOTED OTHERWISE.
2. INDICATES SPAN DIRECTION OF 2"-20 GAGE COMPOSITE METAL DECK WITH 4 1/2" CONCRETE FILL AND 6x6-W2.1xW2.1 WWF.
3. INDICATES SPAN DIRECTION OF 1 1/2"-22 GAGE TYPE B METAL ROOF DECK.
4. INDICATES SPAN DIRECTION OF 3"-22 GAGE TYPE N METAL ROOF DECK.

2 CORE AND ELEVATOR SHAFT ROOF FRAMING PLANS

0 8 16 24 1/8"

FOURTH FLOOR ELEVATOR AREA FLOOR FRAMING NOTES:

1. TOP OF STEEL ELEVATION = 134'-8 1/2" UNLESS NOTED OTHERWISE.
2. INDICATES SPAN DIRECTION OF 2"-20 GAGE COMPOSITE METAL DECK WITH 4 1/2" CONCRETE FILL AND 6x6-W1.4xW1.4 WWF.
3. INDICATES EMBED PLATE LOCATION SEE 4/S-502 FOR CONNECTION TO NEW CONCRETE, AND 5/S-502 FOR CONNECTION TO EXISTING CONCRETE.

1 ROOF / FOURTH FLOOR FRAMING PLAN (PHASE TWO)

0 8 16 24 1/8"

#	Revisions	Date
02		08-07-14
01		05-30-14

CONSULTANTS:
NIELSEN - BAUMERT ENGINEERING INC.
9802 NICHOLAS STREET, SUITE 105 Omaha, NE 68114
(402) 496-4750 FAX (402) 496-1147

ARCHITECT/ENGINEERS:
KHA
Kenneth Hahn Architects
1343 South 75th Street | Omaha, NE 68124-1610 | 402.391.2111 | www.kharch.com
AE Project # 171-001

Drawing Title
ROOF/FOURTH FLOOR FRAMING PLAN (PHASE TWO)
Approved Project Director

Project Title
BUILD SUPPLY, PROCESSING AND DISTRIBUTION
Location
VAMC DES MOINES IOWA
Date
13 FEBRUARY 2014
Checked
KPK
Drawn
Tosh/JLM

Project Number
636-121
Building Number
BUILDING 1W
Drawing Number
S-206
Dwg. 84 of 235

Office of Construction and Facilities Management
Department of Veterans Affairs