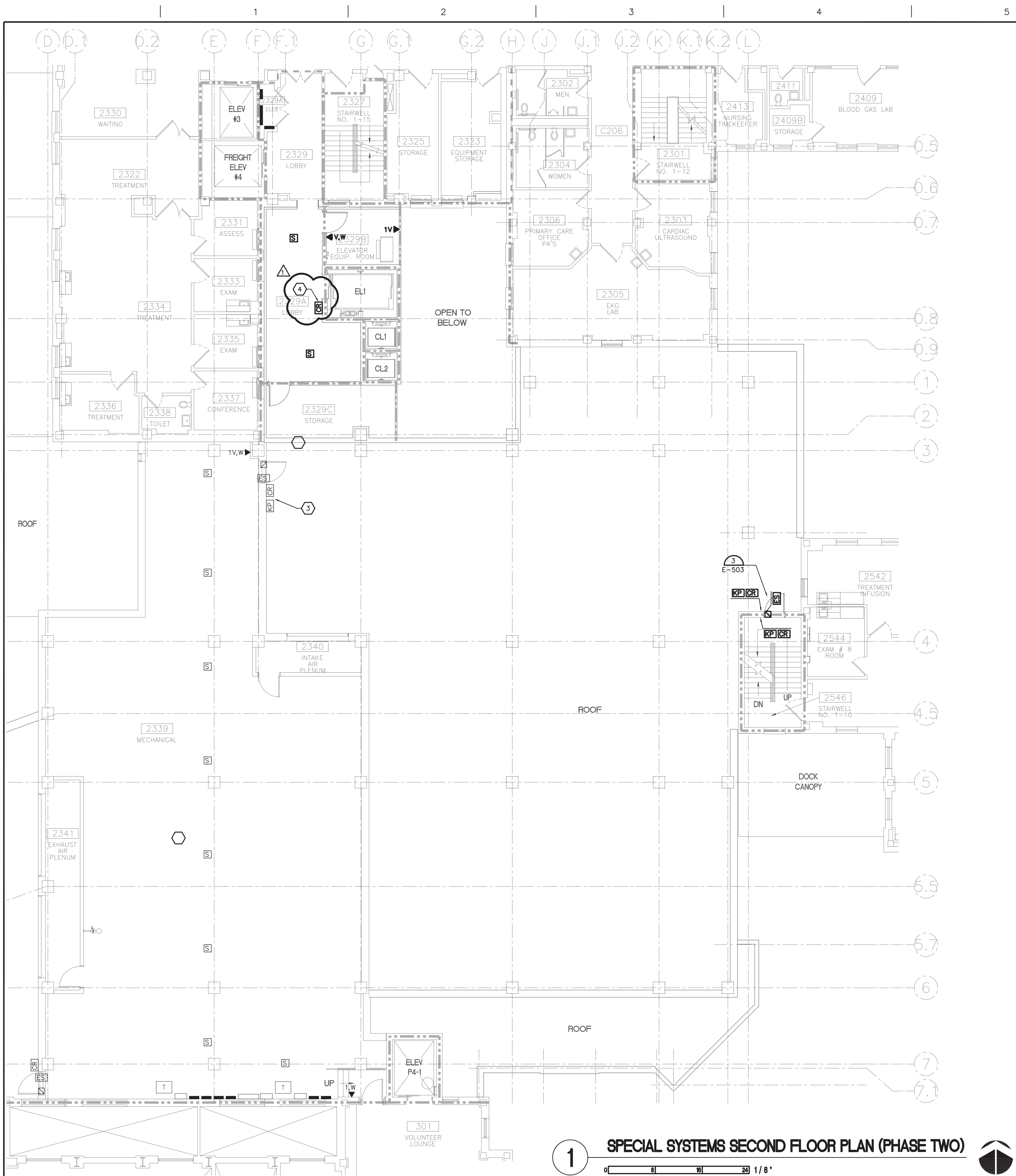


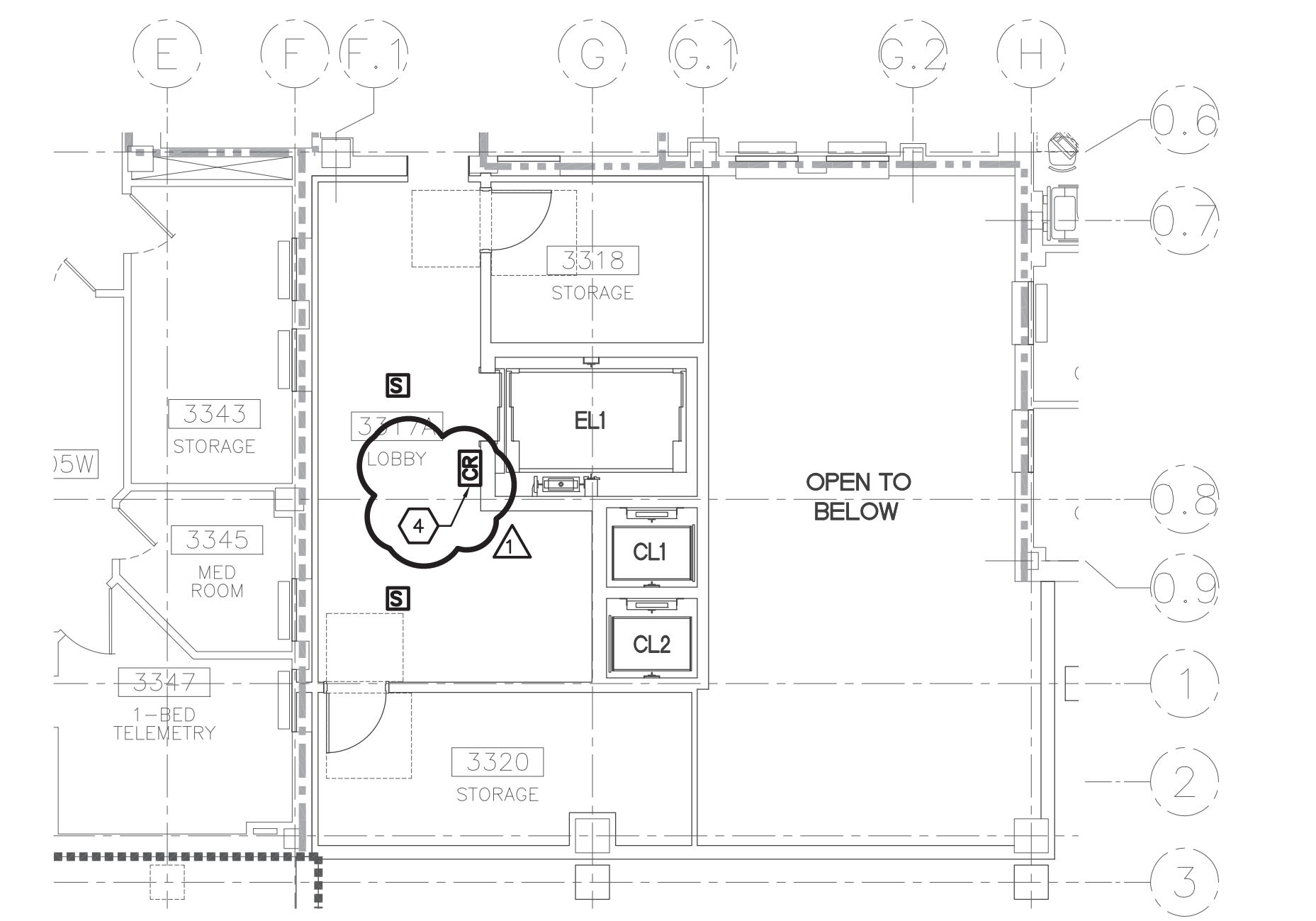
three inches = one foot  
one and one half inches = one foot  
one inch = one foot  
three quarters inch = one foot  
one half inch = one foot  
three eighths inch = one foot  
one quarter inch = one foot  
one eighth inch = one foot  
C:\Autoback\Temp\Acad\p121\_LY122.dwg 8-07-14 11:22:46 AM EMN



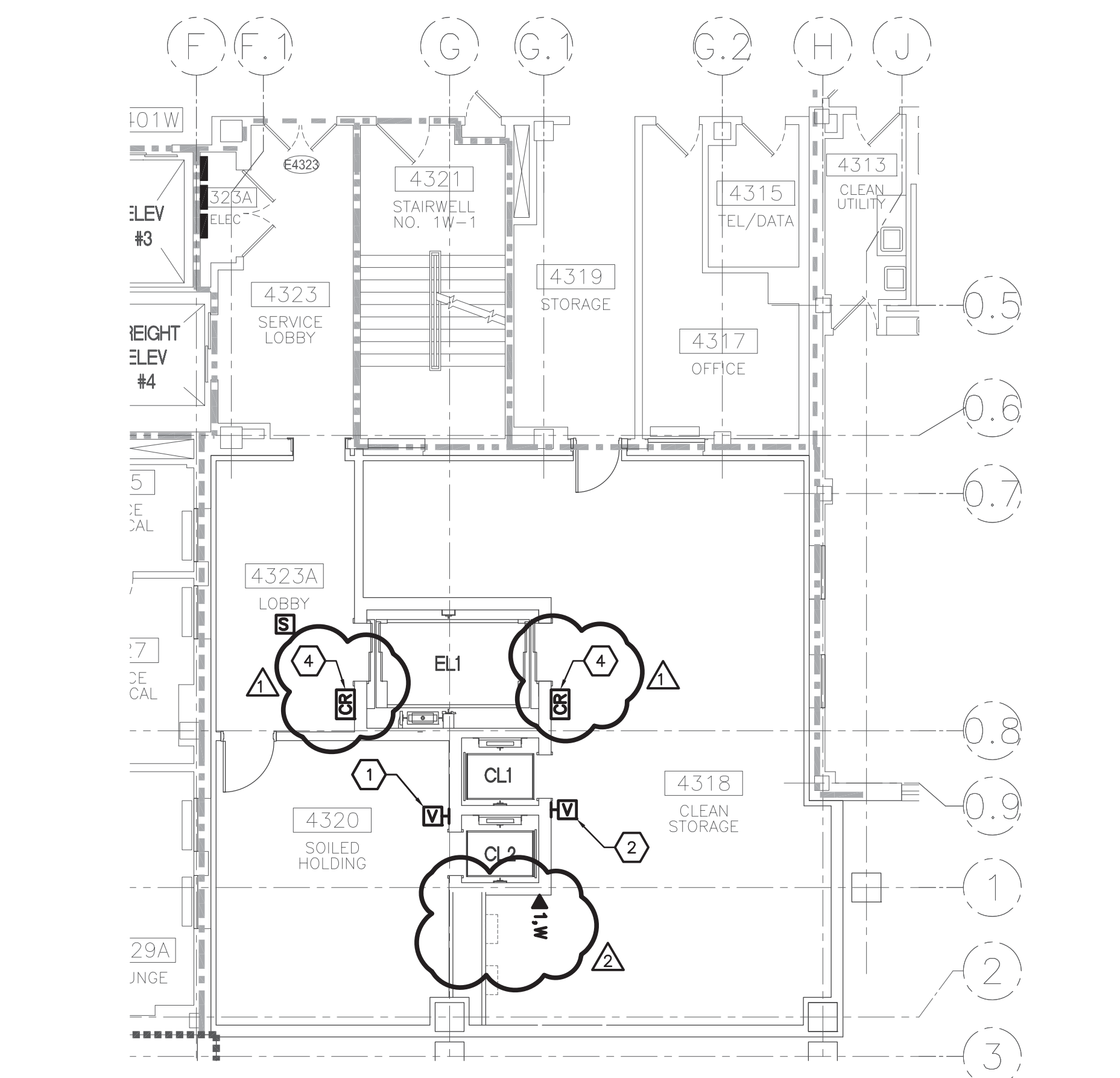
1 SPECIAL SYSTEMS SECOND FLOOR PLAN (PHASE TWO)

ELECTRICAL KEYNOTES: (⬡)

- 1 INTERCOM STATION TO DECONTAMINATION.
- 2 INTERCOM STATION TO PREP AND STERILE.
- 3 PROVIDE DEVICES AT ROUGH-INS FROM PHASE 1.
- 4 CARD READER SHALL COMMUNICATE WITH ELEVATOR CONTROL PANEL TO PERMIT THE ELEVATOR CALL BUTTONS TO OPERATE WHEN PROX CARD IS SWIPE AT CARD READER.



2 SPECIAL SYSTEMS THIRD FLOOR PLAN (PHASE TWO)



3 SPECIAL SYSTEMS FOURTH FLOOR PLAN (PHASE TWO)

-	-	CONSULTANTS:	<div><div><div><div></div><div></div><div></div><div></div></div><div><div>FARRIS ENGINEERING</div><div>OMAHA   LINCOLN   DES MOINES   COLORADO SPRINGS</div><div>farris-uso.com</div></div><div>FE#124014</div></div></div>		ARCHITECT/ENGINEERS:	<div><div><div><div>KhA</div><div></div></div><div><div>Kenneth Hahn Architects</div></div></div><div>1343 South 75th Street   Omaha, NE 68124-1610   402.391.2111   www.kharch.com</div></div> <div>AE Project # 171-001</div>	Drawing Title SPECIAL SYSTEMS FLOOR PLANS (PHASE TWO)	Project Title BUILD SUPPLY, PROCESSING AND DISTRIBUTION	Project Number 636-121	Building Number BUILDING 1W	Office of Construction and Facilities Management
-	-										
-	-										
-	-										
-	-										
-	-										
-	-										
#2	08-07-14										
#1	05-30-14										
Revisions:	Date										

Department of Veterans Affairs			
-----------------------------------	--	--	--