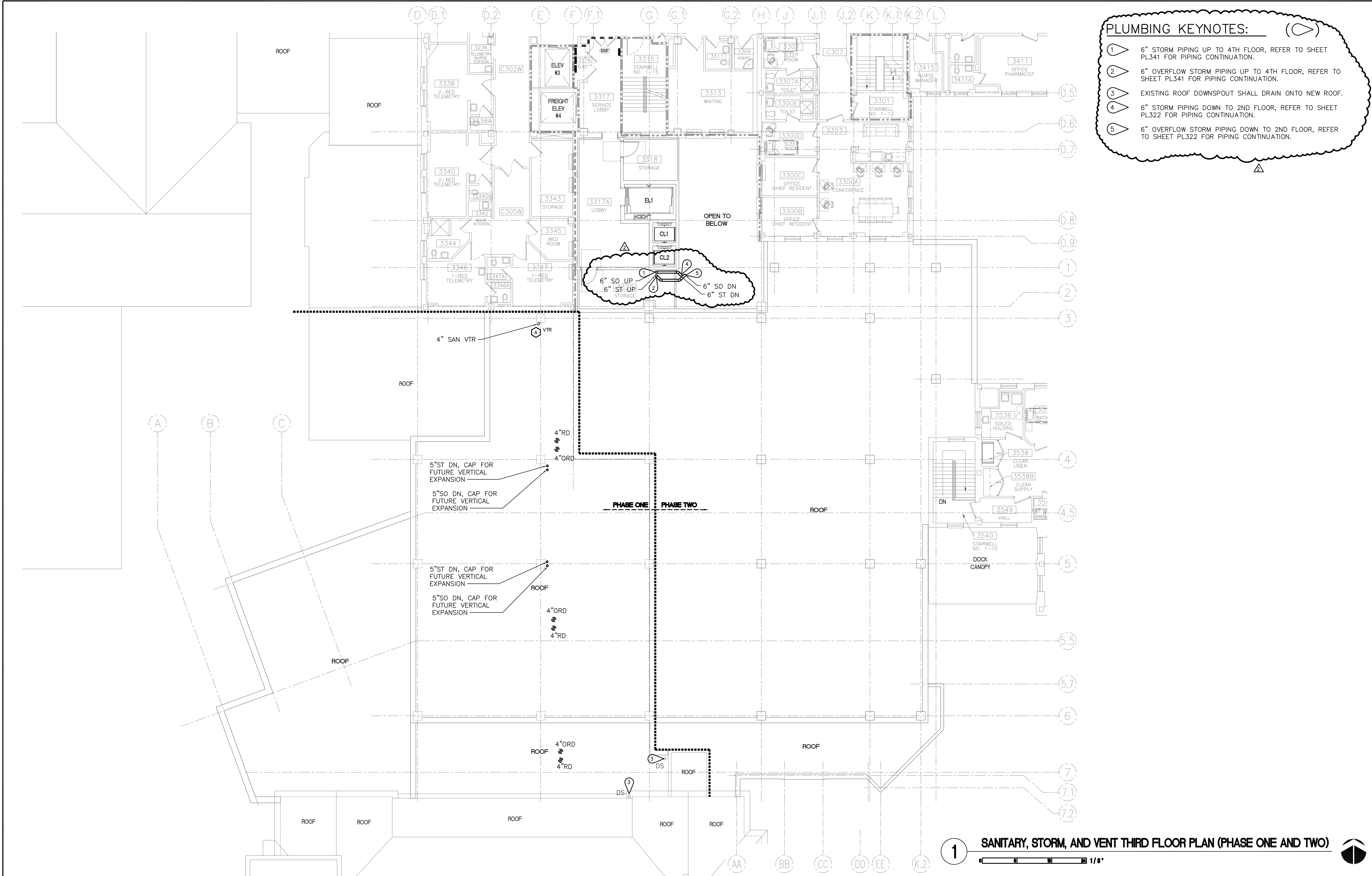


three inches = one foot
one and one half inches = one foot
one inch = one foot
three quarters inch = one foot
one half inch = one foot
three eighths inch = one foot
one quarter inch = one foot
one eighth inch = one foot

0 1 2 3 4 5 6 7 8 9 10 11 12 13 14 15 16

6:20:12 12401A (CAD) Plumbing_333_636-127_PL331.dwg 8-05-14 03:30:54 PM BJK



- PLUMBING KEYNOTES:**
- 1 6" STORM PIPING UP TO 4TH FLOOR, REFER TO SHEET PL341 FOR PIPING CONTINUATION.
 - 2 6" OVERFLOW STORM PIPING UP TO 4TH FLOOR, REFER TO SHEET PL341 FOR PIPING CONTINUATION.
 - 3 EXISTING ROOF DOWNSPOUT SHALL DRAIN ONTO NEW ROOF.
 - 4 6" STORM PIPING DOWN TO 2ND FLOOR, REFER TO SHEET PL322 FOR PIPING CONTINUATION.
 - 5 6" OVERFLOW STORM PIPING DOWN TO 2ND FLOOR, REFER TO SHEET PL322 FOR PIPING CONTINUATION.

1 SANITARY, STORM, AND VENT THIRD FLOOR PLAN (PHASE ONE AND TWO)

CONSULTANTS: FARRIS ENGINEERING OMAHA LINCOLN DES MOINES COLORADO SPRINGS farris-usa.com FE#124014		ARCHITECT/ENGINEERS: Kenneth Hahn Architects 1343 South 75th Street Omaha, NE 68124-1610 402.391.2111 www.kharch.com AE Project # 171-001		Drawing Title SANITARY, STORM, AND VENT THIRD FLOOR PLAN (PHASE ONE AND TWO) Approved Project Director	Project Title BUILD SUPPLY, PROCESSING AND DISTRIBUTION Location VAMC DES MOINES Date 13 FEBRUARY 2014 Checked JMM Drawn MDB	Project Number 636-121 Building Number BUILDING 1W Drawing Number PL331 Dwg. 145 of 235	Office of Construction and Facilities Management
Revisions #2 08-07-14 Date							