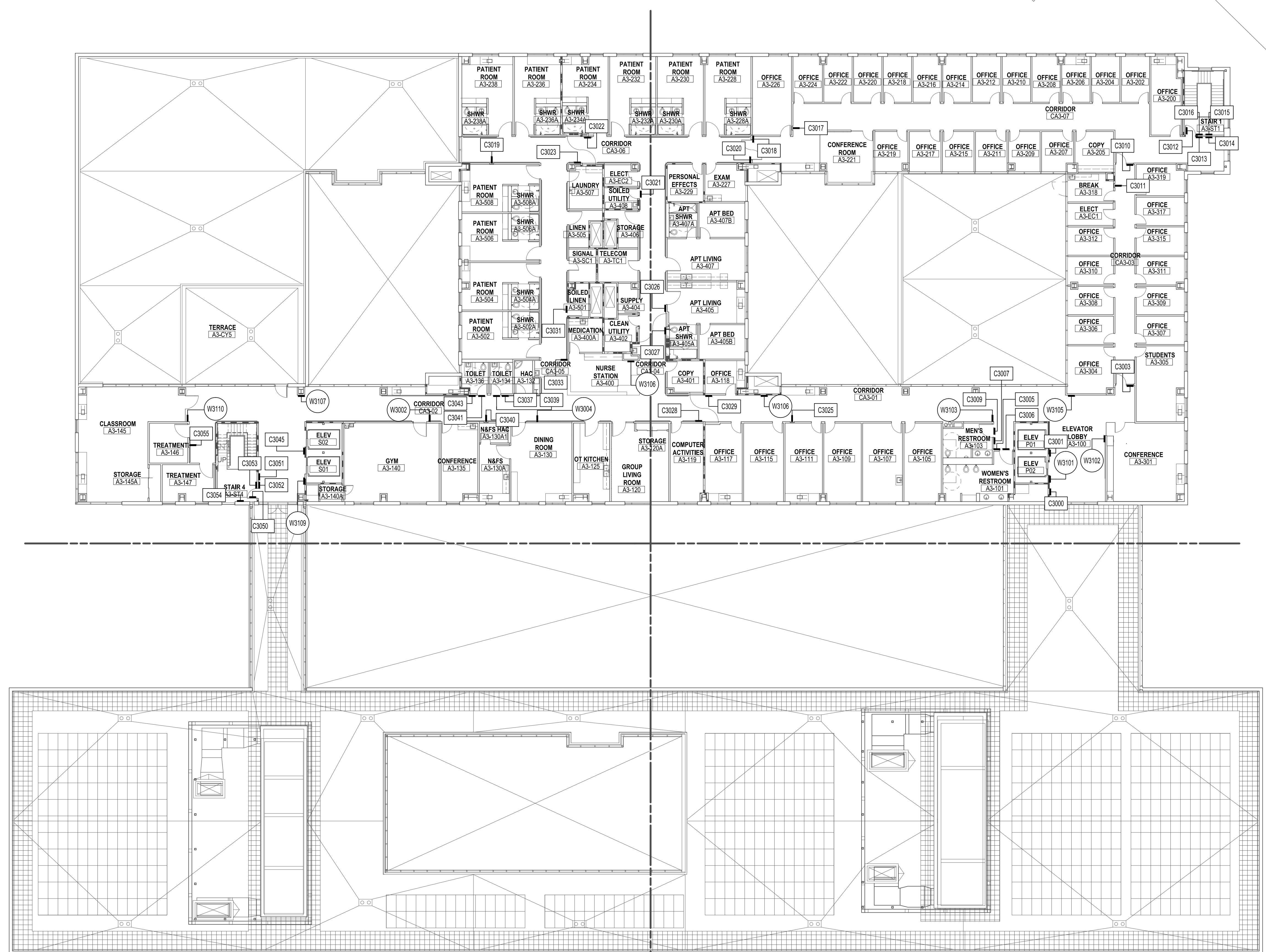


one eighth inch = one foot
one quarter inch = one foot
three eighths inch = one foot
one half inch = one foot
three quarters inch = one foot
one inch = one foot
one and one half inches = one foot
two inches = one foot
three inches = one foot
four inches = one foot
six inches = one foot
one foot = one foot

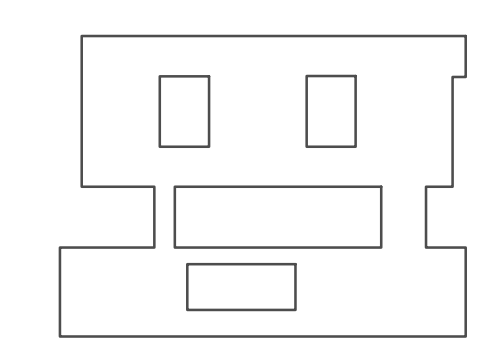


SHEET NOTES

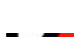
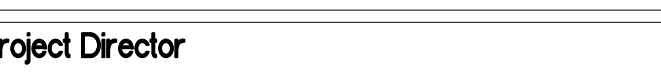
- 1. SEE SIGN SCHEDULE FOR SIGN TYPES, MESSAGES AND QUANTITIES.
- 2. SEE CONSTRUCTION DRAWINGS FOR SIGN DETAILS.

LEGEND

- C1234 CODE SIGN LOCATION
- W1234 WAYFINDING SIGN LOCATION



FULLY SPRINKLERED
CONSTRUCTION DOCUMENTS

		CONSULTANTS:		Seals and Signatures		ARCHITECT/ENGINEERS:		Drawing Title SIGN LOCATION PLAN LEVEL 3		Project Title CENTERS FOR AMBULATORY CARE, POLYTRAUMA AND BLIND REHABILITATION Polytrauma and Blind Rehabilitation Center		Project Number		Office of Construction and Facilities Management	
		 Kate Keating Associates, Inc. 1045 Sansome Street, Suite 202 San Francisco, CA 94111 415.773.1000 Fax 773.1008 city@kkaiinc.com						Approved Project Director		Location 3801 Miranda Ave., Palo Alto CA		Building Number			
										Drawing Number AG2.13					
100% Final Submittal								Date 3/19/2014		Dwg. of --					
Revisions										Date 30 APRIL, 2010		Checked		Drawn	

Department of
Veterans Affairs