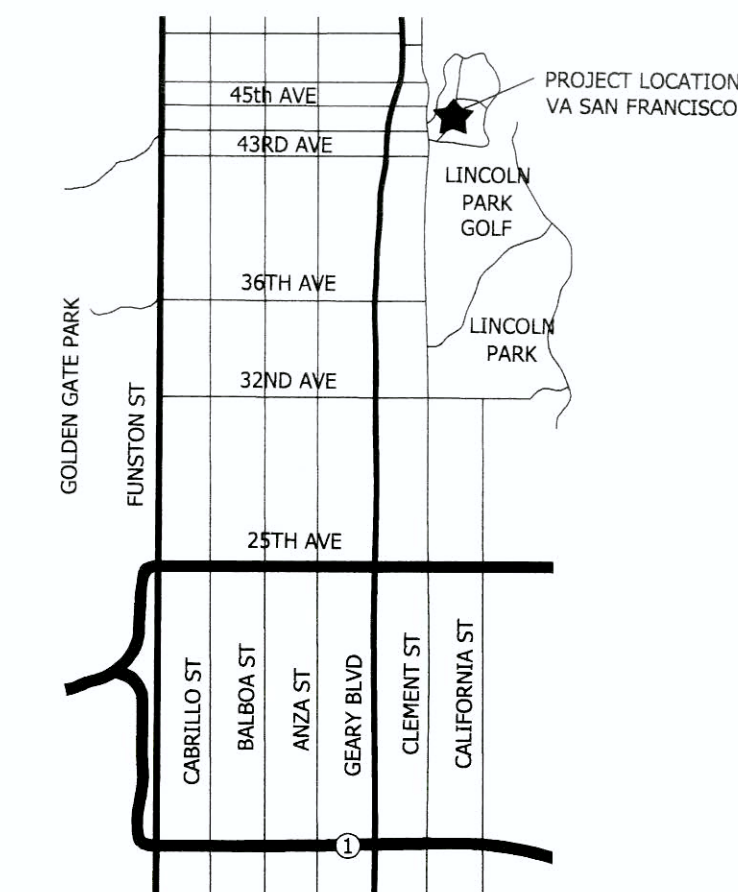
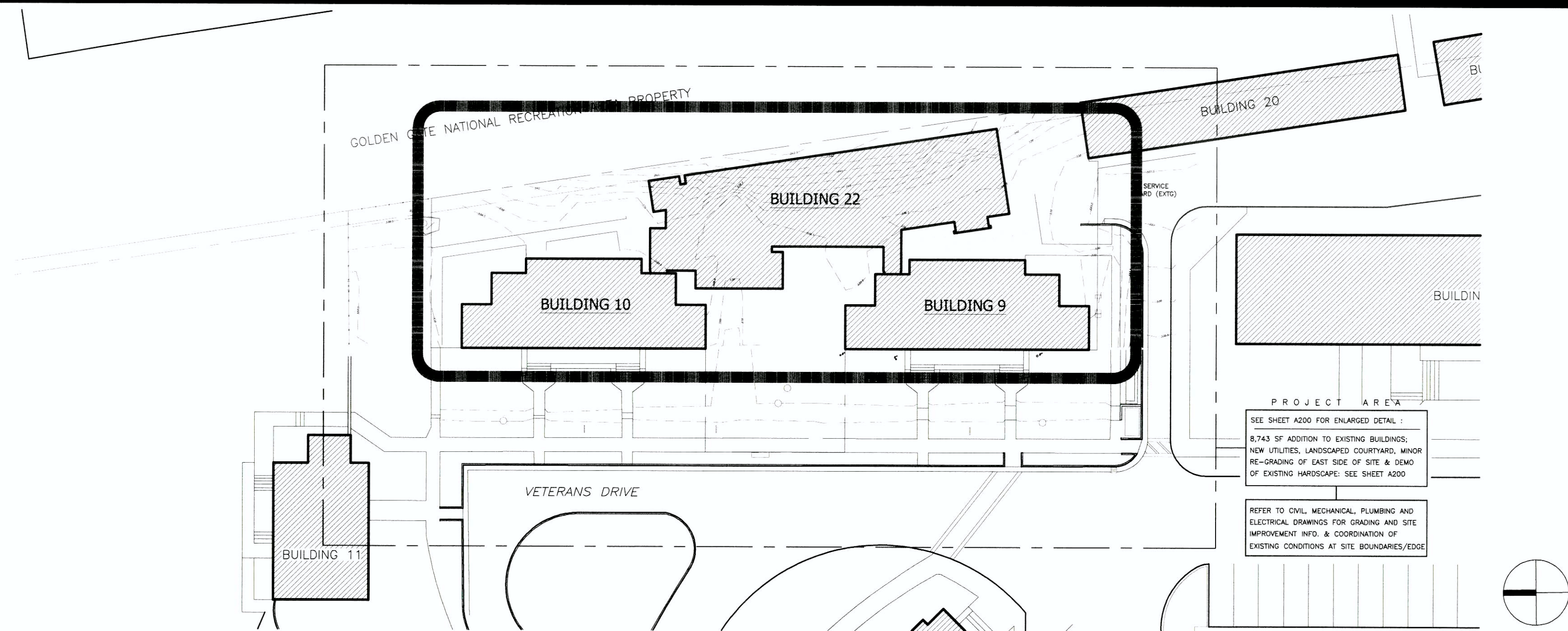


# UNITED STATES DEPARTMENT OF VETERANS AFFAIRS - SAN FRANCISCO

## SEISMIC REPLACEMENT AND RETROFIT

4150 CLEMENT STREET, SAN FRANCISCO, CALIFORNIA 94121

COMMISSION NUMBER: 2941-001-00



VICINITY MAP

### GENERAL SHEET INDEX

G000 COVER SHEET

### CIVIL SHEET INDEX

C001 GENERAL NOTES, SURVEY NOTES AND ABBREVIATIONS  
C100 EXISTING SITE PLAN  
C110 DEMOLITION PLAN  
C200 SITE IMPROVEMENT PLAN  
C210 UTILITY PLAN  
C220 GRADING PLAN  
C301 CONSTRUCTION DETAILS  
C302 CONSTRUCTION DETAILS  
C320 EROSION & SEDIMENTATION CONTROL PLAN

### ARCHITECTURAL

A010 PROJECT INFORMATION  
A011 MATERIAL IDENTIFICATION CODES  
A020 GROUND FLOOR LIFE SAFETY PLAN  
A021 SECOND FLOOR LIFE SAFETY PLAN  
A080 OPENING SCHEDULE  
A090 ROOM FINISH SCHEDULE  
A100 BASEMENT FLR., GROUND FLR & SECOND FLR. DEMOLITION PLANS  
A200-B BASEMENT FLOOR PLAN  
A200 GROUND FLOOR PLAN  
A201 SECOND FLOOR PLAN  
A202 ROOF PLAN  
A300 GROUND FLOOR REFLECTED CEILING PLAN  
A301 SECOND FLOOR REFLECTED CEILING PLAN  
A400 BUILDING ELEVATIONS  
A401 BUILDING SECTIONS  
A420 WALL SECTIONS AND EXTERIOR WALL TYPES

A460 EXTERIOR DETAILS  
A461 EXTERIOR DETAILS  
A480 ROOF TYPES AND DETAILS  
A490 EXTERIOR WINDOW AND ALUMINUM DOOR TYPES  
A491 EXTERIOR DETAILS: DOORS AND WINDOWS  
A560 EXTERIOR STAIRS AND RAMP ELEVATIONS AND ENLARGED PLANS  
A561 EXTERIOR STAIR AND RAMP DETAILS  
A562 MISC. STEEL WORK AND DETAILS  
A600 TYPICAL TOILET ROOM INFO., MOUNTING HEIGHTS AND SIGNAGE  
A601 INTERIOR ELEVATIONS AND ENLARGED PLANS  
A660 INTERIOR PARTITION TYPES, NOTES AND DETAILS  
A661 INTERIOR DETAILS  
A662 INTERIOR DETAILS  
A670 CEILING DETAILS  
A680 CASEWORK DETAILS

### INTERIORS

I200 GROUND FLOOR FINISH AND SIGNAGE PLAN  
I201 SECOND FLOOR FINISH PLAN

### STRUCTURAL

#### BUILDINGS 9 & 10

S-001 GENERAL NOTES SYMBOLS AND ABBREVIATIONS  
SB-101 FOUNDATION & BASEMENT PLAN  
SB-101A FOUNDATION & BASEMENT PLAN  
SB-101B FOUNDATION & BASEMENT PLAN  
SF-101 FIRST FLOOR FRAMING PLAN  
SF-101A FIRST FLOOR FRAMING PLAN  
SF-101B FIRST FLOOR FRAMING PLAN  
SF-102 SECOND FLOOR FRAMING PLAN  
SF-102A SECOND FLOOR FRAMING PLAN  
SF-102B SECOND FLOOR FRAMING PLAN  
SF-103 ROOF FRAMING PLAN  
SF-103A ROOF FRAMING PLAN  
SF-103B ROOF FRAMING PLAN  
S-501 DETAILS

#### BUILDING 22

S001 GENERAL NOTES  
S002 ABBREVIATIONS & SYMBOLS  
SB-100 FOUNDATION - KEY PLAN  
SB-100A FOUNDATION PLAN  
SF-101 GROUND FLOOR - KEY PLAN  
SF-101A GROUND FLOOR - FRAMING PLAN  
SF-102 SECOND FLOOR - KEY PLAN  
SF-102A SECOND FLOOR - FRAMING PLAN  
SF-103 ROOF PLAN - KEY PLAN  
SF-103A ROOF PLAN - FRAMING PLAN  
S201 ELEVATIONS  
S202 ELEVATIONS  
S311 PARTIAL PLANS  
S501 TYPICAL CONCRETE DETAILS  
S502 CONCRETE DETAILS  
S511 TYPICAL LIGHT GAGE STEEL DETAILS  
S512 TYPICAL LIGHT GAGE STEEL DETAILS  
S513 TYPICAL LIGHT GAGE STEEL DETAILS  
S514 TYPICAL LIGHT GAGE STEEL DETAILS  
S521 TYPICAL STEEL DETAILS  
S522 STEEL DETAILS  
S531 TYPICAL METAL DECK DETAILS  
S541 TYPICAL WOOD DETAILS

### MECHANICAL

M001 HVAC - LEGENDS, ABBREVIATIONS, GENERAL NOTES & SCHEDULES  
M101 BLDG 9 & 10 - BASEMENT FLOOR HVAC PLANS - EXISTING  
M102 BLDG 9 & 10 - FIRST FLOOR HVAC PLANS - EXISTING  
M200 BLDG 22 - GROUND FLOOR HVAC PLAN  
M201 BLDG 22 - SECOND FLOOR HVAC PLAN  
M202 BLDG 22 - ROOF HVAC PLAN  
M301 BLDG 22 - HVAC - DETAILS  
M302 BLDG 22 - HVAC - CONTROLS AND DETAILS

### PLUMBING

P001 PLUMBING - LEGENDS, ABBREVIATIONS, GENERAL NOTES & SCHEDULE  
P101 BLDG 9 & 10 - BASEMENT FLOOR PLUMBING PLANS - EXISTING  
P102 BLDG 9 & 10 - FIRST FLOOR PLUMBING PLANS - EXISTING  
P200 BLDG 22 - GROUND FLOOR PLUMBING PLAN  
P201 BLDG 22 - SECOND FLOOR PLUMBING PLAN  
P202 BLDG 22 - ROOF PLUMBING PLAN  
P301 BLDG 22 - PLUMBING DETAILS  
P302 BLDG 22 - PLUMBING DETAILS

### ELECTRICAL

**BUILDINGS 9 & 10**  
E000 ELECTRICAL - LEGENDS, ABBREVIATIONS AND DRAWING INDEX  
E101 ELECTRICAL - BUILDING 9 AND 10 BASEMENT FLOOR PLANS  
E102 ELECTRICAL - BUILDING 9 AND 10 FIRST FLOOR PLANS  
**BUILDING 22**  
E001 ELECTRICAL - LEGENDS, ABBREVIATIONS, LIGHT FIXTURE SCHEDULE AND DRAWING INDEX  
E100 ELECTRICAL - SITE PLAN  
E200 ELECTRICAL - BUILDING 22 GROUND FLOOR PLAN, FIRE ALARM  
E201 ELECTRICAL - BUILDING 22 SECOND FLOOR PLAN, FIRE ALARM  
E202 ELECTRICAL - BUILDING 22 FIRE ALARM RISER DIAGRAM  
E300 ELECTRICAL - BUILDING 22 GROUND FLOOR PLAN, LIGHTING  
E301 ELECTRICAL - BUILDING 22 SECOND FLOOR PLAN, LIGHTING  
E400 ELECTRICAL - BUILDING 22 GROUND FLOOR PLAN, POWER AND COMMUNICATIONS  
E401 ELECTRICAL - BUILDING 22 SECOND FLOOR PLAN, POWER AND COMMUNICATIONS  
E501 ELECTRICAL - NEW POWER ONE LINE DIAGRAM  
E502 ELECTRICAL - CABLE TV AND TELE-DATA RISER DIAGRAMS

## CONSTRUCTION DOCUMENTS

### CONSTRUCTION PACKAGE HISTORY

| SUBMITTAL | PACKAGE DESCRIPTION         | ISSUE DATE       |
|-----------|-----------------------------|------------------|
| 1         | 95% CONSTRUCTION DOCUMENTS  | AUGUST 08, 2008  |
| 2         | 100% CONSTRUCTION DOCUMENTS | AUGUST 10, 2008  |
| 3         | REVISED 100% CD's           | MARCH 30, 2011   |
| 4         | BCOE REVIEW                 | APRIL 11, 2012   |
| 5         | CONSTRUCTION DOCUMENTS      | OCTOBER 22, 2012 |

### PROJECT TEAM

#### OWNER

U.S.D.V.A. - SAN FRANCISCO

4150 CLEMENT STREET  
SAN FRANCISCO, CALIFORNIA 94121  
TEL: (415) 221-4810  
FAX: (415) 750-6955

#### ARCHITECT

HGA

SAN FRANCISCO OFFICE  
170 Maiden Lane, 5th Floor  
San Francisco, CA 94108-5333  
TEL: (415) 814-6910  
FAX: (415) 962-2598

#### STRUCTURAL

DEGENKOLB ENGINEERS.

235 MONTGOMERY STREET, SUITE 500  
SAN FRANCISCO, CALIFORNIA 94104  
TEL: (415) 392-6952  
FAX: (415) 544-0782

#### MEP

HTC ENGINEERS, INC

1529 CYPRESS STREET #103  
WALNUT CREEK, CALIFORNIA 94596  
TEL: (925) 937-4147  
FAX: (925) 937-6931

#### ACCESS COMPLIANCE GUIDELINES

- ALL WORK SHALL CONFORM TO TITLE 24, CALIFORNIA CODE OF REGULATIONS (CCR.)
- CHANGES FROM THE APPROVED DRAWINGS AND SPECIFICATIONS SHALL BE MADE BY AN ADDENDA OR CHANGE ORDER APPROVED BY THE CLIENT.
- GRADING PLANS, DRAINAGE IMPROVEMENTS, ROAD AND ACCESS REQUIREMENTS AND ENVIRONMENTAL HEALTH CONSIDERATIONS SHALL COMPLY WITH ALL LOCAL ORDINANCES WHEN NOT SUPERCEDED OR EXEMPT BY FEDERAL REGULATIONS AS APPLICABLE TO THIS PROJECT.

#### DEFERRED APPROVAL

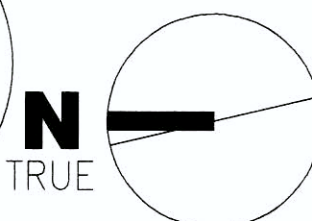
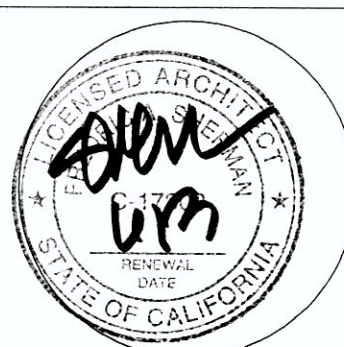
- OVERHEAD SPRINKLER SYSTEM:  
PROVIDE COMPLETE FIRE PROTECTION PLANS, HYDRAULIC CALCULATIONS, DATA SUBMITTAL PACKAGE AND CURRENT WATER FLOW TEST INFORMATION (SHALL BE ON LOCAL FIRE AUTHORITY LETTER HEAD). IT IS THE CONTRACTOR'S RESPONSIBILITY TO COORDINATE FIRE PROTECTION PLANS WITH OTHER TRADES. ABOVE ITEMS SHALL BE SUBMITTED TO V.A. FOR REVIEW AND APPROVAL PRIOR TO CONSTRUCTION.
- CURTAINWALL DESIGN AND DETAILS:  
SUBMIT TO V.A. FOR REVIEW CURTAINWALL DESIGN AND DETAILS FOR ALL FRAMES GREATER THAN 10 FEET HIGH.
- STAIR DESIGN AND DETAILS:  
SUBMIT TO V.A. FOR REVIEW AND APPROVAL ALL METAL STAIR DESIGN AND DETAILS PRIOR TO CONSTRUCTION.

### CONSULTANTS:

STRUCTURAL: DEGENKOLB ENGINEERS; 235 MONTGOMERY STREET., SUITE 500; SAN FRANCISCO, CA 94104  
MECHANICAL: HTC ENGINEERS; 1529 CYPRESS ST., SUITE 103; WALNUT CREEK, CA 94596  
ELECTRICAL: BAY AREA CONSULTING ENGINEERS; 311 CALIFORNIA STREET, SUITE 720; SAN FRANCISCO, CA 94104  
CIVIL ENGINEER: GHD CIVIL ENGINEERS; 2235 MERCURY WAY, SUITE 150; SANTA ROSA, CA 95407  
ESTIMATING: CUMMING CORPORATION; 1970 BROADWAY, SUITE 630; OAKLAND, CA 94612  
SURVEYORS: MARTIN M. RON ASSOCIATES, INC.; 859 HARRISON ST., SUITE 200; SAN FRANCISCO, CA 94107  
UTILITY LOCATORS: CRUZ BROTHERS LOCATORS; P.O. BOX 66768; SCOTTS VALLEY, CA 95067

### ARCHITECT/ENGINEERS:

HGA  
Architecture | Engineering | Planning  
Hammel, Green and Abrahamson, Inc.  
170 Maiden Lane - Fifth Floor  
San Francisco, California USA 94108  
Telephone 415.814.6910  
Facsimile 415.962.2598



Drawing Title

**COVER SHEET**

Scale: **AS NOTED**

Approved: Project Director

Project Title

**VA Medical Center  
Seismic Replacement And  
Retrofit**

Location

**San Francisco, CA**

Date

**10 / 22 / 2012**

Checked

**.**

Drawn

**HGA**

Project Number

**2941-001-00**

Building Number

**9, 10 & 22**

Drawing Number

**G000**

**Office of  
Facilities  
Management**

**Department of  
Veterans Affairs**