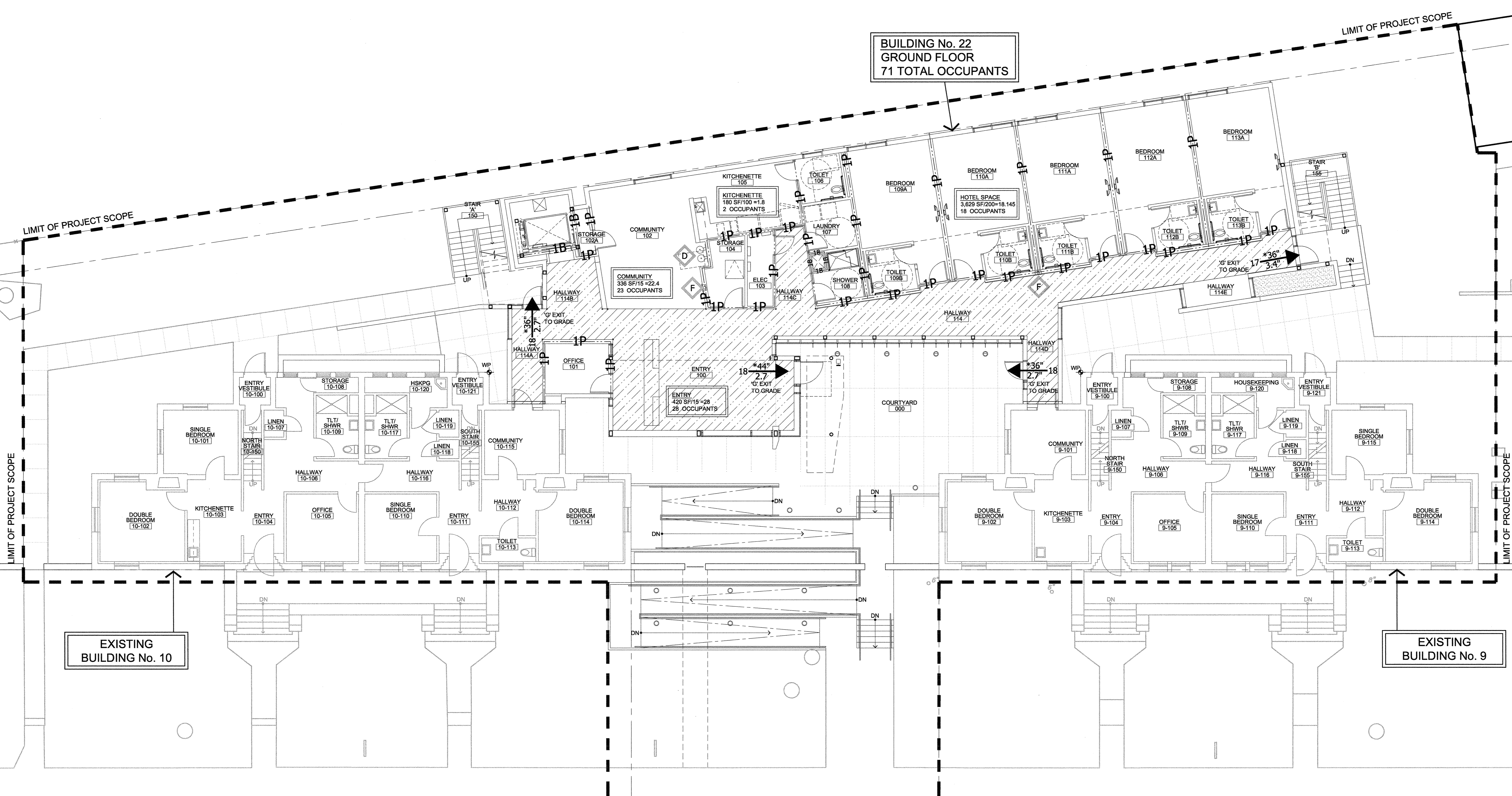


one inch = one foot
three quarters inch = one foot
one half inch = one foot
three eighths inch = one foot
one quarter inch = one foot
one eighth inch = one foot
one sixteenth inch = one foot
one thirty second inch = one foot
three inches = one foot
one and one half inches = one foot



BUILDING No. 22
GROUND FLOOR
71 TOTAL OCCUPANTS

EXISTING
BUILDING No. 10

EXISTING
BUILDING No. 9

LIFE SAFETY PLAN SYMBOLS (SYMBOLS ONLY - SEE PLANS FOR ACTUAL INFO)

I-2 1B NHCO/EHCO I (443)	BUILDING CODE OCCUPANCY TYPE BUILDING CODE CONSTRUCTION TYPE LIFE SAFETY CODE OCCUPANCY TYPE LIFE SAFETY CODE CONSTRUCTION TYPE
	NOMINAL EXIT DOOR OR FRAME WIDTH # OF OCCUPANTS MINIMUM REQUIRED WIDTH FOR EXIT TO GRADE # OF OCCUPANTS
	MINIMUM FIRE DOOR / FRAME ASSEMBLY RATING (MINUTES) HOSPITAL SUITE - SQUARE FOOTAGE (10,000 SF MAX AT TREATMENT) (5,000 SF MAX AT SLEEPING AREAS)
	FIRE/SMOKE RESISTIVE PARTITION
	NEW AND EXISTING CONSTRUCTION
	FIRE EXTINGUISHER (MAXIMUM TRAVEL 75'-0")
	DRINKING FOUNTAIN
	NEW EXIT PATH/EGRESS CORRIDOR
	NEW VERTICAL/ HORIZ EXIT ENCLOSURE
	COMMON PATH OF TRAVEL OR EXIT ACCESS TRAVEL DISTANCE (# FT)

ASSEMBLY RATING

REQUIRED ASSEMBLY RATING	MINIMUM OPENING PROTECTION ASSEMBLY
X 0 HOUR RATED	NO RATING
1 ONE HOUR RATED	20/45/60 MIN.
2 TWO HOUR RATED	1 1/2 HOUR
3 THREE HOUR RATED	3 HOUR
4 FOUR HOUR RATED	3 HOUR

TYPE OF ASSEMBLY

B FIRE BARRIERS	P FIRE PARTITIONS
E EXISTING	RF RADIO FREQUENCY SHIELDING
L LEAD LINED	S SMOKE BARRIER/COMPARTMENT (22,500 SQ. FT. MAX)
M MAGNETIC SHIELDING	W FIRE WALL
O OCCUPANCY	X SMOKE PARTITIONS
SC SMOKE CURTAIN	H HORIZONTAL EXIT

LIFE SAFETY PLAN KEYNOTES

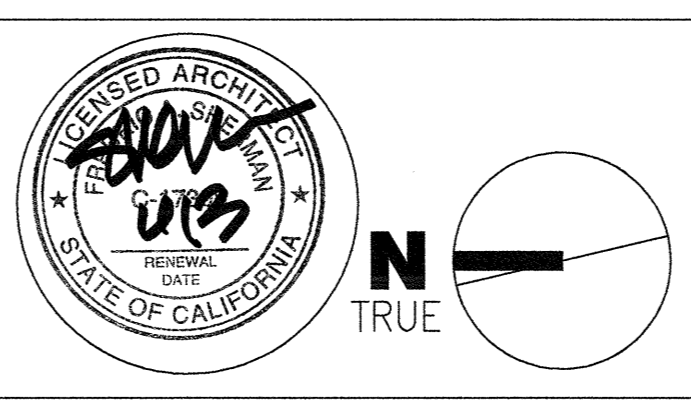
1. *REQUIRED OPENING WIDTH IS NOMINAL WIDTH MINUS 3" FOR SINGLE LEAF DOOR AND 5" FOR SINGLE EGRESS PAIR OF DOORS.
2. RESISTS SMOKE PASSAGE. NO RATING REQUIRED ON WALLS, DOOR OR FRAME.
3. 20 MINUTES FOR FIRE PARTITION, CORRIDOR WALLS, AND SMOKE BARRIERS/ 45 MINUTES FOR OTHER FIRE BARRIERS (HAZARDOUS AREAS)/ 60 MINUTES FOR SHAFT, EXIT ENCLOSURE AND EXIT PASSAGEWAY WALLS.
4. 1 HOUR FIRE-RESISTANCE RATING, 20 MIN. DOOR FRAME.

CONSULTANTS:

STRUCTURAL: DEGENKOLB ENGINEERS; 235 MONGOMERY STREET, SUITE 500; SAN FRANCISCO, CA 94104
MECHANICAL: HTC ENGINEERS; 1529 CYPRESS ST., SUITE 103; WALNUT CREEK, CA 94596
ELECTRICAL: BAY AREA CONSULTING ENGINEERS; 311 CALIFORNIA STREET, SUITE 720; SAN FRANCISCO, CA 94104
CIVIL ENGINEER: GHD CIVIL ENGINEERS; 2235 MERCURY WAY, SUITE 150; SANTA ROSA, CA 95407
ESTIMATING: CUMMING CORPORATION; 1970 BROADWAY, SUITE 630; OAKLAND, CA 94612
SURVEYORS: MARTIN M. RON ASSOCIATES, INC.; 859 HARRISON ST., SUITE 200; SAN FRANCISCO, CA 94107
UTILITY LOCATORS: CRUZ BROTHERS LOCATORS; P.O. BOX 66768; SCOTT'S VALLEY, CA 95067

ARCHITECT/ENGINEERS:

Architecture | Engineering | Planning
Hammel, Green and Abrahamson, Inc.
170 Maiden Lane - Fifth Floor
San Francisco, California USA 94108
Telephone 415.814.6910
Facsimile 415.962.2598



Drawing Title
**GROUND FLOOR
LIFE SAFETY PLAN**
Scale: 1/8" = 1'-0"

Approved: Project Director

Project Title
**VA Medical Center
Seismic Replacement And
Retrofit**
Location
San Francisco, CA

Date
1/22/2013
Checked
HGA
Drawing Number
A020

Project Number
2941-001-00
Building Number
9, 10 & 22
Office of
**Facilities
Management**
Department of
Veterans Affairs

Revisions: Date