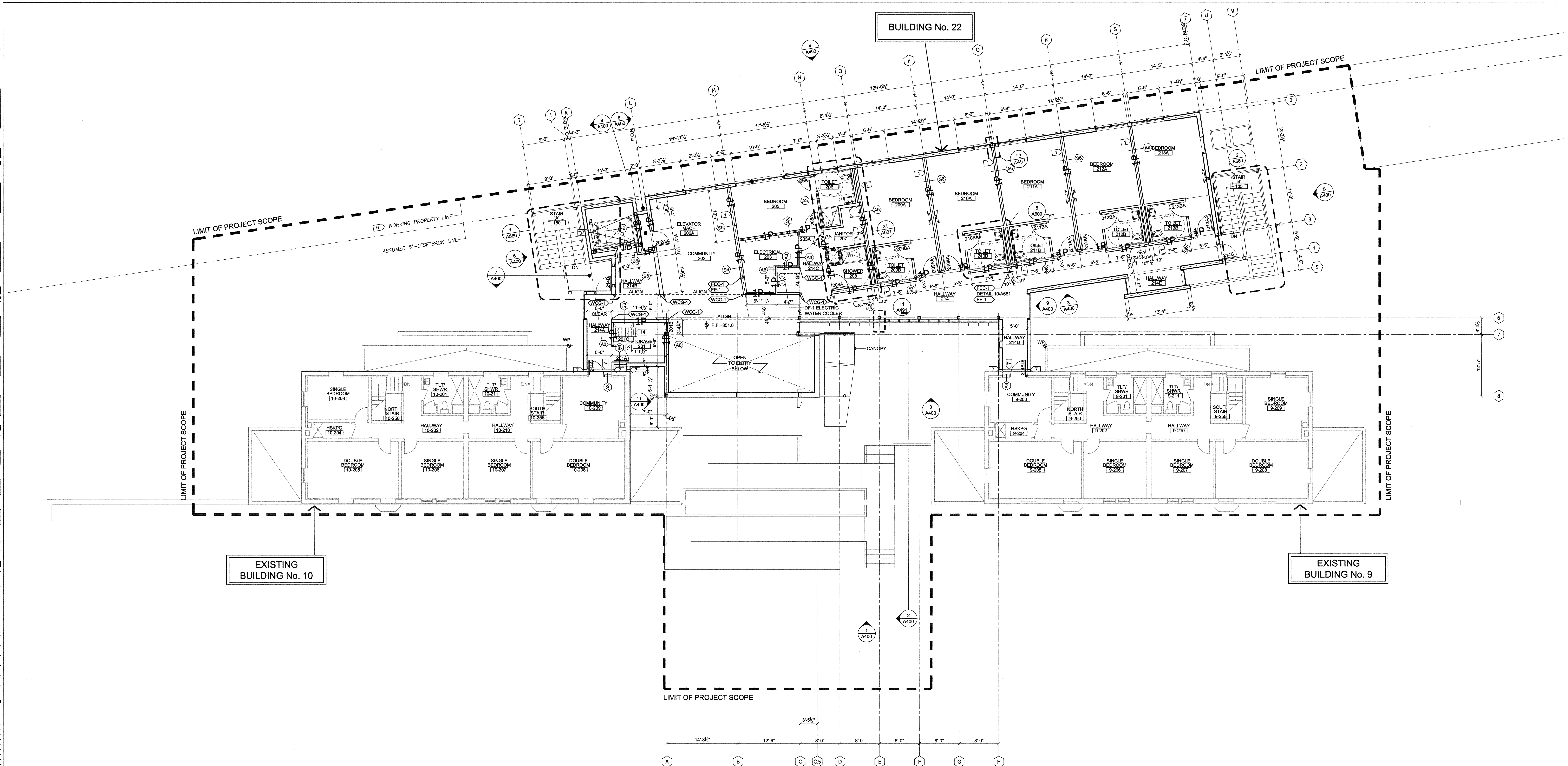


one and one half inches = one foot
three eighths inch = one foot
one eighth inch = one foot
one quarter inch = one foot
three eighths inch = one foot
one half inch = one foot
three quarters inch = one foot
one inch = one foot



FLOOR PLAN GENERAL NOTES

- A. ALL INTERIOR PARTITIONS SHALL BE "A" UNO. SEE DETAIL 1/A680 FOR BEARING AND SHEAR WALLS. SEE STRUCTURAL DRAWINGS FOR DETAILS AND INFORMATION.
- B. REFER TO SHEET A080 FOR DETAIL OF TYP. DOOR JAMB AT ABUTTING WALLS OR PARTITIONS.
- C. ALL OFFICES AND TOILET ROOMS TO HAVE A SINGLE COAT HOOK "CH-1" MOUNTED ON THE DOOR (ROOM SIDE) @ 48" & 60" AFF. UNO.
- D. ALL PIPING, CONDUITS AND RELATED MECHANICAL AND ELECTRICAL ITEMS SHALL BE CONCEALED WITHIN DRYWALL FURRING AS REQUIRED IN FINISHED AREAS WHETHER SHOWN ON DRAWINGS OR NOT, UNO.
- E. PROVIDE METAL PLATE BACKING AND/OR TREATED WOOD BLOCKING IN WALLS WHERE WALL-MOUNTED EQUIPMENT IS SHOWN ON PLANS OR ELEVATIONS. VERIFY HEIGHT AND LENGTH WITH ACTUAL EQUIPMENT. SEE DETAIL 3/A661.
- F. SEE STRUCTURAL DWGS. FOR CONCRETE CURB LOCATIONS, WHERE OCCURS.
- G. FINISHED FLOOR ELEVATIONS, UNO. (SEE CIVIL PLANS FOR CORRESPONDING SITE ELEVATION).
- H. ALL GRIDLINE DIMENSIONS ARE TO CENTERLINE OF GRIDLINE TO CENTERLINE OF GRIDLINE.
- J. SEE DETAIL 3/A080 FOR FLOOR TRANSITION REQUIREMENTS AT ADJACENT ROOMS WITH DIFFERENT FLOOR FINISH, TYP.
- K. RB-1 RESILIENT BASE TO OCCUR ON ALL NEW INTERIOR WALLS EXCEPT FOR RESTROOM INTERIORS.
- L. SEE DETAIL 16/A661 FOR FINISH FLOOR PLAN AT MAIN RESTROOMS.
- M. ALL EXISTING UTILITIES SHALL BE LOCATED AND/OR LOCATIONS VERIFIED IN FIELD.
- N. UTILITIES HOOK-UPS, INCLUDING NECESSARY DRAWING OR SPECIFICATION-RELATED WORK, BEYOND 5'-0" FROM F.O. BUILDING SHALL BE THE RESPONSIBILITY OF THE OWNER.
- O. SEE SHEET A480 FOR EXTERIOR WINDOW AND WALL TYPES.
- P. EXTERIOR WALLS TO BE COORDINATED WITH STRUCTURAL DRAWINGS FOR ADDITIONAL REQUIREMENTS.

FLOOR PLAN KEYNOTES <#>

- 1. NEW SHEAR WALL OR BEARING WALL TO BE BUILT CENTERED ON STRUCTURAL GRID LINE.
- 2. NEW ACCESSIBLE RAMP. SEE ENLARGED FLOOR PLAN 9/A060 FOR FURTHER INFORMATION.
- 3. REPAIR EXISTING WALL WHERE GATE HAS BEEN REMOVED. PATCH TO MATCH EXISTING WALL AS REQUIRED. PAINT WALL/OPENING TO MATCH EXISTING. SEE DETAIL 7/A661.
- 4. AUTOMATIC DOOR ACTUATOR. SEE DOOR HARDWARE SPECIFICATIONS FOR FURTHER INFORMATION.
- 5. AUTOMATIC DOOR ACTUATOR AND CARD READER. PROVIDE BOLLARD FOR AUTOMATIC OPERATOR ACTUATOR AND CARD READER AS SPECIFIED IN SECTION 087113.
- 6. EXISTING FENCE LINE IS ASSUMED TO BE FORMAL PROPERTY BOUNDARY UNO. (N) F.O. BUILDING 5'-4" FROM THIS LINE. AWAITING FORMAL BOUNDARY SURVEY.
- 7. EXPANSION JOINT. SEE SHEET A461 FOR DETAILS. REFER TO STRUCTURAL DRAWINGS FOR FURTHER INFORMATION.
- 8. INSTALL NEW WINDOW TO MATCH EXISTING ADJACENT HISTORIC WINDOW OPENING AND FENESTRATION. PATCH EXTERIOR WALL TO MATCH EXISTING CONSTRUCTION AND FINISH. FIELD VERIFY EXISTING CONDITIONS.
- 9. 4'-0" x 8'-0" MECHANICAL EQUIPMENT CONCRETE PAD - SEE M.E.P. DWGS. FOR FURTHER INFORMATION.
- 10. PRIMARY UTILITIES CONNECTION POINT. SEE M.E.P. AND CIVIL DRAWINGS FOR FURTHER INFORMATION.
- 11. WASHLIGHT - WALL-MOUNTED - SEE SHEET A300 FOR LIGHT FIXTURE KEYNOTE I.
- 12. WASHLIGHT - FLOOR-MOUNTED - SEE SHEET A300 FOR LIGHT FIXTURE KEYNOTE I.
- 13. OUTLINE OF "RH-1" ROOF HATCH ABOVE. SEE DETAIL 12/A480.
- 14. "MET FAB-1" SHIPS LADDER TO ROOF ACCESS HATCH. SEE DETAIL 3 & 4/A462.
- 15. "ADF-1" 3'-0"x3'-0" FLOOR ACCESS DOOR. SEE STRUCTURAL DRAWINGS FOR FRAMING INFORMATION.
- 16. 24"x24"x24" SLUMP PIT AT BOTTOM OF ELEVATOR PIT. SEE DETAIL 5/A420 OR FURTHER INFORMATION.
- 17. SEE DETAIL 5/A462, TYPICAL AT ELEVATOR SHAFT.
- 18. NEW CRAWL SPACE VENT. SEE DETAIL 16/A461, EXTERIOR ELEVATIONS AND STRUCTURAL DRAWINGS FOR FURTHER INFORMATION.

CONSULTANTS: STRUCTURAL: DEGENKOLB ENGINEERS; 235 MONTGOMERY STREET, SUITE 500; SAN FRANCISCO, CA 94104 MECHANICAL: HTC ENGINEERS; 1529 CYPRESS ST., SUITE 103; WALNUT CREEK, CA 94596 ELECTRICAL: BAY AREA CONSULTING ENGINEERS; 311 CALIFORNIA STREET, SUITE 720; SAN FRANCISCO, CA 94104 CIVIL ENGINEER: GHD CIVIL ENGINEERS; 2235 MERCURY WAY, SUITE 150; SANTA ROSA, CA 95407 ESTIMATING: CUMMING CORPORATION; 1970 BROADWAY, SUITE 630; OAKLAND, CA 94612 SURVEYORS: MARTIN M. RON ASSOCIATES, INC.; 859 HARRISON ST., SUITE 200; SAN FRANCISCO, CA 94107 UTILITY LOCATORS: CRUZ BROTHERS LOCATORS; P.O. BOX 66768; SCOTTS VALLEY, CA 95067		ARCHITECT/ENGINEERS: HGA Architecture Engineering Planning Hammel, Green and Abrahamson, Inc. 170 Maiden Lane - Fifth Floor San Francisco, California USA 94108 Telephone 415.814.6910 Facsimile 415.962.2598		Drawing Title SECOND FLOOR PLAN Scale: 1/8" = 1'-0" Approved: Project Director		Project Title VA Medical Center Seismic Replacement And Retrofit Location San Francisco, CA Date 1/22/2013 Checked HGA Drawn HGA		Project Number 2941-001-00 Building Number 9, 10 & 22 Drawing Number A201		Office of Facilities Management Department of Veterans Affairs	
---	--	---	--	--	--	---	--	---	--	---	--