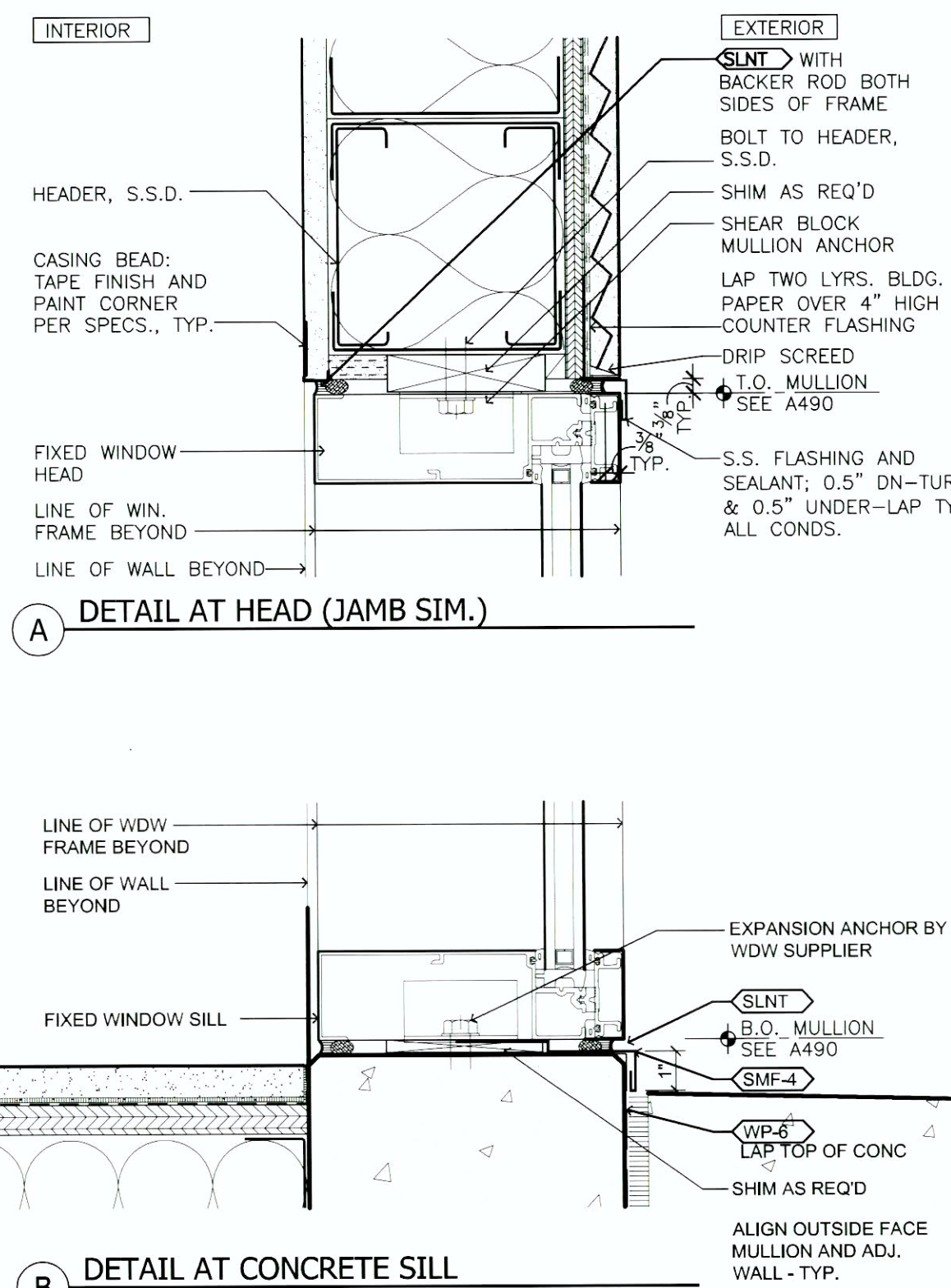
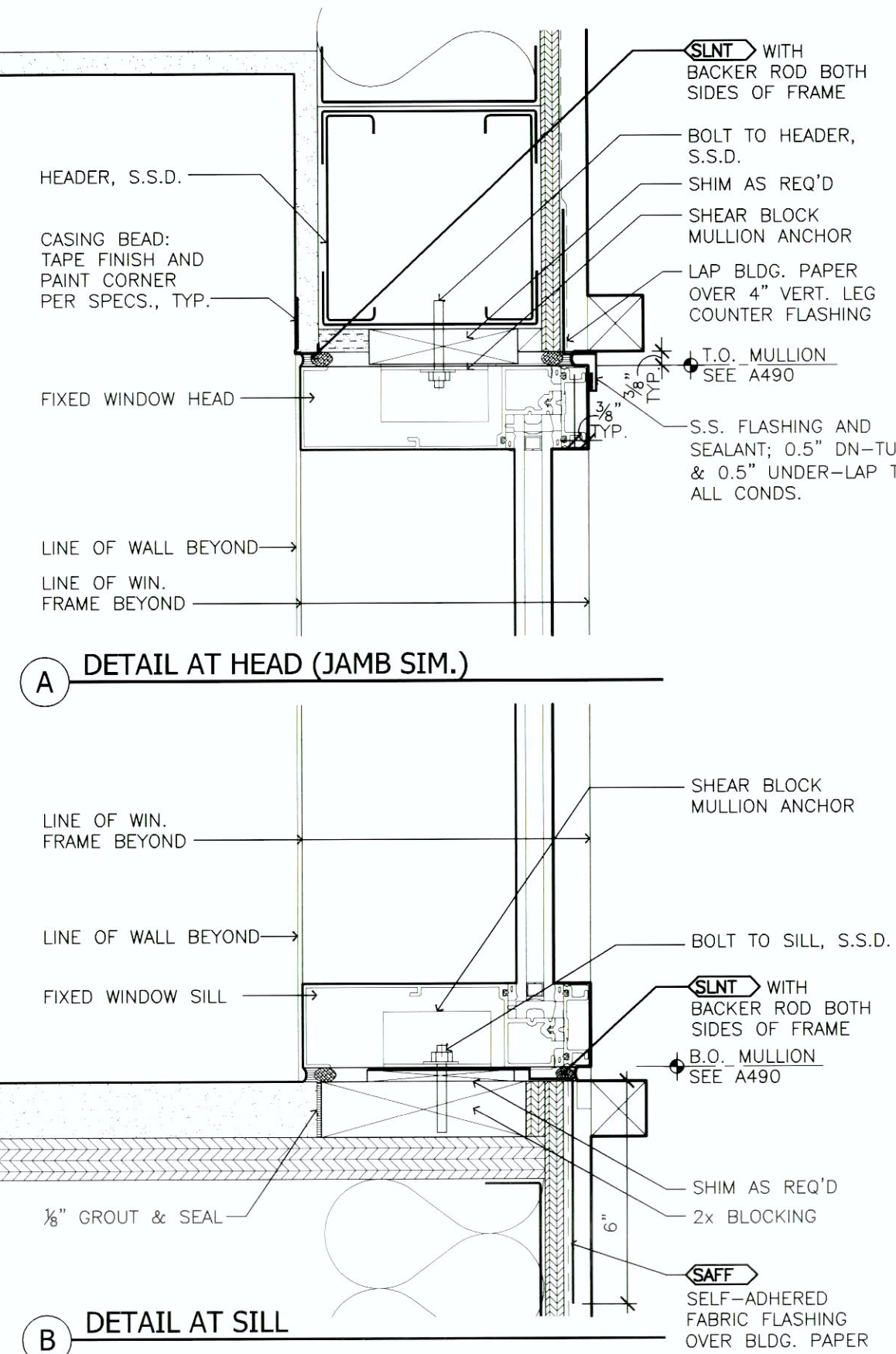


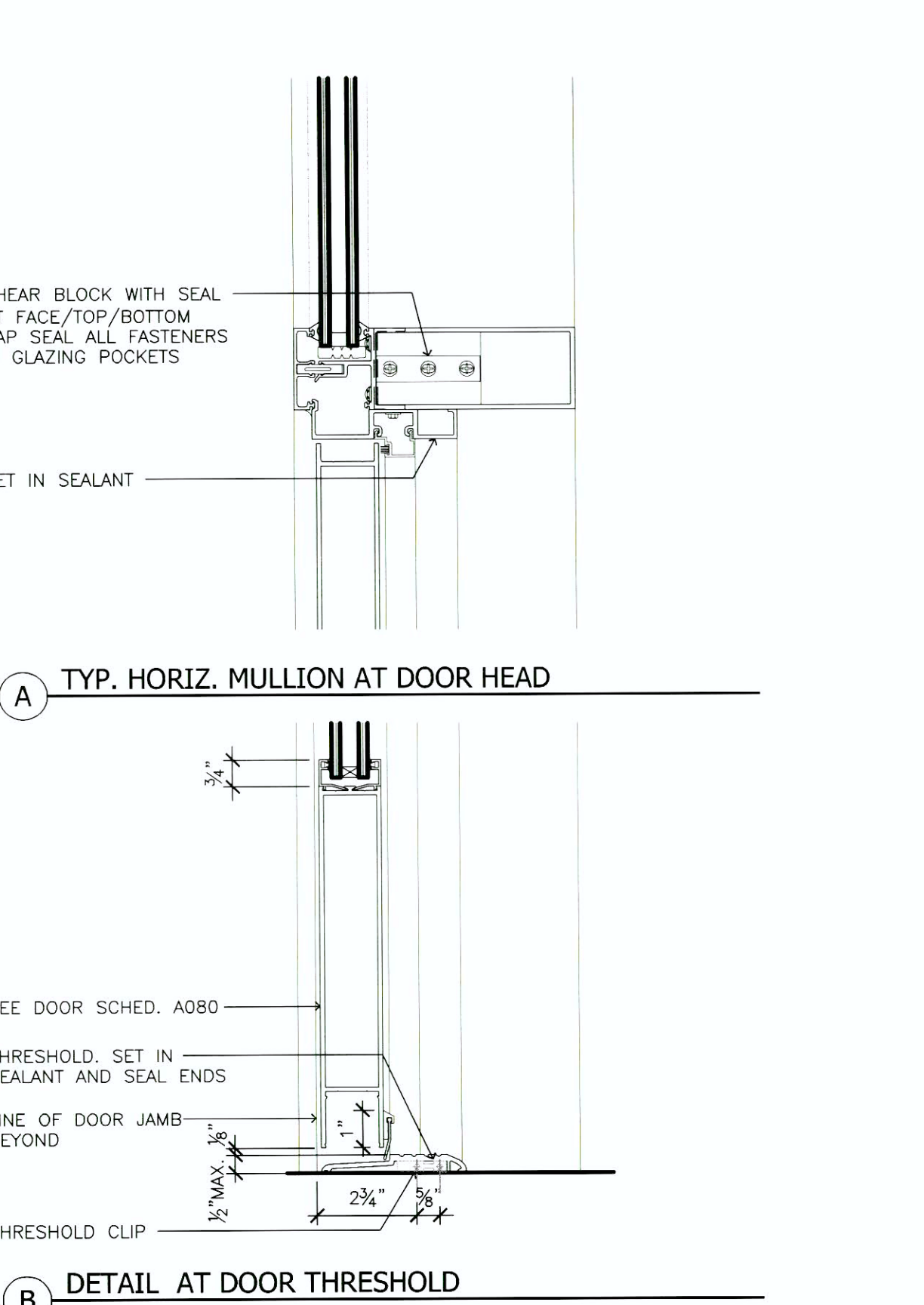
1 WINDOW WALL DETAILS
3" = 1'-0"



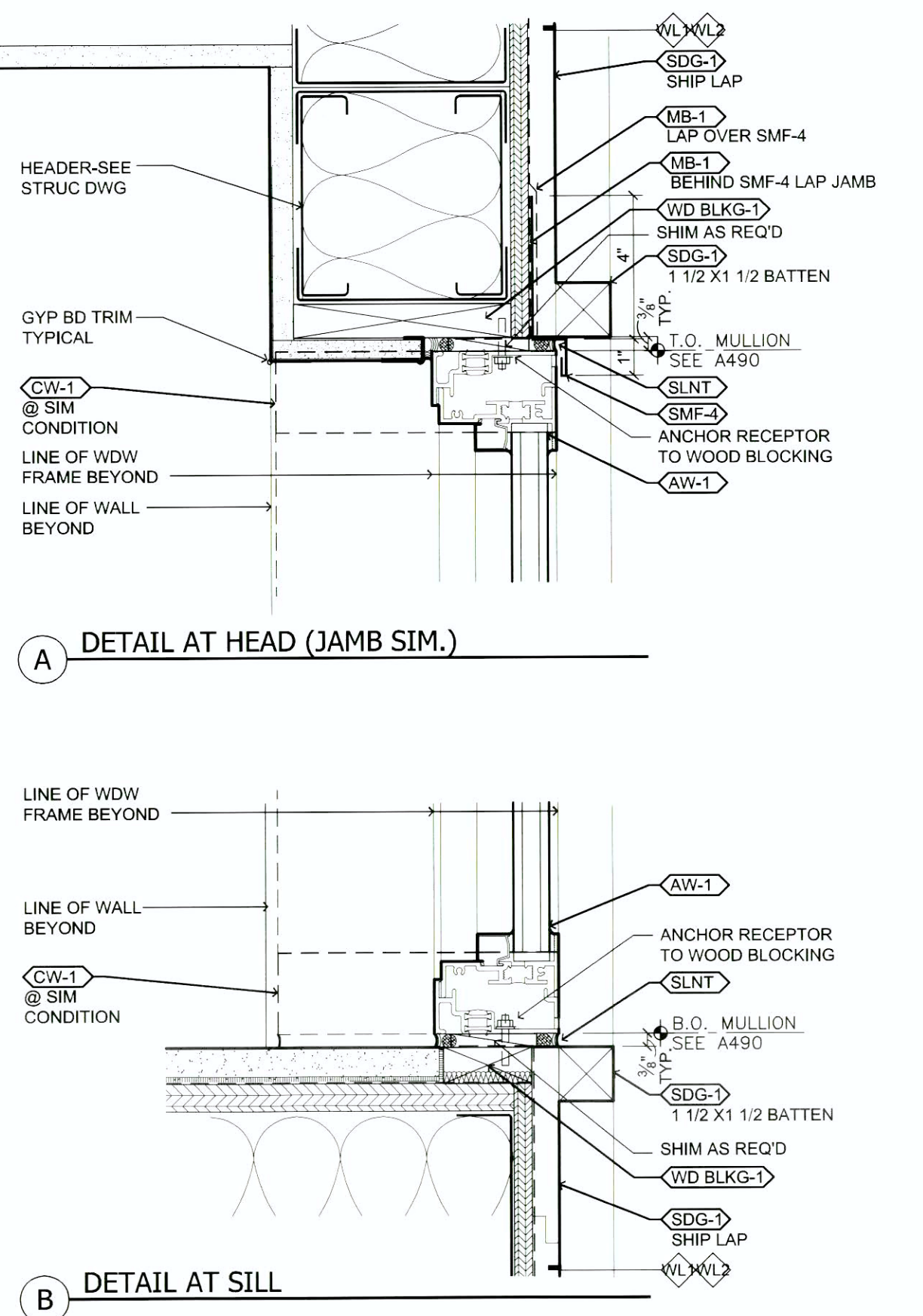
3 FIXED WINDOW SECTIONS
3" = 1'-0"



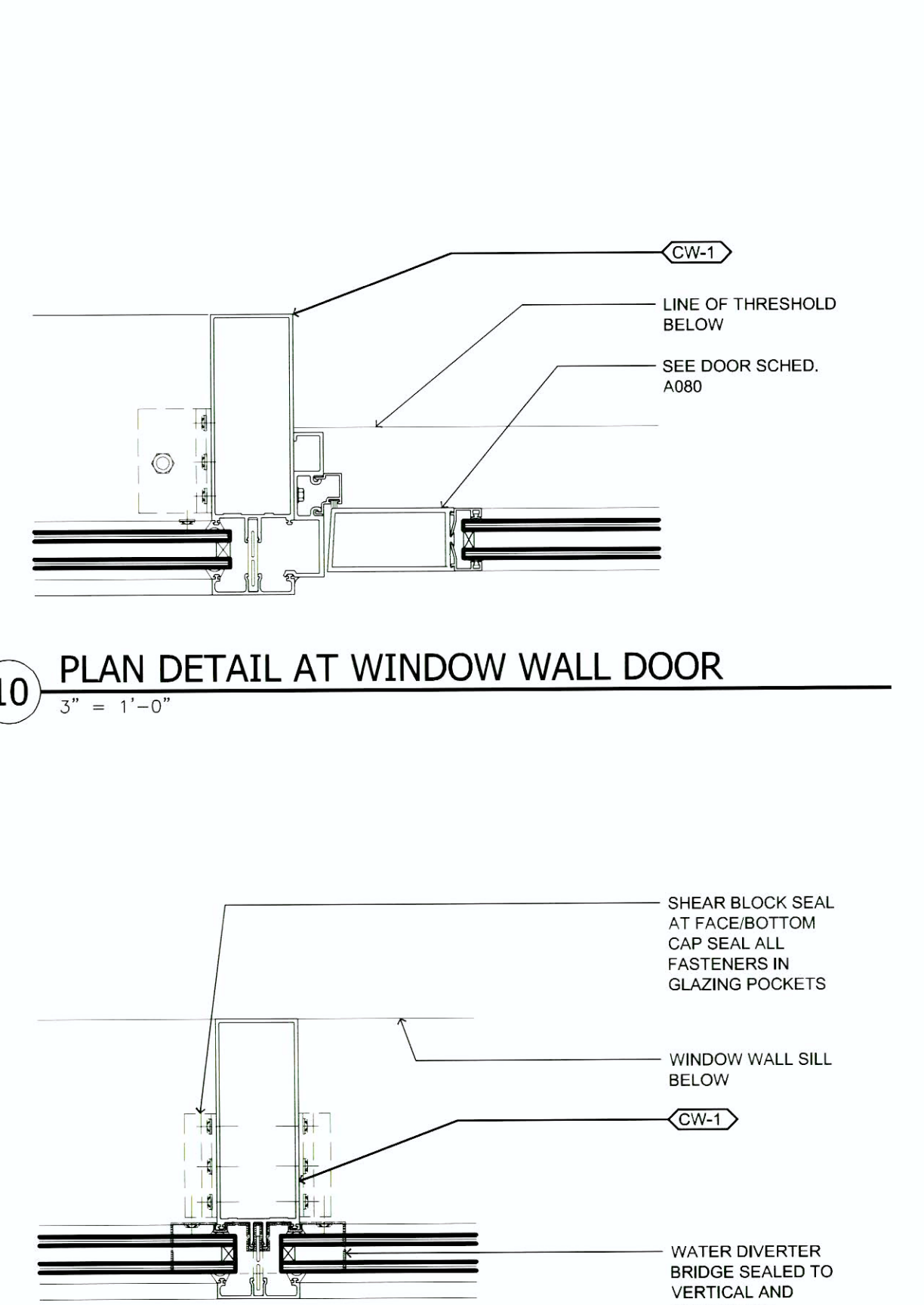
2 FIXED WINDOW SECTIONS AT WOOD SIDING
3" = 1'-0"



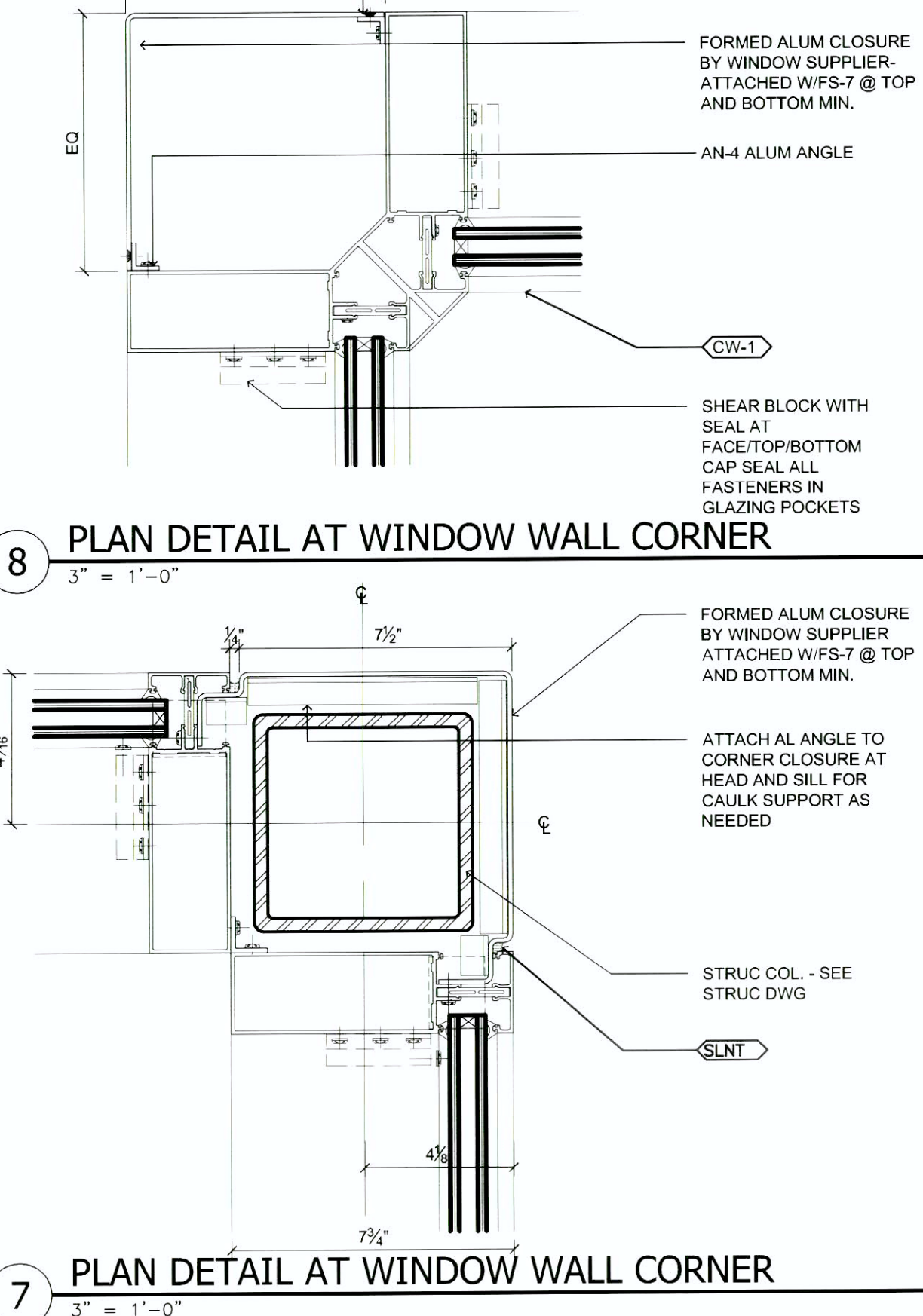
4 OPERABLE WINDOW SECTIONS AT WOOD SIDING
3" = 1'-0"



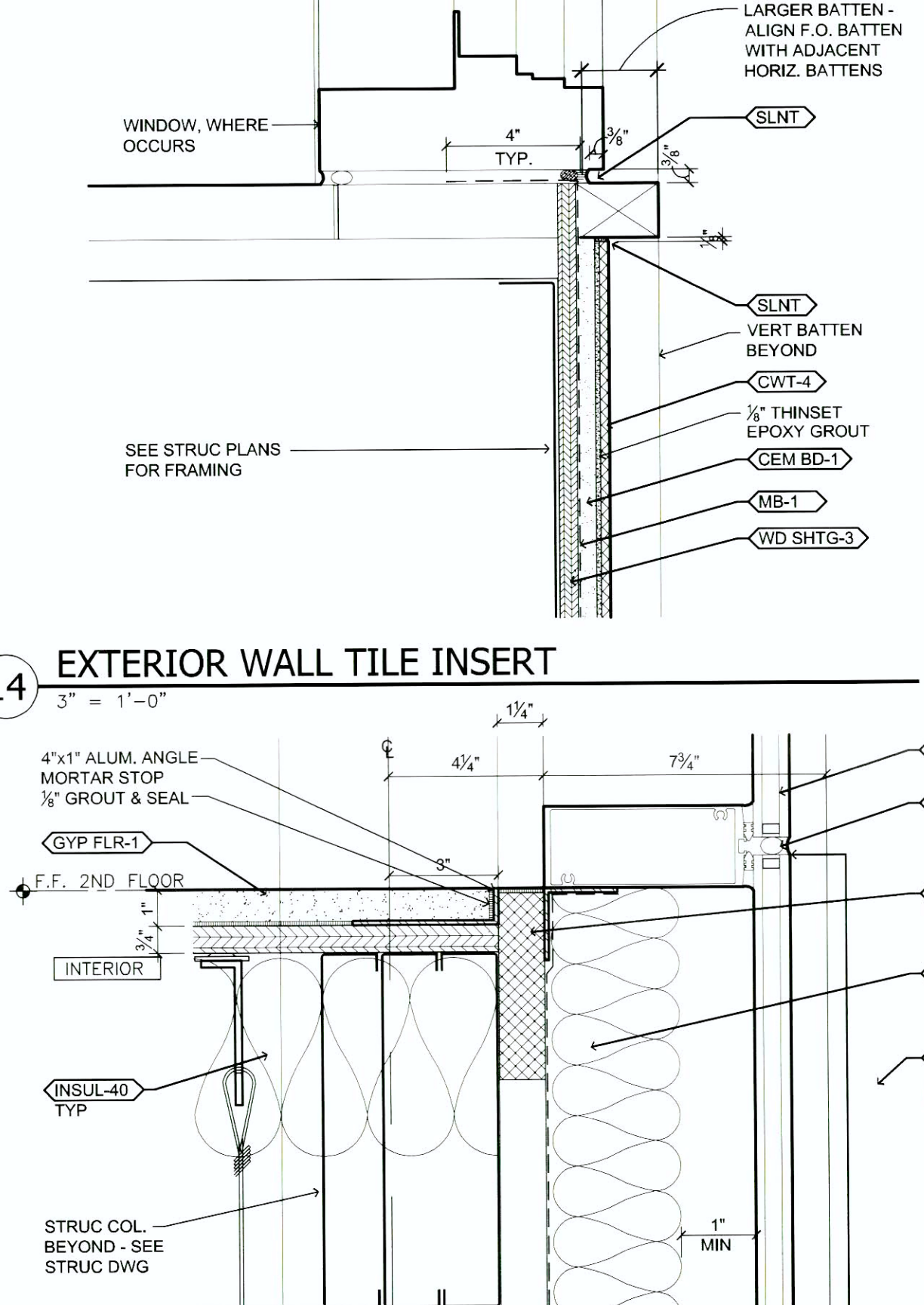
6 OUTSIDE CW CORNER AT ENTRY
3" = 1'-0"



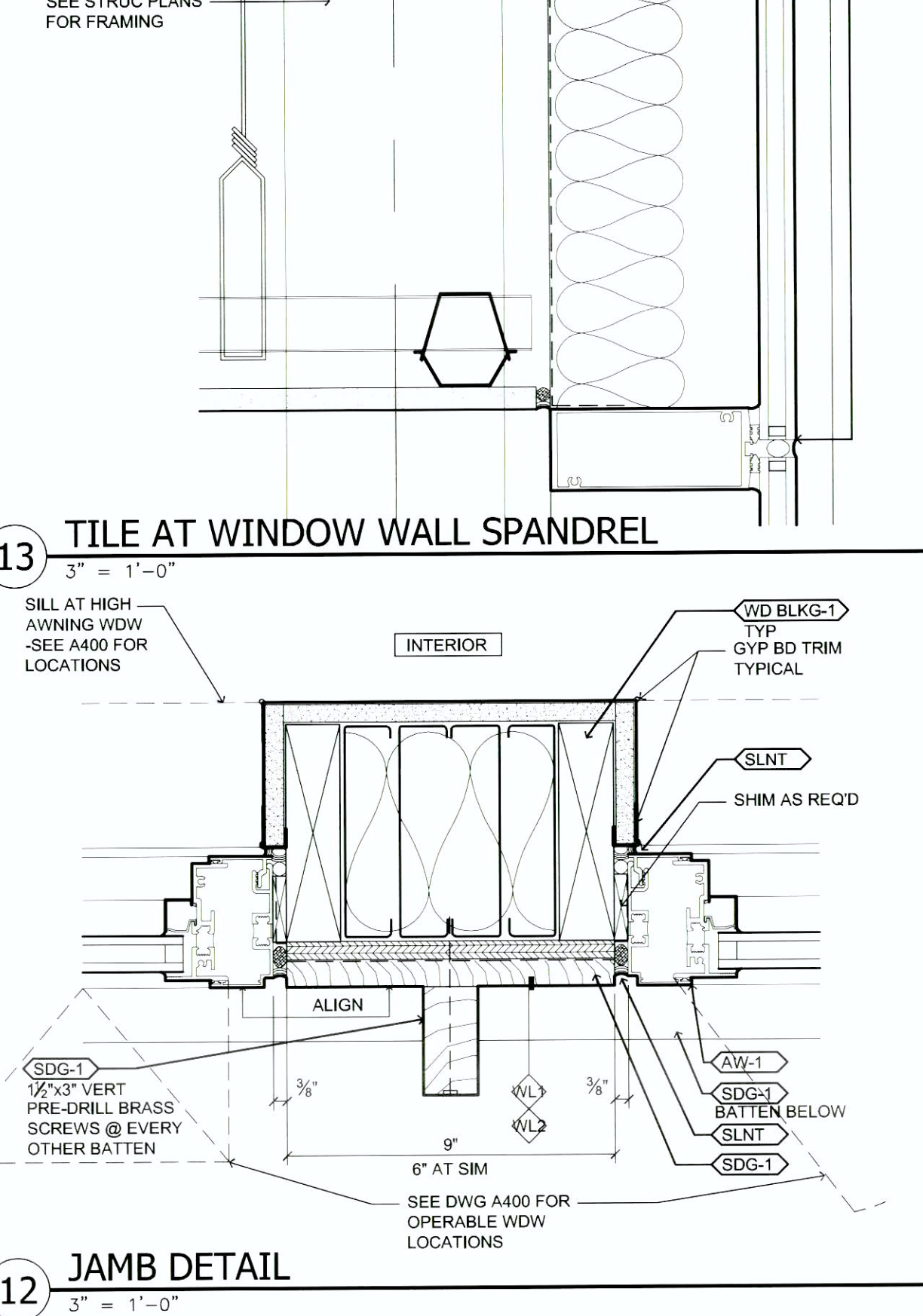
10 PLAN DETAIL AT WINDOW WALL DOOR
3" = 1'-0"



8 PLAN DETAIL AT WINDOW WALL CORNER
3" = 1'-0"



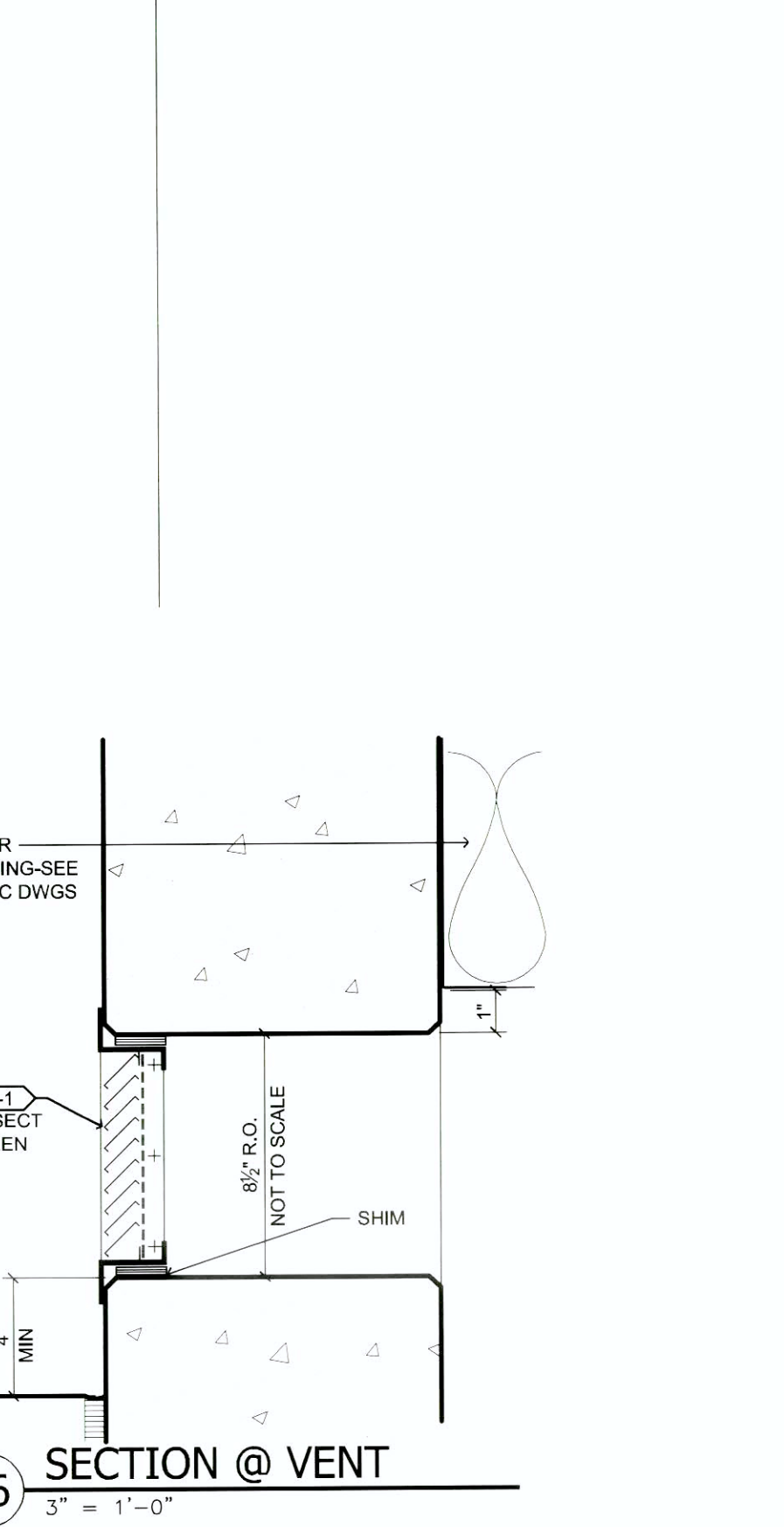
14 EXTERIOR WALL TILE INSERT
3" = 1'-0"



13 TILE AT WINDOW WALL SPANDREL
3" = 1'-0"



12 JAMB DETAIL
3" = 1'-0"



16 SECTION @ VENT
3" = 1'-0"

11 PLAN DETAIL AT MULLION EXTENSION
3" = 1'-0"

15 SILL AT AWNING WDW
3" = 1'-0"

CONSULTANTS:

STRUCTURAL: DEGENKOLB ENGINEERS; 235 MONGOMERY STREET., SUITE 500; SAN FRANCISCO, CA 94104
MECHANICAL: HTC ENGINEERS; 1529 CYPRESS ST., SUITE 103; WALNUT CREEK, CA 94596
ELECTRICAL: BAY AREA CONSULTING ENGINEERS; 311 CALIFORNIA STREET, SUITE 720; SAN FRANCISCO, CA 94104
CIVIL ENGINEER: GHD CIVIL ENGINEERS; 2235 MERCURY WAY, SUITE 150; SANTA ROSA, CA 95407
ESTIMATING: CUMMING CORPORATION; 1970 BROADWAY, SUITE 630; OAKLAND, CA 94612
SURVEYORS: MARTIN M. RON ASSOCIATES, INC.; 859 HARRISON ST., SUITE 200; SAN FRANCISCO, CA 94107
UTILITY LOCATORS: CRUZ BROTHERS LOCATORS; P.O. BOX 66768; SCOTTS VALLEY, CA 95067

ARCHITECT/ENGINEERS:

Architecture | Engineering | Planning
Hammell, Green and Abrahamson, Inc.
170 Maiden Lane - Fifth Floor
San Francisco, California USA 94108
Telephone 415.814.6910
Facsimile 415.962.2598



Drawing Title

EXTERIOR DETAILS: DOORS
AND WINDOWS
Scale: AS NOTED

Approved: Project Director

Project Title

VA Medical Center
Seismic Replacement And
Retrofit

Location

San Francisco, CA

Date

10 / 22 / 2012

Checked

HGA

Drawn

HGA

Project Number

2941-001-00

Building Number

9, 10 & 22

Drawing Number

A491

Office of
Facilities
Management

Department of
Veterans Affairs