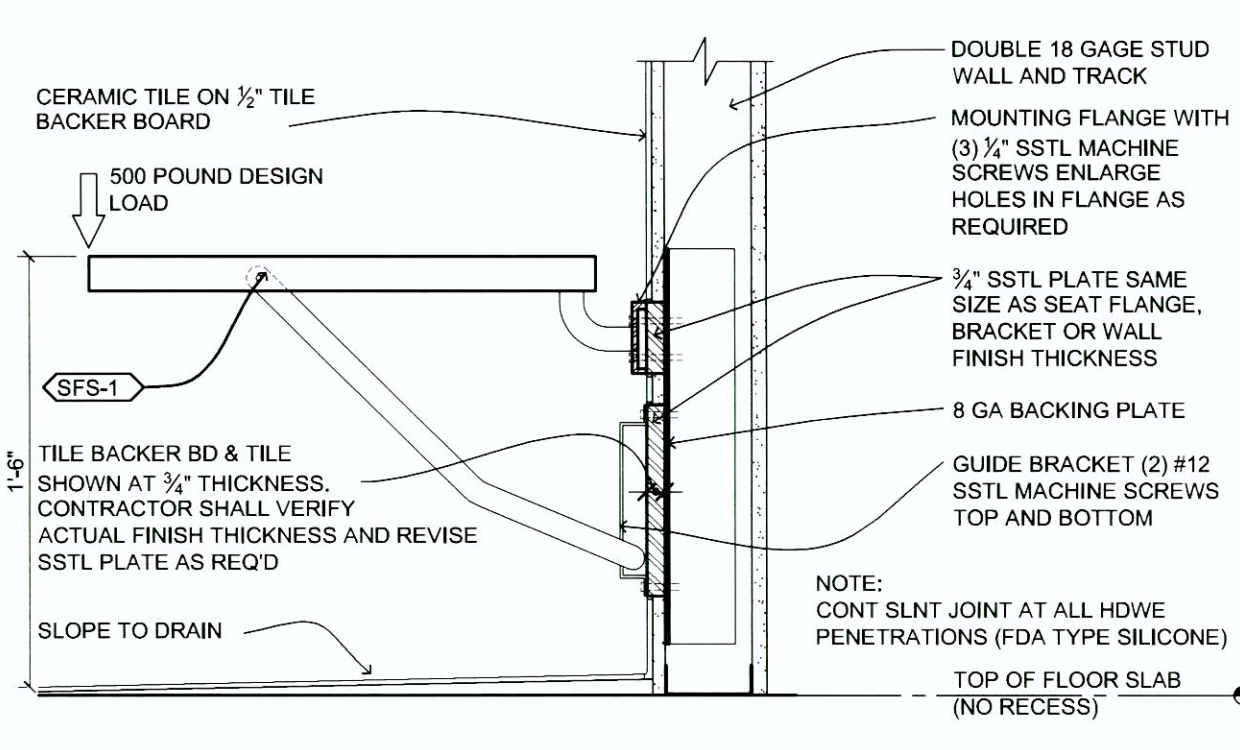
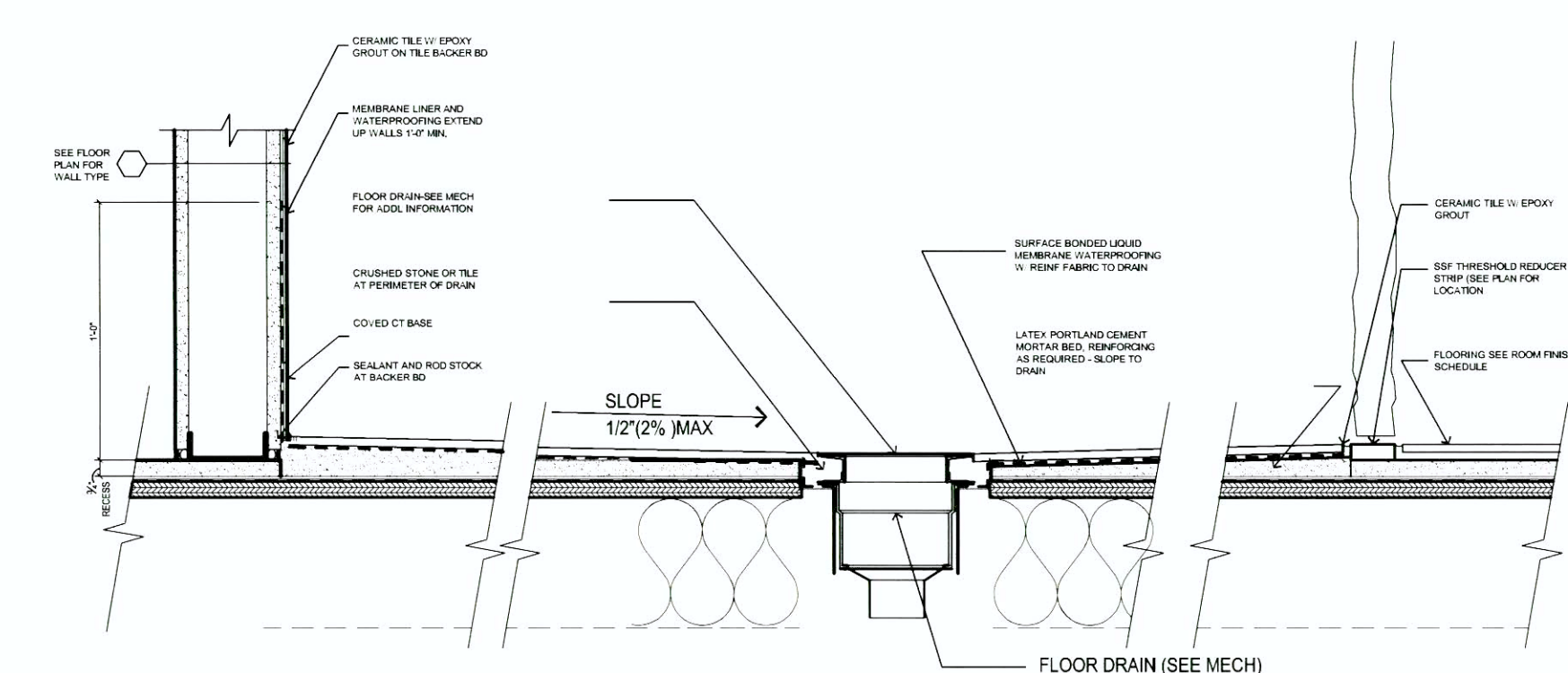


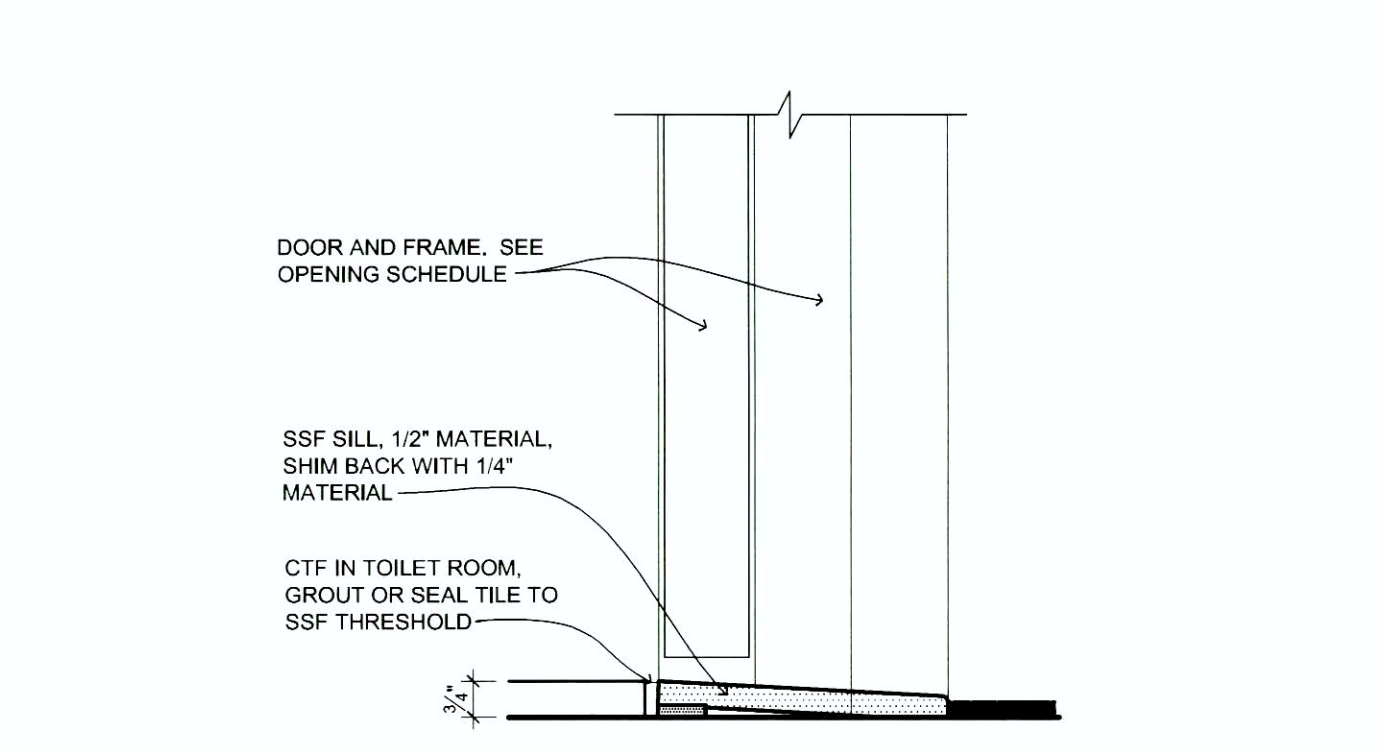
1 FOLDING SHOWER SEAT PLAN  
3" = 1'-0"



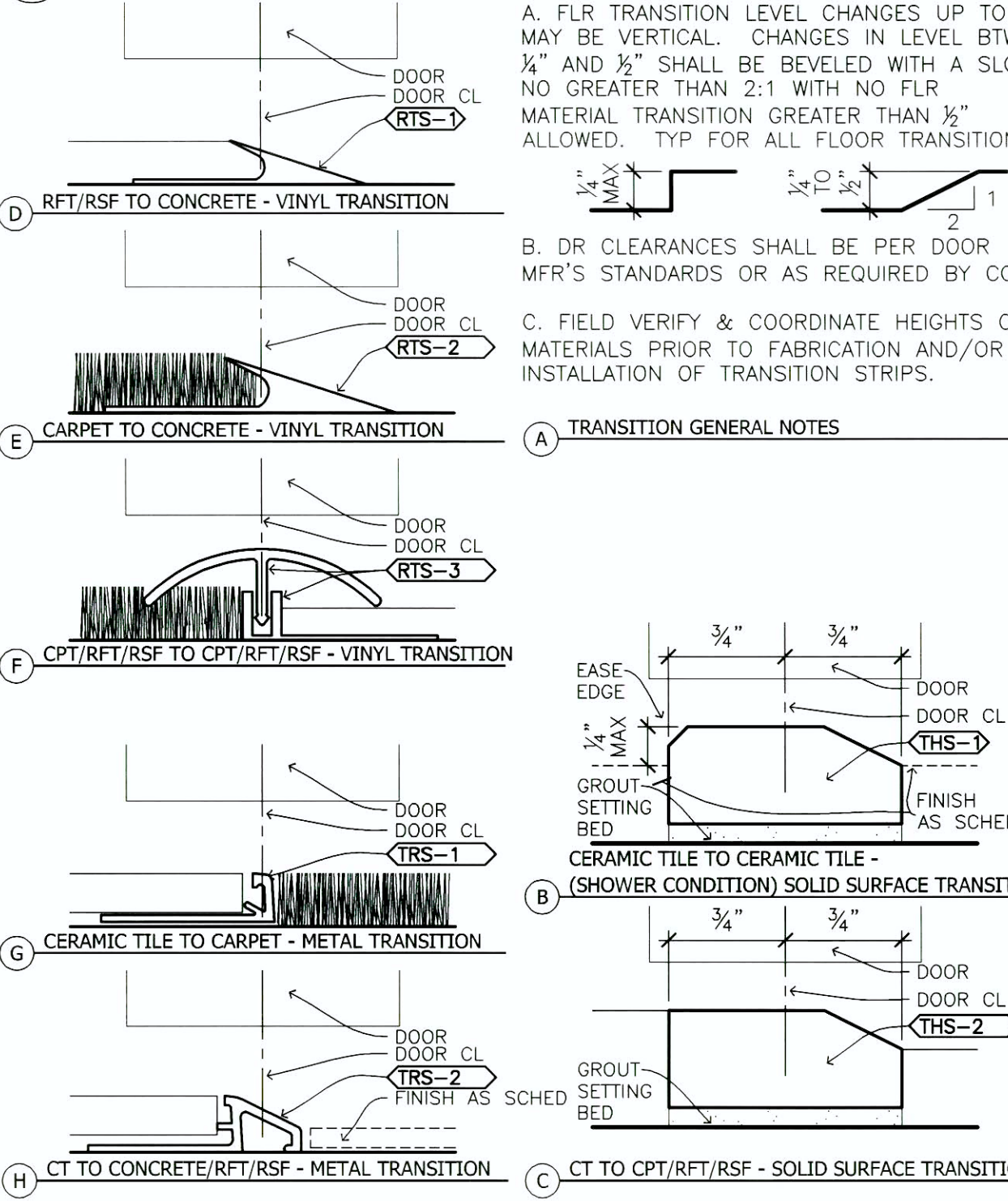
2 FOLDING SHOWER SEAT SECTION  
1 1/2" = 1'-0"



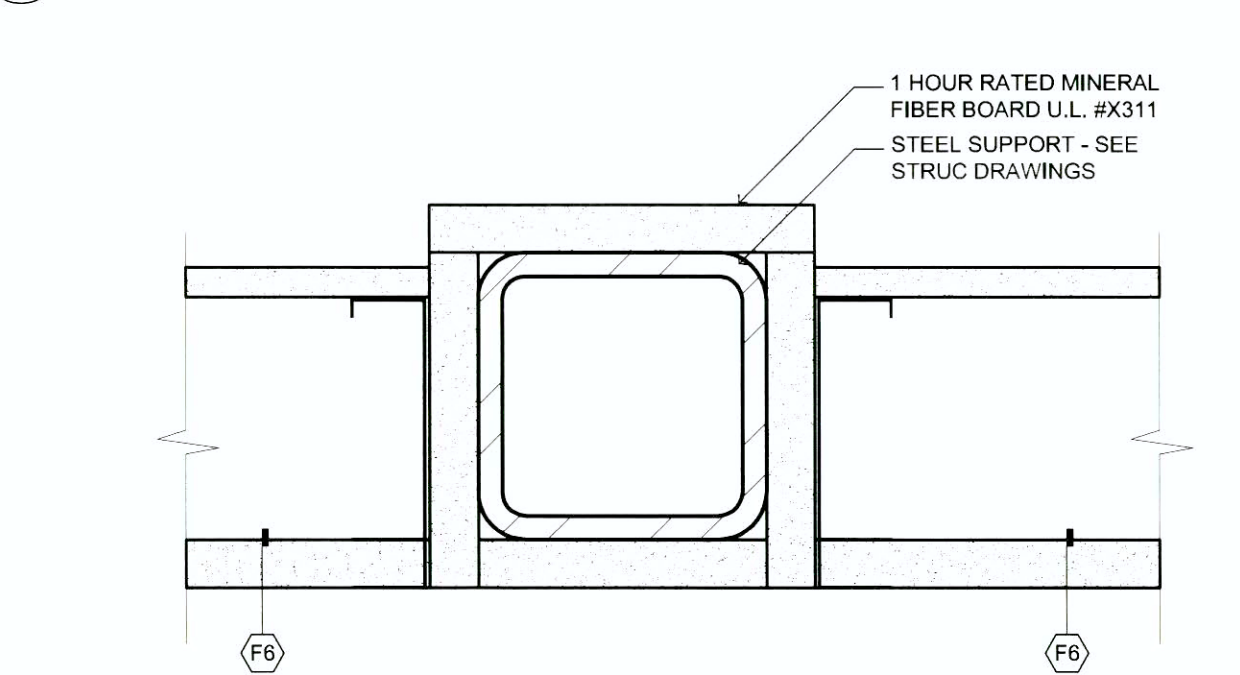
3 SHOWER/TOILET ROOM FLOOR  
1 1/2" = 1'-0"



4 SOLID SURFACE THRESHOLD AT TLT/SHWR ROOMS  
3" = 1'-0"



5 TRANSITION NOTES AND DETAILS  
1'-0" = 1'-0"



6 RATED COLUMN AT ELEV. SHAFT WALL  
3" = 1'-0"

## CONSULTANTS:

STRUCTURAL:	DEGENKOLB ENGINEERS; 235 MONGOMERY STREET., SUITE 500; SAN FRANCISCO, CA 94104
MECHANICAL:	HTC ENGINEERS; 1529 CYPRESS ST., SUITE 103; WALNUT CREEK, CA 94596
ELECTRICAL:	BAY AREA CONSULTING ENGINEERS; 311 CALIFORNIA STREET, SUITE 720; SAN FRANCISCO, CA 94104
CIVIL ENGINEER:	GHD CIVIL ENGINEERS; 2235 MERCURY WAY, SUITE 150; SANTA ROSA, CA 95407
ESTIMATING:	CUMMING CORPORATION; 1970 BROADWAY, SUITE 630; OAKLAND, CA 94612
SURVEYORS:	MARTIN M. RON ASSOCIATES, INC.; 859 HARRISON ST., SUITE 200; SAN FRANCISCO, CA 94107
UTILITY LOCATORS:	CRUZ BROTHERS LOCATORS; P.O. BOX 66768; SCOTTS VALLEY, CA 95067

## ARCHITECT/ENGINEERS:

HGA  
Architecture | Engineering | Planning  
Hammel, Green and Abrahamson, Inc.  
170 Maiden Lane - Fifth Floor  
San Francisco, California USA 94108  
Telephone 415.814.6910  
Facsimile 415.962.2598



Drawing Title

**INTERIOR DETAILS**

Scale: **AS NOTED**

Approved: Project Director

Project Title

**VA Medical Center  
Seismic Replacement And  
Retrofit**

Location  
**San Francisco, CA**

Date  
**10 / 22 / 2012**

Checked  
**.**

Drawn  
**HGA**

Project Number

**2941-001-00**

Building Number  
**9, 10 & 22**

Drawing Number

**A662**

**Office of  
Facilities  
Management**

Department of  
Veterans Affairs

Revisions: \_\_\_\_\_ Date \_\_\_\_\_