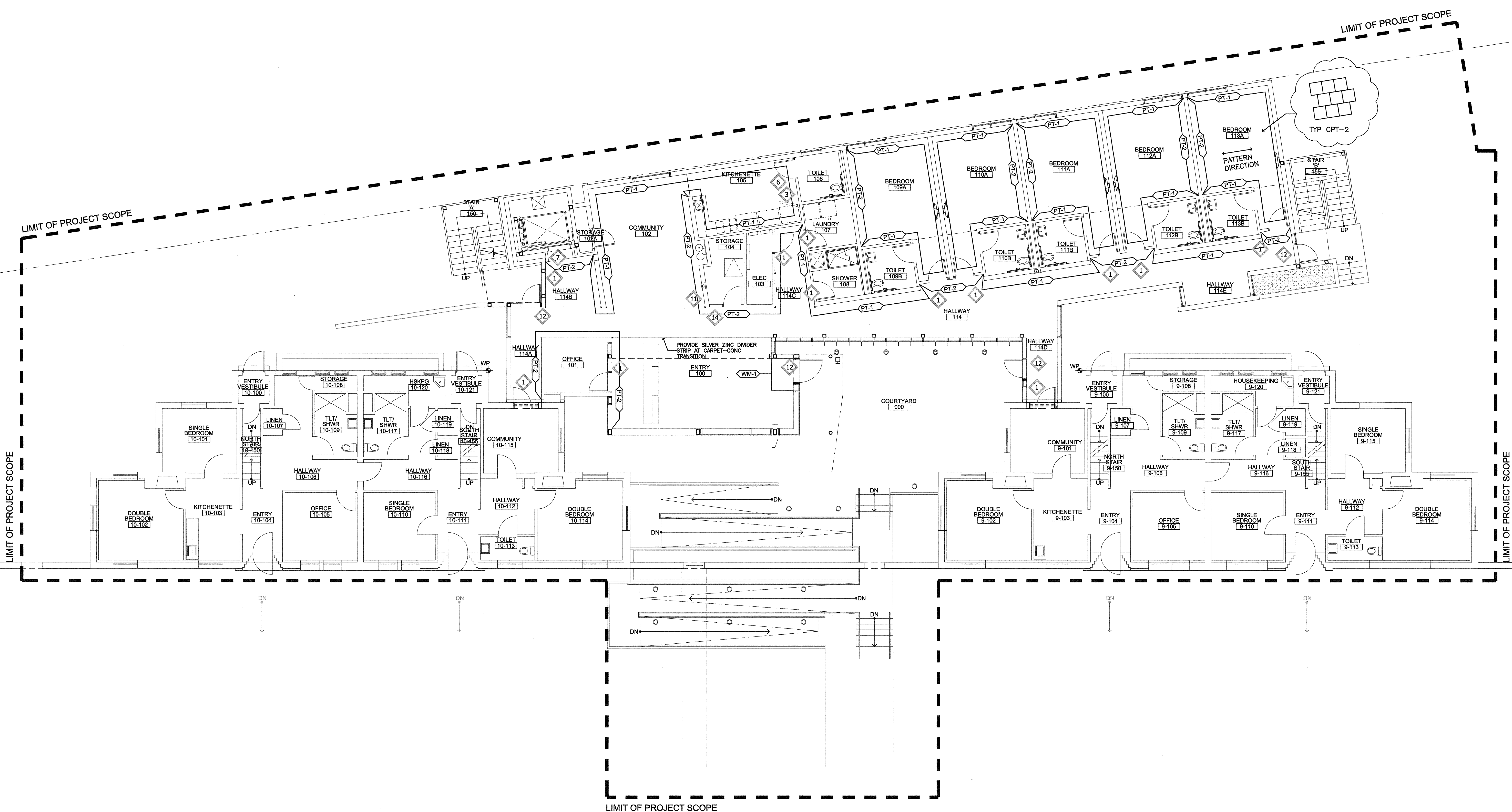


one and one half inches = one foot
one thirty second inch = one foot
one sixteenth inch = one foot
one eighth inch = one foot
one quarter inch = one foot
three eighths inch = one foot
one half inch = one foot
three quarters inch = one foot
one inch = one foot



SIGNAGE GENERAL NOTES
A. SEE DETAILS 13 & 14 /A620 FOR SIGNAGE INFORMATION.

Revisions:		Date	
CONSULTANTS:			
STRUCTURAL:	DEGENKOLB ENGINEERS; 235 MONGOMERY STREET, SUITE 500; SAN FRANCISCO, CA 94104		
MECHANICAL:	HTC ENGINEERS; 1529 CYPRESS ST., SUITE 103; WALNUT CREEK, CA 94596		
ELECTRICAL:	BAY AREA CONSULTING ENGINEERS; 311 CALIFORNIA STREET, SUITE 720; SAN FRANCISCO, CA 94104		
CIVIL ENGINEER:	GHD CIVIL ENGINEERS; 2235 MERCURY WAY, SUITE 150; SANTA ROSA, CA 95407		
ESTIMATING:	CUMMING CORPORATION; 1970 BROADWAY, SUITE 630; OAKLAND, CA 94612		
SURVEYORS:	MARTIN M. RON ASSOCIATES, INC.; 859 HARRISON ST., SUITE 200; SAN FRANCISCO, CA 94107		
UTILITY LOCATORS:	CRUZ BROTHERS LOCATORS; P.O. BOX 66768; SCOTT'S VALLEY, CA 95067		
ARCHITECT/ENGINEERS:		hga	
Architecture Engineering Planning Hammel, Green and Abrahamson, Inc. 170 Maiden Lane - Fifth Floor San Francisco, California USA 94108 Telephone 415.814.6910 Facsimile 415.962.2598			
Drawing Title GROUND FLOOR FINISH AND SIGNAGE PLAN Scale: 1/8" = 1'-0"		Project Title VA Medical Center Seismic Replacement and Retrofit	
Approved: Project Director		Location San Francisco, CA	
Date 1/22/2013		Checked HGA	Drawn HGA
Project Number 2941-001-00		Building Number 9, 10 & 22	
Drawing Number 1200		Office of Facilities Management	
		Department of Veterans Affairs	