

SHEET NOTES:

- SEE DETAIL SHEET S-511 FOR SHEAR WALL SCHEDULE (W#)  
SEE TABLE THIS SHEET FOR LIGHT GAUGE JOIST SCHEDULE (J#)  
SEE TABLE THIS SHEET FOR LIGHT GAUGE BUILT UP BEAM SCHEDULE (B#)  
SEE 15/S-513 FOR HOLDOWN (H#)
- SEE ARCHITECTURAL DRAWINGS FOR SIZE AND LOCATION OF OPENINGS IN WALLS AND FLOORS.
- SEE THE FOLLOWING DRAWINGS FOR DETAILS NOT SPECIFICALLY REFERENCED:  
S-501 TYPICAL CONCRETE DETAILS  
S-511, S-512 & S-513 TYPICAL LIGHT GAUGE DETAILS  
S-521 TYPICAL STEEL DETAILS  
S-531 TYPICAL METAL DECK DETAILS  
S-541 TYPICAL WOOD DETAILS
- FINISHED FLOOR ELEVATION IS +341'.
- ALL WALLS SHOWN ON PLAN ARE LIGHT GAUGE BEARING WALLS AND/OR SHEAR WALLS. REF. 13/S-511 FOR TYPICAL STUD SIZES, U.O.N.
- SEE TYPICAL LIGHT GAUGE DETAILS FOR JOIST BRIDGING REQUIREMENTS.
- WHERE BUILT-UP BEAM SIZES AT OPENINGS NOT INDICATED, SEE TYPICAL DETAILS FOR FRAMING.

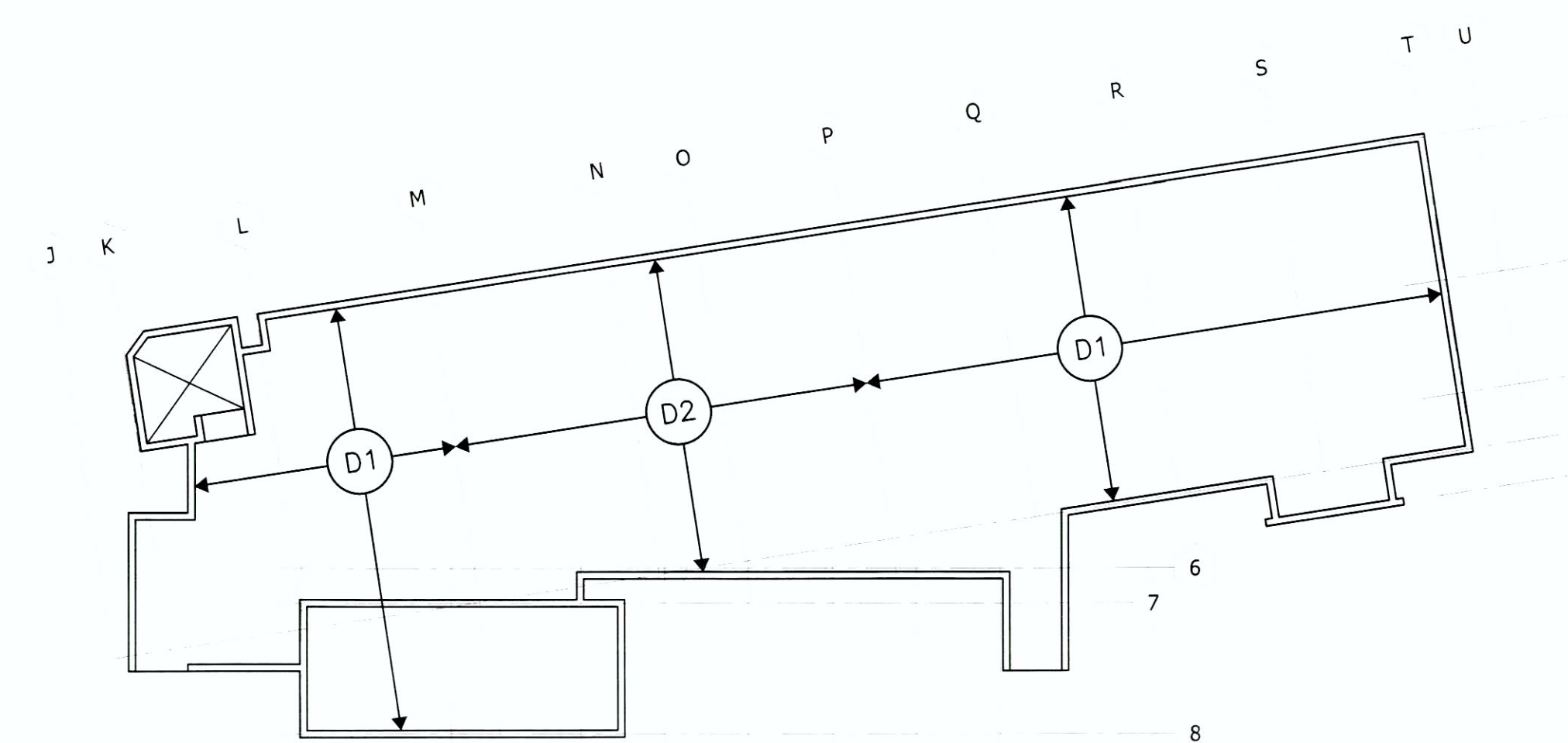
KEY NOTES:

- BEARING WALL, TYP.
- NOT USED
- FLOOR DECK, SEE FLOOR ATTACHMENT KEY PLAN.
- WEB STIFFENER REQUIRED EACH END, REF. 1/S-513.
- WEB STIFFENER REQUIRED EACH END, REF. 1/S-513.  
ALTERNATE, PROVIDE 1000S162-54 WITH NO STIFFENER.
- WEB STIFFENER REQUIRED EACH END, REF. 1/S-513.  
ALTERNATE, PROVIDE 1000S250-68 WITH NO STIFFENER.
- CONCRETE STEM WALL BELOW, TYP.
- 10" LOBBY WALL, SEE TYP. DETAILS.
- ATTACH JOIST TO BEAM WITH SIMPSON S/LS70. FILL ALL HOLES
- STEEL ROUND HSS CANOPY COLUMNS, REF. 12/S-522.  
S.A.D. FOR DIMENSIONS
- STRINGER CONT. W/ MITRED CONN.
- C12x25 STAIR FRAMING, TYP. H.D.G.

1 GROUND FLOOR FRAMING PLAN  
1/4" = 1'-0"

LIGHT GAUGE STEEL JOISTS		
MARK	JOIST SIZE & SPACING	REMARK
J1	1000S162-43 @ 16" o.c.	4
J2	1000S200-54 @ 16" o.c.	
J3	1000S250-97 @ 16" o.c.	
J4	1000S162-43 @ 32" o.c.	5
J5	1000S250-54 @ 32" o.c.	6

LIGHT GAUGE BUILT-UP BEAMS		
MARK	BEAM COMPONENTS	REMARK
B1	3-600S200-54	REF. 9/S-512 4
B2	3-1000S200-54	REF. 9/S-512 4
B3	3-1200S200-97	REF. 9/S-512 4
B4	2-1000S200-54	REF. 9/S-512 4
*	INDICATES T.O. BEAM FLUSH W/ WALL TRACK. REF. 3/S-512 FOR BEAM TO WALL CONNECTION.	



SEE 2/S-541 FOR FLOOR ATTACHMENT SCHEDULE

FLOOR ATTACHMENT KEY PLAN

<b>CONSULTANTS:</b> STRUCTURAL: DEGENKOLB ENGINEERS, 235 MONTGOMERY STREET, SUITE 500, SAN FRANCISCO, CA 94104 MECHANICAL: HTG ENGINEERS, 1529 CYPRESS ST., SUITE 105, WALNUT CREEK, CA 94596 ELECTRICAL: BAY AREA CONSULTING ENGINEERS, INC., 96 SUITE C SPRINGTOWN CENTER, VALLEJO, CA 94590 CIVIL ENGINEER: WINZLER & KELLY, 417 MONTGOMERY ST., SUITE 700, SAN FRANCISCO, CA 94104 ESTIMATING: CUMMING CORPORATION, 1970 BROADWAY, SUITE 630, OAKLAND, CA 94612 SURVEYORS: MARTIN M. RON ASSOCIATES, INC., 859 HARRISON ST., SUITE 200, SAN FRANCISCO, CA 94107 UTILITY LOCATORS: CRUZ BROTHERS LOCATORS, P.O. BOX 66768, SCOTTS VALLEY, CA 95067	<b>ARCHITECT/ENGINEERS:</b> HGA Architecture   Engineering   Planning Hammel, Green and Abrahamson, Inc. 445 Bush Street - Fourth Floor San Francisco, California USA 94108 Telephone 415.962.2592 Facsimile 415.962.2598	Drawing Title <b>GROUND FLOOR - FRAMING PLAN</b> Scale: 1/4"=1'-0" Approved: Project Director	Project Title <b>VA Medical Center Seismic Replacement And Retrofit</b> Location <b>San Francisco, CA</b> Date <b>10 / 22 / 2012</b>	Project Number <b>2941-001-00</b> Building Number <b>22</b> Drawing Number <b>SF-101A</b>	<b>Office of Facilities Management</b> Department of Veterans Affairs
<b>BACKCHECK #1</b> 100% CONSTRUCTION DOCUMENTS 95% CONSTRUCTION DOCUMENTS Revisions:	3/25/11 9/10/08 8/8/08 Date				