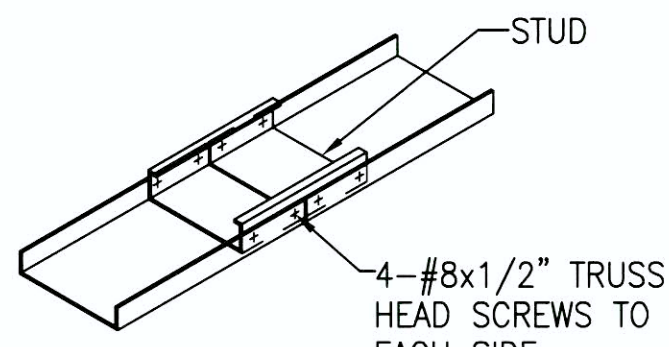
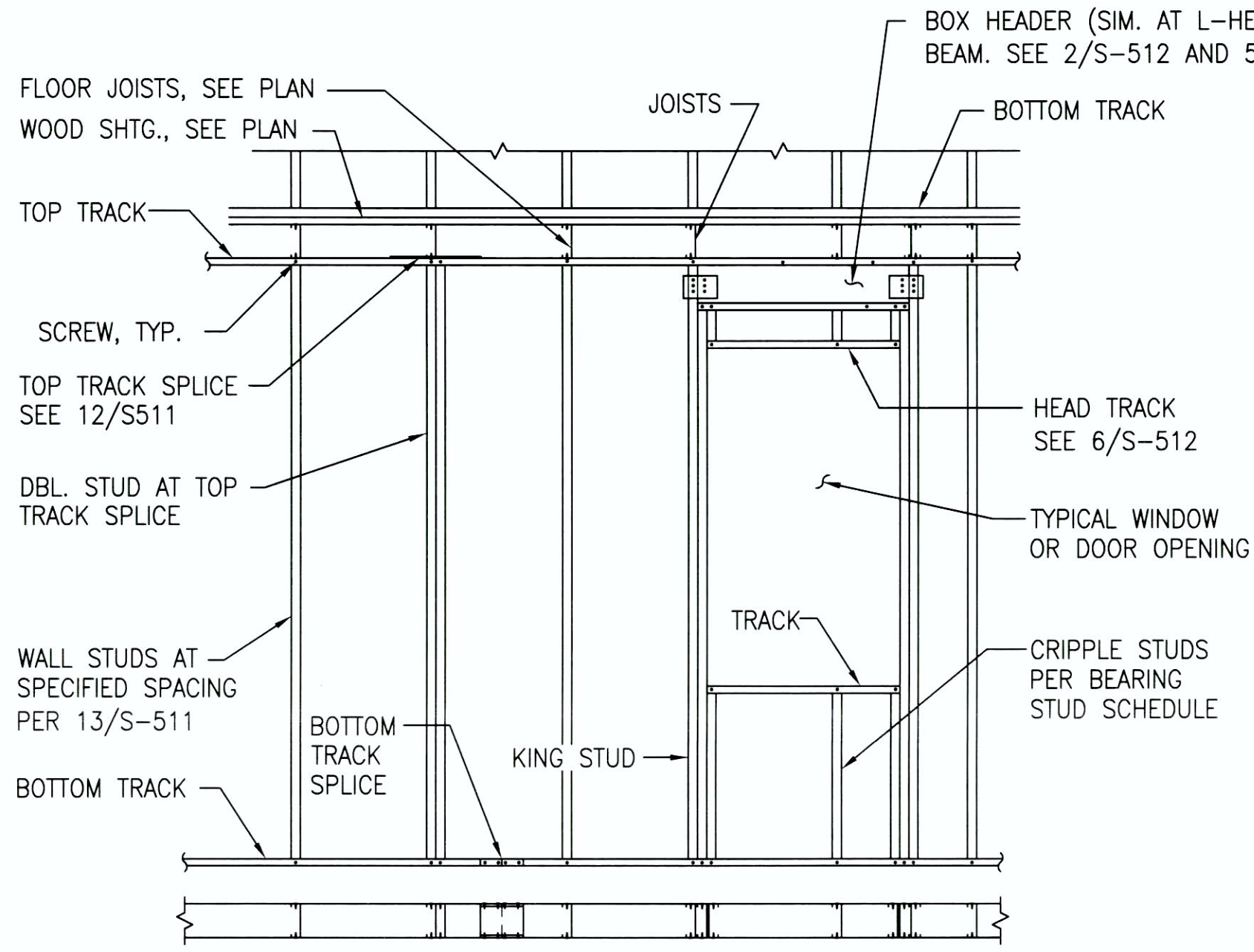


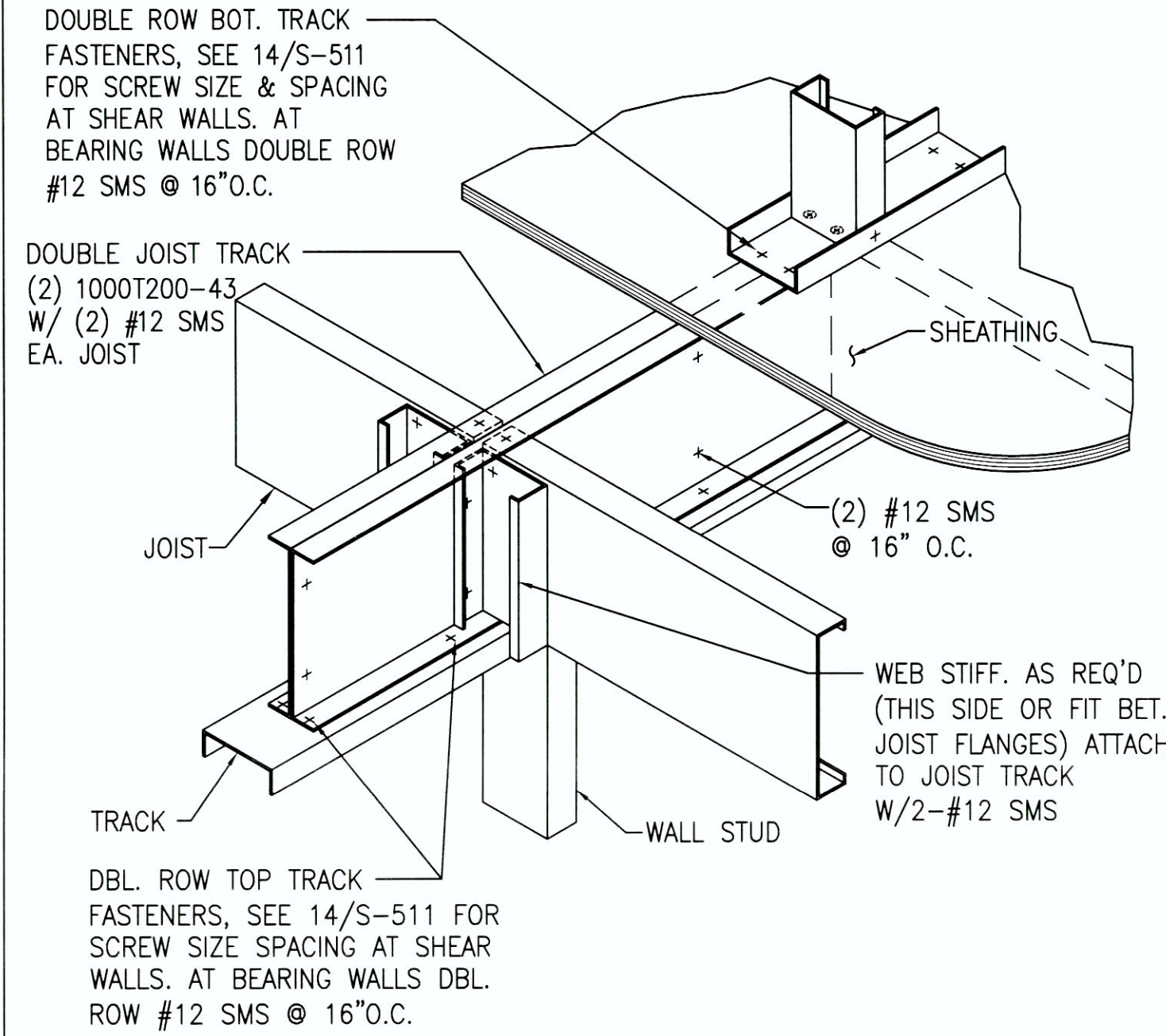
BEARING STUD SCHEDULE	
	STUD SIZE @ 16" O.C.
INTERIOR WALLS	600S200-54
EXTERIOR WALLS	600S137-43
10" LOBBY WALLS	1000S137-43

- NOTES:
- SEE PLAN FOR BEARING WALL LOCATIONS.
  - SEE 5/S-201 FOR EXTENTS OF 10" LOBBY WALLS.

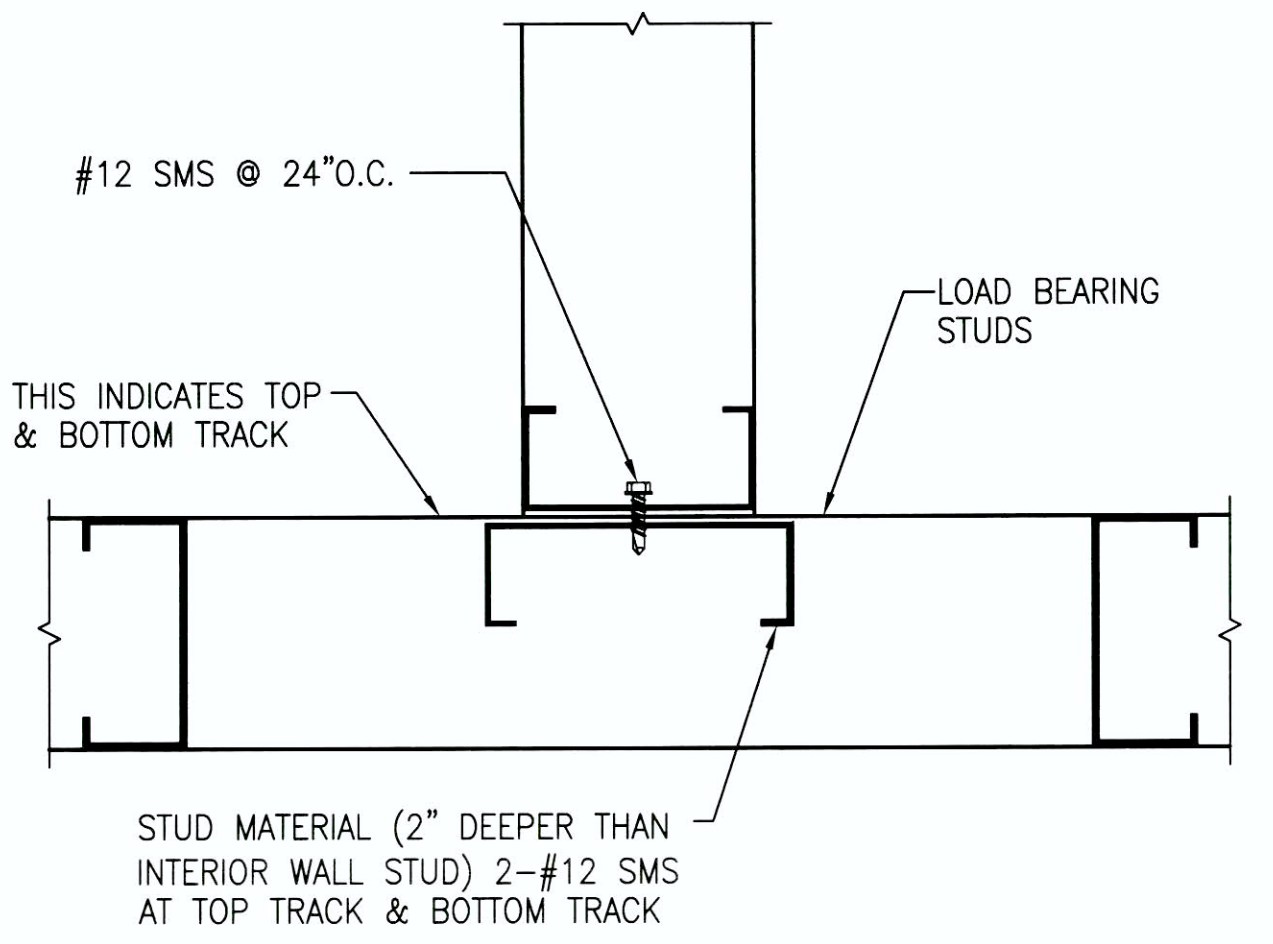


BOTTOM TRACK SPLICE

- NOTES:
- WALL STUDS SPACING @ 16" O.C.
  - USE #8 SMS FOR ALL CONNECTIONS.
  - USE UN-PUNCHED MATERIAL FOR HEADERS.
  - TOP AND BOTTOM TRACK SHALL MATCH STUD SIZE AND THICKNESS AND SHALL HAVE MINIMUM 1 1/2" LEGS.



JOIST FRAMING  
AT INTERIOR BEARING/SHEAR WALL



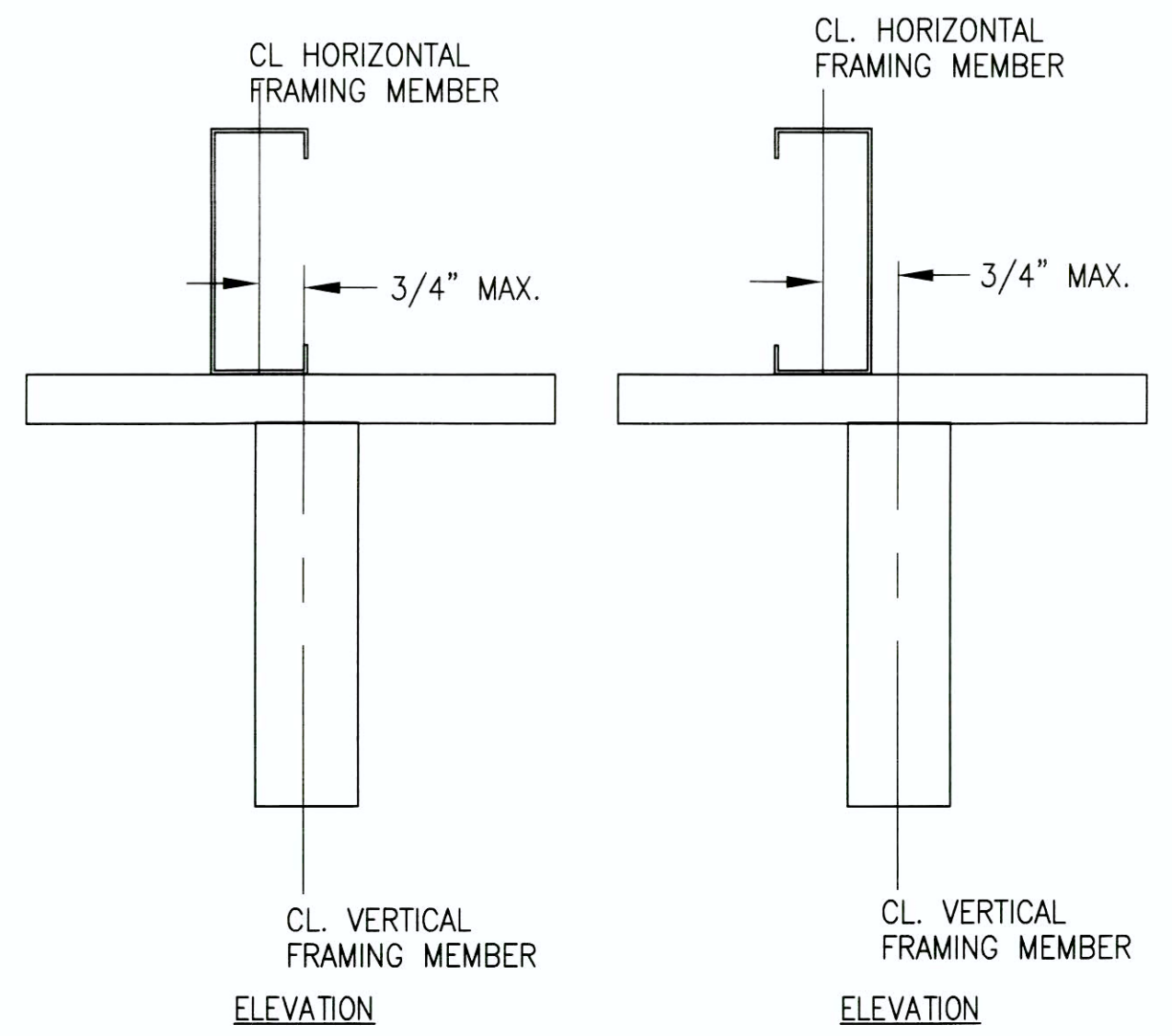
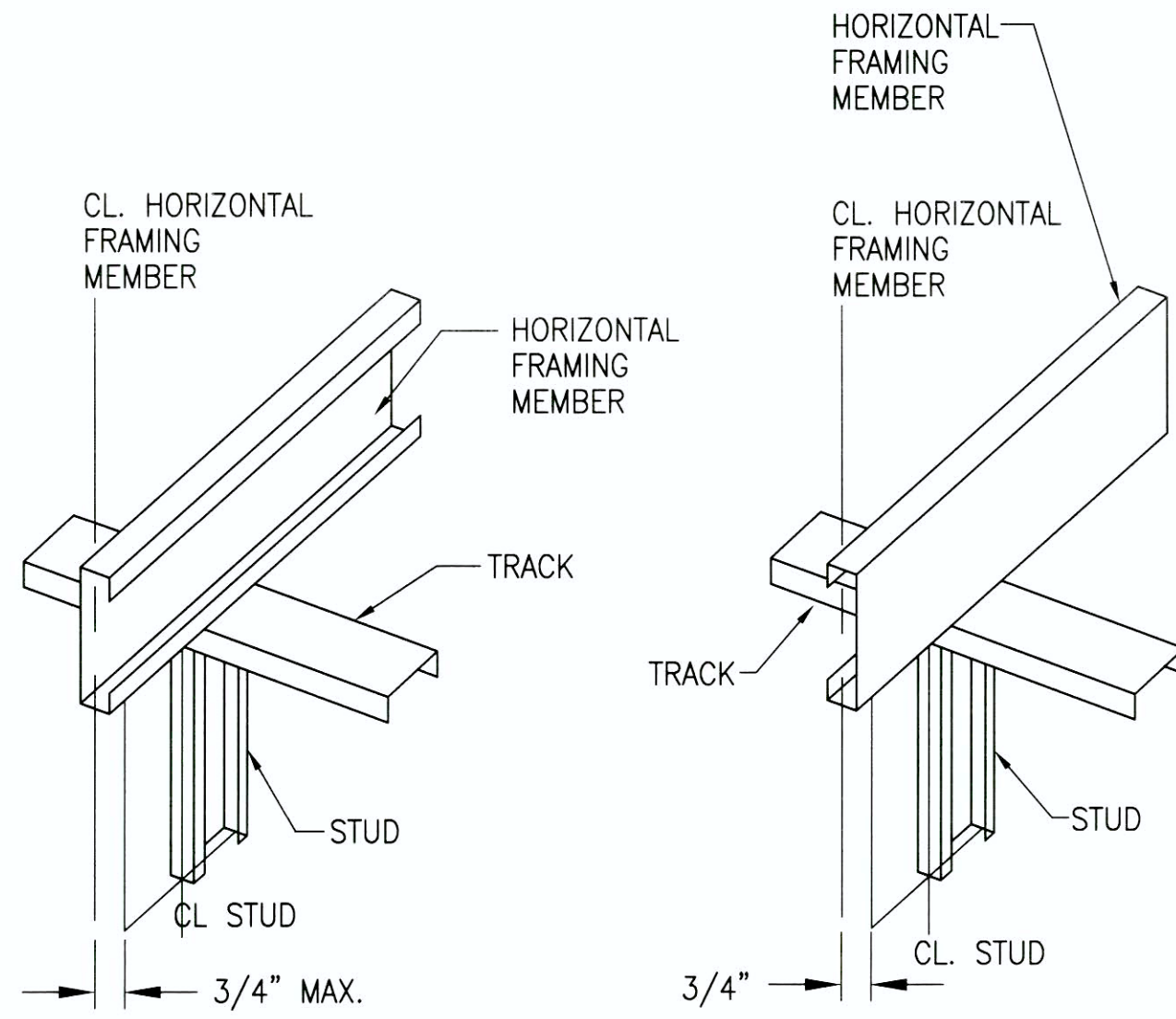
WALL INTERSECTION FRAMING

13 BEARING STUD SCHEDULES

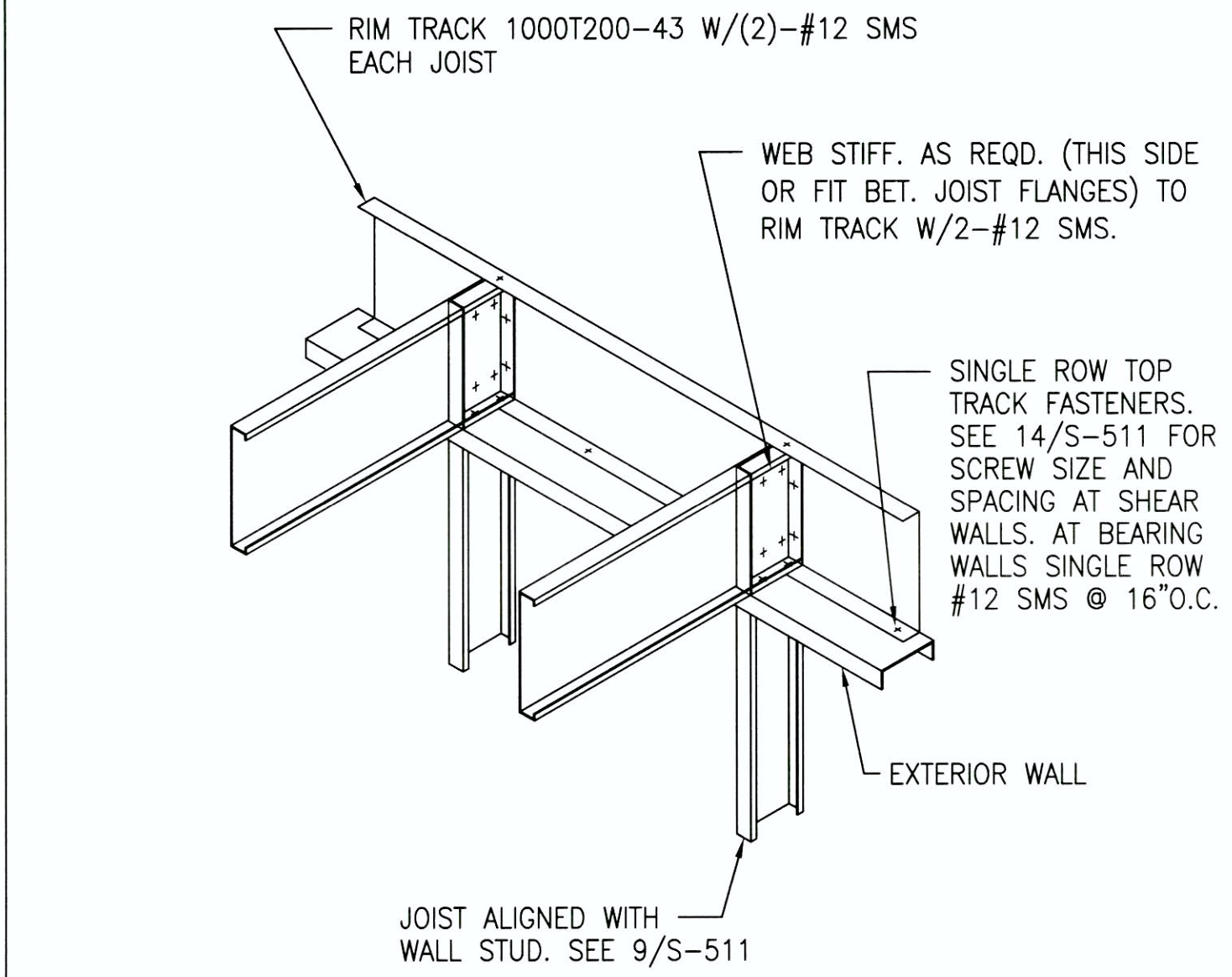
10 BEARING WALL FRAMING

SHEAR WALL SCHEDULE						
WALL MARK	SHEATHING	MIN. STUD THICKNESS (MILS)	EDGE SCREW SPACING	BOTTOM TRACK FASTENERS	TOP TRACK FASTENERS	REMARKS
W1	15/32" STRUCTURAL I SHEATHING ONE SIDE 4 PLY	43	#8 S.M.S. @ 2" O.C.	DBL. ROW #12 @ 12" O.C. OR SINGLE ROW #12 @ 6" O.C. OR 1/2" KB-TZ W/ 3 1/2" EMBED @ 6" O.C.	#12 @ 2" O.C. SINGLE ROW OR #12 @ 4" O.C. DOUBLE ROW	
W2	15/32" STRUCTURAL I SHEATHING ONE SIDE 4 PLY	43	#8 S.M.S. @ 4" O.C.	DBL. ROW #12 @ 6" O.C. OR SINGLE ROW #12 @ 3" O.C. OR 1/2" KB-TZ W/ 3 1/2" EMBED @ 3" O.C.	#12 @ 3" O.C. SINGLE ROW OR #12 @ 6" O.C. DOUBLE ROW	

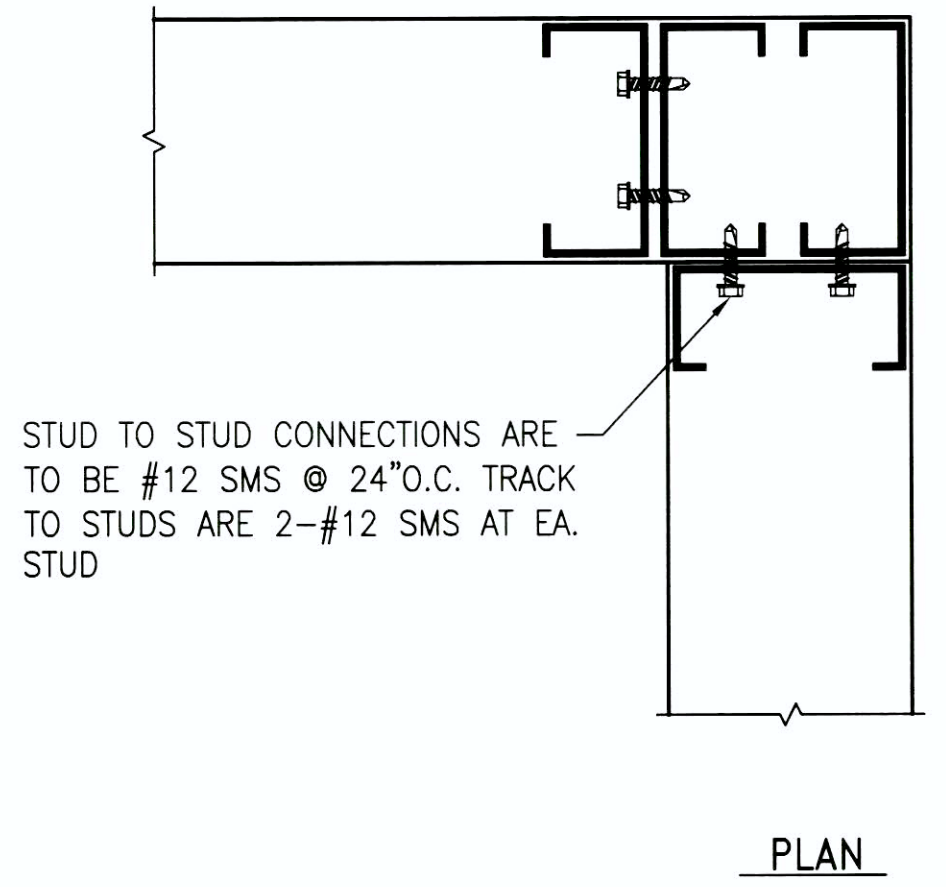
- NOTES:
- WOOD STRUCTURAL PANELS SHALL COMPLY WITH DOC PS1 OR PS2.
  - TOP AND BOTTOM TRACKS SHALL MATCH STUD THICKNESS AND SHALL HAVE MINIMUM 1 1/2" LEGS.
  - BLOCK ALL PANEL EDGES. BLOCKING SHALL MATCH STUD SIZE AND THICKNESS.
  - SEE PLAN AND METAL STUD WALL SCHEDULE FOR STUD SIZE AND THICKNESS REQUIREMENTS FOR BEARING WALLS. THICKNESS IDENTIFIED IN SHEAR WALL SCHED. SHALL BE CONSIDERED A MINIMUM. WHERE NECESSARY, THICKNESS SHALL BE INCREASED TO MATCH BEARING WALL REQUIREMENTS.
  - SCREWS SHALL BE SELF-DRILLING/SELF-TAPPING BUGLE HEAD.
  - SEE DET. 15/S-511 FOR SHEAR WALL ELEVATION.
  - USE HOLDOWN INDICATED ON PLAN. SEE DETAIL 15/S-513 FOR MORE INFORMATION.
  - FOR BOTTOM TRACK FASTENERS, EXPANSION ANCHORS PER SCHEDULE REQUIRED AT CONNECTION TO CONCRETE. SMS REQUIRED AT ALL OTHER LOCATIONS.
  - FOR TOP AND BOTTOM TRACK FASTENERS, DOUBLE ROW OF SCREWS REQUIRED AT INTERIOR WALL, SEE 4/S-511. SINGLE ROW OF SCREWS REQUIRED AT ENDWALL, SEE 5/S-511.



IN-LINE FRAMING AT JOIST PERPENDICULAR TO WALL



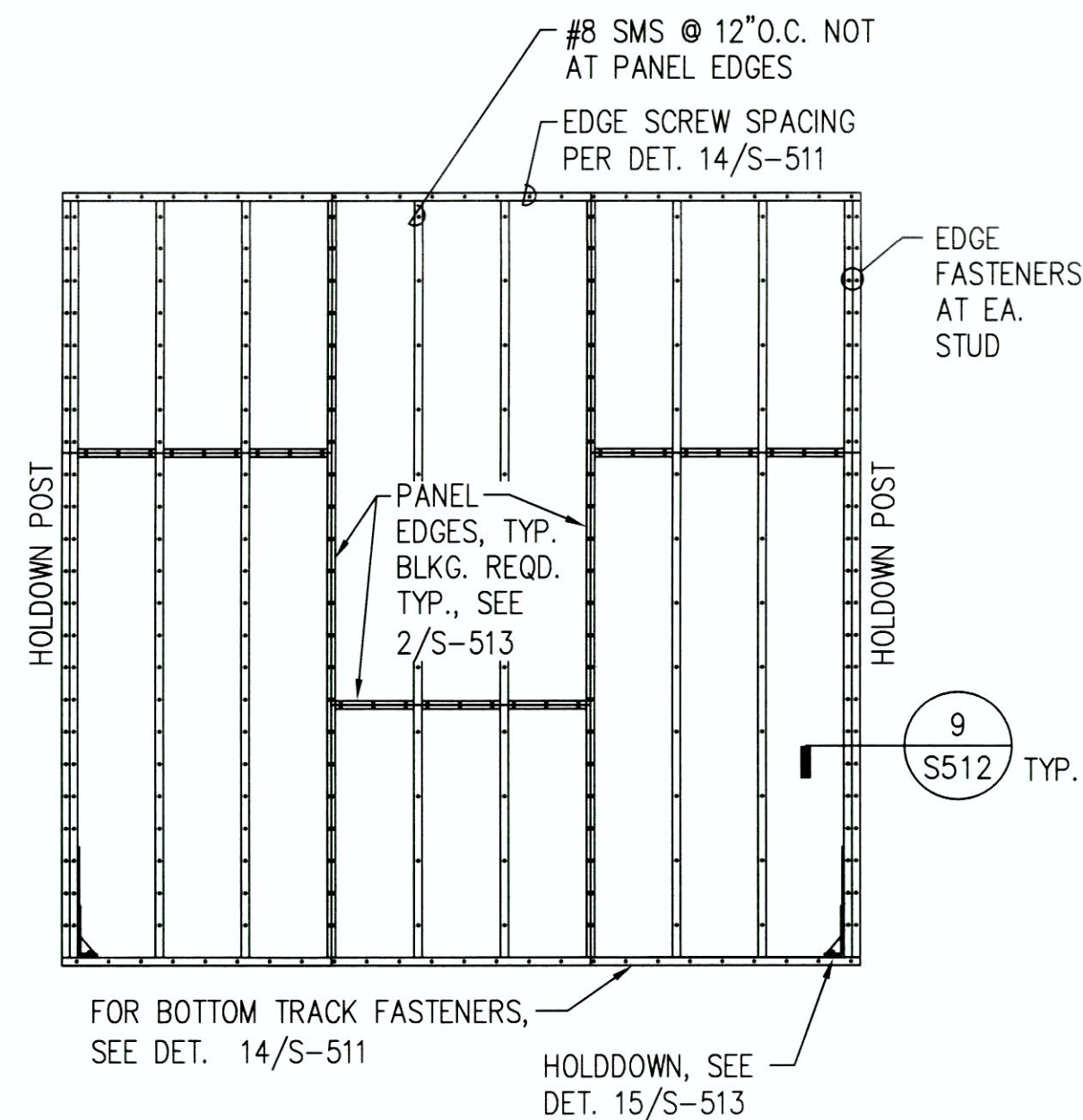
JOIST AT ENDWALL



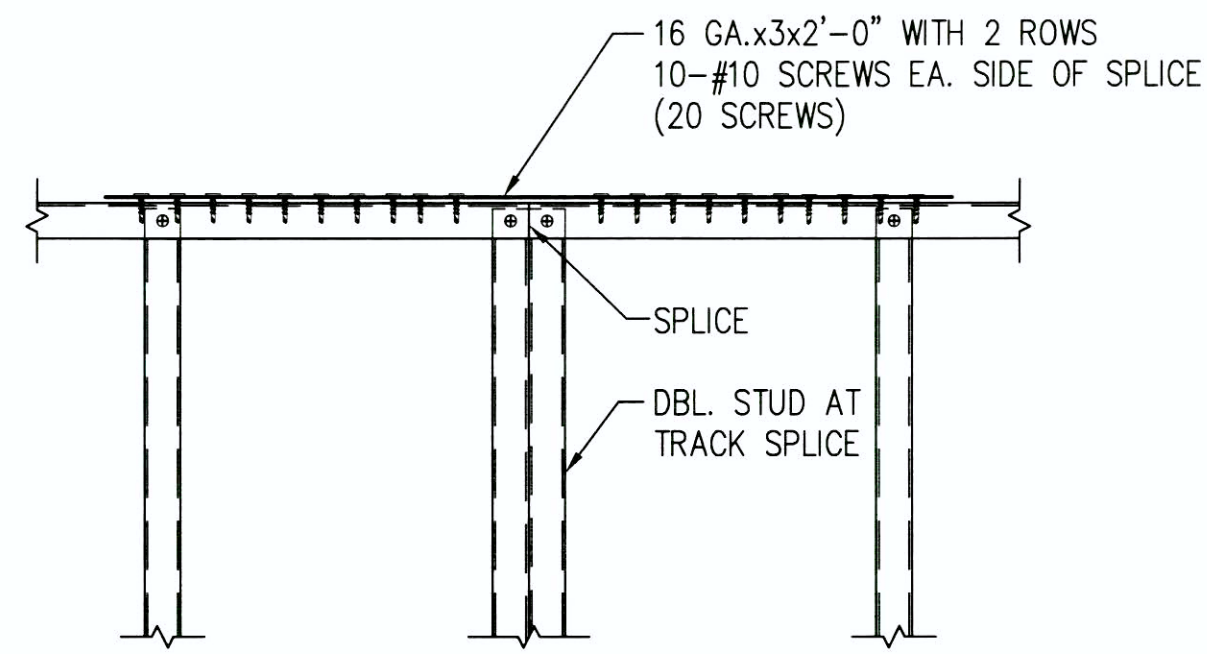
WALL CORNER FRAMING

14 SHEAR WALL SCHEDULE

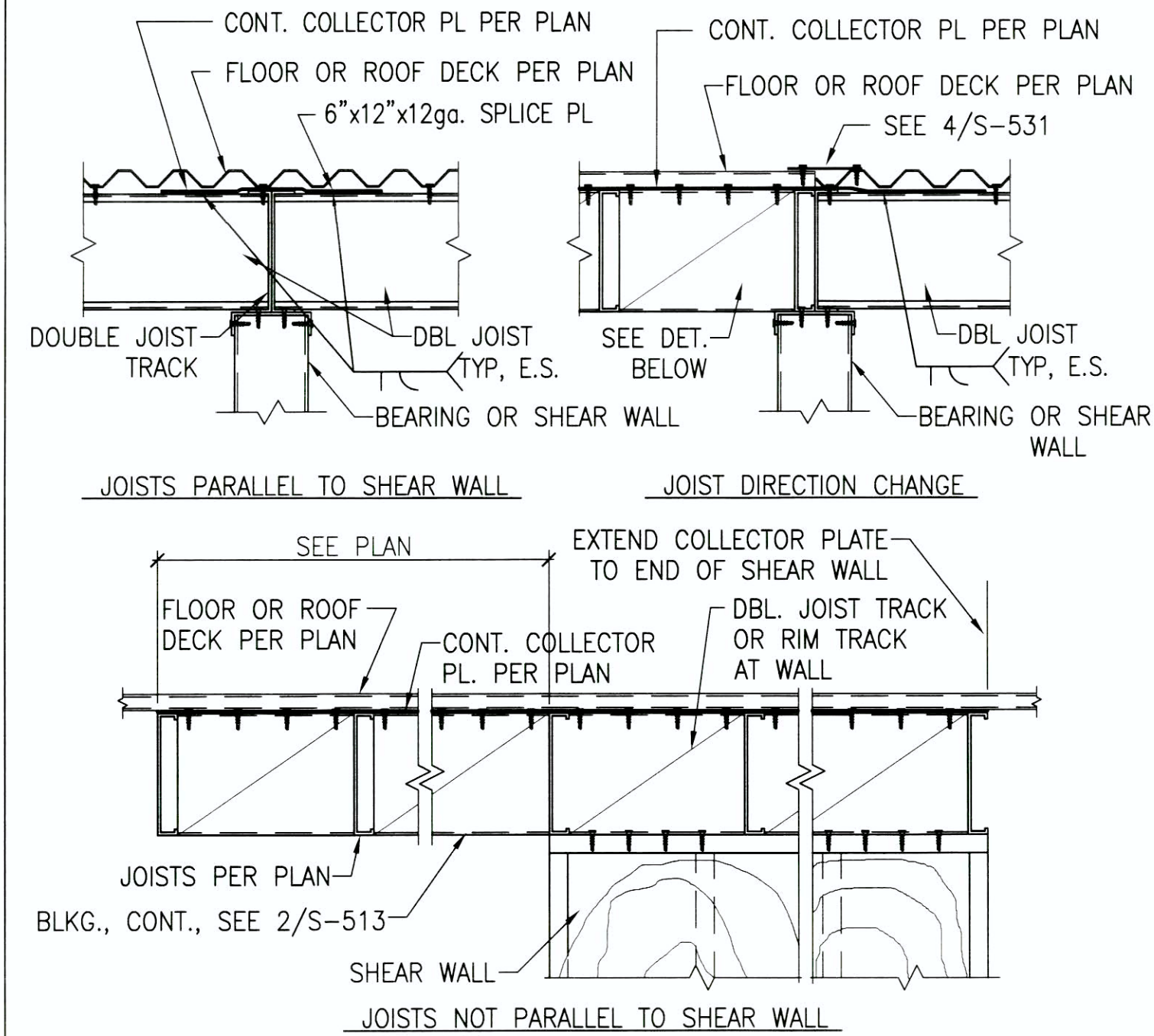
12 TOP TRACK SPLICE



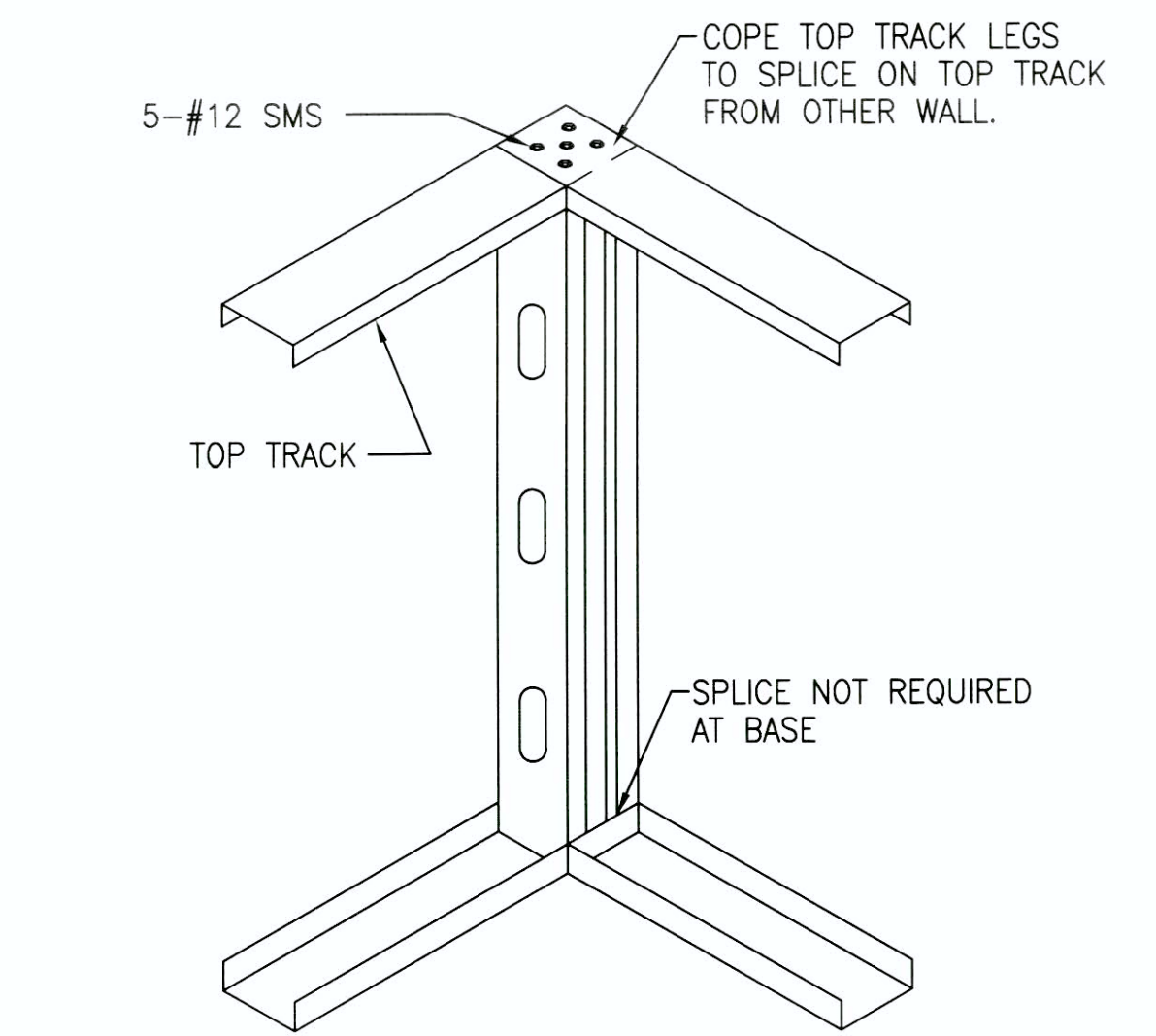
15 SHEAR WALL ELEVATION



12 TOP TRACK SPLICE



COLLECTOR DETAILS



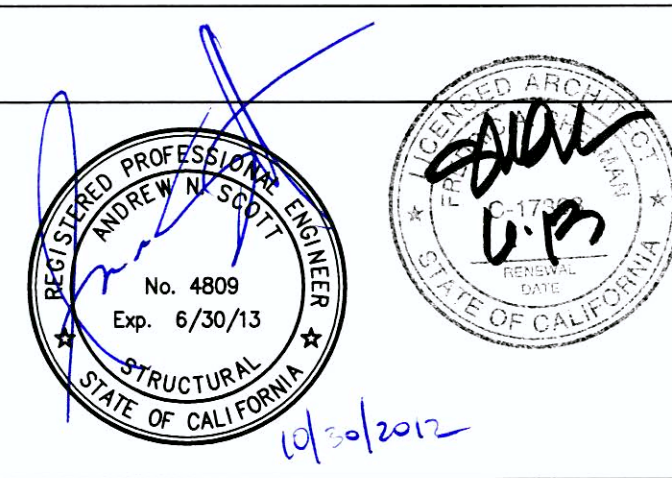
WALL CORNER TRACK FRAMING

BACKCHECK #1	3/25/11
100% CONSTRUCTION DOCUMENTS	9/10/08
95% CONSTRUCTION DOCUMENTS	8/8/08
Revisions:	Date

CONSULTANTS:	
STRUCTURAL:	DEGENKOLB ENGINEERS, 235 MONTGOMERY STREET, SUITE 500, SAN FRANCISCO, CA 94104
MECHANICAL:	HTC ENGINEERS, 1529 CYPRESS ST., SUITE 103, WALNUT CREEK, CA 94596
ELECTRICAL:	BAY AREA CONSULTING ENGINEERS, INC., 96 SUITE C SPRINGTOWN CENTER, VALLEJO, CA 94590
CIVIL ENGINEER:	WINZLER & KELLY, 417 MONTGOMERY ST., SUITE 700, SAN FRANCISCO, CA 94104
ESTIMATING:	CUMMING CORPORATION, 1970 BROADWAY, SUITE 630, OAKLAND, CA 94612
SURVEYORS:	MARTIN M. RON ASSOCIATES, INC., 859 HARRISON ST., SUITE 200, SAN FRANCISCO, CA 94107
UTILITY LOCATORS:	CRUZ BROTHERS LOCATORS, P.O. BOX 66768, SCOTTS VALLEY, CA 95067

ARCHITECT/ENGINEERS:

Architecture | Engineering | Planning  
Hammel, Green and Abrahamson, Inc.  
445 Bush Street - Fourth Floor  
San Francisco, California USA 94108  
Telephone 415.962.2592  
Facsimile 415.962.2598



Drawing Title  
**TYPICAL LIGHT GAGE STEEL DETAILS**  
Scale: **AS NOTED**  
Approved: Project Director

Project Title  
**VA Medical Center  
Seismic Replacement And  
Retrofit**  
Location  
**San Francisco, CA**  
Date  
**10 / 22 / 2012**

Project Number  
**2941-001-00**  
Building Number  
**22**  
Drawing Number  
**S-511**

Office of  
Facilities  
Management  
Department of  
Veterans Affairs