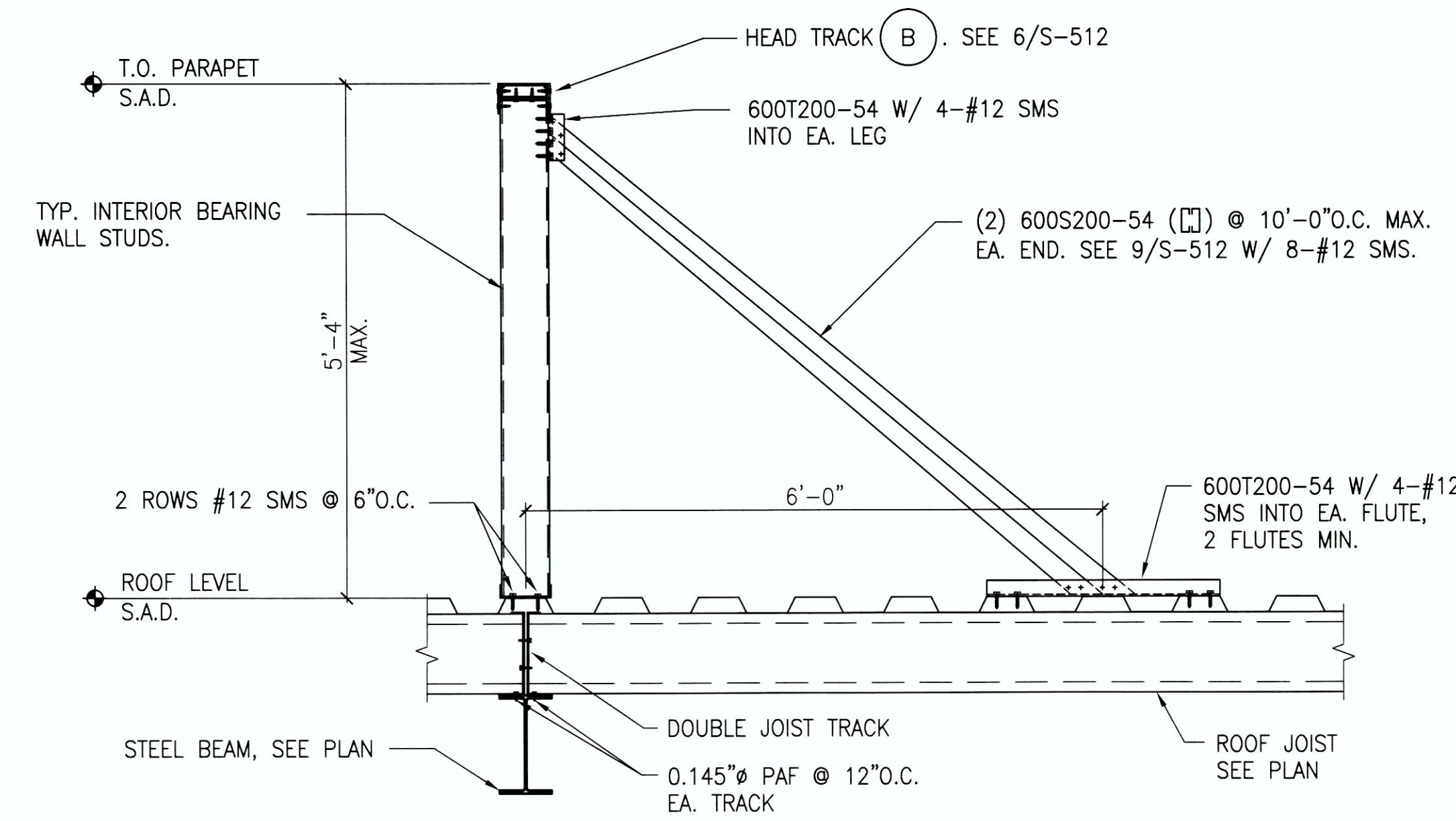
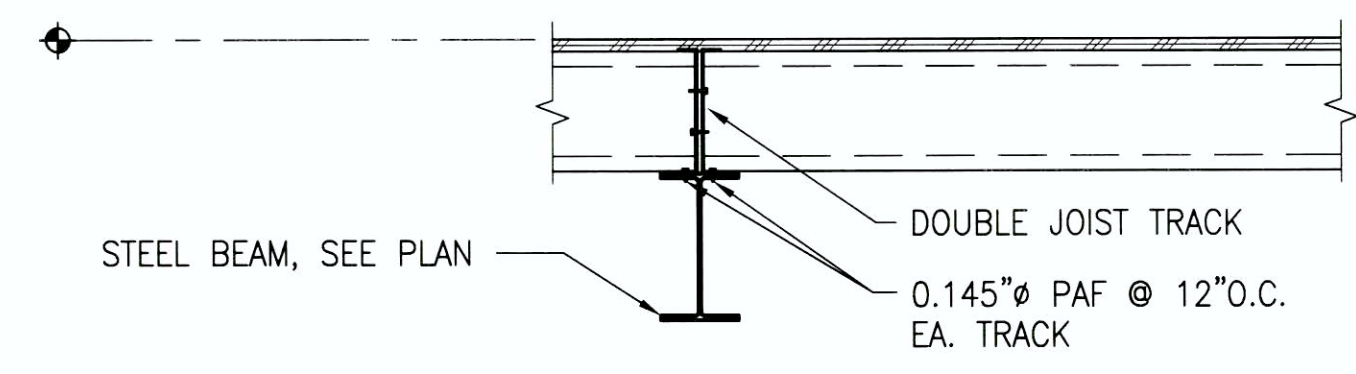


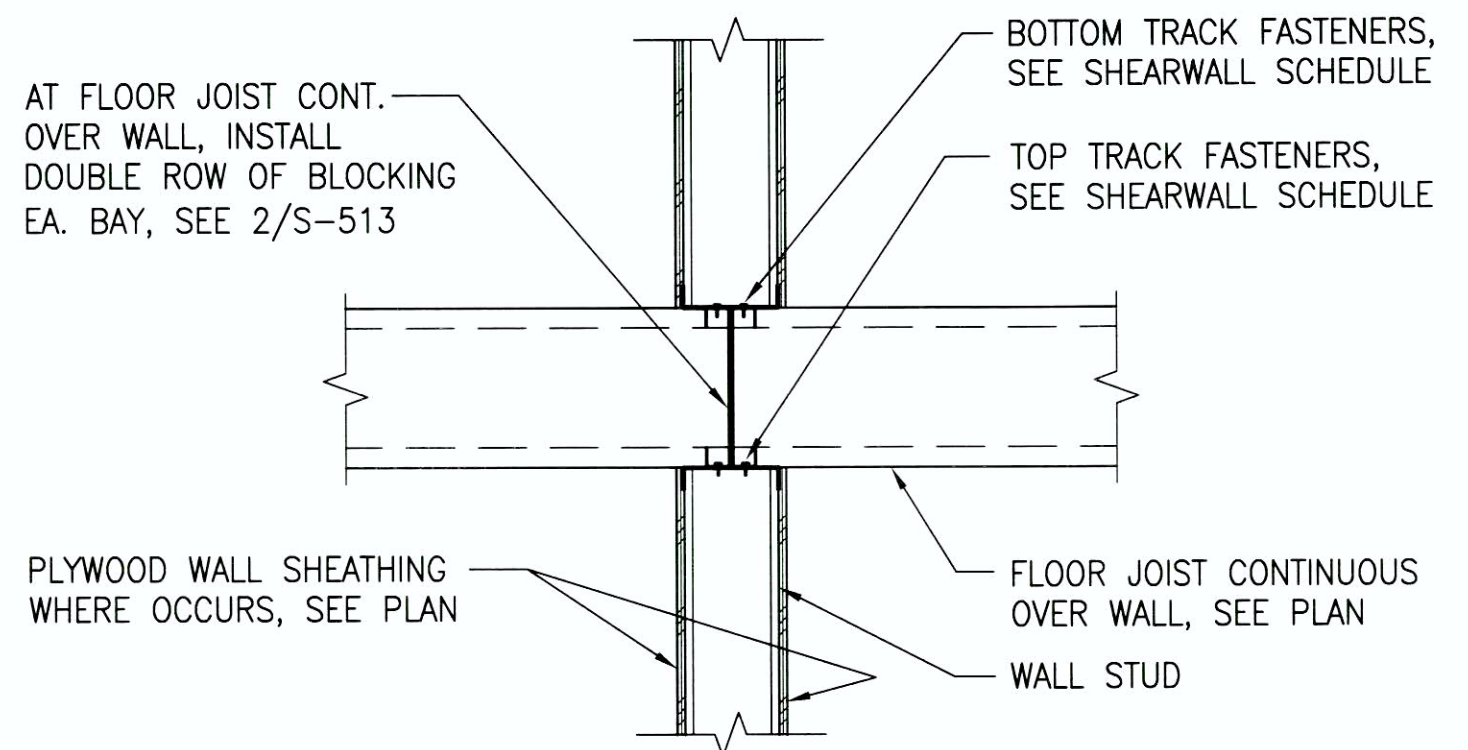
7 COLLECTOR AT HSS COL.  
3/4" = 1'-0"



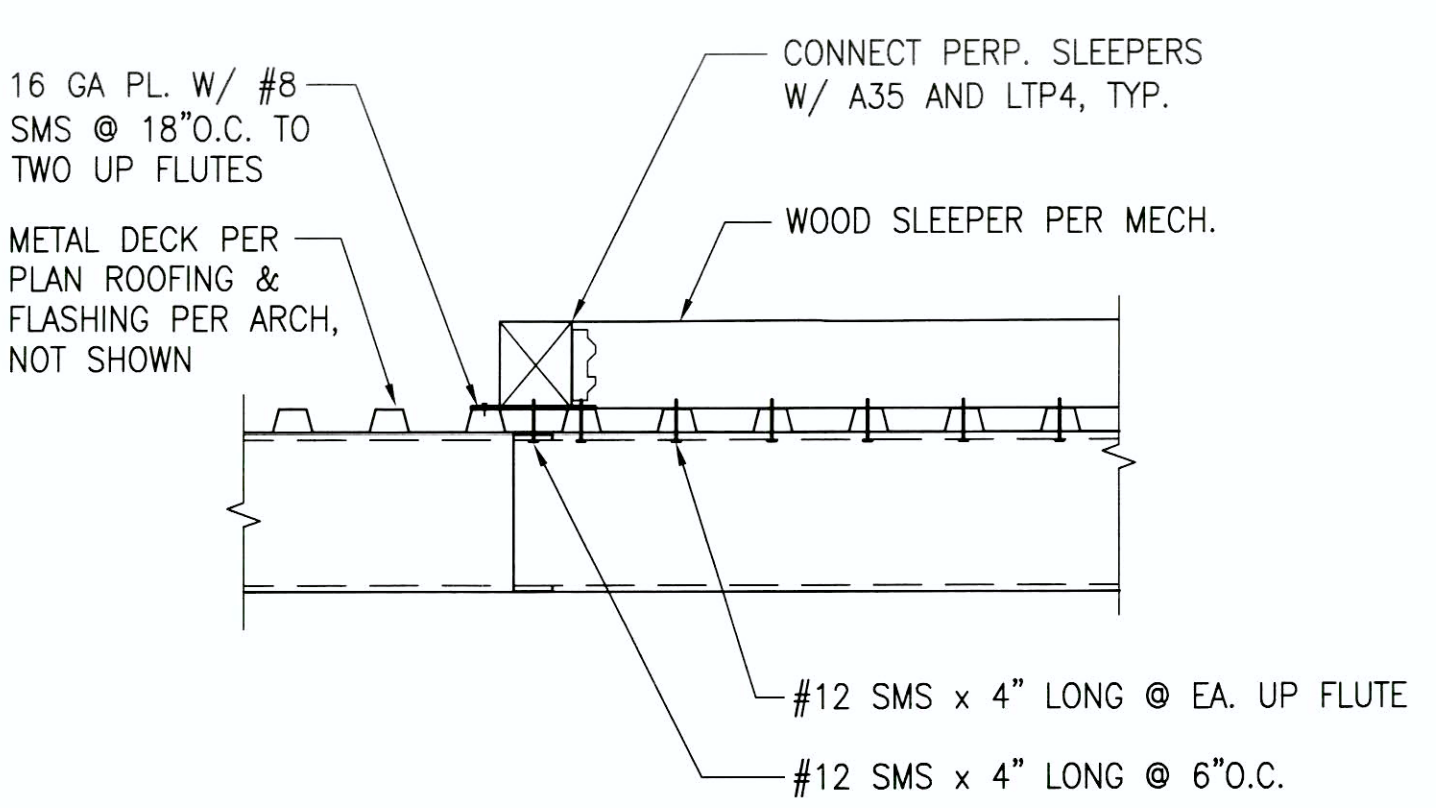
4 INTERIOR PARAPET  
3/4" = 1'-0"



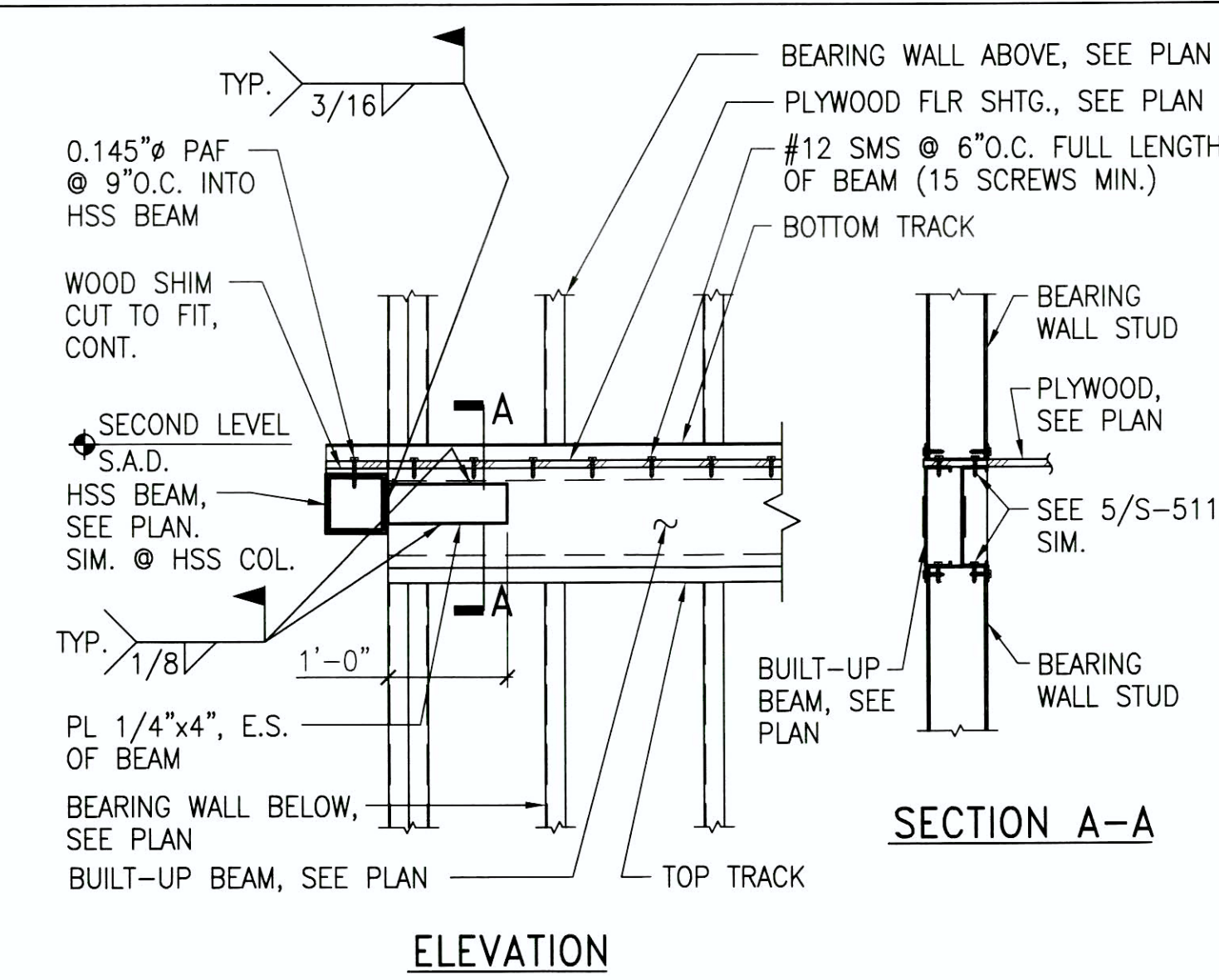
5 JOIST TO STL BM CONN.  
3/4" = 1'-0"



2 JOIST CONTINUOUS OVER WALL  
1" = 1'-0"



6 TYP. SLEEPER/CURB ATTACHEMENT  
1" = 1'-0"



3 ELEVATOR FRAMING BRACE CONN.  
3/4" = 1'-0"

BACKCHECK #1	3/25/11
100% CONSTRUCTION DOCUMENTS	9/10/08
95% CONSTRUCTION DOCUMENTS	8/8/08
Revisions:	Date

<b>CONSULTANTS:</b>	
STRUCTURAL:	DEGENKOLB ENGINEERS, 235 MONGOMERY STREET., SUITE 500; SAN FRANCISCO, CA 94104
MECHANICAL:	HTC ENGINEERS, 1529 CYPRESS ST., SUITE 103; WALNUT CREEK, CA 94596
ELECTRICAL:	BAY AREA CONSULTING ENGINEERS, INC., 96 SUITE C SPRINGTOWNE CENTER, VALLEJO, CA 94590
CIVIL ENGINEER:	WINZLER & KELLY, 417 MONTGOMERY ST., SUITE 700; SAN FRANCISCO, CA 94104
ESTIMATING:	CUMMING CORPORATION, 1970 BROADWAY, SUITE 630; OAKLAND, CA 94612
SURVEYORS:	MARTIN M. RON ASSOCIATES, INC., 859 HARRISON ST., SUITE 200; SAN FRANCISCO, CA 94107
UTILITY LOCATORS:	CRUZ BROTHERS LOCATORS, P.O. BOX 66768; SCOTTS VALLEY, CA 95067

**ARCHITECT/ENGINEERS:**

**HGA** Architecture | Engineering | Planning  
Hammel, Green and Abrahamson, Inc.  
445 Bush Street - Fourth Floor  
San Francisco, California USA 94108  
Telephone 415.962.2592  
Facsimile 415.962.2598

**Professional Engineer Seal:**  
No. 4809  
Exp. 6/30/13  
Structural  
State of California

**Professional Engineer Seal:**  
No. 4809  
Exp. 6/30/13  
Structural  
State of California

Drawing Title  
**TYPICAL LIGHT GAGE STEEL DETAILS**  
Scale: **AS NOTED**  
Approved: Project Director

Project Title  
**VA Medical Center  
Seismic Replacement And  
Retrofit**  
Location  
**San Francisco, CA**  
Date  
**10 / 22 / 2012**  
Checked  
  
Drawn

Project Number  
**2941-001-00**  
Building Number  
**22**  
Drawing Number  
**S-514**

**Office of  
Facilities  
Management**  
Department of  
Veterans Affairs