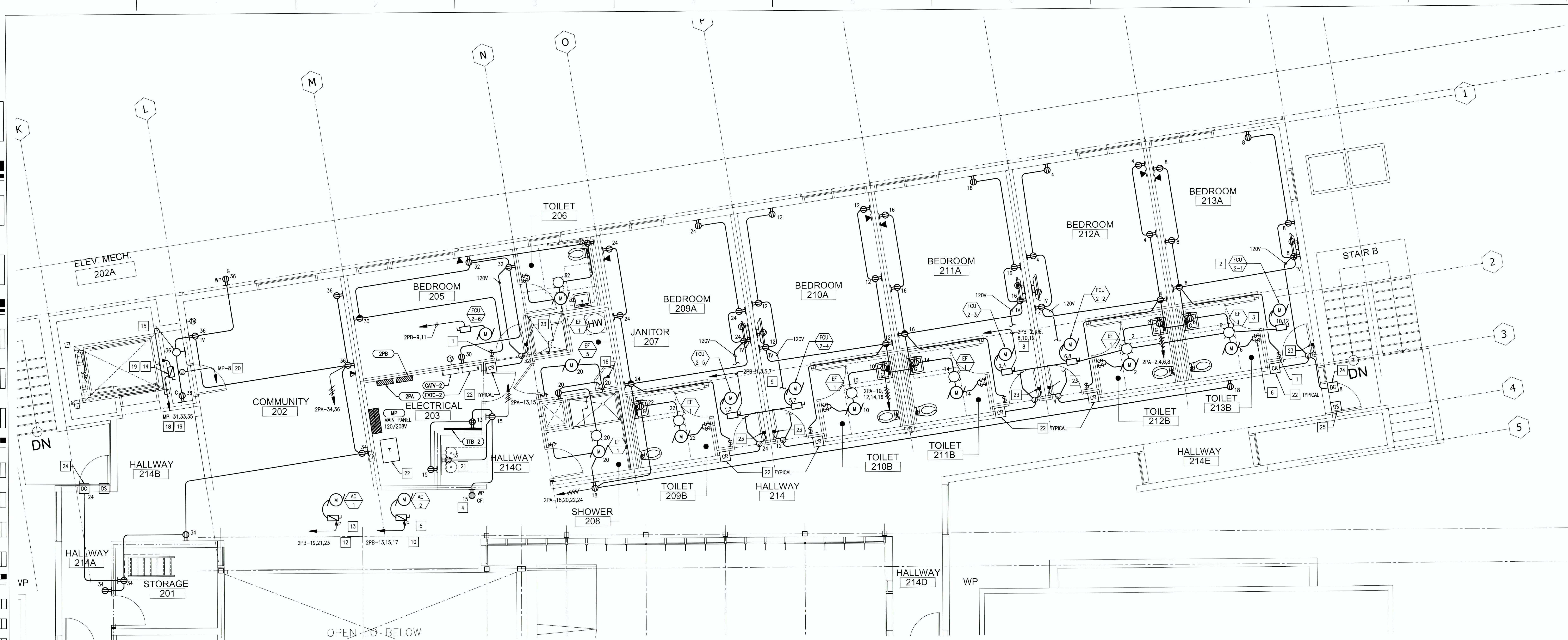


one thirty second inch = one foot
one sixteenth inch = one foot



PART PLAN - ELECTRICAL ROOM

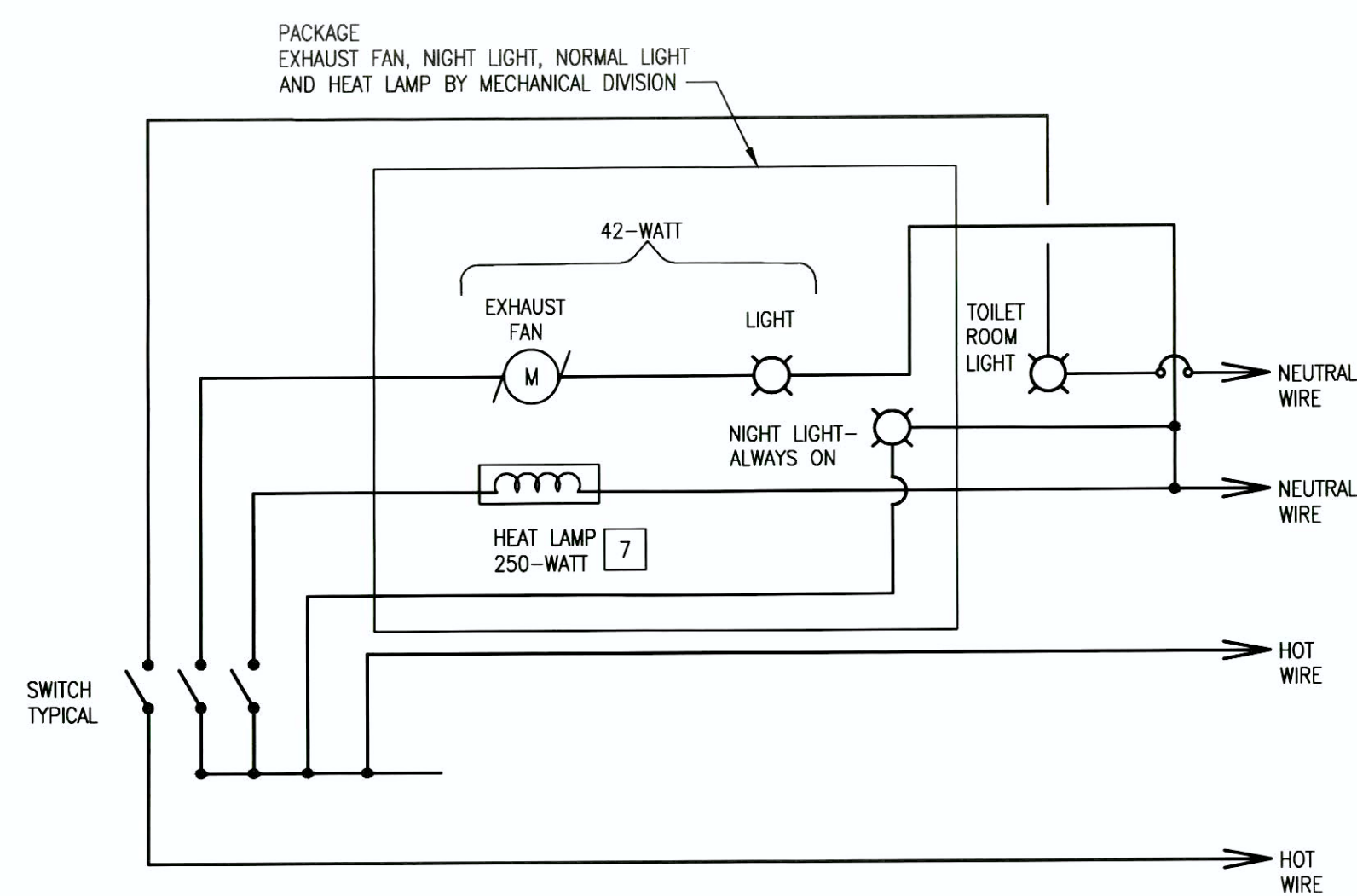
2
E401 SCALE: 1/2"=1'-0"

CONSULTANTS:

STRUCTURAL: DEGENKOLB ENGINEERS; 335 MONTGOMERY STREET, SUITE 500; SAN FRANCISCO, CA 94104
MECHANICAL: HTC ENGINEERS; 1529 CYPRESS ST., SUITE 103; WALNUT CREEK, CA 94596
ELECTRICAL: BAY AREA CONSULTING ENGINEERS; 311 CALIFORNIA STREET, SUITE 720; SAN FRANCISCO, CA 94104
CIVIL ENGINEER: GHD CIVIL ENGINEERS; 2235 MERCURY WAY, SUITE 150; SANTA ROSA, CA 95407
ESTIMATING: CUMMING CORPORATION; 1970 BROADWAY, SUITE 630; OAKLAND, CA 94612
SURVEYORS: MARTIN M. RON ASSOCIATES, INC.; 859 HARRISON ST., SUITE 200; SAN FRANCISCO, CA 94107
UTILITY LOCATORS: CRUZ BROTHERS LOCATORS; P.O. BOX 66768; SCOTTS VALLEY, CA 95067

BUILDING 22 - BEDROOM TOILET EXHAUST FAN AND LIGHT DIAGRAM

3
E401 SCALE: NONE



- 17 DISPOSER, 120V V.
- 18 3/1, 1/16-1 1/2".
- 19 PRIOR TO ROUGH-IN VERIFY RATING OF ACTUAL ELEVATOR TO BE INSTALLED AND PROVIDE CODE-SIZE BRANCH WIRING, FUSIBLE DISCONNECT, AND FEEDER BREAKER SIZE.
- 20 FOR ELEVATOR LIGHTS, ETC. 120-VOLT. PROVIDE TOGGLE DISCONNECT SWITCH.
- 21 WATER COOLER, 460 WATTS, 120V.
- 22 REFER TO E501 ONE LINE DIAGRAM FOR SCOPE OF WORK. FLOOR MOUNTED.
- 23 CONNECT TO ELECTRIC DOOR STRIKE.
- 24 DOOR PROP ALARM SEE DETAIL 4 E400.
- 25 SEE RISER DIAGRAM ON E502 DETAIL 6.

GENERAL NOTES

- G1 FURNISH AND INSTALL MOLDABLE PUTTY PADS SIMILAR TO HILTI OR EQUAL TO THE BACKS AND SIDES OF ALL WALL AND CEILING RECESSED OUTLET BOXES.
- G2 COORDINATE LOCATION AND MOUNTING HEIGHT OF TV OUTLETS AND DUPLEX RECEPTACLES WITH LOCATION OF TV MONITORS.
- G3 OFFSET BACK TO BACK OUTLETS ON SAME WALL BY 12" HORIZONTAL SEPARATION.

SHEET NOTES

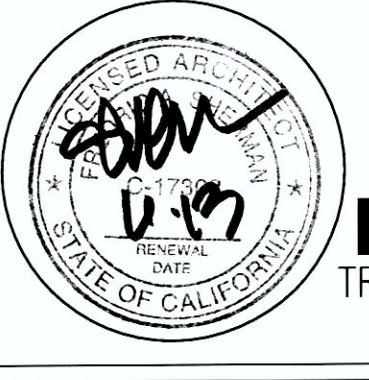
- 1 HALF-SWITCHED RECEPTACLE BY LIGHT SWITCH SHOWN. TYPICAL.
- 2 FAN COIL UNIT: 0.2 AMPERE, 208V, 1-PHASE PROVIDE LOCAL DISCONNECT SWITCH. SWITCH RATING TO MATCH EQUIPMENT IT SERVES. TYPICAL.
- 3 EXHAUST FAN: 1.0 AMPERE, 120V, AND INFRARED HEATER: 250-WATT. TYPICAL.
- 4 ON THE ROOF ADJACENT TO MECHANICAL UNIT AC-2.
- 5 ROOF MOUNTED WEATHERPROOF FUSIBLE DISCONNECT SWITCH WITH 40 AMPERE FUSES, 208 VOLTS, 3-PHASE, AC-2 MCA-29.5 AMPERES.
- 6 TWO SWITCHES: ONE FOR EXHAUST FAN AND LIGHT AND ANOTHER SWITCH FOR INFRARED LAMP. SEE DETAIL 3 THIS SHEET FOR WIRING DETAILS. TYPICAL.
- 7 PROVIDE 750-WATT "ORANGE" HEAT LAMP.
- 8 6/14, 1/14G-3/4". EACH FCU UNIT IS FED WITH 2/14 PLUS GROUND. TYPICAL.
- 9 4/14, 1/14G-3/4". EACH FCU UNIT IS FED WITH 2/14 PLUS GROUND. TYPICAL.
- 10 3/8, 1/10G-1".
- 11 2/16, 1/10G-1" TO FNL 2PA-39.41 FOR COOKTOP. PROVIDE 50A, 250V, 2-POLE, 3-WIRE GROUNDING RECEPTACLE. PRIOR TO ROUGH-IN VERIFY RATING OF APPLIANCE TO BE INSTALLED AND PROVIDE CODE-SIZE BRANCH WIRING AND RECEPTACLE.
- 12 3/8, 1/10G-1".
- 13 SIMILAR TO NOTE 5 BUT 50 AMPERE FUSES.
- 14 CONNECT TO ELEVATOR, 200 A DISCONNECT WITH 150 AMPERE FUSES.
- 15 PORCELAIN KEYLESS LAMP HOLDER WITH 18-WATT COMPACT FLUORESCENT LAMP AND PULL SWITCH.
- 16 CIRCULATING PUMP OF HOT WATER, HEATER, 120 VOLT. PROVIDE TOGGLE DISCONNECT SWITCH.

Revisions:	Date



ARCHITECT/ENGINEERS:

Architecture | Engineering | Planning
Hammel, Green and Abrahamson, Inc.
445 Bush Street - Fourth Floor
San Francisco, California USA 94108
Telephone 415.962.2592
Facsimile 415.962.2598



Drawing Title
**ELECTRICAL - SECOND FLOOR
PLAN POWER & COMMUNICATIONS**

Scale
1/4" = 1'-0"

Approved: Project Director

Project Title
**VA Medical Center
Seismic Replacement And
Retrofit**

Location
San Francisco, CA

Date
10 / 22 / 2012

Checked
AEM

Drawn
BAC

Project Number
2941-001-00

Building Number
22

Drawing Number
E401

**Office of
Facilities
Management**
Department of
Veterans Affairs