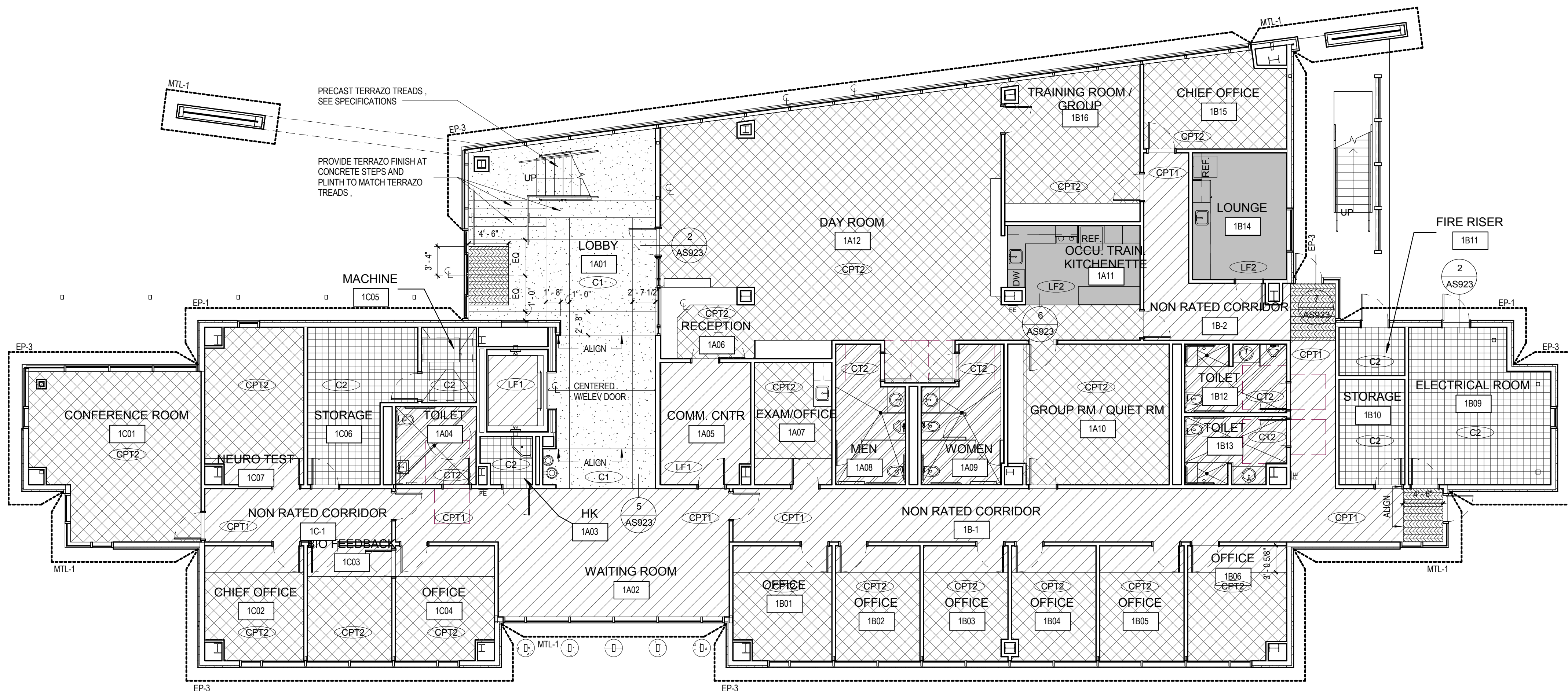
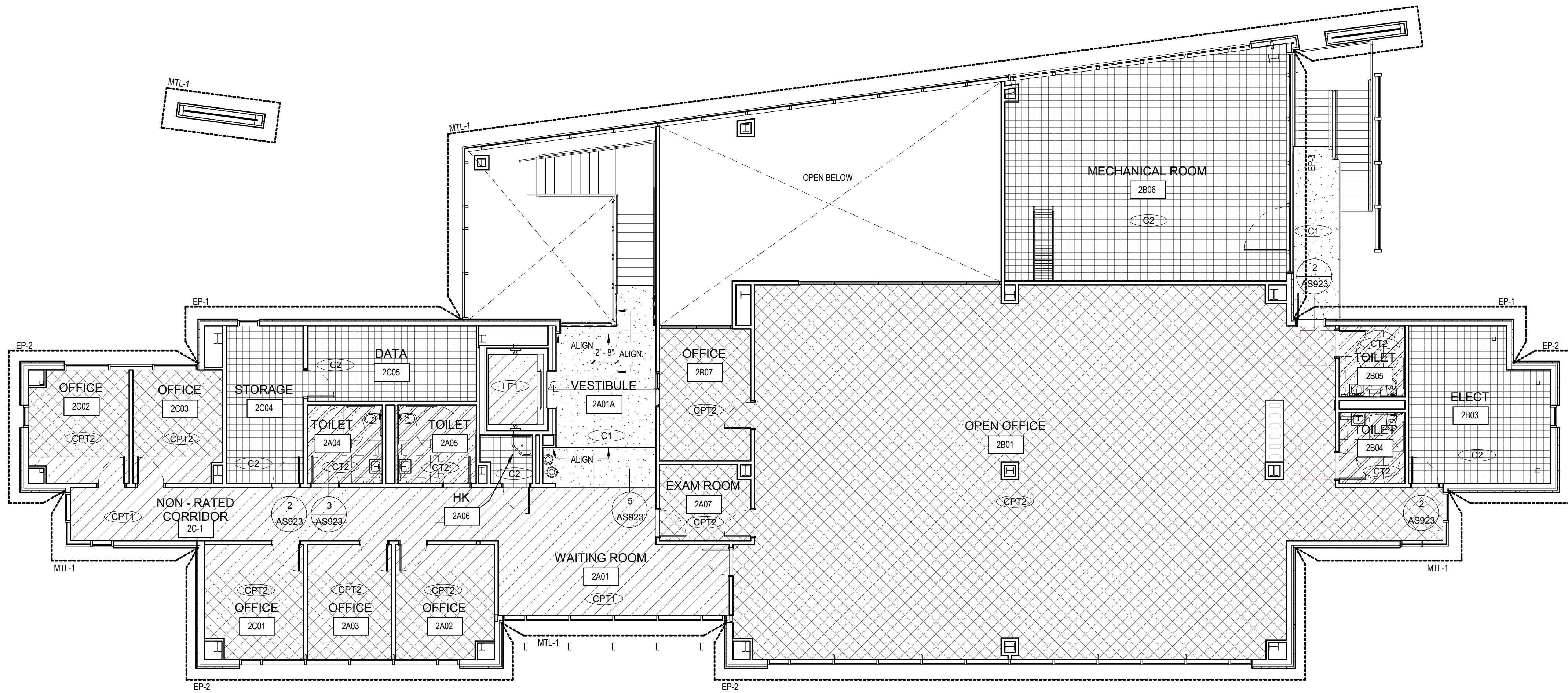


three inches = one foot
one and one half inches = one foot
one inch = one foot
three quarters inch = one foot
one half inch = one foot
three eighths inch = one foot
one quarter inch = one foot
one eighth inch = one foot
one sixteenth inch = one foot



1 FIRST FLOOR FINISH PLAN
1/8" = 1'-0"



2 SECOND FLOOR FINISH PLAN
1/8" = 1'-0"

FLOOR FINISH LEGEND

ID.	FINISH	APPROXIMATE SQUARE FOOTAGE IN PROJECT AS FLOORING
C1		965 SQ. FT.
C2		2,074 SQ. FT.
CPT1		2,540 SQ. FT.
CPT2		6,779 SQ. FT.
LF1		143 SQ. FT.
LF2		286 SQ. FT.
CT2		764 SQ. FT.
Walk-off Mats		90 SQ. FT.

CARPET AND VCT1 REMOVED PER ALT #4, TO BE REPLACED WITH
"ALTERNATE - CARPET CPT1" AND "VCT1, 12' x 12' "

EXTERIOR FINISH LEGEND

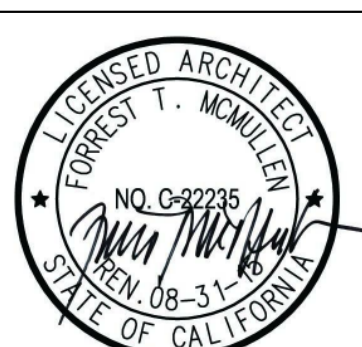
EP-1	MUSTARD YELLOW PLASTIC WALL PANEL SYSTEM, METALLICS, J40 4.3 SATIN, K05.0 D/SILK, REFER TO SPECIFICATIONS. (REPLACE WITH EIFS SYSTEM AT DEDUCT ALT #3, COLOR TO MATCH COLORLIFE, CL 1995D, SQUILL, LRV 37) (REPLACE WITH EXTERIOR CEMENT PLASTER AT DEDUCT ALT #17, PAINT TO MATCH COLORLIFE, CL 1995D, SQUILL, LRV 37)
EP-2	WOOD GRAIN PLASTIC WALL PANEL SYSTEM, MONTREUX SUNGLOW, PLASTIC METEON® NW07, REFER TO SPECIFICATIONS. (REPLACE WITH EIFS SYSTEM AT DEDUCT ALT #3, COLOR TO MATCH COLORLIFE, CL 2696A, CAPPUCCINO, LRV 19) (REPLACE WITH PAINTED EXTERIOR CEMENT PLASTER AT DEDUCT ALT #17, PAINT TO MATCH COLORLIFE, CL 2696A, CAPPUCCINO, LRV 19)
EP-3	EIFS WALL SYSTEM, COLOR TO MATCH COLORLIFE, CL 3165D, ANCHOR, LRV16 (REPLACE WITH PAINTED EXTERIOR CEMENT PLASTER AT DEDUCT ALT #17, PAINT TO MATCH COLORLIFE, CL 3165D, ANCHOR, LRV16)
MTL-1	CENTRIA FORMABOND II COMPOSITE METAL PANELS W/ METAL STUDS AND 1/2" PLYWOOD BEHIND, REFER TO SPECIFICATIONS. (REPLACE WITH EIFS SYSTEM AT DEDUCT ALT #2, COLOR TO MATCH COLORLIFE, CL 3164M, ZEPPELIN, LRV 32) (REPLACE WITH PAINTED EXTERIOR CEMENT PLASTER AT DEDUCT ALT #17, PAINT TO MATCH COLORLIFE, CL 3164M, ZEPPELIN, LRV 32)

CONSULTANTS:

ARCHITECT/ENGINEERS:

HMC Architects

1827 E. Fir Avenue / Studio 103 / Fresno, CA 93720
T 559 322 2444 / www.hmcarchitects.com
HMC PROJECT #1393002-000



Drawing Title
FIRST AND SECOND FLOOR - FLOOR
PATTERN & EXTERIOR FINISHES

Approved: Project Director

Project Title
Mental Health Psychosocial
Rehab Recovery and Health Care
for Homeless Veteran Center

Location
2615 E. CLINTON AVE, FRESNO, CA 93703

Date
08/11/2014

Checked
Checker

Drawn
Author

Project Number
570-217
Building Number
37

Drawing Number
AF201
Dwg. 19 of 197

Office of
Construction
and Facilities
Management:

