

A

B

C

D

E

F

A

B

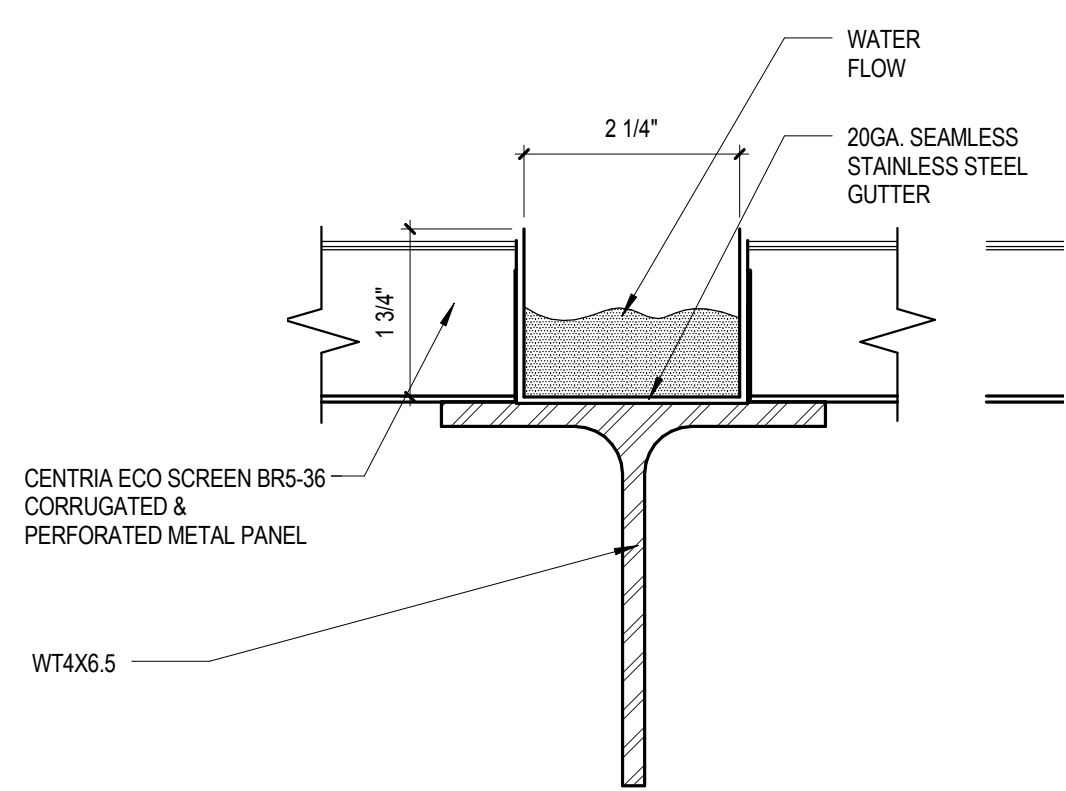
C

D

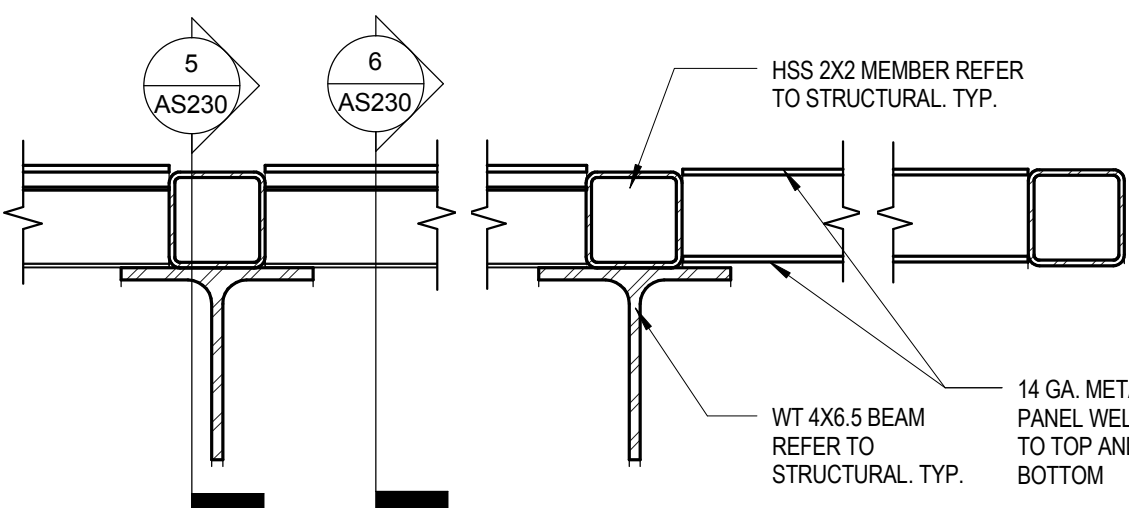
E

F

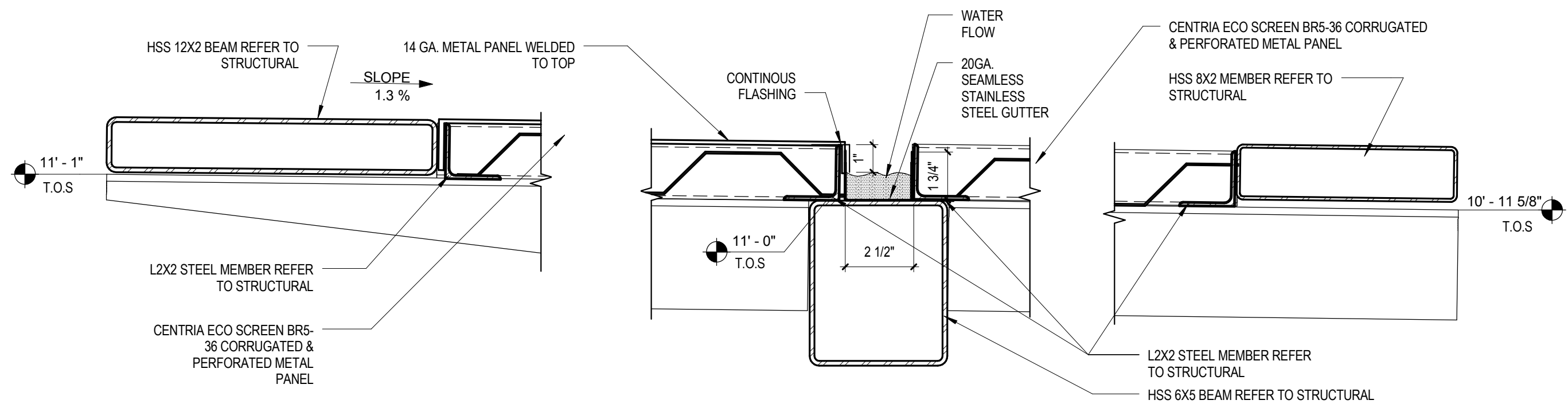
three inches = one foot
one and one half inches = one foot
one inch = one foot
three quarters inch = one foot
one half inch = one foot
one quarter inch = one foot
one eighth inch = one foot
one sixteenth inch = one foot



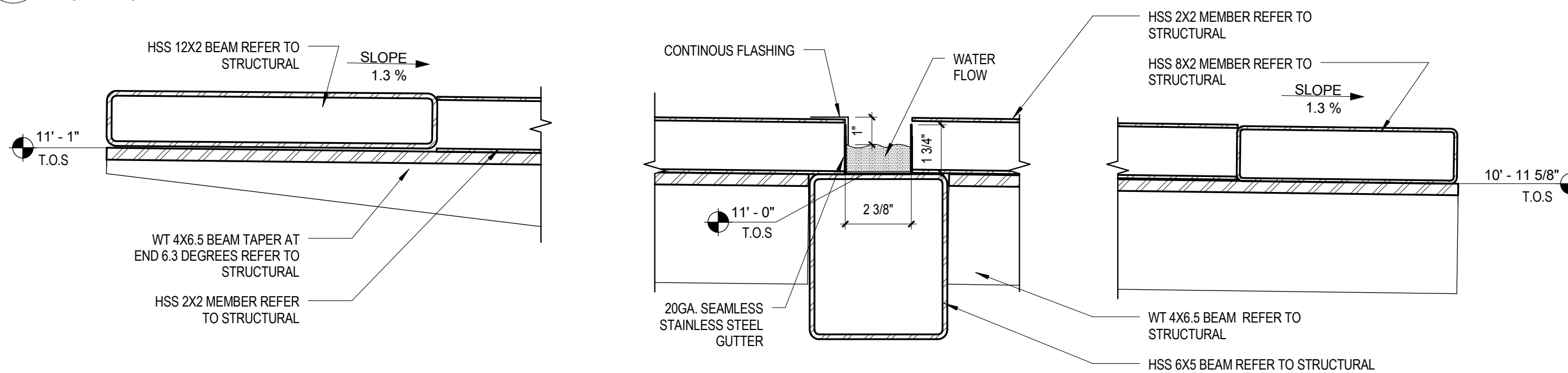
9 TRELLIS - DRAIN AT BEAM
6" = 1'-0"



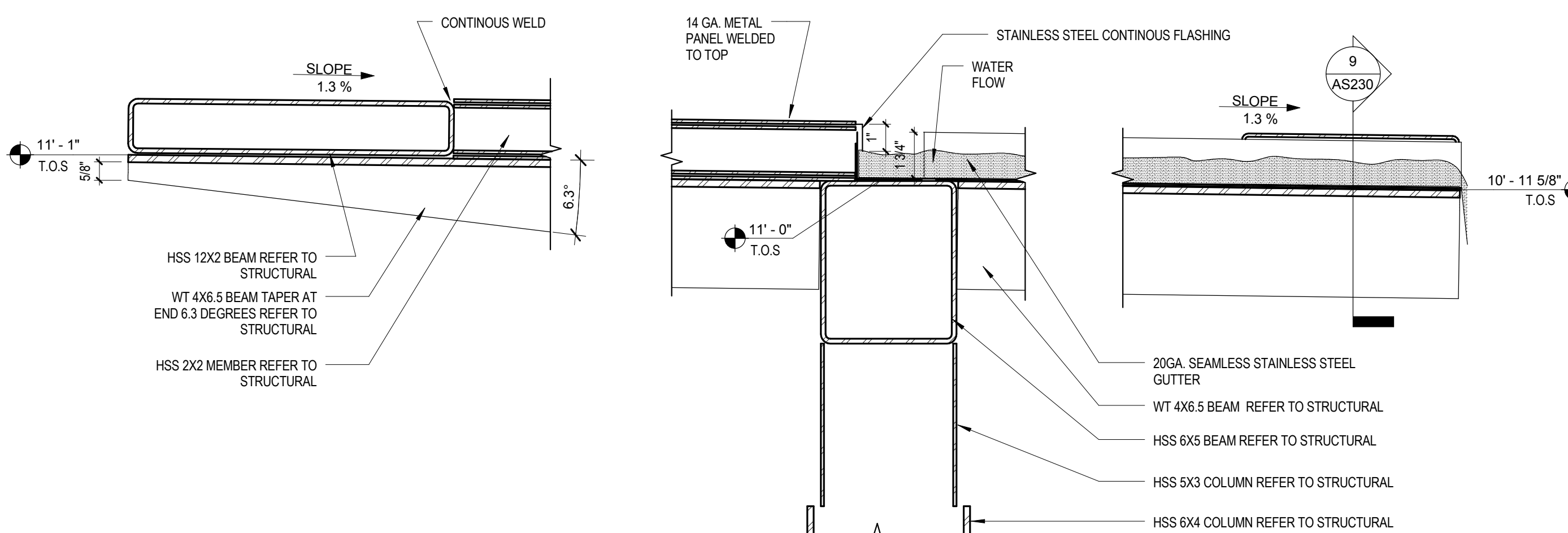
7 TRELLIS - SECTION AT WING
3" = 1'-0"



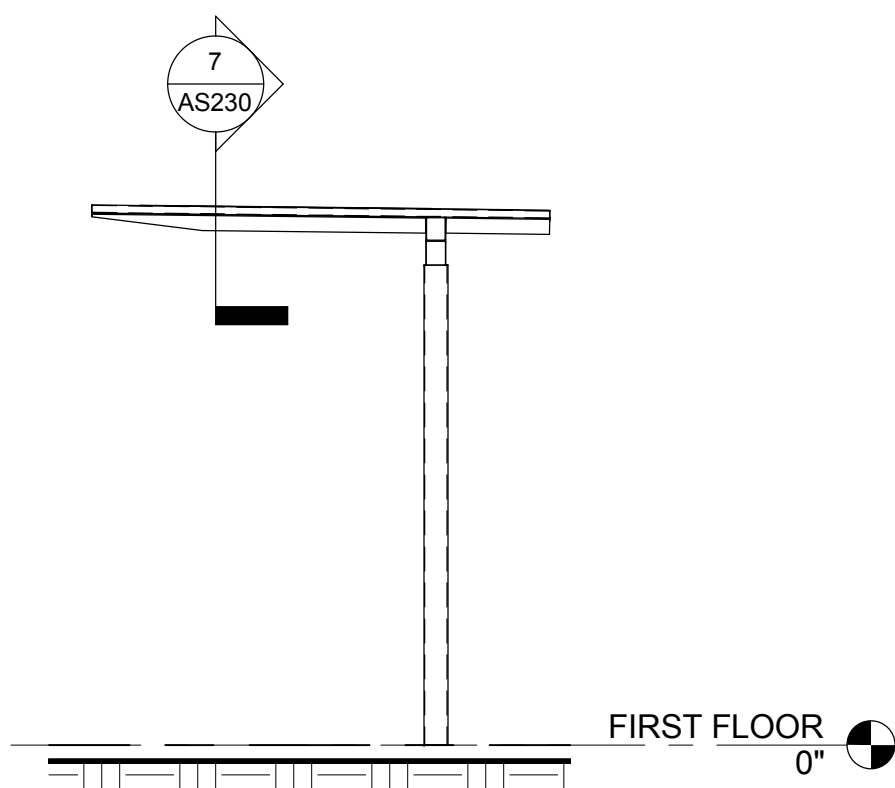
6 TRELLIS - INFILL PANEL
3" = 1'-0"



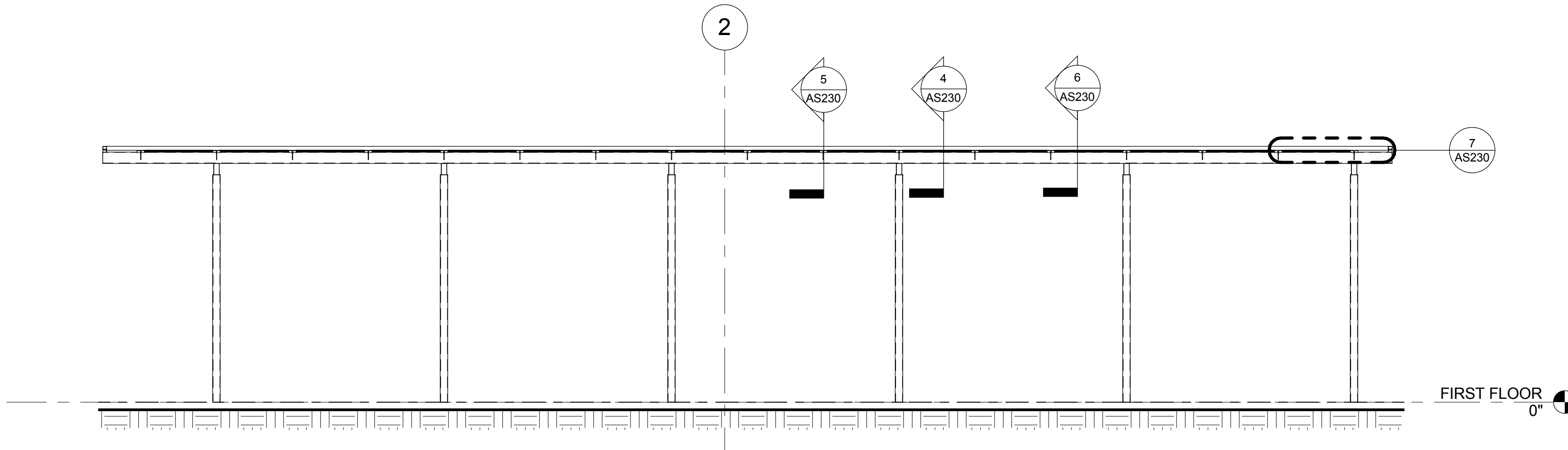
5 TRELLIS - SUPPORT BEAM
3" = 1'-0"



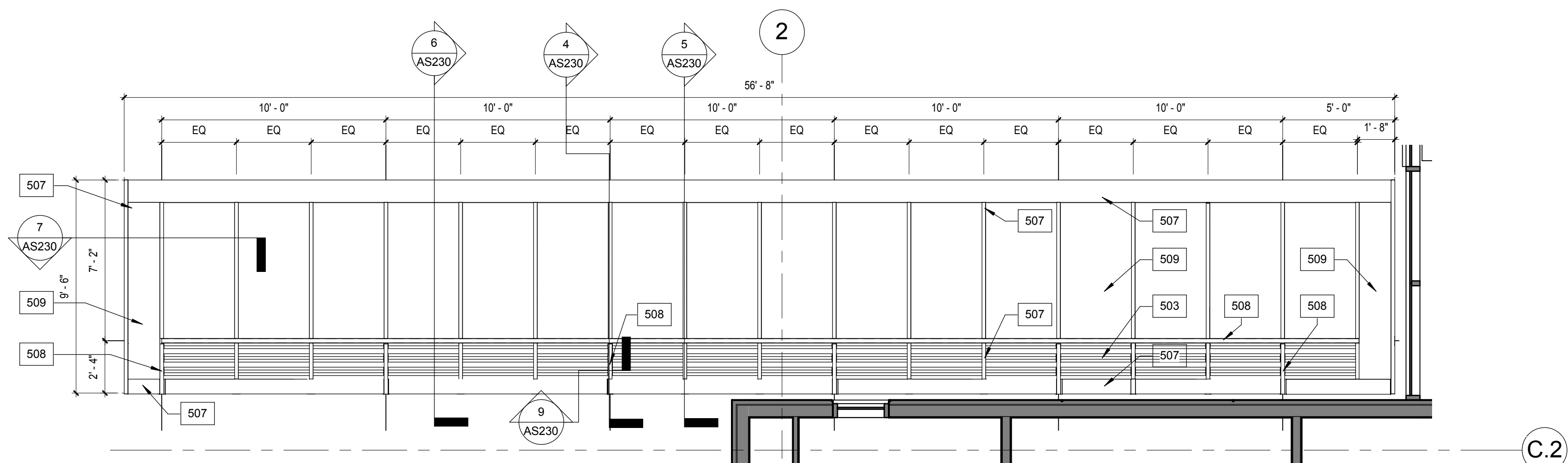
4 TRELLIS - BEAM AT COLUMN AND DRAIN
3" = 1'-0"



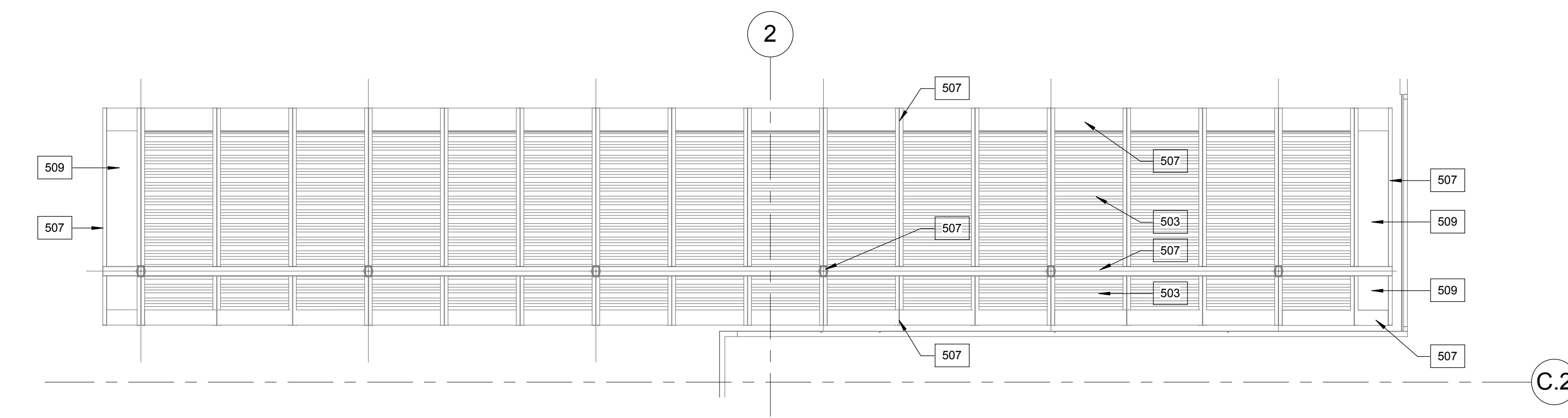
8 TRELLIS WEST ELEV
1/4" = 1'-0"



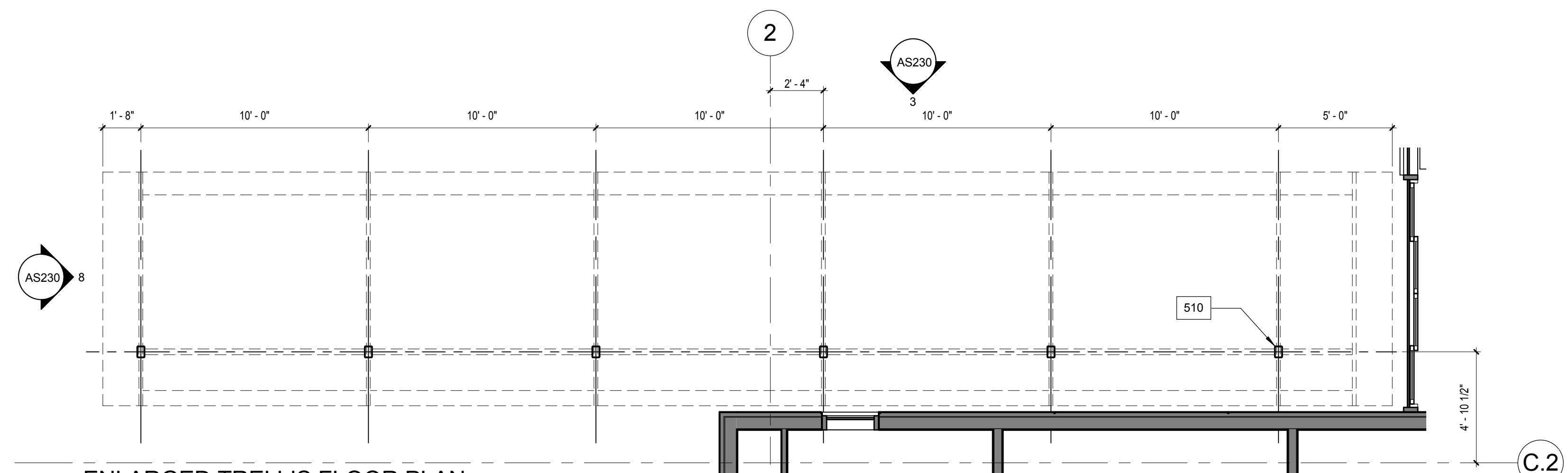
3 TRELLIS NORTH ELEV
1/4" = 1'-0"



2 ENLARGED TRELLIS ROOF PLAN
1/4" = 1'-0"



10 TRELLIS REFLECTED CEILING PLAN
1/4" = 1'-0"



1 ENLARGED TRELLIS FLOOR PLAN
1/4" = 1'-0"

GENERAL NOTES

- REFER TO SHEET 0001 FOR TYPICAL SYMBOLS AND ABBREVIATIONS
- EXTERIOR TRELLIS TO BE OMITTED PER DEDUCT ALT #8

KEY NOTES

- CENTRIA ECOSCREEN, BR5 - 36 CORRUGATED AND PERFORATED METAL PANEL SCREEN, (OMIT AT DEDUCT ALT #7)
- STEEL POSTS AND BEAMS, SPRAY PAINT FINISH OVER FACTORY PRIMED, 2 COATS, HIGH PERFORMANCE SPECIAL COATING. PAINT COLOR: MATCH MTL-3
- 20GA. SEAMLESS STAINLESS STEEL GUTTER REFER TO 4/AS230
- 14GA. STEEL PANEL FACTORY FINISH, 2 COATS, HIGH PERFORMANCE SPECIAL COATING. PAINT COLOR: MATCH MTL-3
- 3/8" SEALANT WITH BACKER ROD AROUND COLUMN TO CONCRETE JOINT TYPICAL.

CONSULTANTS:

ARCHITECT/ENGINEERS:

HMCArchitects
1827 E. Fir Avenue / Studio 103 / Fresno, CA 93720
T 559 322 2444 / www.hmcarchitects.com
HMC PROJECT #1393002-000

Drawing Title
TRELLIS ENLARGED PLANS & SECTIONS

Approved: Project Director

Project Title
Mental Health Psychosocial
Rehab Recovery and Health Care
for Homeless Veteran Center

Location
2615 E. CLINTON AVE, FRESNO, CA 93703

Date
08/11/2014

Checked
Checker

Drawn
Author

Project Number
570-217
Building Number
37

Drawing Number
AS230
Dwg. 24 of 197

Office of
Construction
and Facilities
Management:

Department of
Veterans Affairs