

A

B

C

D

E

F

A

B

C

D

E

F

0
6"
three inches = one foot
1
6"
one and one half inches = one foot
2
6"
one inch = one foot
3
6"
three quarters inch = one foot
4
6"
one half inch = one foot
5
6"
one eighth inch = one foot
6
6"
one quarter inch = one foot
7
6"
one eighth inch = one foot
8
6"
one eighth inch = one foot
9
6"
one eighth inch = one foot
10
6"
one eighth inch = one foot
11
6"
one eighth inch = one foot
12
6"
one eighth inch = one foot
13
6"
one eighth inch = one foot
14
6"
one eighth inch = one foot
15
6"
one eighth inch = one foot
16
6"
one eighth inch = one foot

GENERAL NOTES

1. REFER TO SHEET G001 FOR TYPICAL SYMBOLS AND ABBREVIATIONS
2. LIGHT LOUVER IS LOCATED BEHIND THE SOUTH-FACING DAYLIGHTING GLAZING PANELS ONLY. TYPICAL LOCATION OF THE DAYLIGHTING GLAZING PANEL IS BETWEEN 7'-6" & 9'-0" FROM THE FINISH FLOOR.

KEYNOTES

- 503 CENTRIA ECOSCREEN, BR5 - 36 CORRUGATED AND PERFORATED METAL PANEL SCREEN, (OMIT AT DEDUCT ALT #7)
504 EXTERIOR TRELLIS. SEE SHEET AS230 FOR DETAILS, (OMIT AT DEDUCT ALT #8)
505 CENTRIA BR5 - 36 CORRUGATED METAL PANEL MECHANICAL SCREEN
506 CENTRIA LOUVER SYSTEM TO MATCH CENTRIA BR5 - 36 PROFILE
800 4'-6" DEEP HORIZONTAL SUNSHADE DEVICES WITH 4" AIRFOIL AND 10" WEDGE FASCIA, SEE DETAIL 2/AS940 FOR ATTACHMENTS, (OMIT AT DEDUCT ALT #6)
902 WALL MOUNTED EXTERIOR LIGHT FIXTURE, SEE ELECTRICAL DRAWINGS.
903 EXTERIOR ILLUMINATED BUILDING SIGN (EI-09.7). CONTRACTOR PROVIDED CONTRACTOR INSTALLED (CONTRACTOR TO PROVIDE REQUIRED BACKING PER DETAIL 2/AS960 FOR LENGTH AND HEIGHT OF SIGNAGE).

LIST OF ALTERNATES

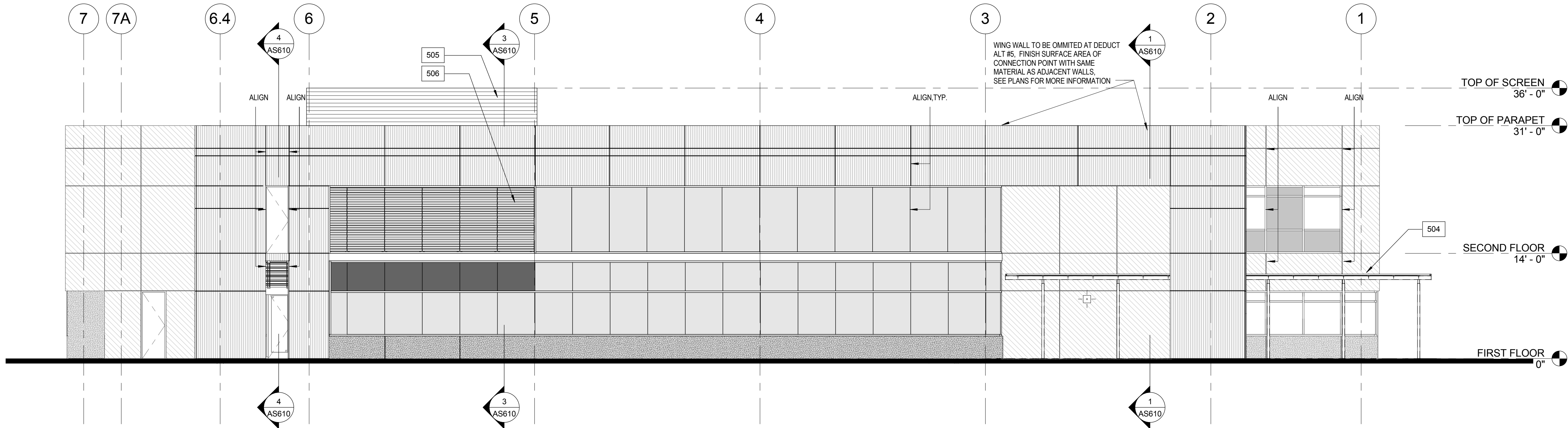
ALT #	PRIORITY	DESCRIPTION
2	11	EIFS IN LIEU OF CENTRIA
3	10	EIFS IN LIEU OF PLASTIC
4	9	CEILING SOFFIT, FINISHES & QUARTZ SURFACE
5	8	REMOVE WING WALL @ ENTRY
6	7	REMOVE SUN SHADES
7	6	REDUCE ECO SCREENS
8	5	REMOVE TRELLIS
9	1	REDUCE HARDSCAPING
15	3	REDUCED AMOUNT FOR FIXED FURNISHING (CASEWORK)
16	4	CHANGE GLASS GUARDRAIL @ INTERIOR STAIR TO STEEL GUARDRAIL
17	12	REDUCE EXTERIOR GLAZING AND CHANGE EXTERIOR WALL FINISHES TO PAINTED CEMENT PLASTER
19	2	PORTION OF 1ST AND 2ND FLOOR AS UNFINISHED SPACE

NOTE: REFER TO SHEET G001 FOR DESCRIPTIVE INFORMATION REGARDING EACH ALTERNATIVE

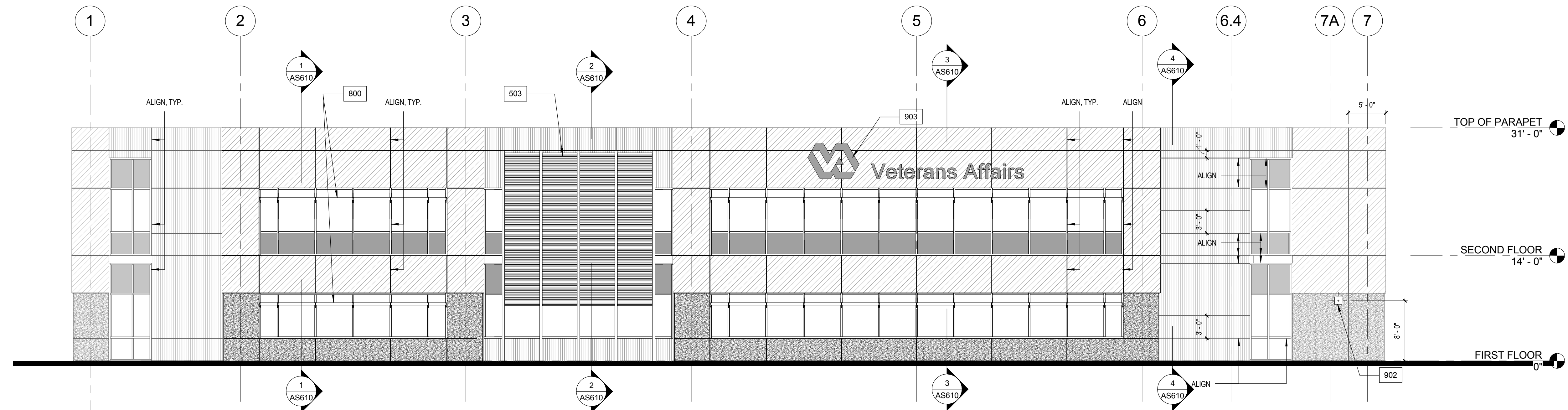
EXTERIOR FINISH LEGEND

GL-1	CLEAR VISION GLASS
GL-2	BLUE VISION GLASS
GL-3	CLEAR SPANDREL GLASS
GL-4	BLUE SPANDREL GLASS
	PLASTIC WALL PANEL SYSTEM. REFER TO SPECIFICATIONS. (REPLACE WITH EIFS SYSTEM AT DEDUCT ALT #3)
	EIFS SYSTEM
	CENTRIA FORMABOND II COMPOSITE METAL PANELS W/ METAL STUDS AND 1/2" PL WOOD BEHIND. REFER TO SPECIFICATIONS. (REPLACE WITH EIFS SYSTEM AT DEDUCT ALT #2)
	CENTRIA BR5 - 36 CORRUGATED METAL PANELS, REFER TO SPECIFICATIONS
	CENTRIA ECOSCREEN, BR5 - 36 CORRUGATED AND PERFORATED METAL PANELS, REFER TO SPECIFICATIONS. (OMIT AT DEDUCT ALT #7)

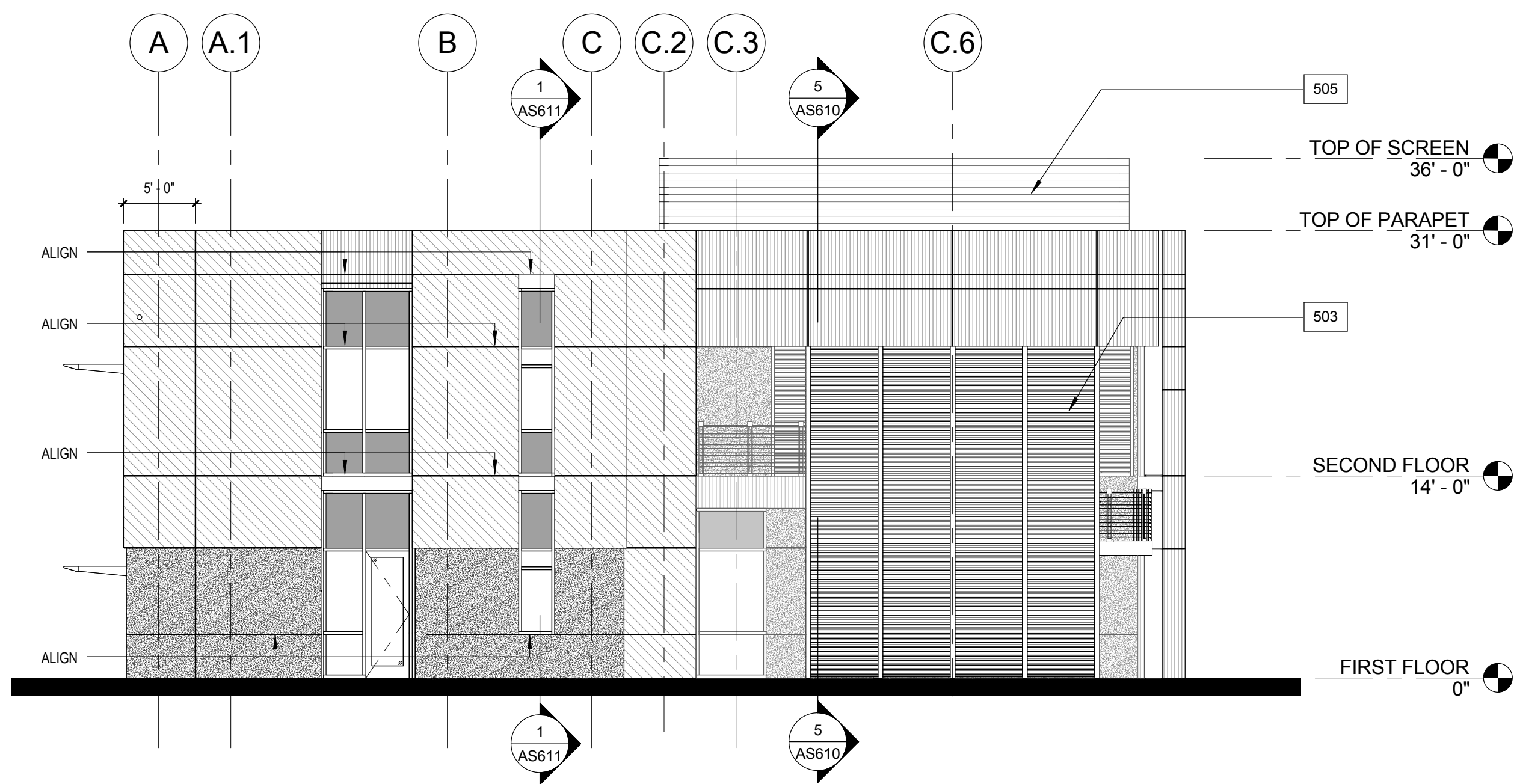
NOTE:
REFER TO SHEET AF201 FOR EXTERIOR FINISHES



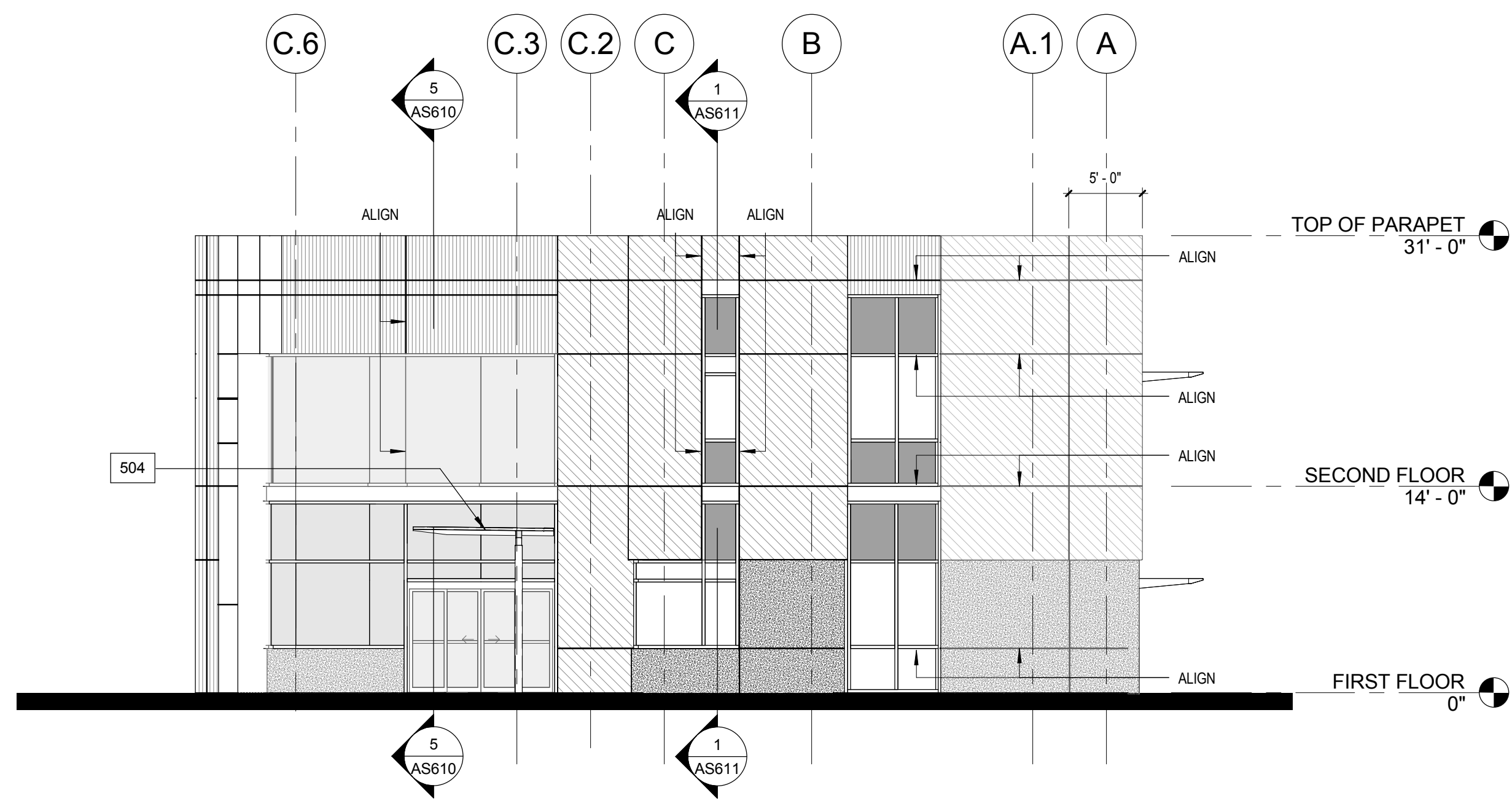
1 NORTH ELEVATION
1/8" = 1'-0"



2 SOUTH ELEVATION
1/8" = 1'-0"



4 EAST ELEVATION
1/8" = 1'-0"



3 WEST ELEVATION
1/8" = 1'-0"

CONSULTANTS:

ARCHITECT/ENGINEERS:

HMC Architects

1827 E. Fir Avenue / Studio 103 / Fresno, CA 93720
T 559 322 2444 / www.hmcarchitects.com
HMC PROJECT #1393002-000



Drawing Title
EXTERIOR ELEVATIONS

Approved: Project Director

Project Title
Mental Health Psychosocial
Rehab Recovery and Health Care
for Homeless Veteran Center

Location
2615 E. CLINTON AVE, FRESNO, CA 93703

Date
08/11/2014

Checked
WB, GV

Drawn
SK

Project Number
570-217

Building Number
37

Drawing Number
AS510

Dwg. 28 of 197

Office of
Construction
and Facilities
Management:

