

A

B

C

D

E

F

F

A

B

C

D

E

F

F

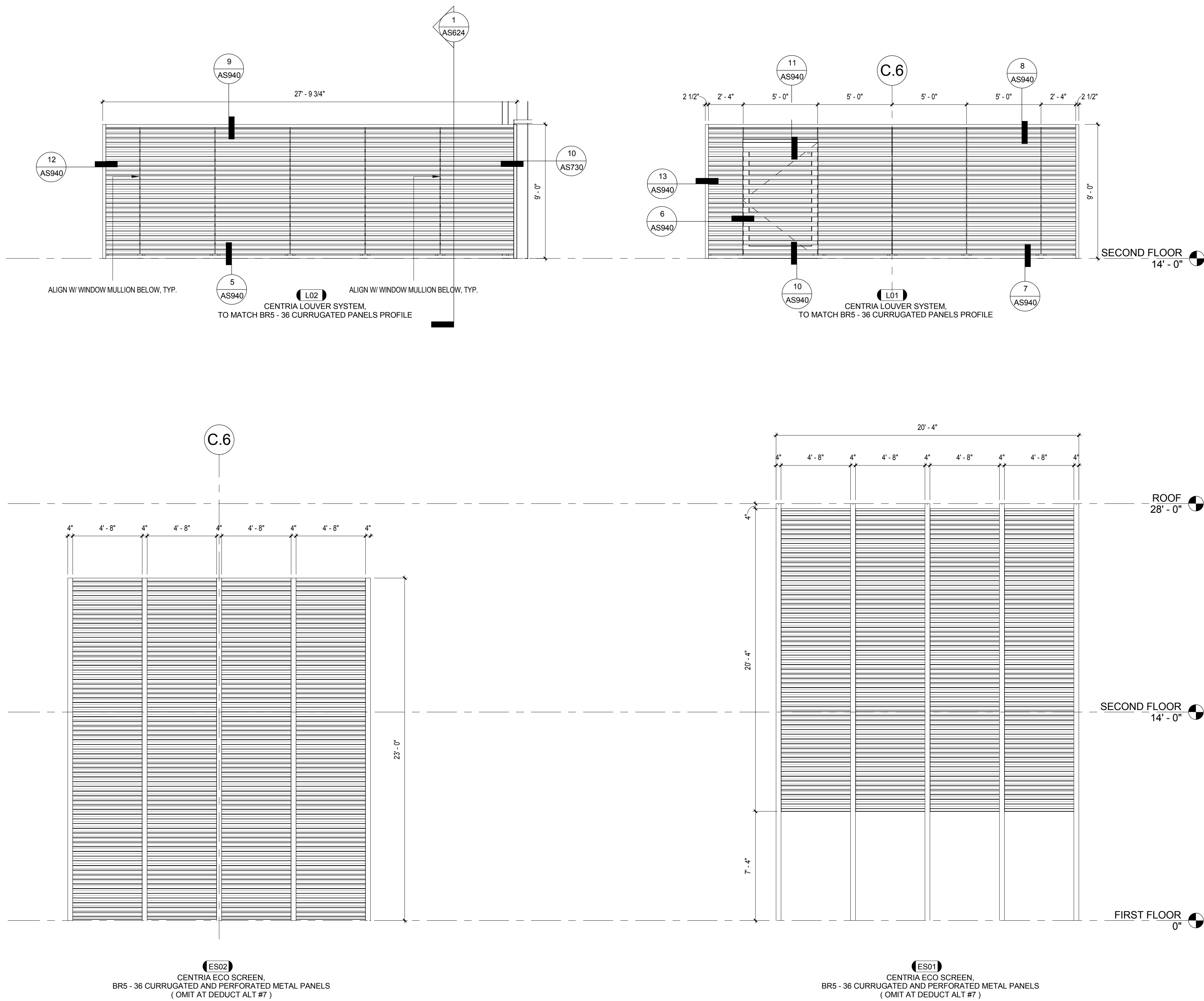
GENERAL NOTES

- REFER TO SHEET G101 FOR TYPICAL SYMBOLS AND ABBREVIATIONS
- REFER TO SHEET AS923 FOR THRESHOLD DETAILS
- REFER TO SHEET AS974 FOR SIGNAGE DETAILS

LIST OF ALTERNATES

ALT #	PRIORITY	DESCRIPTION
2	11	EFIS IN LIEU OF CENTRIA
3	10	EFIS IN LIEU OF PLASTIC
4	9	CEILING SOFFIT, FINISHES & QUARTZ SURFACE
5	8	REMOVE WING WALL @ ENTRY
6	7	REMOVE SUN SHADES
7	6	REDUCE ECO SCREENS
8	5	REMOVE TRELLIS
9	1	REDUCE HARDSCAPING
15	3	REDUCED AMOUNT FOR FIXED FURNISHING (CASEWORK)
16	4	CHANGE GLASS GUARDRAIL @ INTERIOR STAIR TO STEEL GUARDRAIL
17	12	REDUCE EXTERIOR GLAZING AND CHANGE EXTERIOR WALL FINISHES TO PAINTED CEMENT PLASTER
19	2	PORTION OF 1ST AND 2ND FLOOR AS UNFINISHED SPACE

NOTE: REFER TO SHEET G101 FOR DESCRIPTIVE INFORMATION REGARDING EACH ALTERNATIVE



CONSULTANTS:

ARCHITECT/ENGINEERS:

HMC Architects

1827 E. Fir Avenue / Studio 103 / Fresno, CA 93720
T 559 322 2444 / www.hmcarchitects.com
HMC PROJECT #1393002-000

Drawing Title
ECO SCREEN & LOUVER SCHEDULE

Approved: Project Director

Project Title
Mental Health Psychosocial
Rehab Recovery and Health Care
for Homeless Veteran Center

Location
2615 E. CLINTON AVE, FRESNO, CA 93703

Date
08/11/2014

Checked
Checker

Drawn
JM SK

Project Number
570-217

Building Number
37

Drawing Number
AS932

Dwg. 62 of 197

Office of
Construction
and Facilities
Management:

Department of
Veterans Affairs