

A

B

C

D

E

F

A

B

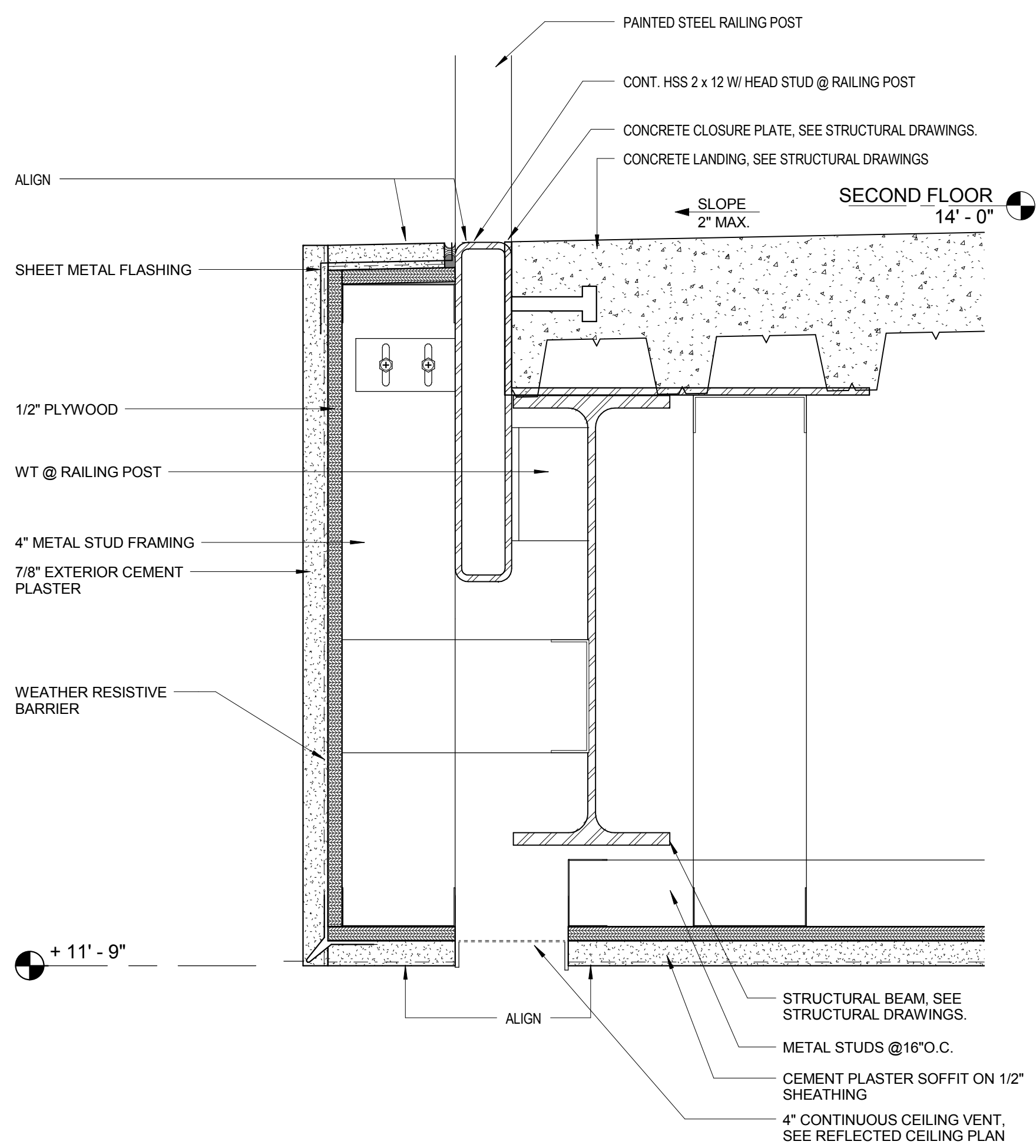
C

D

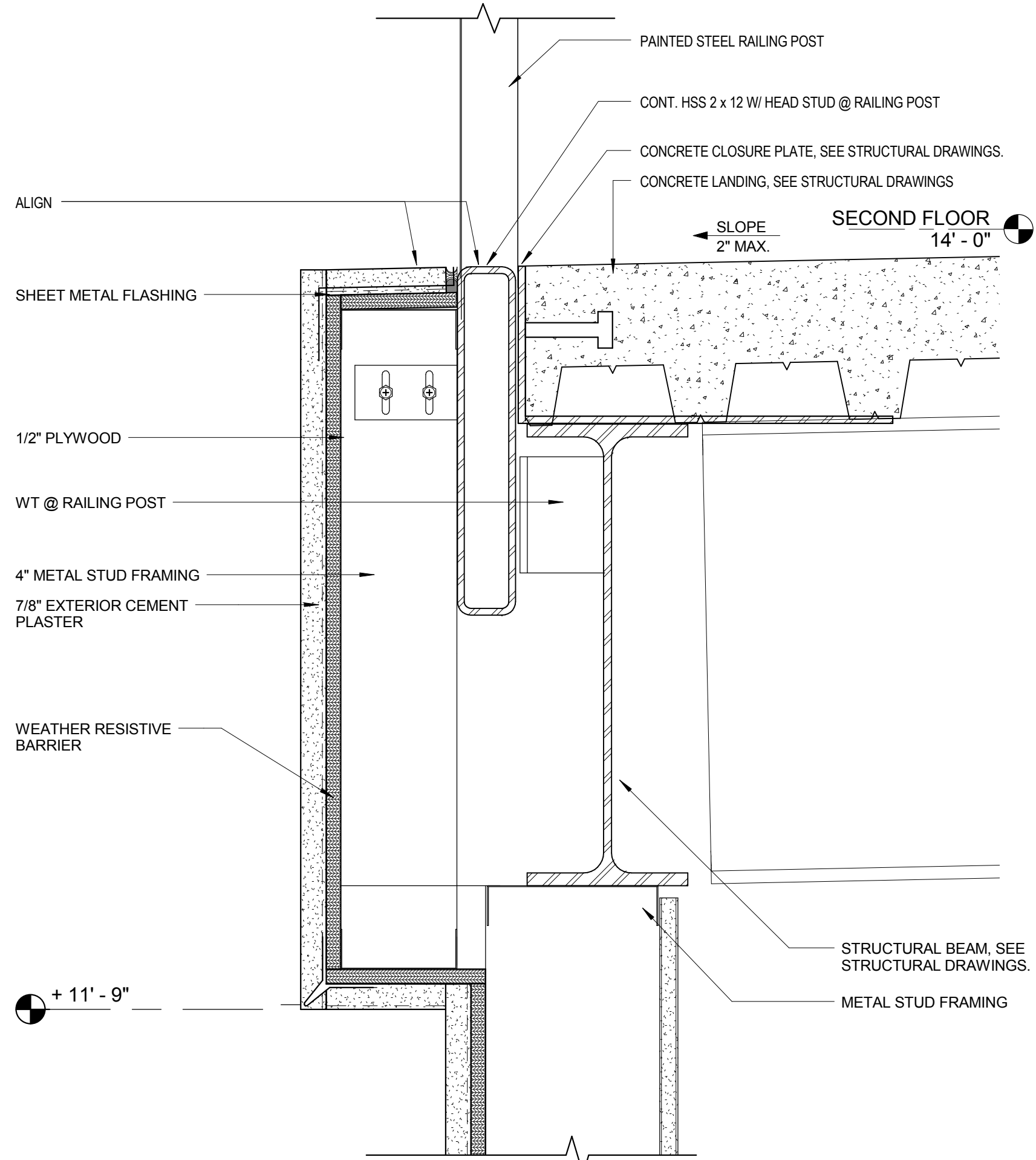
E

F

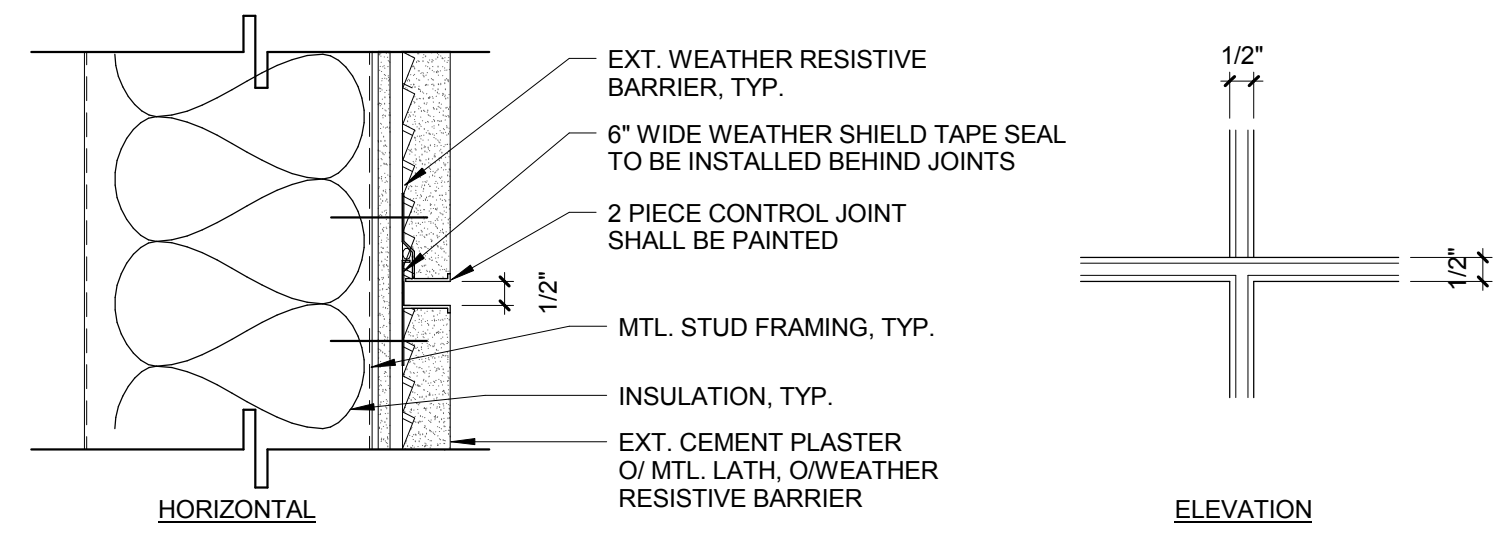
three inches = one foot  
one and one half inches = one foot  
one inch = one foot  
three quarters inch = one foot  
one half inch = one foot  
three eighths inch = one foot  
one quarter inch = one foot  
one eighth inch = one foot



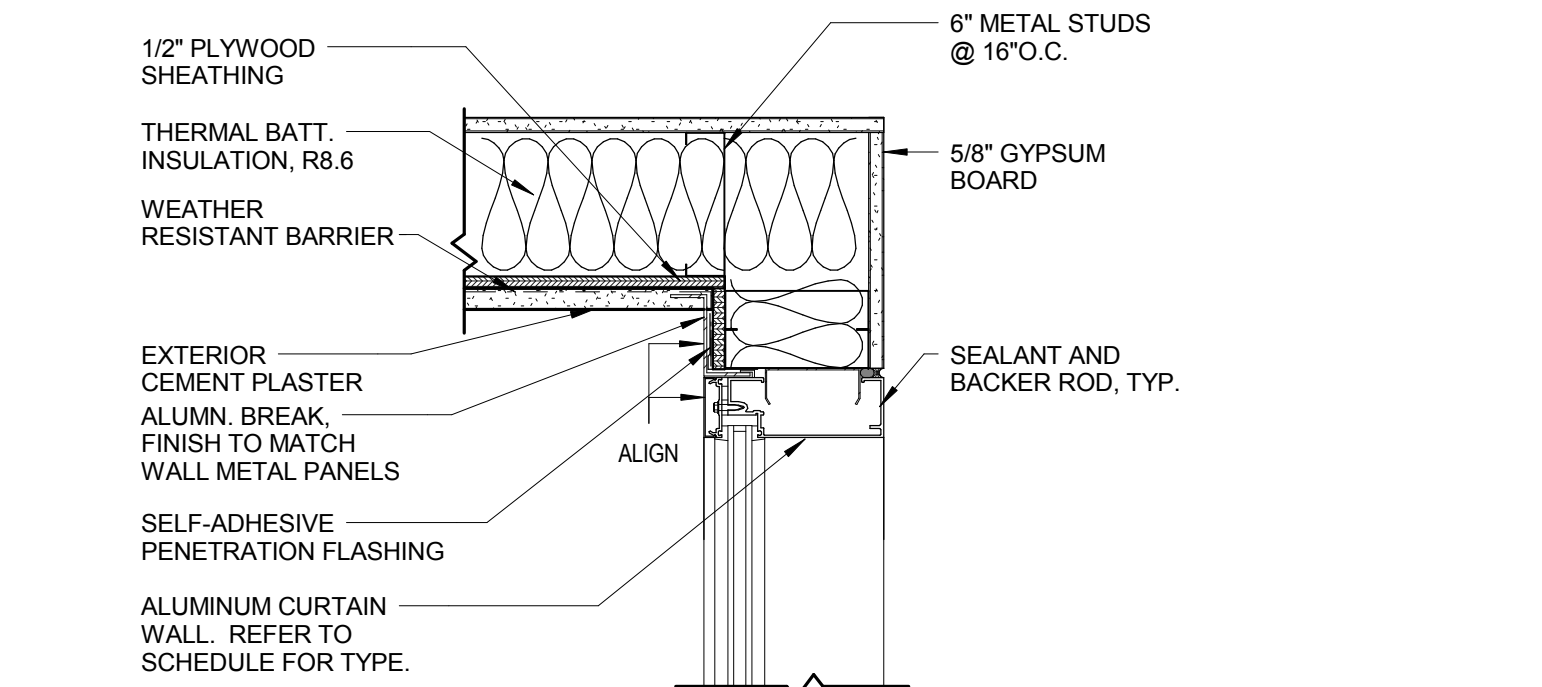
15 DETAIL - STAIR #2 LANDING  
3" = 1'-0"



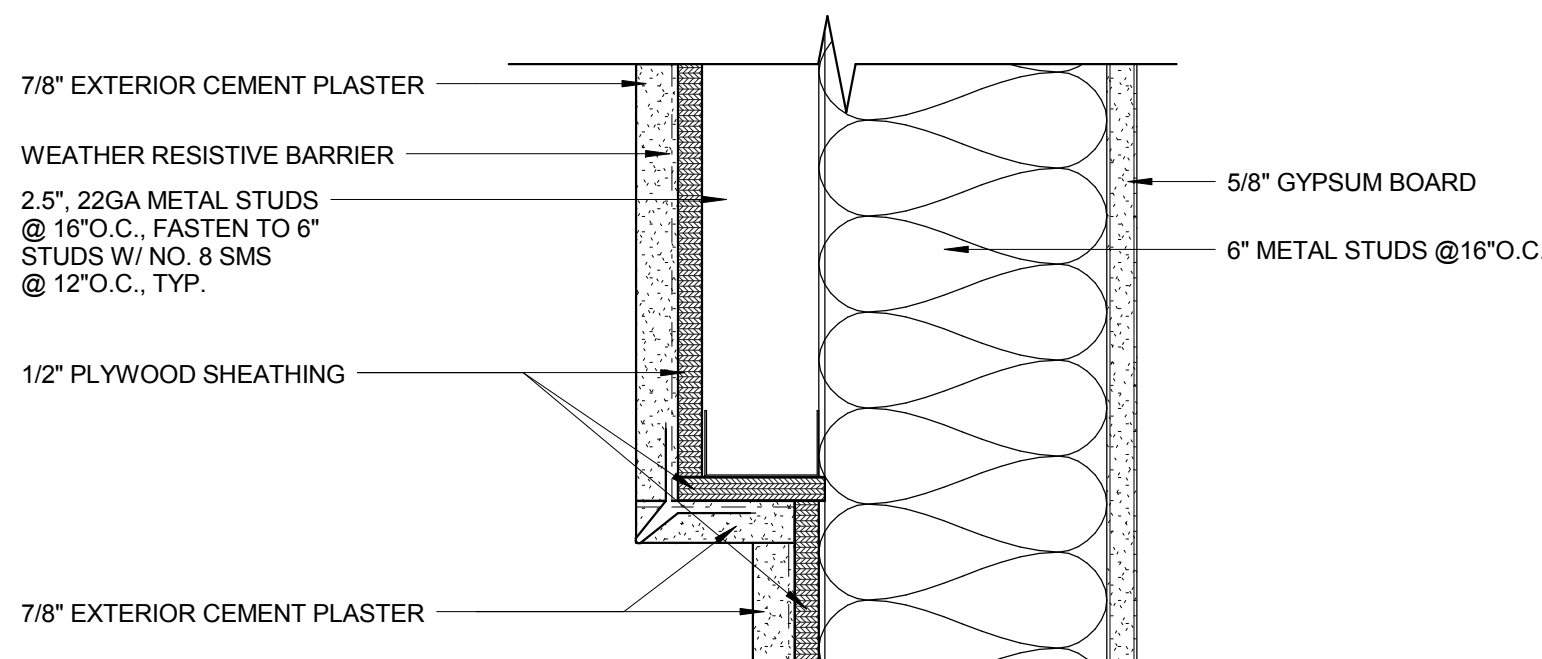
14 DETAIL - STAIR #2 LANDING  
3" = 1'-0"



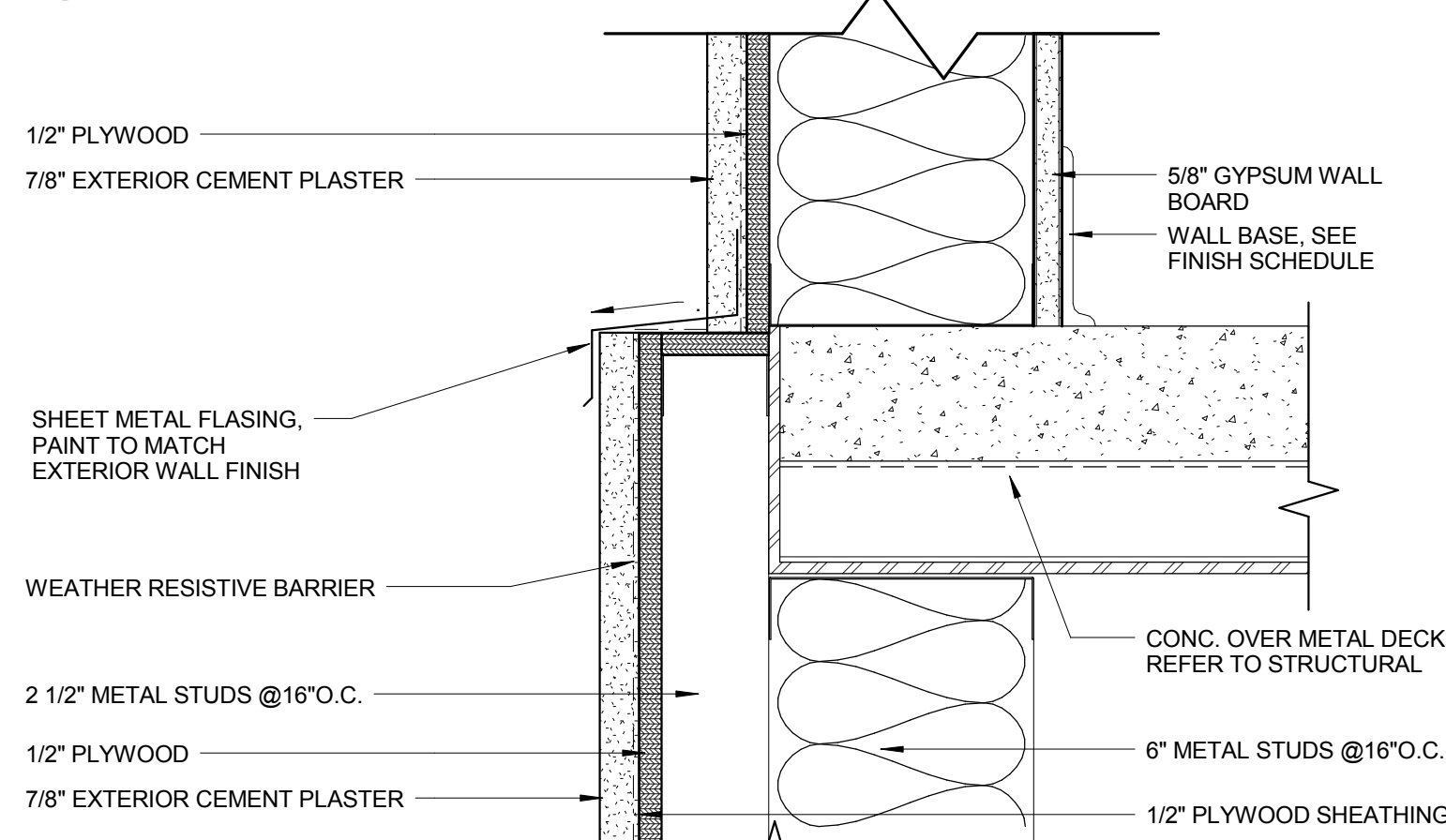
13 PLASTER REVEAL HORIZONTAL & VERTICAL  
3" = 1'-0"



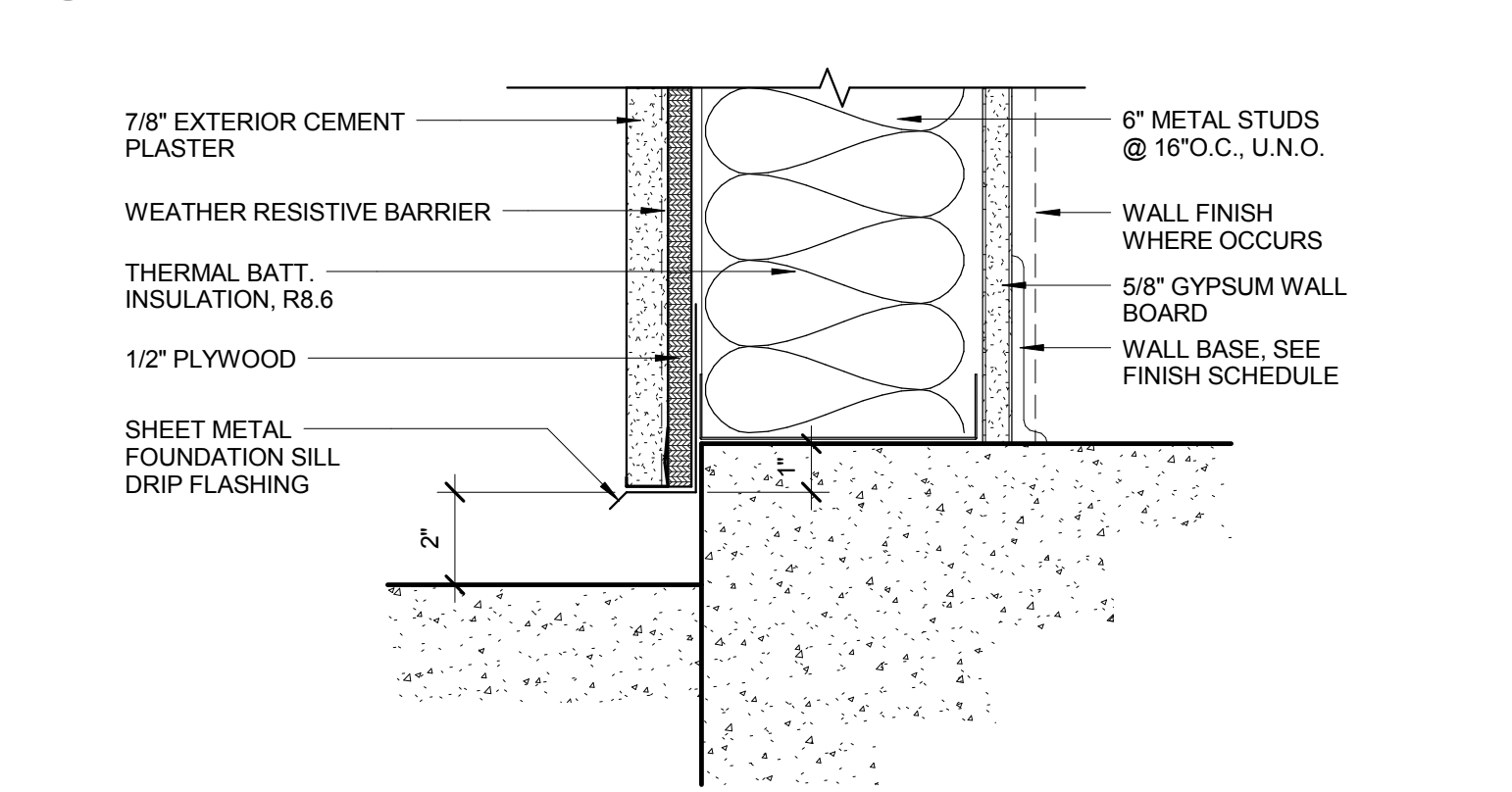
12 CURTAINWALL JAMB DETAIL  
1 1/2" = 1'-0"



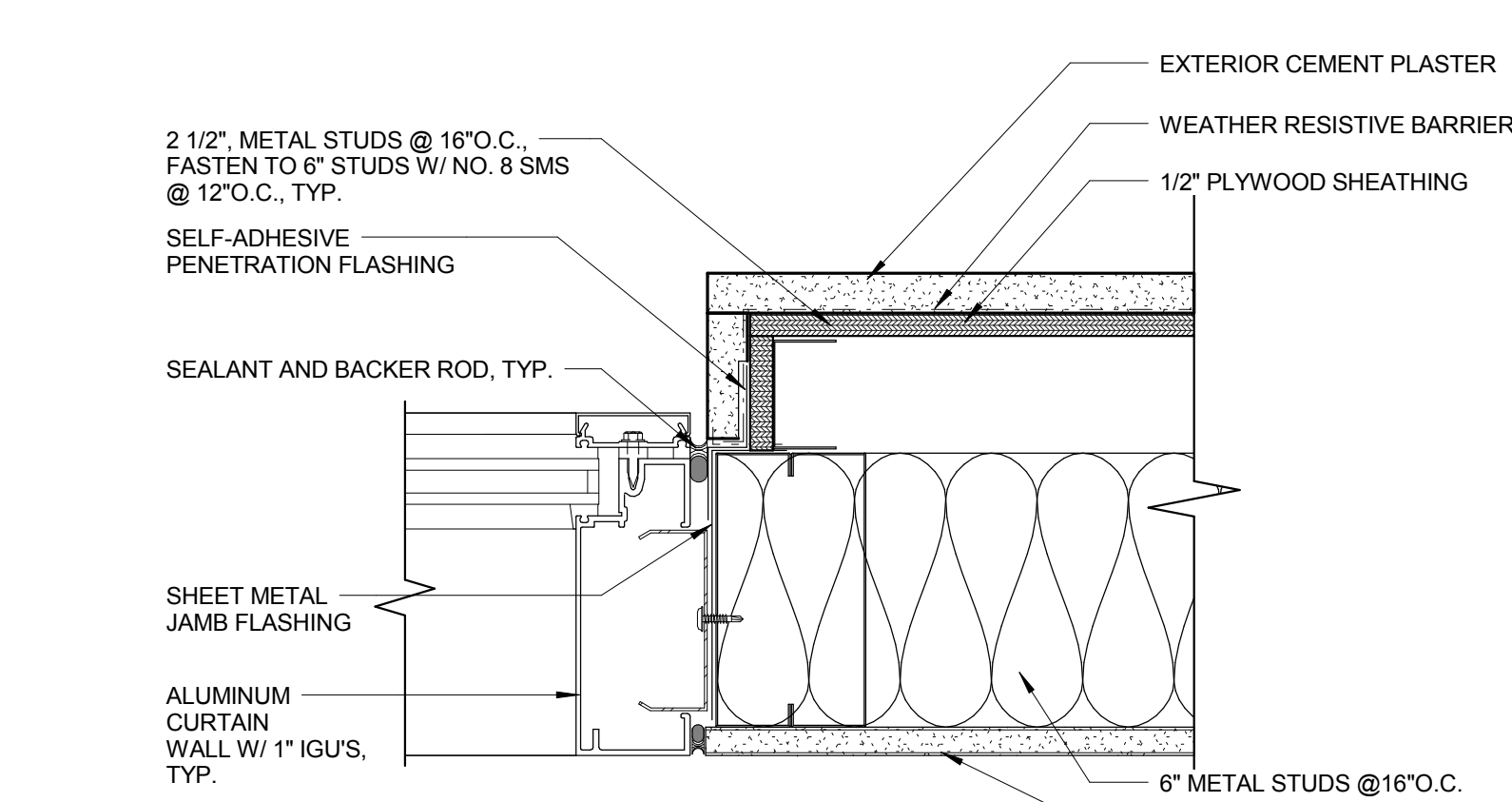
11 EXTERIOR CEMENT PLASTER @ OFFSET  
3" = 1'-0"



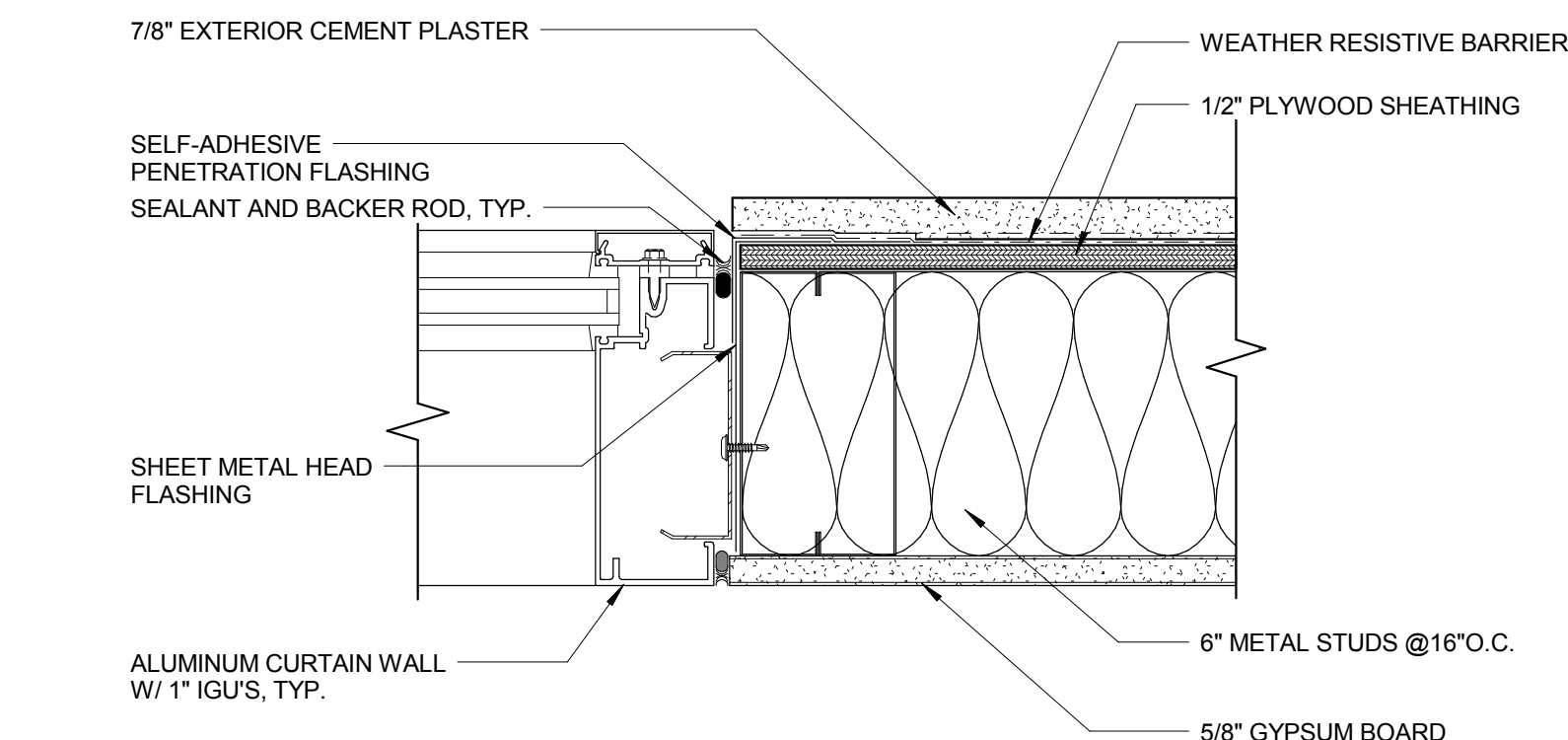
10 EXTERIOR CEMENT PLASTER DETAIL  
3" = 1'-0"



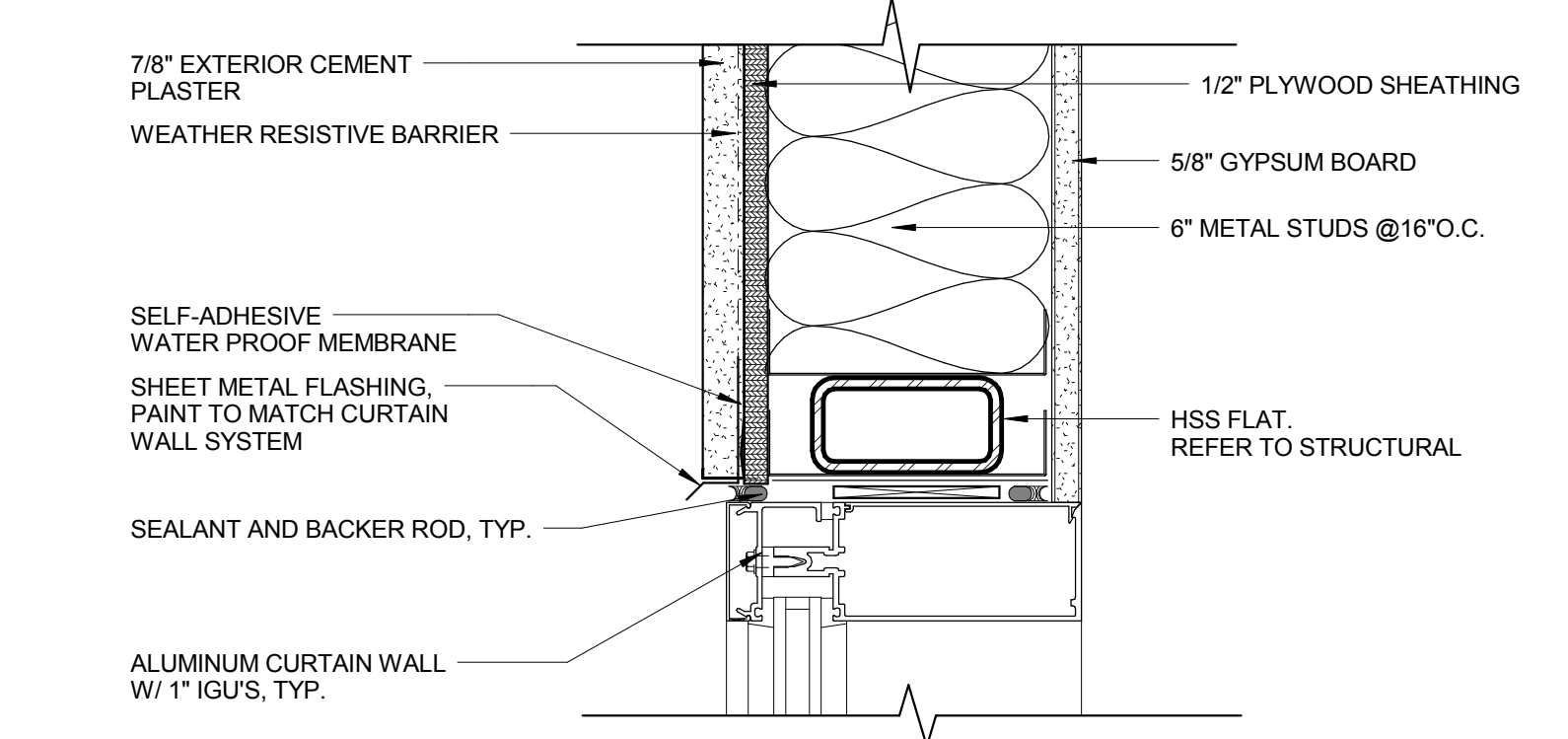
9 TYPICAL PLASTER WALL BASE  
3" = 1'-0"



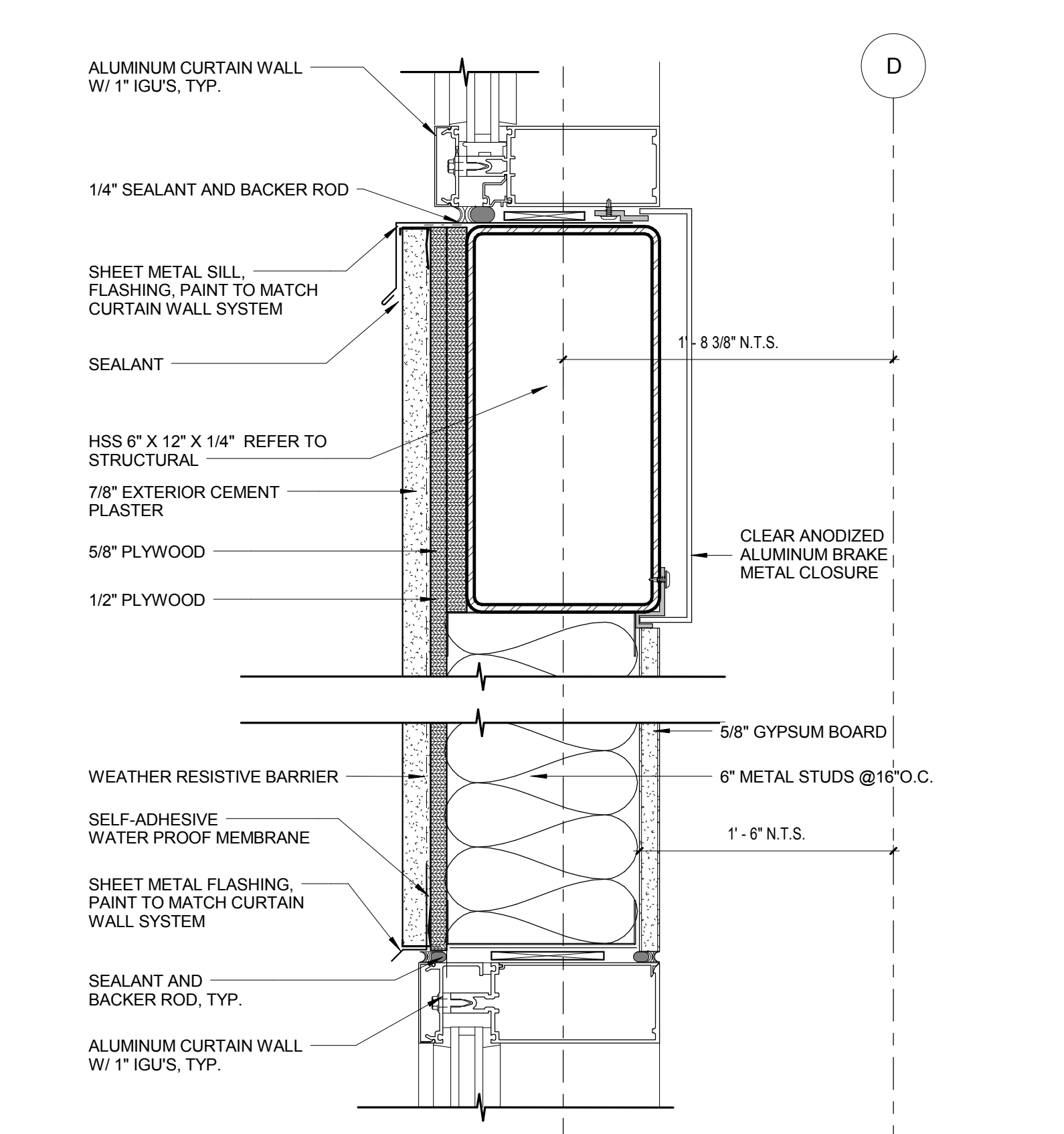
8 CURTAIN WALL JAMB AT PLASTER (2ND FLOOR)  
3" = 1'-0"



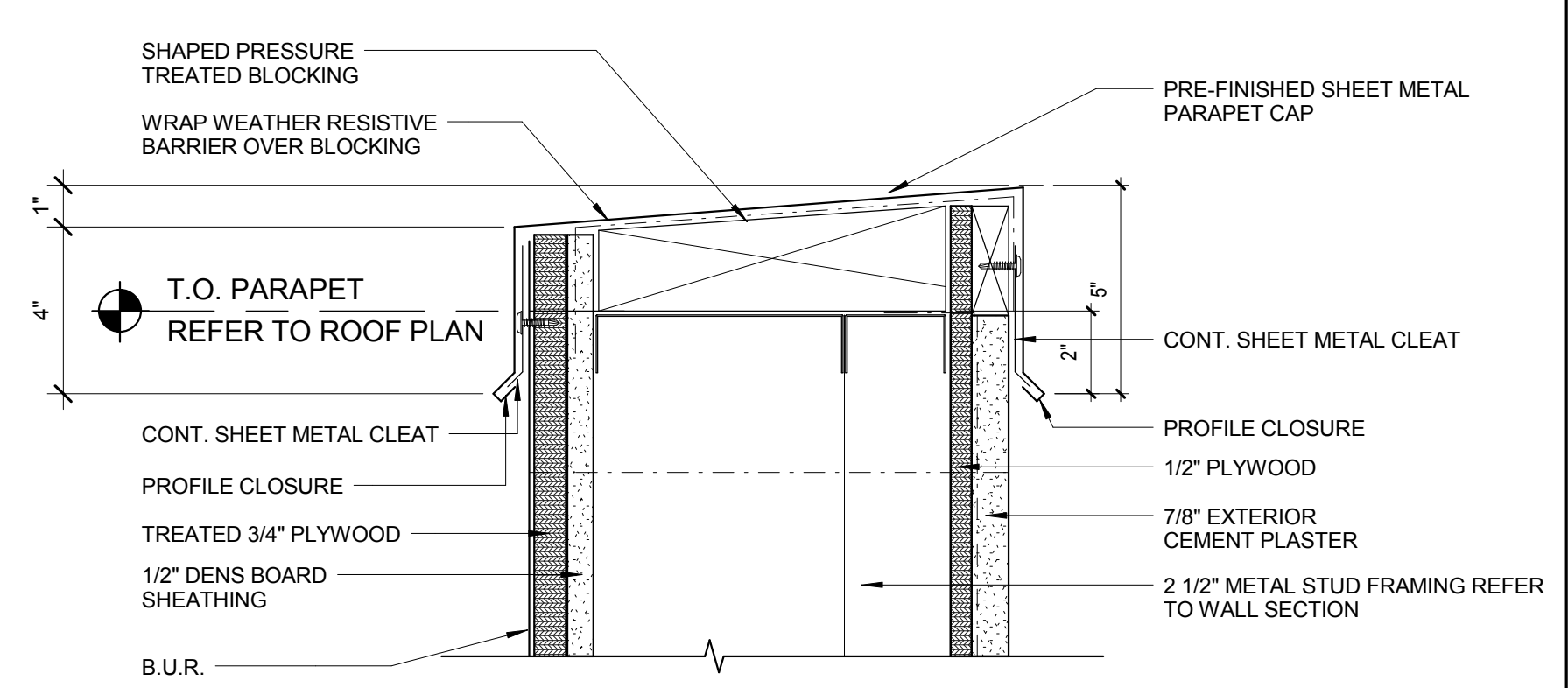
7 CURTAIN WAL JAMB AT PLASTER (1ST FLOOR)  
3" = 1'-0"



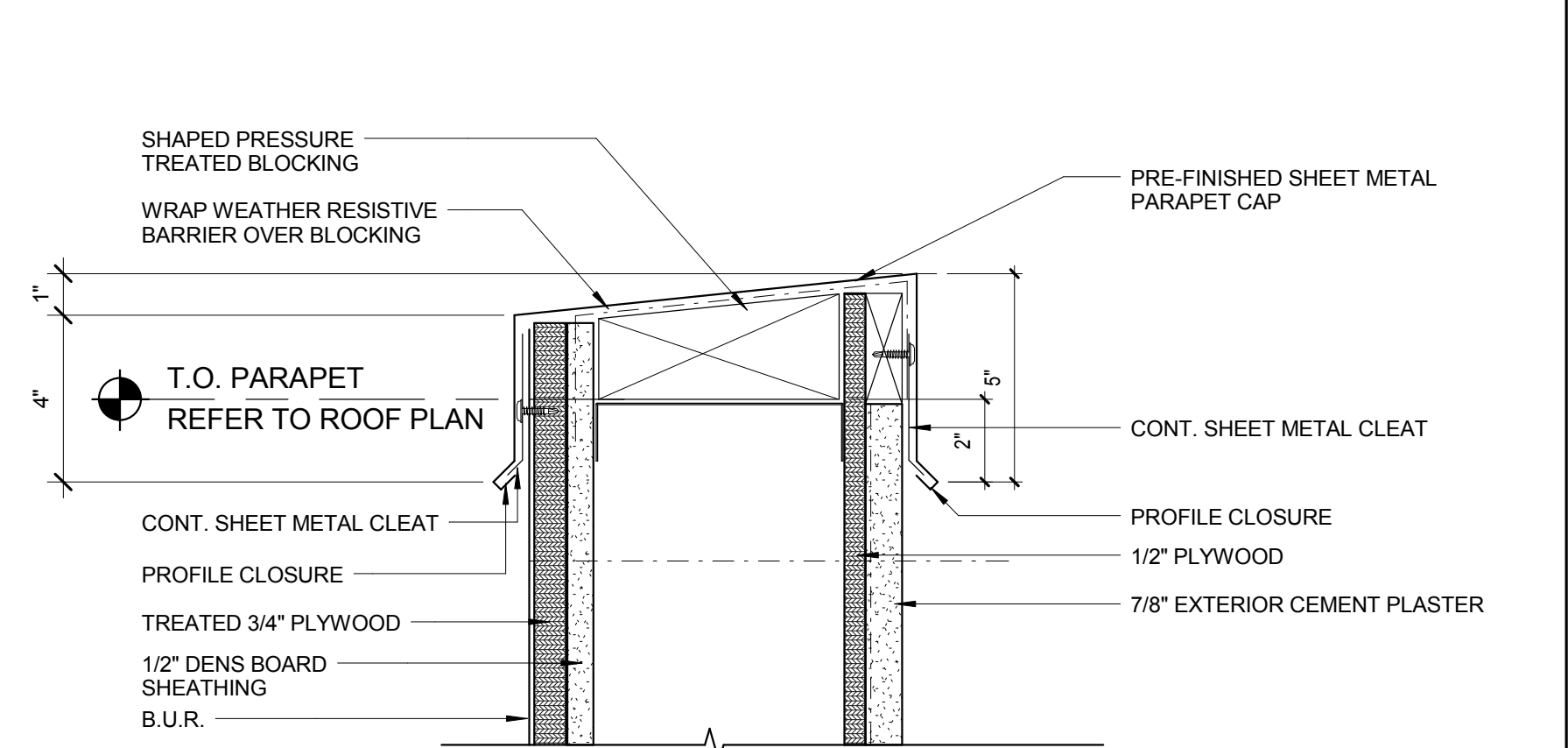
6 CURTAIN WALL HEAD AT EXTERIOR CEMENT PLASTER  
3" = 1'-0"



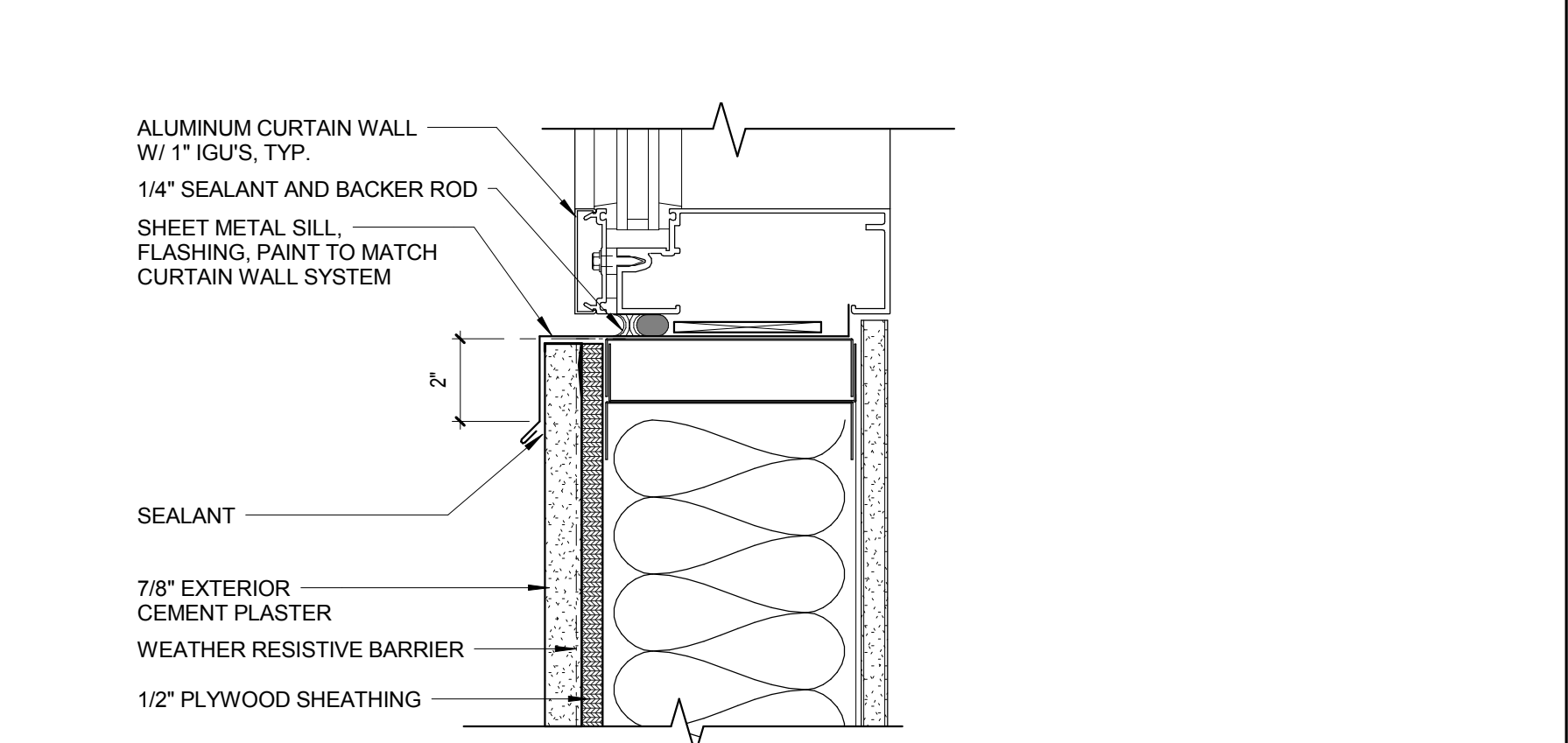
5 CURTAIN WALL DETAIL  
3" = 1'-0"



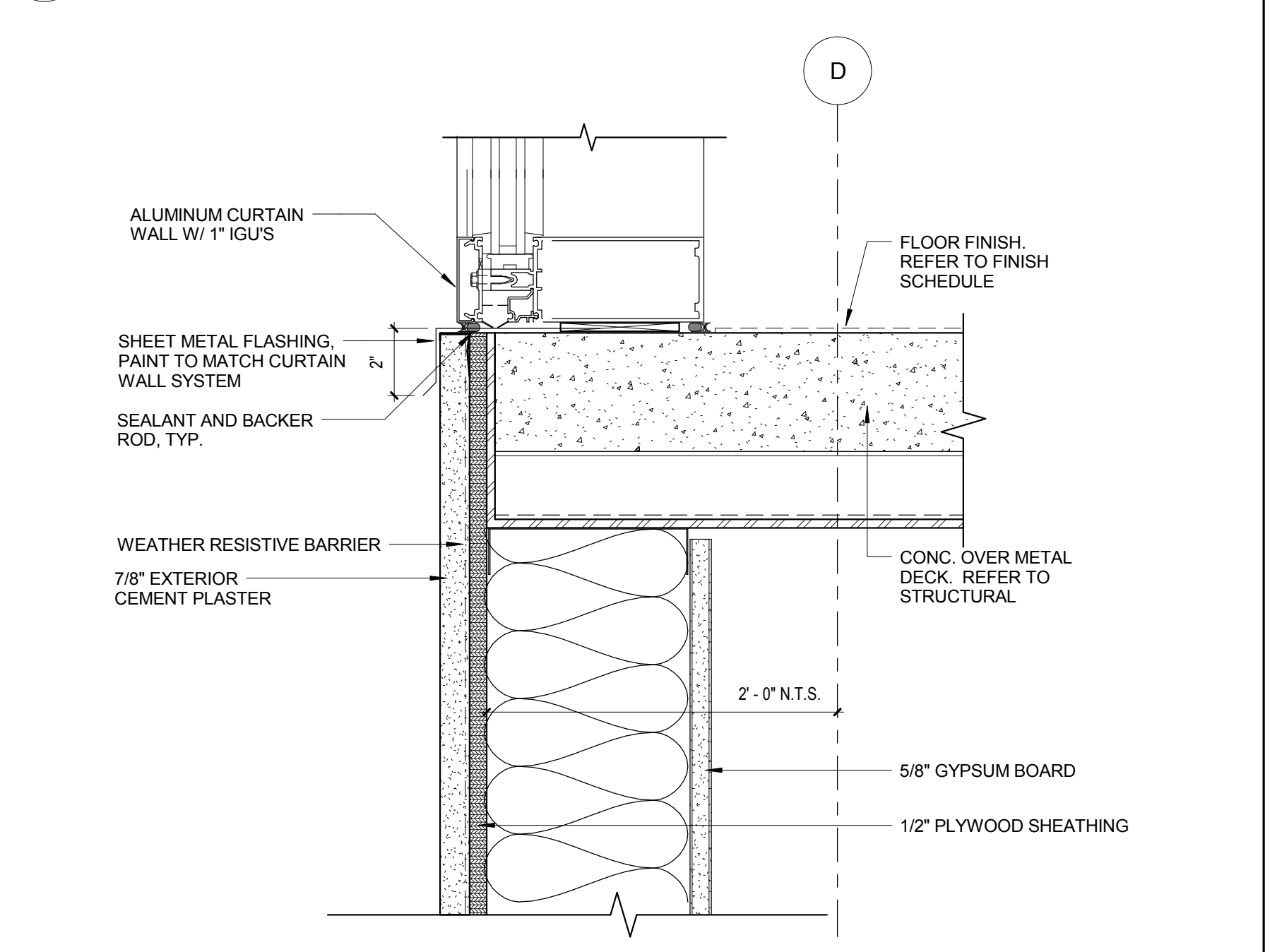
4 PARAPET CAP @ EXTERIOR CEMENT PLASTER  
3" = 1'-0"



3 PARAPET CAP DETAIL  
3" = 1'-0"



2 CURTAIN WALL SILL AT EXTERIOR CEMENT PLASTER  
3" = 1'-0"



1 CURTAIN WALL SILL AT 2ND FLOOR  
3" = 1'-0"

CONSULTANTS:

ARCHITECT/ENGINEERS:

HMC Architects

1827 E. Fir Avenue / Studio 103 / Fresno, CA 93720  
T 559 322 2444 / www.hmcarchitects.com  
HMC PROJECT #1393002-000

Drawing Title  
EXTERIOR CEMENT PLASTER DETAILS -  
DEDUCTIVE ALTERNATE #17

Approved: Project Director

Project Title  
Mental Health Psychosocial  
Rehab Recovery and Health Care  
for Homeless Veteran Center

Location  
2615 E. CLINTON AVE, FRESNO, CA 93703

Date  
08/11/2014

Checked  
Checker

Drawn  
Author

Project Number  
570-217  
Building Number  
37

Drawing Number  
AS952  
Dwg. 69 of 197

Office of  
Construction  
and Facilities  
Management.

Department of  
Veterans Affairs