

A

B

C

D

E

F

A

B

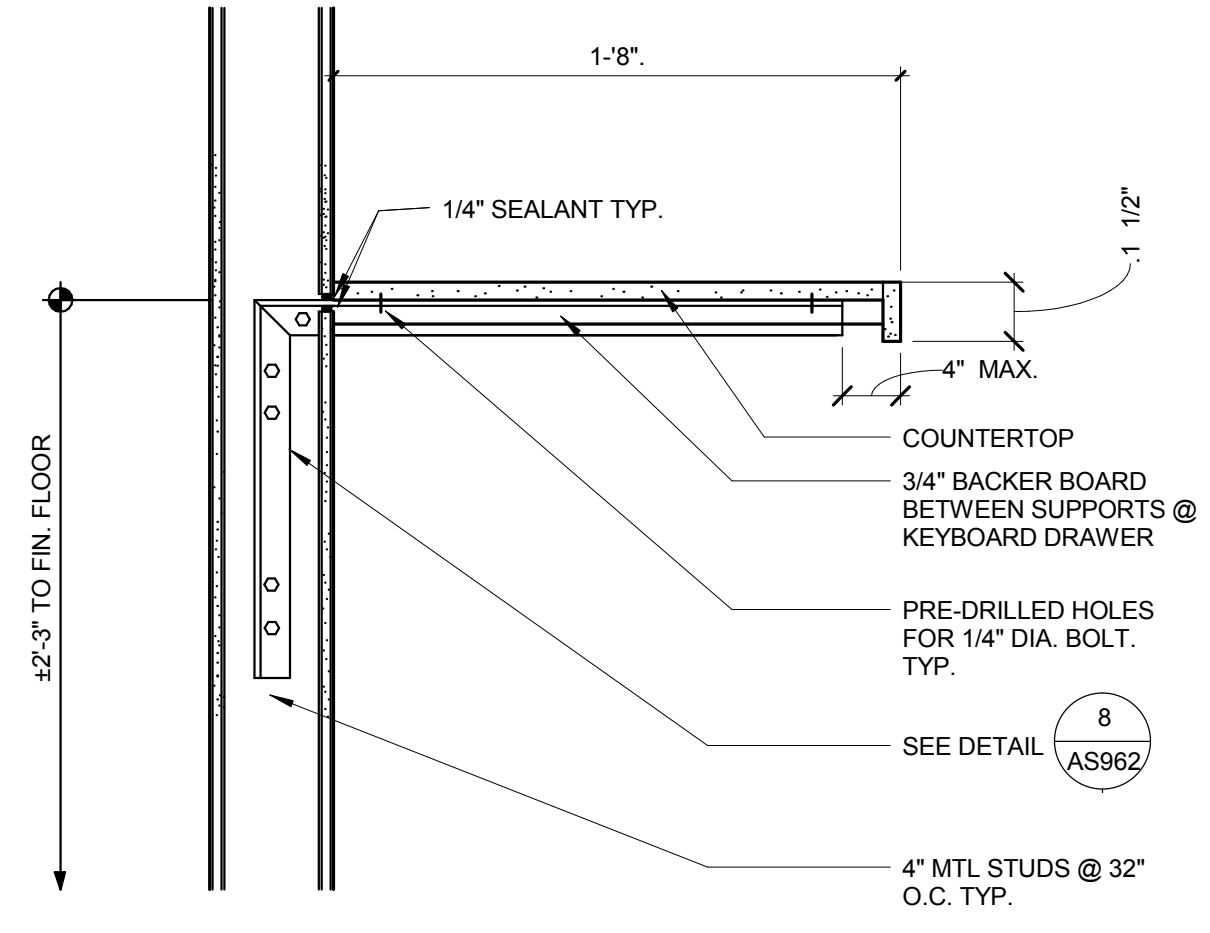
C

D

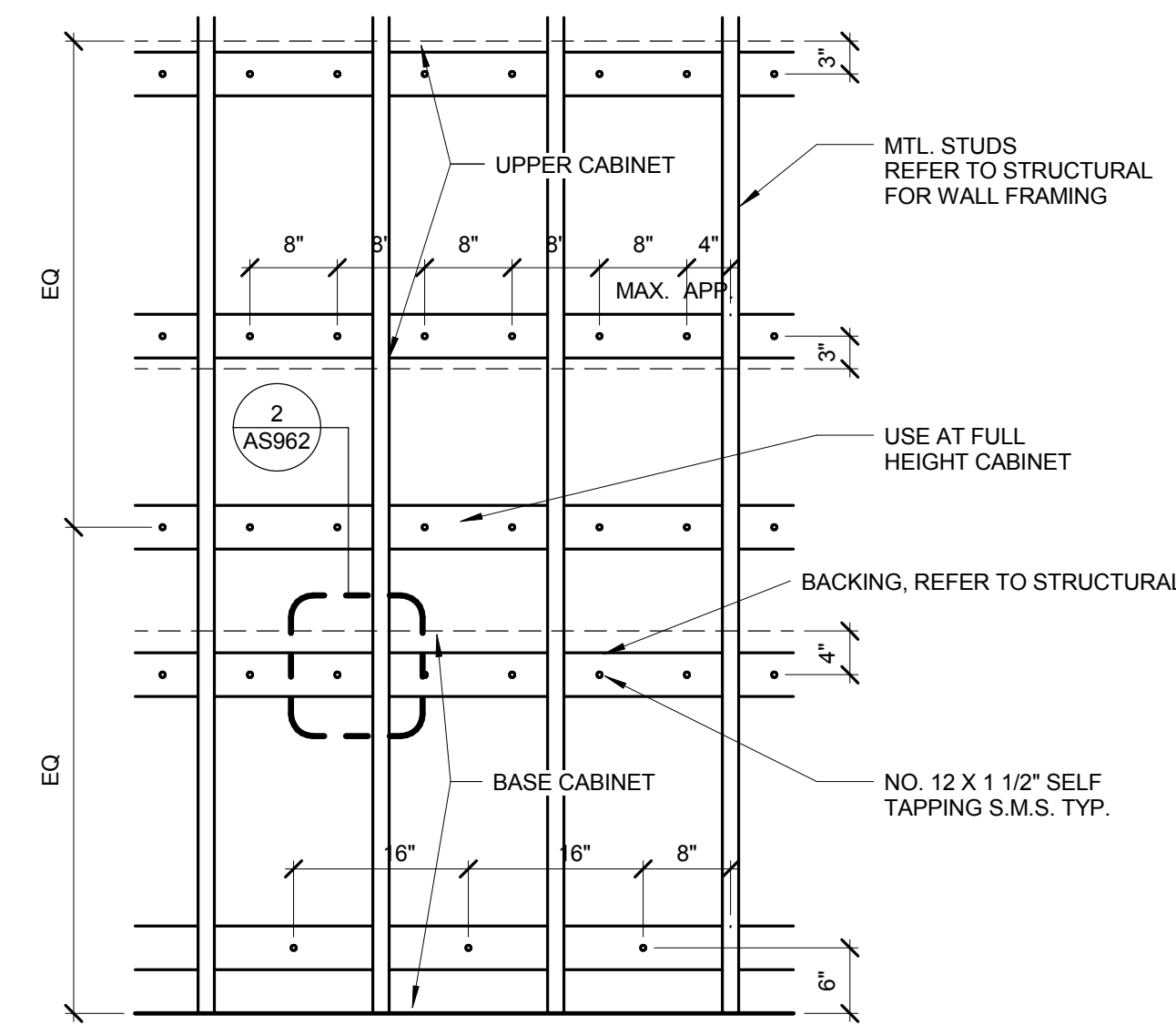
E

F

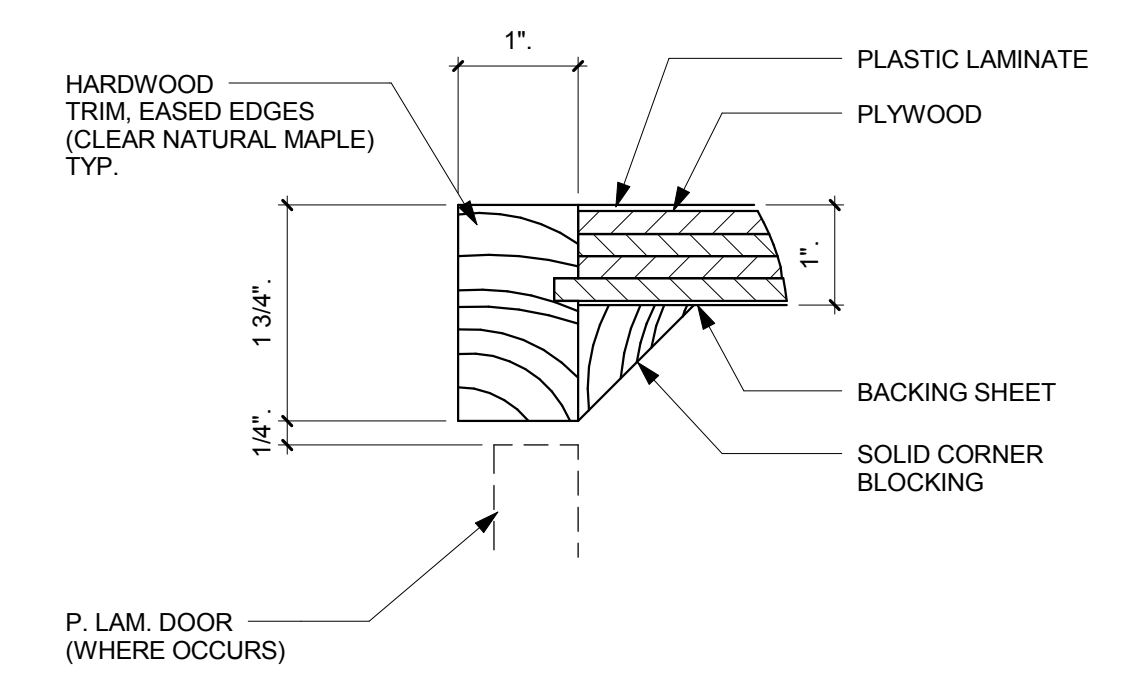
three inches = one foot
one and one half inches = one foot
one inch = one foot
three quarters inch = one foot
one half inch = one foot
three eighths inch = one foot
one quarter inch = one foot
one eighth inch = one foot
one sixteenth inch = one foot



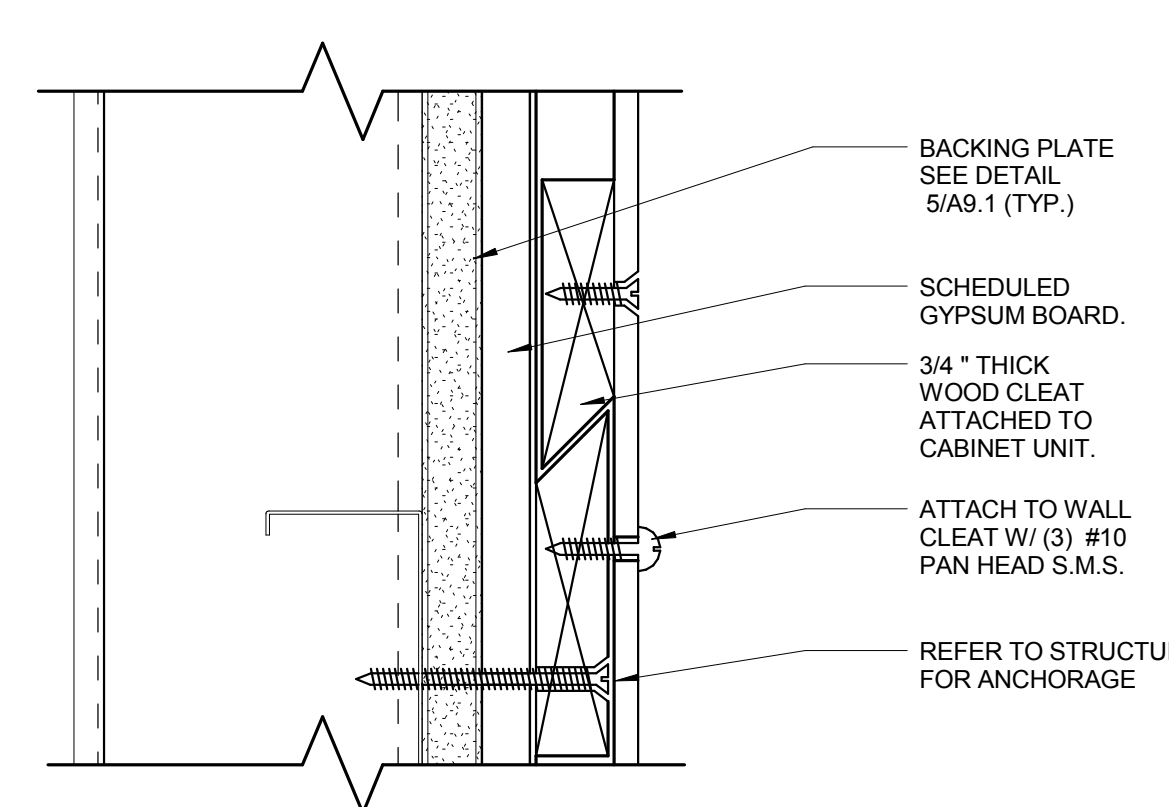
7 WALL SUPPORTED COUNTER
N.T.S.



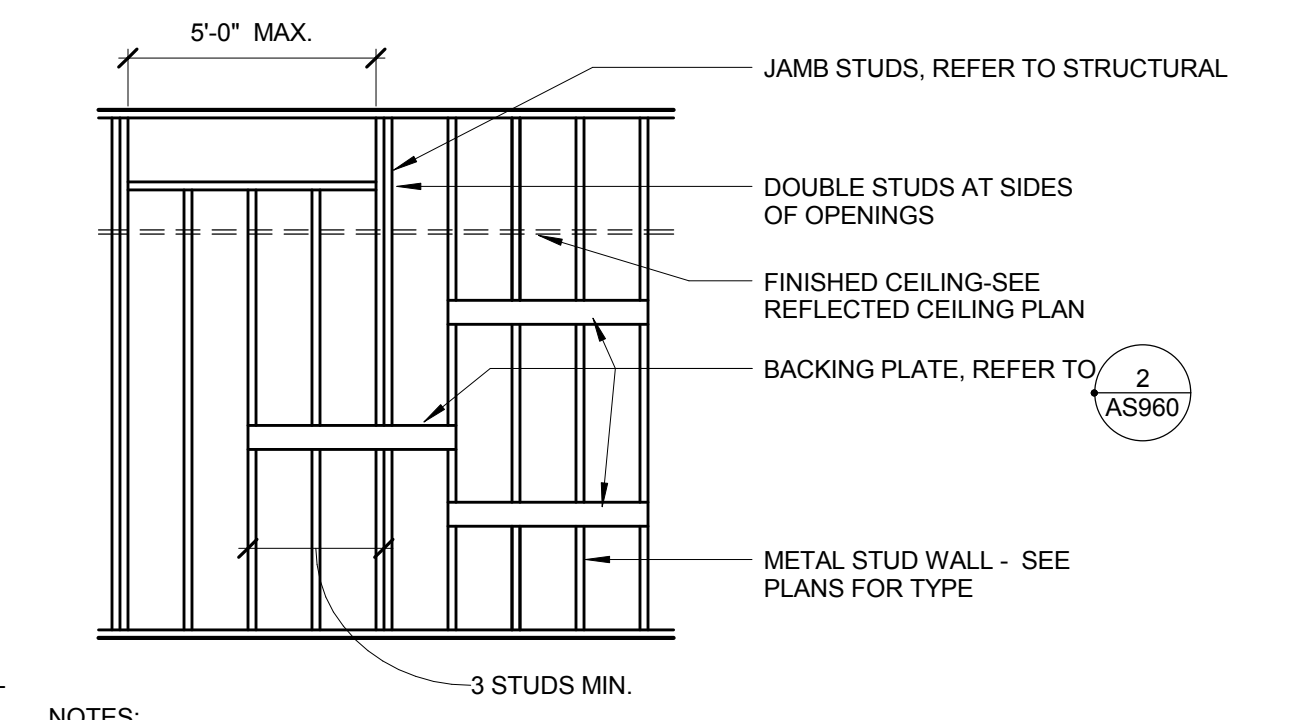
3 BACKING FOR CASEWORK
3/4" = 1'-0"



9 COUNTERTOP EDGE DETAIL
3" = 1'-0"

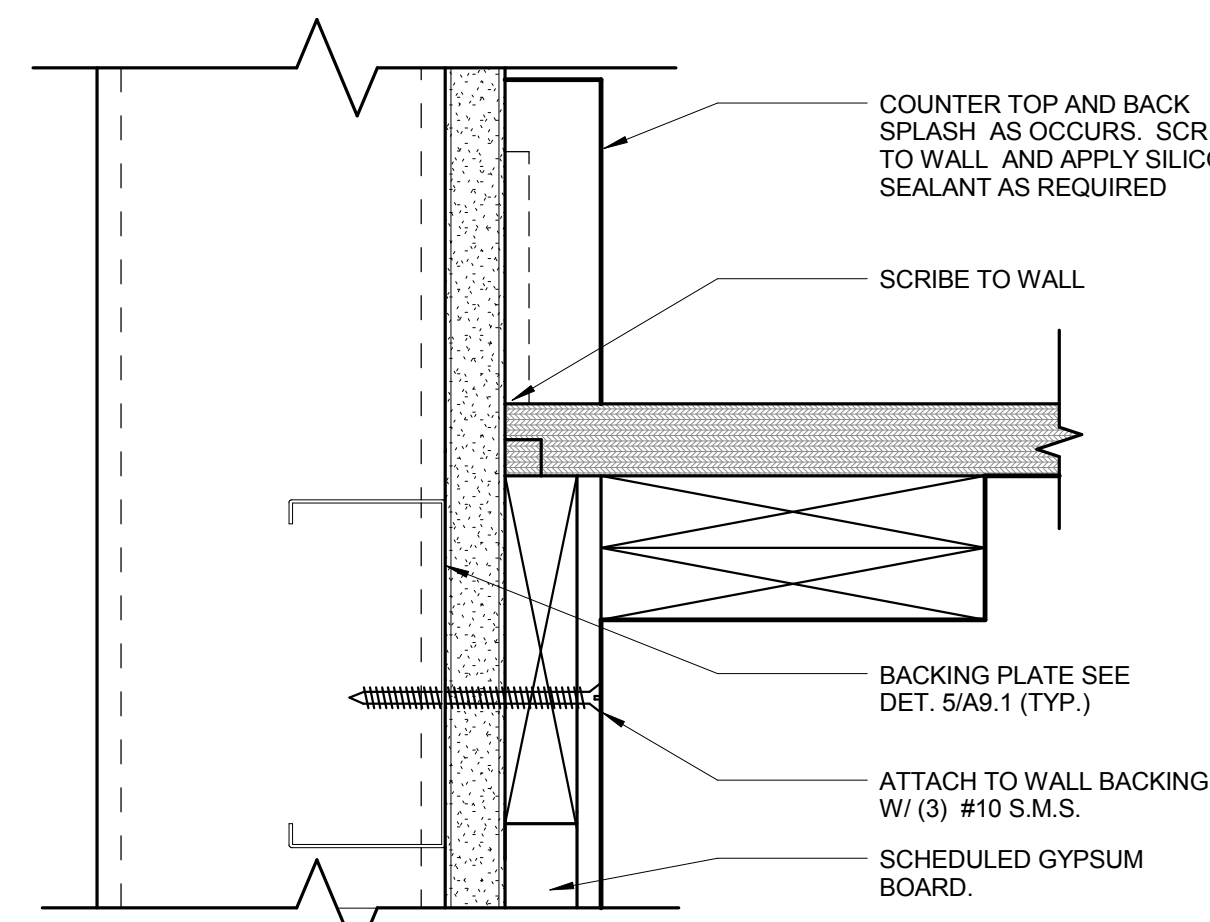


6 WALL CLEAT-UPPER CABINET
N.T.S.

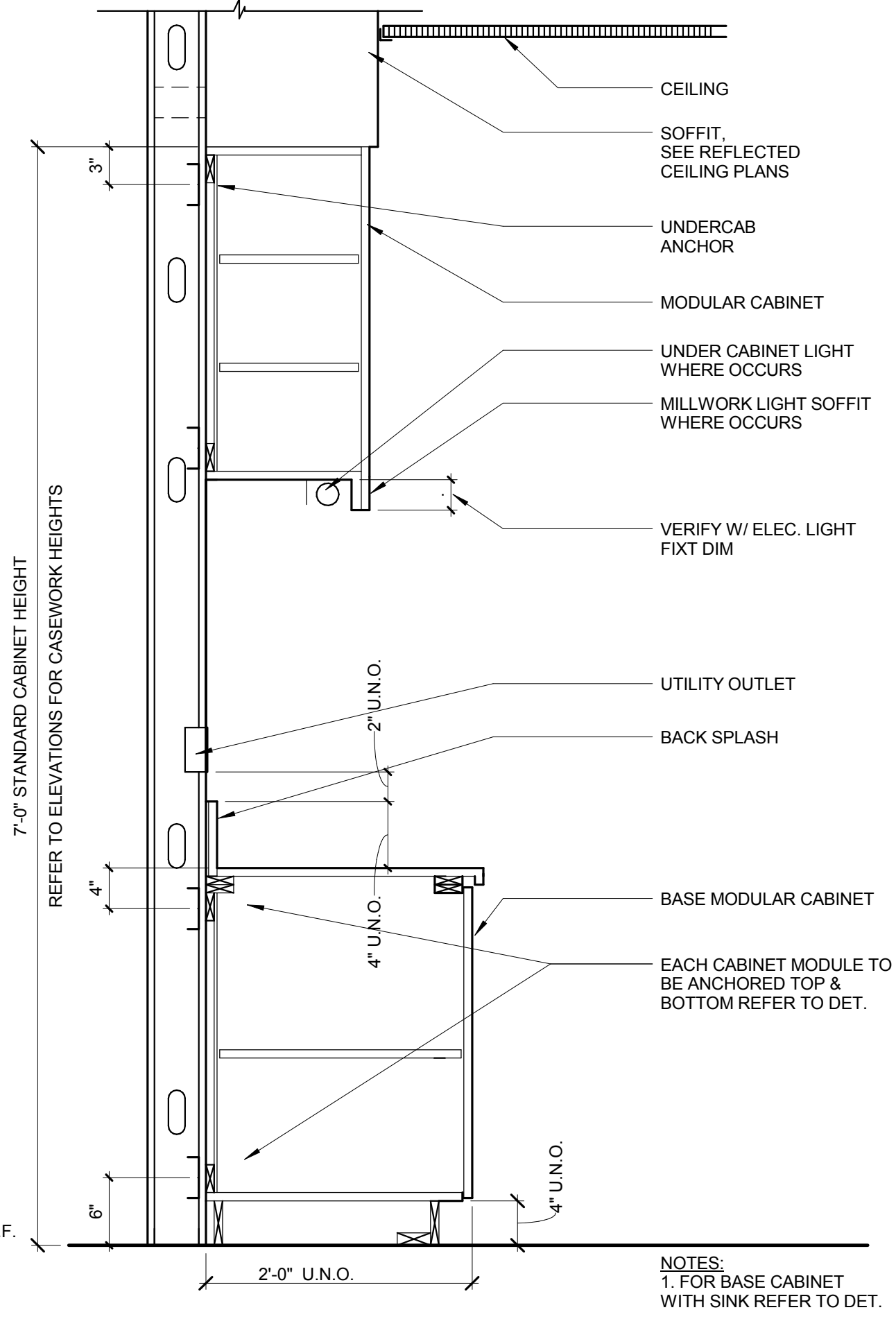


- NOTES:
- TYPE 'B' BACKING PLATE FOR UPPER WALL HUNG CABINETS-UP TO 2 SHELVES-, BASE CABINETS, FULL HEIGHT CABINETS, FILM VIEWING COUNTERS, WALL HUNG BENCHES, HANDRAILS, GUARDRAILS, CRAB BARS, WALL HUNG EQUIPMENT, ETC.
 - VERIFY LENGTH, HEIGHT, LOCATION OF BACKING PLATE AND NUMBER REQUIRED WITH MANUFACTURER OR ITEMS IN NOTE 1.
 - USE # 12 SELF TAPPING SHEET METAL SCREWS WHEN ATTACHING ITEMS TO BACKING PLATE.
 - WALL STUD FLANGES ARE CONTINUOUS.
 - UPPER CABINET UNIT GREATER THAN 400 LBS., NO OPENING ABOVE.

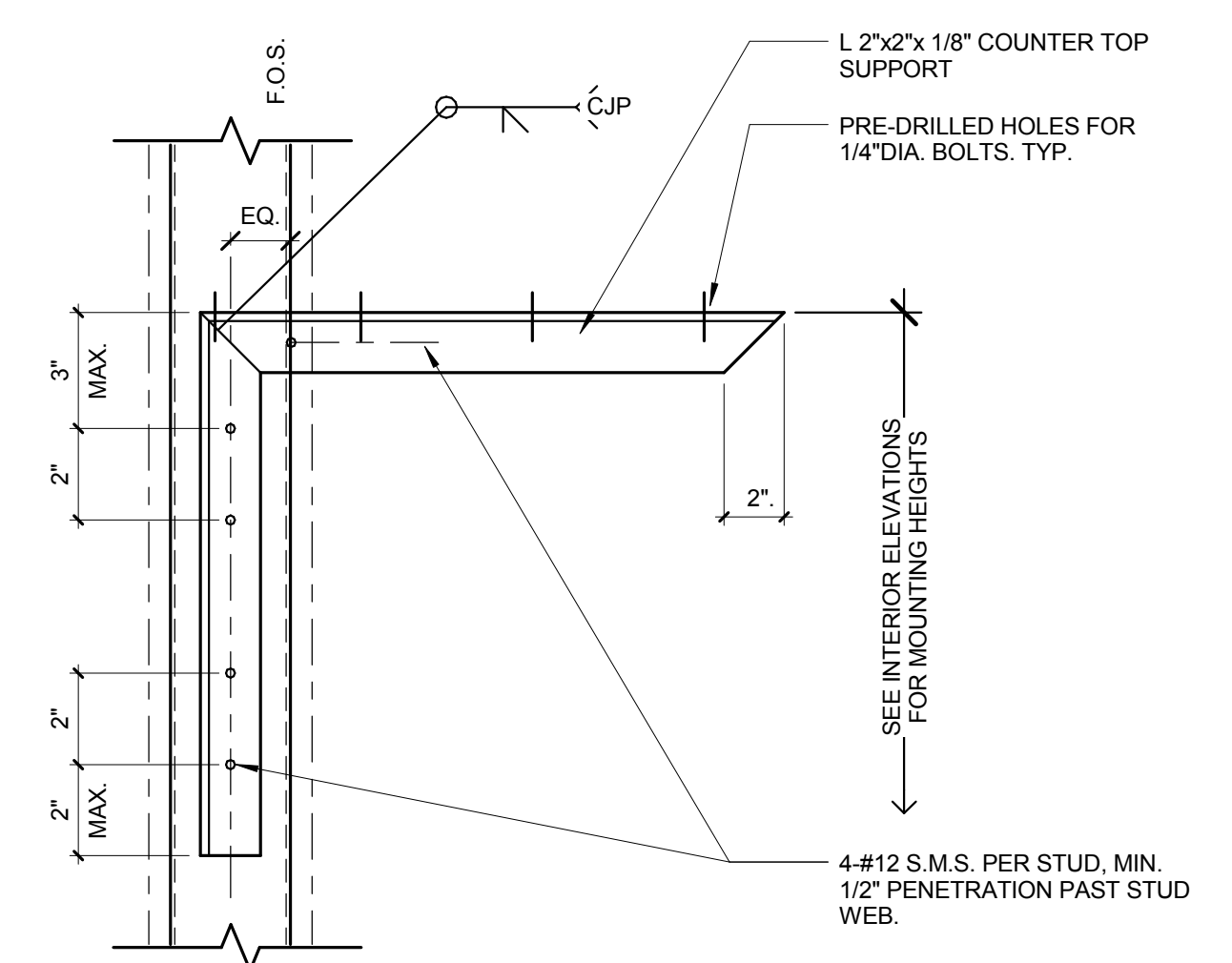
2 TYP. "B" BACKING PLATE
1/4" = 1'-0"



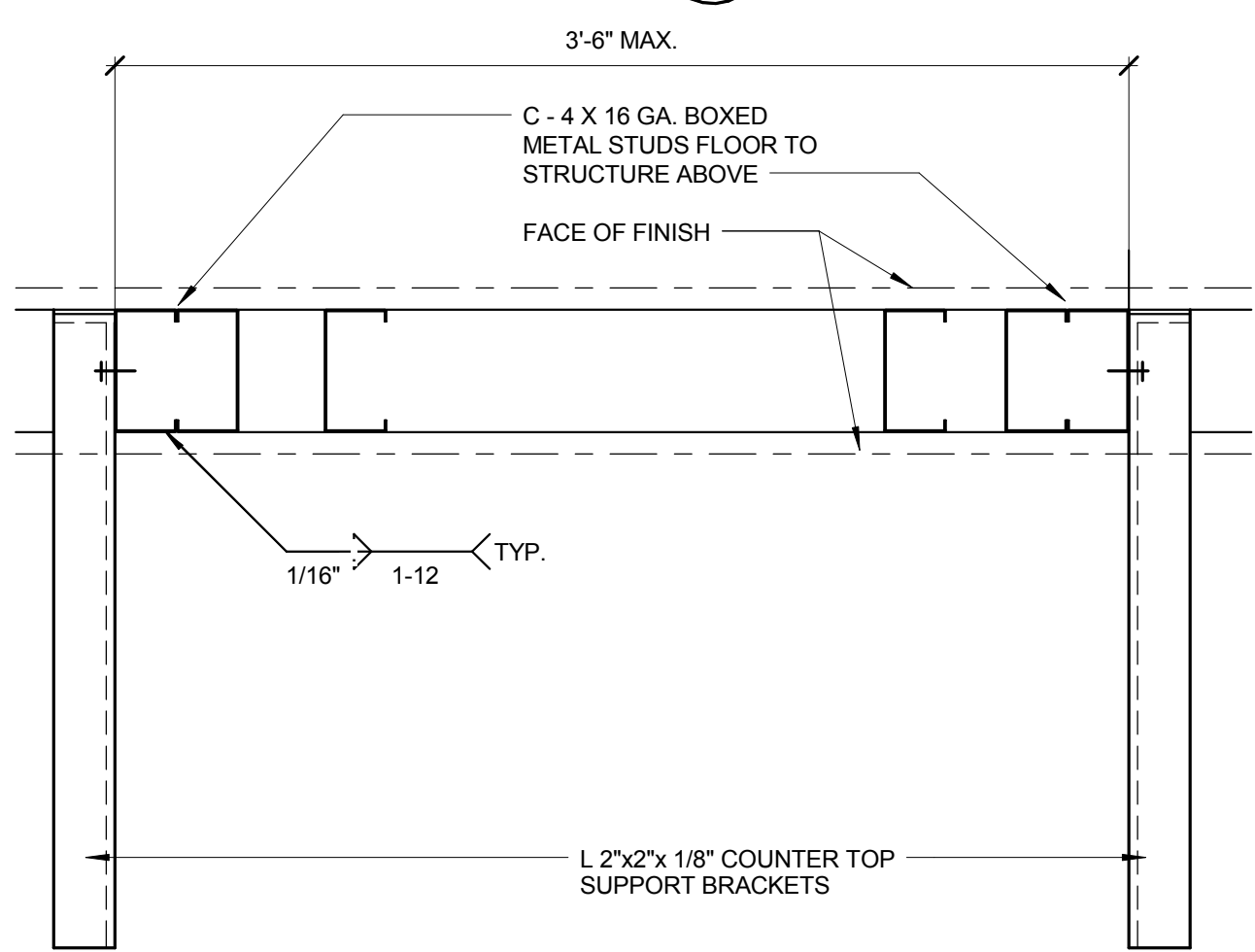
5 WALL CLEAT-BASE CABINET
6" = 1'-0"



1 TYPICAL CASEWORK ANCHORING
1" = 1'-0"



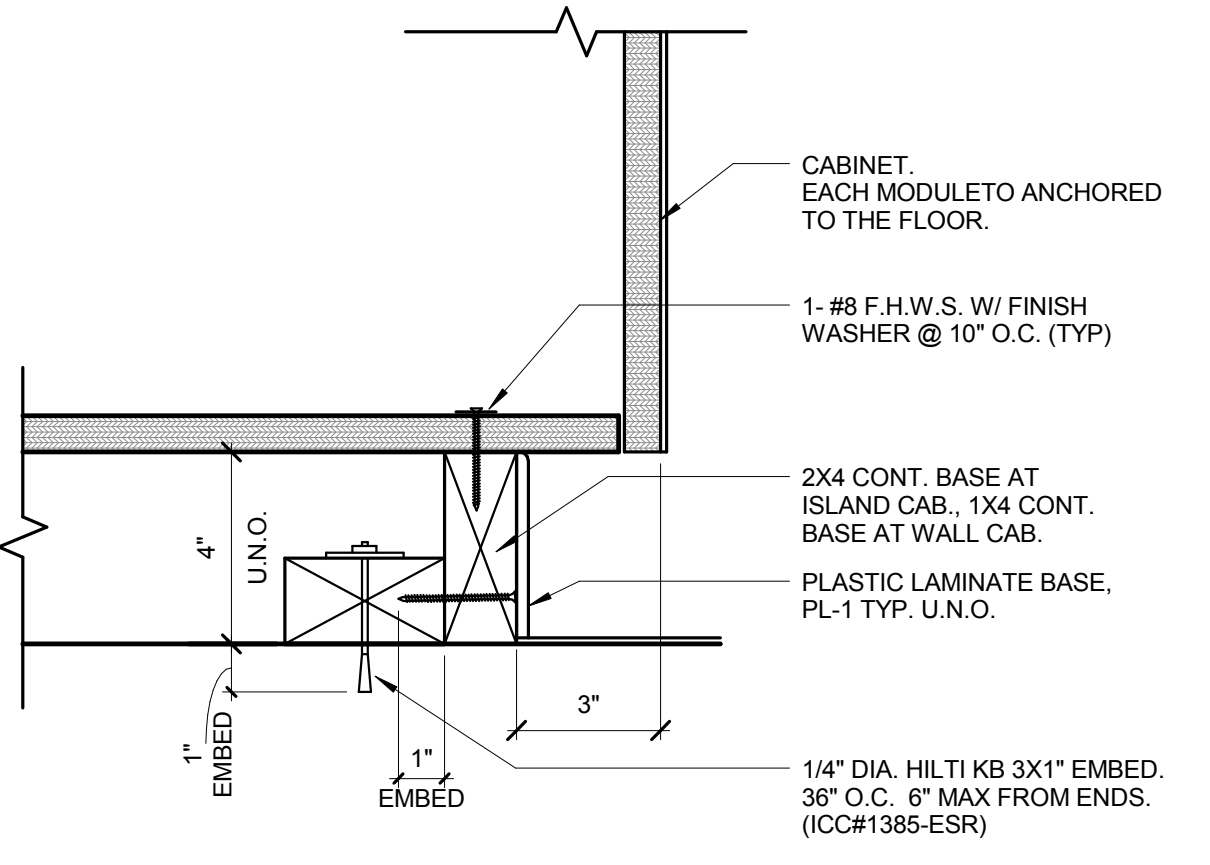
SECTION
A



PLAN VIEW

NOTE: VERIFY ALL DIMENSION WITH CASEWORK SHOP DRAWINGS PRIOR TO FABRICATION, CONSTR., OR INSTALLATION

8 COUNTER BRACKET DETAIL
3" = 1'-0"



4 CASEWORK ANCHORAGE
3" = 1'-0"

CONSULTANTS:			ARCHITECT/ENGINEERS: HMC Architects 1827 E. Fir Avenue / Studio 103 / Fresno, CA 93720 T 559 322 2444 / www.hmcarchitects.com HMC PROJECT #1393002-000	Drawing Title CASEWORK DETAILS - TYPICAL		Project Title Mental Health Psychosocial Rehab Recovery and Health Care for Homeless Veteran Center		Project Number 570-217	Office of Construction and Facilities Management:
				Approved: Project Director		Location 2615 E. CLINTON AVE, FRESNO, CA 93703		Building Number 37	
						Date 08/11/2014	Checked Checker	Drawn Author	Dwg. 72 of 197