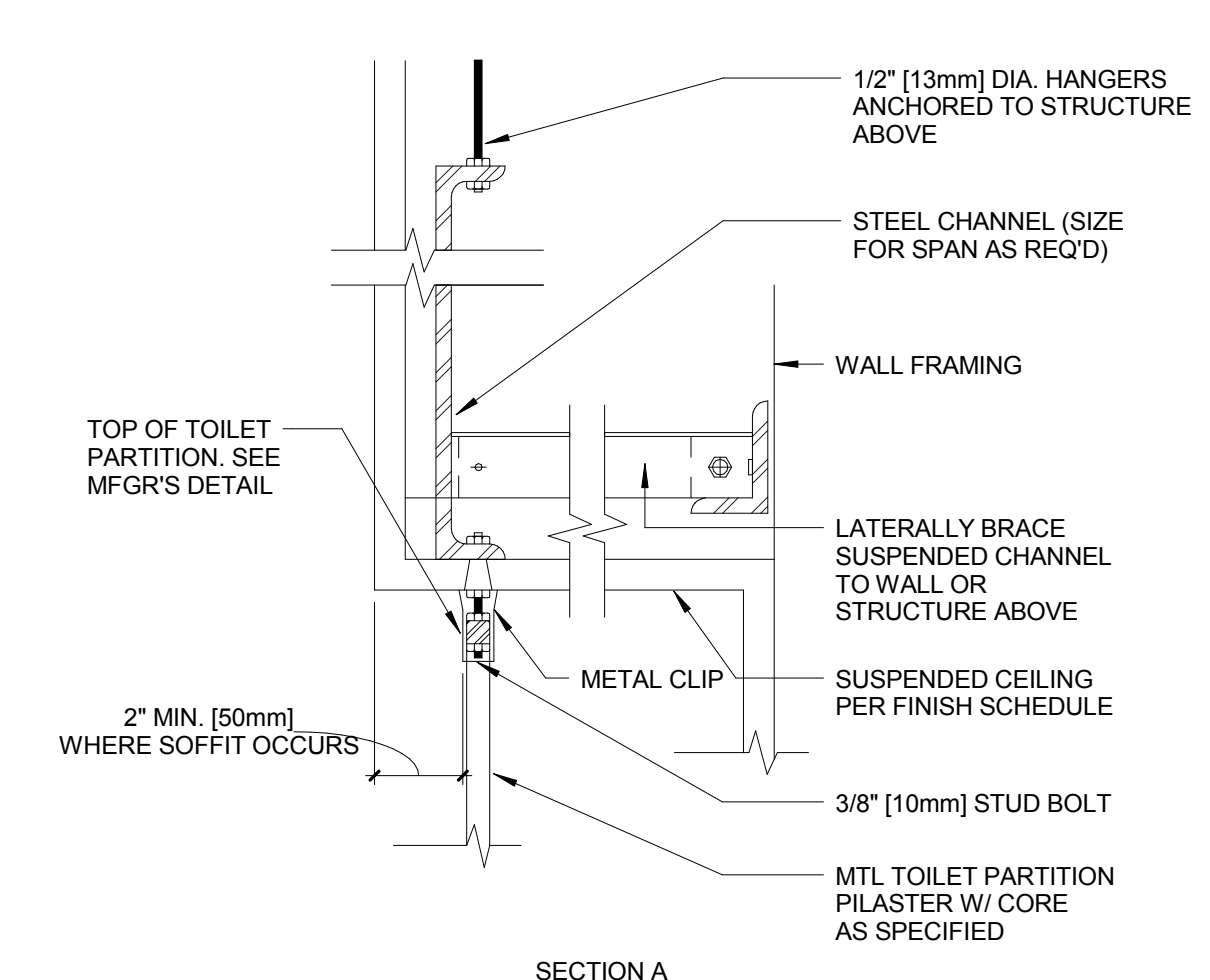
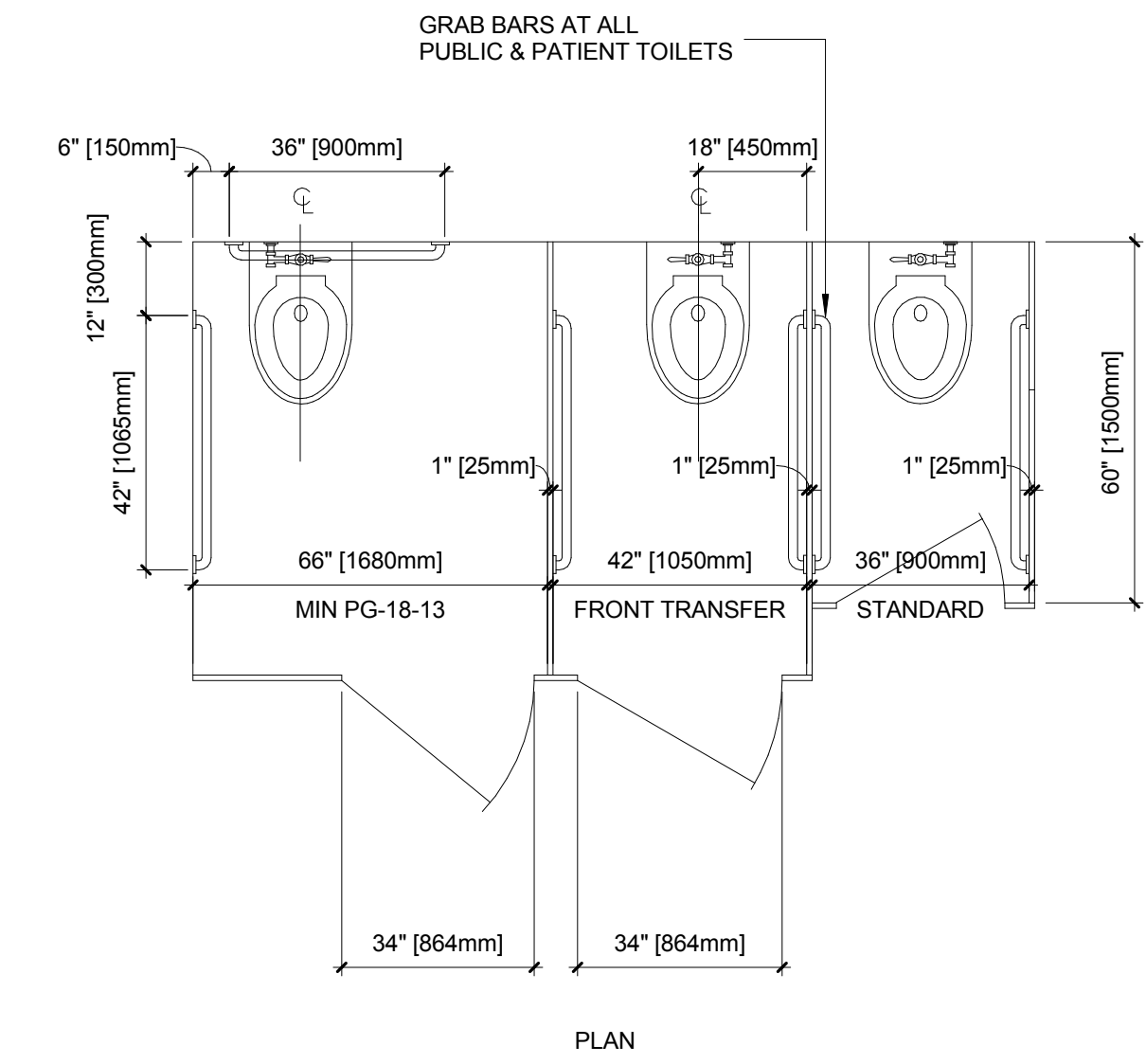
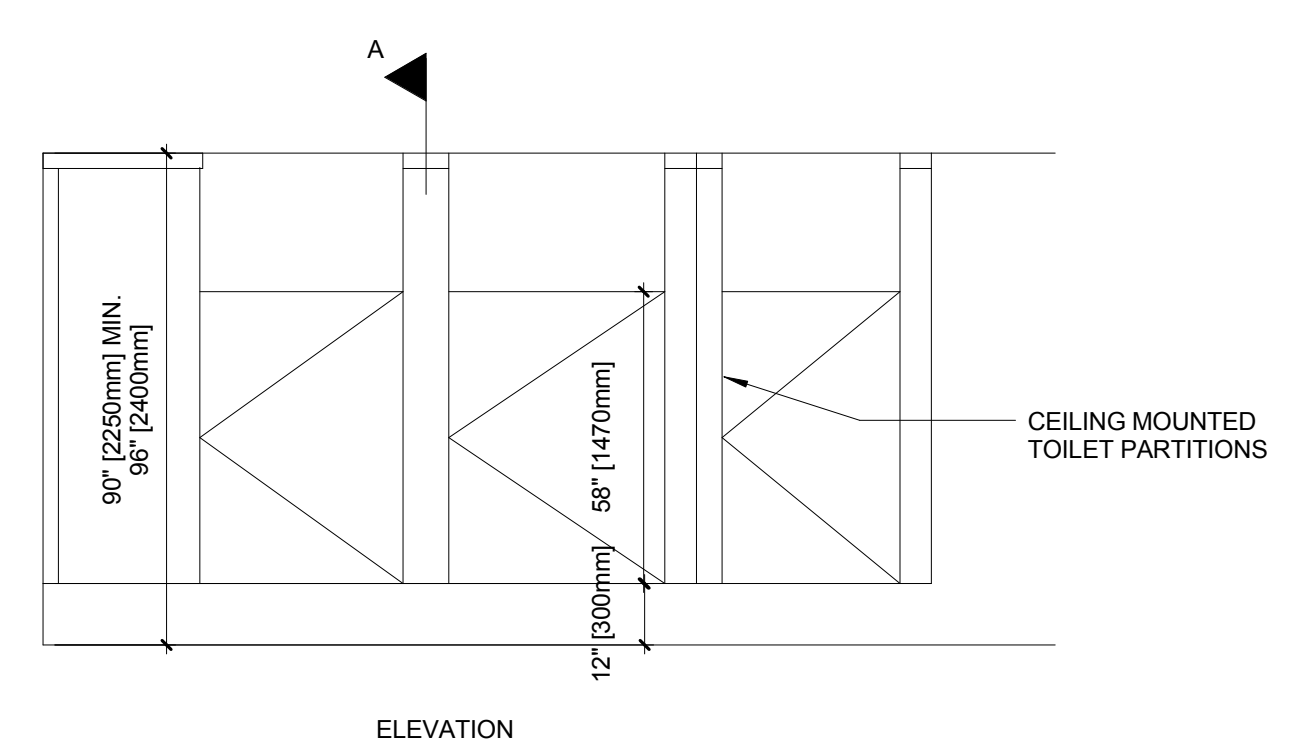


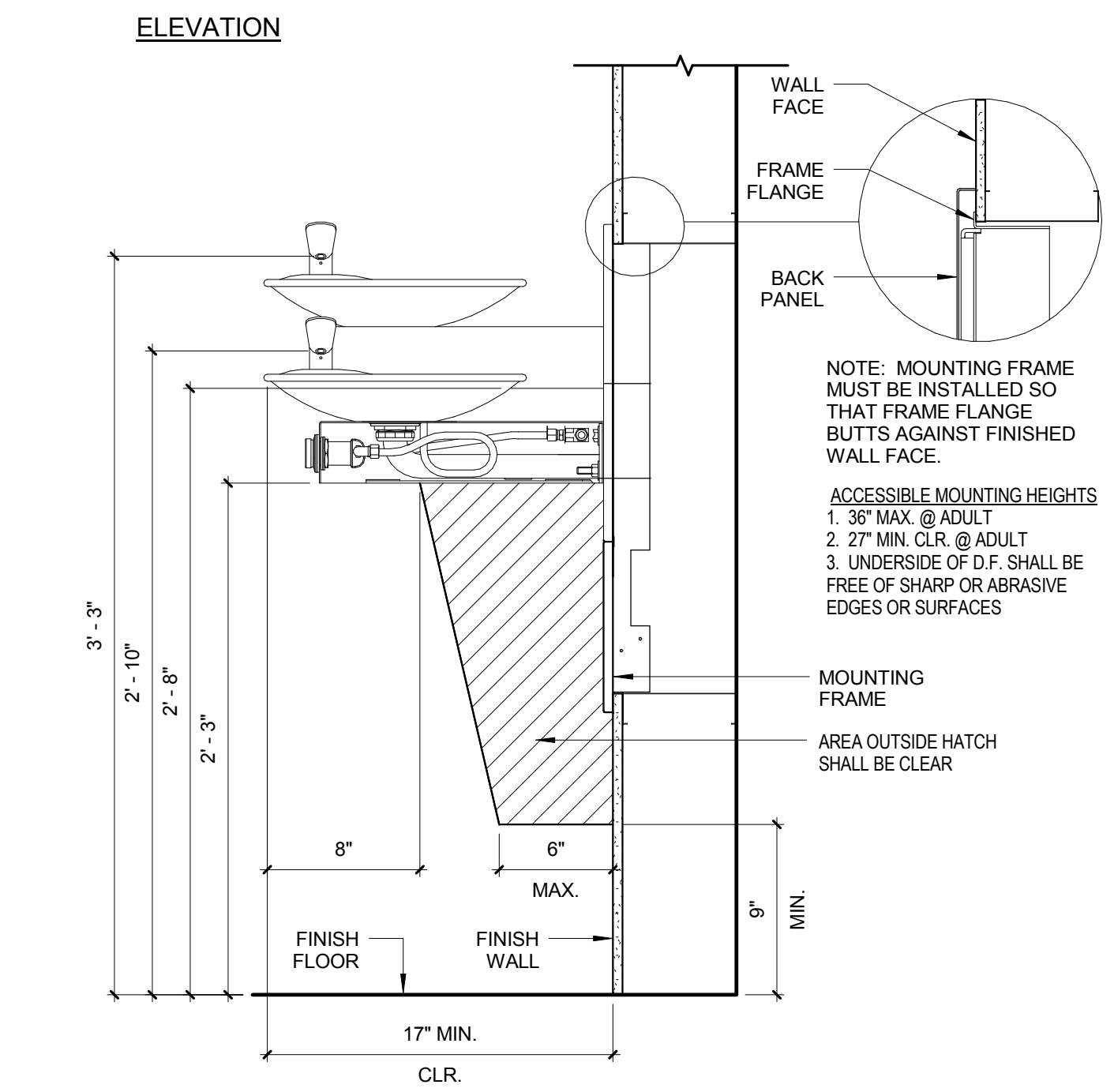
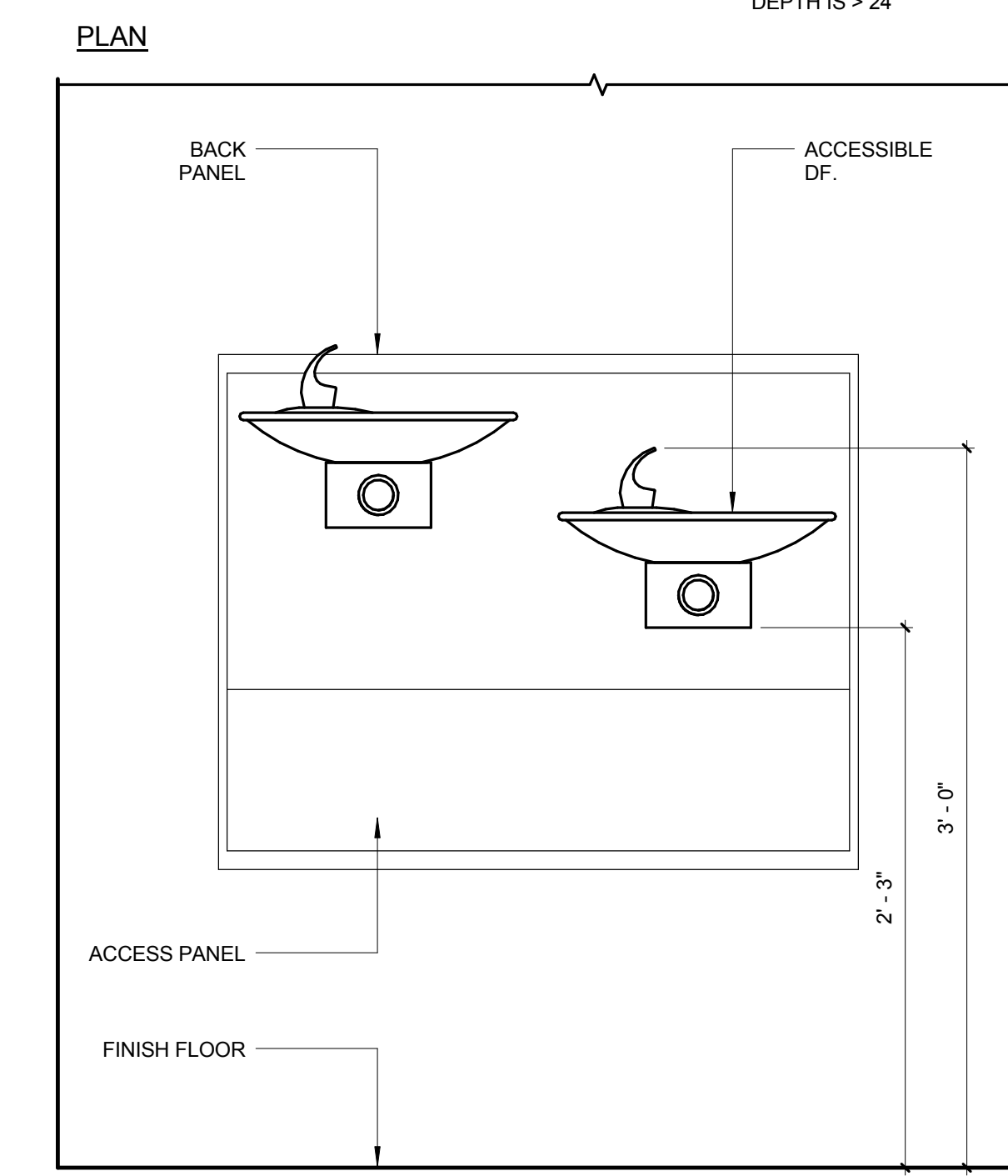
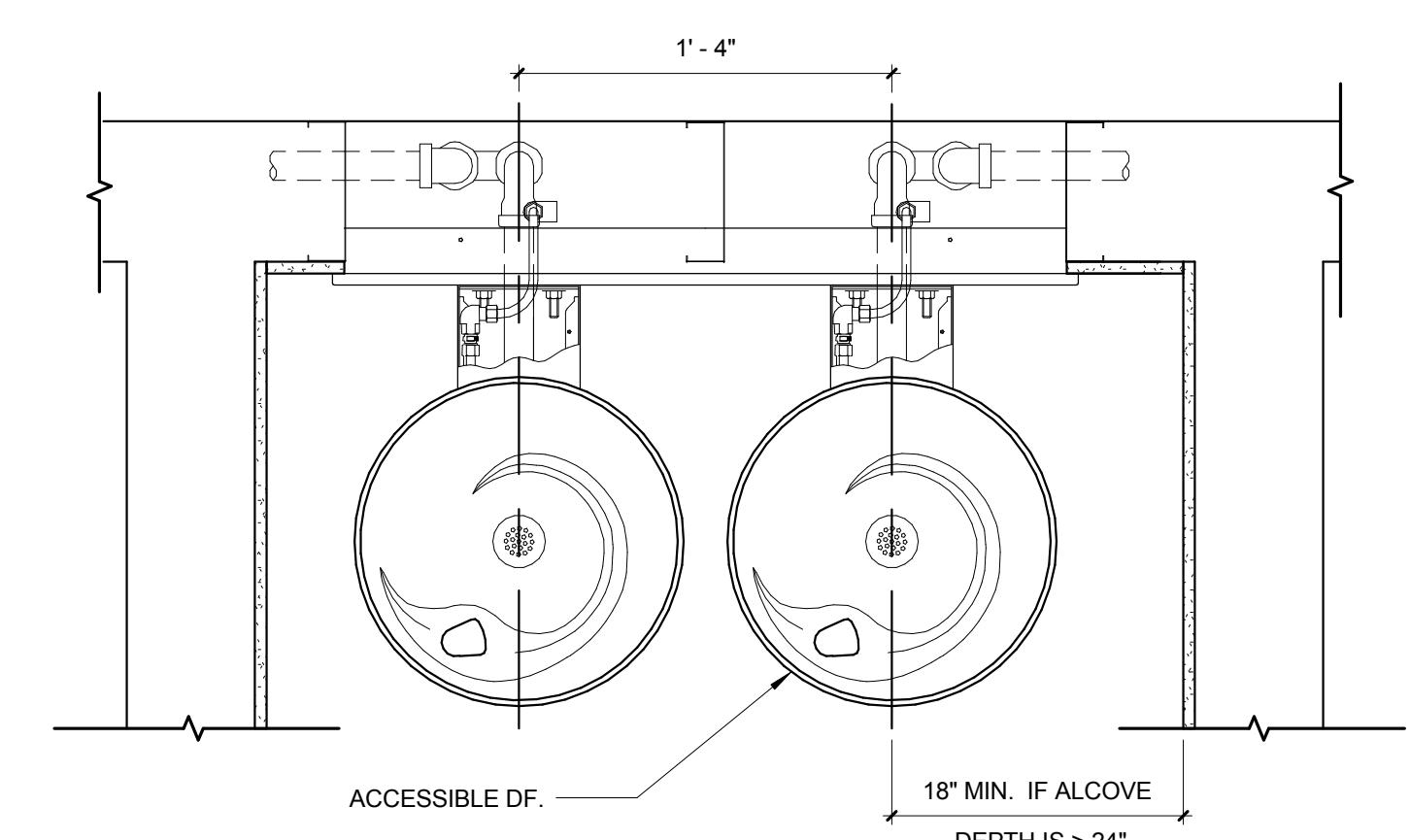
three inches = one foot
one and one half inches = one foot
one inch = one foot
one quarter inch = one foot
one half inch = one foot
three eighths inch = one foot
one eighth inch = one foot
one quarter inch = one foot
one eighth inch = one foot
one eighth inch = one foot



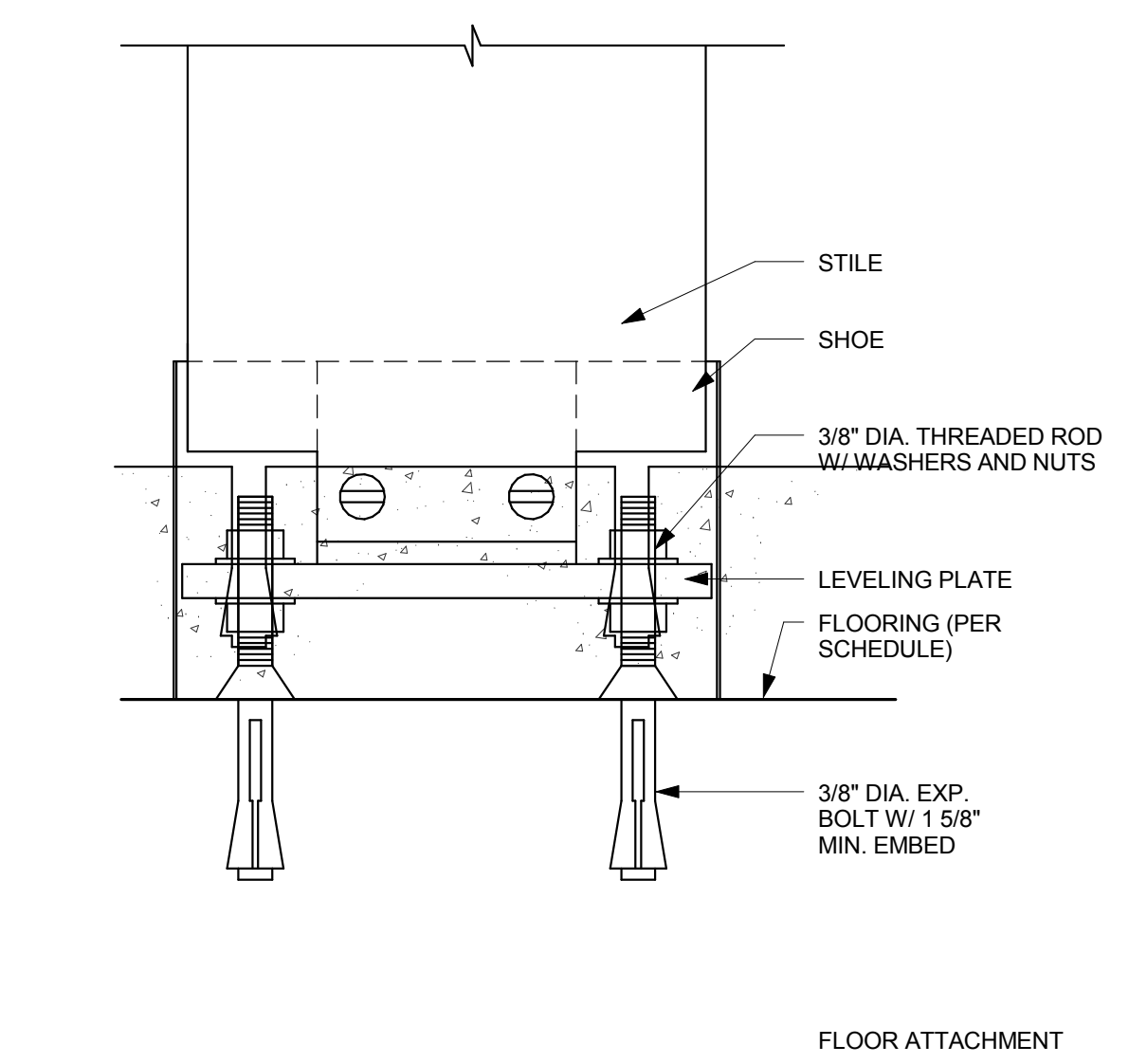
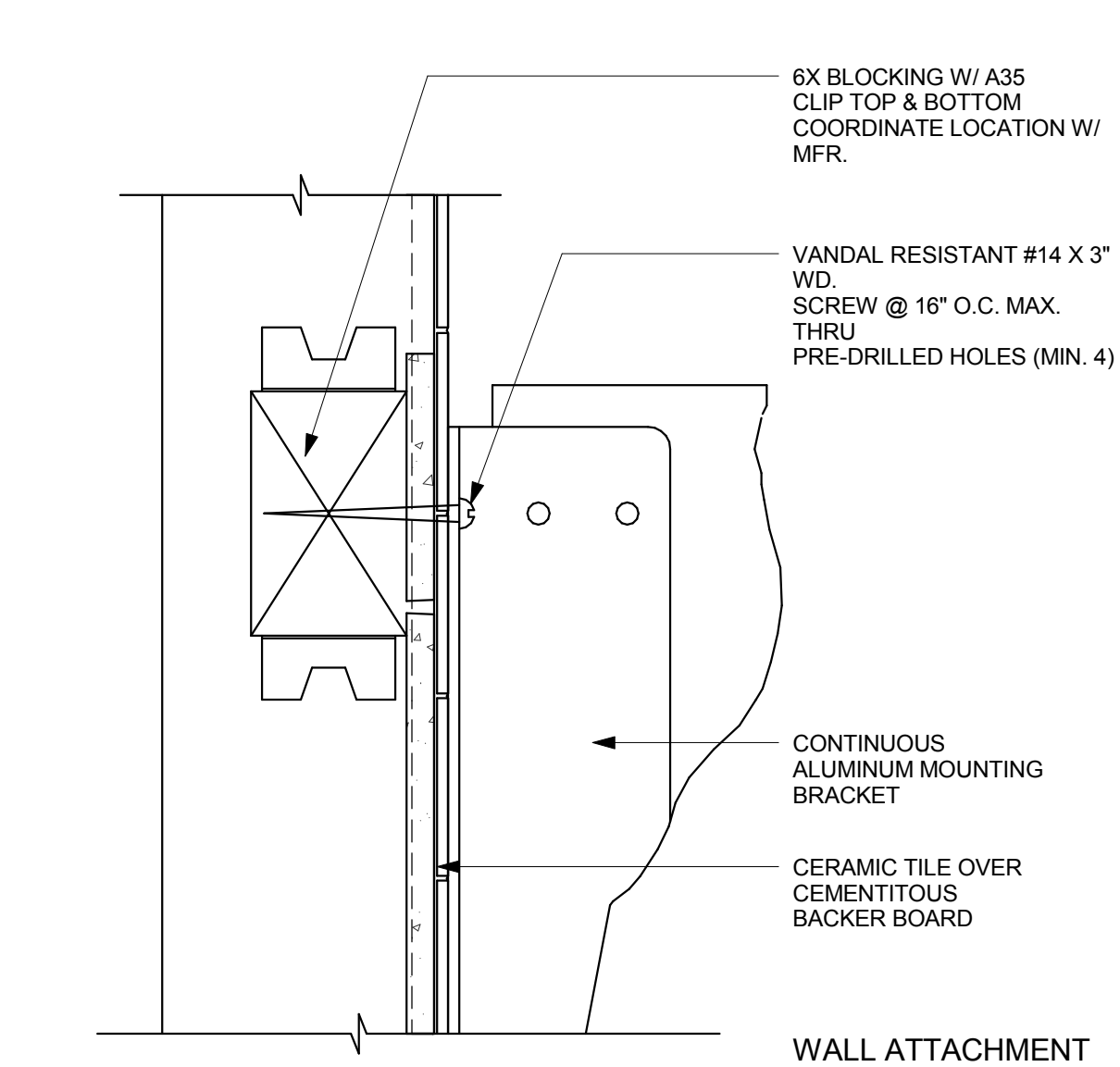
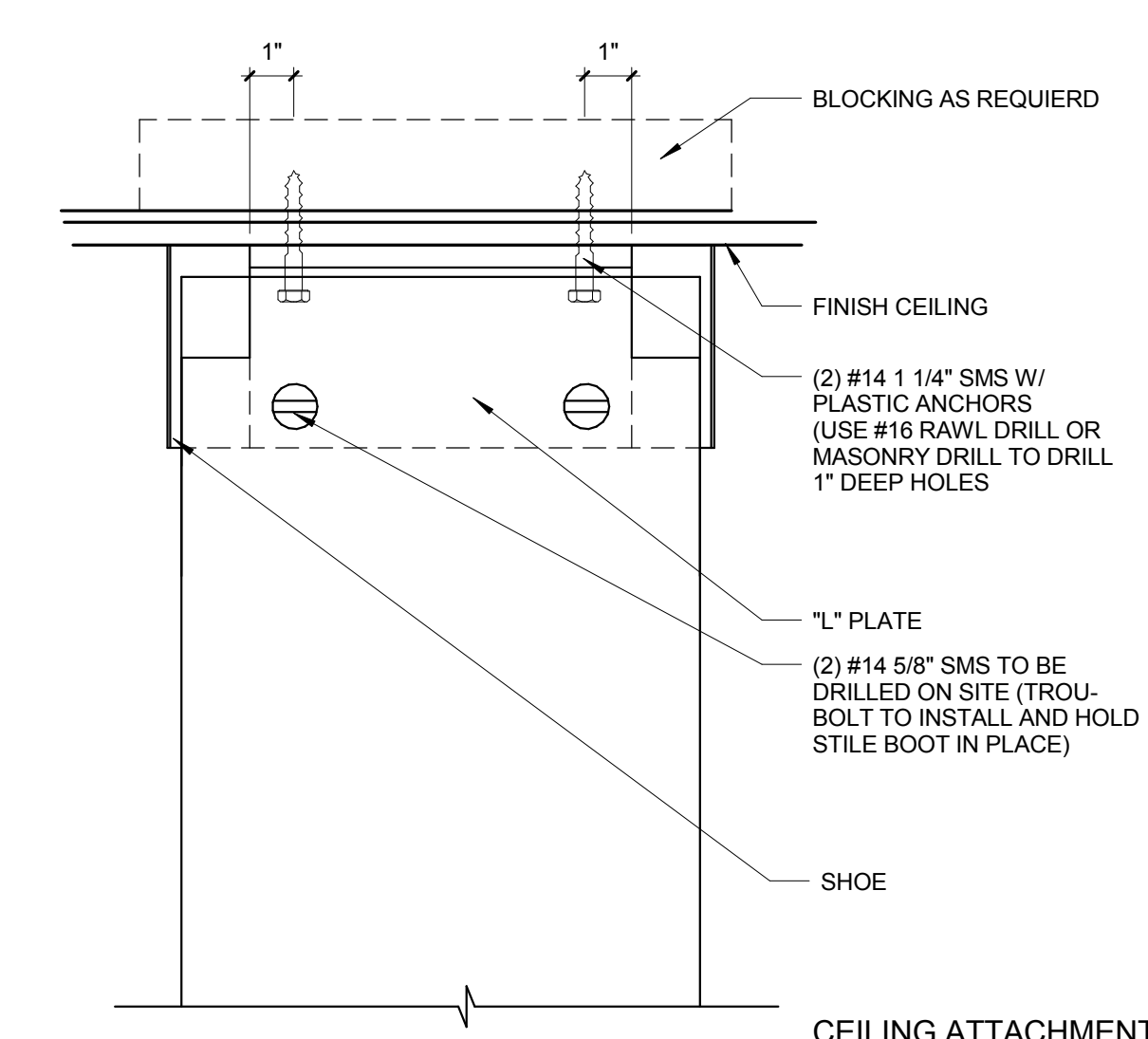
NOTES:
A/E SHALL LOCATE GRAB BARS AND TOILET ACCESSORIES IN ACCORDANCE WITH CHAPTER 6 OF THE ADA-ABA ACCESSIBILITY STANDARD.
VA BARRIER FREE DESIGN GUIDE PG-18-13 SPECIFIES LARGER WHEELCHAIR ACCESSIBLE STALLS AND FRONT TRANSFER (AMBULATORY ACCESSIBLE) STALLS THAN REQUIRED BY ADA-ABAS. GRAB BARS ARE REQUIRED IN ALL TOILET STALLS, NOT JUST ACCESSIBLE STALLS.



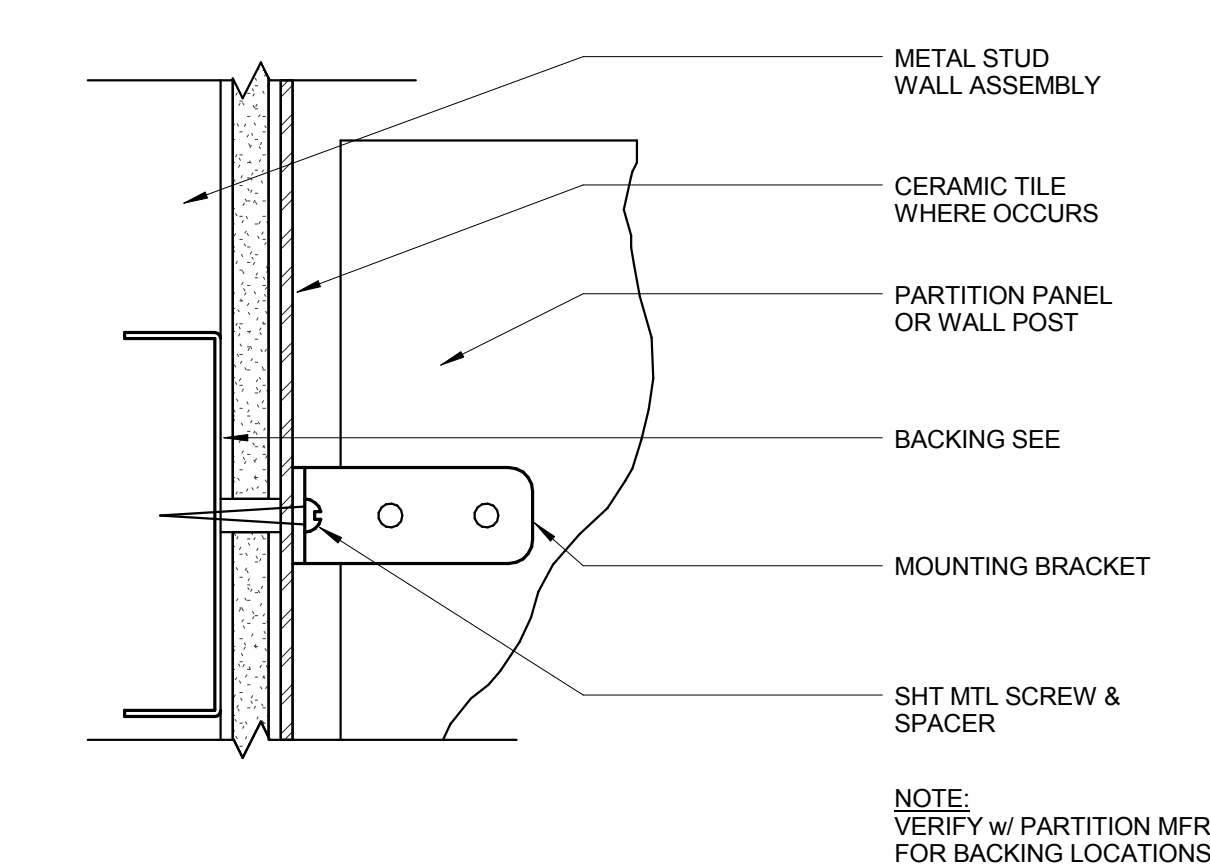
10 102800- TYP TOILET STALL DETAIL
1/2" = 1'-0"



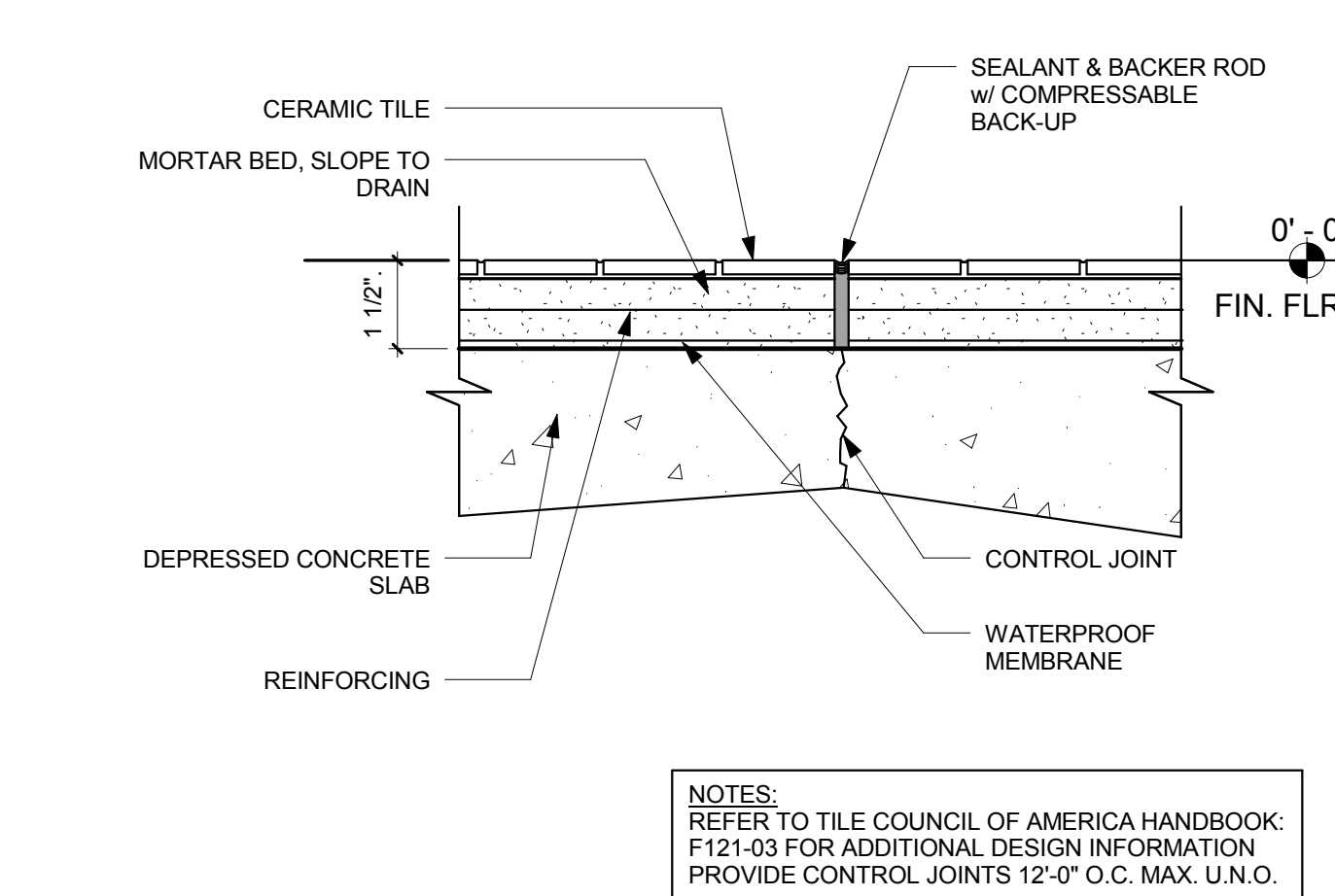
9 DRINKING FOUNTAIN
1 1/2" = 1'-0"



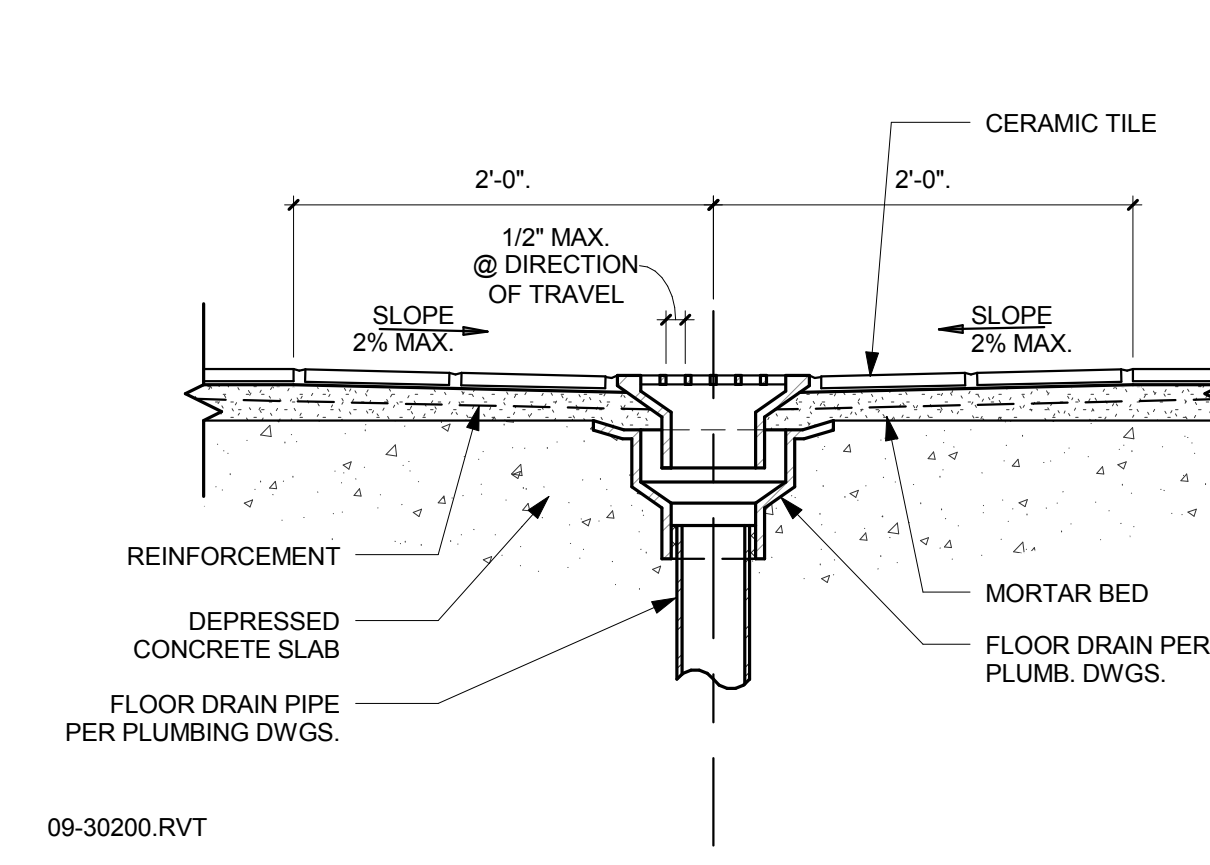
8 CEILING MOUNTED TOILET PARTITION1
3" = 1'-0"



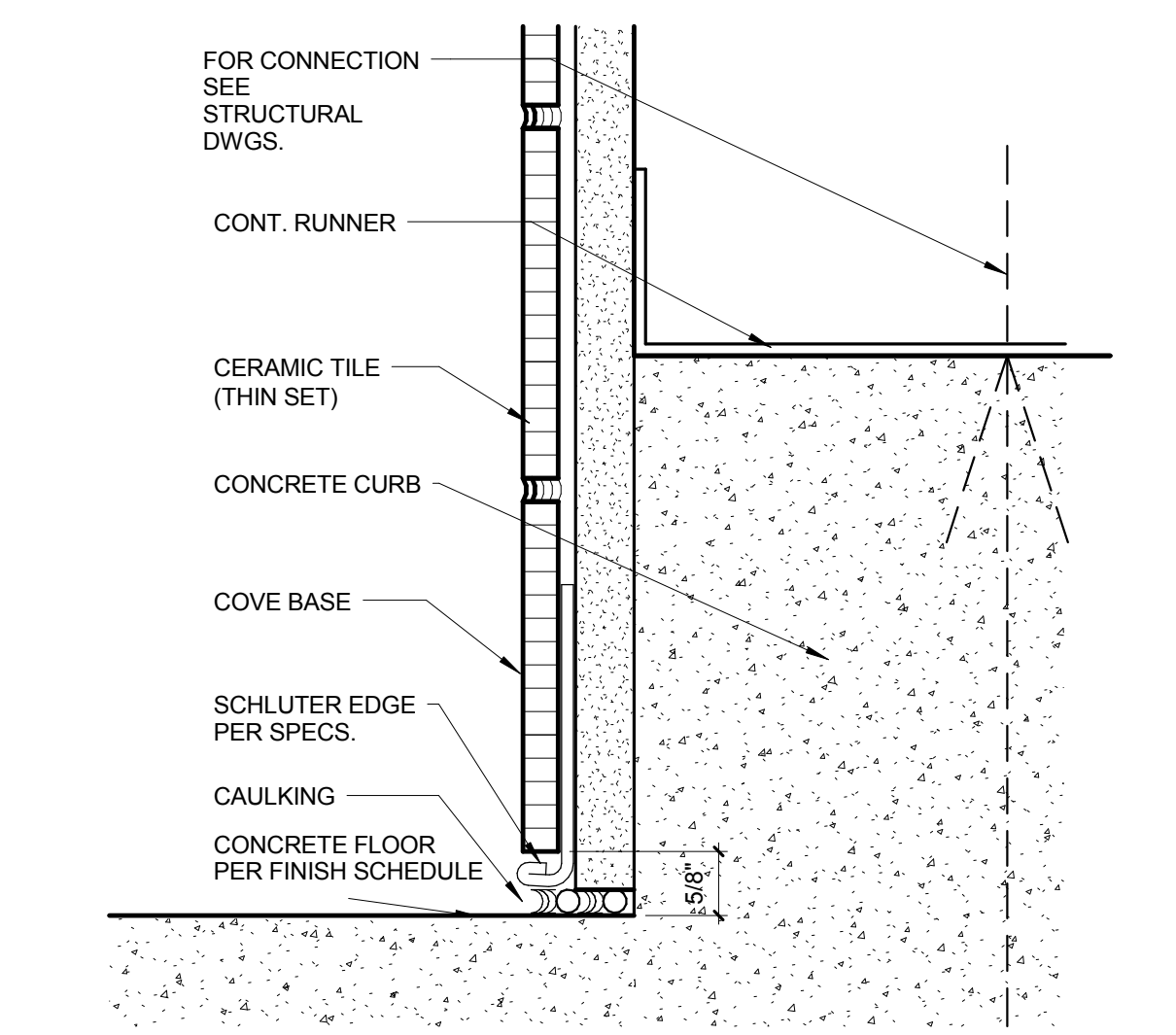
7 URINAL PARTITION ANCHORAGE
6" = 1'-0"



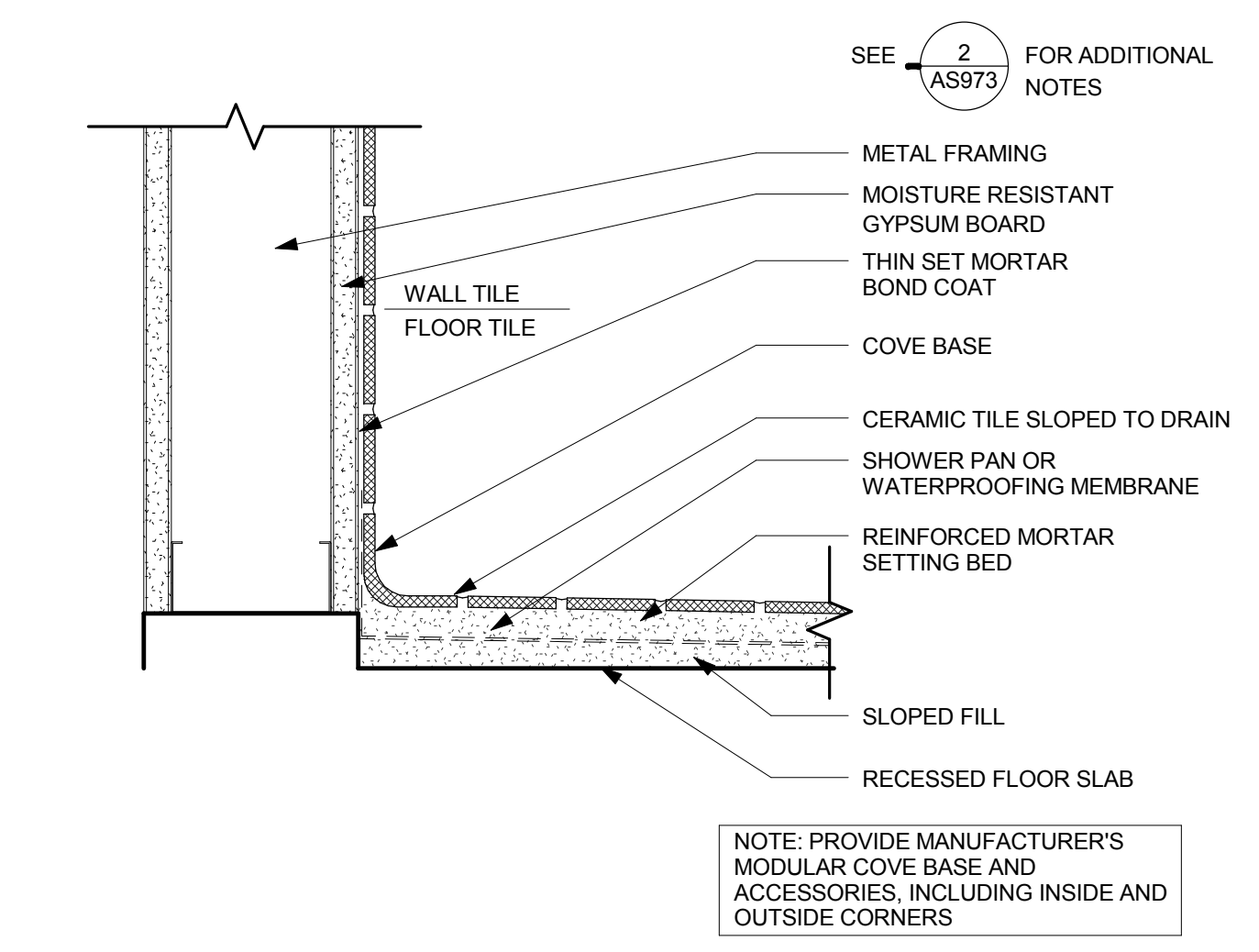
6 CERAMIC TILE @ FLOOR
3" = 1'-0"



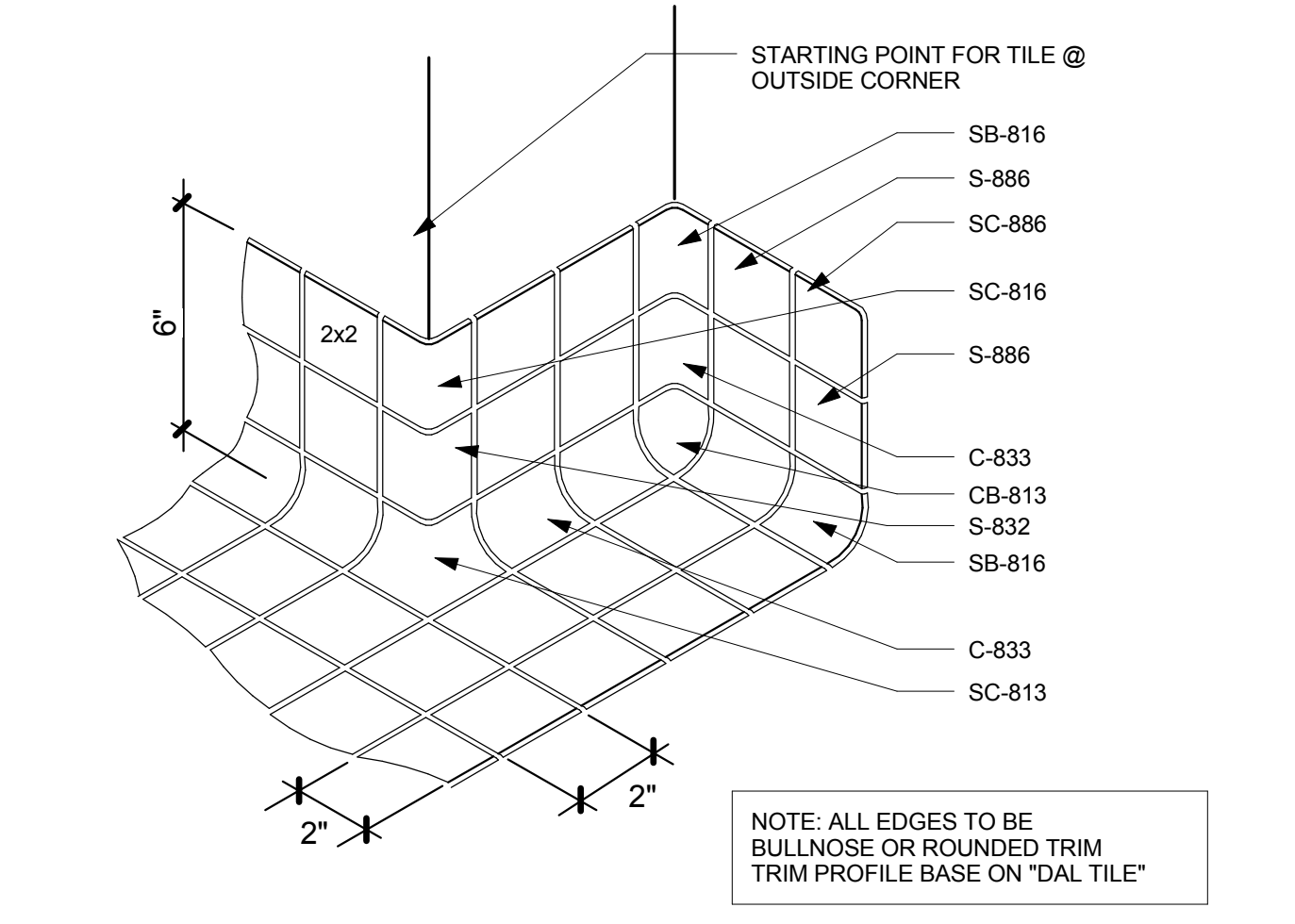
5 FLOOR DRAIN AT TILE
1 1/2" = 1'-0"



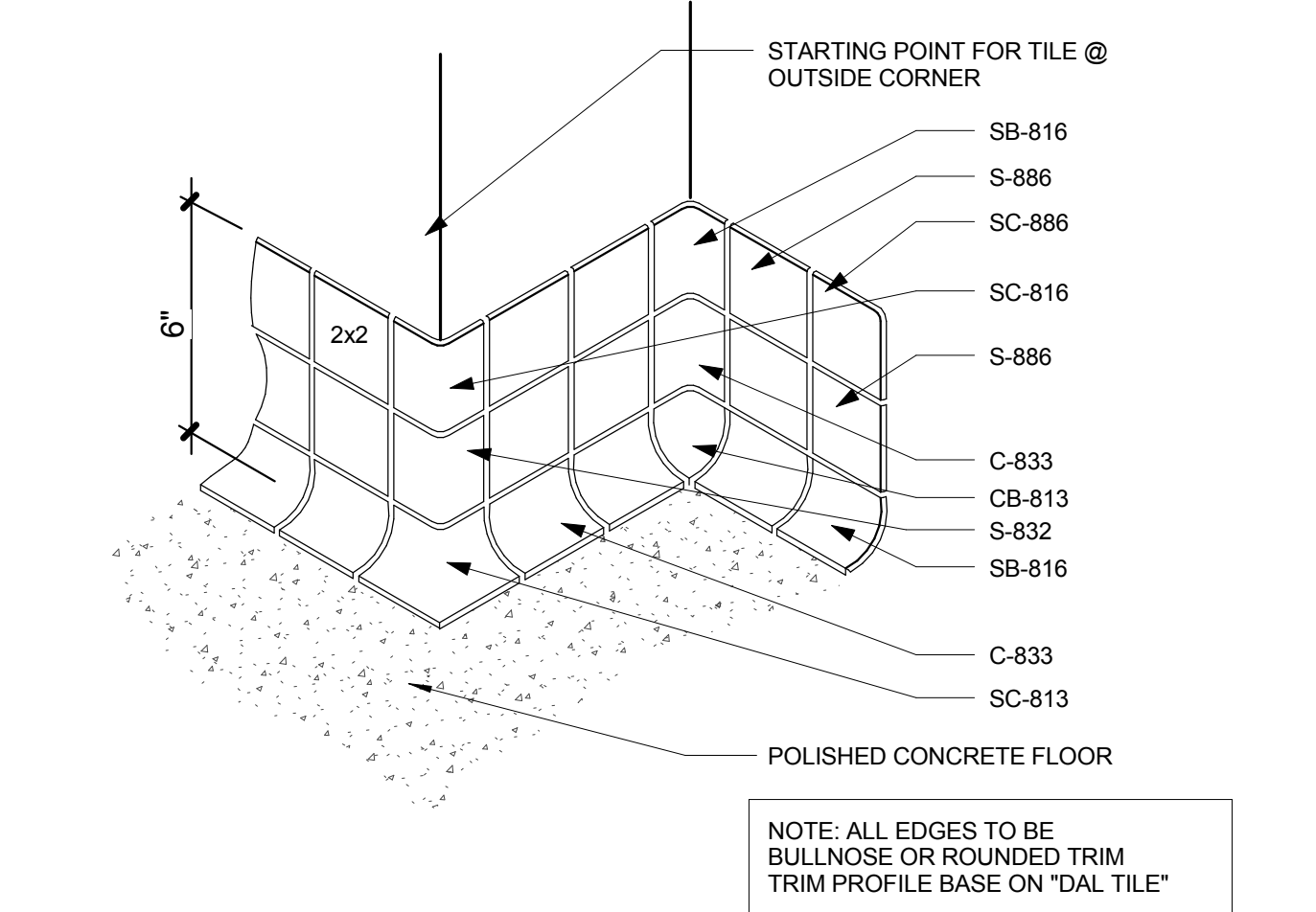
4 CERAMIC TILE - BASE AT CONCRETE FLOOR1
6" = 1'-0"



3 CERAMIC TILE - BASE @ SHOWER1
3" = 1'-0"



2 CERAMIC TILE - COVE UNIVERSAL TRIM @ TILE FL
3" = 1'-0"



1 CERAMIC TILE - COVE BASE UNIVERSAL TRIM @ CONC. FL
3" = 1'-0"

CONSULTANTS:			ARCHITECT/ENGINEERS: HMC Architects 1827 E. Fir Avenue / Studio 103 / Fresno, CA 93720 T 559 322 2444 / www.hmcarchitects.com HMC PROJECT #1393002-000		Drawing Title TOILET ROOM DETAILS	Project Title Mental Health Psychosocial Rehab Recovery and Health Care for Homeless Veteran Center		Project Number 570-217		Office of Construction and Facilities Management:
					Approved: Project Director	Location 2615 E. CLINTON AVE, FRESNO, CA 93703		Building Number 37		
						Date 08/11/2014	Checked Checker	Drawn Author	Drawing Number AS973 Dwg. 76 of 197	