

A

B

C

D

E

F

A

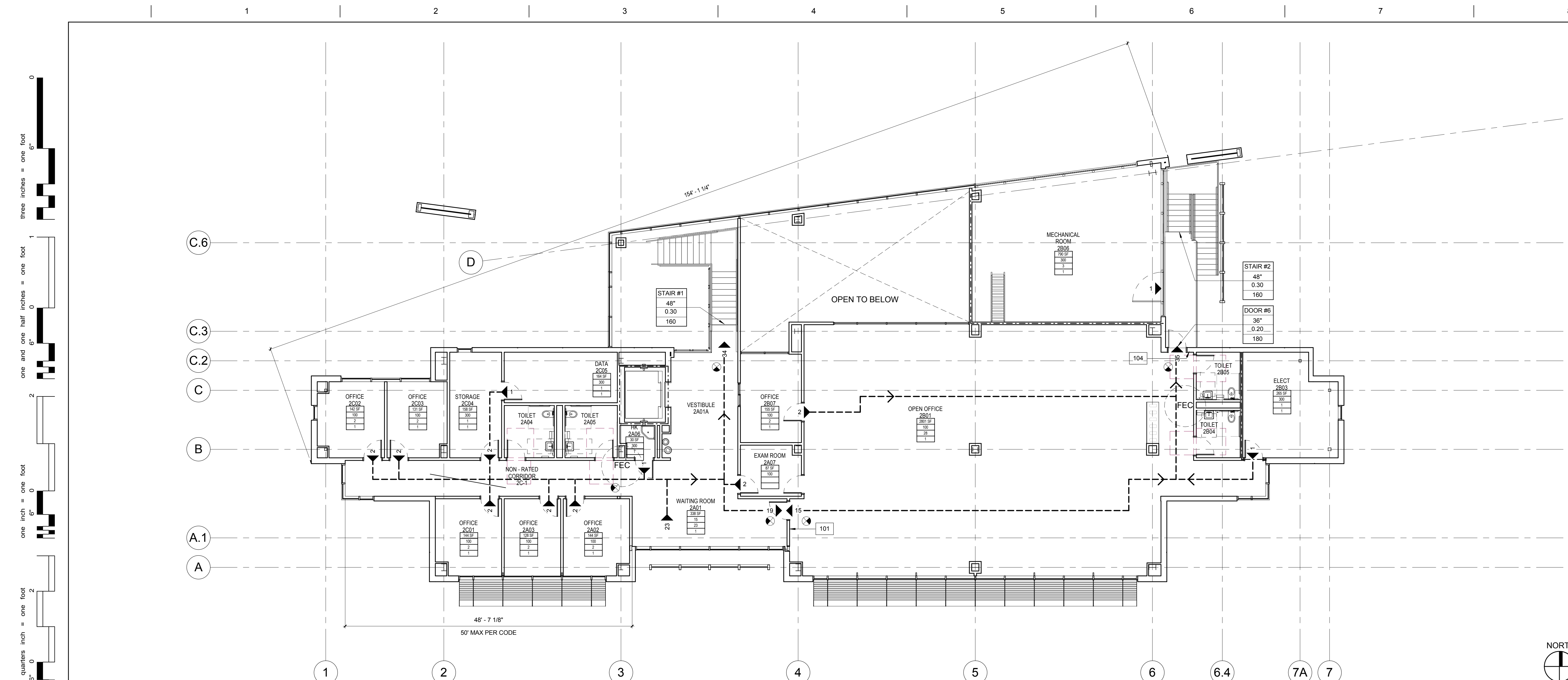
B

C

D

E

F



GENERAL NOTES

- REFER TO SHEET G001 FOR TYPICAL SYMBOLS AND ABBREVIATIONS
- AT ANY TIME THE BUILDING IS OCCUPIED, THE MEANS OF EGRESS SHALL BE ILLUMINATED AT AN INTENSITY OF NOT LESS THAN 1 FOOT-CANDLE AT FLOOR LEVEL

ROOM EXITING INFORMATION

ROOM NAME: 101
AREA (SQ FT): 101
OCCUPANT LOAD FACTOR (REFER TO TABLE 1004.1.1): 0.30
OCCUPANT LOAD (AREA DIVIDED BY LOAD FACTOR): 337
NUMBER OF EXITS REQUIRED (REFER TO TABLE 1015.1): 2

ROOMS NOT SHOWING LOAD ARE NOT NORMALLY OCCUPIED AND ARE ACCESSORY SPACES

EXITING REQUIREMENTS

TRAVEL DISTANCE	300 FEET
COMMON PATH OF EGRESS TRAVEL	100 FEET (IBC 1013.3)
EXIT PASSAGEWAYS	44" MIN.
CORRIDOR WIDTH	44" MIN.
DEADEND CORRIDOR	50 FEET
STAIRWAY WIDTH	44" MIN.
NUMBER OF EXITS	2
DISTANCE BETWEEN EXITS	1/3 DIAGONAL DISTANCE= 51'-4" MIN.
EGRESS WIDTH IN INCHES PER PERSON EXITING	0.3 STAIRWAYS
AREA OF REFUGE	0.2 OTHER COMPONENTS
	NOT REQUIRED (IBC 1007.3)

EGRESS WIDTH CALCULATION PER IBC

EXIT DOOR NO.	NUMBER OF OCCUPANTS	DOOR INCHES PER PERSON (WITH SPRINKLER SYSTEM IBC 1005.1)	DOOR WIDTH REQUIRED	DOOR WIDTH PROVIDED
FIRST FLOOR EXIT DOOR #1	124	.2	18.0"	72"
FIRST FLOOR EXIT DOOR #2	56	.2	11.2"	36"
FIRST FLOOR EXIT DOOR #3	1	.2	0.2"	36"
FIRST FLOOR EXIT DOOR #4	1	.2	0.2"	36"
FIRST FLOOR EXIT DOOR #5	56	.2	11.2"	36"
SECOND FLOOR EXIT DOOR #6	35	.2	7"	36"

EXIT STAIR NO.	NUMBER OF OCCUPANTS	STAIR INCHES PER PERSON (WITH SPRINKLER SYSTEM IBC 1005.1)	STAIR WIDTH REQUIRED	STAIR WIDTH PROVIDED
STAIR #1	34	.3	10.2"	48"
STAIR #2	36	.3	10.8"	48"

CD FP OA LEVEL 2 - EXITING PLAN

1

1/8" = 1'-0"

Occupancy - Load Calculation - 2nd Floor

Room Number	Room Name	Area	TABLE 1004.1.1 Maximum Floor Area Allowances Per Occupant	Occupancy per Table 1015.1	Maximum Occupancy Load	Occupant Load Factor	Occ Load	Number of Exits Required
2A01	WAITING ROOM	338 SF	7 Assembly without fixed seats, Unconcentrated (tables and chairs)	A	49	15	23	1
2A01A	VESTIBULE	665 SF	0 No Classification Applies	(none)		0		
2A02	OFFICE	144 SF	9 Business area	B	49	100	2	1
2A03	OFFICE	128 SF	9 Business area	B	49	100	2	1
2A04	TOILET	75 SF	0 No Classification Applies	(none)		0		
2A05	TOILET	78 SF	0 No Classification Applies	(none)		0		
2A06	HK	30 SF	1 Accessory storage areas, mechanical equipment room	S	29	300	1	1
2A07	EXAM ROOM	87 SF	9 Business area	B	49	100	1	1
2B01	OPEN OFFICE	2801 SF	9 Business area	B	49	100	29	1
2B03	ELECT	265 SF	1 Accessory storage areas, mechanical equipment room	S	29	300	1	1
2B04	TOILET	60 SF	0 No Classification Applies	(none)		0		
2B05	TOILET	60 SF	0 No Classification Applies	(none)		0		
2B06	MECHANICAL ROOM	790 SF	1 Accessory storage areas, mechanical equipment room	S	29	300	3	1
2B07	OFFICE	155 SF	9 Business area	B	49	100	2	1
2C01	OFFICE	144 SF	9 Business area	B	49	100	2	1
2C02	OFFICE	142 SF	9 Business area	B	49	100	2	1
2C03	OFFICE	131 SF	9 Business area	B	49	100	2	1
2C04	STORAGE	158 SF	1 Accessory storage areas, mechanical equipment room	S	29	300	1	1
2C05	DATA	164 SF	1 Accessory storage areas, mechanical equipment room	S	29	300	1	1
2C-1	NON - RATED CORRIDOR	284 SF	0 No Classification Applies	(none)		0		

EXITING PLAN LEGEND

EXIT ACCESS

CUMULATIVE NUMBER OF OCCUPANTS EXITING THROUGH EXIT DOOR CUMULATIVE OCCUPANT LOAD, OCCUPANT LOAD (EXAMPLE: 50)

CUMULATIVE NUMBER OF OCCUPANTS EXITING THROUGH AN OPENING/ DOOR OCCUPANT LOAD EXAMPLE: 11

EXIT SIGNAGE, S.E.D. SOLID LINES INDICATE THE LOCATIONS OF ILLUMINATION WITH EXIT DIRECTIONAL ARROW

PH PANIC HARDWARE

FIRE EXTINGUISHER IN RECESSED CABINET. REFER TO DETAIL TRAVEL DISTANCE: 75'-0" MAX TO FIRE EXTINGUISHER

EXIT COMPONENT (EXAMPLE: DOOR, STAIR)
EXIT WIDTH (EXAMPLE: 36 INCHES)
EXIT FACTOR PER IBC 1005.1
EXIT OCCUPANT LOAD CAPACITY (EXAMPLE: 180)

SECOND FLOOR - EXITING ANALYSIS

2

NTS

CONSULTANTS:

ARCHITECT/ENGINEERS:

HMC Architects

1827 E. Fir Avenue / Studio 103 / Fresno, CA 93720
T 559 322 2444 / www.hmcarchitects.com
HMC PROJECT #1393002-000

Drawing Title
CODE AND EXITING ANALYSIS

Approved: Project Director

Project Title
Mental Health Psychosocial
Rehab Recovery and Health Care
for Homeless Veteran Center

Location
2615 E. CLINTON AVE, FRESNO, CA 93703

Date
08/11/2014

Checked
Checker

Drawn
Author

Project Number
570-217
Building Number
37

Drawing Number
G1004
Dwg. 4 of 197

Office of
Construction
and Facilities
Management:

Department of
Veterans Affairs