

A

B

C

D

E

F

1

2

3

4

5

6

7

8

9

GENERAL NOTES

1. REFER TO SHEET G001 FOR TYPICAL SYMBOLS AND ABBREVIATIONS
2. LIGHT LOUVER IS LOCATED BEHIND THE SOUTH FACING DAYLIGHTING GLAZING PANELS ONLY. TYPICAL LOCATION OF THE DAYLIGHTING GLAZING PANEL IS BETWEEN 7'-0" & 8'-4" FROM THE FINISH FLOOR.

KEYNOTES

- 500 DECORATIVE METAL RAILING
505 CENTRIA BR5 - 36 CORRUGATED METAL PANEL
MECHANICAL SCREEN
506 CENTRIA LOUVER SYSTEM TO MATCH CENTRIA BR5 - 36 PROFILE
902 WALL MOUNTED EXTERIOR LIGHT FIXTURE, SEE ELECTRICAL DRAWINGS.

LIST OF ALTERNATES

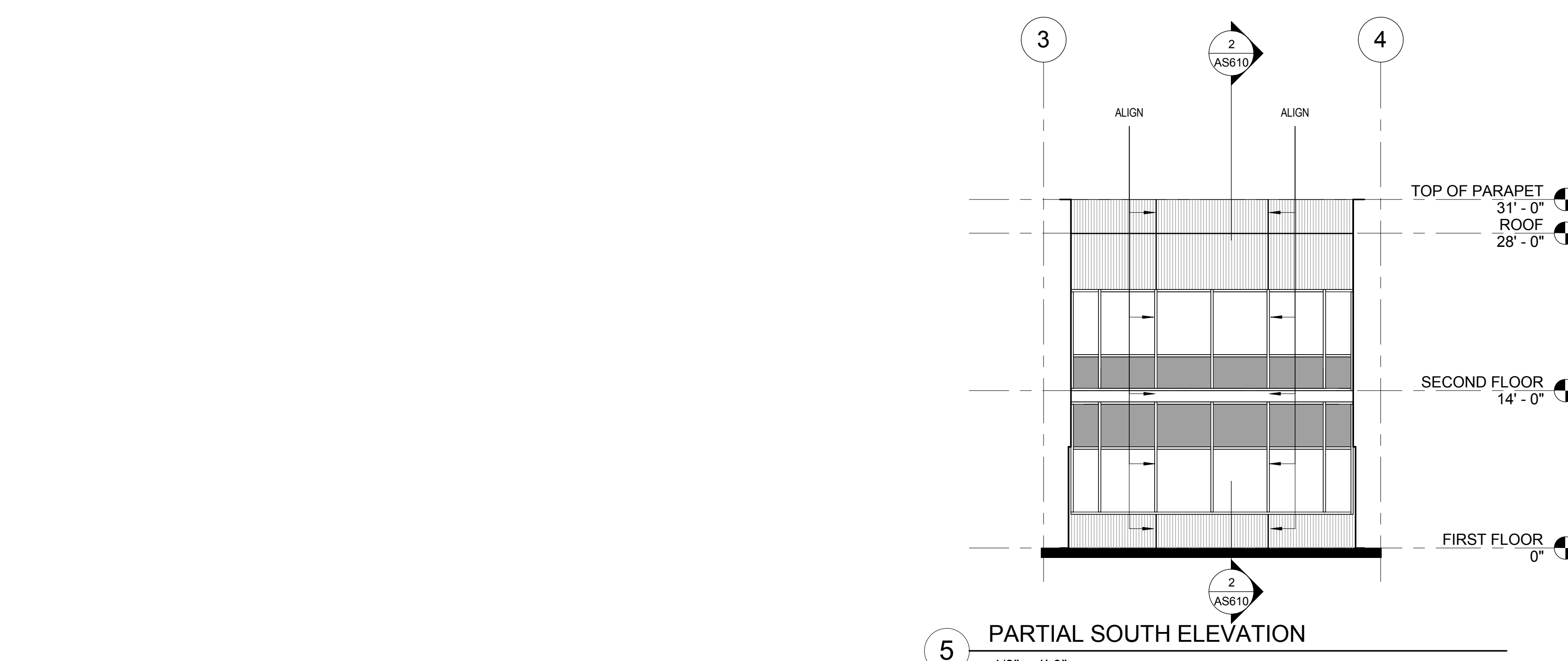
ALT #	PRIORITY	DESCRIPTION
2	11	EFS IN LIEU OF CENTRIA
3	10	EFS IN LIEU OF PLASTIC
4	9	CEILING SOFFIT, FINISHES & QUARTZ SURFACE
5	8	REMOVE WING WALL @ ENTRY
6	7	REMOVE SUN SHADES
7	6	REDUCE ECO SCREENS
8	5	REMOVE TRELLIS
9	1	REDUCE HARDSCAPING
15	3	REDUCED AMOUNT FOR FIXED FURNISHING (CASEWORK)
16	4	CHANGE GLASS GUARDRAIL @ INTERIOR STAIR TO STEEL GUARDRAIL
17	12	REDUCE EXTERIOR GLAZING AND CHANGE EXTERIOR WALL FINISHES TO PAINTED CEMENT PLASTER
19	2	PORTION OF 1ST AND 2ND FLOOR AS UNFINISHED SPACE

NOTE: REFER TO SHEET G001 FOR DESCRIPTIVE INFORMATION REGARDING EACH ALTERNATIVE

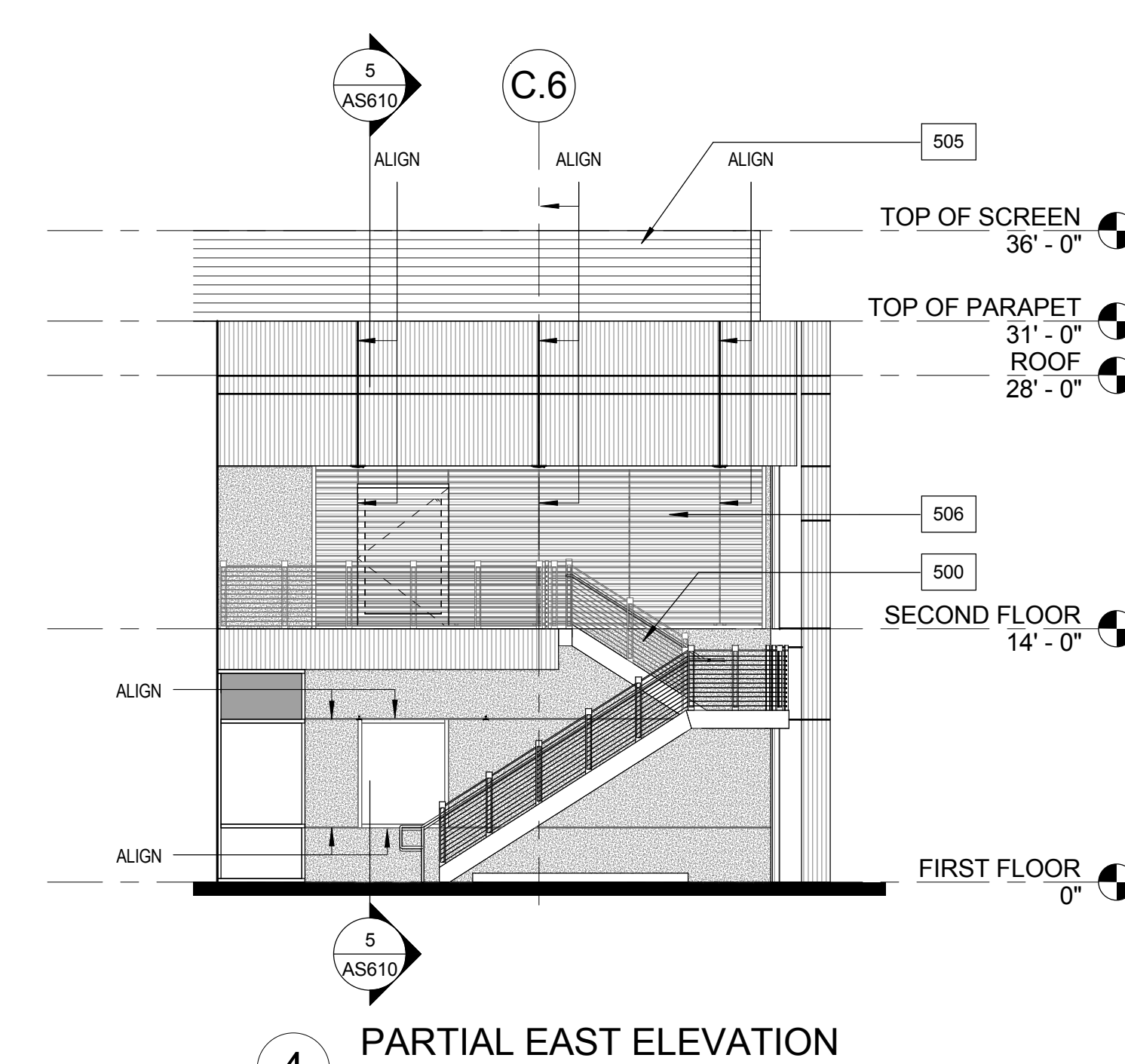
EXTERIOR FINISH LEGEND

GL-1	CLEAR VISION GLASS
GL-2	BLUE VISION GLASS
GL-3	CLEAR SPANDREL GLASS
GL-4	BLUE SPANDREL GLASS
	PLASTIC WALL PANEL SYSTEM, REFER TO SPECIFICATIONS. (REPLACE WITH EFS SYSTEM AT DEDUCT ALT #3)
	EFS SYSTEM
	CENTRIA FORMABOND II COMPOSITE METAL PANELS W/ METAL STUDS AND 1/2" PLYWOOD BEHIND. REFER TO SPECIFICATIONS. (REPLACE WITH EFS SYSTEM AT DEDUCT ALT #2)
	CENTRIA BR5 - 36 CORRUGATED METAL PANELS; REFER TO SPECIFICATIONS
	CENTRIA ECOSCREEN, BR5 - 36 CORRUGATED AND PERFORATED METAL PANELS; REFER TO SPECIFICATIONS. (OMIT AT DEDUCT ALT #7)

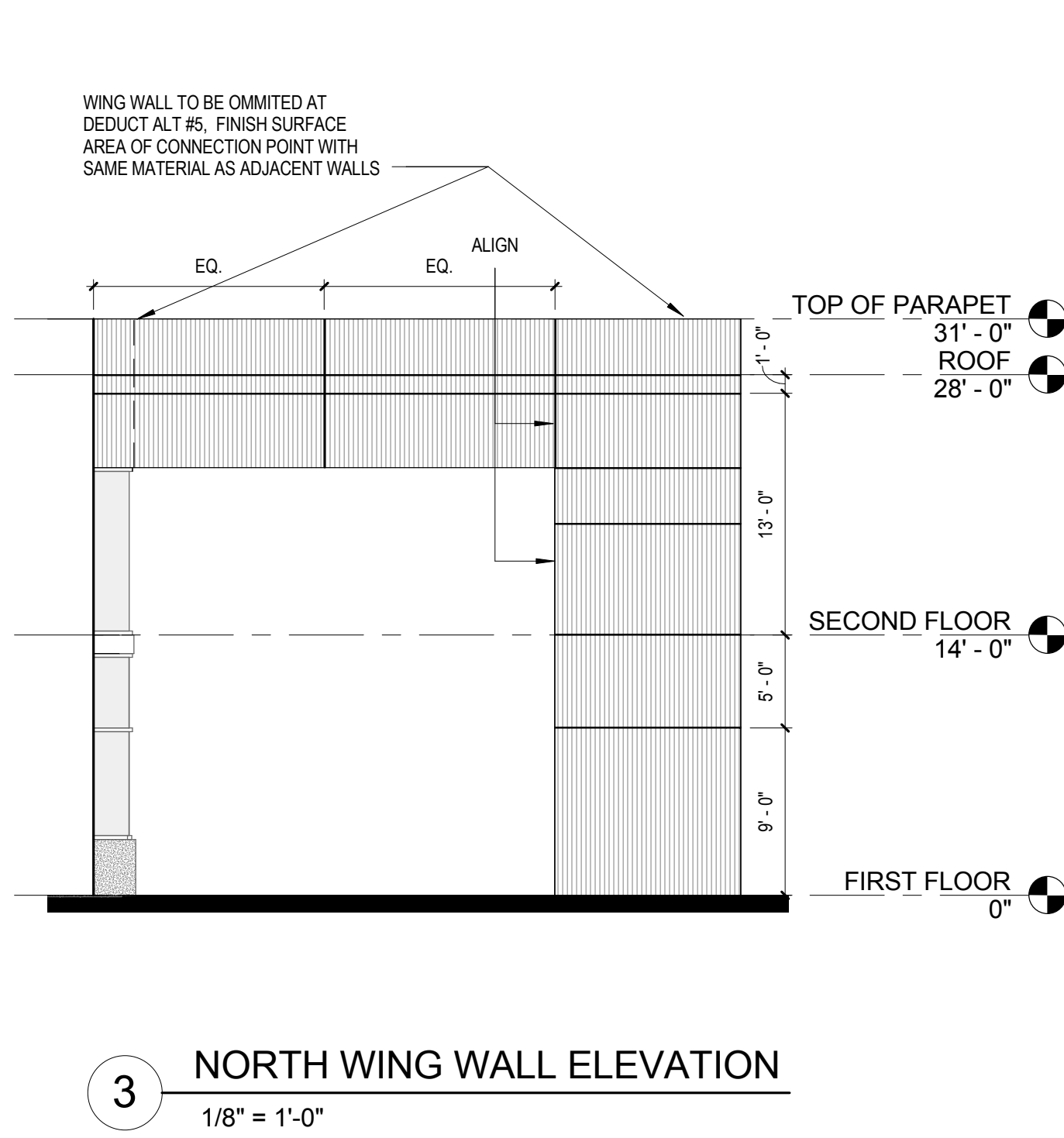
NOTE:
REFER TO SHEET AF201 FOR EXTERIOR FINISHES



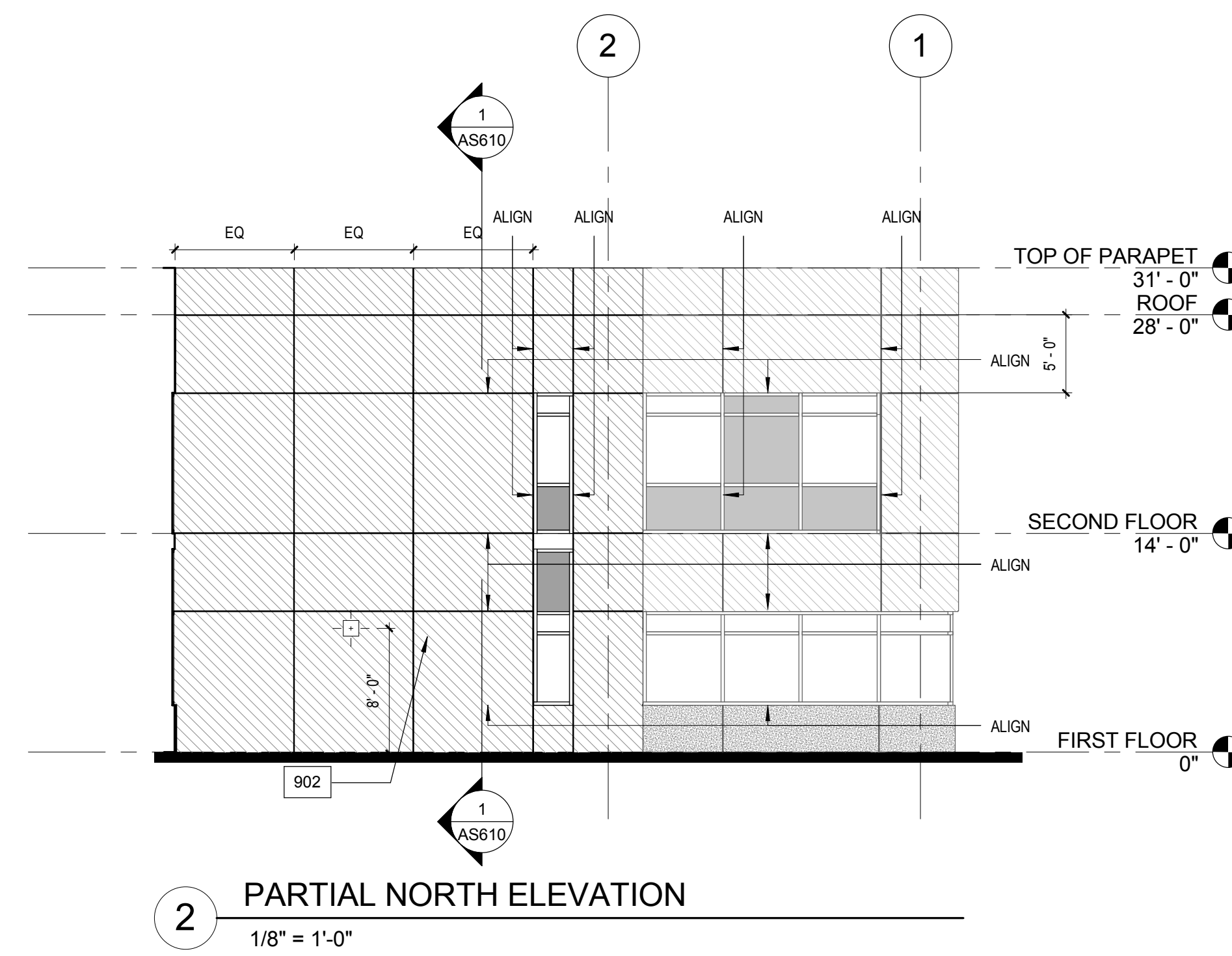
5 PARTIAL SOUTH ELEVATION
1/8" = 1'-0"



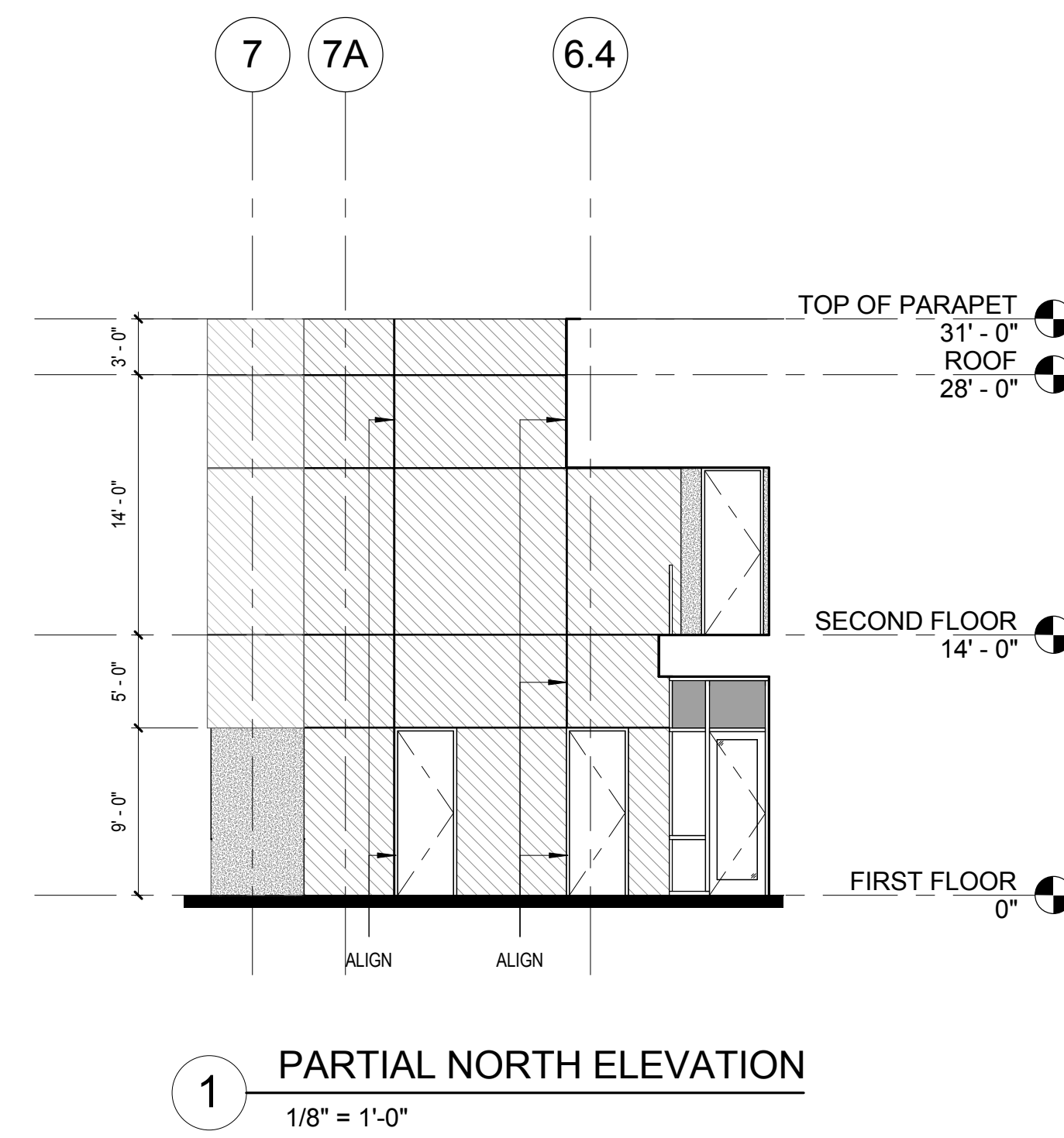
4 PARTIAL EAST ELEVATION
1/8" = 1'-0"



3 NORTH WING WALL ELEVATION
1/8" = 1'-0"



2 PARTIAL NORTH ELEVATION
1/8" = 1'-0"



1 PARTIAL NORTH ELEVATION
1/8" = 1'-0"

CONSULTANTS:

ARCHITECT/ENGINEERS:



HMCArchitects

1827 E. Fir Avenue / Studio 103 / Fresno, CA 93720
T 559 322 2444 / www.hmcarchitects.com
HMC PROJECT #1393002-000

Drawing Title
EXTERIOR ELEVATIONS

Approved: Project Director

Project Title
Mental Health Psychosocial
Rehab Recovery and Health Care
for Homeless Veteran Center

Location
2615 E. CLINTON AVE, FRESNO, CA 93703

Date
08/11/2014

Checked
WB, GV

Drawn
SK

Project Number
570-217

Building Number
37

Drawing Number
AS511

Dwg. 29 of 197

Office of
Construction
and Facilities
Management.

