

A

B

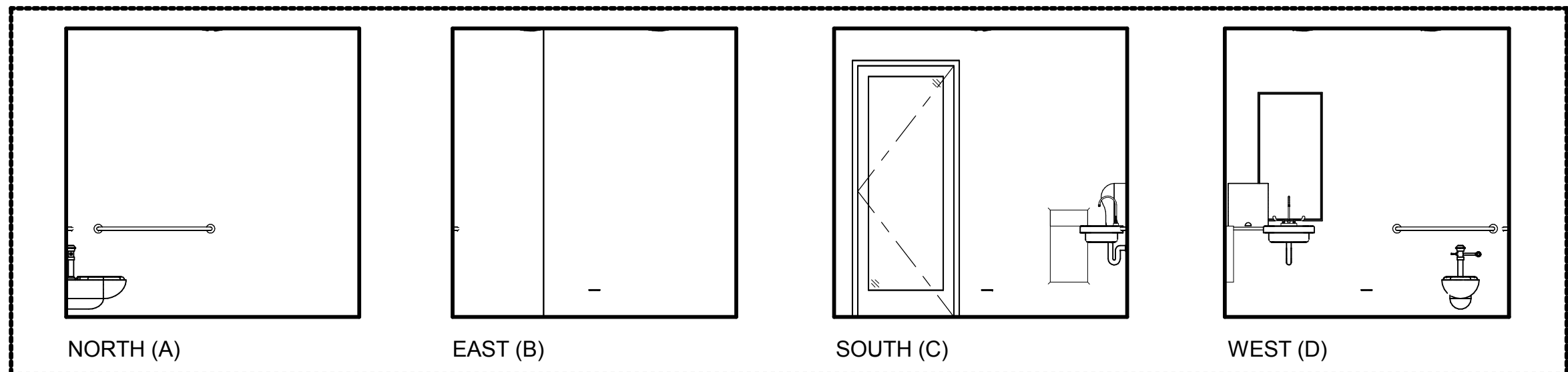
C

D

E

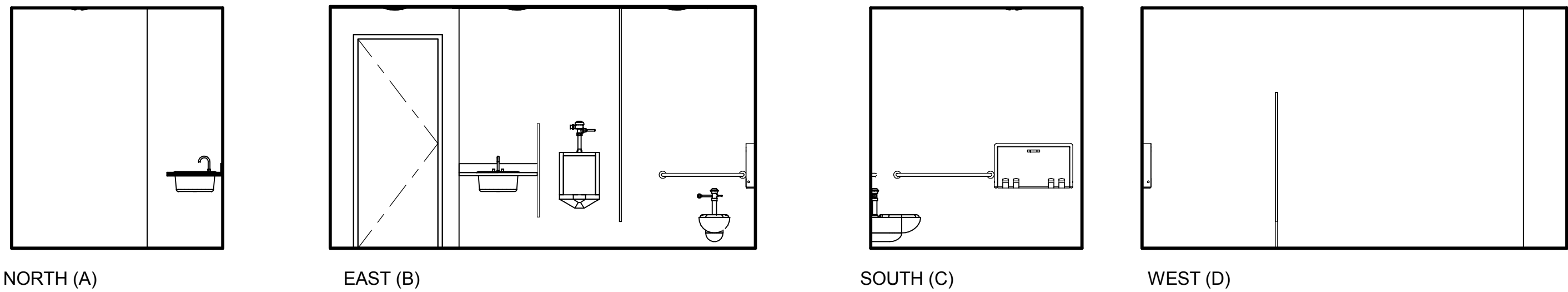
F

three inches = one foot
one and one half inches = one foot
one inch = one foot
three quarters inch = one foot
one half inch = one foot
three eighths inch = one foot
one quarter inch = one foot
one eighth inch = one foot
one sixteenth inch = one foot



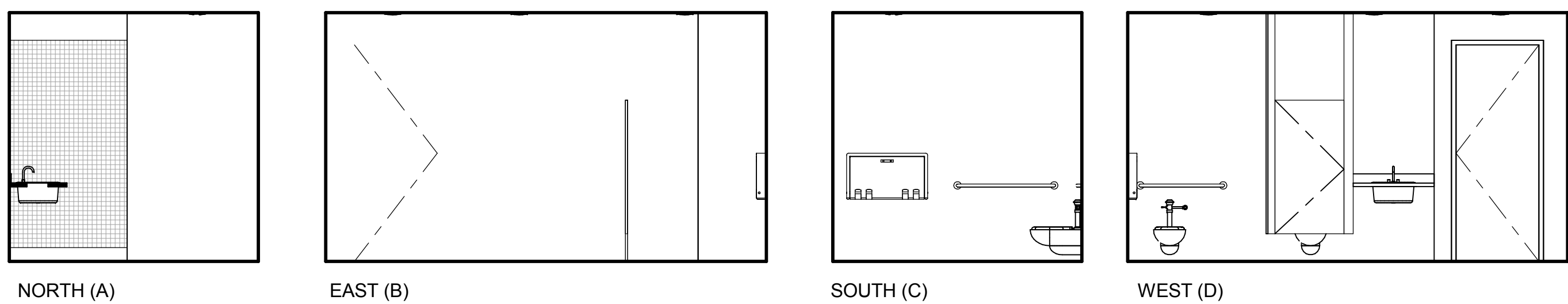
6 TOILET 1A04 - INTERIOR ELEVATION
1/4" = 1'-0"

SEE SHEET AS974 FOR ADDITIONAL DIMENSIONS AND DETAILS



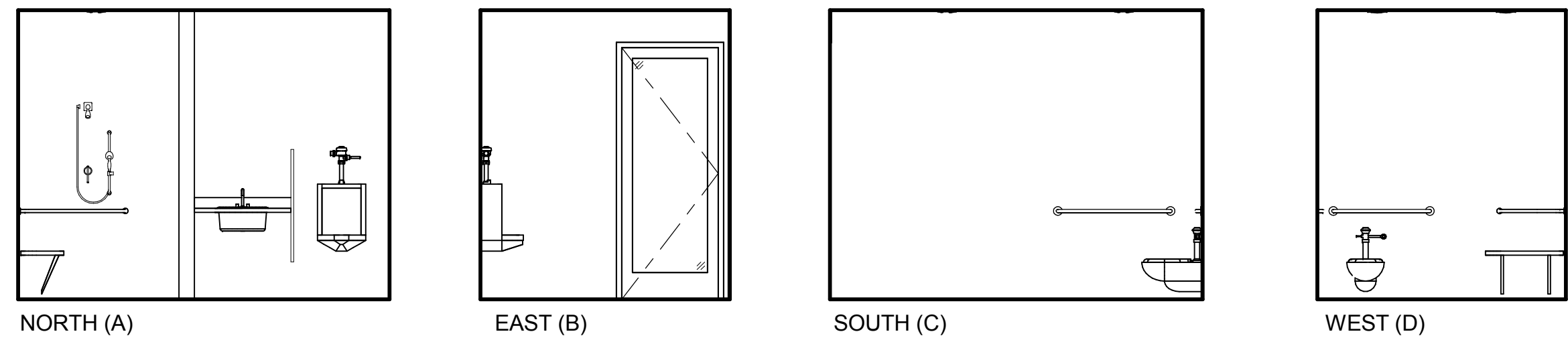
7 TOILET 1B13 - INTERIOR ELEVATION
1/4" = 1'-0"

SEE SHEET AS974 FOR ADDITIONAL DIMENSIONS AND DETAILS



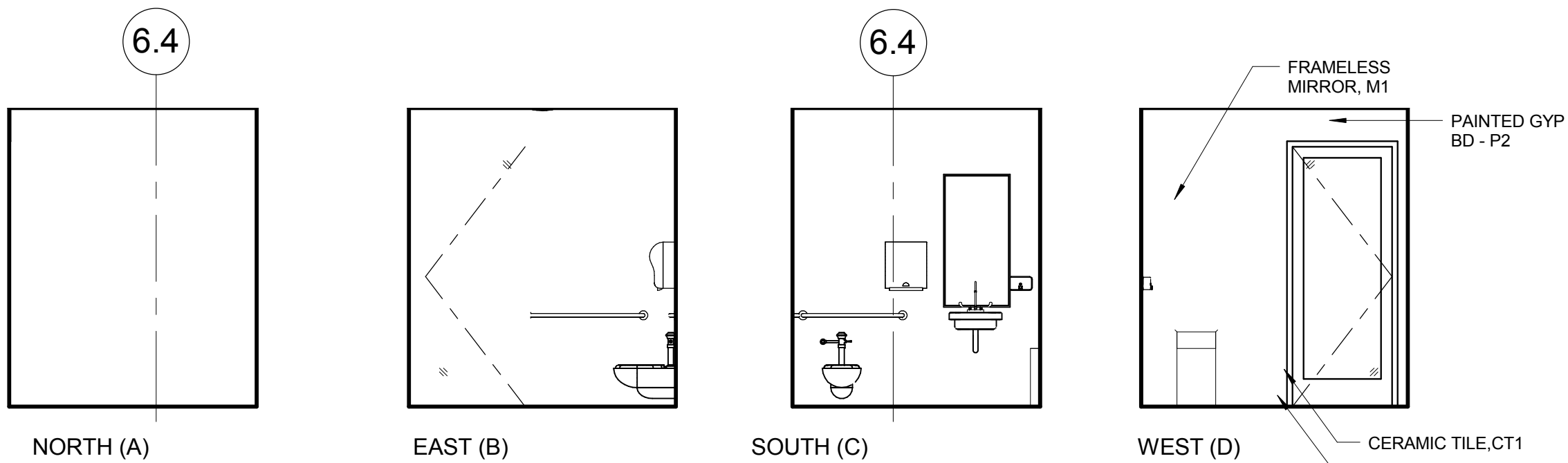
8 TOILET 1A09 (1A08 SIM.) - INTERIOR ELEVATION
1/4" = 1'-0"

SEE SHEET AS974 FOR ADDITIONAL DIMENSIONS AND DETAILS



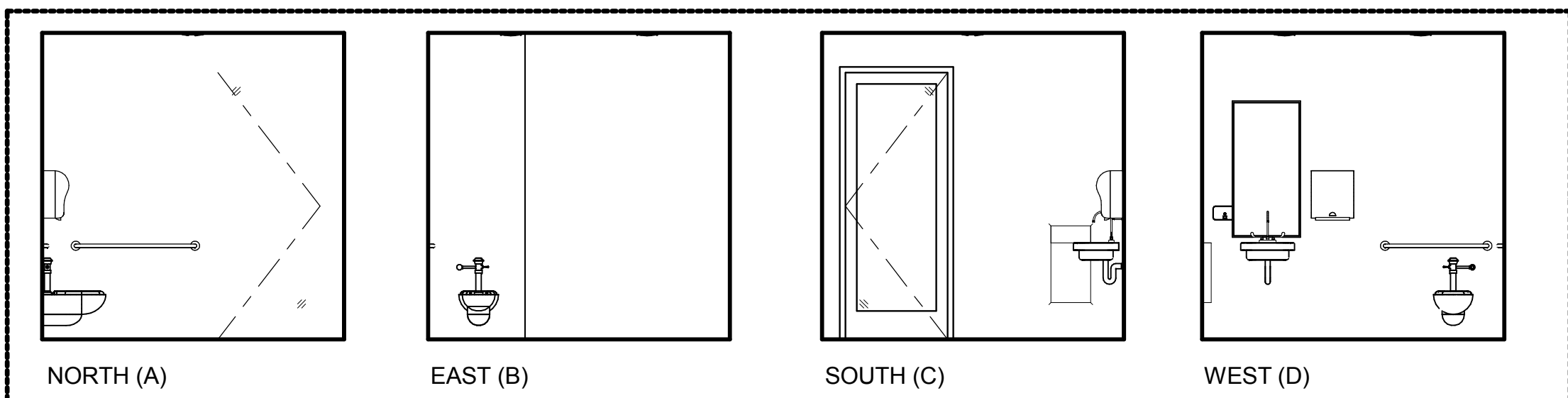
9 TOILET 1B12 (1B13 SIM.) - INTERIOR ELEVATION
1/4" = 1'-0"

SEE SHEET AS974 FOR ADDITIONAL DIMENSIONS AND DETAILS



10 TOILET 2B05 (2B04, SIM., O.H.) - INTERIOR ELEVATION
1/4" = 1'-0"

SEE SHEET AS974 FOR ADDITIONAL DIMENSIONS AND DETAILS



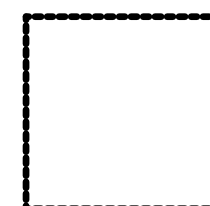
11 TOILET 2A05 (2A04 SIM. O.H.) - INTERIOR ELEVATION
1/4" = 1'-0"

SEE SHEET AS974 FOR ADDITIONAL DIMENSIONS AND DETAILS

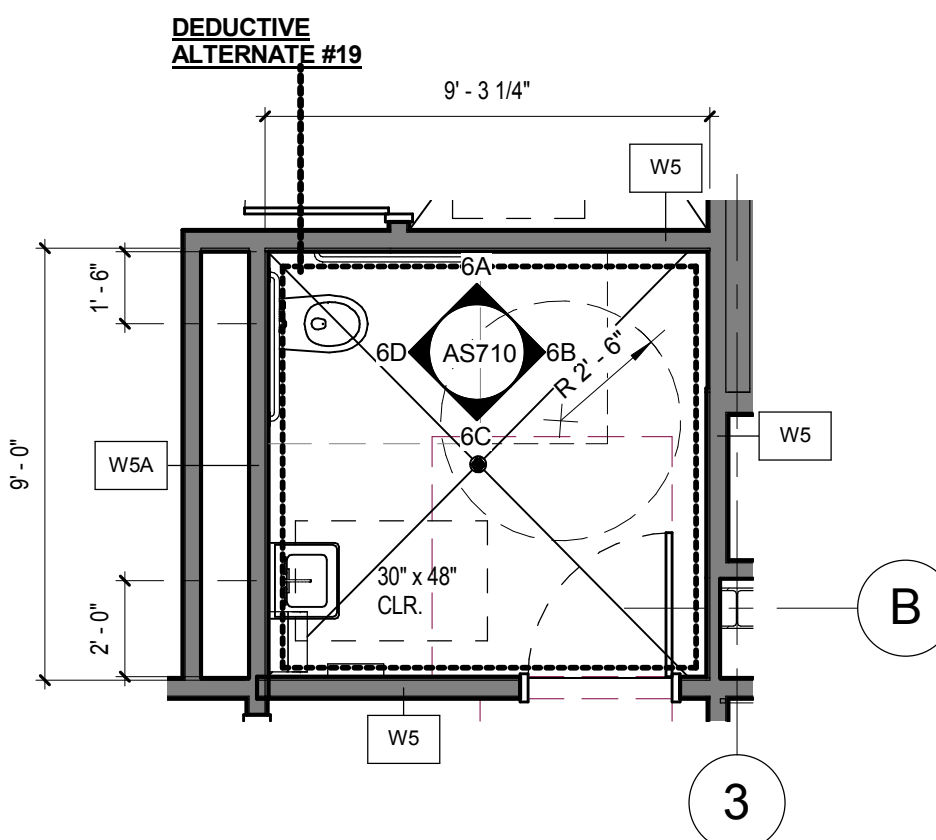
GENERAL NOTES

1. SEE AS976 FOR LOCATION AND ALIGNMENT OF WALL MOUNTED DEVICES AND SWITCHES.
2. SEE SHEET AS974 FOR TOILET FIXTURE AND ACCESSORY MOUNTING HEIGHTS AND ADDITIONAL INFORMATION
3. SEE SPECIFICATION SECTION 09 06 00 FOR MORE INFORMATION ON MATERIAL AND FINISHES
4. REFER TO SHEET G1001 FOR TYPICAL SYMBOLS AND ABBREVIATIONS

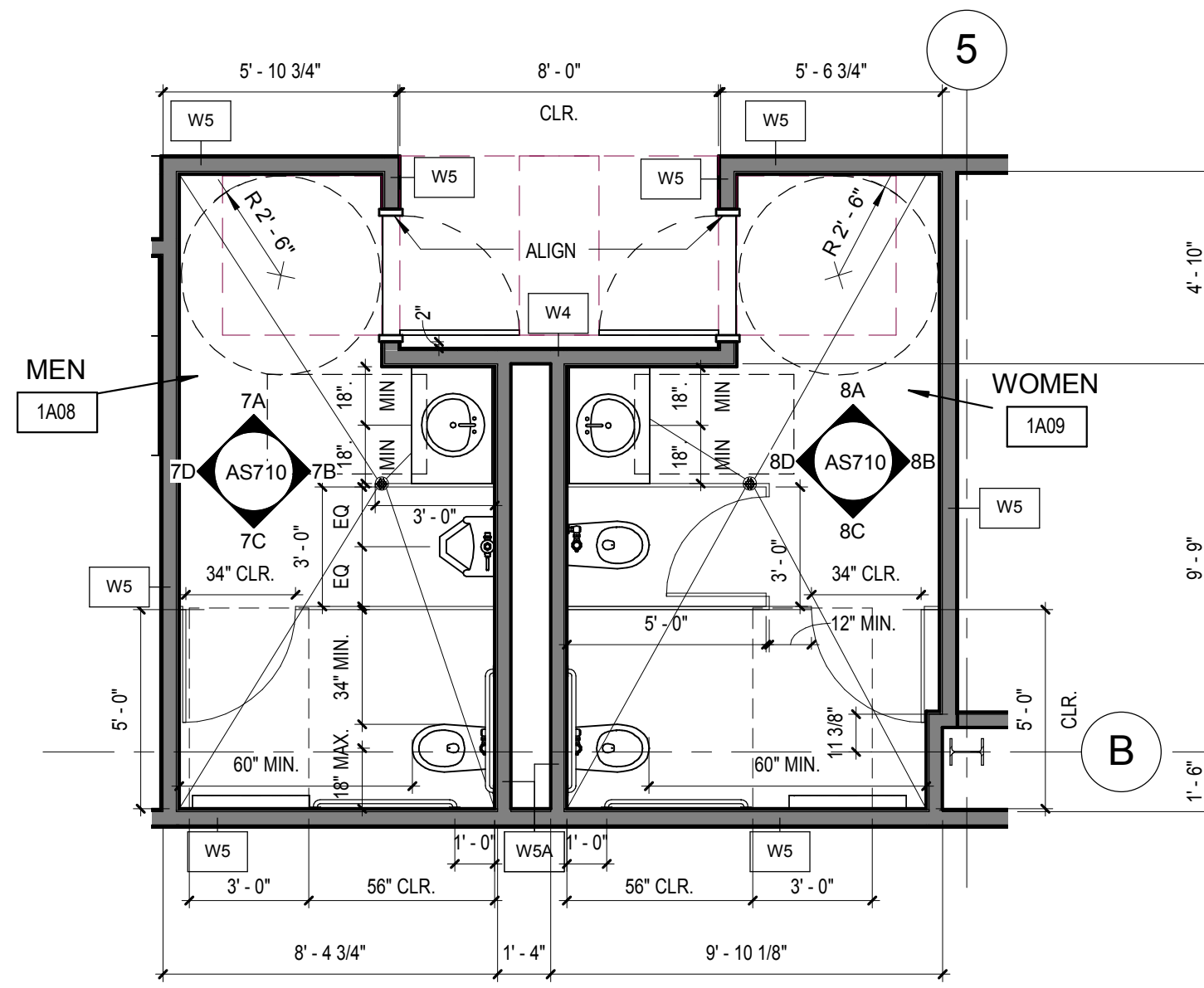
LEGEND



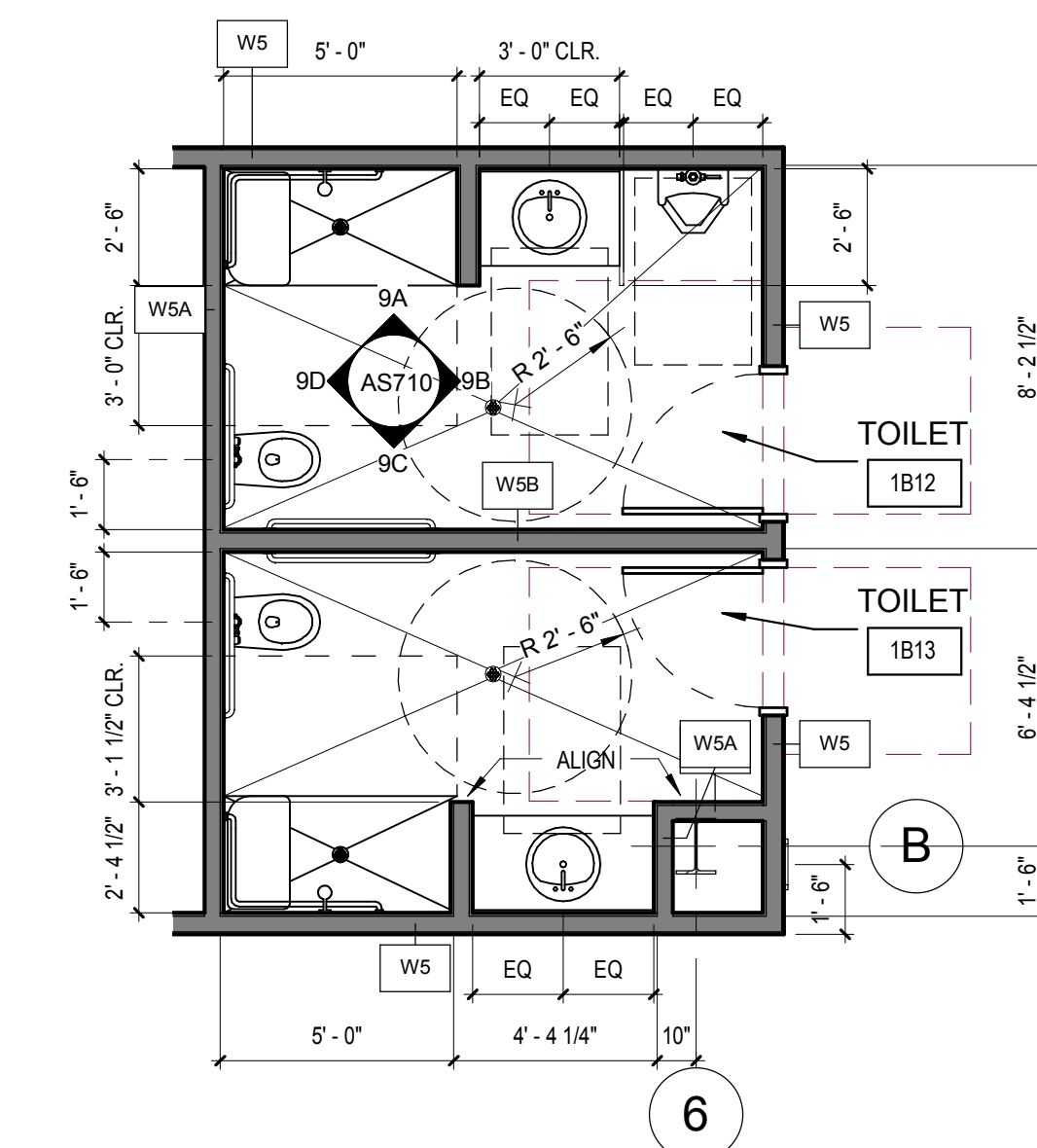
AREA OF DEDUCTIVE ALTERNATE #19
THIS SPACE TO BE LABELED AS "UNFINISHED". DEDUCT ALL INTERIOR WALLS, FINISHES, CEILING, FRAE, PLUMBING FIXTURES, TOILET ROOM ACCESSORIES, ETC. PROVIDE CODE REQUIRED EXIT LIGHTING, HVAC (AND ACCESS) TO MACHINE ROOM 105 & DATA ROOM 006 AND IDENTIFY MEP POINTS OF CONNECTION FOR FUTURE BUILD OUT OF THIS AREA.



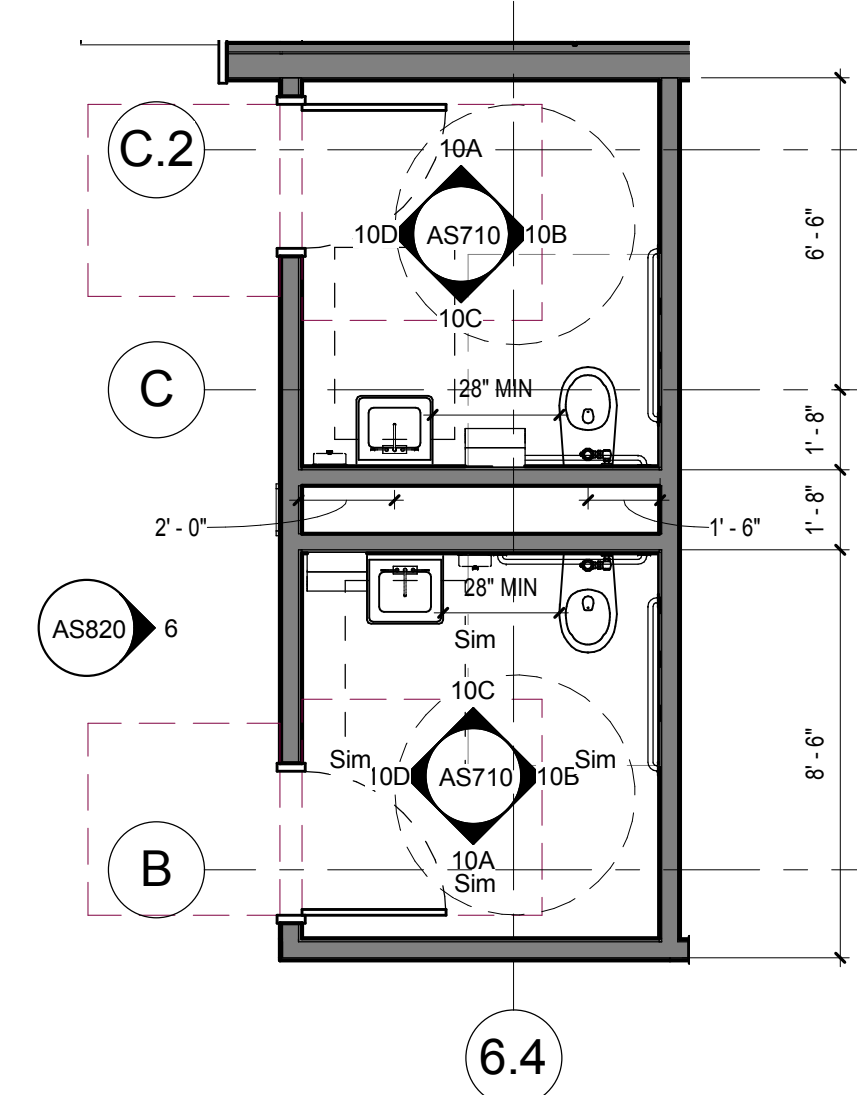
1 TOILET ROOM 1A04
1/4" = 1'-0"



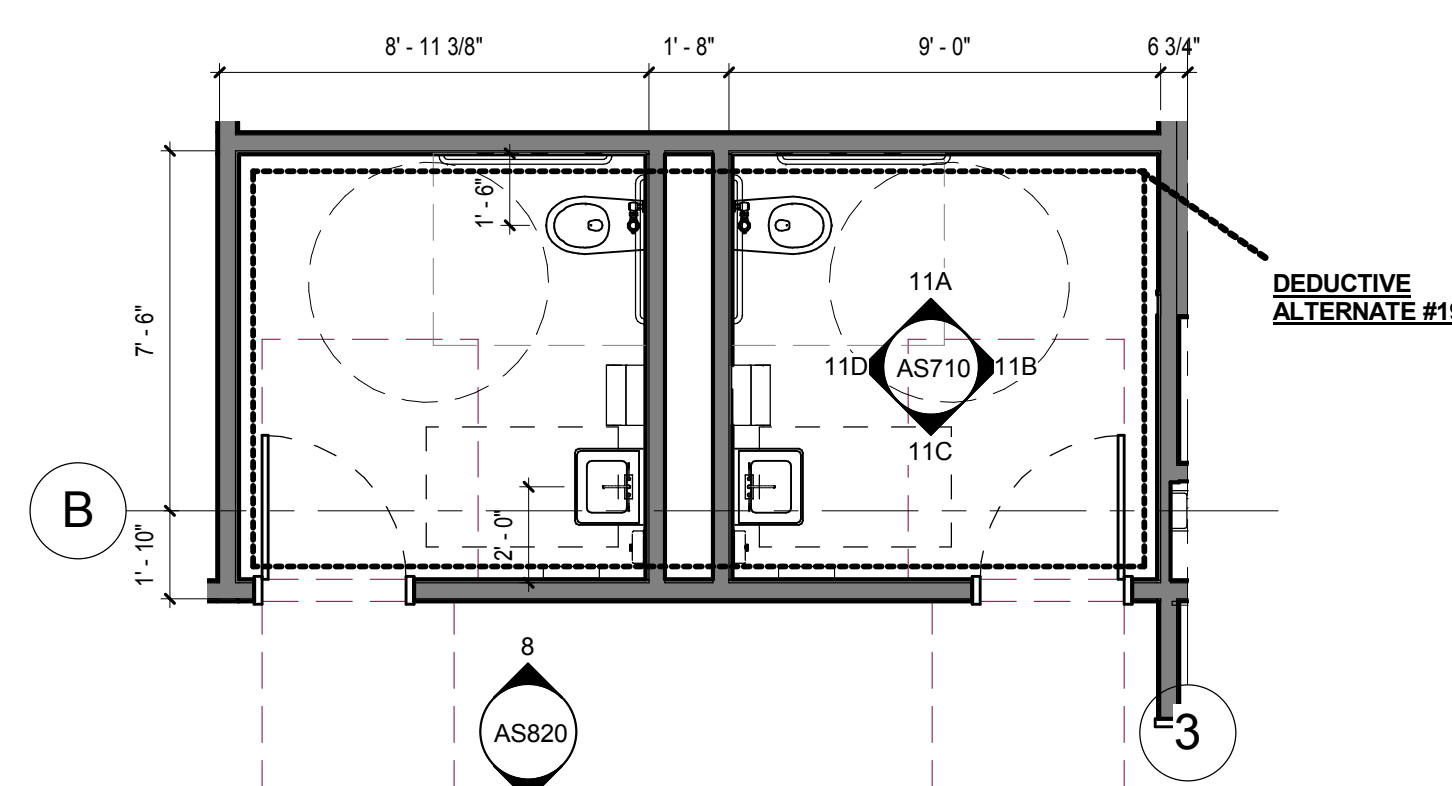
2 TOILET ROOMS 1A08 & 1A09
1/4" = 1'-0"



3 TOILET ROOMS 1B12 AND 1B13
1/4" = 1'-0"



4 TOILET ROOMS 2B04 AND 2B05
1/4" = 1'-0"



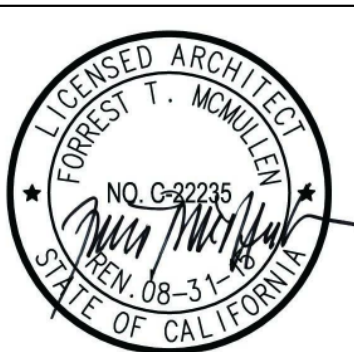
5 TOILET ROOMS 2A04 AND 2A05
1/4" = 1'-0"

CONSULTANTS:

ARCHITECT/ENGINEERS:

HMC Architects

1827 E. Fir Avenue / Studio 103 / Fresno, CA 93703
T 559 322 2444 / www.hmcarchitects.com
HMC PROJECT #1393002-000



Drawing Title
ENLARGED TOILET ROOM PLANS AND INTERIOR ELEVATIONS

Approved: Project Director

Project Title
Mental Health Psychosocial Rehab Recovery and Health Care for Homeless Veteran Center

Location
2615 E. CLINTON AVE, FRESNO, CA 93703

Date
08/11/2014

Checked
WB, GV

Drawn
MB, CLO, LS

Project Number
570-217

Building Number
37

Drawing Number
AS710

Dwg. 45 of 197

Office of
Construction
and Facilities
Management:

