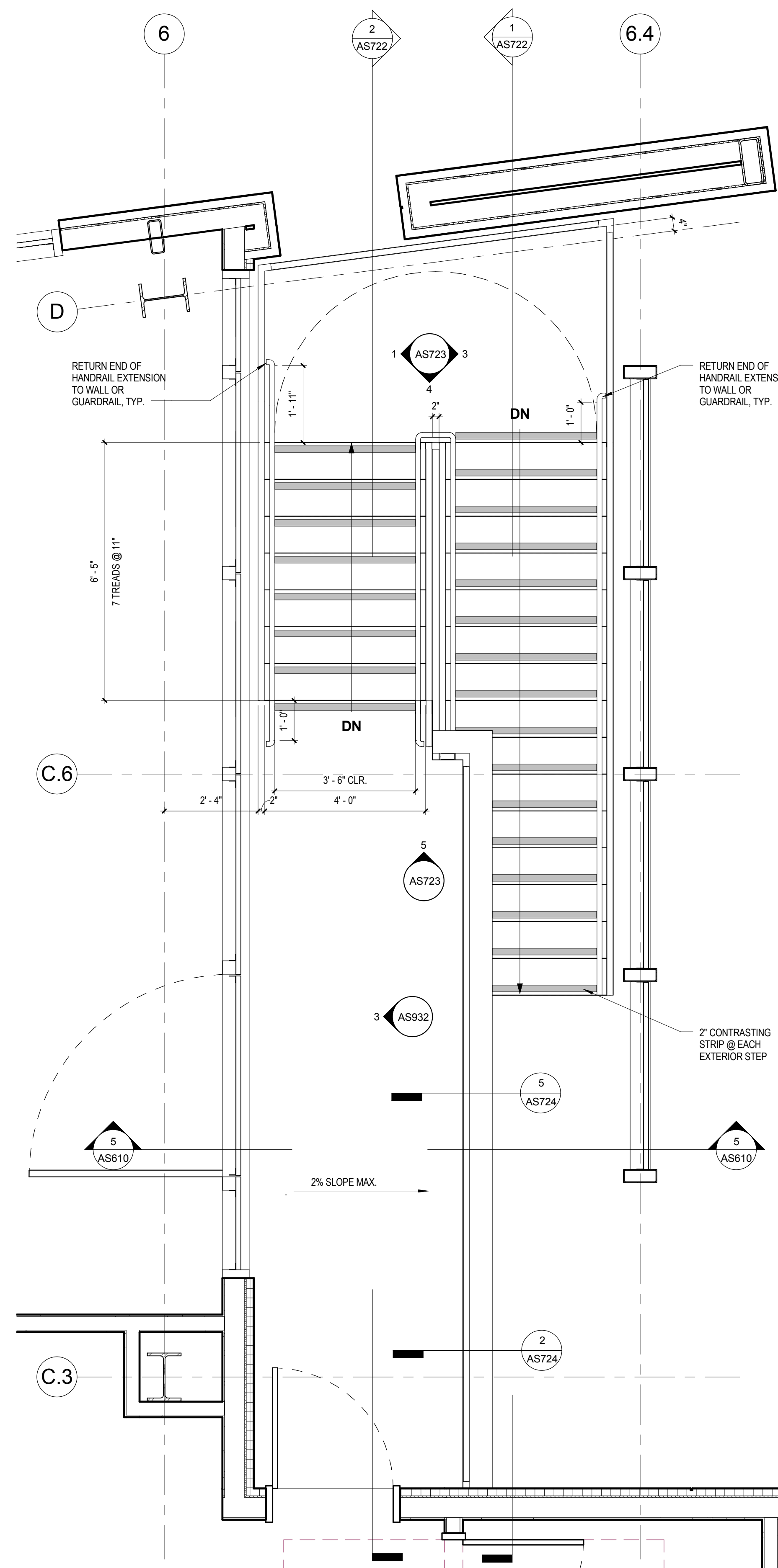
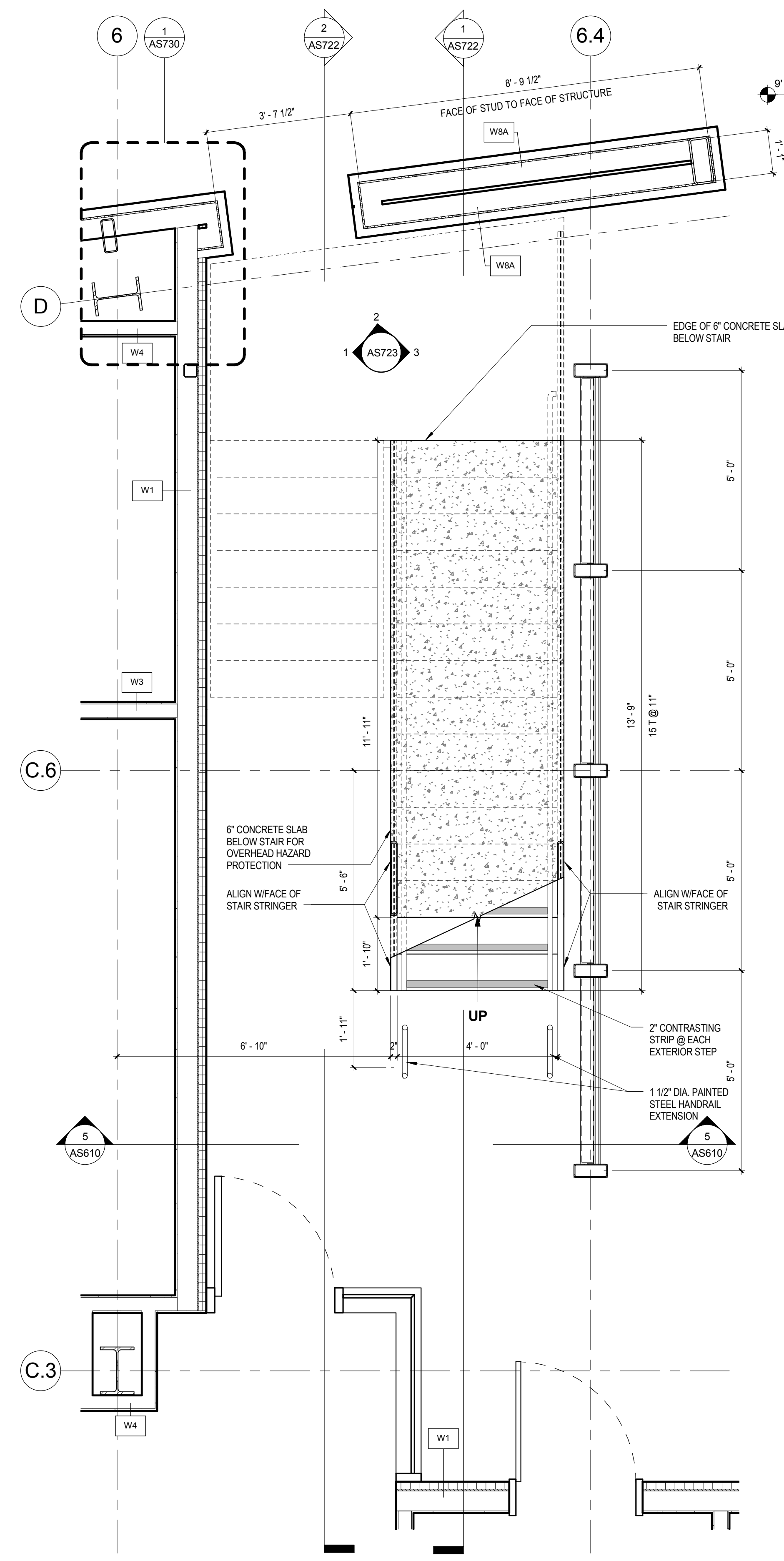


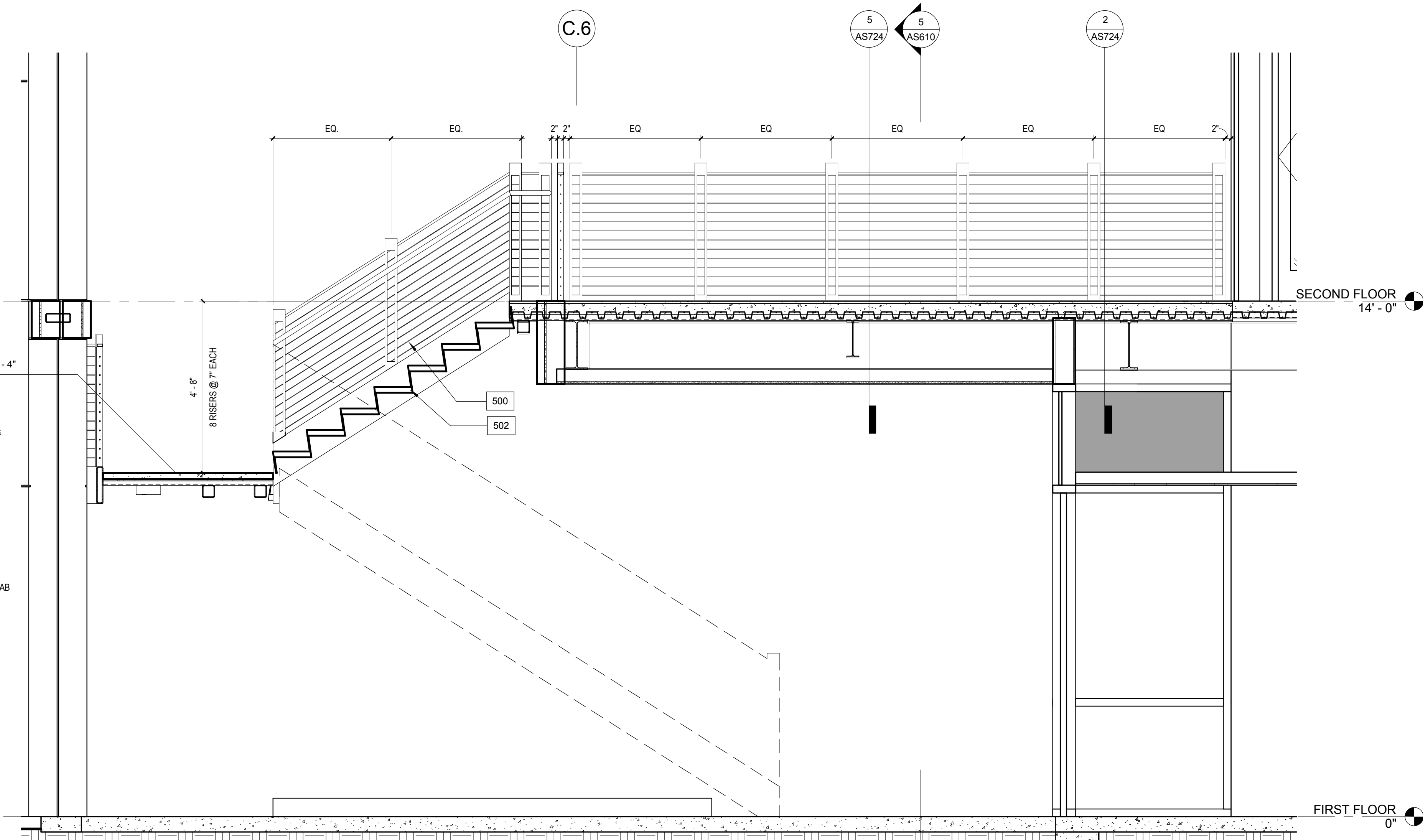
500 DECORATIVE METAL RAILING  
502 METAL STAIRS W/2" CONCRETE FILL STEPS



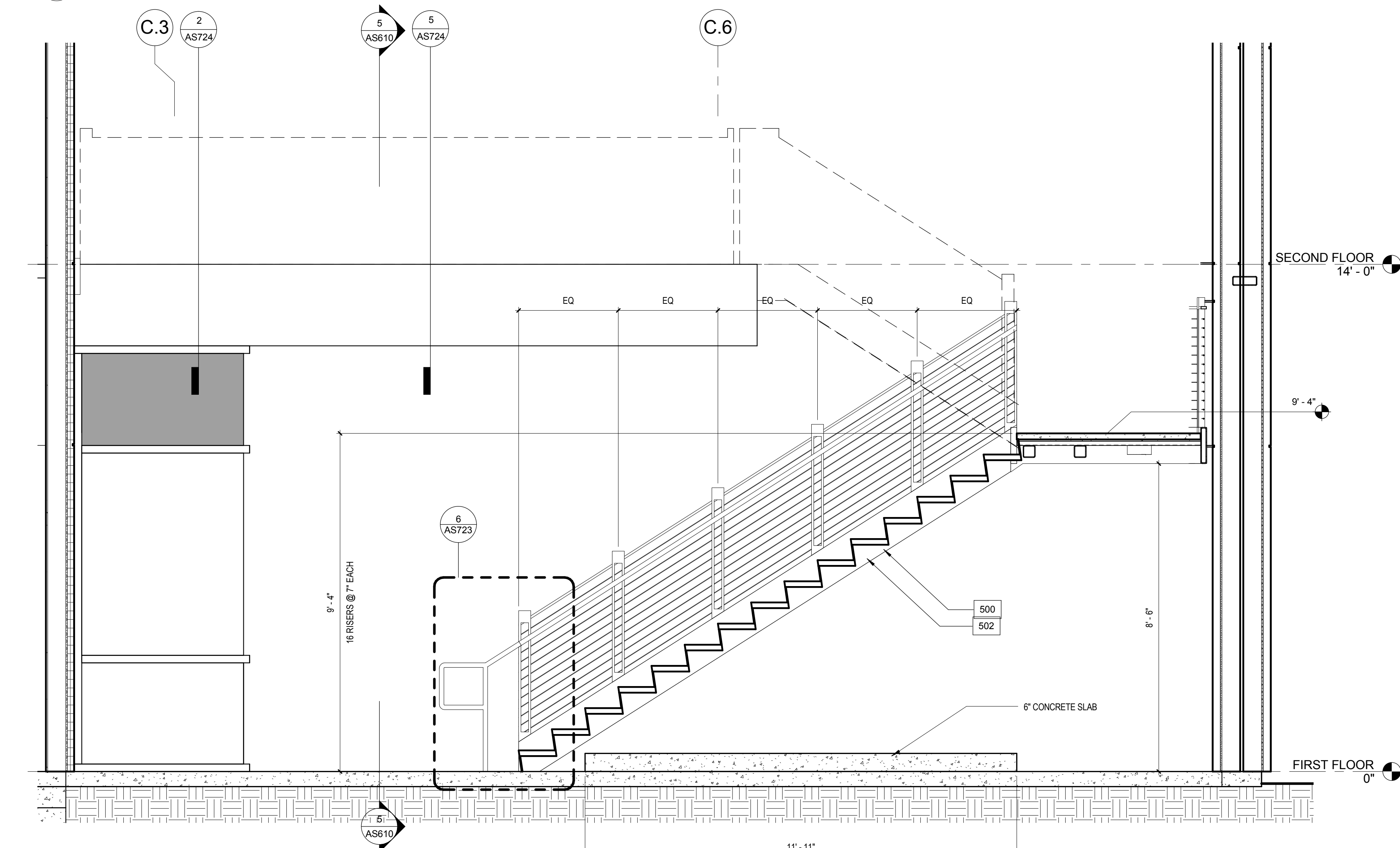
4 ENLARGED FLOOR PLAN LEVEL 2 - STAIR 2  
1/2" = 1'-0"



3 ENLARGED FLOOR PLAN LEVEL 1 - STAIR 2  
1/2" = 1'-0"



2 SECTION - STAIR #2  
1/2" = 1'-0"



1 SECTION - STAIR #2  
1/2" = 1'-0"

			CONSULTANTS:						ARCHITECT/ENGINEERS:  <b>HMC Architects</b> 1827 E. Fir Avenue / Studio 103 / Fresno, CA 93720 T 559 322 2444/ www.hmcarchitects.com HMC PROJECT #1393002-000			Drawing Title <b>ENLARGED STAIR 2 PLANS AND SECTIONS</b>  Approved: Project Director			Project Number <b>570-217</b> Building Number <b>37</b>			Office of Construction and Facilities Management:   Department of Veterans Affairs		
									Drawing Title <b>Mental Health Psychosocial Rehab Recovery and Health Care for Homeless Veteran Center</b>			Location <b>2615 E. CLINTON AVE, FRESNO, CA 93703</b>			Drawing Number  <b>AS722</b> Dwg. 48 of 197					
									Approved: Project Director			Date 08/11/2014			Checked WB, GV					