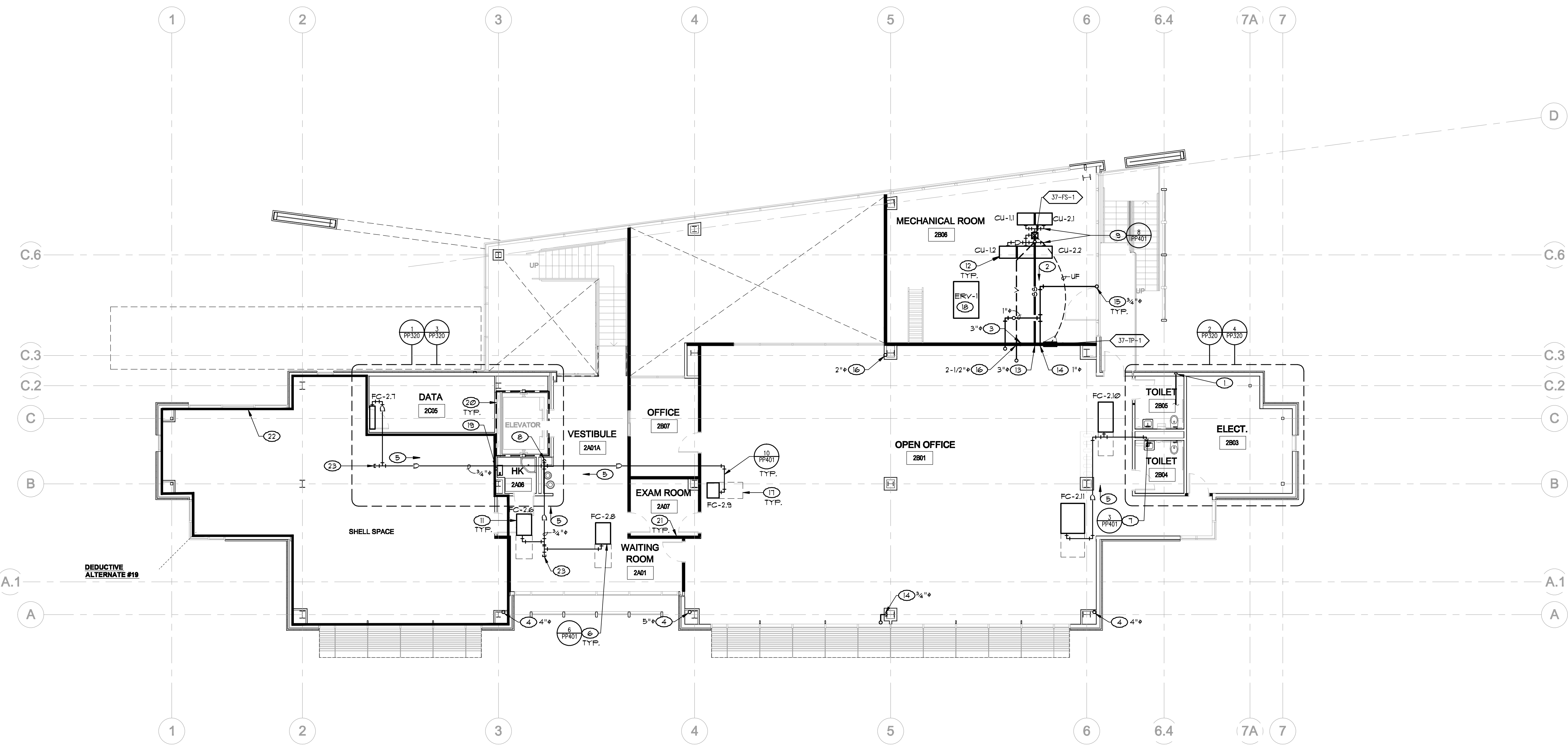


0
three inches = one foot
0
one and one half inches = one foot
0
one inch = one foot
0
three quarters inch = one foot
0
one half inch = one foot
0
three eighths inch = one foot
0
one quarter inch = one foot
0
one eighth inch = one foot
0
one sixteenth inch = one foot



- KEY NOTES**
- 1 SPRINKLER RISER FROM BELOW.
 - 2 SLOPE ATTIC SANITARY SEWER PIPING 1/4" PER FOOT IN DIRECTION INDICATED.
 - 3 SANITARY SEWER DROP FROM ROOF. SEE PP230 FOR CONTINUATION.
 - 4 STORM DRAIN DROP FROM ATTIC AND DROP TO FIRST FLOOR. SEE PP230 AND PP210 FOR CONTINUATION.
 - 5 SLOPE CONDENSATE DRAIN PIPING 1/8" PER FOOT IN DIRECTION SHOWN.
 - 6 CONNECT 3/4" CONDENSATE TO FANCOIL UNIT EQUIPPED WITH CONDENSATE DRAIN LIFT PUMP SPECIFIED ON MECHANICAL PLANS.
 - 7 ROUTE 1" CONDENSATE DRAIN DOWN IN WALL, ELBOW OUT, CONNECT TO LAVATORY/SINK DRAIN TAILPIECE.
 - 8 ROUTE 1" CONDENSATE DRAIN DOWN IN WALL, ELBOW OUT AND TERMINATE AT MOP SINK WITH AIR GAP.
 - 9 ROUTE 1" CONDENSATE DRAIN MANIFOLD FOR 3/4" CONDENSING UNIT DRAINS TO FLOOR SINK AND TERMINATE WITH AIR GAP.
 - 10 NOT USED.
 - 11 FAN COIL IN ATTIC. SEE MECHANICAL DRAWINGS.
 - 12 INDOOR WATER-COOLED CONDENSING UNITS ON FLOOR. SEE MECHANICAL DRAWINGS.
 - 13 SANITARY SEWER DROP FROM ATTIC TO FIRST FLOOR. SEE PP210 FOR CONTINUATION.
 - 14 CW RISER FROM FIRST FLOOR. SEE PP210 FOR CONTINUATION.
 - 15 CW RISER TO ROOF. SEE PP230 FOR CONTINUATION.
 - 16 VENT FROM FIRST FLOOR ATTIC TO ROOF. SEE PP220 AND PP230 FOR CONTINUATION.
 - 17 MECHANICAL EQUIPMENT CLEARANCE AREA. COORDINATE WITH MECH. CONTRACTOR.
 - 18 ENERGY RECOVERY VENTILATOR. SEE MECHANICAL DRAWINGS.
 - 19 GAS RISER FOR GAS-FIRED WATER HEATER FROM FIRST FLOOR. SEE PP210 FOR CONTINUATION.
 - 20 1-HOUR FIRE RATED WALL. SEE ARCHITECTURAL DRAWINGS.
 - 21 ACOUSTICAL SOUND WALL. SEE ARCHITECTURAL DRAWINGS.
 - 22 FOR EXTENT OF ALTERNATE DEDUCTIVE SEE ARCHITECTURAL DRAWINGS.
 - 23 CAP PIPING FOR FUTURE CONNECTION.

1 SECOND FLOOR PLUMBING PLAN
SCALE: 1/8" = 1'-0"



CONSULTANTS:



LP Consulting Engineers, Inc.
885 W. Ashlan Ave, Suite 101 Clovis, CA 93612
p 559-348-2130 - f 559-348-2131
www.lpeengineers.com
Job #: 11-1088.1

ARCHITECT/ENGINEERS:

HMC Architects
1827 E. Fir Avenue / Studio 103 / Fresno, CA 93720
T 559 322 2444 / www.hmcarchitects.com
HMC PROJECT #1383002-000

Drawing Title
**SECOND FLOOR PLUMBING PLAN
(DEDUCTIVE ALTERNATE #19)**

Approved: Project Director

Project Title
**Mental Health Psychosocial
Rehab Recovery and Health Care
for Homeless Veteran Center**

Location
2615 E. CLINTON AVE, FRESNO, CA 93703

Date
8/ 11/ 2014

Checked
KK, GL

Drawn
DN

Project Number
570-217
Building Number
37

Drawing Number
PP221
Dwg. of

Office of
Construction
and Facilities
Management:

