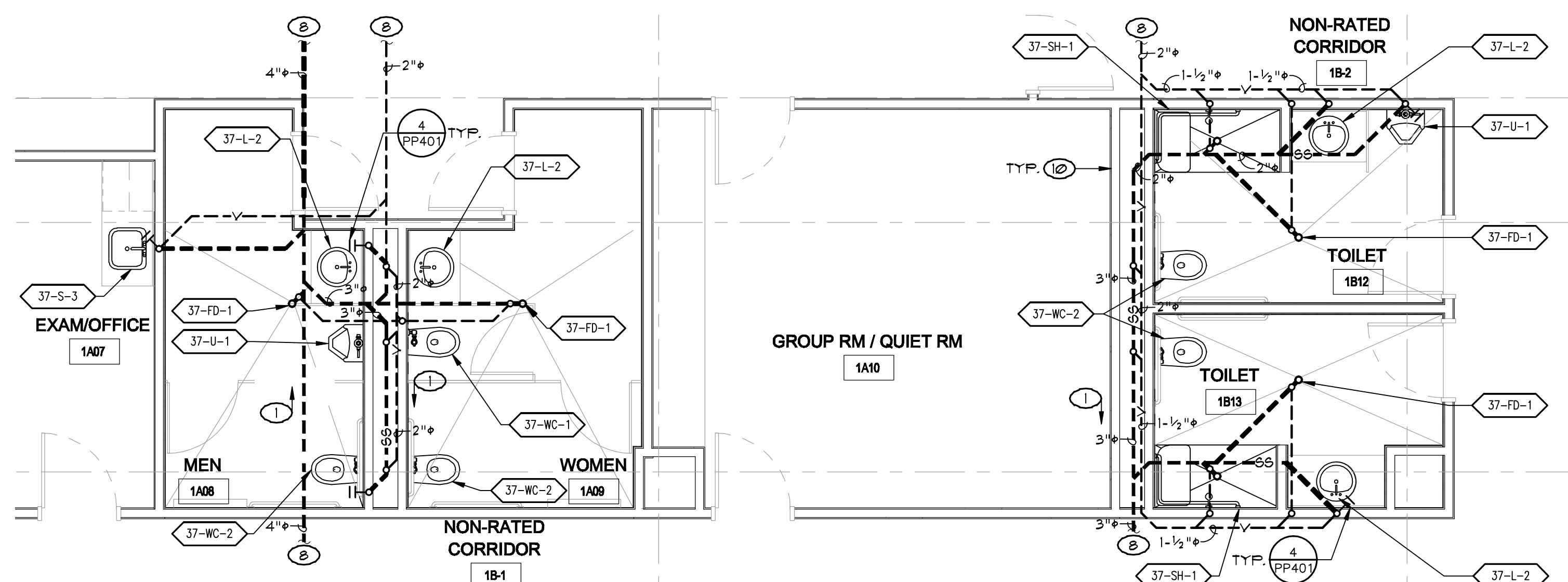
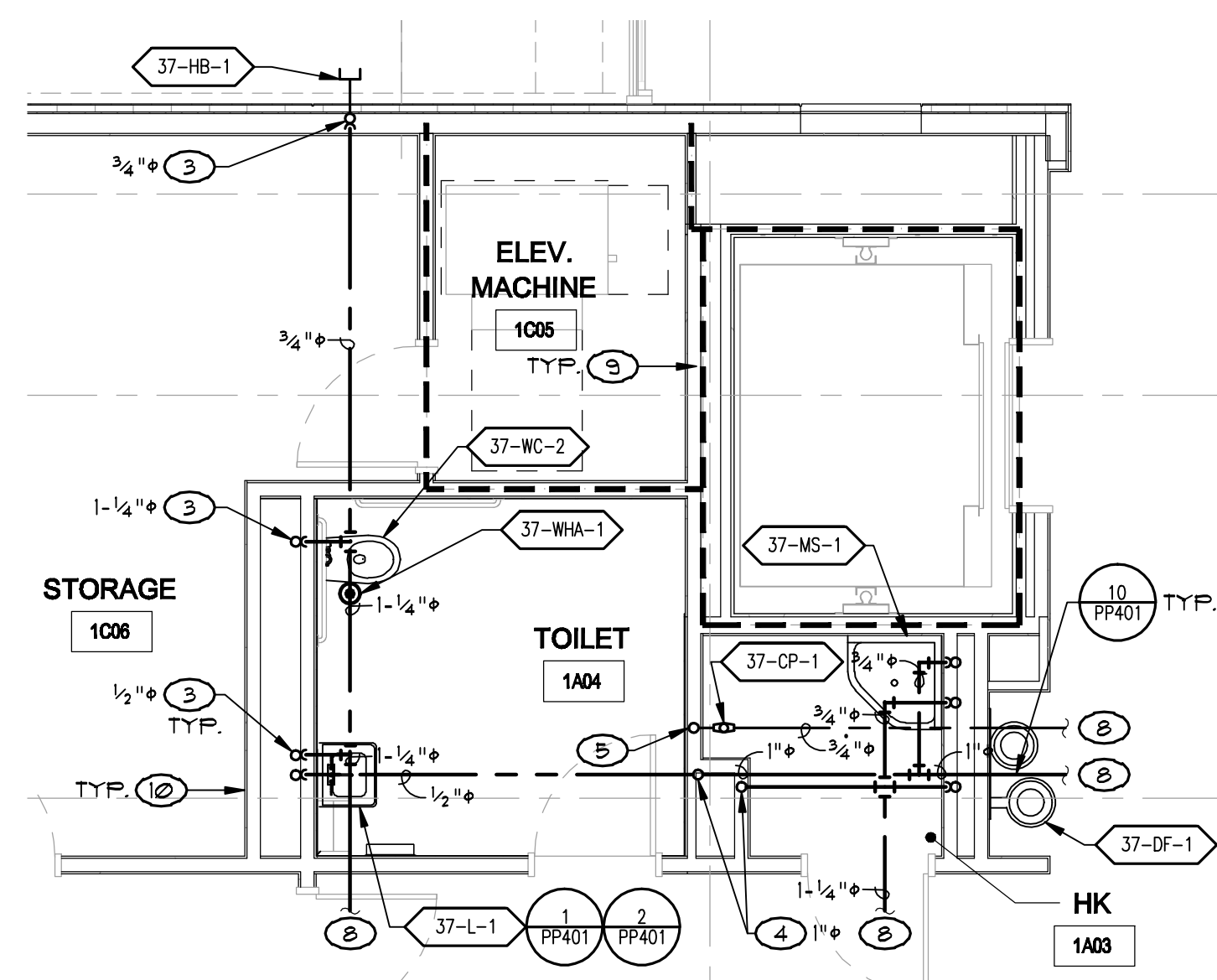


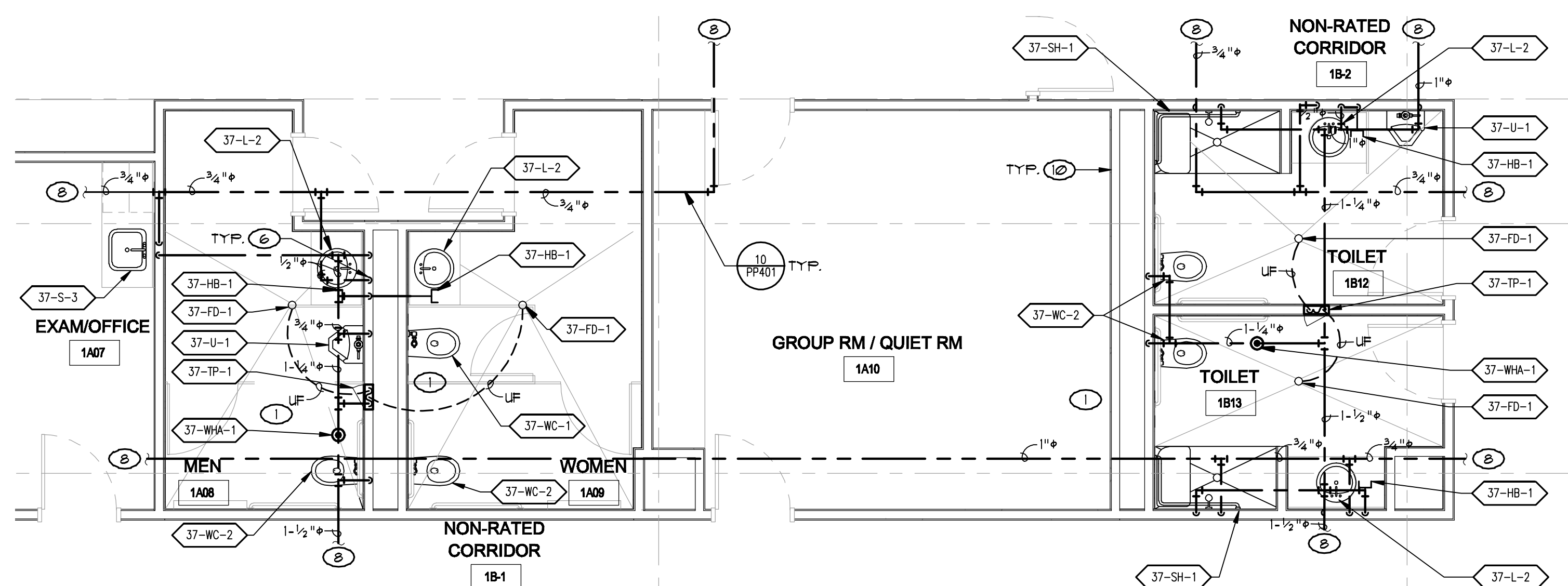
**SEWER AND VENT FOR
FIRST FLOOR PARTIAL PLUMBING PLAN**
SCALE: 1/4" = 1'-0"



**SEWER AND VENT FOR
FIRST FLOOR PARTIAL PLUMBING PLAN**
SCALE: $1/4" = 1'-0"$



3 HOT AND COLD WATER FOR
FIRST FLOOR PARTIAL PLUMBING PLAN
SCALE: 1/4" = 1'-0"



4 HOT AND COLD WATER FOR
FIRST FLOOR PARTIAL PLUMBING PLAN
SCALE: 1/4" = 1'-0"

KEY NOTES

- (1) SLOPE SOIL PILING 1/4" PER FOOT IN DIRECTION INDICATED (TYPICAL).
- (2) SANITARY SEWER DROP FROM SECOND FLOOR. SEE FP320 FOR CONTINUATION.
- (3) WATER SUPPLY TO FIRST FLOOR FIXTURE AND RISE TO SECOND FLOOR FIXTURE. SEE FP320 FOR CONTINUATION.
- (4) WATER SUPPLY RISER TO SECOND FLOOR. SEE FP320 FOR CONTINUATION.
- (5) 3/4" HUR RISER TO SECOND FLOOR ATTIC. SEE FP320 FOR CONTINUATION.
- (6) WATER SUPPLY DROP TO FIXTURE.
- (7) ROUTE VENT UP INTO SECOND FLOOR ATTIC. SEE FP320 FOR CONTINUATION.
- (8) FOR CONTINUATION SEE FP210.
- (9) 1-HOUR FIRE RATED WALL. SEE ARCHITECTURAL DRAWINGS.
- (10) ACOUSTICAL SOUND WALL. SEE ARCHITECTURAL DRAWINGS.

CONSULTANTS:



LP Consulting Engineers, Inc.
895 W. Ashton Ave, Suite 101 Clovis, CA 93611
p 559-348-2130 - f 559-348-2131
www.lpengineers.com
Job #: 11-1008.1

ARCHITECT/ENGINEERS:

HMC Architects

1827 E. Fir Avenue / Studio 103 / Fresno, CA 93720
T 559 322 2444/ www.hmcarchitects.com
HMC PROJECT #1393002-000

Drawing Title	FIRST FLOOR PARTIAL PLUMBING PLANS
---------------	---------------------------------------

Approved: Project Director

Project Title	Mental Health Psychosocial Rehab Recovery and Health Care for Homeless Veteran Center
---------------	---

Location	2615 E. CLINTON AVE, FRESNO, CA 93703
----------	---------------------------------------

Date
8/11/2014

Checked
PD, GL

Drawn	DN
-------	----

Project Number	570-217
Building Number	37

Drawing Number
3
PP3

**Office of
Construction
and Facilities
Management:**

