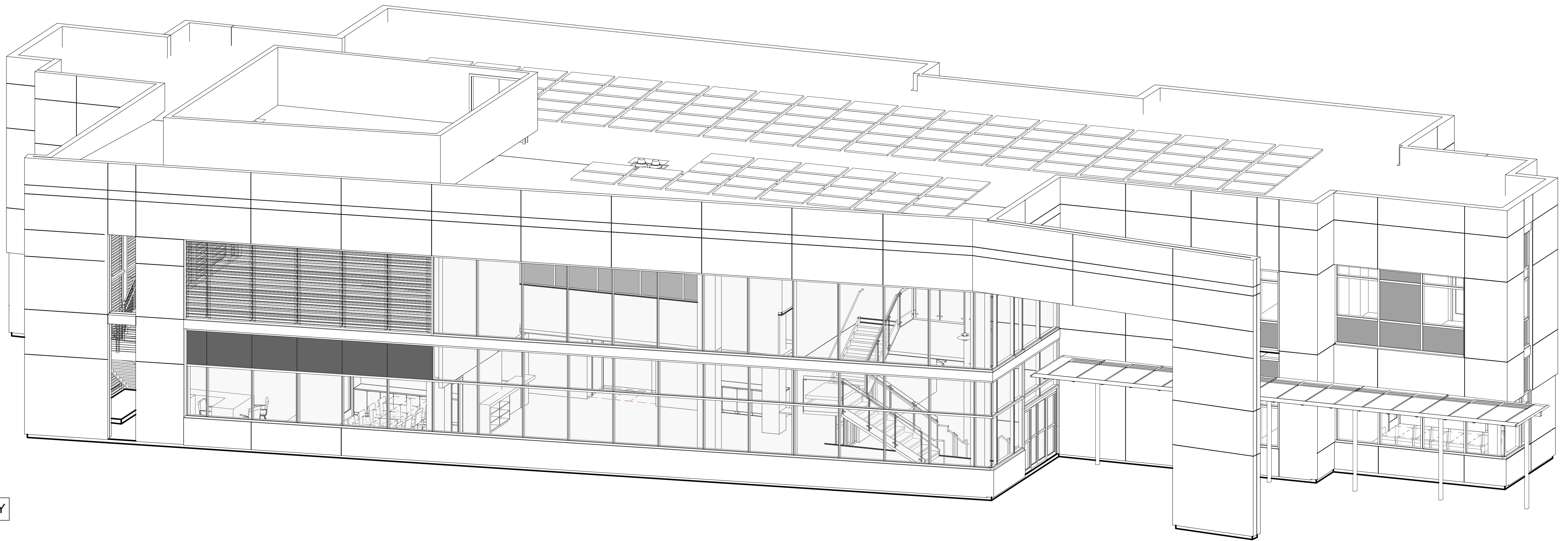


FOR REFERENCE ONLY

C1 NORTH ELEVATION - STRUCTURAL

SS002 NOT TO SCALE

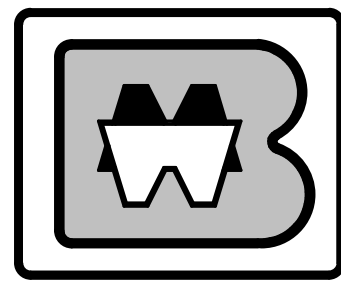


FOR REFERENCE ONLY

A1 NORTH ELEVATION - ARCHITECTURAL

SS002 NOT TO SCALE

CONSULTANTS:



BROOKS-RANSOM ASSOCIATES

STRUCTURAL ENGINEERS CIVIL ENGINEERS
WWW.BROOKSRANSOM.COM

7415 N. PALM AVE., SUITE 100
FRESNO, CALIFORNIA 93711

PHONE: 559-449-8440 FAX: 559-449-8404



ARCHITECT/ENGINEERS:

HMC Architects

1827 E. Fir Avenue / Studio 103 / Fresno, CA 93720
T 559 322 2444 / www.hmcarchitects.com
HMC PROJECT #1393002-000

Drawing Title
NORTH 3D VIEWS

Approved: Project Director

Project Title
Mental Health Psychosocial
Rehab Recovery and Health Care
for Homeless Veteran Center

Location
2615 E. CLINTON AVE, FRESNO, CA 93703

Date
08/11/2014

Checked
Checker

Drawn
Author

Project Number

570-217

Building Number

37

Drawing Number

SS002

Dwg. 81 of 197

Office of
Construction
and Facilities
Management:

