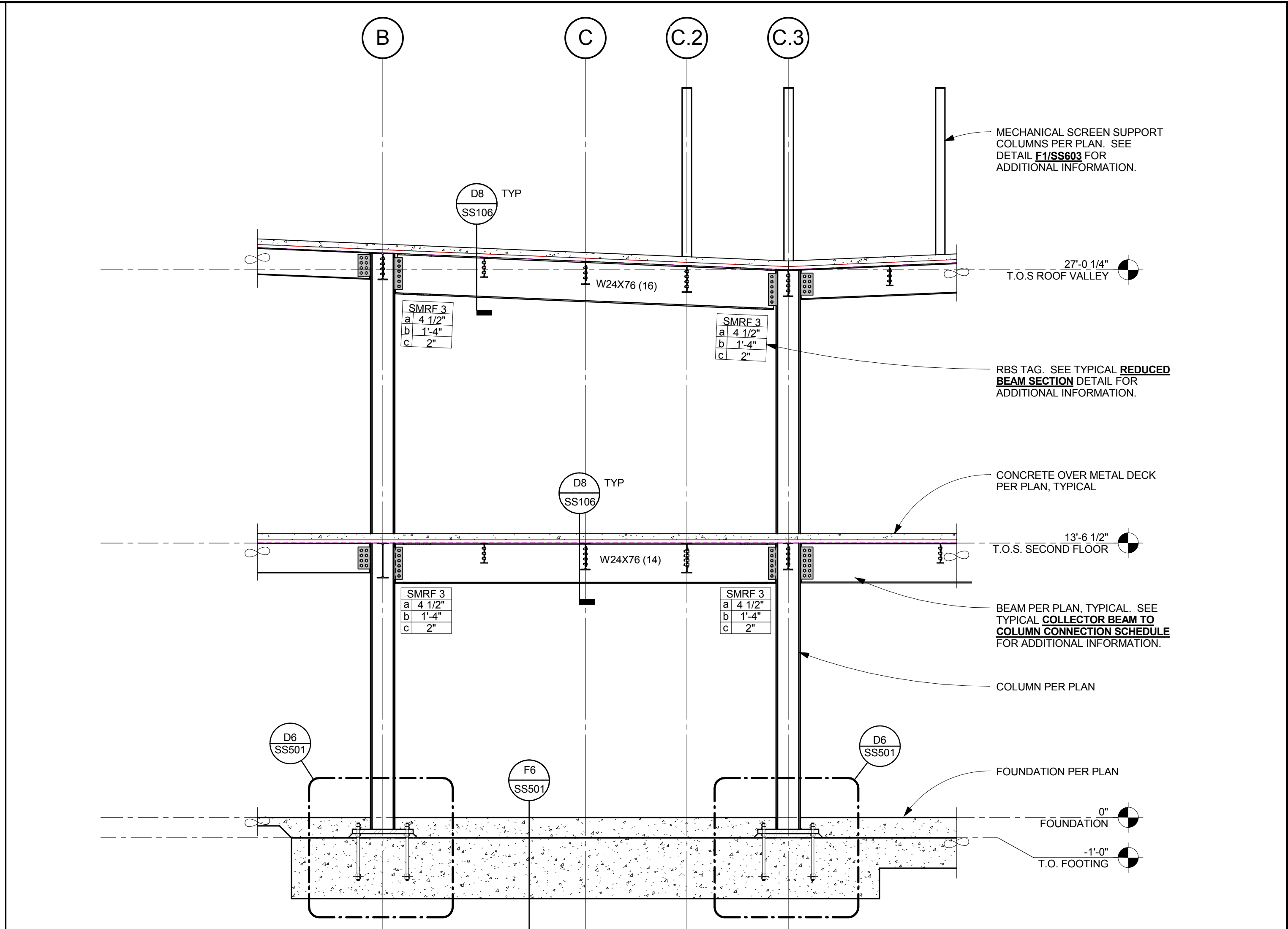
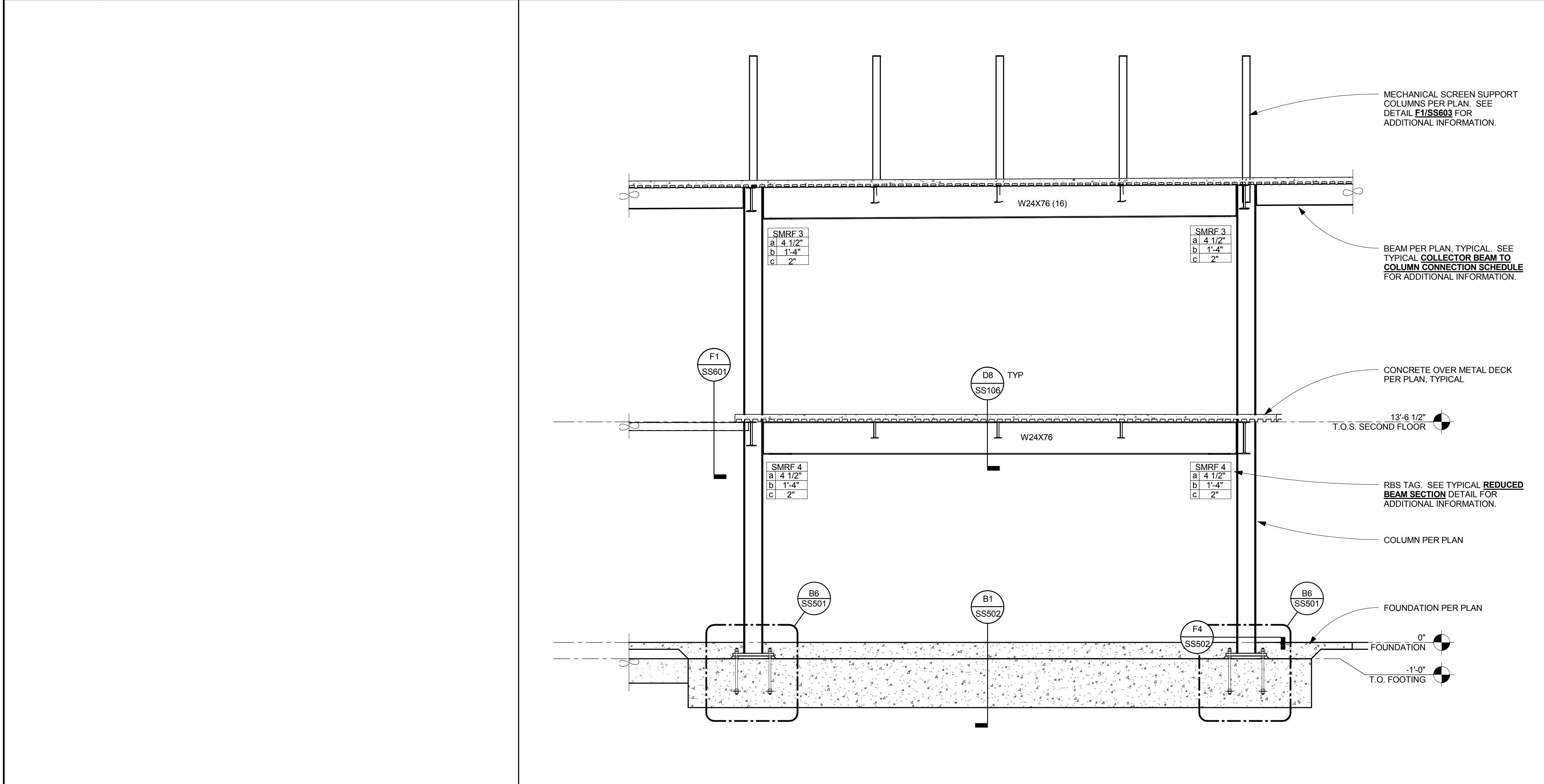


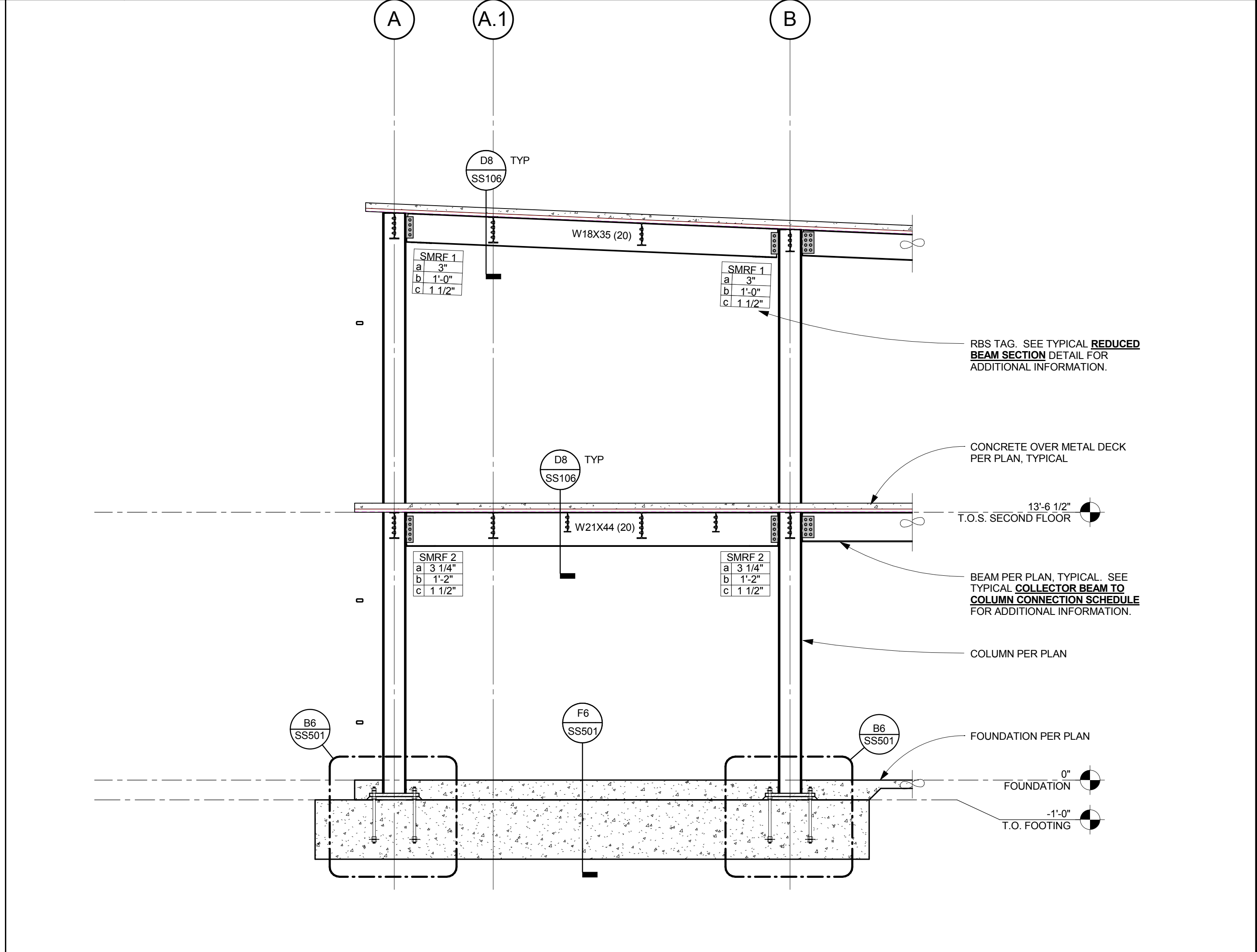
C1	NOT USED
C2	MF ELEVATION ON GRIDLINE 2





C6	MF ELEVATION ON GRIDLINE 6
----	----------------------------



F1	NOT USED
F2	MF ELEVATION ON GRIDLINE D



F6	MF ELEVATION ON GRIDLINE 4
----	----------------------------

<b>CONSULTANTS:</b>  <b>BROOKS-RANSOM ASSOCIATES</b> STRUCTURAL ENGINEERS CIVIL ENGINEERS WWW.BROOKSRANSOM.COM 7415 N. PALM AVE., SUITE 100 FRESNO, CALIFORNIA 93711 PHONE: 559-449-8440 FAX: 559-449-8404		<b>ARCHITECT/ENGINEERS:</b>  <b>HMC Architects</b> 1827 E. Fir Avenue / Studio 103 / Fresno, CA 93720 T 559 322 2444 / www.hmcarchitects.com HMC PROJECT #1393002-000		<b>Drawing Title</b> MOMENT FRAME ELEVATIONS  <b>Approved:</b> Project Director		<b>Project Title</b> Mental Health Psychosocial Rehab Recovery and Health Care for Homeless Veteran Center  <b>Location</b> 2615 E. CLINTON AVE, FRESNO, CA 93703  <b>Date</b> 08/11/2014  <b>Checked</b> Checker  <b>Drawn</b> Author		<b>Project Number</b> 570-217 <b>Building Number</b> 37 <b>Drawing Number</b> SS401 Dwg. 100 of 197		<b>Office of Construction and Facilities Management:</b>  Department of Veterans Affairs	
--	--	---	--	--	--	---	--	---	--	---	--