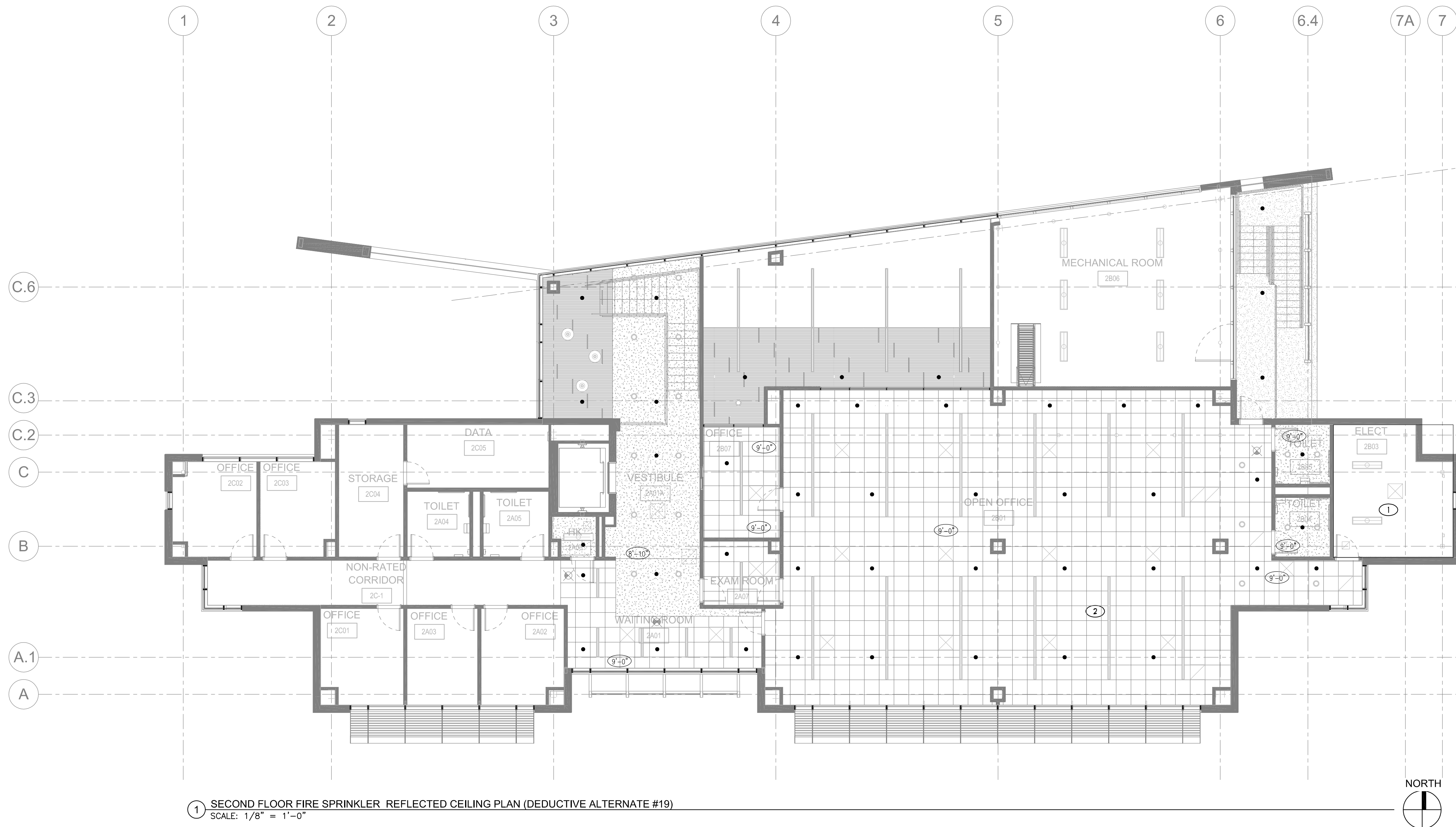


1 2 3 4 5 6 7 8 9



KEY NOTES

- 1 ELECTRICAL ROOM - DUAL INTERLOCK PREACTION SYSTEM
- 2 ALL PENDENT SPRINKLERS ARE TO BE IN THE CENTERLINE OF THE CEILING TILE.

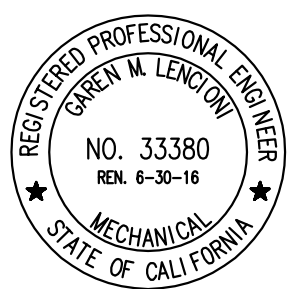
GENERAL NOTES

1. ITEMS SHOWN ON THIS PLAN DESCRIBE GENERAL LAYOUT REQUIREMENTS, AND ARE NOT INTENDED TO SHOW A COMPLETE LAYOUT OF REQUIRED FIRE PROTECTION SYSTEM PIPING AND COMPONENTS. REFER TO ARCHITECTURAL, MECHANICAL, AND PLUMBING SHEETS, FIRE PROTECTION SPECIFICATIONS, AS WELL AS OTHER PORTIONS OF THE CONTRACT DOCUMENTS FOR ADDITIONAL COORDINATION REQUIREMENTS.
2. THE LAYOUT REQUIREMENTS DESCRIBED IN THESE PLANS SHALL BE ADHERED TO AS CLOSELY AS POSSIBLE BUT SHALL NOT SUPERSEDE CODE CONSTRAINTS AND/OR REQUIREMENTS OF AUTHORITIES HAVING JURISDICTION (AHJ'S). WHERE CODE OR AHJ REQUIREMENTS SUPERSEDE ITEMS SHOWN ON THIS PLAN, CONTRACTOR SHALL INCLUDE ALL ASSOCIATED PROVISIONS IN THE BID, AND SHALL MAKE THEM AT NO ADDITIONAL COST TO OWNER. PROPOSED DEVIATIONS FROM THIS PLAN SHALL BE SUBJECT TO ENGINEER OF RECORD REVIEW AND APPROVAL PRIOR TO IMPLEMENTATION.
3. ALL AREAS OF THE BUILDING NOT COVERED BY NOTES HEREIN SHALL BE FULLY SPRINKLERED IN ACCORDANCE WITH SPECIFICATIONS, NFPA 13, 2010 ED., CITY OF FRESNO FIRE DEPARTMENT REQUIREMENTS, DEPARTMENT OF VETERANS AFFAIRS FIRE PROTECTION DESIGN STANDARDS AND CODE REQUIREMENTS.
4. WHERE PLAN INDICATES EXPOSED FIRE SPRINKLER PIPING DIRECTION OF LAYOUT, ASSOCIATED CONNECTED FIRE SPRINKLER PIPING RUNNING IN PERPENDICULAR DIRECTIONS SHALL BE INSTALLED ONLY IN CONCEALED LOCATIONS UNLESS INDICATED OTHERWISE.
5. INSTALLING CONTRACTOR TO FIELD VERIFY ALL EXISTING CONDITIONS AND IS RESPONSIBLE FOR PREPARING A DESIGN TO ACCOMMODATE ALL EXISTING CONDITIONS.
6. EXPOSED FIRE SPRINKLER SYSTEM PIPING SHALL BE RUN STRAIGHT AND TIGHT TO UNDERSIDE OF STRUCTURAL MEMBERS.

SYMBOLS AND DESCRIPTIONS

SYM	TYPE	FINISH	TEMP	K FACTOR	THRD	SIN *	MFG	MODEL	ESOUTCHEON
○	SSU	BRASS	200°	5.6	1/2"	VK300	VIKING	MICROFAST	N/A
●	INST SSP	CHROME	165°	5.6	1/2"	VK410	VIKING	MICROFAST	FLUSH

CONSULTANTS:



**LP Consulting Engineers, Inc.**  
895 W. Ashlan Ave, Suite 101 Clovis, CA 93612  
p. 559-348-2130 ~ f. 559-348-2131  
www.lpeengineers.com  
Job #: 11-1008

ARCHITECT/ENGINEERS:

**HMC Architects**

1827 E. Fir Avenue / Studio 103 / Fresno, CA 93720  
T. 559.322.2444 / www.hmcarchitects.com  
HMC PROJECT #1393002-000

Drawing Title

**SECOND FLOOR FIRE SPRINKLER  
REFLECTED CEILING PLAN  
(DEDUCTIVE ALTERNATE #19)**

Approved: Project Director

Project Title

**Mental Health Psychosocial  
Rehab Recovery and Health Care  
for Homeless Veteran Center**

Location

**2615 E. CLINTON AVE, FRESNO, CA 93703**

Date

08/11/2014

Checked

SA

Drawn

AB

Project Number

**570-217**  
Building Number  
37

Drawing Number

**FP321**

Office of  
Construction  
and Facilities  
Management:

