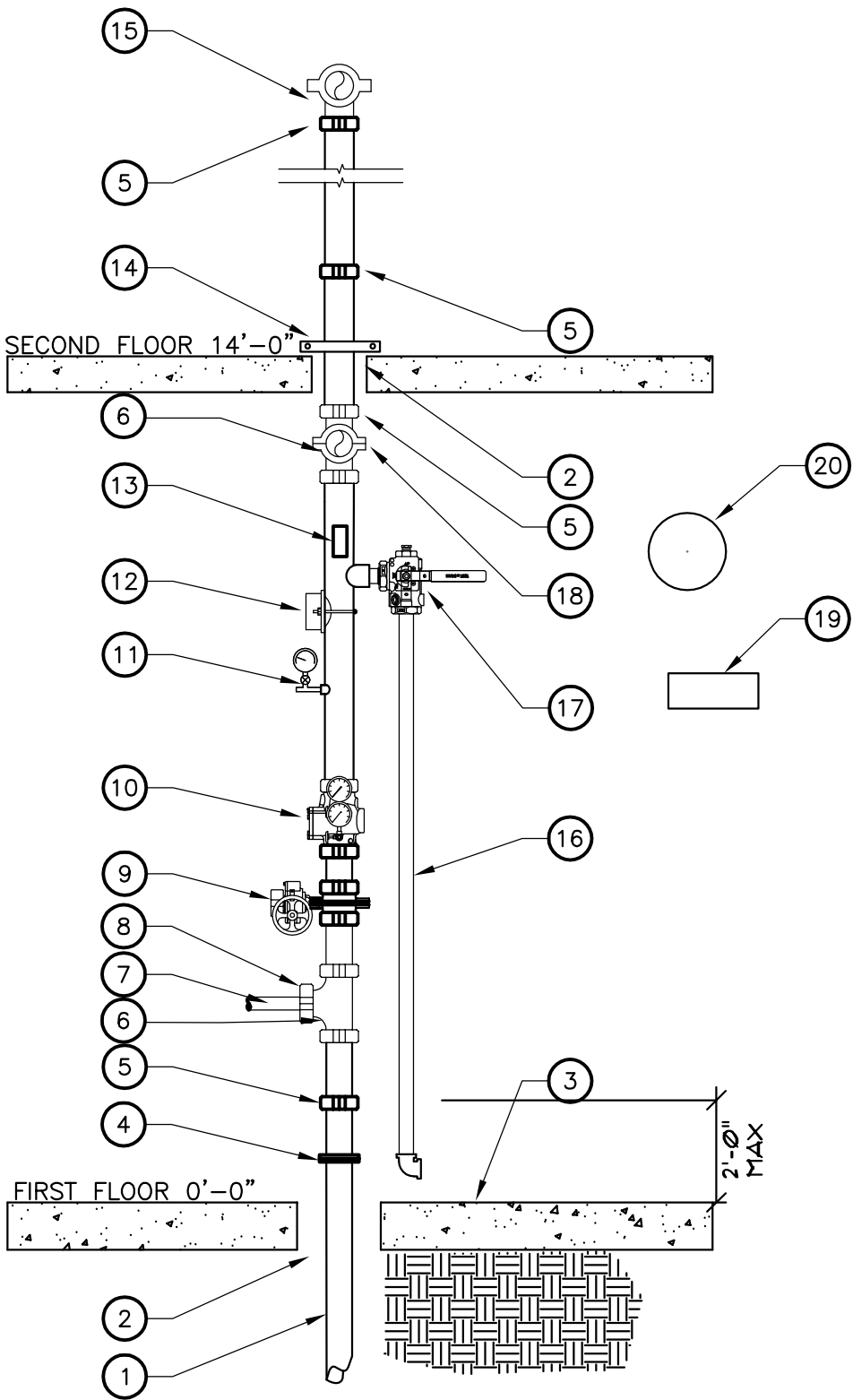


- 1. UNDERGROUND SUPPLY
- 2. 2" ANNULAR CLEARANCE
- 3. FINISHED FLOOR
- 4. FLANGE 8" ABOVE FINISHED FLOOR
- 5. FLEXIBLE COUPLING
- 6. 4" GROOVED TEE
- 7. SUPPLY TO 2" TOTALPAC2 SYSTEM
- 8. 4" X 2" REDUCING COUPLING
- 9. "KENNEDY" G300 4" GROOVED BUTTERFLY VALVE WITH TAMPER SWITCH (SUPERVISED CONTROL VALVE)
- 10. "NIKING" MODEL E-1 GROOVED EASY RISER SWING CHECK VALVE
- 11. 300# GAUGE WITH E-WAY VALVE AND PLUG
- 12. 4" FLOW SWITCH
- 13. HYDRAULIC CALC PLATE
- 14. AFCON #400 RISER PIPE CLAMP
- 15. 4" GROOVED 90° ELL
- 16. 2" DRAIN TO OUTSIDE
- 17. AGF TEST AN DRAIN - INSPECTORS' TEST AND DRAIN ASSEMBLY WITH 1/2" ORIFICE
- 18. SUPPLY TO FIRST FLOOR
- 19. SPARE HEAD BOX
- 20. 10" ELECTRIC BELL - MOUNTED ON EXTERIOR WALL



10 WET PIPE FIRE FSR  
FP410

NTS

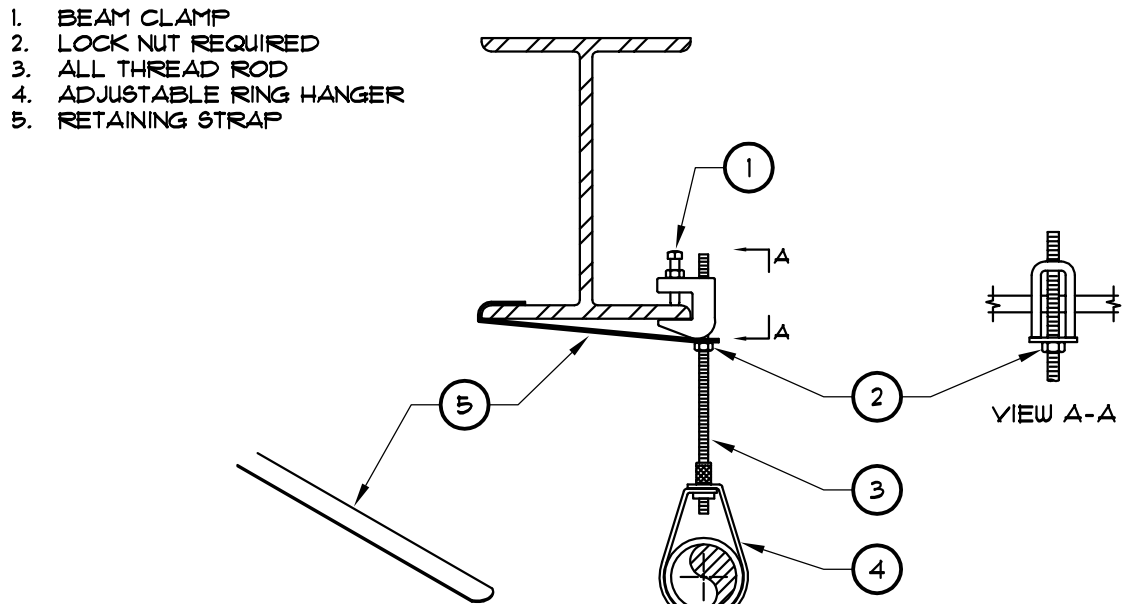
\*HANGER RODS TO BE INSTALLED TIGHT TO PIPE TO PREVENT UPWARD MOVEMENT\*

NOMINAL PIPE SIZE (in.)		3/4"	1"	1-1/4"	1-1/2"	2"	2-1/2"	3"	3-1/2"	4"	5"	6"	8"
STEEL PIPE EXCEPT THREADED LIGHTWALL		N/A	12-0	12-0	15-0	15-0	15-0	15-0	15-0	15-0	15-0	15-0	15-0
THREADED LIGHTWALL STEEL PIPE		N/A	12-0	12-0	12-0	12-0	12-0	12-0	N/A	N/A	N/A	N/A	N/A

NOMINAL PIPE SIZE (in.)		3/4"	1"	1-1/4"	1-1/2"	2"	2-1/2"	3"	3-1/2"	4"	5"	6"	8"
STEEL PIPE EXCEPT THREADED LIGHTWALL		N/A	3/8"	3/8"	3/8"	3/8"	3/8"	3/8"	3/8"	3/8"	1/2"	1/2"	1/2"
THREADED LIGHTWALL STEEL PIPE		N/A	3/8"	3/8"	3/8"	3/8"	3/8"	3/8"	3/8"	3/8"	N/A	N/A	N/A

7 HANGER CHART  
FP301

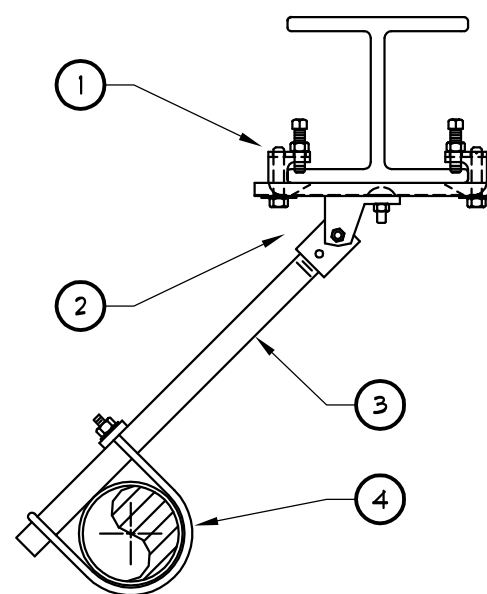
NT6



4 BOTTOM BEAM CLAMP, ROD, AND RING  
FP410

NTS

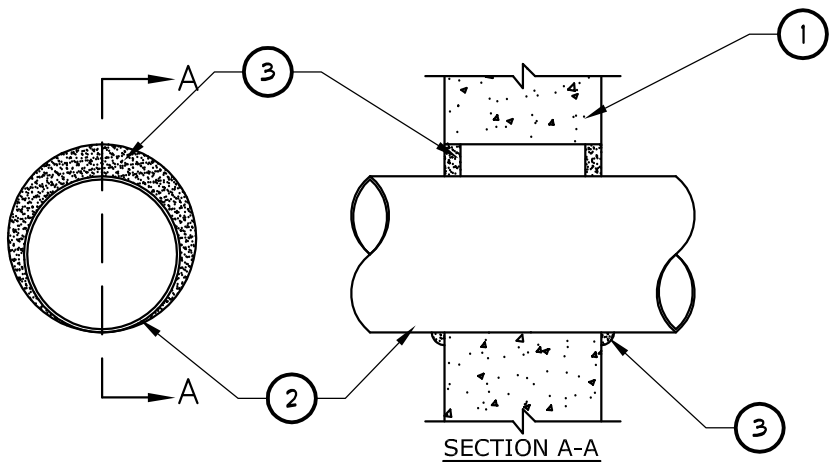
- 1. SWAY BRACE ATTACHMENT TO STEEL I-BEAM
- 2. SWIVEL SWAY BRACE FITTING
- 3. BRACE PIPE
- 4. FAST CLAMP SWAY BRACE ATTACHMENT



1 EQ1 SWAY BRACE ATTACHMENT TO STEEL I-BEAM  
FP410

NTS

SYSTEM NO. W-L-116.4  
F RATINGS - 1 AND 2 HR (SEE ITEMS 1 AND 4)  
T RATING - 0 HR

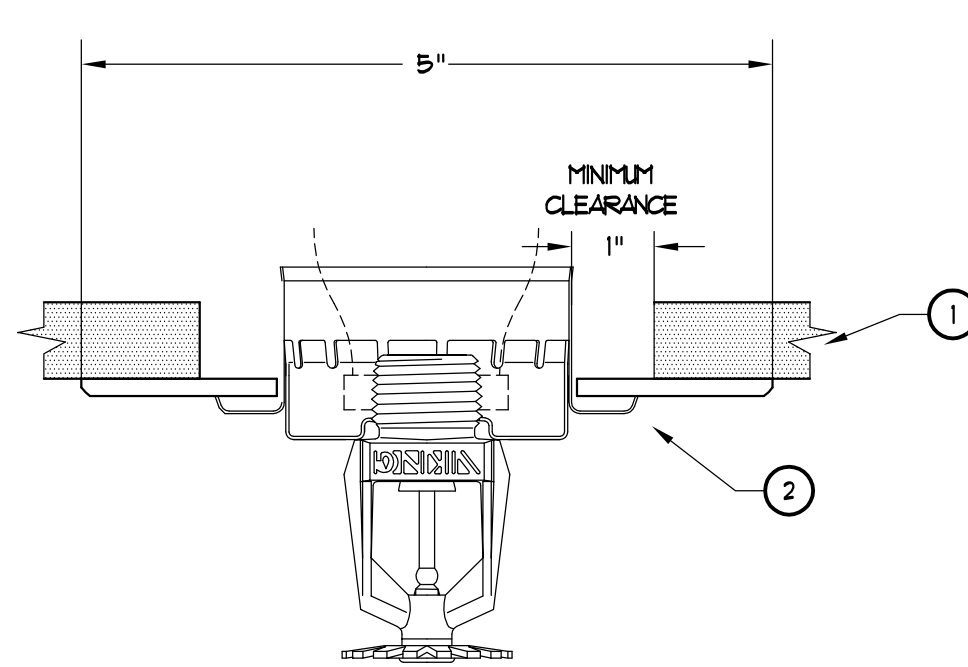


- 1. WALL ASSEMBLY - MIN 6 IN. (152 MM) THICK REINFORCED LIGHTWEIGHT OR NORMAL WEIGHT (100-150 PCF OR 1600-2400 KG/M3) CONCRETE WALL. WALL MAY ALSO BE CONSTRUCTED OF ANY UL CLASSIFIED CONCRETE BLOCKS\*. MAX DIAM OF OPENING IS 10-1/2 IN. (267 MM).
- 2. THROUGH PENETRANTS - ONE METALLIC PIPE, CONDUIT, TUBING OR FLEXIBLE METAL PIPE INSTALLED CONCENTRICALLY OR ECCENTRICALLY WITHIN OPENING. ANNULAR SPACE BETWEEN PENETRANT AND PERIPHERY OF OPENING TO BE MIN 0 IN. (POINT CONTACT) TO MAX 1-1/8 IN. (29 MM TO MAX 48 MM) PENETRANT TO BE RIGIDLY SUPPORTED ON BOTH SIDES OF WALL. THE FOLLOWING TYPES AND SIZES OF PENETRANTS MAY BE USED:
  - A. STEEL PIPE - NOM 8 IN. (203 MM) DIAM (OR SMALLER) SCHEDULE 5 (OR HEAVIER) STEEL PIPE
- 3. FILL/VOID OR CAVITY MATERIAL - CAULK OR SEALANT - MIN 5/8 IN. (16 MM) THICKNESS OF CAULK APPLIED WITHIN ANNULUS, FLUSH WITH BOTH SURFACES OF WALL. MIN 1/4 IN. (6 MM) DIAM BEAD OF CAULK APPLIED TO PENETRANT/WALL INTERFACE AT POINT CONTACT LOCATION ON BOTH SIDES OF WALL.
- 3M COMPANY - CP 25UB\*, IC 15UB\*, CAULK OR FB-3000 WT SEALANT.
- \*BEARING THE UL CLASSIFICATION MARKING

8 FIRE STOP DETAIL FOR CONCRETE WALLS  
FP-410

NT6

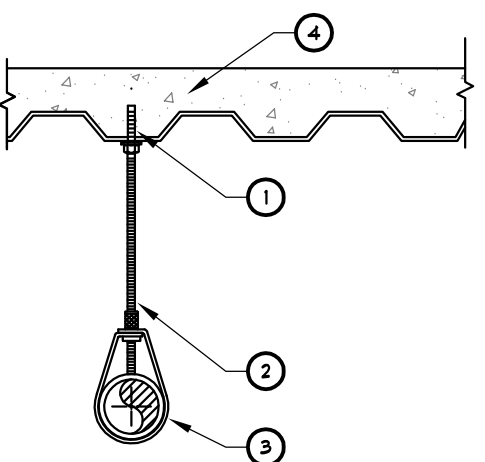
- 1. T-BAR CEILING
- 2. EXPANSION PLATE



9 PENDENT SPRINKLER THROUGH CEILING  
FP-410

NTS

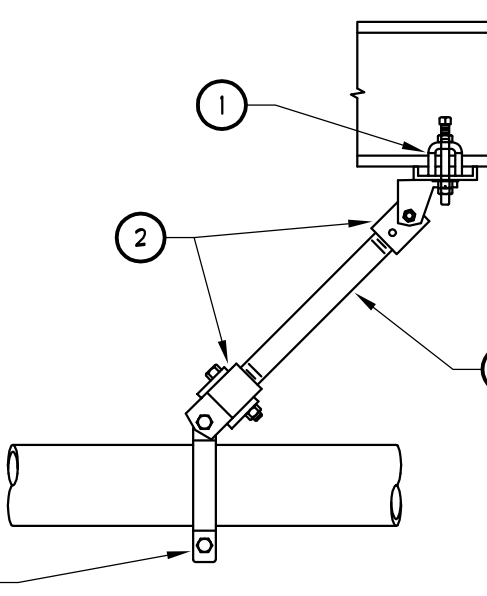
- 1. SIMPSON TITON HD ROD HANGER THD32TDRH (INSTALLED IN LOWER FLUTE OF DECKING)
- 2. ALL THREAD ROD (PER SCHEDULE)
- 3. ADJUSTABLE RING HANGER
- 4. CONCRETE ON METAL DECK



6 CONCRETE THREADED ROD HANGER  
FP410

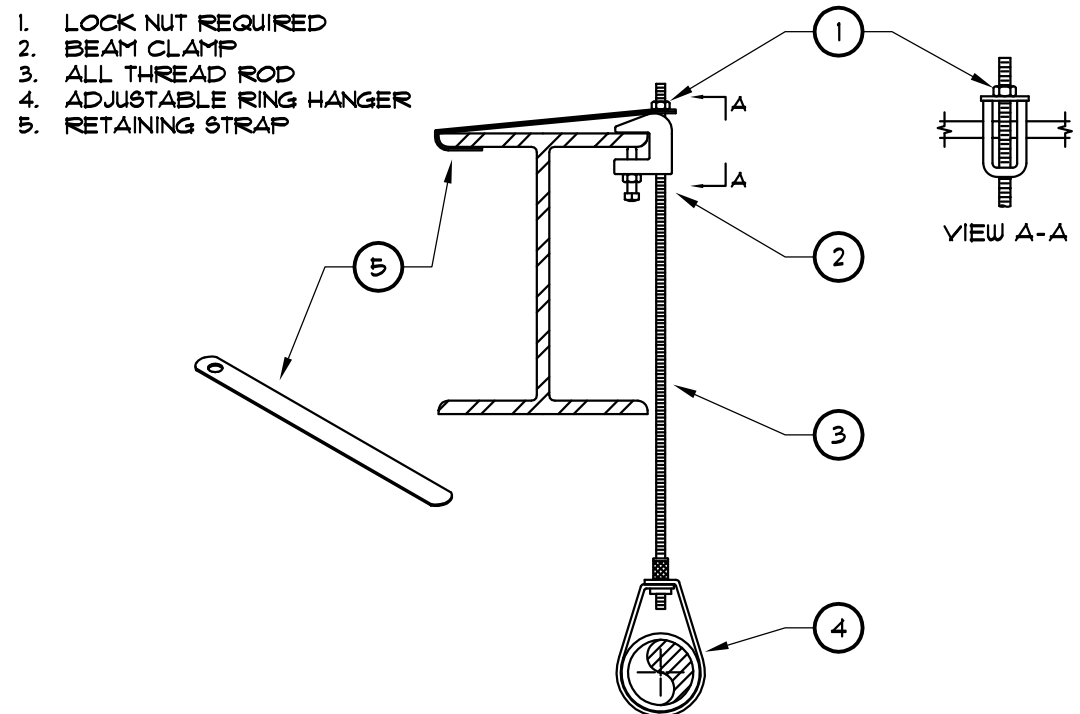
NTS

- 1. SWAY BRACE ATTACHMENT TO STEEL I-BEAM
- 2. SWIVEL SWAY BRACE FITTING
- 3. BRACE PIPE
- 4. PIPE CLAMP FOR SWAY BRACE



2 EQ2 SWAY BRACE ATTACHMENT TO STEEL I-BEAM  
FP410

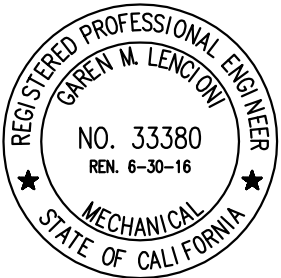
NTS



3 TOP BEAM CLAMP, ROD, AND RING  
FP410

NTS

CONSULTANTS:



**LP Consulting Engineers, Inc.**  
895 W. Ashlan Ave, Suite 101 Clovis, CA 93612  
p. 559-348-2130 ~ f. 559-348-2131  
www.lpeengineers.com  
Job #: 11-1008

ARCHITECT/ENGINEERS:

**HMC Architects**

1827 E. Fir Avenue / Studio 103 / Fresno, CA 93720  
T. 559.322.2444 / www.hmcarchitects.com  
HMC PROJECT #1393002-000

Drawing Title  
**FIRE SPRINKLER DETAILS**

Approved: Project Director

Project Title  
**Mental Health Psychosocial Rehab Recovery and Health Care for Homeless Veteran Center**

Location  
**2615 E. CLINTON AVE, FRESNO, CA 93703**

Date  
**08/11/2014**

Checked  
**SA**

Drawn  
**AB**

Project Number

**570-217**

Building Number

**37**

Drawing Number

**FP410**

Office of Construction and Facilities Management:

