

## KEY NOTES

- TEMPERATURE SENSOR WITH PLUS OR MINUS 5° TEMP. ADJUSTMENT FROM SET POINT MOUNTED AT +48" AFF. ALL WIRE SHALL BE INSIDE CONDUIT CONCEALED IN WALL & ATTIC. CONNECT TO MAIN TEMPERATURE CONTROLLER BY EQUIPMENT MANUFACTURE WITH BACNET CONNECTION TO EMS.
- 3"X10" SA & 3"X11" RA FLEX CONNECTIONS. SA SHALL TRANSITION AS SHOWN. PROVIDE 3"X16"X16" ACOUSTIC LINED MIXED AIR PLENUM AFTER RA FLEX CONNECTION.
- 4"X10" SA & 5"X11" RA FLEX CONNECTIONS. SA SHALL TRANSITION AS SHOWN. PROVIDE 5"X18"X18" ACOUSTIC LINED MIXED AIR PLENUM AFTER RA FLEX CONNECTION.
- CONNECT 4" OUTSIDE AIR DUCT TO 4" KNOCKOUT ON SIDE OF UNIT. COORDINATE EXACT LOCATION WITH UNIT MANUFACTURER.
- DUCTWORK PASSING THRU UNIT SERVICE CLEARANCE AREA SHALL ROUTE AS HIGH AS POSSIBLE.
- UNIT SERVICE CLEARANCE AREA.
- 14"X10" SA & 20"X11" RA FLEX CONNECTIONS. SA SHALL TRANSITION AS SHOWN. PROVIDE 20"X11"X11" ACOUSTIC LINED MIXED AIR PLENUM AFTER RA FLEX CONNECTION.
- 14"X10" SA & 20"X11" RA FLEX CONNECTIONS WITH SAME SIZE ACOUSTIC LINED ELBOUS, THEN TRANSITION TO GRILLE SIZE AND EXTEND TO GRILLE.
- 49"X15" SA & 49"X15" RA FLEX CONNECTIONS. SA SHALL TRANSITION AS SHOWN. PROVIDE 49"X16"X16" ACOUSTIC LINED MIXED AIR PLENUM AFTER RA FLEX CONNECTION.
- 12"X16" OA & 12"X16" EA DUCT RISERS TO ERY ON 2ND FLOOR. SEE SHEET MH220 FOR CONTINUATION. ALL OA DUCT SHALL BE INSULATED.
- 1" EXHAUST DUCT CONNECTION AT HOOD, OFFSET OVER IN ATTIC AND EXTENT UP THRU 2ND FLOOR. SEE SHEET MH220 FOR CONTINUATION.
- MAIN EMS PANEL AND DAIKIN I-TOUCH CONTROLLER WITH WEB BASED OPTION AND D10 PANEL.

## EQUIPMENT NOTE

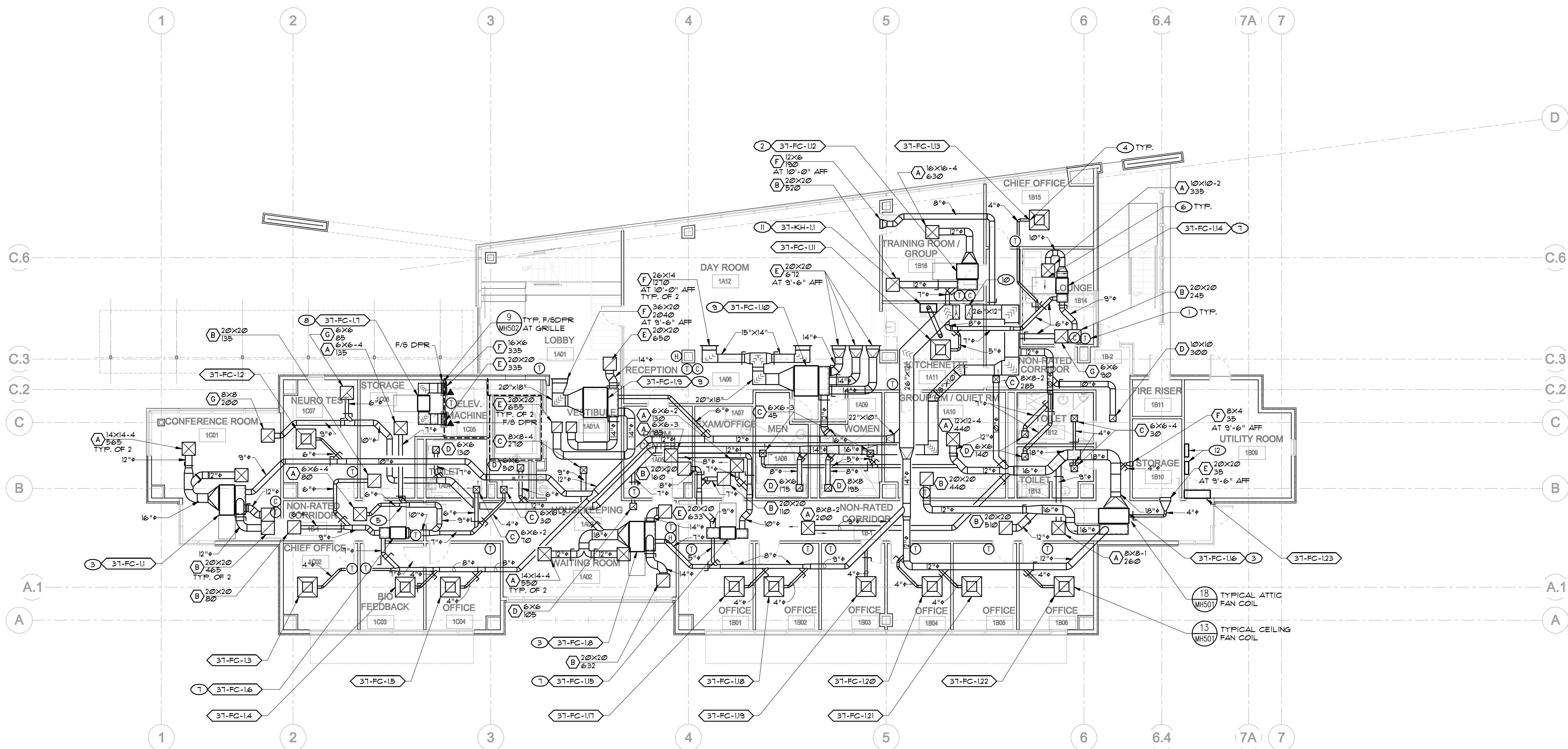
REFER TO SHEET MH601 FOR EQUIPMENT SCHEDULES. REFER TO SHEETS MH101 AND MH102 FOR PIPING SCHEMATICS AND WIRING DIAGRAMS. COORDINATE WITH GENERAL CONTRACTOR. ALL ACCESS LOCATIONS FOR EQUIPMENT AND T-BAR CEILING REQUIREMENTS AROUND EXPOSED CEILING MOUNT UNITS.

## DUCTWORK NOTE

SEE DETAILS 1 THRU 12 AND DETAIL 16 ON SHEET MH501 FOR TYPICAL DUCTWORK INSTALLATION.

## DOOR NOTE

ALL ROOM DOORS IN INTERIOR SHALL BE UNDERCUT 1 INCH EXCEPT FOR DAY ROOM/ KITCHEN, ELECT. ROOM AND ELEV. MACHINE ROOM. COORDINATE FOR GENERAL CONTRACTOR TO PROVIDE UNDERCUT.



1 FIRST FLOOR MECHANICAL PLAN  
SCALE: 1/8" = 1'-0"

NORTH

## CONSULTANTS:



**LP** Consulting Engineers, Inc.  
885 W. Ashlan Ave., Suite 101 Clovis, CA 93612  
p 559-348-2130 • f 559-348-2131  
www.lpengineers.com  
Job #: 11-1000.1

## ARCHITECT/ENGINEERS:

**HMC** Architects

1827 E. Fir Avenue / Studio 103 / Fresno, CA 93720  
T 559 322 2444 / www.hmcarchitects.com  
HMC PROJECT #1383002-000

Drawing Title  
**FIRST FLOOR MECHANICAL PLAN**

Approved: Project Director

Project Title  
**Mental Health Psychosocial  
Rehab Recovery and Health Care  
for Homeless Veteran Center**

Location  
**2615 E. CLINTON AVE, FRESNO, CA 93703**

Date  
**8/ 11/ 2014**

Checked  
**KK, GL**

Drawn  
**DN**

Project Number  
**570-217**  
Building Number  
**37**

Drawing Number  
**MH210**  
Dwg. of

Office of  
Construction  
and Facilities  
Management:

