

KEY NOTES

- TEMPERATURE SENSOR WITH PLUS OR MINUS 5° TEMP. ADJUSTMENT FROM SET POINT MOUNTED AT +48" AFF. ALL WIRE SHALL BE INSIDE CONDUIT CONCEALED IN WALL. 4" ATTIC. CONNECT TO MAIN TEMPERATURE CONTROLLER BY EQUIPMENT MANUFACTURE WITH BACKET CONNECTION TO EMS.
- 31"x10" SA & 38"x11" RA FLEX CONNECTIONS. SA SHALL TRANSITION AS SHOWN. PROVIDE 31"x14"x14" ACOUSTIC LINED MIXED AIR FLEX PLENUM AFTER RA FLEX CONNECTION.
- 41"x10" SA & 53"x11" RA FLEX CONNECTIONS. SA SHALL TRANSITION AS SHOWN. PROVIDE 53"x18"x18" ACOUSTIC LINED MIXED AIR FLEX PLENUM AFTER RA FLEX CONNECTION.
- CONNECT 4" OUTSIDE AIR DUCT TO 4" KNOCKOUT ON SIDE OF UNIT. COORDINATE EXACT LOCATION WITH UNIT MANUFACTURER.
- 14"x10" SA & 20"x11" RA FLEX CONNECTIONS. SA SHALL TRANSITION AS SHOWN. PROVIDE 20"x8"x11" ACOUSTIC LINED AIR FLEX PLENUM AFTER RA FLEX CONNECTION.
- 49"x15" SA & 48"x15" RA FLEX CONNECTIONS. SA SHALL TRANSITION AS SHOWN. PROVIDE 49"x16"x15" ACOUSTIC LINED MIXED AIR FLEX PLENUM AFTER RA FLEX CONNECTION.
- UNIT SERVICE CLEARANCE AREA.
- 10"x16" OA & 10"x16" EA RISERS THRU ROOF TO ERY ON ROOF. SEE SHEET MH230 FOR CONTINUATION. DUCTS ON THIS PLAN EXTEND OVER TO 2ND FLOOR ATTIC AS SHOWN.
- 12"x18" OA & 12"x18" EA FLEX CONNECTIONS. PROVIDE DUCT TRANSITIONS WITHIN CURB TO 12"x16" DUCTS AND DROP TO 1ST FLOOR. SEE SHEET MH210 FOR CONTINUATION. ALL OA DUCT SHALL BE INSULATED.
- 1" KITCHEN HOOD EXHAUST DUCT EXPOSED IN MECHANICAL ROOM FROM FIRST FLOOR WITH EXTENSION THRU ROOF. SEE SHEETS MH210 AND MH230 FOR CONTINUATION.

EQUIPMENT NOTE

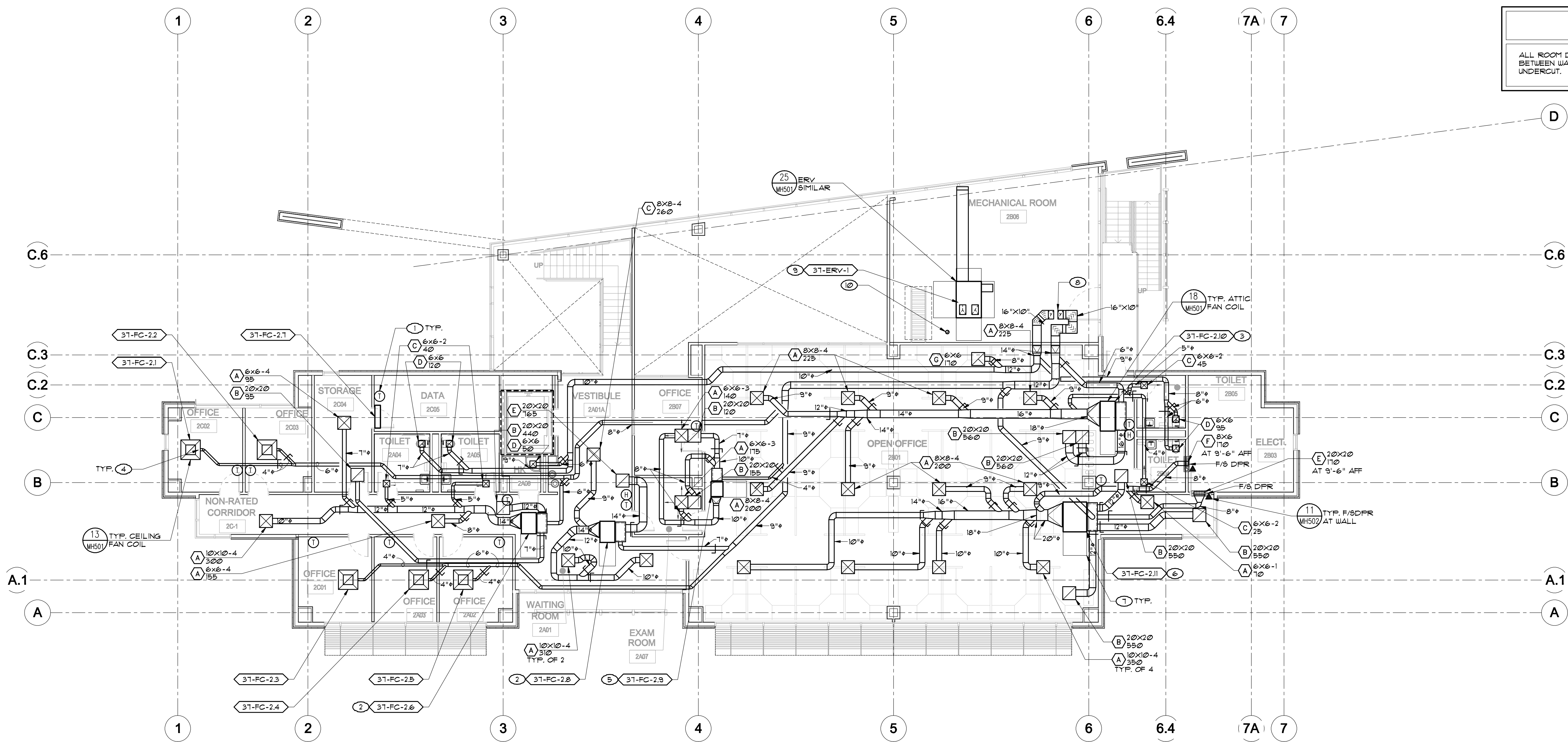
REFER TO SHEET MH601 FOR EQUIPMENT SCHEDULES. REFER TO SHEETS MP101 AND MP102 FOR PIPING SCHEMATICS AND WIRING DIAGRAMS. COORDINATE WITH GENERAL CONTRACTOR. ALL ACCESS LOCATIONS FOR EQUIPMENT AND T-BAR CEILING REQUIREMENTS AROUND EXPOSED CEILING MOUNT UNITS.

DUCTWORK NOTE

SEE DETAILS 1 THRU 12 AND DETAIL 16 ON SHEET MH501 FOR TYPICAL DUCTWORK INSTALLATION.

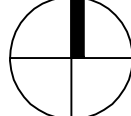
DOOR NOTE

ALL ROOM DOORS IN INTERIOR SHALL BE UNDERCUT 1 INCH EXCEPT FOR ELECTRICAL AND DOOR BETWEEN WAITING ROOM/ OPEN OFFICE. COORDINATE FOR GENERAL CONTRACTOR TO PROVIDE UNDERCUT.



1 SECOND FLOOR MECHANICAL PLAN
SCALE: 1/8" = 1'-0"

NORTH



CONSULTANTS:



LP Consulting Engineers, Inc.
885 W. Ashlan Ave, Suite 101 Clovis, CA 93612
p 559-346-2130 - f 559-346-2131
www.lpeengineers.com
Job #: 11-1088.1

ARCHITECT/ENGINEERS:

HMC Architects

1827 E. Fir Avenue / Studio 103 / Fresno, CA 93720
T 559 322 2444 / www.hmcarchitects.com
HMC PROJECT #1389302-000

Drawing Title
SECOND FLOOR MECHANICAL PLAN

Approved: Project Director

Project Title
**Mental Health Psychosocial
Rehab Recovery and Health Care
for Homeless Veteran Center**

Location
2615 E. CLINTON AVE, FRESNO, CA 93703

Date
8/ 11/ 2014

Checked
KK, GL

Drawn
DN

Project Number
570-217
Building Number
37

Drawing Number
MH220
Dwg. of

Office of
Construction
and Facilities
Management:

