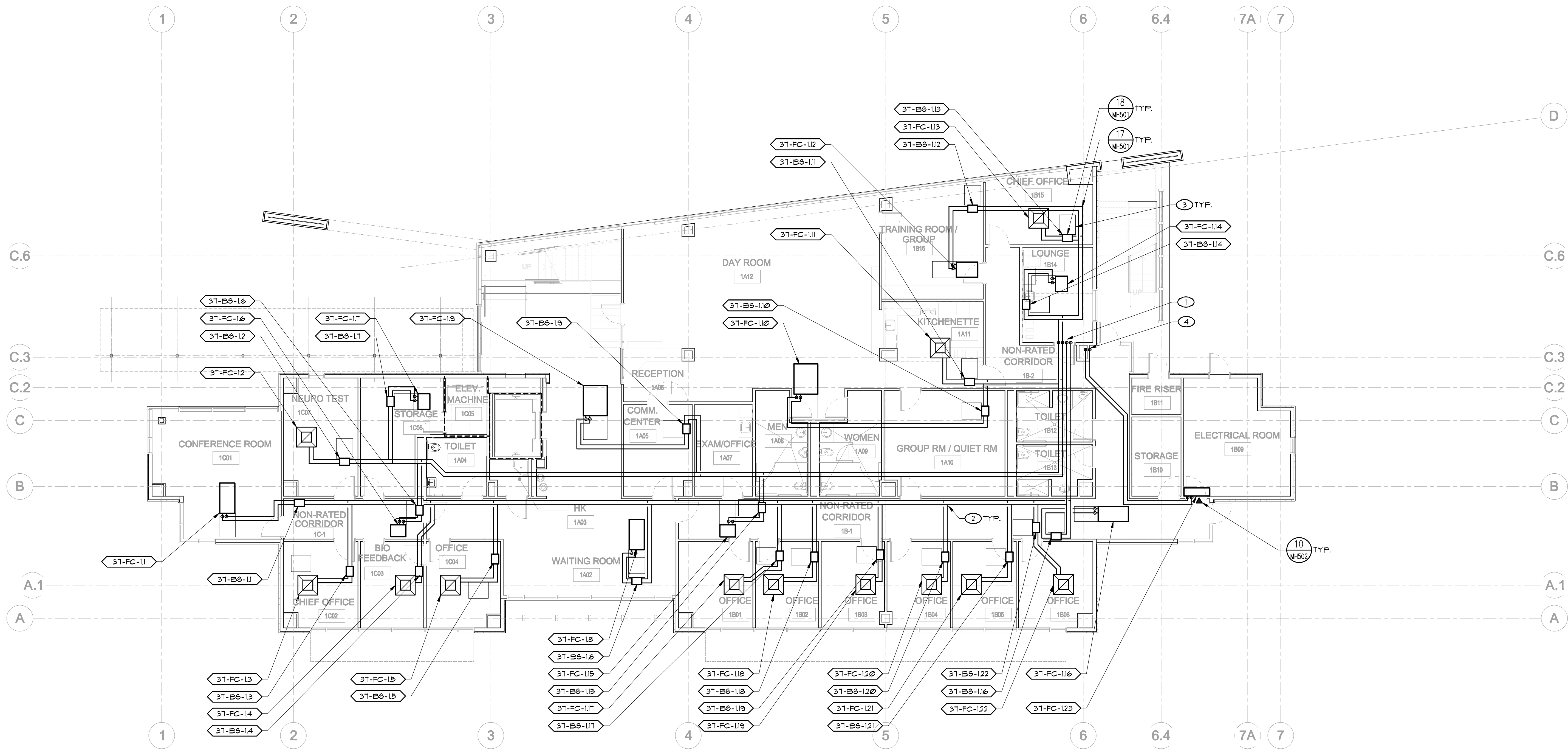


three inches = one foot
one and one half inches = one foot
one inch = one foot
three quarters inch = one foot
one half inch = one foot
three eighths inch = one foot
one quarter inch = one foot
one eighth inch = one foot
one sixteenth inch = one foot

- KEY NOTES**
- 1 REFRIGERANT PIPING DROPS FROM SECOND FLOOR, EXTEND IN ATTIC TO REINSET BRANCH, THEN BSB'S AND FC'S AS SHOWN. SEE SHEET MP101 FOR PIPE SIZES ON SCHEMATICS.
 - 2 REFRIGERANT Y-BRANCH FITTING IN ATTIC, SEE PIPING SCHEMATIC SHEET MP101 FOR MODEL.
 - 3 UNIT SERVICE CLEARANCE AREA.
 - 4 REFRIGERANT PIPING DROPS FROM SECOND FLOOR, EXTEND IN ATTIC TO FC AS SHOWN. CU-13/ FC-123 PIPES SIZED PER MANUF. RECOMMENDATIONS.

EQUIPMENT NOTE

REFER TO SHEET M4601 FOR EQUIPMENT SCHEDULES. REFER TO SHEETS MP101 AND MP102 FOR PIPING SCHEMATICS AND WIRING DIAGRAMS. COORDINATE WITH GENERAL CONTRACTOR. ALL ACCESS LOCATIONS FOR EQUIPMENT.



1 FIRST FLOOR MECHANICAL PLAN
SCALE: 1/8" = 1'-0"



| | | | | | | | | |
|-------------------------------------------------------------------------------------------------------------------------------------------------------------------------------------------|-------------------------------------------------------------------------------------------------------------------------------------------------------------------------------|-------------------------------------------------------|--|---------------------------------------------------------------------------------------------------------------|--|----------------------------------|--|-------------------------------------------------------------|
| CONSULTANTS: LP Consulting Engineers, Inc. 885 W. Ashlan Ave., Suite 101 Clovis, CA 93612 p 559-348-2130 - f 559-348-2131 www.lpeengineers.com Job #: 11-1000.1 | ARCHITECT/ENGINEERS: HMC Architects 1827 E. Fir Avenue / Studio 103 / Fresno, CA 93720 T 559 322 2444 / www.hmcarchitects.com HMC PROJECT #1383002-000 | Drawing Title FIRST FLOOR MECH. PIPING PLAN | | Project Title Mental Health Psychosocial Rehab Recovery and Health Care for Homeless Veteran Center | | Project Number 570-217 | | Office of Construction and Facilities Management |
| | | Approved: Project Director | | Location 2615 E. CLINTON AVE, FRESNO, CA 93703 | | Building Number 37 | | |
| | | Date 8/ 11/ 2014 | | Checked KK, GL | | Drawn DN | | |
| | | Drawing Number MP210 | | Dwg. of | | | | |