

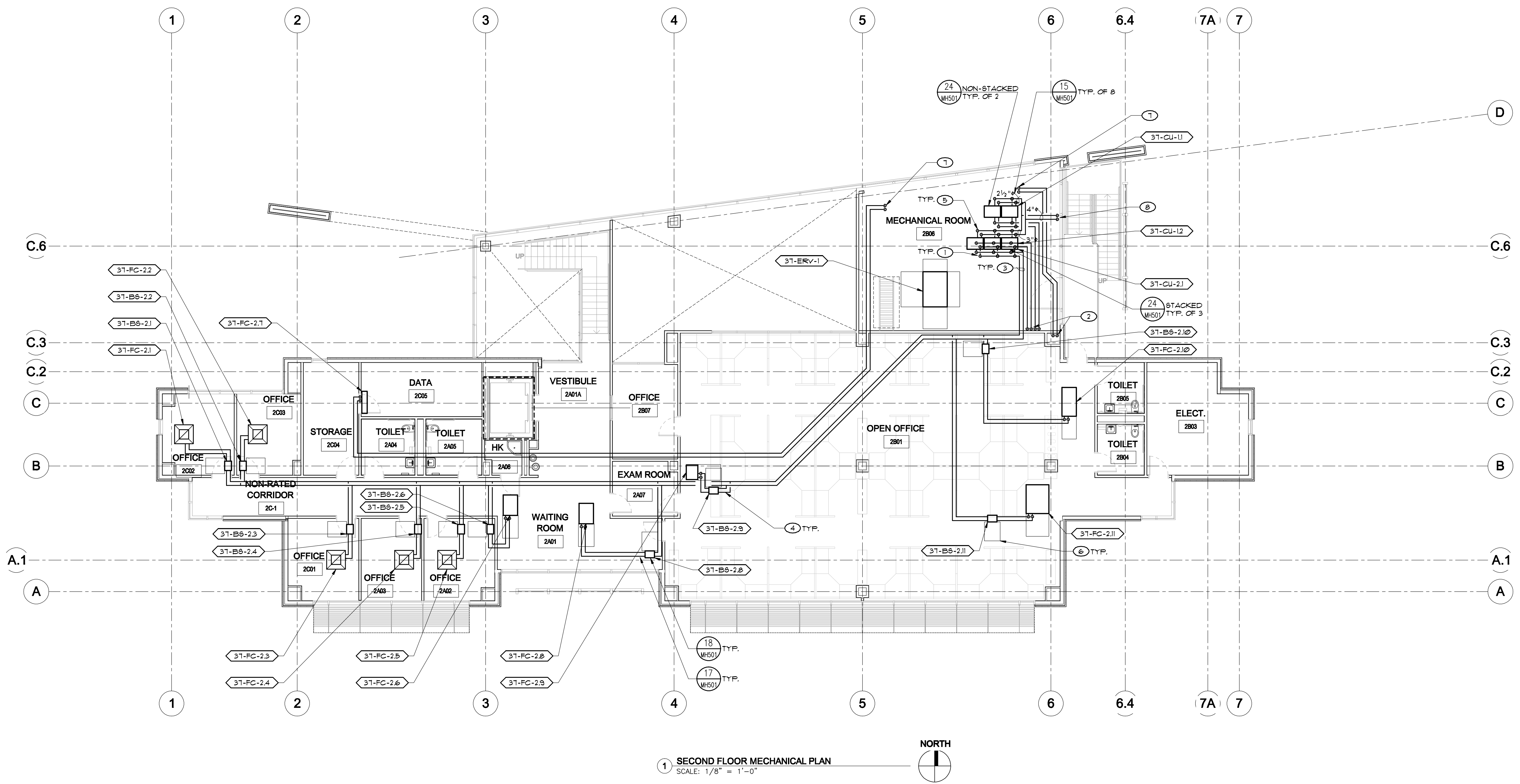
three inches = one foot
one and one half inches = one foot
one inch = one foot
three quarters inch = one foot
one half inch = one foot
three eighths inch = one foot
one quarter inch = one foot
one eighth inch = one foot
one sixteenth inch = one foot

KEY NOTES

- REFRIGERANT PIPING DROPS DOWN TO CU'S STACKED, EXTEND IN ATTIC AS SHOWN.
- REFRIGERANT PIPING DROPS DOWN TO FIRST FLOOR, SEE SHEET MP210 FOR CONTINUATION.
- REFRIGERANT PIPING IN SECOND FLOOR ATTIC, EXTEND TO REFRIG BRANCH, THEN BS'S AND FC'S AS SHOWN. SEE SHEET MP101 FOR PIPE SIZES ON SCHEMATICS.
- REFRIGERANT Y-BRANCH FITTING IN ATTIC, SEE PIPING SCHEMATIC SHEET MP101 FOR MODEL.
- CONDENSER WATER PIPING DROPS DOWN TO CU'S STACKED, EXTEND IN ATTIC AS SHOWN. SEE SHEET MP101 FOR PIPE SIZES ON SCHEMATICS.
- UNIT SERVICE CLEARANCE AREA.
- REFRIGERANT PIPING DROPS THRU ROOF FROM CU AND EXTEND IN ATTIC AS SHOWN.
- CONDENSER WATER PIPE DROPS THRU ROOF FROM CT'S AND EXTEND IN ATTIC AS SHOWN.

EQUIPMENT NOTE

REFER TO SHEET M4601 FOR EQUIPMENT SCHEDULES. REFER TO SHEETS MP101 AND MP102 FOR PIPING SCHEMATICS AND WIRING DIAGRAMS. COORDINATE WITH GENERAL CONTRACTOR. ALL ACCESS LOCATIONS FOR EQUIPMENT.



| | | | | | | | | | | | |
|---|--|---|--|---|--|---|--|---|--|--|--|
| CONSULTANTS: LP Consulting Engineers, Inc. 885 W. Ashlan Ave, Suite 101 Clovis, CA 93612 p 559-348-2130 - f 559-348-2131 www.lpeengineers.com Job #: 11-10000.1 | | ARCHITECT/ENGINEERS: HMC Architects 1827 E. Fir Avenue / Studio 103 / Fresno, CA 93720 T 559 322 2444 / www.hmcarchitects.com HMC PROJECT #1383002-000 | | Drawing Title SECOND FLOOR MECH. PIPING PLAN Approved: Project Director | | Project Title Mental Health Psychosocial Rehab Recovery and Health Care for Homeless Veteran Center Location 2615 E. CLINTON AVE, FRESNO, CA 93703 Date 8/ 11/ 2014 Checked KK, GL Drawn DN | | Project Number 570-217 Building Number 37 Drawing Number MP220 Dwg. of | | Office of Construction and Facilities Management: Department of Veterans Affairs | |
|---|--|---|--|---|--|---|--|---|--|--|--|