

A
three inches = one foot
one and one half inches = one foot
one inch = one foot
three quarters inch = one foot
one half inch = one foot
one eighth inch = one foot
one quarter inch = one foot
one eighth inch = one foot

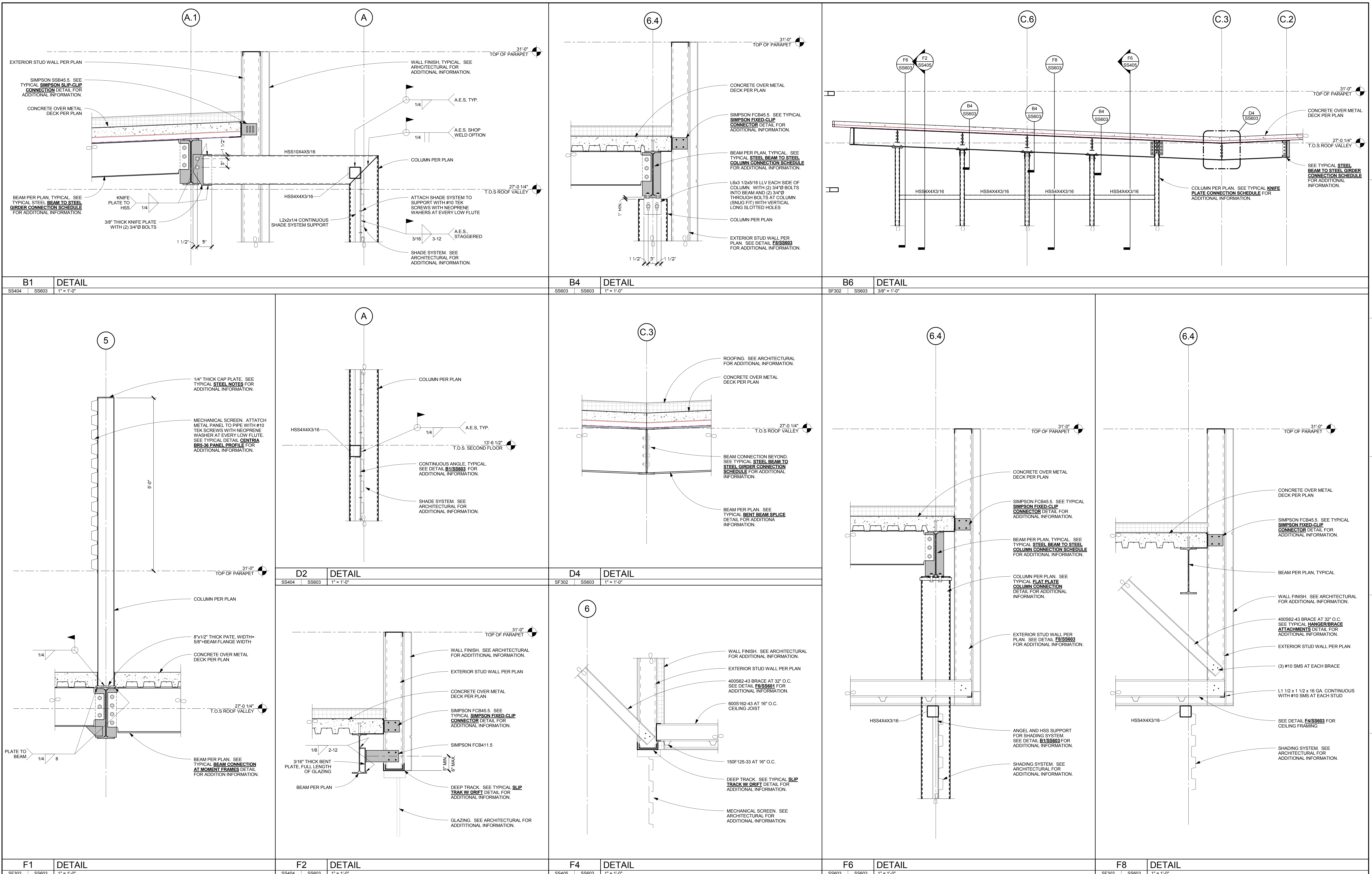
B
three inches = one foot
one and one half inches = one foot
one inch = one foot
three quarters inch = one foot
one half inch = one foot
one eighth inch = one foot
one quarter inch = one foot
one eighth inch = one foot

C
one inch = one foot
three quarters inch = one foot
one half inch = one foot
one eighth inch = one foot
one quarter inch = one foot
one eighth inch = one foot
one quarter inch = one foot
one eighth inch = one foot

D
one half inch = one foot
one eighth inch = one foot
one quarter inch = one foot
one eighth inch = one foot
one quarter inch = one foot
one eighth inch = one foot
one quarter inch = one foot
one eighth inch = one foot

E
one eighth inch = one foot
one quarter inch = one foot
one eighth inch = one foot
one quarter inch = one foot
one eighth inch = one foot
one quarter inch = one foot
one eighth inch = one foot
one quarter inch = one foot

F
one eighth inch = one foot
one quarter inch = one foot
one eighth inch = one foot
one quarter inch = one foot
one eighth inch = one foot
one quarter inch = one foot
one eighth inch = one foot
one quarter inch = one foot



F1 DETAIL SF302 SS603 1" = 1'-0"		F2 DETAIL SF404 SS603 1" = 1'-0"		F4 DETAIL SF405 SS603 1" = 1'-0"		F6 DETAIL SF302 SS603 1" = 1'-0"		F8 DETAIL SF302 SS603 1" = 1'-0"			
<div>CONSULTANTS:</div> <div>BROOKS-RANSOM ASSOCIATES STRUCTURAL ENGINEERS CIVIL ENGINEERS WWW.BROOKSRANSOM.COM 7415 N. PALM AVE., SUITE 100 FRESNO, CALIFORNIA 93711 PHONE: 559-449-8440 FAX: 559-449-8404</div> <div></div>		<div>ARCHITECT/ENGINEERS:</div> <div>HMC Architects 1827 E. Fir Avenue / Studio 103 / Fresno, CA 93720 T 559 322 2444 / www.hmcarchitects.com HMC PROJECT #1393002-000</div>		<div>Drawing Title</div> <div>FRAMING DETAILS</div> <div>Approved: Project Director</div>		<div>Project Title</div> <div>Mental Health Psychosocial Rehab Recovery and Health Care for Homeless Veteran Center</div> <div>Location 2615 E. CLINTON AVE, FRESNO, CA 93703</div> <div>Date 08/11/2014</div> <div>Checked Checker</div> <div>Drawn Author</div>		<div>Project Number</div> <div>570-217</div> <div>Building Number</div> <div>37</div> <div>Drawing Number</div> <div>SS603</div> <div>Dwg. 115 of 197</div>		<div>Office of Construction and Facilities Management</div> <div></div>	