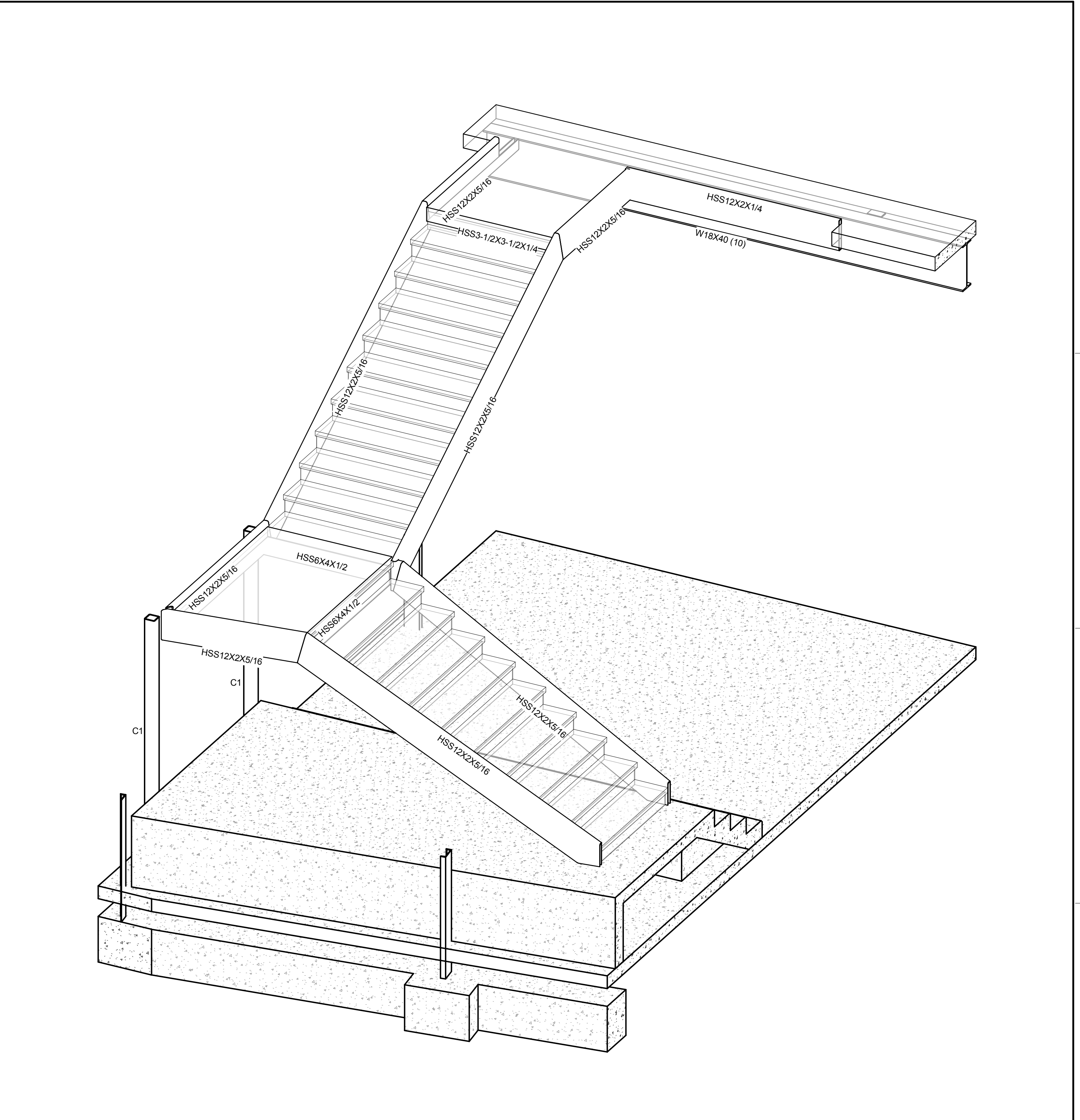
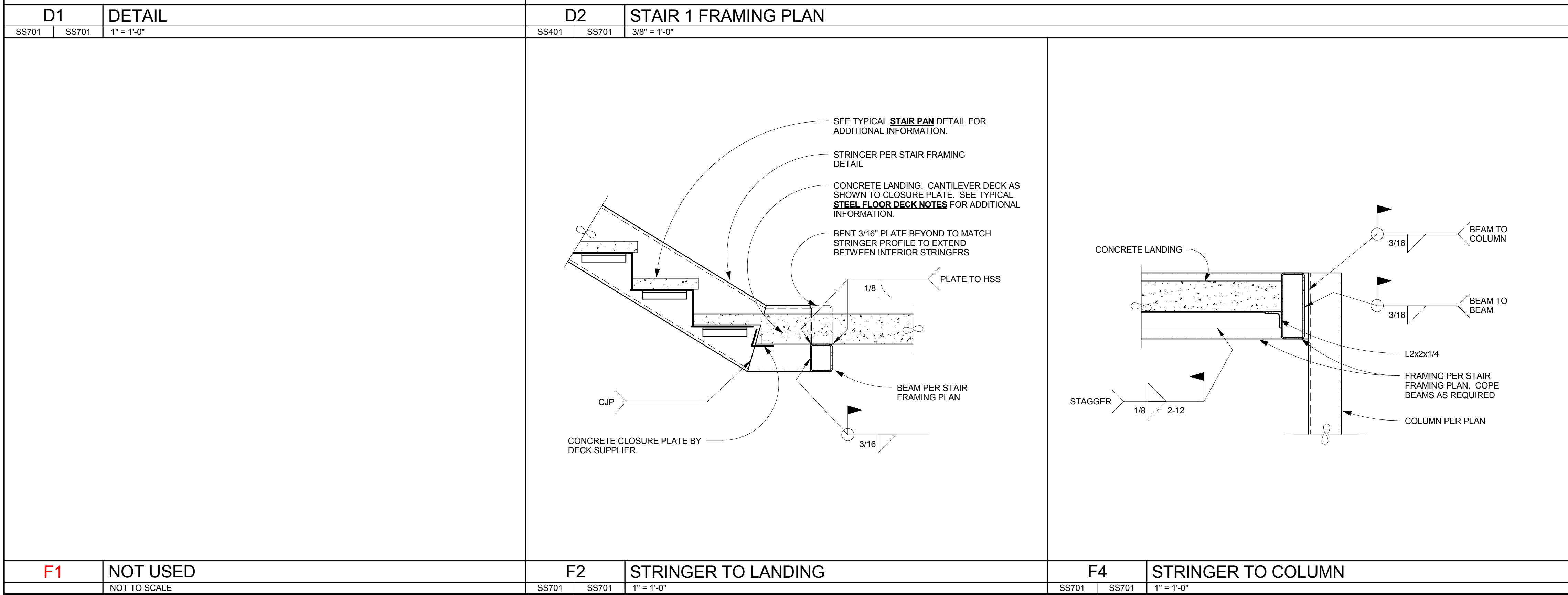
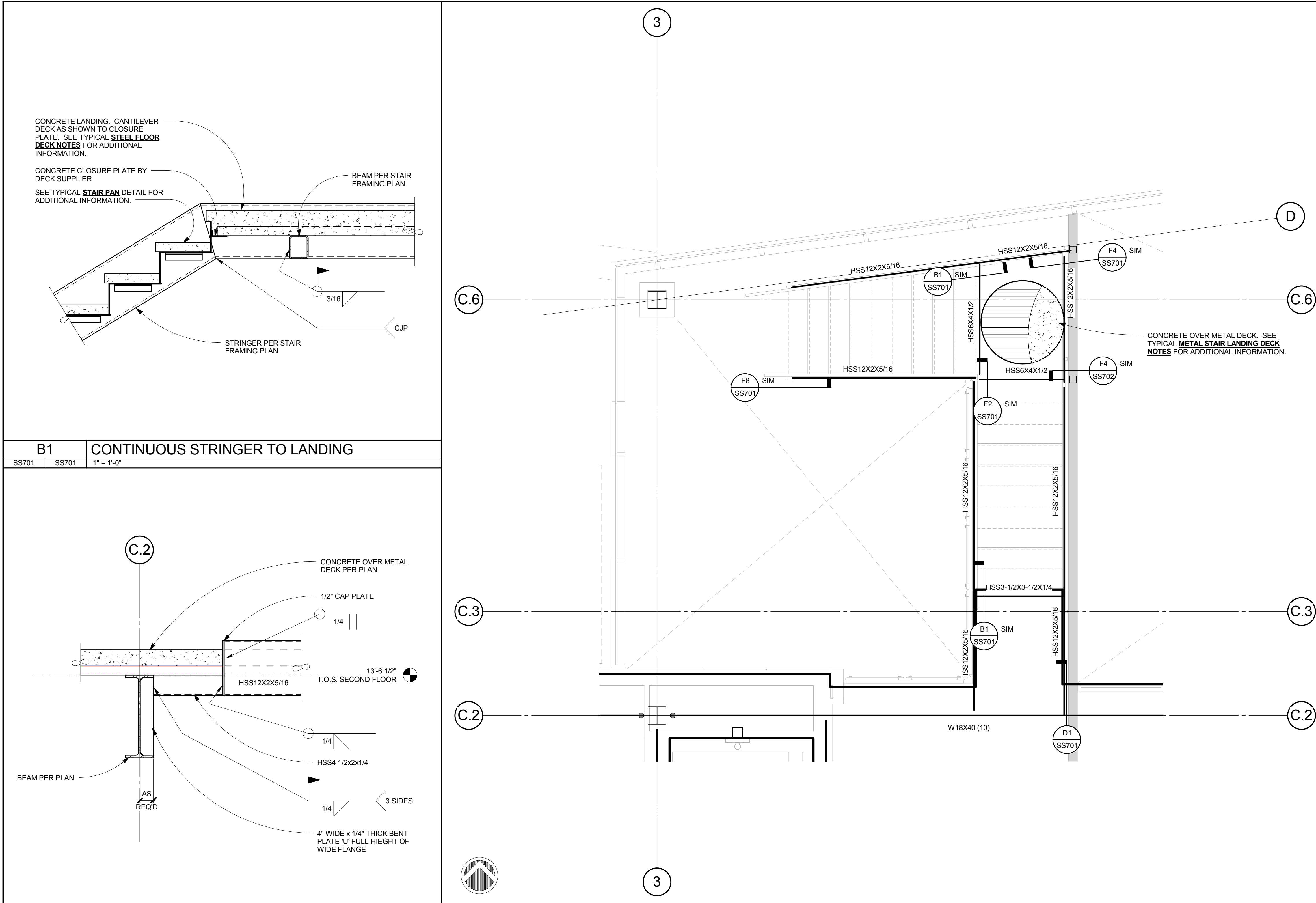
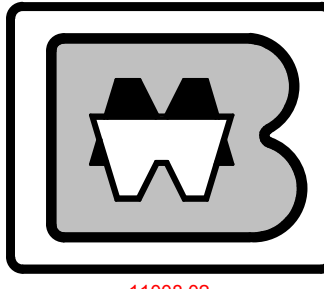



0
three inches = one foot
1
one and one half inches = one foot
2
one inch = one foot
3
one quarter inch = one foot
4
three quarters inch = one foot
5
one half inch = one foot
6
one eighth inch = one foot
7
one quarter inch = one foot
8
one eighth inch = one foot
9
one eighth inch = one foot
10
one eighth inch = one foot
11
one eighth inch = one foot
12
one eighth inch = one foot
13
one eighth inch = one foot
14
one eighth inch = one foot
15
one eighth inch = one foot
16
one eighth inch = one foot



F1 NOT USED NOT TO SCALE	F2 STRINGER TO LANDING SS701 SS701 1" = 1'-0"	F4 STRINGER TO COLUMN SS701 SS701 1" = 1'-0"	F6 STAIR PAN SS701 SS701 1" = 1'-0"	F8 STRINGER TO FOUNDATION SS701 SS701 1" = 1'-0"
CONSULTANTS:  BROOKS-RANSOM ASSOCIATES STRUCTURAL ENGINEERS CIVIL ENGINEERS WWW.BROOKSRANSOM.COM 7415 N. PALM AVE., SUITE 100 FRESNO, CALIFORNIA 93711 PHONE: 559-449-8404 FAX: 559-449-8404		ARCHITECT/ENGINEERS: HMC Architects 1827 E. Fir Avenue / Studio 103 / Fresno, CA 93720 T 559 322 2444 / www.hmcarchitects.com HMC PROJECT #1393002-000		Office of Construction and Facilities Management: 
Project Title: Mental Health Psychosocial Rehab Recovery and Health Care for Homeless Veteran Center Location: 2615 E. CLINTON AVE, FRESNO, CA 93703 Date: 08/11/2014 Checked: Checker Drawn: Author		Project Number: 570-217 Building Number: 37 Drawing Number: SS701 Dwg. 117 of 197		