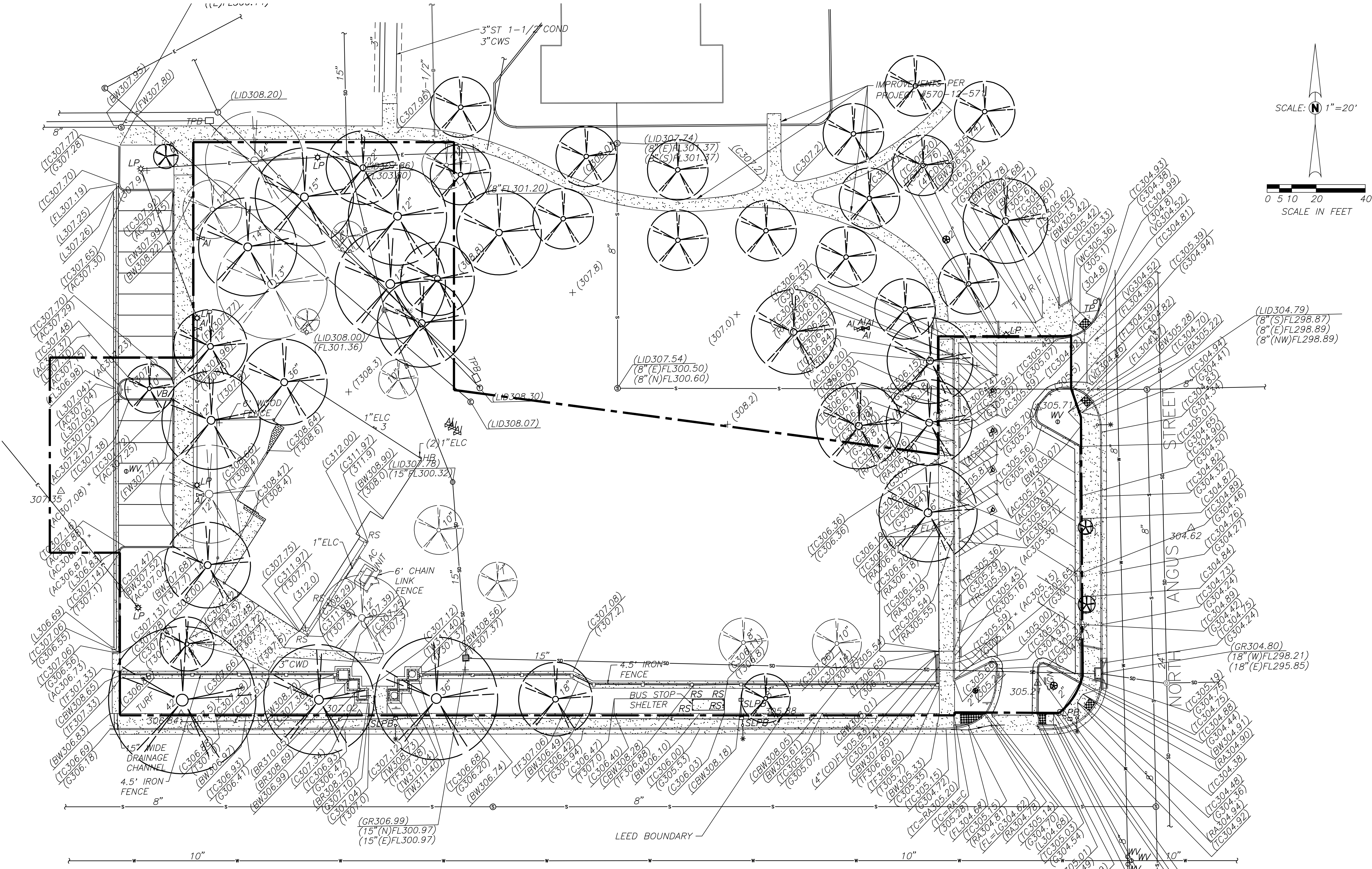


three inches = one foot
one and one half inches = one foot
one inch = one foot
three quarters inch = one foot
one half inch = one foot
one quarter inch = one foot
one eighth inch = one foot



- LEGEND:**
- AC ASPHALTIC CONCRETE
 - BR BRICK
 - BW BACK OF WALK
 - C CONCRETE
 - CBW CONCRETE BLOCK WALL
 - CD CURB DRAIN
 - CWD COOLING WATER DISPOSAL
 - CWS COLD WATER SUPPLY
 - ECA ELECTRIC CABINET
 - EPB ELECTRIC PULLBOX
 - ETA ELECTRIC TRANSFORMER
 - FF FINISHED FLOOR
 - FL FLOWLINE
 - FW FRONT OF WALK
 - G GUTTER
 - GR GRATE
 - GRA GRAVEL
 - L LIP OF GUTTER
 - LID LID OF UTILITY STRUCTURE
 - MS MOWSTRIP
 - RA RAMP
 - ST STEAM LINE
 - T TURF
 - TC TOP OF CURB
 - TF TOP OF FOOTING
 - TPB TELEPHONE PULLBOX
 - TRC TOP OF ROLLED CURB
 - TW TOP OF WALL
 - VA VAULT
 - VG VALLEY GUTTER
 - WC CURB RAMP
 - (335.21) ELEVATION
 - AI AUTOMATIC IRRIGATION VALVE
 - CO SEWER CLEANOUT
 - 312.55 SURVEY CONTROL POINT
 - CONCRETE WHEELSTOP
 - EG ELECTRICAL GROUND
 - 2"ELC ELECTRICAL CONDUIT; DIAMETER AS SHOWN
 - ELC ELECTRIC MANHOLE
 - 2"GAS GAS LINE; DIAMETER AS SHOWN
 - UNIVERSAL SYMBOL OF ACCESSIBILITY
 - CIRCULAR GRATE; ELEVATION AS NOTED
 - SQUARE GRATE; ELEVATION AS NOTED
 - HB HOSE BIBB
 - HR HANDRAIL
 - LP LIGHT POLE
 - 4"POST POST; DIAMETER AS SHOWN
 - 6"PVC PVC PIPE; DIAMETER AS SHOWN
 - RS ROOF SUPPORT
 - SIGN
 - STREET LIGHT
 - TP TELEPHONE POLE
 - SLPB STREET LIGHT PULLBOX
 - STORM DRAIN MANHOLE
 - STORM DRAIN INLET
 - SEWER MANHOLE
 - TELEPHONE MANHOLE
 - TREE; SPREAD SHOWN GRAPHICALLY AND TRUNK DIAMETER AS SHOWN
 - VB VACUUM BREAKER
 - 4"W WATER LINE; DIAMETER AS SHOWN
 - WV WATER VALVE
 - UNDERGROUND POWER LINE
 - UNDERGROUND COMMUNICATION LINE
 - SEWER LINE; SIZE AS SHOWN
 - WATER LINE; SIZE AS SHOWN
 - STORM DRAIN LINE; SIZE A SHOWN
 - DETECTABLE WARNINGS
 - LIMITS OF CONCRETE
 - BRICK PAVERS
 - BUILDING LIMITS

BENCHMARK:
TBM 146
CHISELED SQUARE ON TOP OF CURB, SOUTH SIDE OF CLINTON, 135 FEET WEST OF ANGUS.
ELEV. = 305.352 U.S.G.S. DATUM

NOTE:

- THIS TOPOGRAPHIC SURVEY LOCATES SPECIFIC PHYSICAL FEATURES OF THE SITE AND THEIR ELEVATION AS DETERMINED NECESSARY BY THE PROJECT ENGINEER. IT IS NOT A COMPLETE TOPOGRAPHIC SURVEY OF THE SITE. THE INFORMATION SHOWN REFLECTS THE DATA OBTAINED BY FIELD SURVEY CONDUCTED ON JANUARY 18, 2012 AND JUNE 28, 2013.
- THIS TOPOGRAPHIC SURVEY SHOWS AS-BUILT IMPROVEMENTS CONSTRUCTED PER PROJECT #570-12-571.

UTILITY NOTE:

UTILITY INFORMATION SHOWN HEREON IS BASED ON RECORD INFORMATION SUPPLIED TO THE ENGINEER BY UTILITY COMPANIES, PUBLIC AGENCIES AND THE PROPERTY OWNER, TOGETHER WITH OBSERVATION OF VISIBLE EVIDENCE BY A FIELD SURVEY. THE ENGINEER CAN MAKE NO GUARANTEE AS TO THE ACCURACY OR COMPLETENESS OF THE UNDERGROUND UTILITY FACILITIES SHOWN. PRIOR TO ANY SITE EXCAVATIONS, THE CONTRACTOR SHALL HIRE UTILITY LOCATOR TO LOCATE EXISTING UTILITIES. HAND DIG/POT HOLE TO VERIFY PRIOR TO EXCAVATION. COST TO BE PAID BY CONTRACTOR.

CONSULTANTS: Blair, Church & Flynn CONSULTING ENGINEERS 461 Davis Avenue, Suite 200 Davis, California 95618 Tel: (559) 526-4400 Fax: (559) 526-5800		ARCHITECT/ENGINEERS: HMC Architects 1827 E Fir Ave., Fresno, CA 93720 T: 559-522-2444 / www.hmcarchitects.com HMC PROJECT #1393002-000		Drawing Title TOPOGRAPHIC SURVEY		Project Title Mental Health Psychosocial Rehab Recovery and Health Care for Homeless Veteran Center		Project Number 570-217 Building Number 37		Office of Construction and Facilities Management: Department of Veterans Affairs	
				Approved: Project Director		Location 2615 E. CLINTON AVE, FRESNO, CA 93703		Drawing Number VF100 Dwg. 5 of 197			
						Date 08/11/2014		Checked RFA		Drawn JSD	