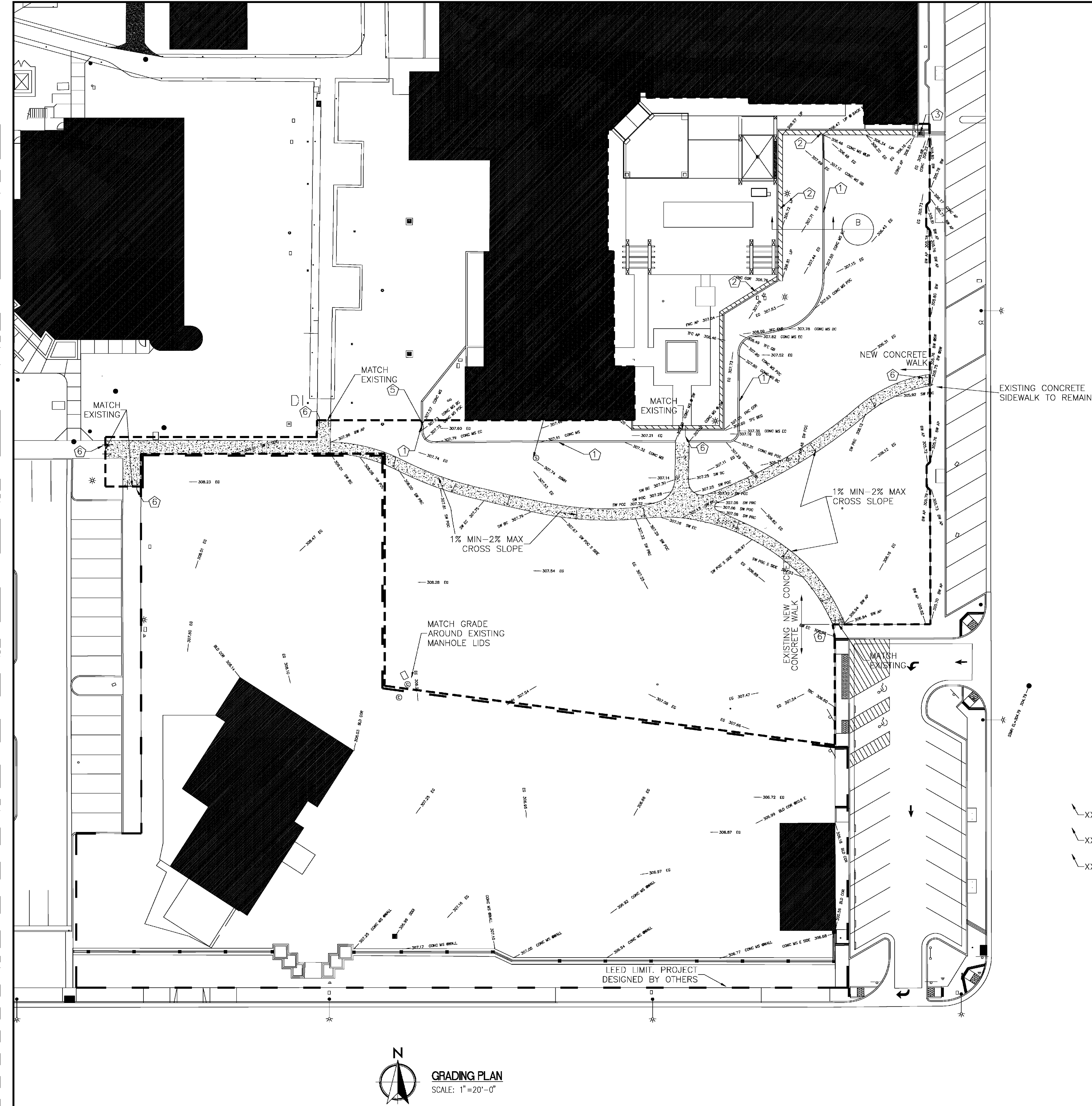


0 1 2 3 4 5 6 7 8 9 10 11 12 13 14 15 16
three eighths inch = one foot
one eighth inch = one foot
one quarter inch = one foot
one half inch = one foot
three quarters inch = one foot
one inch = one foot
one and one half inches = one foot
two inches = one foot
three inches = one foot



REFERENCES

- (E) CONCRETE VALLEY GUTTER
- (N) CONCRETE WALKWAY - 5' WIDE BY 4" THICK (typ) AS PER DETAIL D/CS501
- CONCRETE SLOPE
- GROUND SLOPE
- (N) 6" CONCRETE CURB (PLANTER)
- (E) CONCRETE VALLEY GUTTER
- (E) STEEL GRATE - DRAINAGE SYSTEM
- (N) 6" CONCRETE CURB (PLANTER)
- (E) CONCRETE CURB (PLANTER) TO REMAIN
- (N) 2-30" L #3 BAR W/ 4" MIN. EMBEDMENT
- XXX.XX C (N) PROPOSED ELEVATION AT CONCRETE
- XXX.XX ToC (N) TOP OF CURB ELEVATION
- XXX.XX G (N) PROPOSED GROUND (DIRT, GRASS) ELEVATION

AS-BUILT PLANS

Revisions Date	CONSULTANTS:		ARCHITECT/ENGINEER: PAULI ENGINEERING, INC. 2501 W. SHAW AVE., #121, FRESNO, CA 93711 PH: (559)237-4408 - FAX: (559)237-4409 E-MAIL: pauliengineering@bcgglobal.net www.pauliengineering.com	Drawing Title PROPOSED GRADING PLAN		Project Title DEMO BUILDINGS 10, 13 AND 14		Project Number 570-12-571		Office of Construction and Facilities Management Department of Veterans Affairs	
				Approved Project Director		Location 2615 E. Clinton Ave, Fresno, CA		Building Number OUTBUILDINGS			Drawing Number CS100
						Date 12/12/2012		Checked RFA		Drawn JSD	

NOT TO SCALE
FOR REFERENCE ONLY

Revisions Date	CONSULTANTS:		ARCHITECT/ENGINEERS:	Drawing Title TOPOGRAPHIC SURVEY REFERENCE		Project Title Mental Health Psychosocial Rehab Recovery and Health Care for Homeless Veteran Center		Project Number 570-217		Office of Construction and Facilities Management Department of Veterans Affairs	
				Approved Project Director		Location 2615 E. CLINTON AVE, FRESNO, CA 93703		Building Number 37			Drawing Number VF103
						Date 08/11/2014		Checked RFA		Drawn JSD	