

EQUIPMENT SCHEDULE

[illegible]

PLUMBING FIXTURE SCHEDULE

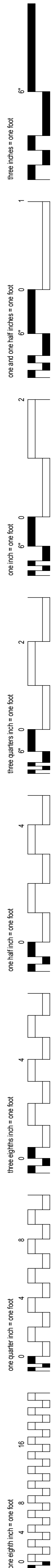
SYMBOL	DESCRIPTION	MINIMUM BRANCH PIPE SIZE					REMARKS
		HW (IN)	CW (IN)	W (IN)	TRAP (IN)	V (IN)	
P-101	WATER CLOSET	-	1	4	INTEGRAL	2	WATER CLOSET - VITROUS CHINA FLOOR MOUNTED, REAR OUTLET MEETING ADA HEIGHT, WITH DUAL ACTION FLUSH VALVE
P-102	WATER CLOSET	-	1	4	INTEGRAL	2	WATER CLOSET - VITROUS CHINA FLOOR MOUNTED, REAR OUTLET MEETING ADA HEIGHT, WITH BEDPAN LUGS, FLUSH VALVE, AND PULL DOWN BEDPAN WASHER
P-201	URINAL ADA	-	3/4	2	INTEGRAL	2	URINAL - WALL HUNG, FLUSH VALVE, 1 GPF, MOUNTED TO MEET ADA ACCESSIBLE HEIGHT.
P-401	LAVATORY	1/2	1/2	2	1 1/2	2	LAVATORY - WALL HUNG, VIT. CHINA, ADA ACCESSIBLE, SELF-METERING FAUCET.
P-402	LAVATORY	1/2	1/2	2	1 1/2	2	LAVATORY - INTEGRAL TO COUNTER, BY OTHERS, ADA ACCESSIBLE, SELF-METERING FAUCET
P-403	LAVATORY	1/2	1/2	2	1 1/2	2	LAVATORY - INTEGRAL TO COUNTER, BY OTHERS. GOOSENECK FAUCET W/ HARD WIRED SENSOR CONTROLS.
P-501	SERVICE SINK	1/2	1/2	2	1 1/2	2	SERVICE SINK - TERRAZZO FLOOR MOUNTED CORNER BASIN WITH STAINLESS STEEL CAP, WALL MOUNTED UTIL. FAUCET W/ 5 FOOT HOSE, INTEGRAL VACUUM BREAKER, DRAIN W/ GRATE
P-508	SINK	1/2	1/2	2	1 1/2	2	HANDWASH SINK - INTEGRAL TO COUNTER BY OTHERS, W/ HARD WIRED SENSOR CONTROLS.
P-509	SINK	1/2	1/2	2	1 1/2	2	
P-510	SINK	1/2	1/2	2	1 1/2	2	HANDWASH SINK - INTEGRAL TO COUNTER BY OTHERS. W/ HARD WIRED SENSOR CONTROLS.
P-511	SINK	1/2	1/2	2	1 1/2	2	NURSE'S SINK - WALL HUNG, VIT. CHINA, GOOSENECK FAUCET HARD WIRED SENSOR CONTROLS.
P-512	SINK	1/2	1/2	2	1 1/2	2	STAFF ROOM SINK - INTEGRAL TO COUNTER BY OTHERS. W/ SWING SPOUT AND LEVER HANDLES
P-707	EMERGENCY STATION	-	1-1/4	2	2	2	COMBINATION EYEFACE WASH AND SHOWER SAFETY STATION W/ ABS PLASTIC SHOWER HEAD, EYEFACE WASH W/ STAINLESS STEEL BOWL, AND COVER, AND (4) SPRAY HEADS.
	SINK	1/2	1/2	2	1 1/2	2	PATIENT ROOM SINK - INTEGRAL TO COUNTER, BY OTHERS. GOOSENECK FAUCET W/ HARD WIRED SENSOR CONTROLS.
	SINK	1/2	1/2	2	1 1/2	2	LOUNGE ROOM SINK - INTEGRAL TO COUNTER BY OTHERS, W/ SWING SPOUT AND LEVER HANDLES AND GARBAGE DISPOSER. SEE EQUIP. SCHEDULE FOR DATA
	SINK	1/2	1/2	2	1 1/2	2	UTIL. ROOM SINK - INTEGRAL TO COUNTER BY OTHERS W/ GOOSENECK SPOUT AND WRISTBLADE HANDLES
	SINK	1/2	1/2	2	1 1/2	2	DECONTAMINATION SINK - INTEGRAL TO COUNTER BY OTHERS. PROVIDE GOOSENECK SPOUT, WRIST BLADE HANDLES, GRID DRAINS, STOPS, P-TRAPS, AND SUPPLIES.
	NURSE STATION SINK	1/2	1/2	2	1 1/2	2	NURSE STATION SINK - INTEGRAL TO COUNTER, SINK PROVIDED BY OTHERS. PROVIDE ROUGH-INS, GOOSENECK FAUCET W/ HARD WIRE SENSOR CONTROLS, AND FINAL CONNECTIONS.
	SINK	1/2	1/2	2	1 1/2	2	PROVIDE ROUGH-IN, GOOSENECK FAUCET W/ HARD WIRED SENSOR CONTROLS, AND FINAL CONNECTIONS. SINK BY GC.
	CUP SINK	1/2	1/2	2	1 1/2	2	CUP SINK - INTEGRAL TO COUNTER BY OTHERS.
	DI SINK	-	1/2	2	1 1/2	2	DI WATER SINK - INTEGRAL TO COUNTER BY OTHERS W/ GOOSENECK POLYPRO CHEM RESIST. FAUCET W/ HOSE BARB END. "DI WATER SUPPLY ONLY."
	LARGE COMPARTMENT SINK	1/2	1/2	2	1 1/2	2	LARGE COMPARTMENT SINK - INTEGRAL TO COUNTER BY OTHERS W/ GOOSENECK SPOUT AND WRISTBLADE HANDLES
	CLINIC SINK	1/2	1	4	INTEGRAL	2	CLINIC SINK - WALL HUNG WITH BED PAN WASHER
	SHOWER	1/2	1/2	2	1 1/2	2	PATIENT SHOWER - HAND-HELD SHOWER HEAD W/ SLIDE BAR, PRESSURE BALANCED MIXING VALVE, DRAIN W/ GRATE, ADA ACCESSIBLE.
	SHOWER	1/2	1/2	2	1 1/2	2	STAFF SHOWER - FIXED HEAD PLUS HAND-HELD SHOWER HEAD W/ SLIDE BAR, PRESSURE BALANCED MIXING VALVE, DRAIN W/ GRATE, ADA ACCESSIBLE.
	MOP RECEPTOR	1/2	1/2	2	1 1/2	2	MOP RECEPTOR - TERRAZZO FLOOR MOUNTED CORNER BASIN WITH STAINLESS STEEL CAP, WALL MOUNTED UTIL. FAUCET W/ 5 FOOT HOSE, INTEGRAL VACUUM BREAKER, DRAIN W/ GRATE
	BATHTUB	3/4	3/4	2	1 1/2	2	CART WASH- WALL MOUNTED STAINLESS STEEL HOSE CABINET W/ HOSE, SPRAY NOZZLE AND INTEGRAL VACUUM BREAKER, DRAIN W/ GRATE
	ELECTRIC WATER COOLER	-	3/4	2	1 1/2	2	DRINKING FOUNTAIN - BARRIER FREE WALL MOUNTED W/ DUAL HEIGHT FOUNTAINS, ADA ACCESSIBLE.
	PATIENT CARE MODULE	1/2	1	4	1 1/2	2	PATIENT CARE MODULE - CONCEALED FIXED TOILET, HANDWASHING SINK, GOOSENECK FAUCET W/ HARDWIRED SENSOR CONTROLS.
	SCRUB SINK	1/2	1/2	2	1 1/2	2	SCRUB SINK - WALL MOUNTED, SUPPLIED BY EQUIPMENT PLANNER PROVIDE WATER AND WASTE HOOKUPS
	SCRUB SINK	3/4	3/4	2	1 1/2	2	SCRUB SINK - WALL MOUNTED, SUPPLIED BY EQUIPMENT PLANNER PROVIDE WATER AND WASTE HOOKUPS
	DECK DRAIN	-	-	2	-	-	DECK DRAIN - 2" -
	FLOOR DRAIN	-	1/2	2	2	2	FLOOR DRAIN - PROVIDE TRAP PRIMER PIPE AND FITTING -
	FLOOR DRAIN	-	1/2	3	3	2	FLOOR DRAIN - PROVIDE TRAP PRIMER PIPE AND FITTING (KITCHEN)
	FLOOR DRAIN	-	1/2	4	4	2	FLOOR DRAIN - PROVIDE TRAP PRIMER PIPE AND FITTING
	FLOOR SINK	-	1/2	4	4	2	FLOOR SINK - PROVIDE TRAP PRIMER PIPE AND FITTING
	FLOOR SINK	-	1/2	3	3	2	FLOOR SINK - PROVIDE TRAP PRIMER PIPE AND FITTING
	FLOOR SINK	-	1/2	2	2	2	FLOOR SINK - PROVIDE TRAP PRIMER PIPE AND FITTING
	DIALYSIS BOX	-	1/2	2	1 1/2	2	DIALYSIS BOX - CW HOOKUP W/ DRAIN. PROVIDE TRAP PRIMER PIPE AND FITTING.
	HOSE BIBB	-	3/4	-	-	-	HOSE BIBB - CW HOOKUP W/ VACUUM BREAKER
	DRINKING FOUNTAIN	-	3/4	2	1 1/2	2	DRINKING FOUNTAIN - BARRIER FREE WALL MOUNTED W/ DUAL HEIGHT FOUNTAINS, ADA ACCESSIBLE.
	WATER FILTER	-	1/2	-	-	-	WALL MOUNTED W/ REPLACEABLE CARTRIDGES

NOTES:

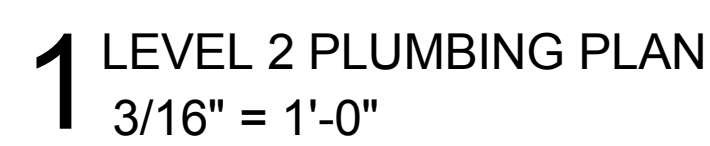
1. ALL FAUCETS FOR SINKS AND LAVATORIES SHALL BE PROVIDED WITH LAMINAR FLOW STREAM SPOUTS (NON-AERATING TYPE)
2. LAVATORY FAUCET FLOW SHALL BE LIMITED TO A MAXIMUM OF 0.5 GPM.
3. ALL LAVATORY AND SINK FAUCETS SHALL BE IN COMPLIANCE WITH THE AB-1953 LEAD-FREE REQUIREMENTS.

100% CONSTRUCTION DOCUMENTS

[illegible]

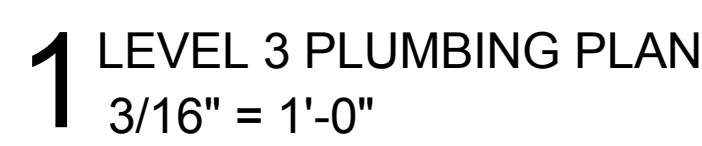


Department of
Veterans Affairs



SHEET NOTES:

Department of
Veterans Affairs



SHEET NOTES:

CONSULTANTS:



ARCHITECT/ENGINEERS:



HILLIARD ARCHITECTS, INC
251 Post Street, Suite 620
San Francisco, CA 94108-5017
Tel 415 989 6400, Fax 415 989 3056
www.HilliardArchitects.com

	Drawing Title
--	---------------

ROOF LEVEL PLUMBING PLAN

Approved: Project Director

	Project Title
--	---------------

**MED SPECIALTIES
BUILDING 648**

	Location

Date

☐ Checked

Drawn

Project Number

612-122

Building Number

648

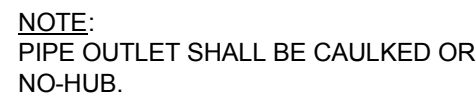
Drawing Number

P103

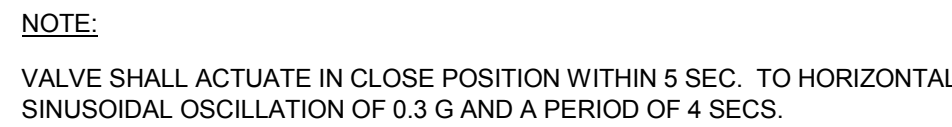
Dwg.	0
------	---

Office of
Construction
and Facilities
Management

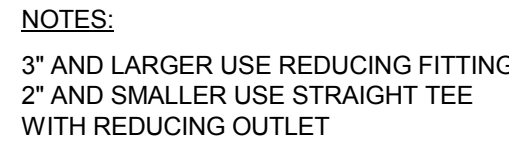




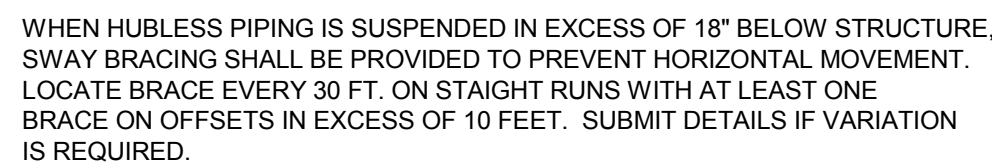
10



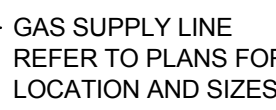
7



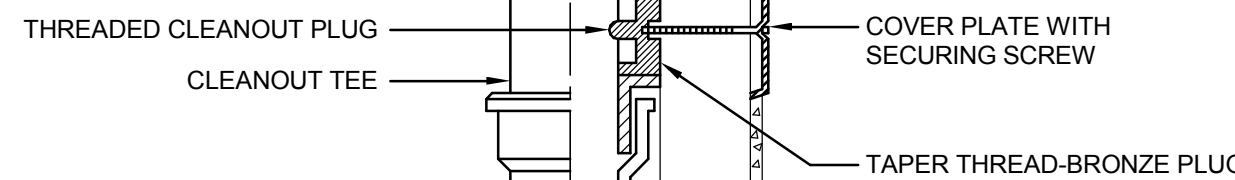
4



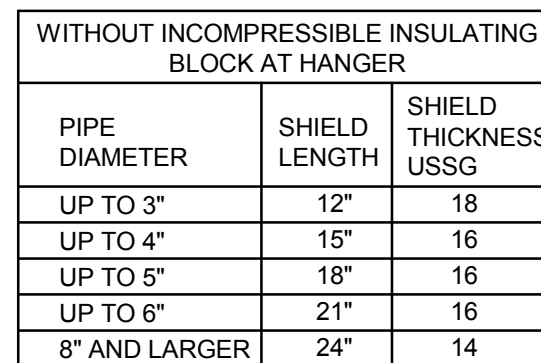
1



(8)

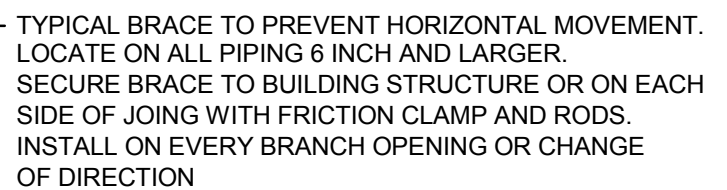


(5)

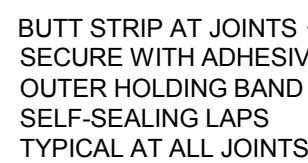


NOTE:
HANGER, ROD AND INSERT SHALL BE DIPPED IN
RED OXIDE PRIMER PRIOR TO INSTALLATION.

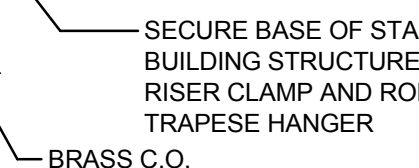
(2)



(9)



6



3

NT

VA FORM 08-6231

SKA HENNESSY
GROUP
a wholly owned subsidiary of SH Group

Syska Hennessy Group, Inc.
425 California Street
Suite 700
San Francisco, CA 94104
Tel: 415.288.9060
Fax: 415.835.0385
www.syska.com

ESTABLISHED 1988 **HILLIARD**
 **ARCHITECTS**
 GOING GREEN

HILLIARD ARCHITECTS, INC
251 Post Street, Suite 620
San Francisco, CA 94108-5017
Tel 415 989 6400, Fax 415 989 3056
www.HilliardArchitects.com

Approved: Project Director

Date
05/12/201

Drawn	
Author	

Author

Page 1 of 1

 Department of
Veterans Affairs

one quarter inch = one foot	$\frac{1}{4}$	1
one eighth inch = one foot	$\frac{1}{8}$	8
three eighths inch = one foot	$\frac{3}{8}$	8
one half inch = one foot	$\frac{1}{2}$	2
three quarters inch = one foot	$\frac{3}{4}$	4
one inch = one foot	1	1
one and one half inches = one foot	1 $\frac{1}{2}$	2
three inches = one foot	3	3

VA FORM 08-6231

 Department of
Veterans Affairs