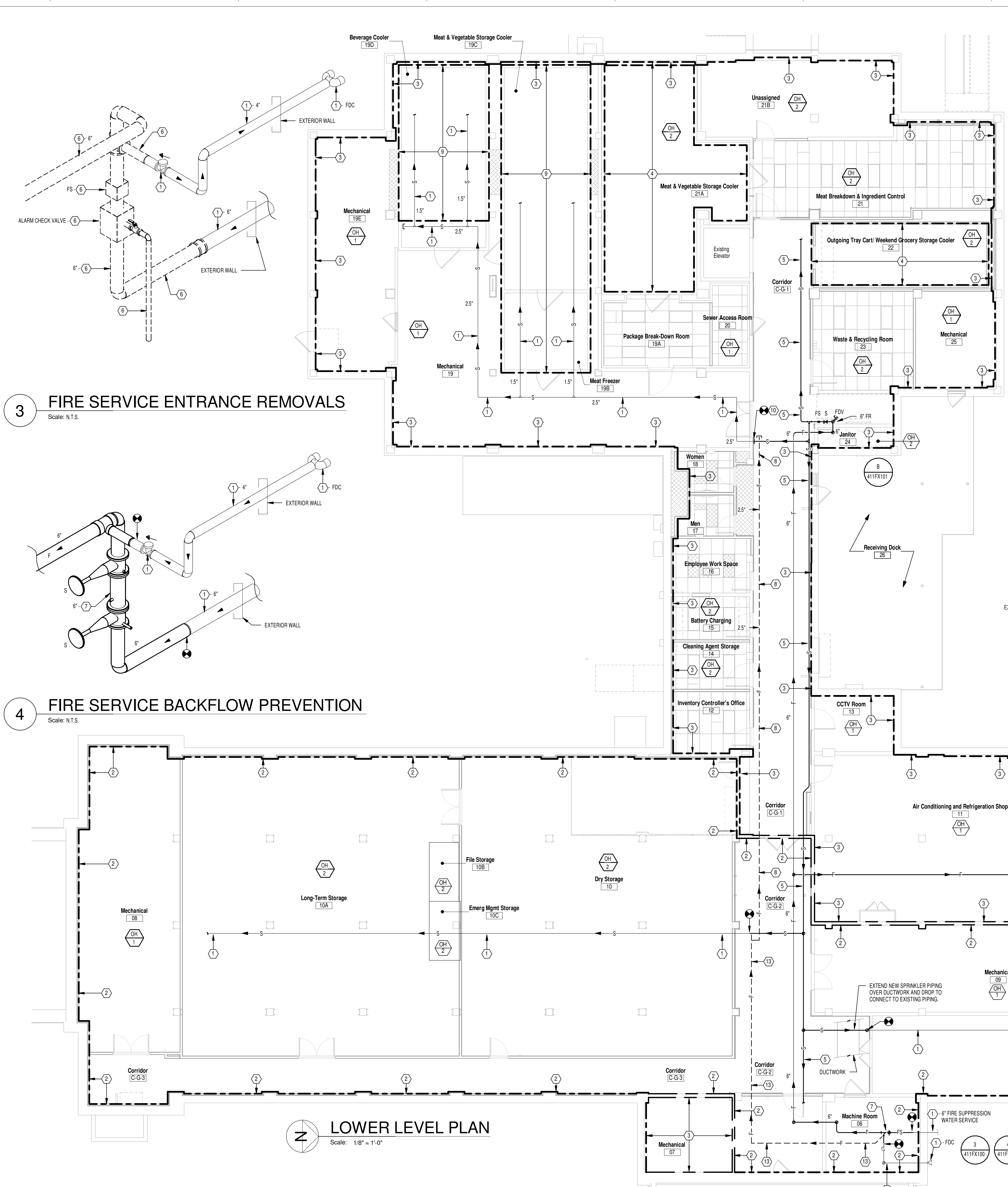


three inches = one foot  
one and one-half inches = one foot  
one inch = one foot  
three-quarters inch = one foot  
three-eighths inch = one foot  
one-half inch = one foot  
one-quarter inch = one foot  
one-eighth inch = one foot



### PLAN NOTES

- EXISTING TO REMAIN.
- MODIFY EXISTING WET-PIPE FIRE SUPPRESSION SPRINKLER SYSTEM TO CONFORM TO NEW LAYOUT INSIDE INDICATED AREA.
- PROVIDE NEW WET-PIPE FIRE SUPPRESSION SPRINKLER SYSTEM (PER HYDRAULIC CALCULATIONS) TO CONFORM TO NEW LAYOUT INSIDE INDICATED AREA.
- PROVIDE DRY PENDENT SPRINKLERS IN NEW COOLERS.
- EXTEND NEW WET-PIPE FIRE SUPPRESSION SPRINKLER MAIN (SIZED PER HYDRAULIC CALCULATIONS) TO SERVE SPRINKLER SYSTEM.
- REMOVE EXISTING ITEM OF EQUIPMENT (TYPE AS INDICATED) AND ALL EXTRANEOUS PIPING BACK TO MAIN OR POINT OF NEW CONNECTION.
- NEW DOUBLE CHECK DETECTOR ASSEMBLY. UNIT SHALL BE APPROVED FOR VERTICAL INSTALLATION.
- REMOVE EXISTING 2.5" FIRE SUPPRESSION SPRINKLER PIPING SERVING EXISTING LOWER LEVEL FREEZER COOLER.
- EXISTING DRY PENDENT TYPE SPRINKLER SYSTEM SERVING EXISTING FREEZER COOLER TO REMAIN.
- CONNECT EXISTING 2.5" FIRE SUPPRESSION SPRINKLER PIPING TO NEW LOWER LEVEL ZONE FIRE SUPPRESSION SPRINKLER PIPING AND ACCOMMODATE IN NEW HYDRAULIC CALCULATIONS.
- DRY-PIPE VALVE ASSEMBLY (SIZED PER HYDRAULIC CALCULATIONS), REFER TO DETAIL, C411FX101 FOR ADDITIONAL INFORMATION. COORDINATE INSTALLATION WITH DIVISION 26.
- EXTEND DRY-PIPE SPRINKLER SYSTEM RISER UP THRU FIRST FLOOR AND INTO ATTIC TO SERVE ATTIC DRY-PIPE SPRINKLER SYSTEM (SIZED PER HYDRAULIC CALCULATIONS).
- REMOVE EXISTING 4" FIRE SUPPRESSION SPRINKLER PIPING SERVING EXISTING LOWER LEVEL AREA.

### FIRE SUPPRESSION DESIGN NOTES

- PROVIDE A COMPLETE FIRE SUPPRESSION SPRINKLER AND STANDPIPE SYSTEM IN THE ENTIRE RENOVATED AREA.
- COORDINATE WORK WITH VAMC AND ALL OTHER TRADES. EACH CONTRACTOR SHALL BE RESPONSIBLE FOR OFFSETTING AND/OR RELOCATING SERVICES DETERMINED TO BE IN CONFLICT WITH WORK OF OTHER TRADES.
- DESIGN SERVICES SHALL FOLLOW ALL VA STANDARD DESIGN PRACTICES, DETAILS, SPECIFICATIONS AND SITE SPECIFIC CODE REQUIREMENTS AS WELL AS WORK SHOWN ON THESE DOCUMENTS. ALL DEVIATIONS FROM AFOREMENTIONED REQUIREMENTS SHALL BE APPROVED BY THE COR.
- VERIFY THAT THERE IS ADEQUATE SPACE TO INSTALL ALL NEW PIPING REQUIRED TO COMPLETE THIS WORK.
- ALL SPRINKLER PIPING IS LOCATED ABOVE THE CEILING (AT THE BOTTOM OF STRUCTURE IN EXPOSED STRUCTURAL AREAS) UNLESS OTHERWISE INDICATED.
- THE BASIS OF DESIGN OF SPACING AND SIZING FOR THE COMPLETE FIRE SUPPRESSION SPRINKLER SYSTEM IS FOR A WET PIPE SYSTEM HYDRAULICALLY CALCULATED AS FOLLOWS:
  - LIGHT HAZARD AREA LIMITED TO A MAXIMUM OF 225 SQ. FT. PER SPRINKLER WITH THE DENSITY OF 0.10 GPM/SQ. FT. OVER THE MOST REMOTE 1500 SQ. FT. PROVIDE AN ADDITIONAL 100 GPM HOSE ALLOWANCE. ALL AREAS SHALL BE CONSIDERED LIGHT HAZARD UNLESS OTHERWISE INDICATED, OR REQUIRED BY VAMC GUIDELINES.
  - ALL MECHANICAL, ELECTRICAL, AND SIMILAR AREAS, ETC. SHALL BE ORDINARY HAZARD (GROUP 1) LIMITED TO A MAXIMUM OF 130 SQ. FT. PER SPRINKLER WITH A DENSITY OF 0.15 GPM/SQ. FT. OVER THE MOST REMOTE 1500 SQ. FT. PROVIDE AN ADDITIONAL 250 GPM HOSE ALLOWANCE.
  - ALL STORAGE, TRASH, FILE STORAGE AND SIMILAR AREAS, ETC. SHALL BE ORDINARY HAZARD (GROUP 2) LIMITED TO A MAXIMUM OF 130 SQ. FT. PER SPRINKLER WITH A DENSITY OF 0.20 GPM/SQ. FT. OVER THE MOST REMOTE 1500 SQ. FT. PROVIDE AN ADDITIONAL 250 GPM HOSE ALLOWANCE.
- THE DIVISION 21 CONTRACTOR IS RESPONSIBLE FOR SPRINKLER LAYOUT, PIPE ROUTING, AND SIZING.
- THE ENTIRE SPRINKLER SYSTEM SHALL CONFORM TO VAMC, LOCAL, STATE AND NFPA STANDARDS, RULES AND REGULATIONS.
- CAREFULLY COORDINATE THE LOCATION OF ALL SPRINKLERS AND PIPING WITH ALL OTHER TRADES AND THE ARCHITECT.
- VERIFY THE LOCATION OF ALL LIGHTING FIXTURES AND AIR DEVICES BEFORE INSTALLATION OF SPRINKLERS.
- PROVIDE ALL SPRINKLER PIPING LAYOUT AND SIZING.
- ALL SPRINKLER LOCATIONS MUST BE COORDINATED WITH ALL EQUIPMENT KINDRED TO OTHER TRADES. SPRINKLER LOCATIONS MUST BE APPROVED BY THE ARCHITECT BEFORE WORK COMMENCES. REFER TO THE ARCHITECTURAL AND REFLECTIVE CEILING PLANS FOR ADDITIONAL INFORMATION ON ALL CEILING TYPES, HEIGHTS, AND OTHER ARCHITECTURAL FEATURES.
- MAKE NECESSARY FLOW TEST, LAY OUT SYSTEMS, OBTAIN APPROVALS FROM THE AUTHORITIES HAVING JURISDICTION PRIOR TO BEGINNING ANY FABRICATION OR INSTALLATION WORK.
- SPRINKLER PIPING SHALL BE MINIMUM 1" SIZE. PROVIDE ALL HARD PIPING, NO FLEXIBLE PIPING ALLOWED.
- SPRINKLERS (UNLESS OTHERWISE NOTED):  
EXPOSED AREAS - UPRIGHT OR PENDENT TYPE - STANDARD BRASS  
CEILING AREAS - CHROME RECESSED PENDENT TYPE ALL LAY-IN AND HARD DRYWALL  
CEILING AREAS - ALL SPRINKLERS SHALL BE UL LISTED AND FM APPROVED.
- SPRINKLER SHALL BE "QUICK RESPONSE" TYPE IN ALL AREAS EXCEPT HIGH TEMPERATURE AREAS.
- ALL PENDENT TYPE SPRINKLERS LOCATED IN SUSPENDED CEILING TILE AREAS SHALL BE LOCATED IN THE CENTER OF THE CEILING TILE.
- ANNULAR SPACE AT PIPE AND OTHER SIMILAR PENETRATION OF FIRE RATED ASSEMBLIES SHALL BE FIRESTOPPED. REFER TO SPECIFICATION SECTION 07 84 00 FIRESTOPPING. REFER TO ARCHITECTURAL DRAWINGS FOR CONSTRUCTION, LAYOUT AND FIRE RATINGS OF FLOORS, WALLS, PARTITIONS AND OTHER BUILDING ELEMENTS.
- REFER TO SPECIFICATION SECTION 21 13 13 FOR FLOW TEST REQUIREMENTS.
- REFER TO ARCHITECTURAL DRAWING G100 FOR SMOKE COMPARTMENTS. ALL SPRINKLER ZONES SHALL MATCH SMOKE COMPARTMENTS.
- ALL EXPOSED DUCTWORK 48" WIDE AND LARGER SHALL BE PROVIDED WITH SPRINKLER PROTECTION BELOW THE DUCTWORK.
- ALL NEW SPRINKLERS AND RELATED PIPING SHALL BE INSTALLED AND READY FOR OPERATION BEFORE THE EXISTING SYSTEM IS REMOVED. THE SPRINKLER SYSTEM SHALL NOT BE OUT OF OPERATION LONGER THAN A WORK SHIFT.
- DIVISION 21 CONTRACTOR SHALL PROVIDE NEW HYDRAULIC CALCULATIONS FOR THE MOST REMOTE RENOVATED AREA TO CONFIRM SPRINKLER SYSTEM COMPLIANCE.
- EXISTING AUTOMATIC SPRINKLER SYSTEM SHALL BE MAINTAINED IN FULLY OPERATIONAL CONDITION AT ALL TIMES, INCLUDING EXISTING AREAS BEING RENOVATED. SPRINKLER SYSTEM MAY BE TAKEN OFF-LINE FOR UP TO 4 HOURS AS REQUIRED TO MAKE MODIFICATIONS/CONNECTIONS. SHUT-DOWNS OF THE AUTOMATIC SPRINKLER SYSTEM EXCEEDING 4 HOURS SHALL REQUIRE A FIRE WATCH IN ACCORDANCE WITH GENERAL REQUIREMENTS SPECIFICATION SECTION 01 00 00. REQUIRED SHUT-DOWNS OF THE SMOKE DETECTION SYSTEM AND FIRE SUPPRESSION SPRINKLER SYSTEM SHALL NOT OCCUR CONCURRENTLY. COORDINATION BETWEEN THE COR AND ALL TRADES SHALL BE REQUIRED BEFORE SHUT-DOWN OF THE SMOKE DETECTION SYSTEM OR FIRE SUPPRESSION SPRINKLER SYSTEM.



1 EXISTING FIRE SERVICE ENTRANCE  
Scale: NOT TO SCALE



2 EXISTING FIRE SERVICE  
Scale: NOT TO SCALE

### LEGEND

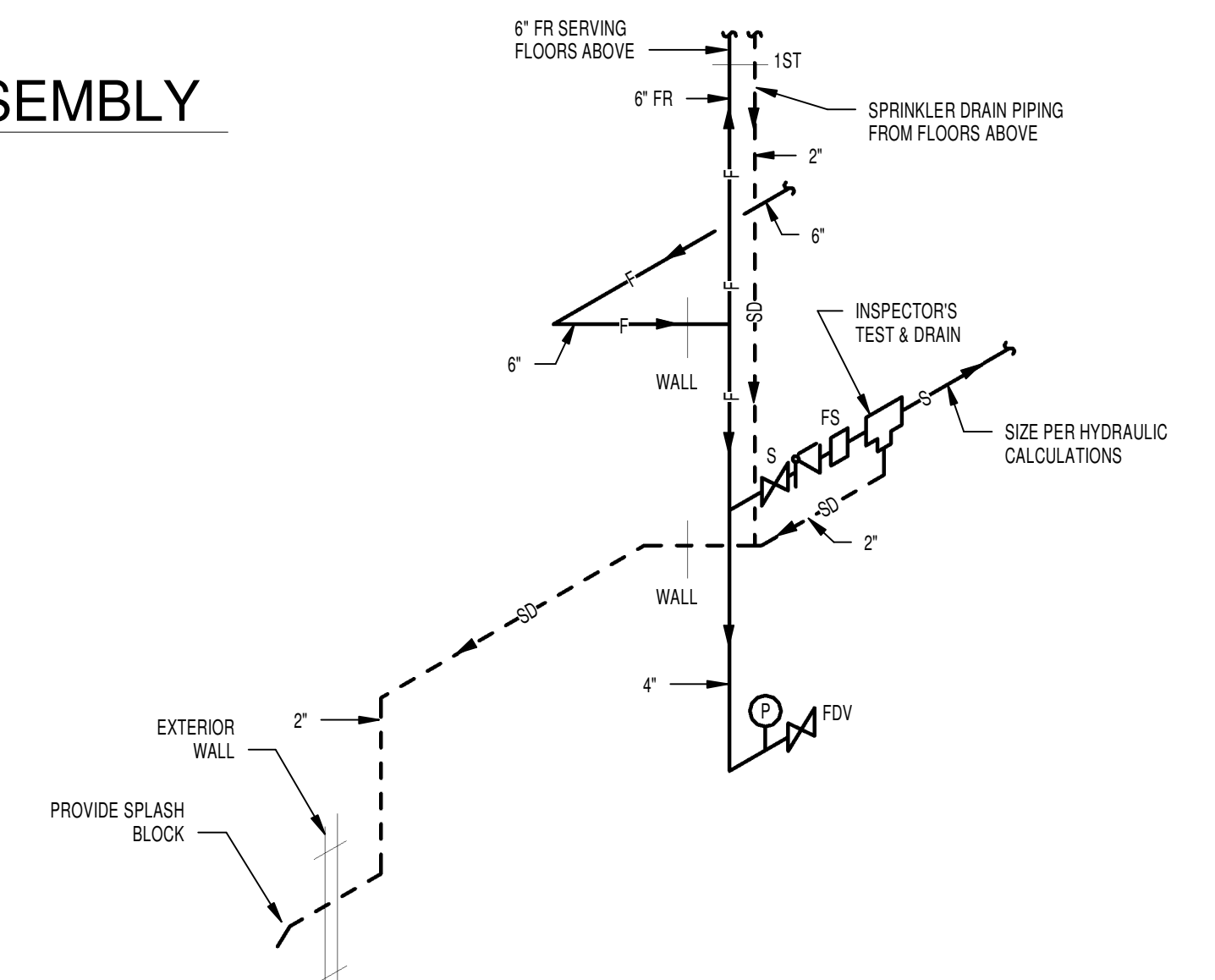
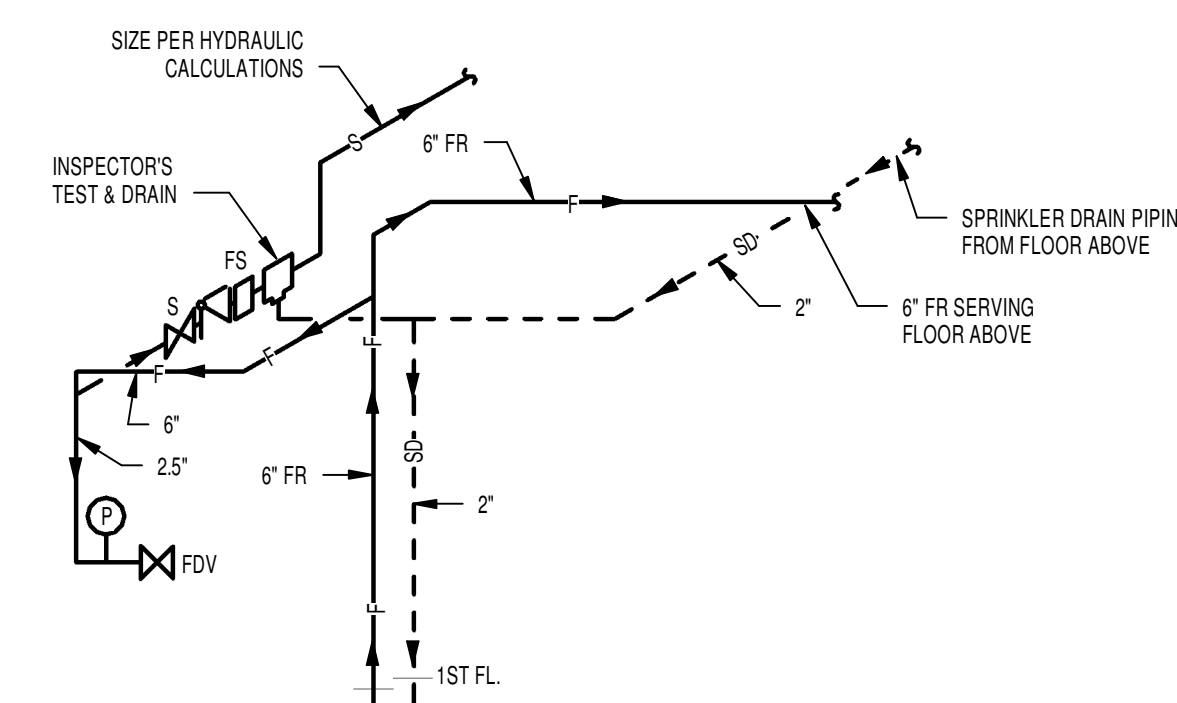
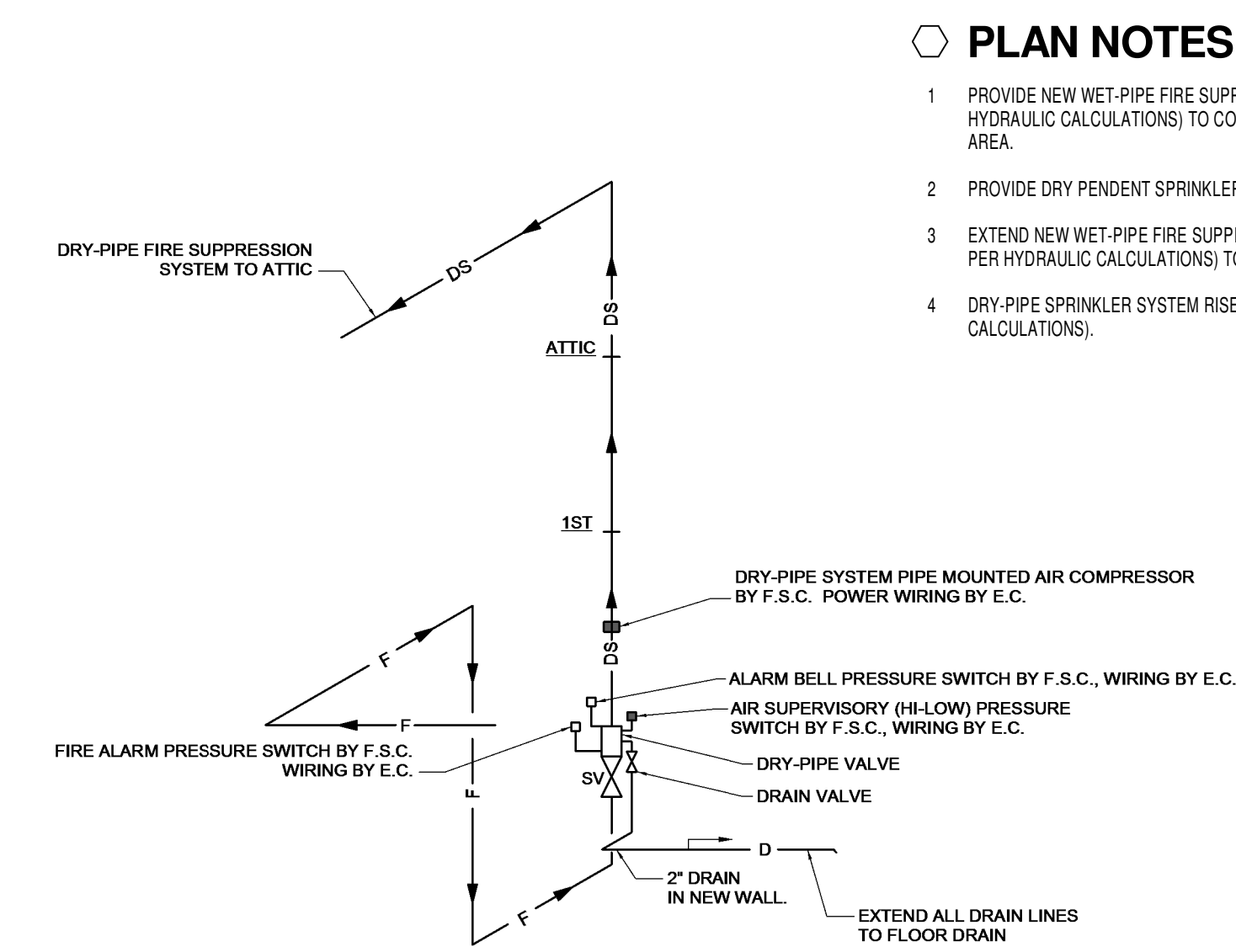
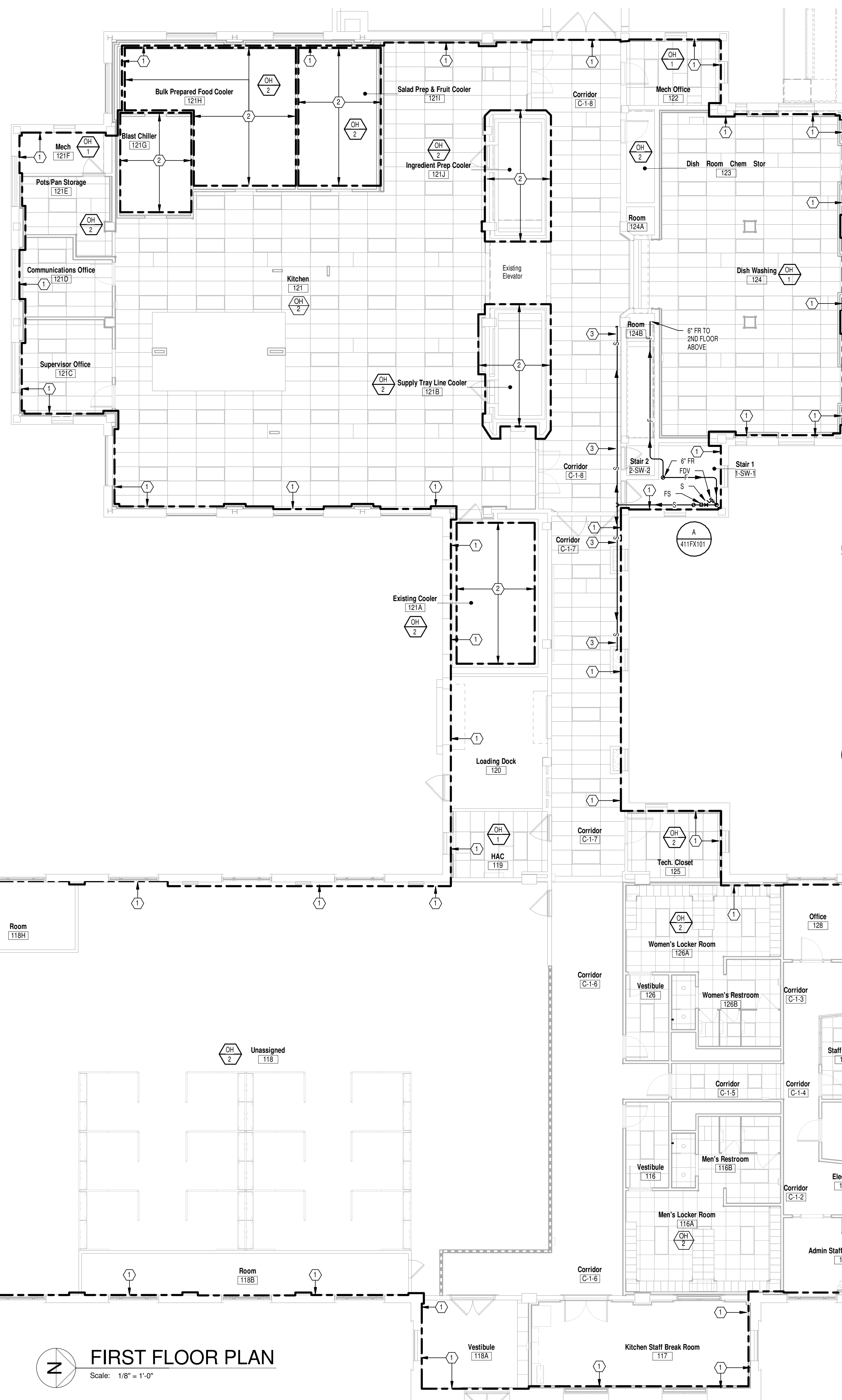
F.S.C.	FIRE SUPPRESSION CONTRACTOR (DIV 21)
FR	FIRE RISER
→	DIRECTION OF FLOW
F	FIRE SUPPRESSION PIPE (WET)
FS	FIRE SERVICE PIPE
S	SPRINKLER PIPE (WET)
DS	DRY-PIPE SPRINKLER PIPING
SV	SUPERVISED VALVE
FS	FLOW SWITCH
FDV	FIRE DEPARTMENT VALVE
FDC	FIRE DEPARTMENT CONNECTION
OH 1	FIRE SUPPRESSION HAZARD CLASSIFICATION ORDINARY HAZARD / GROUP 1
3	"NOTE" SYMBOL (FOR NOTES ON SAME SHEET)
123	ROOM NUMBER
COR	CONTRACTING OFFICER'S REPRESENTATIVE

DRAWING INDEX - FIRE SUPPRESSION	
Sheet Number	Sheet Name
411FX100	LOWER LEVEL PLAN
411FX101	FIRST FLOOR PLAN
411FX102	SECOND FLOOR PLAN

FULLY SUPPRESSED

CONSULTANTS:		HEAPY PROJECT No.: 2013-04002		ARCHITECT/ENGINEERS:		Drawing Title		Project Title		Project No.	
JOHN DOE ARCHITECTS		GARY S. EDDICE E-52755 FIRM LICENSE No.: 01528		Heapy Engineering Mechanical Electrical Commissioning Technology Nationally Recognized Leader in Sustainability / LEED		LOWER LEVEL PLAN		Correct Deficiencies Patient Kitchen		VA Project No. 552-14-102 JPA Project No. 13001.00	
Revisions		Date		1400 W Dorothy Lane, Dayton OH 45409-1310 Ph: 937-224-0861 Fax: 937-224-5777 www.heapy.com		Approved: Project Director		Location Dayton, OH		Building Number B411	
								Date 05/30/2014		Drawing Number 411FX100	
								Checked RLT		Drawn DPB/RLC	
										Dwg. of	

Office of  
Construction  
and Facilities  
Management  
Department of  
Veterans Affairs



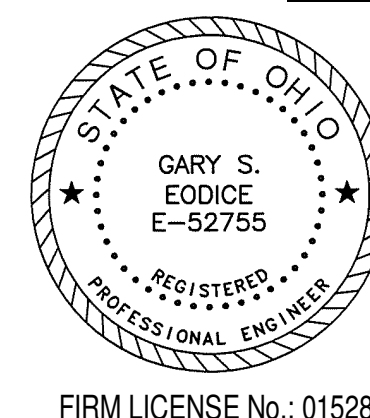
## PLAN NOTES

1. PROVIDE NEW WET-PIPE FIRE SUPPRESSION SPRINKLER SYSTEM (PER HYDRAULIC CALCULATIONS) TO CONFORM TO NEW LAYOUT INSIDE INDICATED AREA.
2. PROVIDE DRY PENDENT SPRINKLERS IN NEW AND/OR EXISTING COOLERS.
3. EXTEND NEW WET-PIPE FIRE SUPPRESSION SPRINKLER MAIN (SIZED PER HYDRAULIC CALCULATIONS) TO SERVE SPRINKLER SYSTEM.
4. DRY-PIPE SPRINKLER SYSTEM RISER SERVING ATTIC (SIZED PER HYDRAULIC CALCULATIONS).

[illegible]

CONSULTANTS:

JOHN POE ARCHITECTS



ARCHITECT/ENGINEERS:



1400 W Dorothy Lane, Dayton OH 45409-1310  
Ph: 937-224-0861 Fax: 937-224-5777 [www.heapy.com](http://www.heapy.com)

Drawing Title

FIRST FLOOR PLAN

Approved: Project Director

Project Title

Correct Deficiencies Patient  
Kitchen

Location	Dayton, OH
----------	------------

Date  
05/30/2014

Checked	RLT
---------	-----

Drawn  
DPB/RLC

Project No.	
VA Project No.	552-14-102
JPA Project No.	13001.00
Building Number	

B411

Drawing Number

411  
Down of

Office of  
Construction  
and Facilities  
Management



