

DRAIN SCHEDULE

SYMBOL	DESCRIPTION	BODY				STRAINER/GRATE					TOP FINISH				
		C.I.	S.S.	C.R.	BRASS	ROUND	SQUARE	ADJUST.	FLAT	FUNNEL	SEC. DOME	NICKEL BRONZE	C.I.	C.R.	S.S.
FD1	3" MEDIUM DUTY/DOUBLE DRAINAGE/VANDAL RESISTANT (TYPE C)	●	-	-	-	●	-	-	●	-	-	●	-	-	-
FD2	4" MEDIUM DUTY/DOUBLE DRAINAGE/VANDAL RESISTANT/STAINLESS STEEL/12" SQUARE (TYPE S)/1/2 GRATE	-	●	-	-	-	●	-	-	-	●	-	-	-	●
FD3	4" MEDIUM DUTY/DOUBLE DRAINAGE/VANDAL RESISTANT/STAINLESS STEEL/12" SQUARE (TYPE S)	-	●	-	-	-	●	-	●	-	●	-	-	-	●
FD4	3" LIGHT DUTY/DOUBLE DRAINAGE/VANDAL RESISTANT/STAINLESS STEEL/FUNNEL (TYPE M)	-	●	-	-	●	-	●	-	●	-	-	-	-	●

GENERAL NOTES

- A THESE NOTES APPLY EQUALLY TO THE FULL SET OF DOCUMENTS.
- B SITE VISIT(S) SHALL BE AS OUTLINED IN PROJECT SPECIFICATIONS.
- C ALL PIPING IS ABOVE THE CEILING (AT THE UNDERSIDE OF STRUCTURE IN EXPOSED STRUCTURE AREAS), UNLESS OTHERWISE NOTED.
- D REFER TO SCHEDULES, DETAILS AND DIAGRAMS FOR PIPING, PIPE SIZES AND PIPELINE DEVICES NOT INDICATED ON THE FLOOR PLAN.
- E ABOVE CEILING UTILITY SPACE IS LIMITED. COORDINATION WITH ALL TRADES IS CRITICAL PRIOR TO INSTALLATION OF ANY WORK.
- F EXISTING CONDITIONS SHOWN HAVE BEEN BASED UPON AVAILABLE DRAWING INFORMATION, AND MAY BE AT VARIANCE WITH ACTUAL WORK IN PLACE. THE CONTRACTOR SHALL TAKE ALL NECESSARY FIELD MEASUREMENTS AND FIELD VERIFY ALL CONDITIONS AFFECTING THE EXECUTION OF THE WORK. ANY DISCREPANCIES BETWEEN EXISTING CONDITIONS AND THE WORK SHOWN ON THE CONTRACT DOCUMENTS WHICH MAY IMPACT THE PROGRESS OF THE WORK SHALL BE BROUGHT TO THE ATTENTION OF THE COR IN WRITING FOR RESOLUTION BEFORE PROCEEDING WITH THE WORK.
- G ALL PIPING INDICATED TO BE REMOVED SHALL BE REMOVED BACK TO ACTIVE MAINS AND CAPPED, OR REMOVED BACK TO POINTS OF CONNECTION OF NEW WORK INACCESSIBLE PIPING, WHERE SO NOTED, TO BE ABANDONED SHALL BE DISCONNECTED FROM ACTIVE MAINS AND CAPPED OR PLUGGED IN CONCEALED LOCATIONS.
- H NEW CONNECTIONS TO EXISTING PIPING SHALL BE WITH THE SAME SIZE AS THE EXISTING PIPING UNLESS OTHERWISE NOTED.
- I ALL REMOVED MATERIAL AND EQUIPMENT SO DESIGNATED BY THE COR, SHALL BE TURNED OVER AND PLACED WHERE DIRECTED. ALL MATERIAL AND EQUIPMENT, WHICH THE COR DOES NOT WISH TO RETAIN, SHALL BECOME THE PROPERTY OF THE CONTRACTOR RESPONSIBLE FOR THE REMOVAL.
- J REFER TO THE ARCHITECTURAL PLANS FOR PROJECT PHASING REQUIREMENTS.
- K ANNUAL SPACE OF ALL PIPE, CONDUIT, DUCT & OTHER SIMILAR PENETRATIONS OF FIRE RATED ASSEMBLIES SHALL BE FIRE STOPPED. IN ADDITION, PENETRATIONS THROUGH 1-HOUR RATED WALLS & FLOORS SHALL BE FIRE STOPPED TO RETARD PASSAGE OF FIRE AND SMOKE.
- L THE CONTRACT DRAWINGS ARE NOT INTENDED TO SHOW EVERY VERTICAL OR HORIZONTAL OFFSET WHICH MAY BE NECESSARY TO COMPLETE THE SYSTEMS. COORDINATE WORK IN ADVANCE WITH ALL OTHER TRADES AND REPORT IMMEDIATELY ANY DIFFICULTIES WHICH CAN BE ANTICIPATED.
- M FIELD VERIFY EXISTING CONDITIONS, INCLUDING PIPE SIZES, SERVICES AND LOCATIONS PRIOR TO PERFORMING WORK.
- N ALL CUTTING AND PATCHING REQUIRED FOR THIS PROJECT SHALL BE INCLUDED IN THE CONTRACT. REFINISH ANY SURFACE DISTURBED UNDER THIS WORK TO MATCH EXISTING.
- O WHERE ROOFING WORK IS REQUIRED, THE EXISTING ROOFING MEMBRANE AND INSULATION SHALL BE CUT, REMOVED AND RESTORED AS REQUIRED TO ATTAIN A WATERTIGHT CONDITION. THE ROOFING SUB-CONTRACTOR SHALL BE A CERTIFIED INSTALLER FOR SUCH INSTALLATION TO MAINTAIN THE EXISTING WARRANTY ON THE ROOF.

LEGEND

G.C.	GENERAL CONTRACTOR	SS	"CONNECT TO EXISTING" SYMBOL
P.C.	PLUMBING CONTRACTOR (DIV 22)	SR	SANITARY STACK (SOIL/WASTE)
F.P.C.	FIRE PROTECTION CONTRACTOR (DIV 21)	VR	SUPPLY RISER
H.C.	HVAC CONTRACTOR (DIV 23)	VR	VENT RISER
E.C.	ELECTRICAL CONTRACTOR (DIV 26)	CO	CLEANOUT
---	SOIL AND OR WASTE PIPE (SP OR WP)	DS	DOWNSPOUT
---	KITCHEN WASTE PIPE	FD1	FLOOR DRAIN
---	PUMPED DISCHARGE PIPE	EM	EMERGENCY FIXTURE (EXISTING)
---	PROPANE GAS PIPE	DF	DRINKING FOUNTAIN (EXISTING)
---	VENT PIPE	SK	SINK (EXISTING)
---	DOMESTIC COLD WATER PIPE (DCW)	UR	URINAL (EXISTING)
---	DOMESTIC HOT WATER PIPE (DHW)	WC	WATER CLOSET (EXISTING)
---	DOMESTIC HOT WATER RETURN PIPE (DHW-R)	LV	LAVATORY (EXISTING)
---	SOFTENED DOMESTIC COLD WATER PIPE	HR	HOSE REEL (EXISTING)
---	SHUT-OFF VALVE (BALL)	COR	CONTRACTING OFFICER'S REPRESENTATIVE
---	COMBINATION BALANCING & SHUT OFF VALVE	123	ROOM NUMBER
---	CHECK VALVE	P418	PLUMBING FIXTURE DESIGNATION
---	EXISTING PIPE TO REMAIN	K8	KITCHEN EQUIPMENT
---	EXISTING PIPE TO BE REMOVED	F.F.E.	FINISHED FLOOR ELEVATION
---	DROP OR RISE		
---	CONNECTION OUT OF TOP		
---	CONNECTION OUT OF BOTTOM		
---	DIRECTION OF FLOW		
---	UP TO FIXTURE ABOVE		

DETAIL B SHOWN ON SHEET 411P001

*NOTE: SYMBOL (FOR NOTES ON SAME SHEET)

FIXTURE SCHEDULE

SYMBOL	MOUNTING HEIGHT	DESCRIPTION	FLOW		FIXTURE UNITS		SUPPLY			DRAINAGE CONNECTION				REMARKS
			GPM	GPF	DRAINS	WATER C/H	COLD	HOT	TEPID	OUTLET	VENT		DIRECT	
P103	18" TO RIM	WATER CLOSET/WALL HUNG/ELONGATED BOWL/ADA		1.28	4	5/4	1"	--	--	4"	2"	●	--	BATTERY POWERED/SENSOR OPERATED
P201	17" TO RIM	URINAL/WALL HUNG/ADA		0.5	4	5/4	0.75"	--	--	2"	1.5"	●	--	BATTERY POWERED/SENSOR OPERATED
P418	34" TO RIM	LAVATORY/WALL HUNG/20"x18"/ADA/NON-AERATED FLOW	0.5		1	0.6/0.6	0.5"	0.5"	--	1.5"	1.5"	●	--	SENSOR OPERATED/GOOSENECK SPOUT/LAV SHIELD
P419	--	LAVATORY/C/TOP/19" DIAMETER/ADA/NON-AERATED FLOW	0.5		1	0.6/0.6	0.5"	0.5"	--	1.5"	1.5"	●	--	SENSOR OPERATED/GOOSENECK SPOUT/ADA COVERS
P505	FLOOR SET	MOP SINK/24"x24"x12/6" DROP FRONT/TERRAZZO			3	2.25/2.25	0.5"	0.5"	--	3"	1.5"	●	--	PAIL HOOK FAUCET/VACUUM BREAKER/CROSS HANDLES
P524	--	SINK/STAINLESS STEEL/C/TOP/TWO COMPT/25"x19.5"	1.5		1	0.5/0.5	0.5"	0.5"	--	(2) 1.5"	1.5"	●	--	SINGLE HANDLE/GOOSENECK SPOUT
P609	36" TO SPOUT	WATER COOLER/DRINKING FOUNTAIN/ADA			0.5	0.5/4	0.5"	--	--	1.5"	1.5"	●	--	SINGLE HEIGHT/WALL MOUNTED
P701	44" VALVE	SHOWER VALVE & HEAD ASSEMBLY/SHOWER BY G.C./ADA	1.5 2		2	0.5/0.5	0.5"	0.5"	--	2"	1.5"	●	--	THERMOSTATIC/PRESS. BALANCING/HAND HELD HOSE
P706	SEE SPECS	EMERGENCY EYE/FACEWASH/WALL HUNG			1	3/3	--	--	0.5"	1.5"	1.5"	●	--	EMERGENCY EQUIPMENT/TEPID WATER TO FIXTURE
P707	SEE SPECS	EMERGENCY SHOWER/EYE/FACEWASH/FREE STANDING			1	6/6	--	--	1.25"	1.5"	1.5"	●	--	EMERGENCY EQUIPMENT/TEPID WATER TO FIXTURE

1. DO NOT USE AERATORS ON LAVATORY AND SINK FAUCETS. USE NON-AERATED FLOW DEVICES ONLY.
2. SUPPLY PIPE SIZES IN THIS SCHEDULE ARE FIXTURE CONNECTION SIZES. DCW SUPPLY PIPE SIZES SERVING FLUSH VALVES SHALL BE A MINIMUM ONE PIPE SIZE LARGER THAN THE INDICATED CONNECTION SIZE, OR AS SIZED AS SHOWN ON THE FLOOR PLANS.
- PIPING AT THE FLUSH VALVE CONNECTION, OF A SIZE EQUAL TO THE CONNECTION SIZE, SHALL BE LIMITED TO A MAXIMUM 2 FEET IN DEVELOPED LENGTH AND INCLUDE A MAXIMUM ONE 90 DEGREE ELBOW FITTING. FULL SIZE MANIFOLDS, WHERE INDICATED ON THE FLOOR PLANS, SHALL BE PROVIDED FULL SIZE THE LENGTH OF THE PIPING CHASE AND TERMINATED WITH A FULL SIZE CAP.

KITCHEN EQUIPMENT

MARK	DESCRIPTION	SUPPLY & WASTE TRIM			SUPPLY		WASTE & VENT					WASTE SYSTEM		REFER TO EQUIPMENT SCHEDULE NOTES
		BALL VALVE	W/SHUT OFF	HOSES BY K.E.C.	D.C.W.	D.H.W. (1/4" F)	COMPRESSION AIR	VENT MINIMUM	INDIRECT	INDIRECT	TO FLOOR DRAIN	SANITARY	KITCHEN WASTE	
K5	BLAST CHILLER / SHOCK FREEZER	-	-	-	-	-	-	1.25"	-	1.25"	1.25"	-	●	-
K21	UTILITY DISTRIBUTION SYSTEM	●	-	-	-	-	-	-	-	-	-	-	-	-
K23	COMBI OVEN / STEAMER (STACKED - 2 REQ'D)	-	-	●	-	-	-	1.5"	-	1.5"	1.5"	-	●	-
K24	COMBI OVEN / STEAMER (STACKED - 2 REQ'D)	-	-	●	-	-	-	1.5"	-	1.5"	1.5"	-	●	-
K25	MINI-ROTATING RACK BAKERY OVEN	-	-	●	-	-	-	0.5"	-	0.5"	0.5"	-	●	-
K27	40 GALLON TILT SKILLET (MODULAR ELECTRICAL TILTING BRAISING PAN)	-	-	●	-	-	-	0.5"	-	0.5"	0.5"	-	●	-
K28	40 GALLON TILT KETTLE (MODULAR ELECTRICAL TILTING BRAISING PAN)	-	-	●	-	-	-	0.5"	-	0.5"	0.5"	-	●	-
K29	20 GALLON TILT KETTLE/STAND	-	-	●	-	-	-	0.5"	-	0.5"	0.5"	-	●	-
K30	20 GALLON TILT KETTLE/STAND	-	-	●	-	-	-	0.5"	-	0.5"	0.5"	-	●	-
K36	INGREDIENT CONTROL PREP COUNTER/SINK	-	●	-	-	-	-	0.75"	-	0.75"	0.75"	-	●	-
K37	VEGETABLE PREP WORKTABLE/SINK	●	-	-	-	-	-	0.75"	-	0.75"	0.75"	-	●	-
K40	VEGETABLE PREP WORKTABLE/SINK	●	-	-	-	-	-	0.5"	-	0.5"	0.5"	-	●	-
K41	COLD / DESSERT PREP WORKTABLE/SINK	●	-	-	-	-	-	0.75"	-	0.75"	0.75"	-	●	-
K60	MOBILE BAGGING / VACUUM SEALER	-	-	●	-	-	-	0.5"	-	0.5"	0.5"	-	●	-
K61	MEAT PACKING / VACUUM SEALER	●	-	-	-	-	-	0.5"	-	0.5"	0.5"	-	●	-
K66	HOT WATER DISPENSER	●	-	-	-	-	-	0.5"	-	0.5"	0.5"	-	●	-
K67	ICE MAKER W/DISPENSER	-	●	-	-	-	-	0.5"	-	0.5"	0.5"	-	●	-
K68	TRAY MAKE-UP SERVICE EQUIPMENT	-	-	-	-	-	-	0.5"	-	0.5"	0.5"	-	●	-
K71	HERO'S CAFE PREP COUNTER/SINK	-	●	-	-	-	-	0.5"	-	0.5"	0.5"	-	●	-
K76	COOK & HOLD OVEN	-	●	-	-	-	-	0.5"	-	0.5"	0.5"	-	●	-
K77	COUNTERTOP COMBI OVEN / STEAMER	-	●	-	-	-	-	0.75"	-	0.75"	0.75"	-	●	-
K91	FIVE-WELL HOT FOOD COUNTER	-	-	-	-	-	-	0.75"	-	0.75"	0.75"	-	●	-
K92	REFRIGERATED TRAY MAKE-UP TABLE	-	-	-	-	-	-	0.75"	-	0.75"	0.75"	-	●	-
K96	GARBAGE DISPOSAL SYSTEM	●	-	-	-	-	-	0.5"	-	0.5"	0.5"	-	●	-
K97	GARBAGE DISPOSAL SYSTEM	●	-	-	-	-	-	0.5"	-	0.5"	0.5"	-	●	-
K98	GARBAGE DISPOSAL SYSTEM	●	-	-	-	-	-	0.5"	-	0.5"	0.5"	-	●	-
K99	REMOTE WASTE PULPER	●	-	-	-	-	-	0.75"	-	0.75"	0.75"	-	●	-
K100	REMOTE WASTE HYDRA - EXTRACTOR	●	-	-	-	-	-	0.75"	-	0.75"	0.75"	-	●	-
K101	COMPOSTABLE WASTE DEHYDRATOR	●	-	-	-	-	-	0.75"	-	0.75"	0.75"	-	●	-
K106	SOILED TRAY CONVEYOR	●	-	-	-	-	-	0.75"	-	0.75"	0.75"	-	●	-
K107	POWERWASH SOAK SINK	●	-	-	-	-	-	0.5"	-	0.5"	0.5"	-	●	-
K108	SILVERWARE SOAK SINK	-	-	-	-	-	-	0.75"	-	0.75"	0.75"	-	●	-
K110	THREE COMPARTMENT SINK	●	-	-	-	-	-	0.75"	-	0.75"	0.75"	-	●	-
K117	FLIGHT-TYPE DISH MACHINE	●	-	-	-	-	-	0.75"	-	0.75"	0.75"	-	●	-
K119	WALL MOUNTED POWER WASH	●	-	-	-	-	-	0.75"	-	0.75"	0.75"	-	●	-
K120	WALL MOUNTED POWER WASH	●	-	-	-	-	-	0.75"	-	0.75"	0.75"	-	●	-
K121	WALL MOUNTED HOSE REEL (EXISTING RELOCATED)	●	-	-	-	-	-	0.75"	-	0.75"	0.75"	-	●	-

- KITCHEN EQUIPMENT NOTES:
1. INSTALL BLENDED WATER FILTER SYSTEM PROVIDED BY KITCHEN EQUIPMENT CONTRACTOR (K.E.C.) AND EXTEND DCW THRU FILTER TO EQUIPMENT. COORDINATE EXACT LOCATION OF FILTER SYSTEM WITH K.E.C.
2. EQUIPMENT SUPPLIED FROM K21 UTILITY DISTRIBUTION SYSTEM. REFER TO ADDITIONAL UTILITY DISTRIBUTION SYSTEM NOTES ON SHEET 411QF502.
3. EXTEND 2" DRAIN FROM WASH & RINSE COMPARTMENT TO DIRECT DRAIN AND 2" DRAIN FROM SANITIZE COMPARTMENT INDIRECT TO FLOOR DRAIN.
4. EXTEND DCW THRU WATER FILTER PROVIDED BY K.E.C.
5. VENT RISER IN STAINLESS STEEL CHASE CHASE BY K.E.C.
6. EXTEND DCW THRU K.E.C. SUPPLIED SOLENOIDS & VACUUM BREAKER TO DISPOSAL.
7. CONNECTORS INDICATED ARE FOR EACH UNIT (2 UNITS REQUIRED).
8. ALL ADAPTORS, CONNECTORS, INCREASERS, REDUCERS, ETC. REQUIRED TO CONNECT EQUIPMENT HOSES TO UTILITY DISTRIBUTION SYSTEM SHALL BE BY DIVISION 22.
9. ALL FLEXIBLE HOSE CONNECTORS WITH QUICK DISCONNECTS PROVIDED BY THE K.E.C. SHALL BE INSTALLED BY DIVISION 22.
10. REFER TO SHEET 411QF504 FOR ALL INTERCONNECTING PIPING AND ADDITIONAL INFORMATION.

FULLY SUPPRESSED

Revisions

CONSULTANTS:

JOHN DOE ARCHITECTS

REITANO DESIGN GROUP

THP

KLEINGERS GROUP

HEAPY PROJECT No.: 2013-04002

ARCHITECT/ENGINEERS:

Heapy Engineering

Mechanical Electrical Commissioning Technology

Nationally Recognized Leader in Sustainability / LEED

1400 W Dorothy Lane, Dayton OH 45409-1310

Ph: 937-224-0861 Fax: 937-224-5777 www.heapy.com

Drawing Title

LEGEND, SCHEDULE, DETAILS, NOTES AND INDEX

Approved: Project Director

Project Title

Correct Deficiencies Patient Kitchen

Location

Dayton, OH

Date

05/30/2014

Checked

RLT

Drawn

DPB/RLC

Project No.

VA Project No. 552-14-102

JPA Project No. 13001.00

Building Number

B411

Drawing Number

411P001

Dwg. of

Office of Construction and Facilities Management

Department of Veterans Affairs

three inches = one foot
one and one-half inches = one foot
one inch = one foot
three-quarters inch = one foot
one-half inch = one foot
three-eighths inch = one foot
one-quarter inch = one foot
one-eighth inch = one foot

GENERAL NOTES

A REFER TO SHEET 411P001 FOR LEGEND, SCHEDULE, NOTES, DETAILS AND DRAWING INDEX.

PLAN NOTES

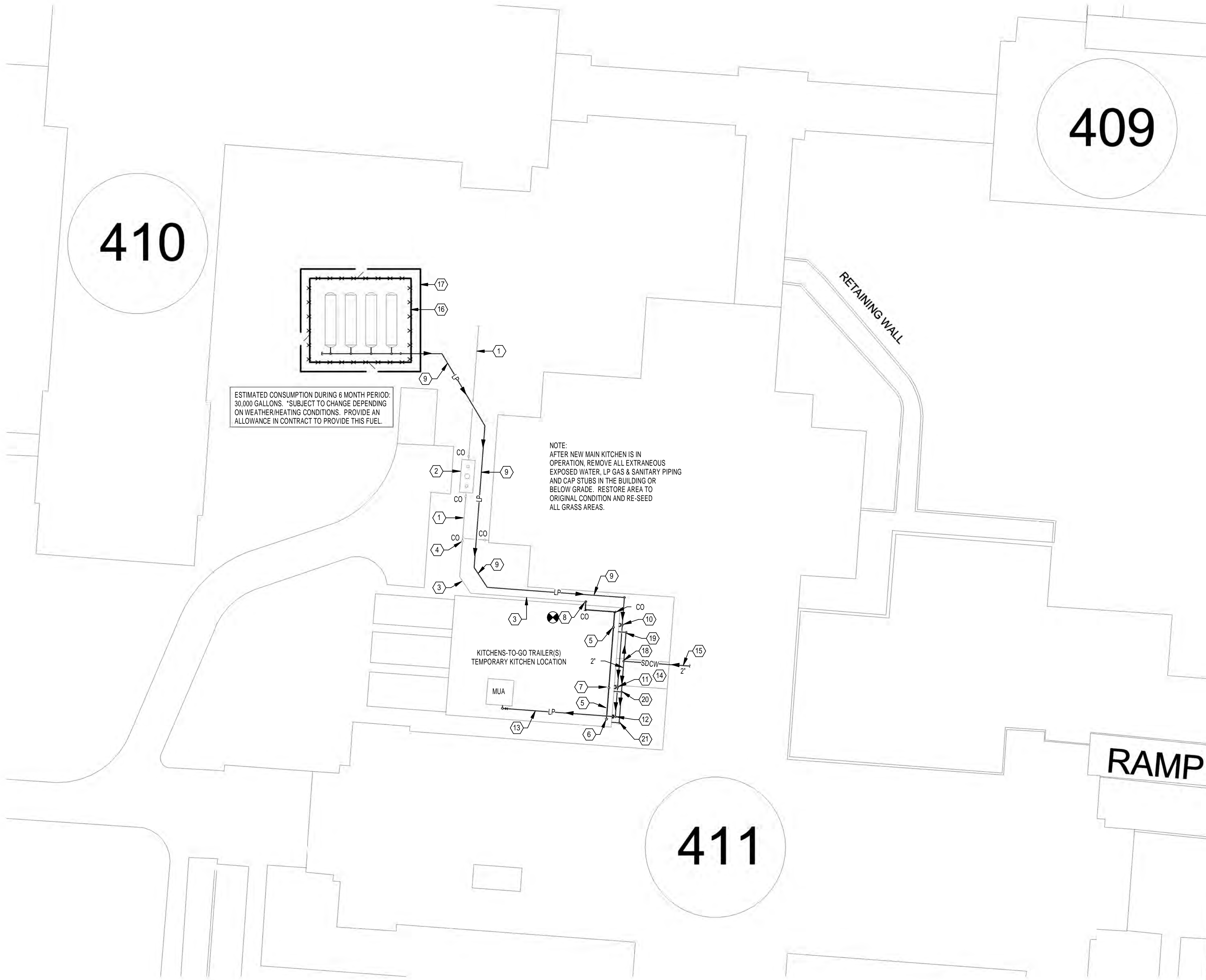
- EXISTING SANITARY PIPING LOCATED IN GRADE TO REMAIN.
- NEW KITCHEN GREASE INTERCEPTOR BY OTHERS. REFER TO CIVIL ENGINEERING DRAWINGS.
- NEW 4" SANITARY PIPING LOCATED IN GRADE BY OTHERS. REFER TO CIVIL ENGINEERING DRAWINGS.
- CONNECTION TO EXISTING 6" KITCHEN WASTE PIPING LOCATED IN GRADE BY OTHERS. REFER TO CIVIL ENGINEERING DRAWINGS.
- 3" KITCHEN WASTE DRAIN CONNECTION. PROVIDE SELF-REGULATING HEAT TRACE ON ALL PIPING LOCATED ABOVE GRADE. REFER TO KITCHENS-TO-GO (K-T-G) PLAN FOR EXACT LOCATION OF CONNECTION POINT.
- 4" SANITARY DRAIN CONNECTION. PROVIDE SELF-REGULATING HEAT TRACE ON ALL PIPING LOCATED ABOVE GRADE. REFER TO TEMPORARY MOBILE KITCHEN PLAN FOR EXACT LOCATION OF CONNECTION POINT.
- EXTEND NEW 4" KITCHEN WASTE MAIN BELOW TEMPORARY MOBILE KITCHEN TO SERVE SANITARY DRAIN CONNECTIONS. PROVIDE PIPE INSULATION PER 22.07.11, SECTION 3.4 AND SELF-REGULATING HEAT TRACE ON ALL PIPING LOCATED ABOVE GRADE. REFER TO TEMPORARY MOBILE KITCHEN PLAN FOR EXACT LOCATIONS OF CONNECTION POINTS.
- DROP NEW 4" KITCHEN WASTE MAIN PIPING TO CONNECTION POINT AT GRADE PROVIDED BY OTHERS. REFER TO CIVIL ENGINEERING DRAWINGS. PROVIDE SELF-REGULATING HEAT TRACE ON ALL PIPING LOCATED ABOVE GRADE.
- 1.5" HIGH PRESSURE LP GAS PIPING PER MANUFACTURER'S INSTALLATION REQUIREMENTS. DIRECT BURY ENTIRE LENGTH OF PIPING IN ACCORDANCE WITH ALL APPLICABLE CODES AND REGULATIONS. REMOVE WHEN TEMPORARY TRAILER(S) AND PIPING ARE REMOVED.
- 1.5" LP GAS CONNECTION HIGH UP ON TEMPORARY MOBILE KITCHEN. PROVIDE REGULATOR & MANIFOLD TO DELIVER 995,200 BTU/H LP GAS @ 13" W.C. AT POINT OF CONNECTION.
- 1" LP GAS CONNECTION HIGH UP ON TEMPORARY MOBILE KITCHEN. PROVIDE REGULATOR & MANIFOLD TO DELIVER 274,000 BTU/H LP GAS @ 13" W.C. AT POINT OF CONNECTION.
- 2.5" LP GAS CONNECTION HIGH UP ON TEMPORARY MOBILE KITCHEN. PROVIDE REGULATOR & MANIFOLD TO DELIVER 1,860,000 BTU/H LP GAS @ 13" W.C. AT POINT OF CONNECTION.
- EXTEND 1.5" LP GAS PIPING ON ROOF OF TEMPORARY MOBILE KITCHEN TO SERVE MOBILE KITCHEN SUPPLIED MUA LOCATED ON ROOF. REFER TO TEMPORARY MOBILE KITCHEN PLANS FOR EXACT CONNECTION LOCATION.
- TEMPORARY STICK-FRAMED CONNECTOR BY OTHERS.
- 2" SOFTENED DOMESTIC COLD WATER CONTO ON SHEET 411P0101.
- FOUR (4) TEMPORARY 1,000 GALLON PROPANE TANKS ENCOMPASSED BY 6'-0" HIGH CHAIN LINK FENCE WITH TWO (2) GATES. SET TANKS ON LEVEL GROUND WITH GRAVEL ON GRADE.
- SUPPLY, INSTALL AND MAINTAIN INTER-CONNECTED WATER-FILLED LONGITUDINAL CHANNELING BARRICADES PER OMTCO SECTION 06-00. BARRICADE IS TO MEET THE FWWA NCHRP 350 TL-3 STANDARD FOR LONGITUDINAL RE-DIRECTIVE BARRIER. THE BARRIER SHALL BE A HIGHLY PORTABLE AND CRASHWORTHY LONGITUDINAL BARRIER AND SHALL ACT AS ITS OWN CRASHWORTHY END TREATMENT.
- DROP 2" SOFTENED DOMESTIC COLD WATER OUT OF TEMPORARY CONNECTOR AND EXTEND 2" MANIFOLD TO SERVE TEMPORARY MOBILE KITCHEN DOMESTIC WATER CONNECTIONS. PROVIDE SELF-REGULATING HEAT TRACE ON ALL ABOVE GRADE PIPING OUTSIDE THE MAIN BUILDING.
- 1.5" SOFTENED DOMESTIC COLD WATER CONNECTION TO TEMPORARY MOBILE KITCHEN. PROVIDE SELF-REGULATING HEAT TRACE ON ALL EXPOSED ABOVE GRADE PIPING.
- 1" SOFTENED DOMESTIC COLD WATER CONNECTION TO TEMPORARY MOBILE KITCHEN. PROVIDE SELF-REGULATING HEAT TRACE ON ALL EXPOSED ABOVE GRADE PIPING.
- 1" SOFTENED DOMESTIC COLD WATER CONNECTION TO TEMPORARY MOBILE KITCHEN. PROVIDE SELF-REGULATING HEAT TRACE ON ALL EXPOSED ABOVE GRADE PIPING.



TYPICAL K-T-G INSTALLATION



TYPICAL K-T-G INSTALLATION



Site Plan
Scale: 1" = 20' - 0"



EXISTING DOCK AREA

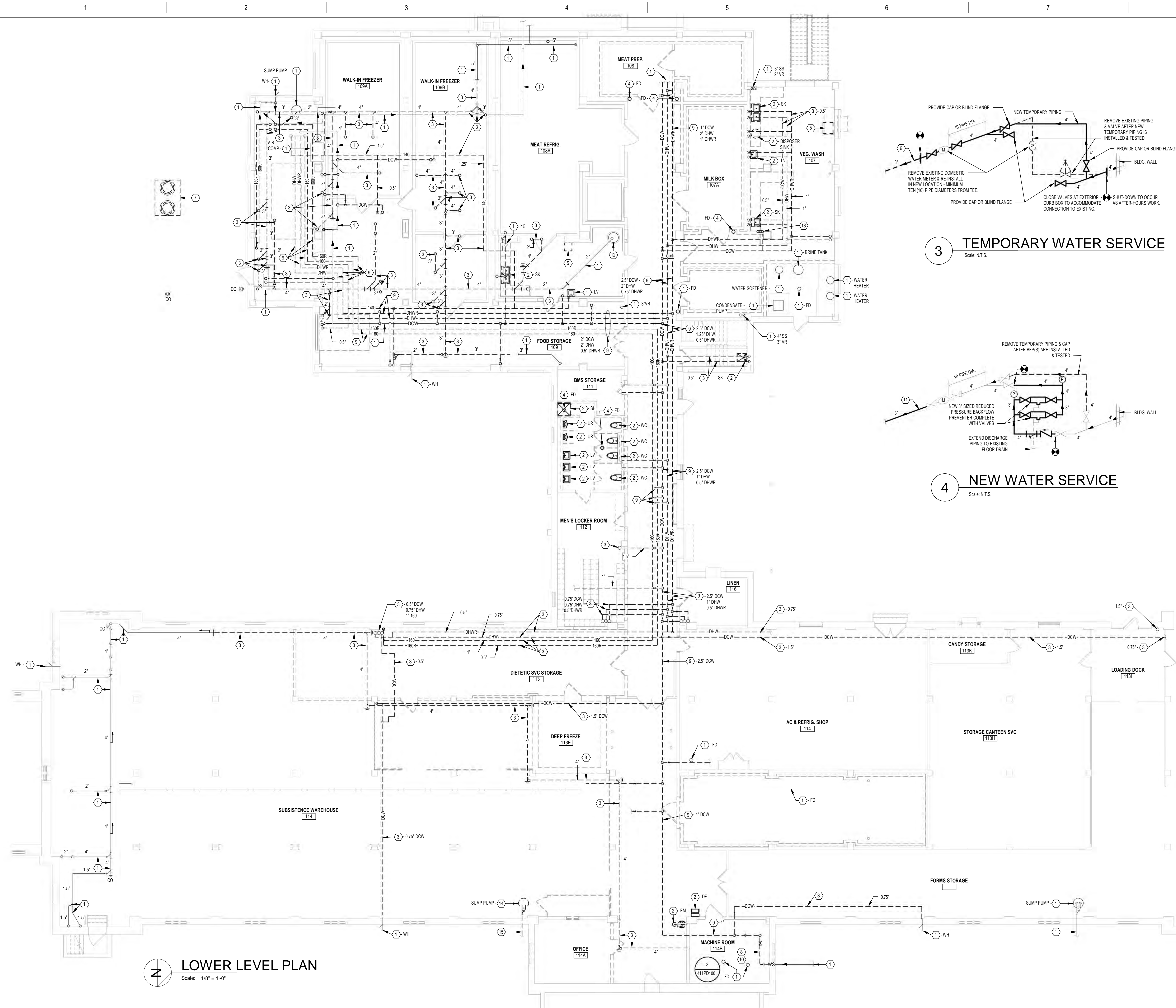


EXISTING DOCK AREA

FULLY SUPPRESSED

CONSULTANTS:		HEAPY PROJECT No.: 2013-04002		ARCHITECT/ENGINEERS:		Drawing Title		Project Title		Project No.		Office of Construction and Facilities Management	
JOHN DOE ARCHITECTS		REITANO DESIGN GROUP		THE KLEINGERS GROUP		SITE PLAN		Correct Deficiencies Patient Kitchen		VA Project No. 552-14-102 JPA Project No. 13001.00		Department of Veterans Affairs	
Revisions		Date		FIRM LICENSE No.: 01528		Approved: Project Director		Location Dayton, OH		Building Number B411		Drawing Number 411P002	
								Date 05/30/2014		Checked/ RLT		Drawn/ DPB/RLC	
										Dwg. of			

three inches = one foot
one and one-half inches = one foot
one inch = one foot
three-quarters inch = one foot
three-quarters inch = one foot
one-half inch = one foot
three-eighths inch = one foot
one-quarter inch = one foot
one-eighth inch = one foot



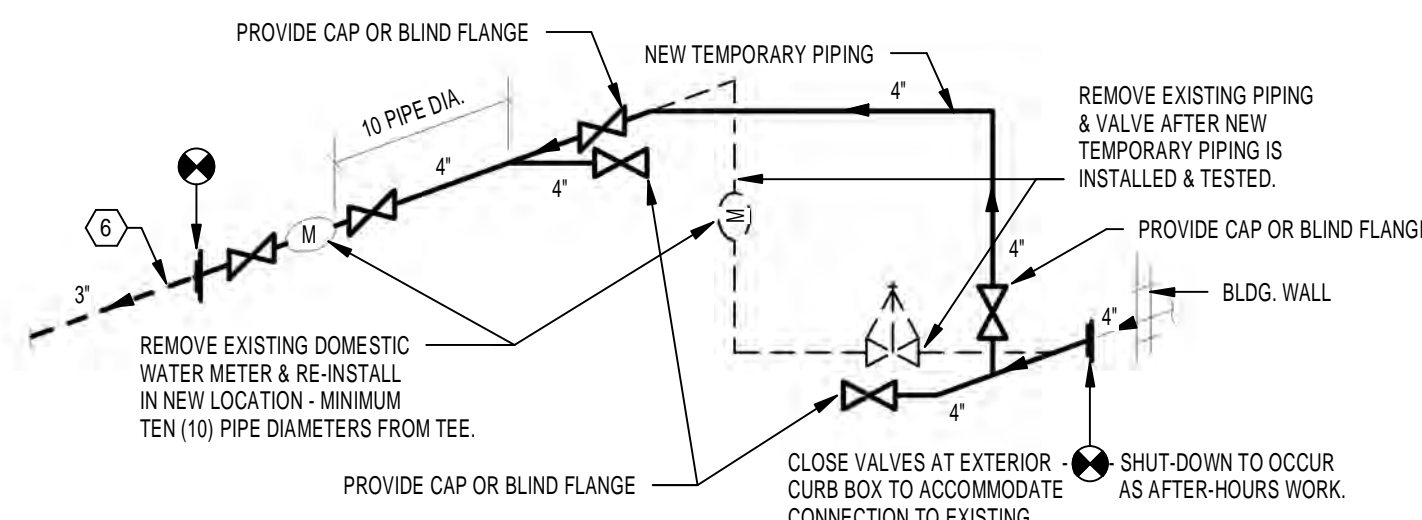
LOWER LEVEL PLAN
Scale: 1/8" = 1'-0"

GENERAL NOTES

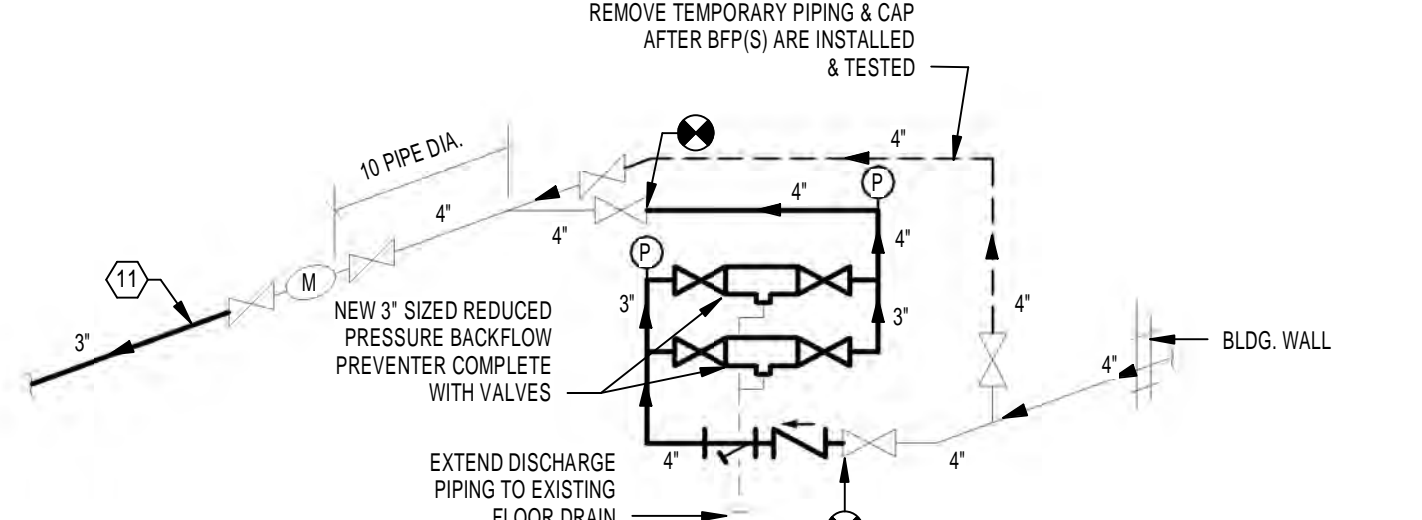
A REFER TO SHEET 411PD01 FOR LEGEND, SCHEDULE, NOTES, DETAILS AND DRAWING INDEX.

PLAN NOTES

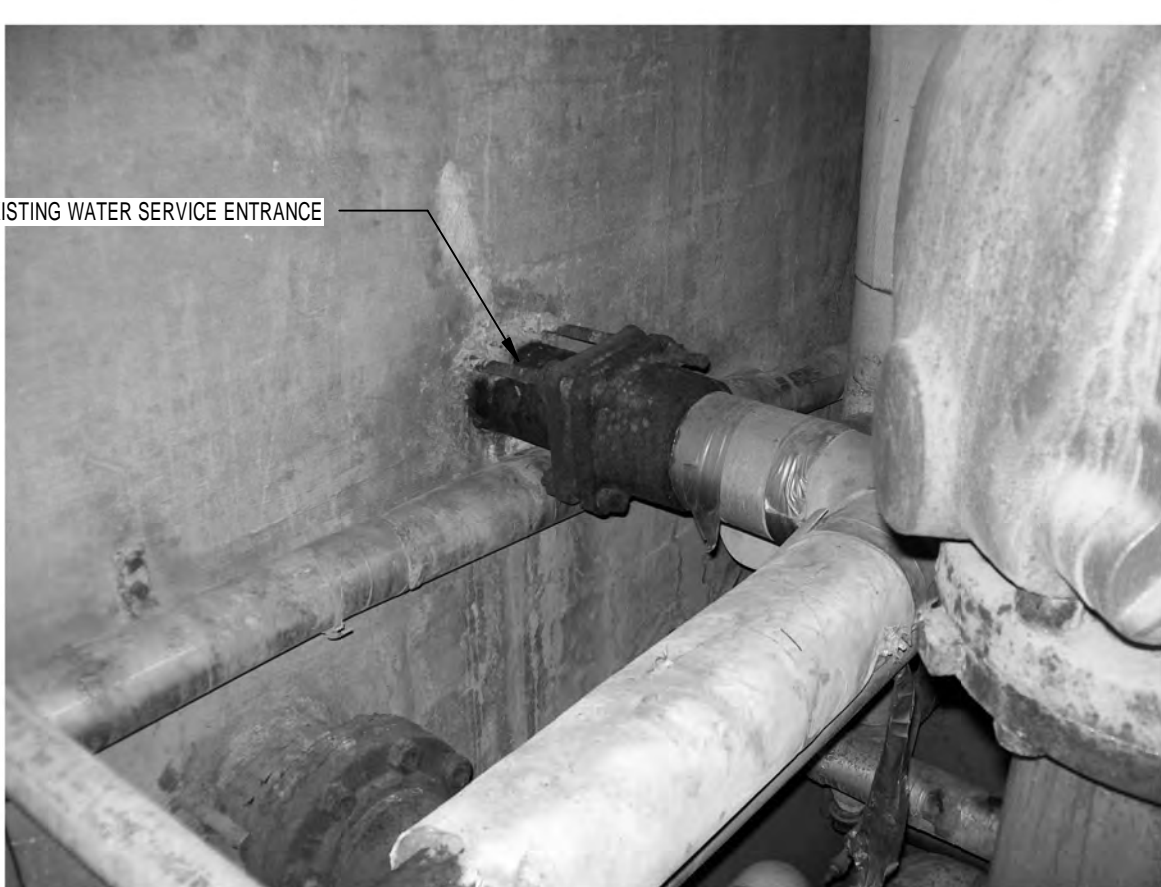
- EXISTING TO REMAIN.
- REMOVE EXISTING FLOOR DRAIN STRAINER, PLUG PIPING, AND INFL WITH CONCRETE TO FLUSH WITH FINISHED FLOOR SLAB.
- REMOVE EXISTING PIPING (SIZE AS INDICATED).
- REMOVE EXISTING FLOOR DRAIN STRAINER, PLUG PIPING, AND INFL WITH CONCRETE TO FLUSH WITH FINISHED FLOOR SLAB.
- REMOVE EXISTING 0.25" CA CONNECTION TO EXISTING KITCHEN EQUIPMENT AND ALL EXTRANEOUS PIPING BACK TO ACTIVE MAIN OR POINT OF NEW CONNECTION.
- REMOVE EXISTING 3" DCW BACK TO POINT OF NEW CONNECTION AFTER PARALLEL DCW MAIN IS INSTALLED, TESTED, INSPECTED, AND IS OPERATIONAL.
- EXISTING GREASE INTERCEPTOR. REFER TO CIVIL DRAWINGS.
- PROVIDE TEMPORARY WATER SERVICE ENTRANCE TO SERVE PARALLEL MAINS PRIOR TO REMOVAL OF EXISTING WATER SERVICE ENTRANCE AND INSTALLATION OF NEW WATER SERVICE ENTRANCE. REFER TO TEMPORARY WATER SERVICE DETAIL 3 AND EXISTING CONDITION PHOTOS 1 & 2 ON THIS SHEET.
- REMOVE EXISTING DCW, DHW & DHWR MAINS (SIZES AS INDICATED) AFTER NEW DCW, DHW, & DHWR PARALLEL MAINS HAVE BEEN INSTALLED, TESTED, INSPECTED AND ARE COMPLETELY OPERATIONAL. REFER TO SHEET 411PD100 FOR NEW WORK.
- PROVIDE NEW WATER SERVICE ENTRANCE WITH NEW DUPLEX REDUCED PRESSURE TYPE BACKFLOW PREVENTER AFTER TEMPORARY WATER SERVICE ENTRANCE IS TESTED AND OPERATIONAL. REFER TO SHEET 411PD100 FOR NEW WORK.
- EXISTING SUMP PUMP BASIN AND PIPING TO REMAIN. REPLACE EXISTING DUPLEX PUMPS. REFER TO SHEET 411PD100 FOR NEW WORK.
- REMOVE EXISTING 1.5" DCW, 1" DHW, & 0.5" DHWR SUPPLY RISERS TO POINT OF NEW CONNECTION ABOVE FIRST FLOOR CEILING. REFER TO SHEET 411PD101 FOR LOCATION OF POINT OF NEW CONNECTION.
- ABANDON EXISTING SUMP TANK IN PLACE. PUMP OUT REMAINING WATER IN SUMP TANK. CAP & INFL EXISTING PIPING SERVING SUMP TANK IN GRADE WITH CONCRETE. PERFORATE BOTTOM OF TANK IN A MINIMUM OF SIX (6) PLACES, AND FILL TANK WITH PEA GRAVEL, DRAIN ROCK, OR SAND - COMPACT PER BUILDING DEPARTMENT REQUIREMENTS. REMOVE AND RETAIN TANK LID, PUMPS, FLOATS, CONTROL ALARM PANEL, AND WIRING FOR RE-LOCATION TO NEW SUMP PUMP. REFER TO SHEET 411PD100 FOR LOCATION.
- CAP EXISTING STORM/FOUNDATION PIPING SERVING SUMP PUMP, INFL WITH CONCRETE, AND ABANDON.



3 TEMPORARY WATER SERVICE
Scale: N.T.S.



4 NEW WATER SERVICE
Scale: N.T.S.



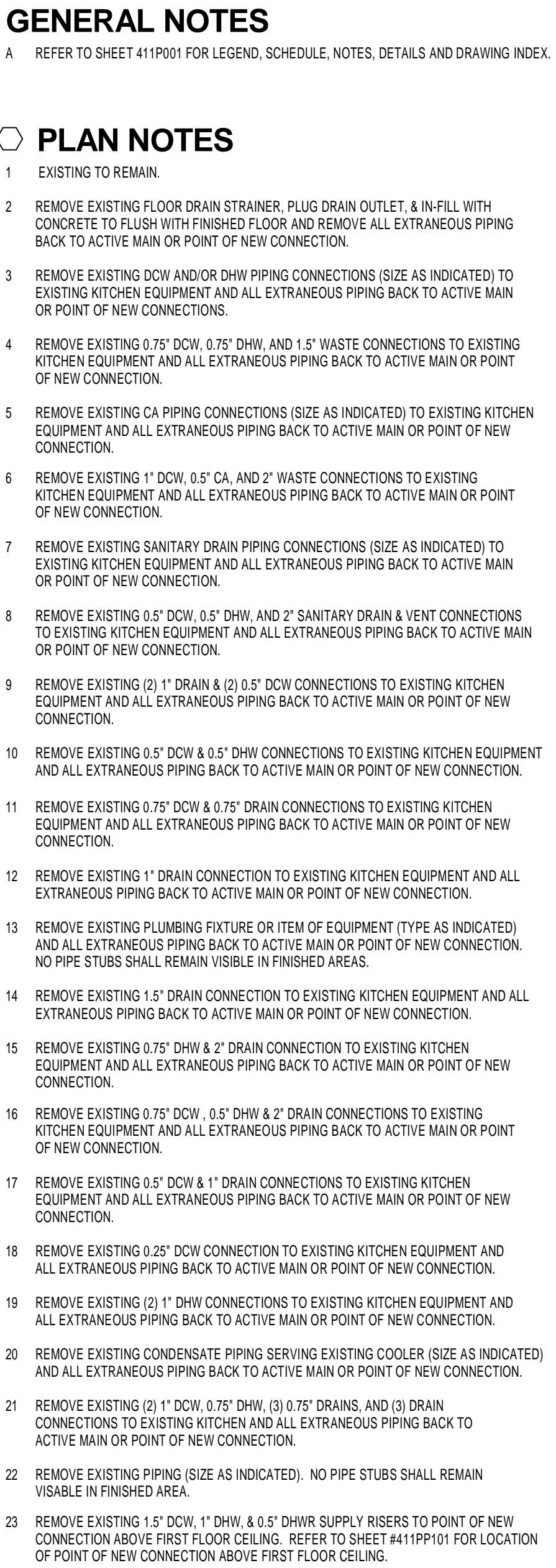
1 EXISTING WATER SERVICE ENTRANCE
Scale: N.T.S.



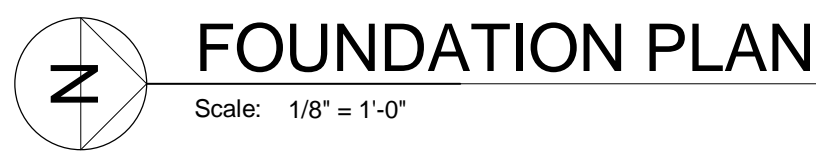
2 EXISTING WATER SERVICE MAIN SHUT-OFF VALVE & METER
Scale: N.T.S.

FULLY SUPPRESSED


--	--	--	--	--	--	--	--	--	--	--	--	--	--	--	--	--	--	--	--	--	--	--	--	--	--	--	--	--	--	--	--	--	--	--	--	--	--	--	--	--	--	--	--	--	--	--	--	--	--	--	--	--	--	--	--	--	--	--	--	--	--	--	--	--	--	--	--	--	--	--	--	--	--	--	--	--	--	--	--	--	--	--	--	--	--	--	--	--	--	--	--	--	--	--	--	--	--	--	--	--	--	--	--	--	--	--	--	--	--	--	--	--	--	--	--	--	--	--	--	--	--	--	--	--	--	--	--	--	--	--	--	--	--	--	--	--	--	--	--	--	--	--	--	--	--	--	--	--	--	--	--	--	--	--	--	--	--	--	--	--	--	--	--	--	--	--	--	--	--	--	--	--	--	--	--	--	--	--	--	--	--	--	--	--	--	--	--	--	--	--	--	--	--	--	--	--	--	--	--	--	--	--	--	--	--	--	--	--	--	--	--	--	--	--	--	--	--	--	--	--	--	--	--	--	--	--	--	--	--	--	--	--	--	--	--	--	--	--	--	--	--	--	--	--	--	--	--	--	--	--	--	--	--	--	--	--	--	--	--	--	--	--	--	--	--	--	--	--	--	--	--	--	--	--	--	--	--	--	--	--	--	--	--	--	--	--	--	--	--	--	--	--	--	--	--	--	--	--	--	--	--	--	--	--	--	--	--	--	--	--	--	--	--	--	--	--	--	--	--	--	--	--	--	--	--	--	--	--	--	--	--	--	--	--	--	--	--	--	--	--	--	--	--	--	--	--	--	--	--	--	--	--	--	--	--	--	--	--	--	--	--	--	--	--	--	--	--	--	--	--	--	--	--	--	--	--	--	--	--	--	--	--	--	--	--	--	--	--	--	--	--	--	--	--	--	--	--	--	--	--	--	--	--	--	--	--	--	--	--	--	--	--	--	--	--	--	--	--	--	--	--	--	--	--	--	--	--	--	--	--	--	--	--	--	--	--	--	--	--	--	--	--	--	--	--	--	--	--	--	--	--	--	--	--	--	--	--	--	--	--	--	--	--	--	--	--	--	--	--	--	--	--	--	--	--	--	--	--	--	--	--	--	--	--	--	--	--	--	--	--	--	--	--	--	--	--	--	--	--	--	--	--	--	--	--	--	--	--	--	--	--	--	--	--	--	--	--	--	--	--	--	--	--	--	--	--	--	--	--	--	--	--	--	--	--	--	--	--	--	--	--	--	--	--	--	--	--	--	--	--	--	--	--	--	--	--	--	--	--	--	--	--	--	--	--	--	--	--	--	--	--	--	--	--	--	--	--	--	--	--	--	--	--	--	--	--	--	--	--	--	--	--	--	--	--	--	--	--	--	--	--	--	--	--	--	--	--	--	--	--	--	--	--	--	--	--	--	--	--	--	--	--	--	--	--	--	--	--	--	--	--	--	--	--	--	--	--	--	--	--	--	--	--	--	--	--	--	--	--	--	--	--	--	--	--	--	--	--	--	--	--	--	--	--	--	--	--	--	--	--	--	--	--	--	--	--	--	--	--	--	--	--	--	--	--	--	--	--	--	--	--	--	--	--	--	--	--	--	--	--	--	--	--	--	--	--	--	--	--	--	--	--	--	--	--	--	--	--	--	--	--	--	--	--	--	--	--	--	--	--	--	--	--	--	--	--	--	--	--	--	--	--	--	--	--	--	--	--	--	--	--	--	--	--	--	--	--	--	--	--	--	--	--	--	--	--	--	--	--	--	--	--	--	--	--	--	--	--	--	--	--	--	--	--	--	--	--	--	--	--	--	--	--	--	--	--	--	--	--	--	--	--	--	--	--	--	--	--	--	--	--	--	--	--	--	--	--	--	--	--	--	--	--	--	--	--	--	--	--	--	--	--	--	--	--	--	--	--	--	--	--	--	--	--	--	--	--	--	--	--	--	--	--	--	--	--	--	--	--	--	--	--	--	--	--	--	--	--	--	--	--	--	--	--	--	--	--	--	--	--	--	--	--	--	--	--	--	--	--	--	--	--	--	--	--	--	--	--	--	--	--	--	--	--	--	--	--	--	--	--	--	--	--	--	--	--	--	--	--	--	--	--	--	--	--	--	--	--	--	--	--	--	--	--	--	--	--	--	--	--	--	--	--	--	--	--	--	--	--	--	--	--	--	--	--	--	--	--	--	--	--	--	--	--	--	--	--	--	--	--	--	--	--	--	--	--	--	--	--	--	--	--	--	--	--	--	--	--	--	--	--	--	--	--	--	--	--	--	--	--	--	--	--	--	--	--	--	--	--	--	--	--	--	--	--	--	--	--	--	--	--	--	--	--	--	--	--	--	--	--	--	--	--	--	--	--	--	--	--	--	--	--	--	--	--	--	--	--	--	--	--	--	--	--	--	--	--	--	--	--	--	--	--	--	--	--	--	--	--	--	--	--	--	--	--	--	--	--	--	--	--	--	--	--	--	--	--	--	--	--	--	--	--	--	--	--	--	--	--	--	--	--	--	--	--	--	--	--	--	--	--	--	--	--	--	--	--	--	--	--	--	--	--	--	--	--	--	--	--	--	--	--	--	--	--	--	--	--	--	--	--	--	--	--	--	--	--	--	--	--	--	--	--	--	--	--	--	--	--	--	--	--	--	--	--	--	--	--	--	--	--	--	--	--	--	--	--	--	--	--	--	--	--	--	--	--	--	--	--	--	--	--	--	--	--	--	--	--	--	--	--	--	--	--	--	--	--	--	--	--	--	--	--	--	--	--	--	--	--	--	--	--	--	--	--	--	--	--	--	--	--	--	--	--	--	--	--	--	--	--	--	--	--	--	--	--	--	--	--	--	--	--	--	--	--	--	--	--	--	--	--	--	--	--	--	--	--	--	--	--	--	--	--	--	--	--	--	--	--	--	--	--	--	--	--	--	--	--	--	--	--	--	--	--	--	--	--	--	--	--	--	--	--	--	--	--	--	--	--	--	--	--	--	--	--	--	--	--	--	--	--	--	--	--	--	--	--	--	--	--	--	--	--	--	--	--	--	--	--	--	--	--	--	--	--	--	--	--	--	--	--	--	--	--	--	--	--	--	--	--	--	--	--	--	--	--	--	--	--	--	--	--	--	--	--	--	--	--	--	--	--	--	--	--	--	--	--	--	--	--	--	--	--	--	--	--	--	--	--	--	--	--	--	--	--	--	--	--	--	--	--	--	--	--	--	--	--	--	--	--	--	--	--	--	--	--	--	--	--	--	--	--	--	--	--	--	--	--	--	--	--	--	--	--	--	--	--	--	--	--	--	--	--	--	--	--	--	--	--	--	--	--	--	--	--	--	--	--	--	--	--	--	--	--	--	--	--	--	--	--	--	--	--	--	--	--	--	--



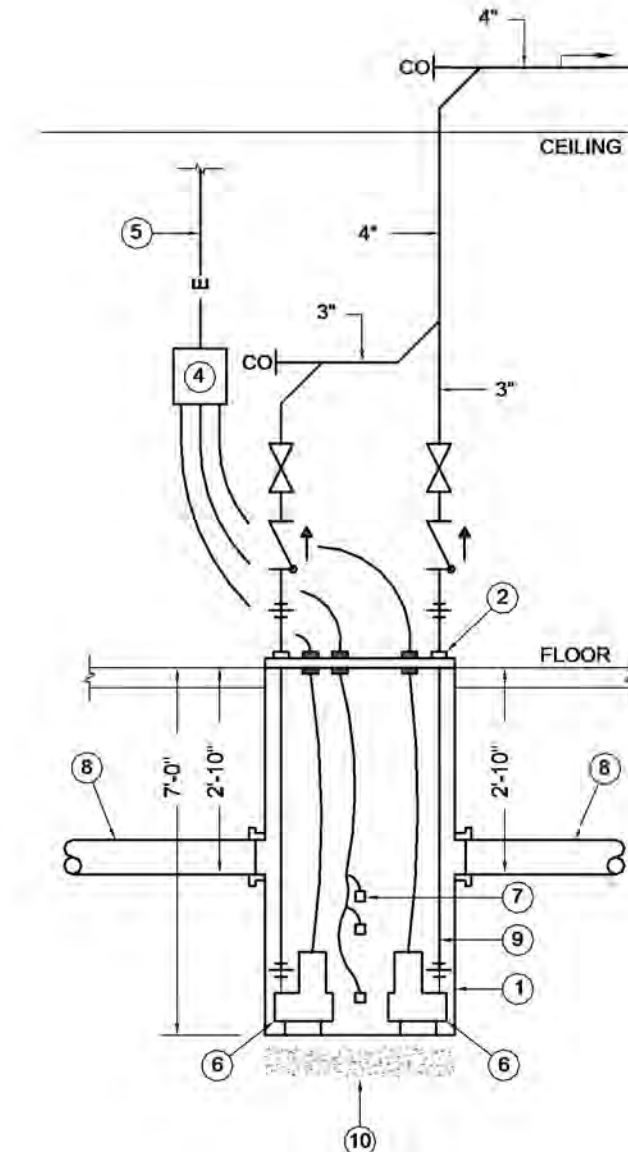
<div> <div>Revisions</div> <div>Date</div> </div>	<div>CONSULTANTS:</div> <div>     </div>			<div> <div>HEAPY PROJECT No.: 2013-04002</div>  <div>FIRM LICENSE No.: 01528</div> </div>		<div> <div>ARCHITECT/ENGINEERS:</div>  <div> <div>1400 W Dorothy Lane, Dayton OH 45409-1310</div> <div>Ph: 937-224-0861 Fax: 937-224-5777 www.heapy.com</div> </div> </div>		<div> <div>Drawing Title</div> <div>FIRST FLOOR PLAN - REMOVALS</div> <div>Approved: Project Director</div> </div>		<div> <div>Project Title</div> <div>Correct Deficiencies Patient Kitchen</div> <div>Location</div> <div>Dayton, OH</div> <div>Date</div> <div>05/30/2014</div> <div>Checked</div> <div>RLT</div> <div>Drawn</div> <div>DPB/RLC</div> </div>		<div> <div>Project No.</div> <div>552-14-102</div> <div>JPA Project No.</div> <div>13001.00</div> <div>Building Number</div> <div>B411</div> <div>Drawing Number</div> <div>411PD101</div> <div>Dwg. of</div> </div>		<div> <div>Office of Construction and Facilities Management</div> <div>Department of Veterans Affairs</div> </div>	
---	---	--	--	--	--	--	--	--	--	---	--	--	--	--	--



- 1 EXISTING TO REMAIN.
- 2 NEW GREASE INTERCEPTOR, REFER TO CIVIL ENGINEERING DRAWINGS.
- 3 PROVIDE ADAPTORS AND CONNECT TO PIPING. REFER TO CIVIL ENGINEERING DRAWINGS.
- 4 INDICATED ELEVATION IS BASED ON EXISTING PLANS. VERIFY EXISTING ELEVATION.

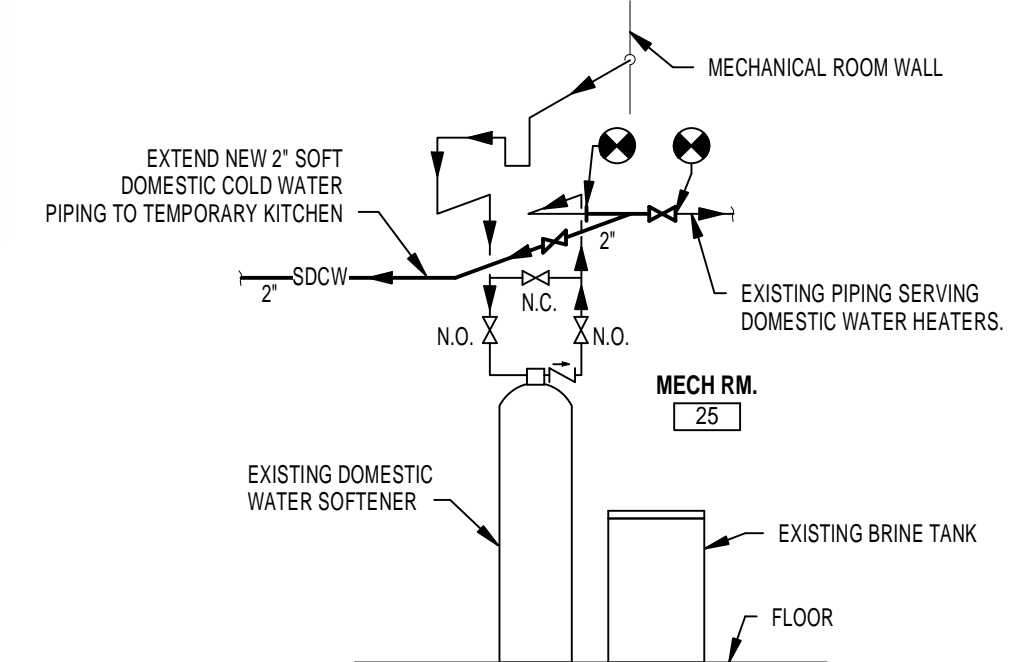
Drawing Title <div>FOUNDATION PLAN</div>	Project Title <div>Correct Deficiencies Patient Kitchen</div>			Project No. VA Project No. 552-14-102 JPA Project No. 13001.00		<div>Office of Construction and Facilities Management</div> <div>  Department of Veterans Affairs </div>
	Building Number <div>B411</div>			Drawing Number <div>411PP099</div>		
	Location <div>Dayton, OH</div>			Date <div>05/30/2014</div>		
Approved: Project Director	Checked <div>RLT</div>	Drawn <div>DPB/RLC</div>	Dwg. of			

three inches = one foot
one and one-half inches = one foot
one inch = one foot
three-quarters inch = one foot
one-half inch = one foot
three-eighths inch = one foot
one-quarter inch = one foot
one-eighth inch = one foot

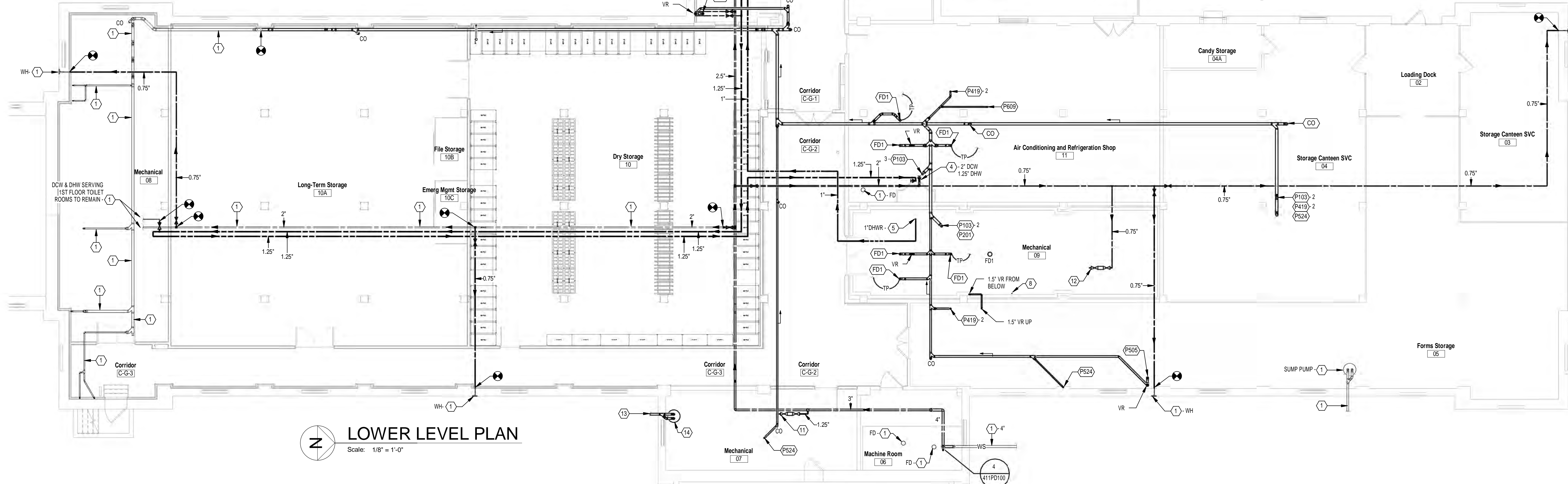


- NOTES**
- 48" DIA. X 84" DEEP FIBERGLASS BASIN WITH ANCHOR FLANGE.
 - RELOCATED GASKETED/BOLTED 1/4" STEEL NON-SKID BASIN COVER.
 - CONNECT INTO TOP OF LOCAL STORM WITH WYE FITTING.
 - RELOCATED DUPLEX ALTERNATING CONTROL ALARM PANEL. MOUNT ON ADJACENT WALL APPROXIMATELY 4' A.F.F.
 - EMERGENCY POWER PROVISION BY E.C.
 - RELOCATED SUBMERSIBLE PUMPS (DUPLEX): CAPACITY: 36 GPM @ 20 FT. HD. EACH MOTOR: 1/2 HP POWER: 120V - 1-PH
 - RELOCATED TRIPLEX FLOAT CONTROLS.
 - 4" STORM SEWER INLET LINE. VERIFY EXACT INVERT.
 - 3" PUMPED DISCHARGE OUTLET. TYPICAL.
 - MINIMUM 6" LEVELED SAND BED.

2 DUPLEX SUMP PUMP
Scale: N.T.S.



1 WATER SOFTENER
Scale: N.T.S.

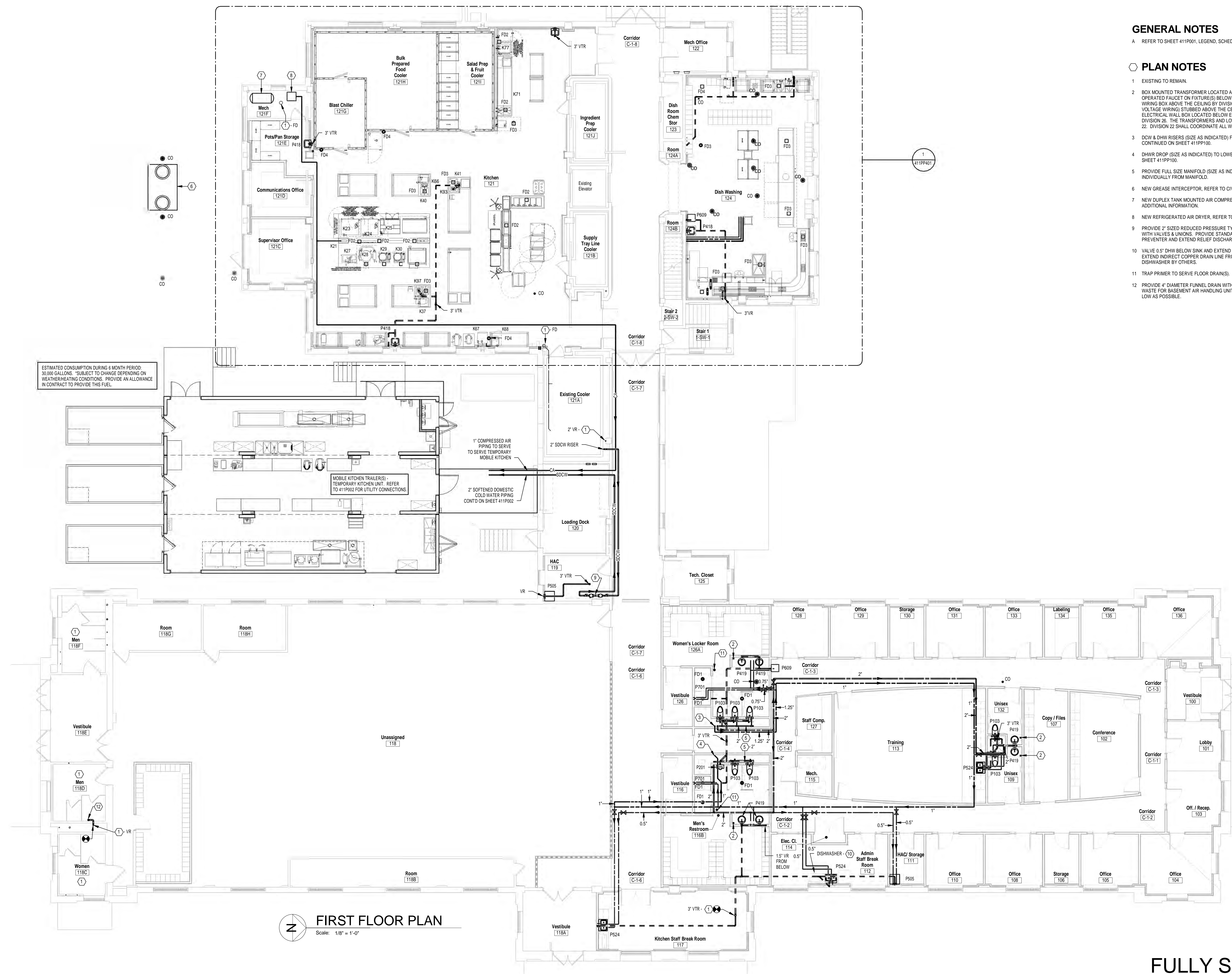


LOWER LEVEL PLAN
Scale: 1/8" = 1'-0"

- GENERAL NOTES**
- A REFER TO SHEET 411P001 FOR LEGEND, SCHEDULE, NOTES, DETAILS AND DRAWINGS INDEX.
- PLAN NOTES**
- EXISTING TO REMAIN.
 - BOX MOUNTED TRANSFORMER LOCATED ABOVE THE CEILING TO CONTROL SENSOR OPERATED FAUCET ON FIXTURE(S) BELOW. 120V-1PH POWER WILL BE LOCATED IN A WIRING BOX ABOVE THE CEILING BY DIVISION 26. 1/2" CONDUIT FOR LOW VOLTAGE (WIRING) STUBBED ABOVE THE CEILING AND EXTENDED DOWN TO AN ELECTRICAL WALL BOX LOCATED BELOW EACH LAVATORY WILL BE PROVIDED BY DIVISION 26. THE TRANSFORMER AND LOW VOLTAGE WIRING SHALL BE BY DIVISION 22. COORDINATE ALL WORK WITH DIVISION 26.
 - EXISTING SUMP BASIN AND PIPING TO REMAIN. REPLACE EXISTING DUPLEX PUMPS. CAPACITY: 12 GPM FLOW @ 23 FT. HEAD (E.A.) 0.5 HP @ 1725 RPM (E.A.) 115V/1PH/60HZ (E.A.)
 - CDW AND DHW RISERS (SIZE AS INDICATED) TO FLOOR ABOVE. PIPING CONTINUED ON SHEET 411P0101.
 - DHW RISER (SIZE AS INDICATED) FROM FLOOR ABOVE. PIPING CONTINUED ON SHEET 411P0101.
 - REFER TO WATER SOFTENER DETAIL #1 ON THIS SHEET.
 - NEW GREASE INTERCEPTOR. REFER TO CIVIL DRAWINGS.
 - TRAP PRIMER. REFER TO DETAIL D411P001.
 - EMERGENCY EQUIPMENT TEMPERING VALVE WITH INTEGRAL BY-PASS. CERTIFIED TO ASSE 1071. TO SERVE EMERGENCY SHOWER/EYEWASH. CAPACITY: 25 GPM @ 10 PSI PRESSURE DROP. SET UNIT TO PROVIDE 85 DEGREE F TEMPER WATER. SECURE TO WALL ABOVE ACCESSIBLE CEILING WITH HEAVY DUTY MOUNTING BRACKET.
 - EMERGENCY EQUIPMENT TEMPERING VALVE WITH INTEGRAL BY-PASS. CERTIFIED TO ASSE 1071. TO SERVE EMERGENCY EYEWASH. CAPACITY: 5 GPM @ 10 PSI PRESSURE DROP. SET UNIT TO PROVIDE 85 DEGREE F TEMPER WATER. SECURE TO WALL ABOVE ACCESSIBLE CEILING WITH HEAVY DUTY MOUNTING BRACKET.
 - PROVIDE 1" SIZE REDUCED PRESSURE TYPE BACKFLOW PREVENTER WITH BALL TYPE SHUT-OFF VALVES AS INDICATED TO ACCOMMODATE ISOLATION FOR MAINTENANCE. CAPACITY: 12 GPM @ 12 PSI LOSS. EXTEND RELIEF DISCHARGE PIPING TO FLOOR DRAIN. PROVIDE 1.25" BALL-TYPE SHUT-OFF VALVE & PIPE STUB FOR EXTENSION BY DIVISION 23. COORDINATE WORK WITH DIVISION 23.
 - PROVIDE 0.75" SIZE REDUCED PRESSURE TYPE BACKFLOW PREVENTER WITH BALL TYPE SHUT-OFF VALVES AS INDICATED TO ACCOMMODATE ISOLATION FOR MAINTENANCE. CAPACITY: 6 GPM @ 10 PSI LOSS. EXTEND RELIEF DISCHARGE PIPING TO FLOOR DRAIN. PROVIDE 0.75" BALL-TYPE SHUT-OFF VALVE & PIPE STUB FOR EXTENSION BY DIVISION 23. COORDINATE WORK WITH DIVISION 23.
 - CONNECT DISCHARGE TO EXISTING STORM DRAINAGE SYSTEM.
 - PROPOSED DUPLEX SUMP PUMP LOCATION. CONNECT EXISTING FOUNDATION DRAINAGE PIPING TO NEW SUMP. REFER TO DETAIL 2 ON THIS SHEET.

FULLY SUPPRESSED

CONSULTANTS: JOHN DOE ARCHITECTS		HEAPY PROJECT No: 2013-04002 GARY S. EDDICE E-52755 FIRM LICENSE No.: 01528		ARCHITECT/ENGINEERS: Heapy Engineering Mechanical Electrical Commissioning Technology Nationally Recognized Leader in Sustainability / LEED 1400 W Dorothy Lane, Dayton OH 45409-1310 Ph: 937-224-0861 Fax: 937-224-5777 www.heapy.com		Drawing Title LOWER LEVEL PLAN		Project Title Correct Deficiencies Patient Kitchen		Project No. VA Project No. 552-14-102 JPA Project No. 13001.00		Office of Construction and Facilities Management Department of Veterans Affairs	
Revisions						Approved: Project Director		Location Dayton, OH		Building Number B411		Drawing Number 411PP100	
								Date 05/30/2014		Checked RLT		Drawn DPB/RLC	
										Dwg. of			



GENERAL NOTES

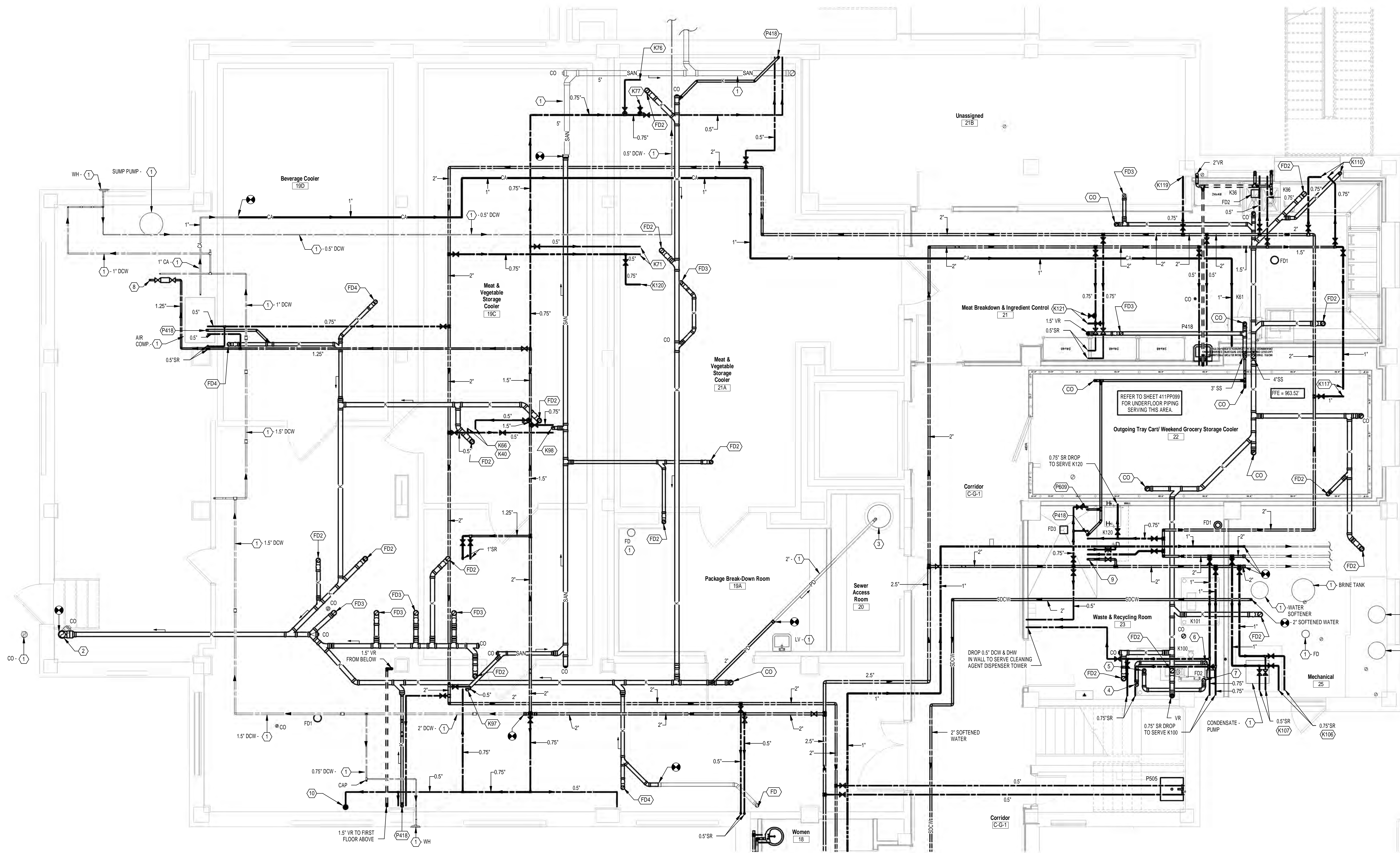
A REFER TO SHEET 411P001, LEGEND, SCHEDULES, AND DETAILS FOR GENERAL NOTES.

PLAN NOTES

1. EXISTING TO REMAIN.
2. BOQ MOUNTED TRANSFORMER LOCATED ABOVE THE CEILING TO CONTROL SENSOR OPERATED FAUCET (ON FIXTURES) BELOW. 120V-1PH POWER WILL BE LOCATED IN A WIRING BOB (SIZE INDICATED) THE CEILING. DIVISION 26. A 0.75 CONDUIT FOR LOW VOLTAGE WIRING) STUBBED ABOVE THE CEILING AND EXTENDED DOWN TO AN ELECTRICAL WALL BOX LOCATED BELOW EACH LAVATORY WILL BE PROVIDED BY DIVISION 26. THE TRANSFORMER AND LOW VOLTAGE WIRING SHALL BE BY DIVISION 26. DIVISION 22 SHALL COORDINATE ALL WORK WITH DIVISION 26.
3. DCW & DHW RISERS (SIZE AS INDICATED) FROM LOWER LEVEL BELOW. PIPING CONTINUED ON SHEET D4111P100.
4. DHWR DROP (SIZE AS INDICATED) TO LOWER LEVEL BELOW. PIPING CONTINUED ON SHEET D4111P100.
5. PROVIDE FULL SIZE MANIFOLD (SIZE AS INDICATED) AND SERVE EACH FIXTURE INDIVIDUALLY FROM MANIFOLD.
6. NEW GREESE INTERCEPTOR, REFER TO DETAIL DRAWINGS.
7. NEW DUPLEX TANK MOUNTED AIR COMPRESSOR, REFER TO DETAIL, D4111P001 FOR ADDITIONAL INFORMATION.
8. NEW REFRIGERATED AIR DRYER, REFER TO DETAIL D4111P001.
9. PROVIDE 2" SIZED REDUCED PRESSURE TYPE BACKFLOW PREVENTER COMPLETE WITH VALVES & UNICUT TO PROVIDE STANDARD CHECK VALVE BEFORE BACKFLOW PREVENTER AND EXTEND RELIEF DISCHARGE PIPING OVER TO MOP BASIN.
10. VALVE 0.5" DHW BELOW SINK AND EXTEND COPPER TUBING TO DOWNSHOWER. EXTEND INDIRECT COPPER DRAIN LINE FROM DOWNSHOWER TO SINK ON SINK TAILPIPE. DOWNSHOWER BY OTHERS.
11. TRAP PRIMER TO SERVE FLOOR DRAINS). REFER TO DETAIL D4111P001.
12. PROVIDE 4" DIAMETER FUNNEL DRAIN WITH AIR GAP FITTING ABOVE CEILING WITH 1 1/2" WASTE FOR BASEDRAIN AIR HANDLING UNIT CONDENSATE DRAINING. KEEP FUNNEL WITH 14" AS POSSIBLE.

FULLY SUPPRESSED

[illegible]







Scale: N.T.S.

FULLY SUPPRESSED

