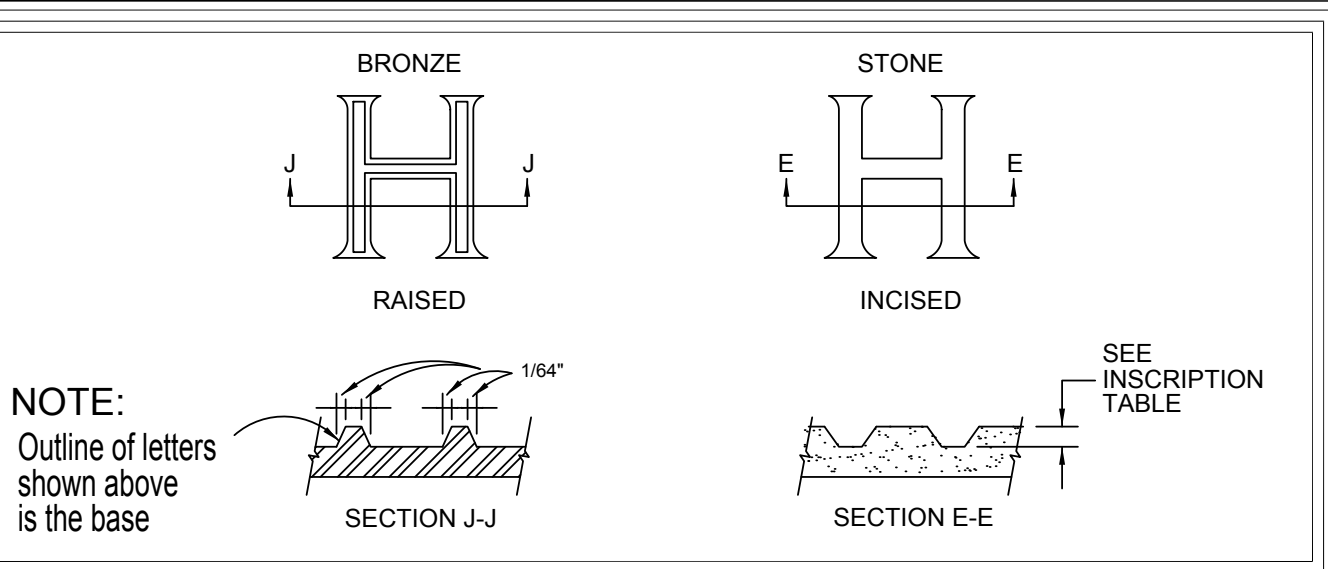
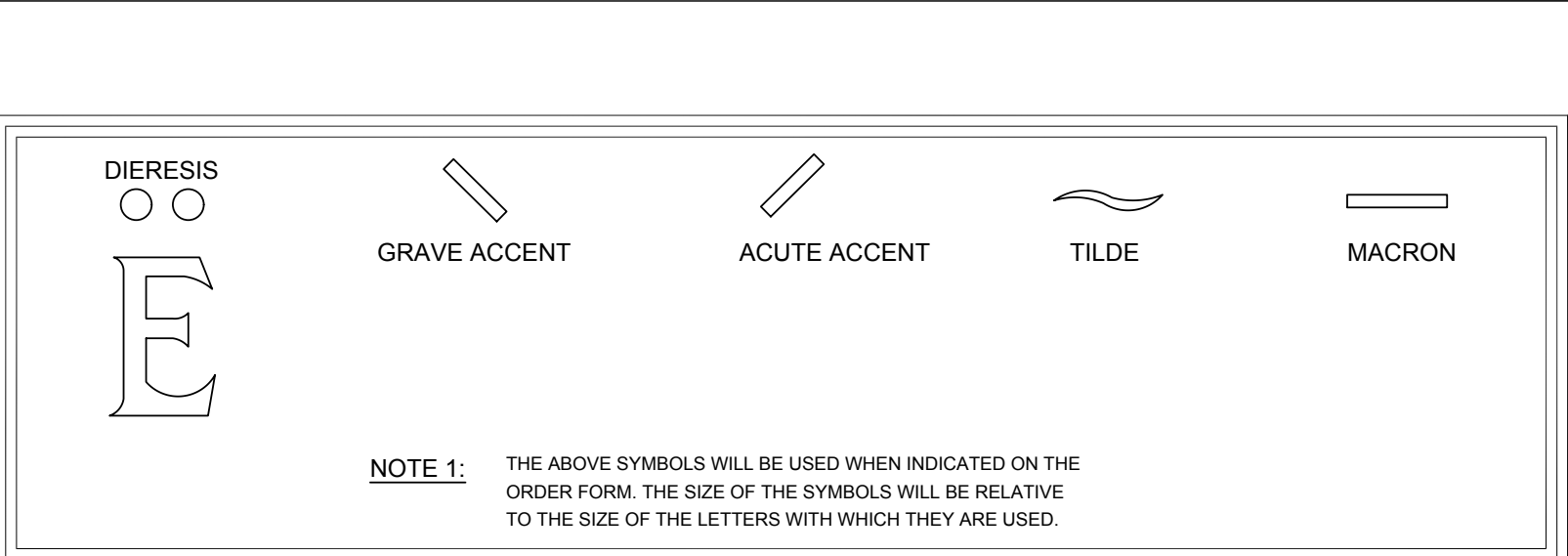


DRAWING LOCATION	MARKER TYPE	ITEM NAME AND LETTER HEIGHT								
		L1	L2	L3	L4	L5	L6	L7	EMBLEM	
		1 1/8"	1"	7/8"	3/4"	7/16"	3/8"	5/8"	2" OR 3"	
		DEPTH BY MARKER TYPE								
A-B1	B1	N/A	3/32"	N/A	3/32"	N/A	N/A	N/A	3/32"	
A-F-1	F1	7/32" - 9/32"	N/A	6/32" - 7/32"	6/32" - 7/32"	N/A	N/A	N/A	7/32" - 9/32"	
A-G1/J1/L1	G1/J1/L1	7/32" - 9/32"	N/A	6/32" - 7/32"	6/32" - 7/32"	N/A	N/A	N/A	7/32" - 9/32"	
A-MW-1/2/3	A1/C1	N/A	N/A	N/A	N/A	4/32" - 5/32"	N/A	4/32" - 5/32"	4/32" - 5/32"	
A-NOIS-1/2	E1/H1/I1	5/32" - 7/32"	4/32" - 5/32"	4/32" - 6/32"	4/32" - 6/32"	N/A	N/A	N/A	5/32" - 7/32"	
A-U1-1/2	U1	7/32" - 9/32"	N/A	6/32" - 7/32"	6/32" - 7/32"	N/A	N/A	N/A	7/32" - 9/32"	
A-V1/W1	V1/W1	7/32" - 9/32"	N/A	6/32" - 7/32"	6/32" - 7/32"	N/A	N/A	N/A	7/32" - 9/32"	
A-XA/XB/XC	XA/XB/XC	N/A	3/16" RAISED AND INSCRIBED	N/A	N/A	N/A	N/A	N/A	N/A	
A-YA	YA	N/A	3/16" RAISED AND INSCRIBED	N/A	N/A	N/A	N/A	N/A	N/A	
A-Z1	Z1	N/A	N/A	N/A	N/A	3/32"	3/32"	N/A	3/32"	

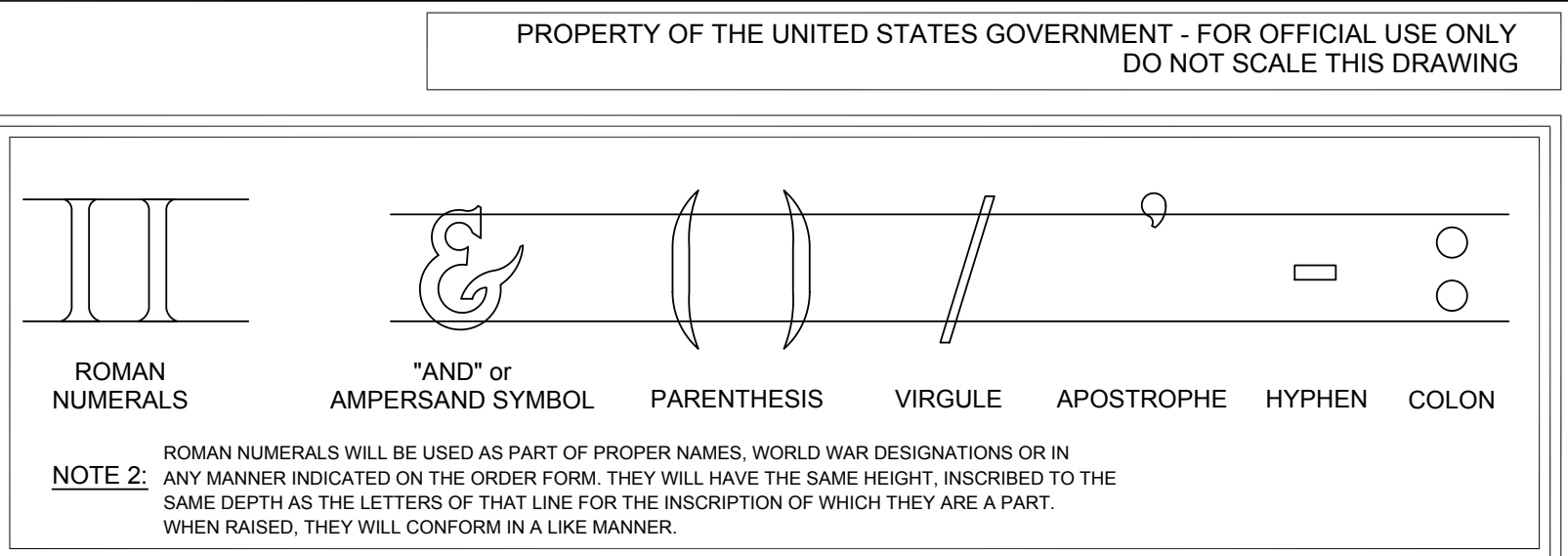
DEPTH BY TYPE  
NOTE: AS OF JULY 1, 2013 THESE DEPTHS SUPERCEDE PREVIOUSLY SPECIFIED DEPTHS AND MUST BE FOLLOWED IN LIEU OF DEPTHS SHOWN IN DRAWINGS RELATED TO SPECIFIC MONUMENT TYPES.



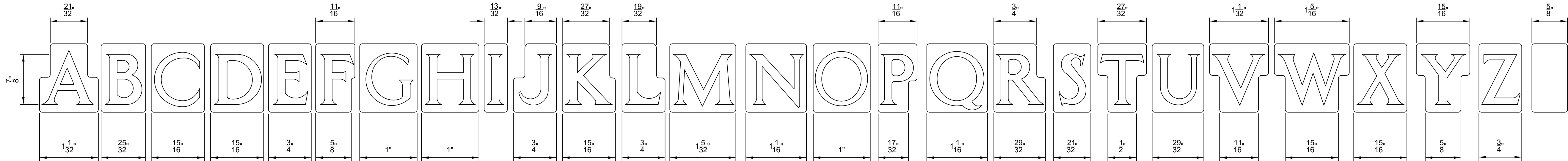
CROSS SECTION DETAIL



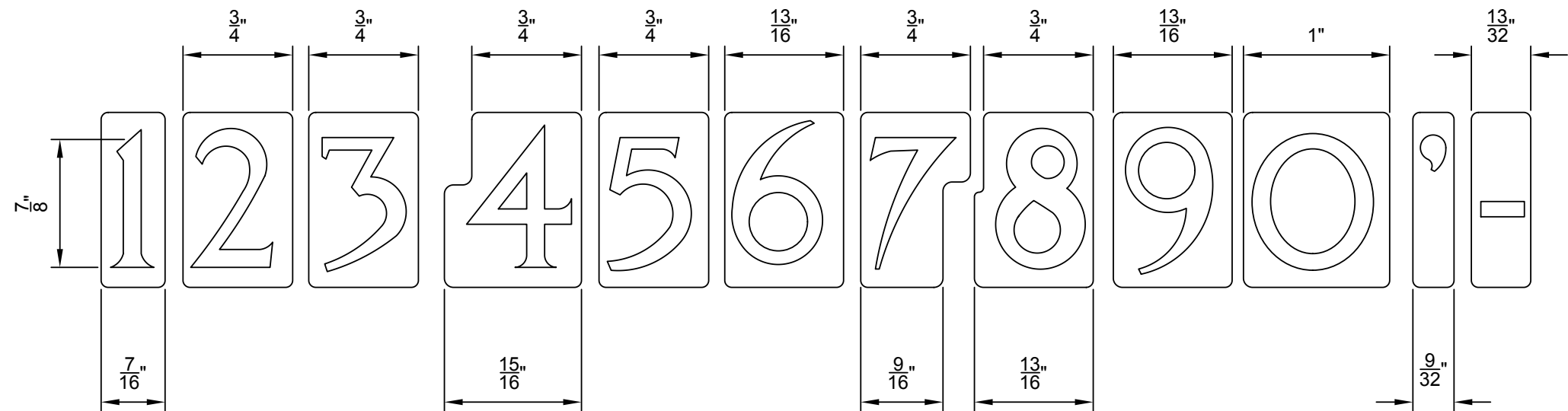
ACCENT MARKS



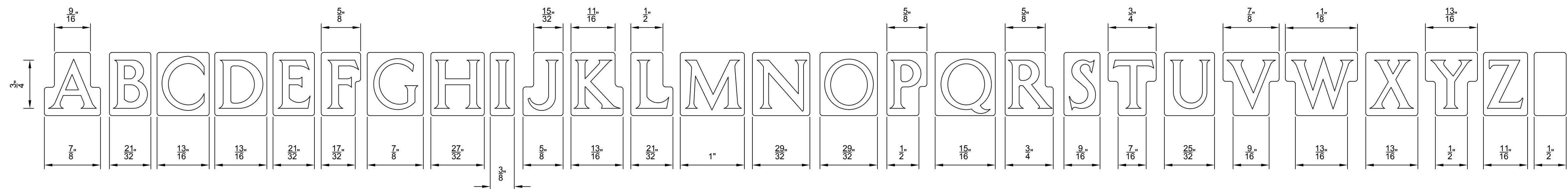
OTHER CHARACTERS



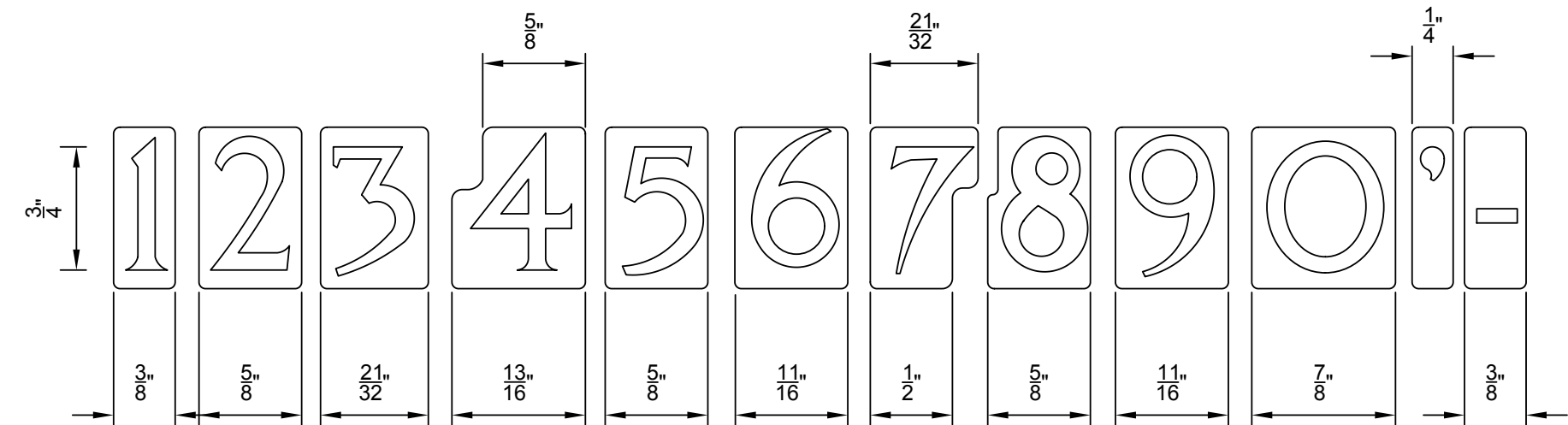
## ITEM L-3



## ITEM L-3 CONTINUED



## ITEM L-4



B	ADDED L5 & L6 & L7 FONTS, UPDATED INSCRIPTION TABLE	07/01/13
A	MOVED INCISED DETAILS TO SHT 2, DELETED EMBLEM 50, ADDED ACCENT MARKS & CHARACTERS	03-01-07
--	SUPERSEDES DRAWING ID-4 DATED 12-2-99	06/05/03
Revisions		Date

GENERAL NOTES  
1. FOR MARBLE AND GRANITE NICHE COVERS:  
SMALL CAPITAL LETTERS WILL BE USED IN THE FOLLOWING MANNER:  
FOR "C" IN MC DONALD, "AC" IN MAC DONALD,  
"2" IN JES, "2" IN 2D, LIEUTENANT, "32" IN 1ST, LIEUTENANT, ETC.  
THEY WILL HAVE THE SAME DEPTH OR RISE AS THE LARGE LETTERS.  
THE SIZE OF THE LETTERING WILL BE ITEM L-3 WHEN USED WITH  
ITEM L-1 AND ITEM L-4 WHEN USED WITH ITEM L-3.  
2. UPON WRITTEN APPROVAL OF THE COTR, SLIGHT REVISIONS MAY BE  
MADE TO L-3 AND L-4 LETTERS USED ON STONE NICHE COVERS WHICH ENLARGE THE  
CENTER AREAS OF LETTERS / NUMERALS TO PREVENT BLOWN LETTERING. REVISIONS  
ARE NOT TO CHANGE THE OVERALL SIZE, STYLE OR APPEARANCE OF LETTERING.



NATIONAL  
CEMETERY  
ADMINISTRATION

Drawing Title LETTERS, FONTS, NUMBERS & OTHER CHARACTERS		Project Title GOVERNMENT HEADSTONES, MARKERS, AND NICHE COVERS	Date JULY 1, 2013
Approved: Director, Memorial Programs Service Signed		Marker Type REFER TO DEPTH CHART	Checked KEE/KS
Approved: Chief of Operations, Memorial Programs Service Signed		Location A-LFN&OC-2.DWG	Drawn MLT SYSTEMS
		Digital File A-LFN&OC-2.DWG	Sheet 2 of 3

DRAWING NO.  
A-LFN&OC-2