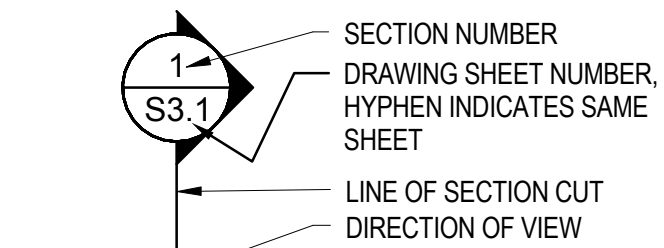


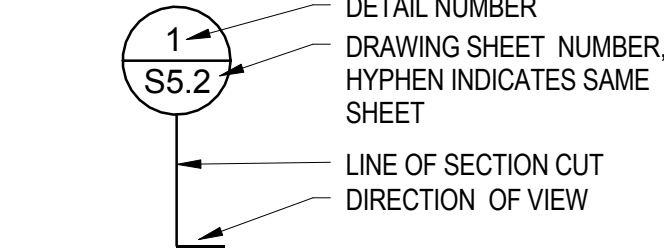
VA FORM 08-6231

REFERENCE SYMBOLS

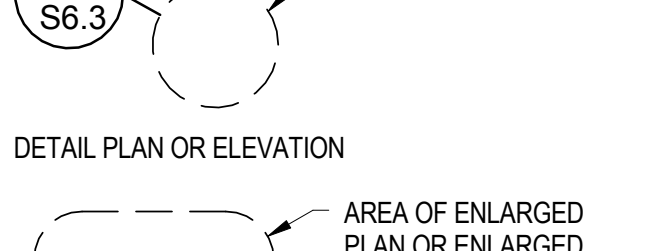
DETAIL/SECTION



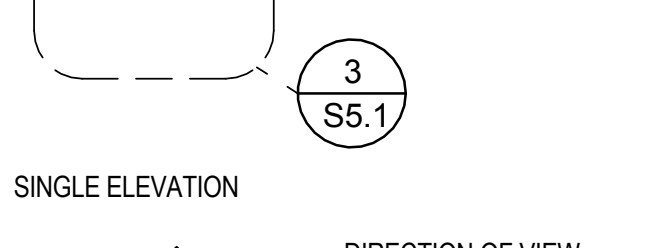
DETAIL



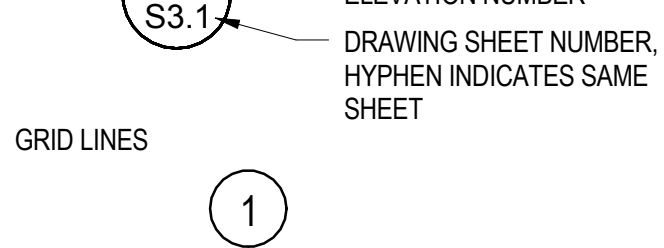
DETAIL PLAN OR ELEVATION



SINGLE ELEVATION



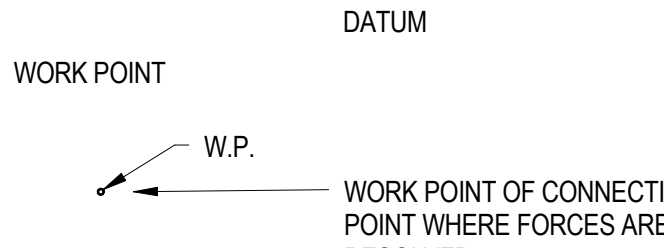
GRID LINES



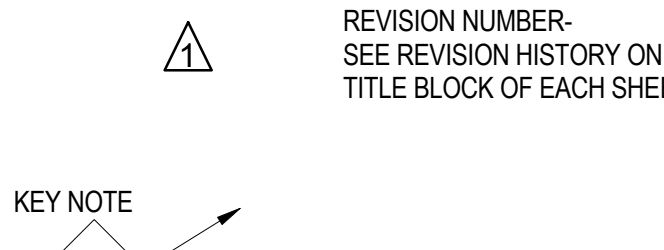
LEVEL LINE



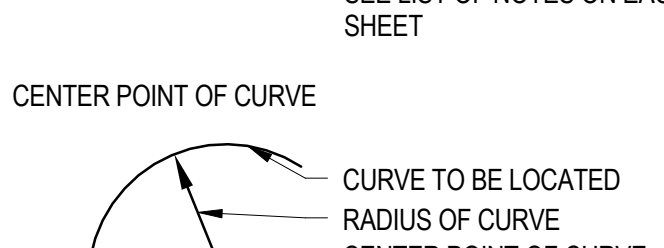
WORK POINT



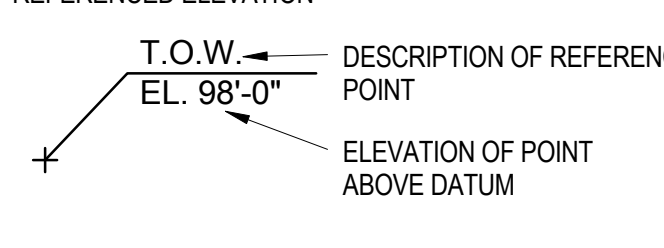
REVISION



KEY NOTE



CENTER POINT OF CURVE

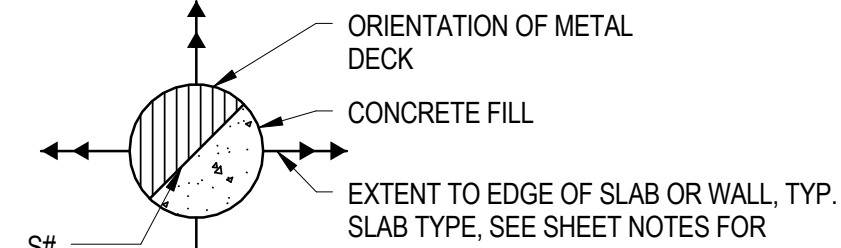


REFERENCED ELEVATION

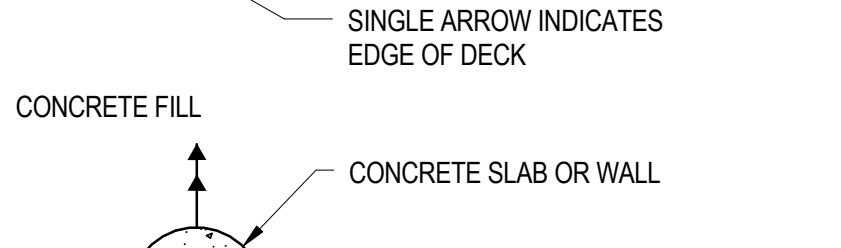


PLAN SYMBOLS

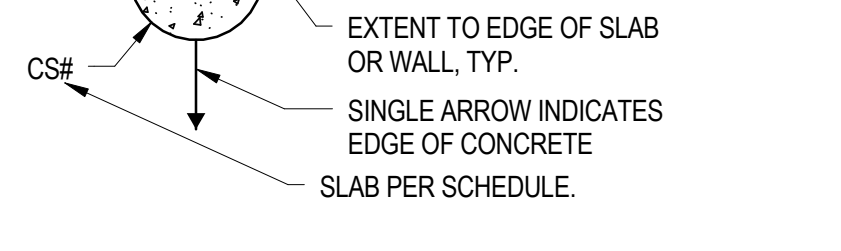
METAL DECK & FILL



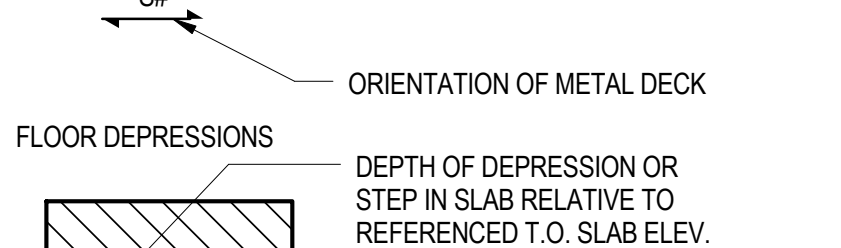
CONCRETE FILL



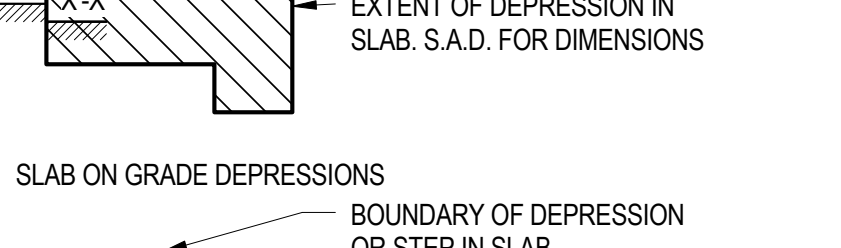
METAL DECK ORIENTATION



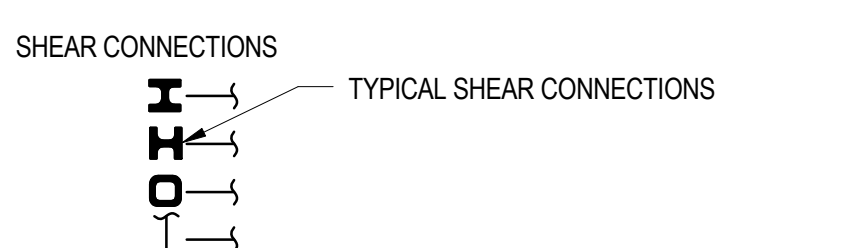
FLOOR DEPRESSIONS



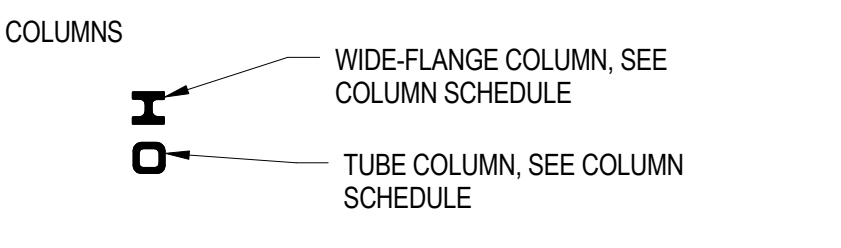
SLAB ON GRADE DEPRESSIONS



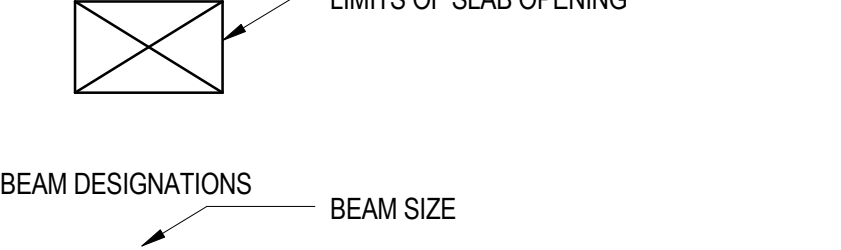
SHEAR CONNECTIONS



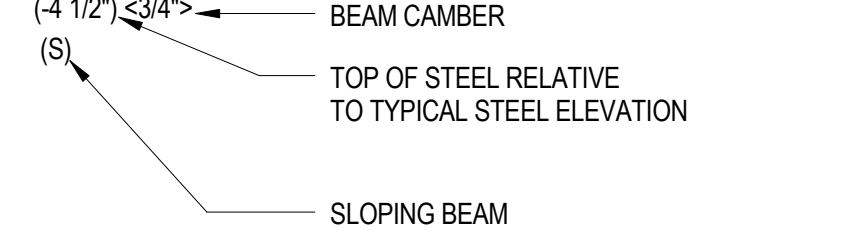
COLUMNS



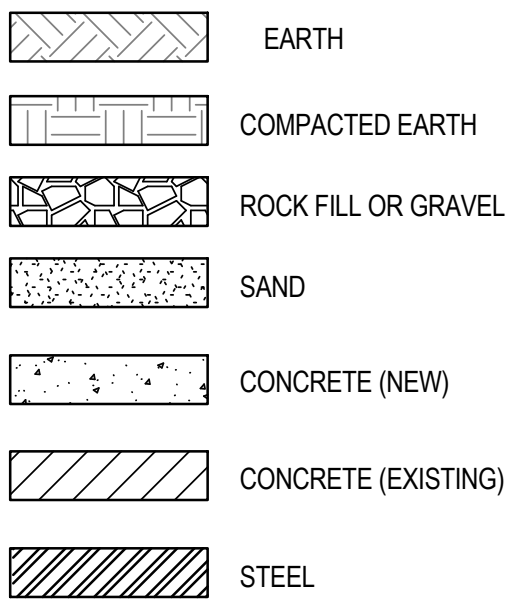
SLAB OPENING



BEAM DESIGNATIONS



MATERIAL SYMBOLS



ABBREVIATIONS

CL	CENTERLINE	LT	LIGHT
PL	PLATE	ld	DEVELOPMENT LENGTH
(E)	EXISTING	ldb	HOOK DEVELOPMENT LENGTH
(N)	NEW	ls	LAP SPLICE LENGTH
#	NUMBER	LWC	LIGHTWEIGHT CONCRETE
&	AND	MAX.	MAXIMUM
@	AT	M.B.	MACHINE BOLT
A.A.	ADHESIVE ANCHOR	MEZZ	MEZZANINE
A.B.	ANCHOR BOLT	MECH.	MECHANICAL
ABV	ABOVE	M.E.P.	MECHANICAL, ELECTRICAL, PLUMBING DOCUMENTS
ADDL	ADDITIONAL	MTL	METAL
ADJ.	ADJACENT	MFR	MANUFACTURER
AGGR	AGGREGATE	MIN.	MINIMUM
ALT.	ALTERNATE	MISC.	MISCELLANEOUS
ANSI	AMERICAN NATIONAL STANDARDS INSTITUTE	MTD.	MOUNTED
APPROX.	APPROXIMATE	N	NORTH
A.R.	ANCHOR RODS	N.F.	NEAR FACE
ARCH.	ARCHITECTURAL	N.I.C.	NOT IN CONTRACT
ASTM	AMERICAN SOCIETY FOR TESTING AND MATERIALS	N.S.	NEAR SIDE
AWG	AMERICAN WIRE GAUGE	N.T.S.	NOT TO SCALE
BET.	BETWEEN	NO. OR #	NUMBER
BLDG	BUILDING	NOM.	NOMINAL (DIAMETER)
BM, BMS	BEAM, BEAMS	NWC	NORMAL WEIGHT CONCRETE
B.O.F.	BOTTOM OF FOOTING	O.C.	ON CENTER
BOT.	BOTTOM	O.D.	OUTSIDE DIAMETER
BRG	BEARING	O.H.	OPPOSITE HAND
BSMT	BASEMENT	OPNG	OPENING
B.S.	BOTH SIDES	OPP.	OPPOSITE
C	CHANNEL	#	STANDARD STEEL PIPE W/ # DIA.
C.I.P.	CAST IN PLACE	PX#	X-STRONG STEEL PIPE W/ # DIA.
C.J.	CONTROL JOINT	PXX#	XX-STRONG STEEL PIPE W/ DIA.
CLG	CEILING	PC., PCS.	PIECE, PIECES
CLF	CLEAR	PERP.	PERPENDICULAR
CMU	CONCRETE MASONRY UNIT	P.J.	TILT-UP CONC. PANEL JOINT
COL.	COLUMN	PLF	POUNDS PER LINEAR FOOT
CONC.	CONCRETE	PP	PARTIAL PENETRATION
CONN.	CONNECTION	P	PAIR
CONSTR.	CONSTRUCTION	PT	POINT
CONT.	CONTINUOUS	PTN	PARTITION
CSK	COUNTERSINK	R.O.	ROUGH OPENING
CP	COMPLETE PENETRATION	R or RAD.	RADIUS
CTR	CENTER	REBAR	REINFORCING BAR
DBA	DEFORMED BAR ANCHOR	REF.	REFERENCE
DBL.	DOUBLE	REINF.	REINFORCED or REINFORCING
DK, DKG	DECK or DECKING	REQD	REQUIRED
DEM.	DEMOLITION	REV.	REVISE or REVISION
DET., DETS	DETAIL, DETAILS	RFG	ROOFING
DIAG.	DIAGONAL	S.A.D.	SEE ARCH DOCUMENTS
DIA. or Ø	DIAMETER	SCHED.	SCHEDULE
DN, DMS	DIMENSION, DIMENSIONS	SECT.	SECTION
DIST.	DISTANCE	SHT	SHEET
DN	DOWN	SHTG	SHEATHING
DO	DITTO	SIM.	SIMILAR
DWL, DWLS	DOWEL, DOWELS	SL	SLOPE
DWG, DWGS	DRAWING, DRAWINGS	SMS	SHEET METAL SCREW
EXP. ANCH.	EXPANSION ANCHOR	S.O.G.	SLAB ON GRADE
EA.	EACH	SPEC.	SPECIFICATION
E.F.	EACH FACE	SPECS.	SPECIFICATIONS
E.S.	EACH SIDE	SQ.	SQUARE
E.W.	EACH WAY	SS	STAINLESS STEEL
ELEC.	ELECTRICAL	STAGG.	STAGGER or STAGGERED
EL.	ELEVATION	STD	STANDARD
ELEV.	ELEVATOR	STIFF.	STIFFENER
EMBED.	EMBEDMENT	STR.	STIRRUP or STIRRUPS
E.O.S.	EDGE OF SLAB	STL	STEEL
EQ.	EQUAL	STRUC.	STRUCTURAL
EQUIP.	EQUIPMENT	SUBST.	SUBSTITUTE
E.J.	EXPANSION JOINT	SUSP.	SUSPENDED
EV.	EVERY	SYM.	SYMMETRICAL
EXCAV.	EXCAVATION	T&B	TOP and BOTTOM
EXP.	EXPANSION	THK	TONGUE and GROOVE
EXT.	EXTERIOR	THRD	THREADED
F.F.	FAR FACE	THRU	THROUGH
FDN	FOUNDATION	T.O.	TOP OF
FIN.	FINISH	T.O.S.	TOP OF STEEL
FLR., FLRS	FLOOR, FLOORS	T.O. SLAB	TOP OF STRUCTURAL SLAB
F.N.	FIELD NALING	TR	TREAD
F.O.	FACE OF	TS	TUBE STEEL
F.O.C.	FACE OF CONCRETE	TYP.	TYPICAL
FP	FIREPROOFING	U.O.N.	UNLESS OTHERWISE NOTED
F.S.	FAR SIDE	VENT.	VENTILATE
FT	FOOT OR FEET	VERT., (V)	VERTICAL
FTG, FTGS	FOOTING, FOOTINGS	V.I.F.	VERIFY IN FIELD
GA	GAUGE	W or WF	WIDE FLANGE
GALV.	GALVANIZED	W/	WITH
GL.	GLASS OR GLAZING	W/O	WITHOUT
GRND	GROUND	WO	WOOD
GR	GRADE	W.P.	WORK POINT
GYP. BD.	GYPSON BOARD	WT	WEIGHT
H.D.	HOLD DOWN	WWM	WELDED WIRE MESH
H.D.G.	HOT DIPPED GALVANIZED	X.H.VY.	EXTRA HEAVY
HDR	HEADER	XX.HVY.	DOUBLE EXTRA HEAVY
H.P.	HIGH POINT	X.STR.	EXTRA STRONG
HSB	HIGH STRENGTH BOLTS	XX STR.	DOUBLE EXTRA STRONG
HSS	HOLLOW STRUCTURAL STEEL		
HT	HEIGHT		
HK, HKS	HOOKS		
HORIZ., (H)	HORIZONTAL		
I.D.	INSIDE DIAMETER		
INFO.	INFORMATION		
JST., JSTS	JOIST, JOISTS		
JT	JOINT		
K.O.	KNOCK-OUT		
L	ANGLE		
LD	DEVELOPMENT-LENGTH		
L.P.	LOW POINT		
LEV.	LEVEL		
LLV	LONG LEG VERTICAL		
LLH	LONG LEG HORIZONTAL		
LOC.	LOCATION		
LONGIT.	LONGITUDINAL		

BID SUBMISSION
NOVEMBER 27, 2013

CONSULTANTS:



DEGENKOLB ENGINEERS
235 Montgomery Street, Suite 500
San Francisco, CA 94104
415.392.6952 Phone
415.981.3157 Fax
www.degenkolb.com
Project No. B2535008.00



ARCHITECT/ENGINEERS:



POLYTECH ASSOCIATES INC.
235 Pine Street, 17th Floor
San Francisco, CA 94104
TEL (415) 397-3117
FAX (415) 397-1517

Drawing Title

SYMBOLS AND ABBREVIATIONS

Approved: Project Director

Project Title

MPD - EMERGENCY SERVICE ANNEX
POLICE STATION

Location

795 WILLOW ROAD, MENLO PARK, CA

Date

OCTOBER 8, 2013

Checked

RMG

Drawn

KLM/MAM

Project Number

640-382

Building Number

410

Drawing Number

SS002

Dwg. of

Office of
Construction
and Facilities
Management



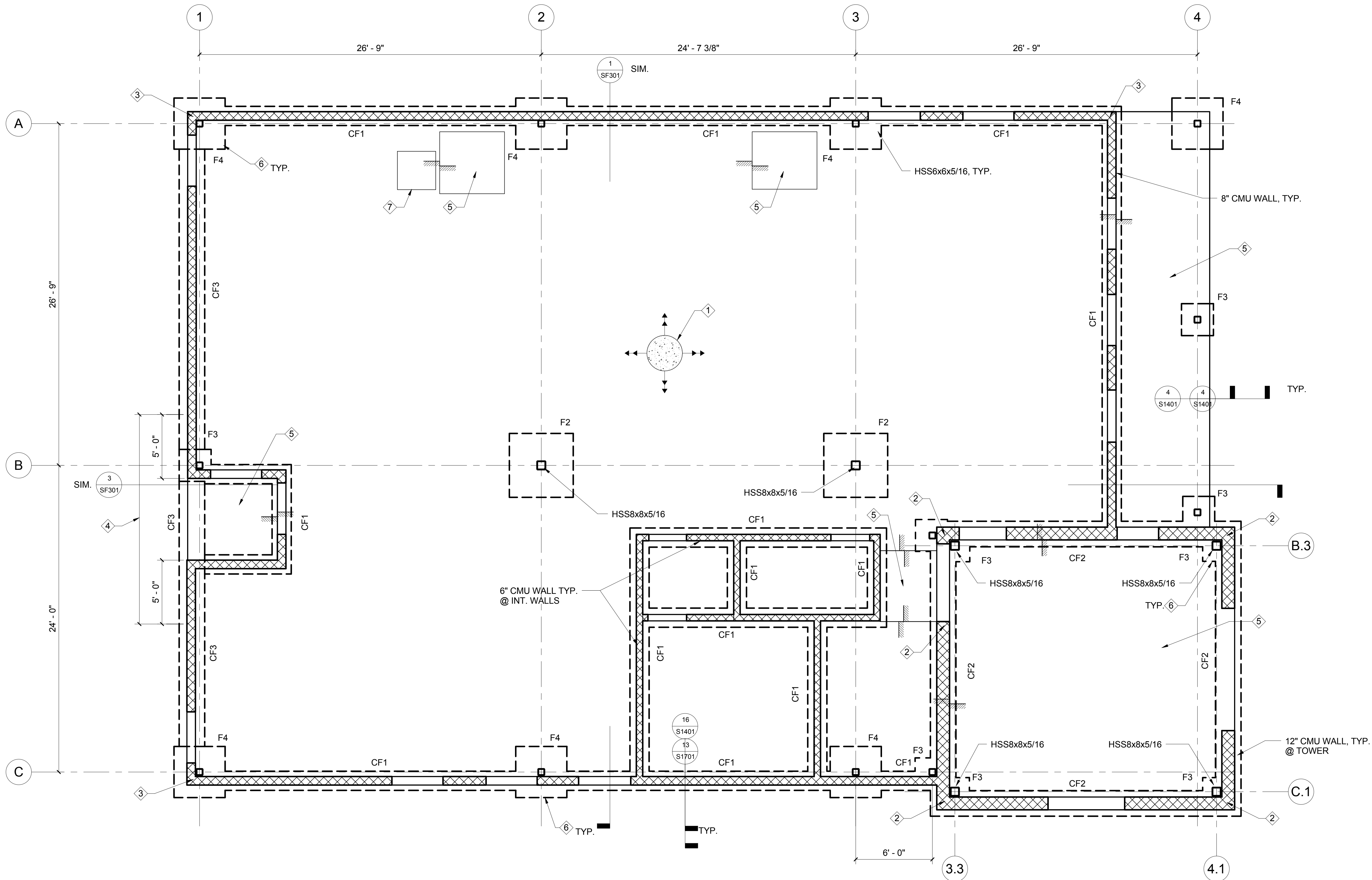


DEGENKOLB ENGINEERS
235 Montgomery Street, Suite 500
San Francisco, CA 94104
415.392.6952 *Phone*
415.981.3157 *Fax*
www.degenkolb.com
Project No. B2535008.00

 Department of
Veterans Affairs

1. TOP OF FOUNDATION -1'-6" FROM TOP OF SLAB U.O.N.

one eighth inch = one foot
one quarter inch = one foot
three eighths inch = one foot
one half inch = one foot
three quarters inch = one foot
one inch = one foot
one and one half inches = one foot
two inches = one foot
three inches = one foot



SHEET NOTES

1. TOP OF FOUNDATION -1'-6" FROM TOP OF SLAB U.O.N.

KEY NOTES

- 5" S.O.G. WITH #4 @ 18" O.C. E.W.
- 4#7 BARS @ CORNER OF 12" WALL, TYP.
- 4#5 BARS @ CORNER OF 8" WALL, TYP.
- REPLACE TYP. FOUNDATION TRANSVERSE BARS W/ #5 TIES @ 10" O.C.
- DEPRESSED SLAB, S.A.D.
- RUN CONTINUOUS FOOTING LONGITUDINAL BARS THROUGH SPREAD FOOTINGS, TYP.
- HOUSEKEEPING PAD 2/S1401.

BID SUBMISSION
NOVEMBER 27, 2013

CONSULTANTS:



DEGENKOLB ENGINEERS
235 Montgomery Street, Suite 500
San Francisco, CA 94104
415.392.6952 Phone
415.981.3157 Fax
www.degenkolb.com
Project No. B2535008.00

ARCHITECT/ENGINEERS:



POLYTECH ASSOCIATES INC.
235 Pine Street, 17th Floor
San Francisco, CA 94104
TEL (415) 397-3117
FAX (415) 397-1517

Drawing Title
FOUNDATION PLAN DEDUCT ALT #10

Approved: Project Director

Project Title
MPD - EMERGENCY SERVICE ANNEX
POLICE STATION

Location
795 WILLOW ROAD, MENLO PARK, CA

Date
OCTOBER 8, 2013

Checked
RMG

Drawn
KLM/MAM

Project Number
640-382

Building Number
410

Drawing Number

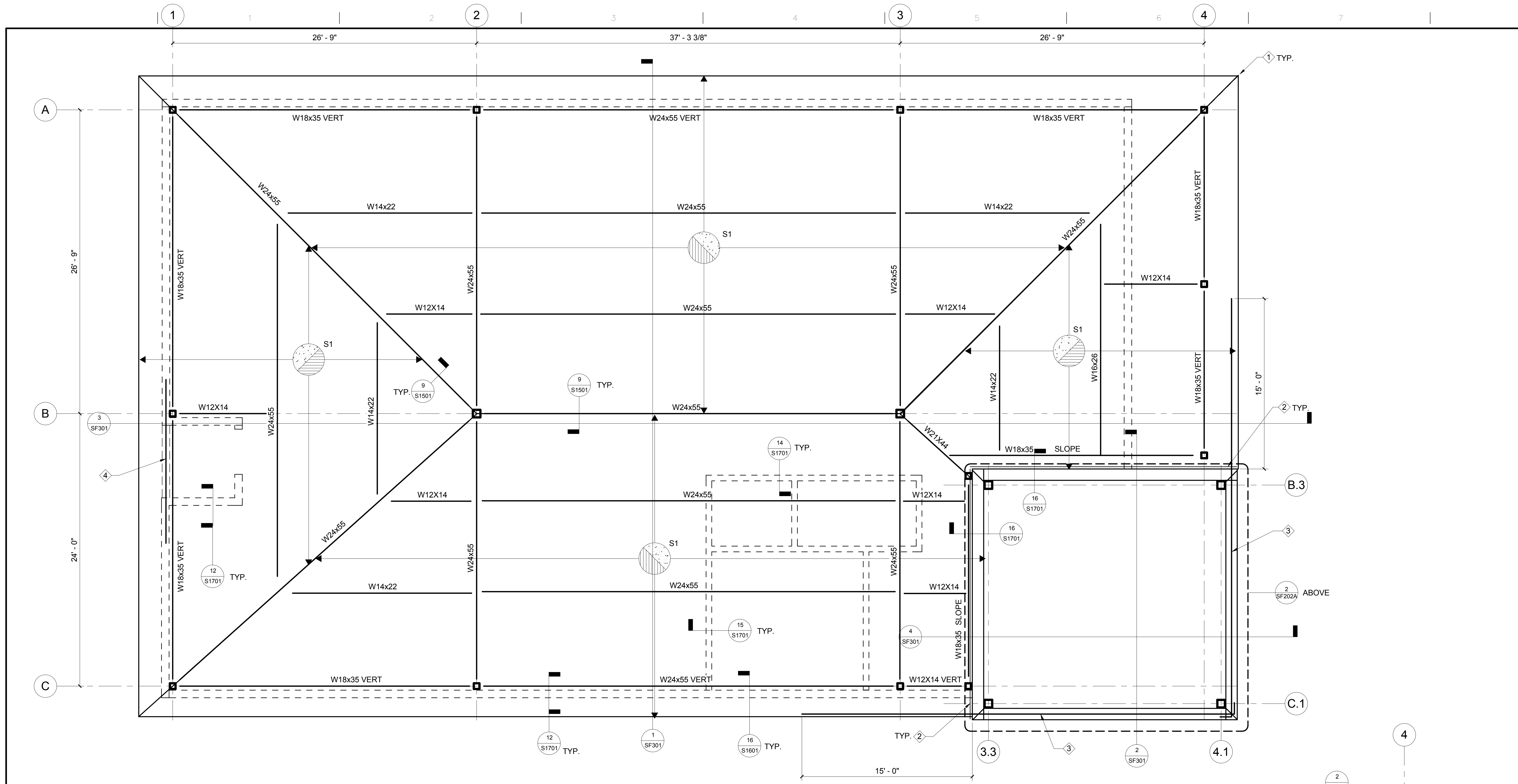
SF201B

Dwg. of

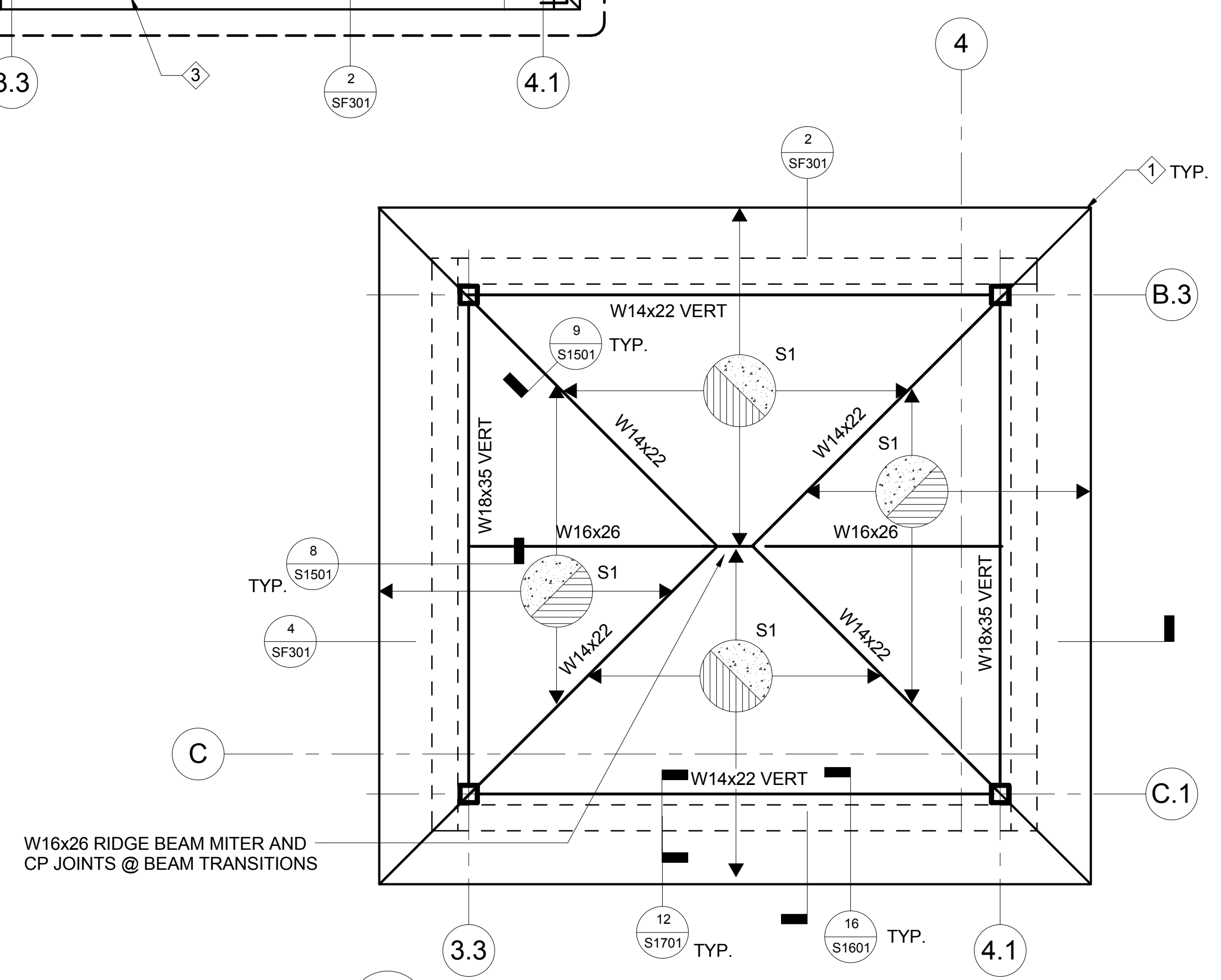
Office of
Construction
and Facilities
Management



one eighth inch = one foot
one quarter inch = one foot
one half inch = one foot
three eighths inch = one foot
one inch = one foot
one and one half inches = one foot
two inches = one foot
three inches = one foot
three and one half inches = one foot
four inches = one foot
five inches = one foot
six inches = one foot
seven inches = one foot
eight inches = one foot
nine inches = one foot
ten inches = one foot
eleven inches = one foot
twelve inches = one foot
thirteen inches = one foot
fourteen inches = one foot
fifteen inches = one foot
sixteen inches = one foot
seventeen inches = one foot
eighteen inches = one foot
nineteen inches = one foot
twenty inches = one foot
twenty one inches = one foot
twenty two inches = one foot
twenty three inches = one foot
twenty four inches = one foot
twenty five inches = one foot
twenty six inches = one foot
twenty seven inches = one foot
twenty eight inches = one foot
twenty nine inches = one foot
thirty inches = one foot
thirty one inches = one foot
thirty two inches = one foot
thirty three inches = one foot
thirty four inches = one foot
thirty five inches = one foot
thirty six inches = one foot
thirty seven inches = one foot
thirty eight inches = one foot
thirty nine inches = one foot
forty inches = one foot
forty one inches = one foot
forty two inches = one foot
forty three inches = one foot
forty four inches = one foot
forty five inches = one foot
forty six inches = one foot
forty seven inches = one foot
forty eight inches = one foot
forty nine inches = one foot
fifty inches = one foot
fifty one inches = one foot
fifty two inches = one foot
fifty three inches = one foot
fifty four inches = one foot
fifty five inches = one foot
fifty six inches = one foot
fifty seven inches = one foot
fifty eight inches = one foot
fifty nine inches = one foot
sixty inches = one foot
sixty one inches = one foot
sixty two inches = one foot
sixty three inches = one foot
sixty four inches = one foot
sixty five inches = one foot
sixty six inches = one foot
sixty seven inches = one foot
sixty eight inches = one foot
sixty nine inches = one foot
seventy inches = one foot
seventy one inches = one foot
seventy two inches = one foot
seventy three inches = one foot
seventy four inches = one foot
seventy five inches = one foot
seventy six inches = one foot
seventy seven inches = one foot
seventy eight inches = one foot
seventy nine inches = one foot
eighty inches = one foot
eighty one inches = one foot
eighty two inches = one foot
eighty three inches = one foot
eighty four inches = one foot
eighty five inches = one foot
eighty six inches = one foot
eighty seven inches = one foot
eighty eight inches = one foot
eighty nine inches = one foot
ninety inches = one foot
ninety one inches = one foot
ninety two inches = one foot
ninety three inches = one foot
ninety four inches = one foot
ninety five inches = one foot
ninety six inches = one foot
ninety seven inches = one foot
ninety eight inches = one foot
ninety nine inches = one foot
one hundred inches = one foot



1 ROOF FRAMING PLAN
1/4" = 1'-0"



2 HIGH ROOF FRAMING PLAN
1/4" = 1'-0"

SHEET NOTES

1. SLOPE FRAMING TO MATCH ROOF. BEAMS TO BE NORMAL TO ROOF PLANE, UNLESS NOTED "VERT". SEE 10/S1501 FOR BEAMS NOTED "VERT".
2. CONC. ON METAL DECK REINF. TO CONTINUE OVER ROOF RIDGES AND LAP





KEY NOTES

- 1 SHORE DECK UNTIL CONCRETE HAS CURED @ CORNERS OF ROOF
- 2 CONT. ANGLE DECK SUPPORT, SEE 16/S1701.
- 3 4-#5 BARS WITHIN TOWER WALL AND WITHIN CONC. ON METAL DECK ROOF SLAB. BUNDLE BARS IN TWO-2 BAR BUNDLES.
- 4 1-#9 HEADER AND TOP OF WALL BAR IN CMU HEADER OVER OPENING. EXTEND Ls INTO WALL BEYOND.

BID SUBMISSION
NOVEMBER 27, 2013

CONSULTANTS: DEGENKOLB ENGINEERS 235 Montgomery Street, Suite 500 San Francisco, CA 94104 415.392.6952 Phone 415.981.3157 Fax www.degenkolb.com Project No. B2535008.00				ARCHITECT/ENGINEERS: POLYTECH ASSOCIATES INC. 235 Pine Street, 17th Floor San Francisco, CA 94104 TEL (415) 397-3117 FAX (415) 397-1517		Drawing Title ROOF FRAMING PLAN		Project Title MPD - EMERGENCY SERVICE ANNEX POLICE STATION		Project Number 640-382	
Revisions:		Date		Approved: Project Director		Location 795 WILLOW ROAD, MENLO PARK, CA		Date OCTOBER 8, 2013		Checked RMG	
								Drawn KLM/MAM		Drawing Number SF202A	
								Dwg. of		Office of Construction and Facilities Management 	



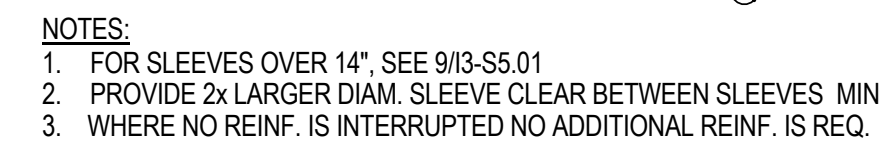
		CONSULTANTS:  DEGENKOLB ENGINEERS 235 Montgomery Street, Suite 500 San Francisco, CA 94104 415.392.6952 Phone 415.981.3157 Fax www.degenkolb.com Project No. B2535008.00				ARCHITECT/ENGINEERS:  POLYTECH ASSOCIATES INC. 235 Pine Street, 17th Floor San Francisco, CA 94104 TEL (415) 397-3117 FAX (415) 397-1517		Drawing Title PARTIAL PLANS Approved: Project Director		Project Title MPD - EMERGENCY SERVICE ANNEX POLICE STATION Location 795 WILLOW ROAD, MENLO PARK, CA		Project Number 640-382 Building Number 410 Drawing Number SF203 Dwg. of		Office of Construction and Facilities Management  Department of Veterans Affairs	
Revisions:		Date						Date OCTOBER 8, 2013		Checked RMG		Drawn KLM/MMM			

[illegible]

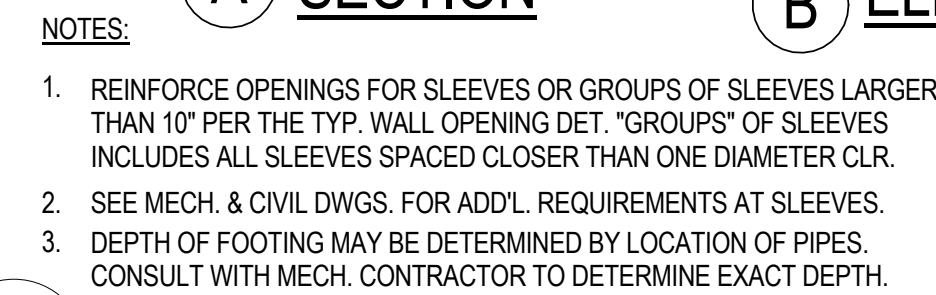
DEGENKOLB ENGINEERS
235 Montgomery Street, Suite 500
San Francisco, CA 94104
415.392.6952 *Phone*
415.981.3157 *Fax*
www.degenkolb.com
Project No. B2535008.00



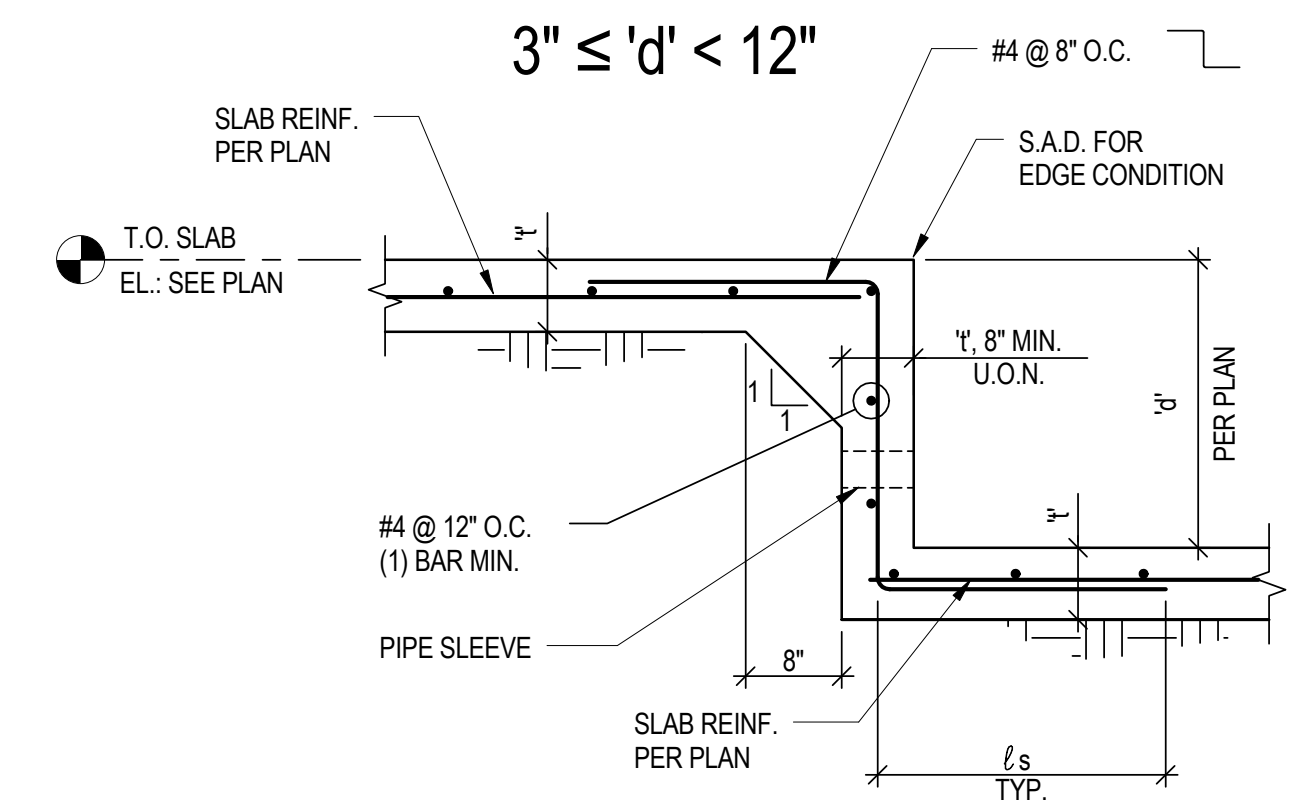




N.T.S.

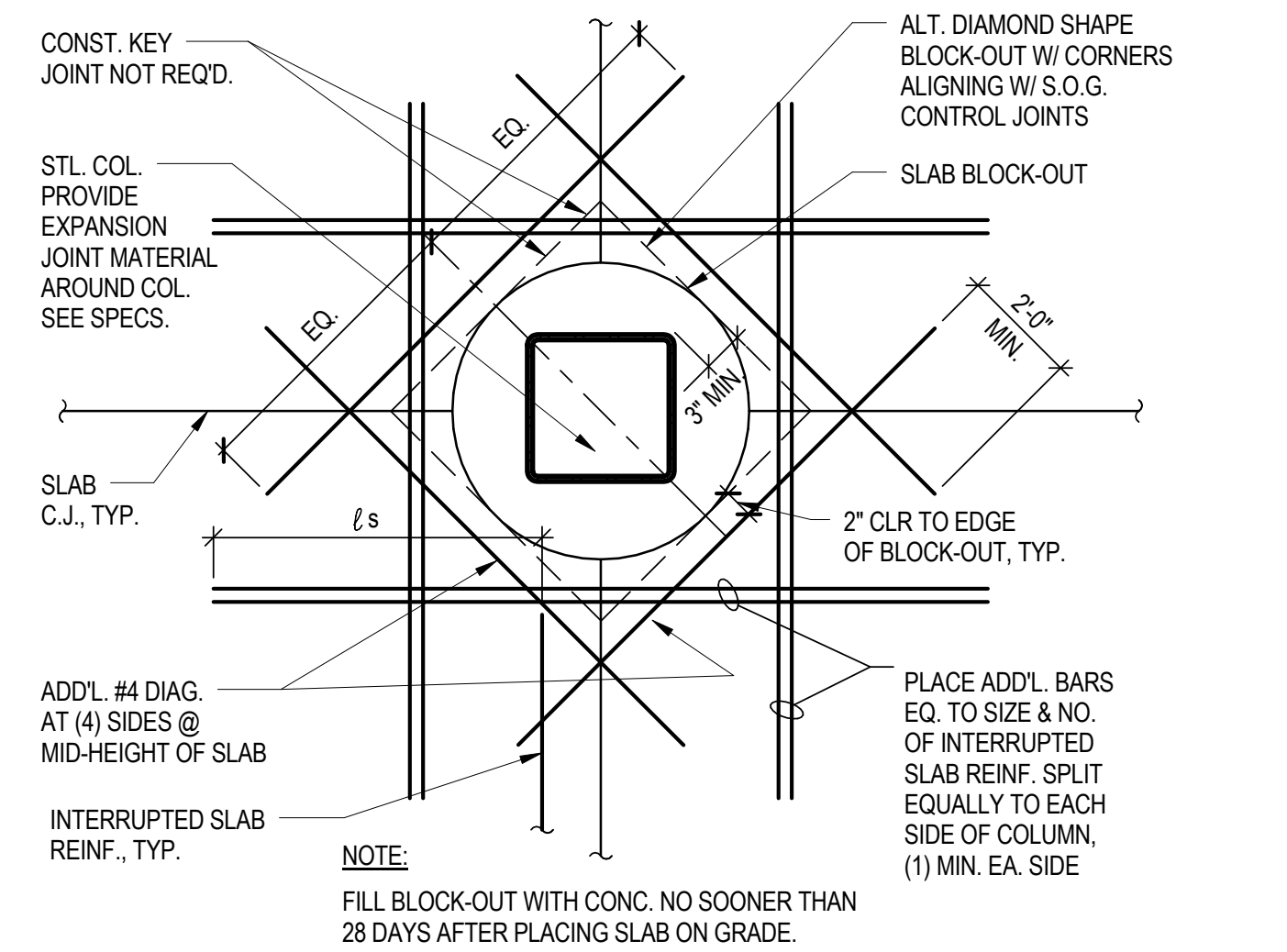


N.T.S

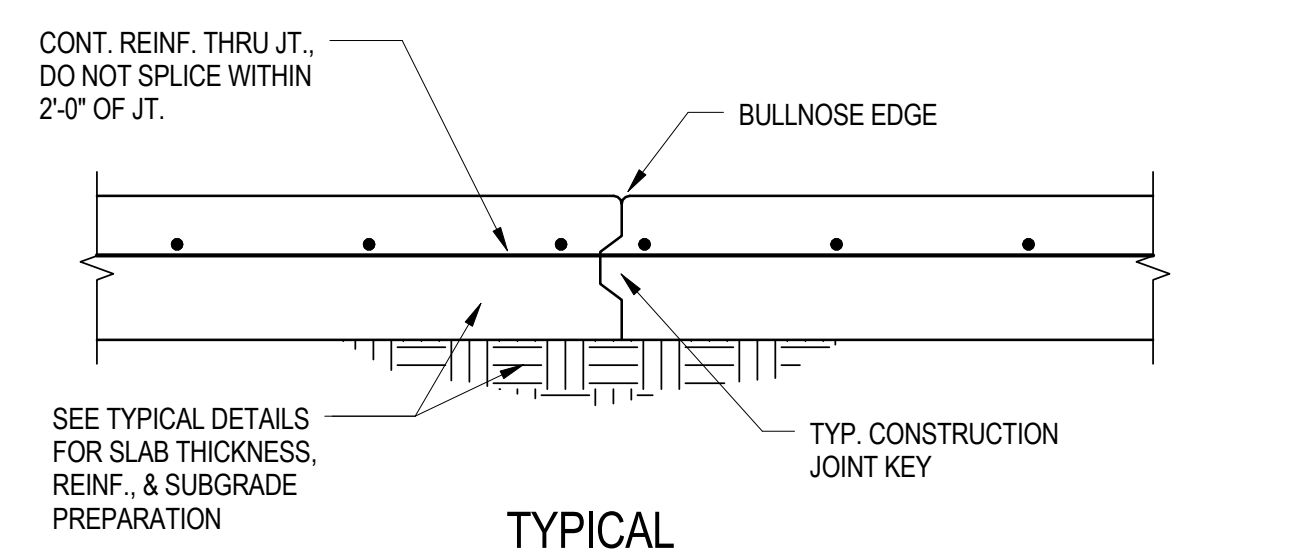


NOTE:
COORDINATE LOCATION, DEPTH, EXTENT, AND EDGE CONDITIONS
OF DEPRESSIONS WITH ARCHITECTURAL DRAWINGS.

N.T.S.



N.T.S.



N.T.S.

BID SUBMISSION
NOVEMBER 27, 2013

CONSULTANTS:

POLYTECH ASSOCIATES INC.
235 Pine Street, 17th Floor
San Francisco, CA 94104
TEL (415) 397-3117
FAX (415) 397-1517

Drawing Title	TYPICAL CONCRETE DETAILS
---------------	--------------------------

Approved: Project Director

Project Title	MPD - EMERGENCY SERVICE ANNEX POLICE STATION
---------------	---

Location	795 WILLOW ROAD, MENLO PARK, CA
----------	---------------------------------

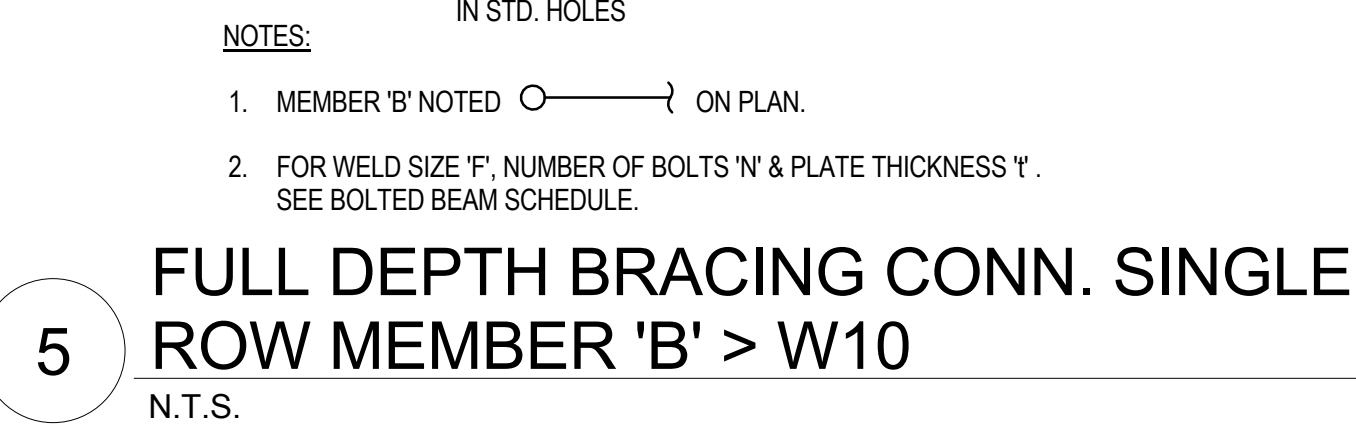
Project Number 640-382

Drawing Number
S1402

Dwa. of

Office of
Construction
and Facilities
Management





NOTES:

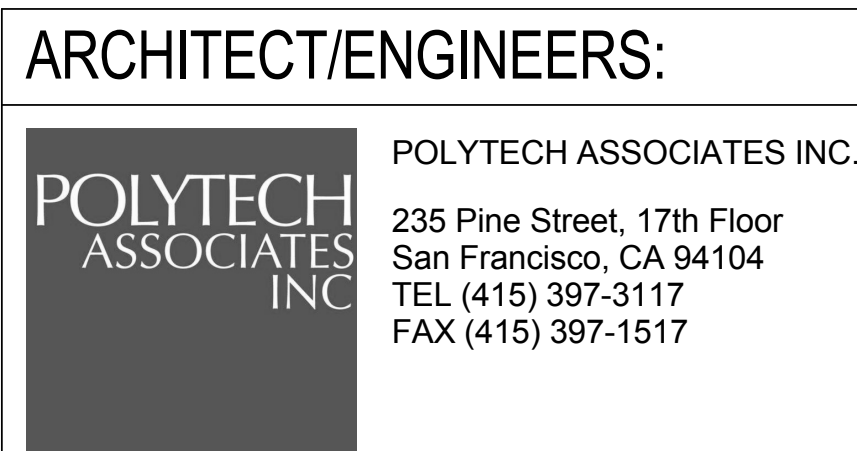
1. BOLT HOLES TO BE STD. HOLES 1/16" GREATER THAN BOLT DIAMETER. SHORT SLOTTED HOLES IN SHEAR PLATE MAY BE USED ANYWHERE NOTED.
2. BOLTS TO BE FULLY PRETENSIONED W/ HARDENED WASHERS, U.O.N.
3. SCHEDULE BASED ON NOMINAL DEPTH OF WIDE FLANGE BEAMS, CHANNELS, TUBES, & OTHER MISCELLANEOUS SHAPES.



CONSULTANTS:

 **Degenkolb**

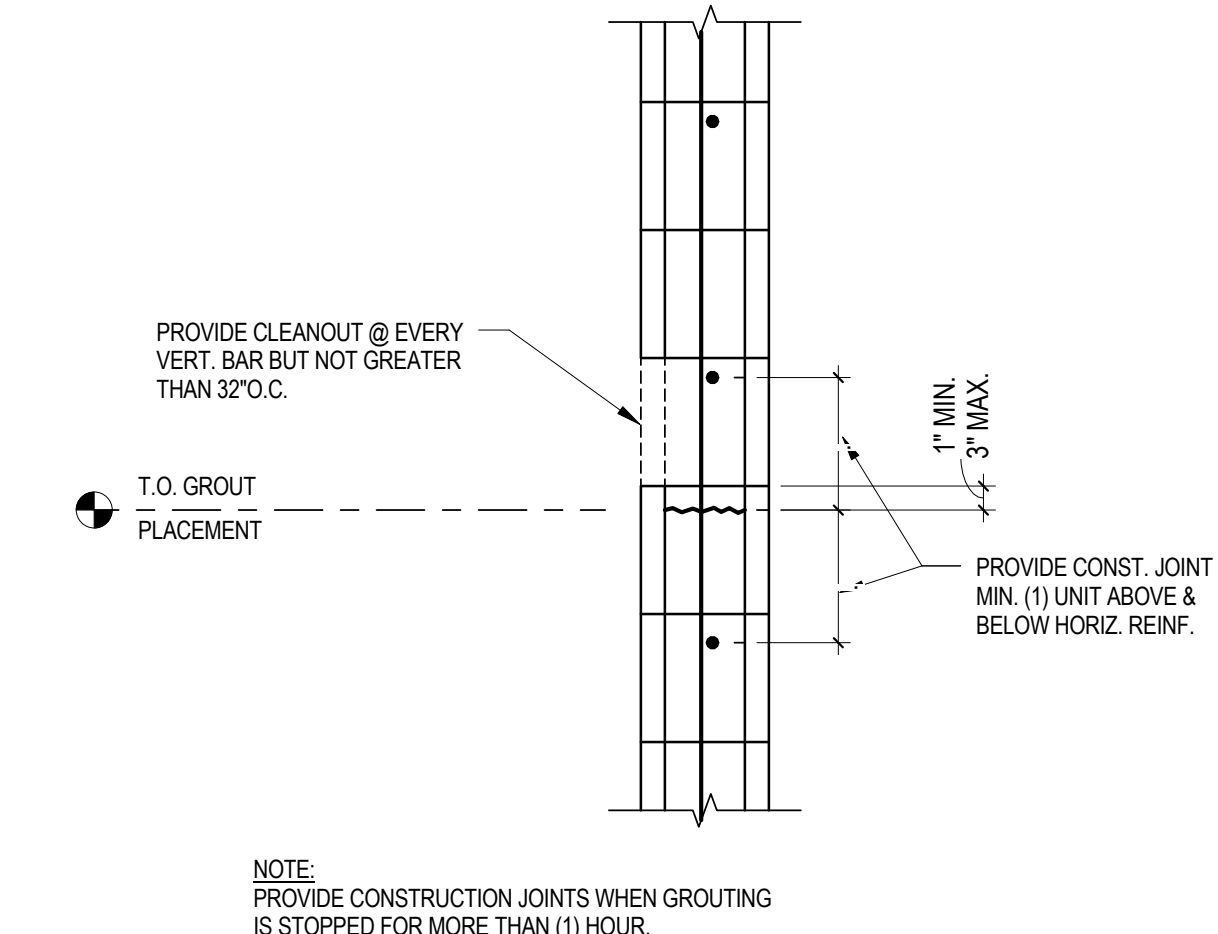
DEGENKOLB ENGINEERS
235 Montgomery Street, Suite 500
San Francisco, CA 94104
415.392.6952 Phone
415.981.3157 Fax
www.degenkolb.com
Project No. B2535008.00



Project Title MPD - EMERGENCY SERVICE ANNEX POLICE STATION			Project Number 640-382	
Location 795 WILLOW ROAD, MENLO PARK, CA			Building Number 410	
Date OCTOBER 8, 2013		Checked RMG	Drawing Number S1501	
		Drawn KLM/MAM	Dwg. of	

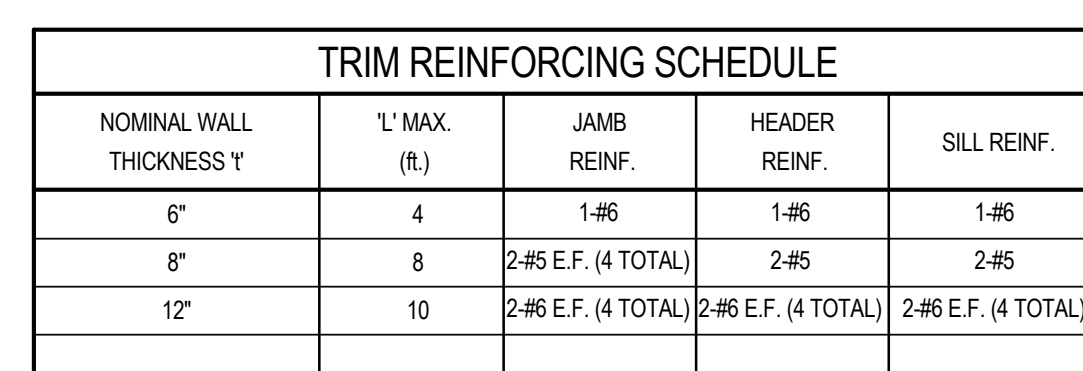
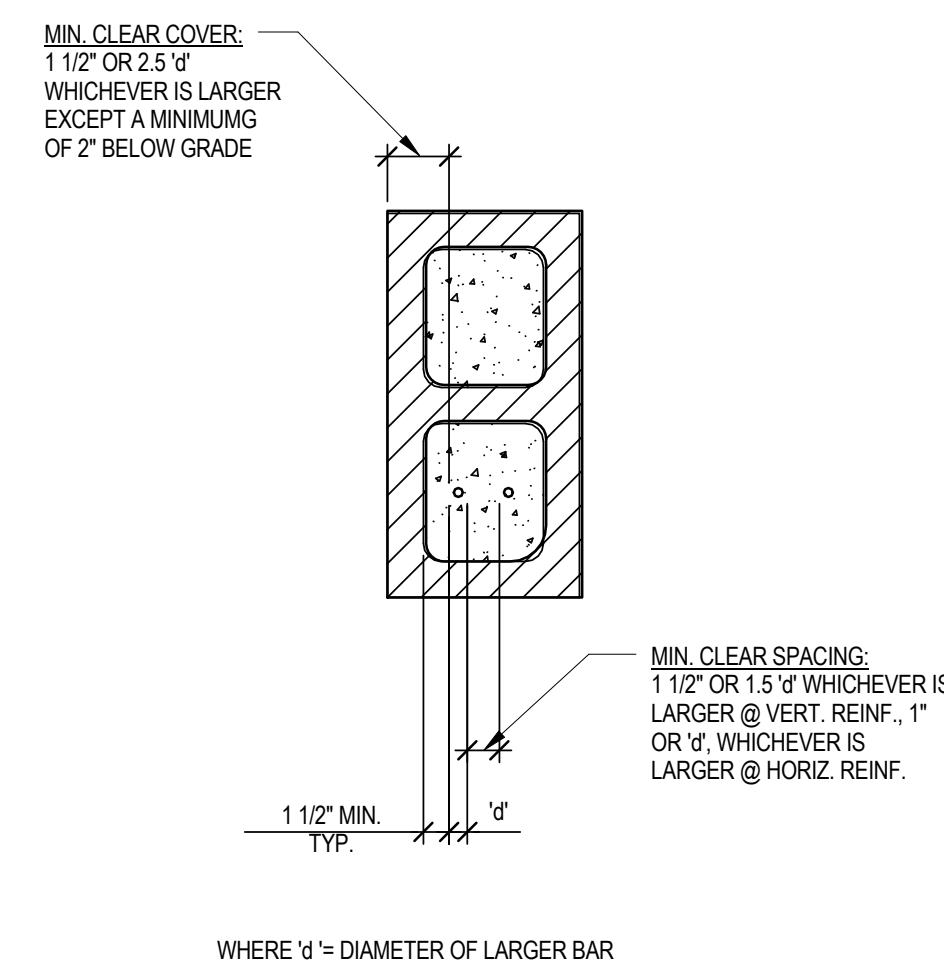
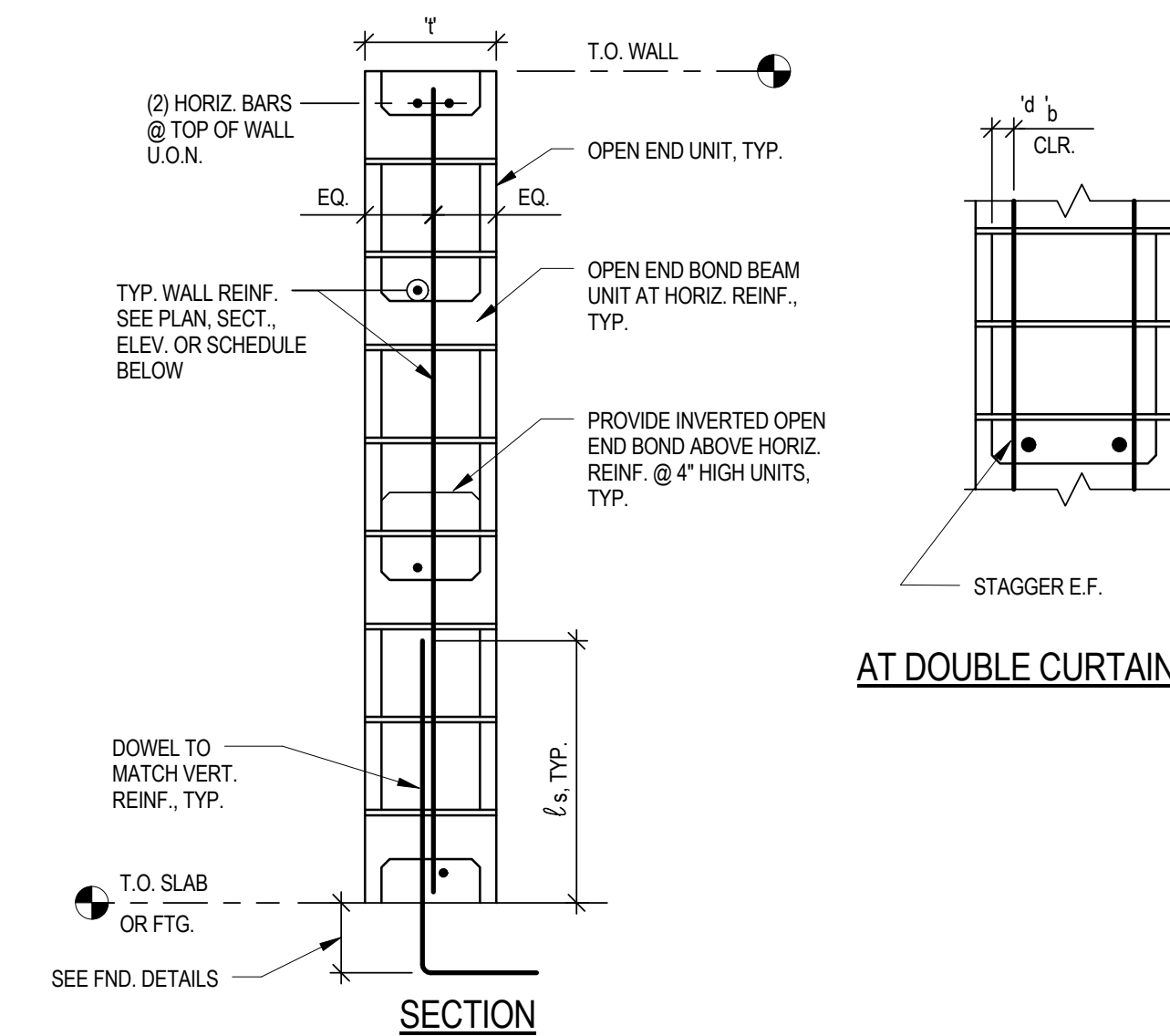
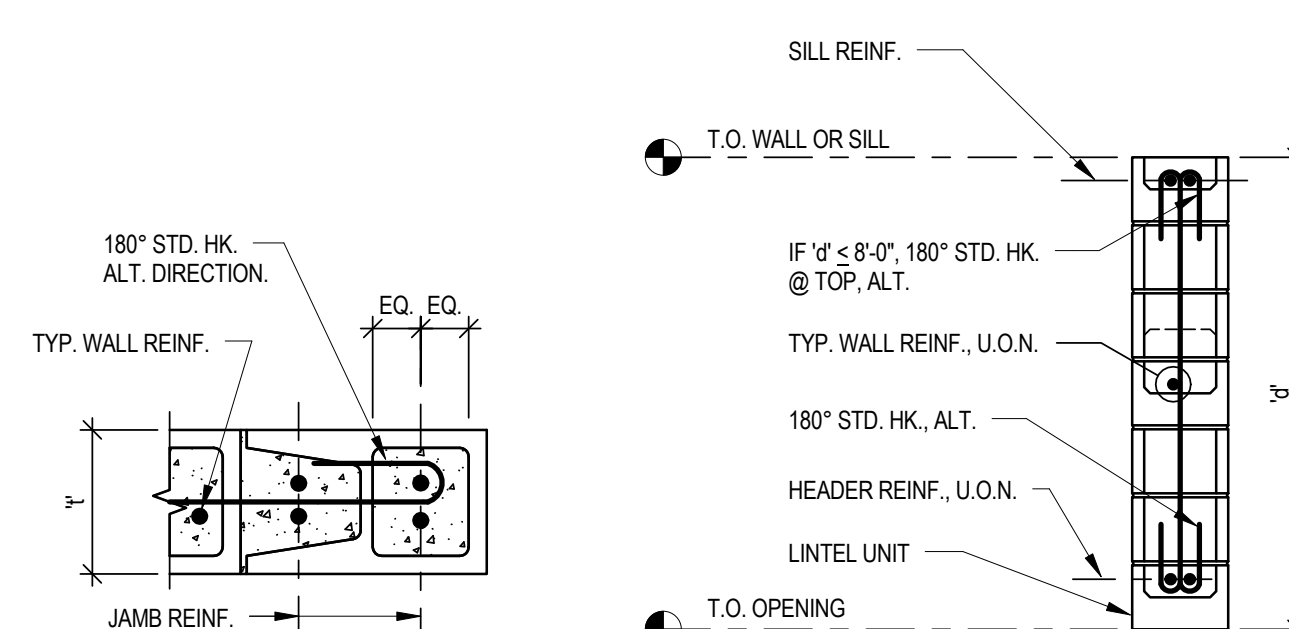
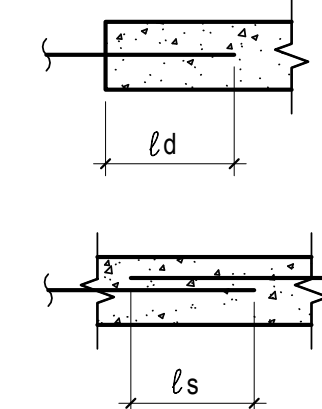
 Department of
Veterans Affairs



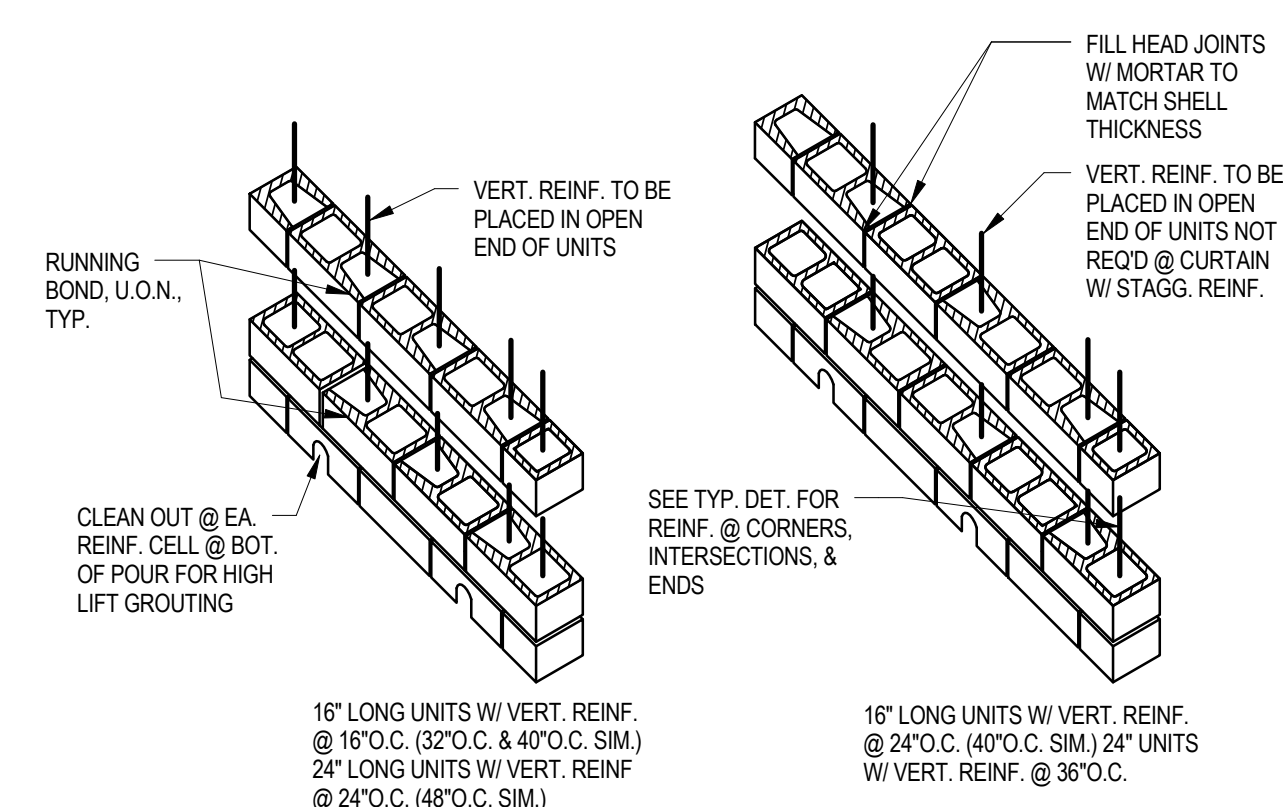


NOTES:

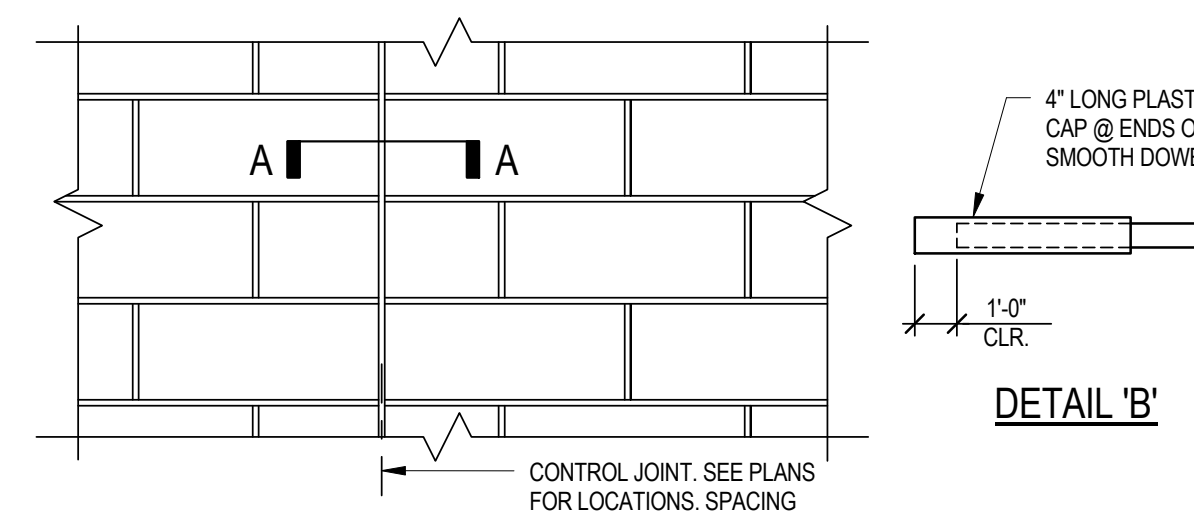
1. ℓ_d = DEVELOPMENT LENGTH
2. ℓ_s = LAP SPlice LENGTH



- NOTES:
1. SCHED. REINF. NOT REQ'D. FOR OPNGS. SMALLER THAN 16" SQ.
 2. MINIMUM TRIM REINF. TO BE LARGER OF TYP. WALL REINF. OR SIZE SHOWN IN SCHEDULE.
 3. AT SERIES OF OPNGS WHERE PIER OR SPANDREL IS NARROWER THAN 120d, RUN TRIM REINF. CONTINUOUS.

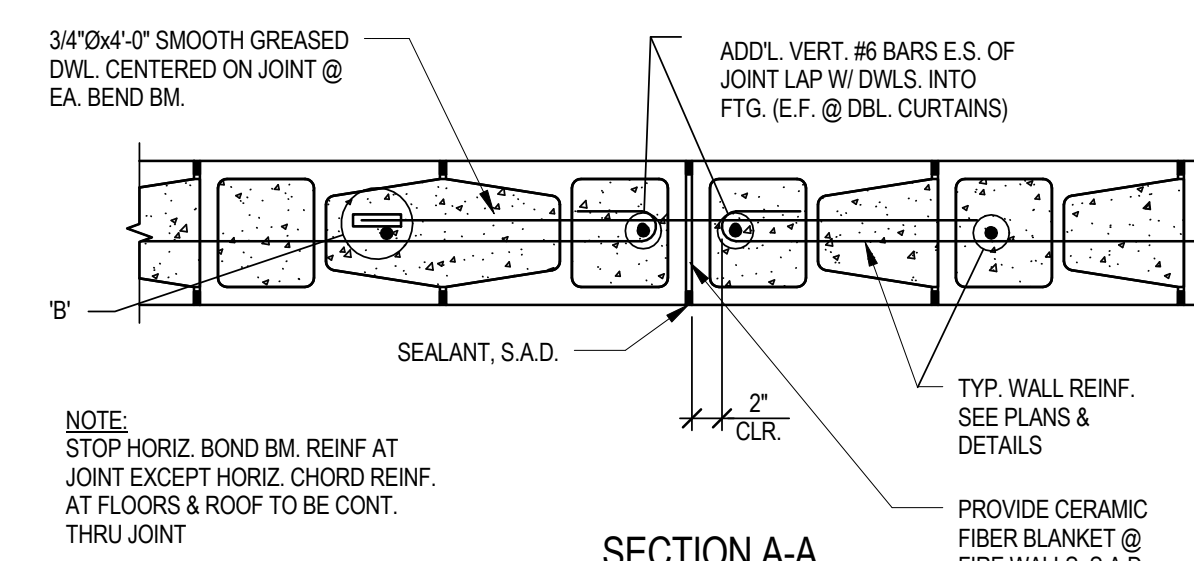


ISOMETRIC (DBL. CURTAIN SIM.)

ELEVATION

NOTES:

1. ALL CELLS TO BE FULLY GROUTED.
2. SECURE REINF. AT 200 ϕ MAX.
3. CONCAVE JOINTS TYP. II Q N.



SECTION A-A

4 CONTROL JOINT
N.T.S.

BID SUBMISSION
NOVEMBER 27, 2013

[illegible]

DEGENKOLB ENGINEERS
235 Montgomery Street, Suite 500
San Francisco, CA 94104
415.392.6952 *Phone*
415.981.3157 *Fax*
www.degenkolb.com
Project No. B2535008.00



POLYTECH
ASSOCIATES
INC.

POLYTECH ASSOCIATES INC.
235 Pine Street, 17th Floor
San Francisco, CA 94104
TEL (415) 397-3117
FAX (415) 397-1517

Drawing Title	TYPICAL CMU DETAILS
---------------	---------------------

Approved: Project Director

Project Title	MPD - EMERGENCY SERVICE ANNEX POLICE STATION
---------------	---

Location	795 WILLOW ROAD, MENLO PARK, CA
----------	---------------------------------

Date OCTOBER 8, 2013	Checked RMG	Dra K
-------------------------	----------------	----------

Project Number	640-382
----------------	---------

Building Number
410Drawing Number
017

S17

Office of
Construction
and Facilities
Management

