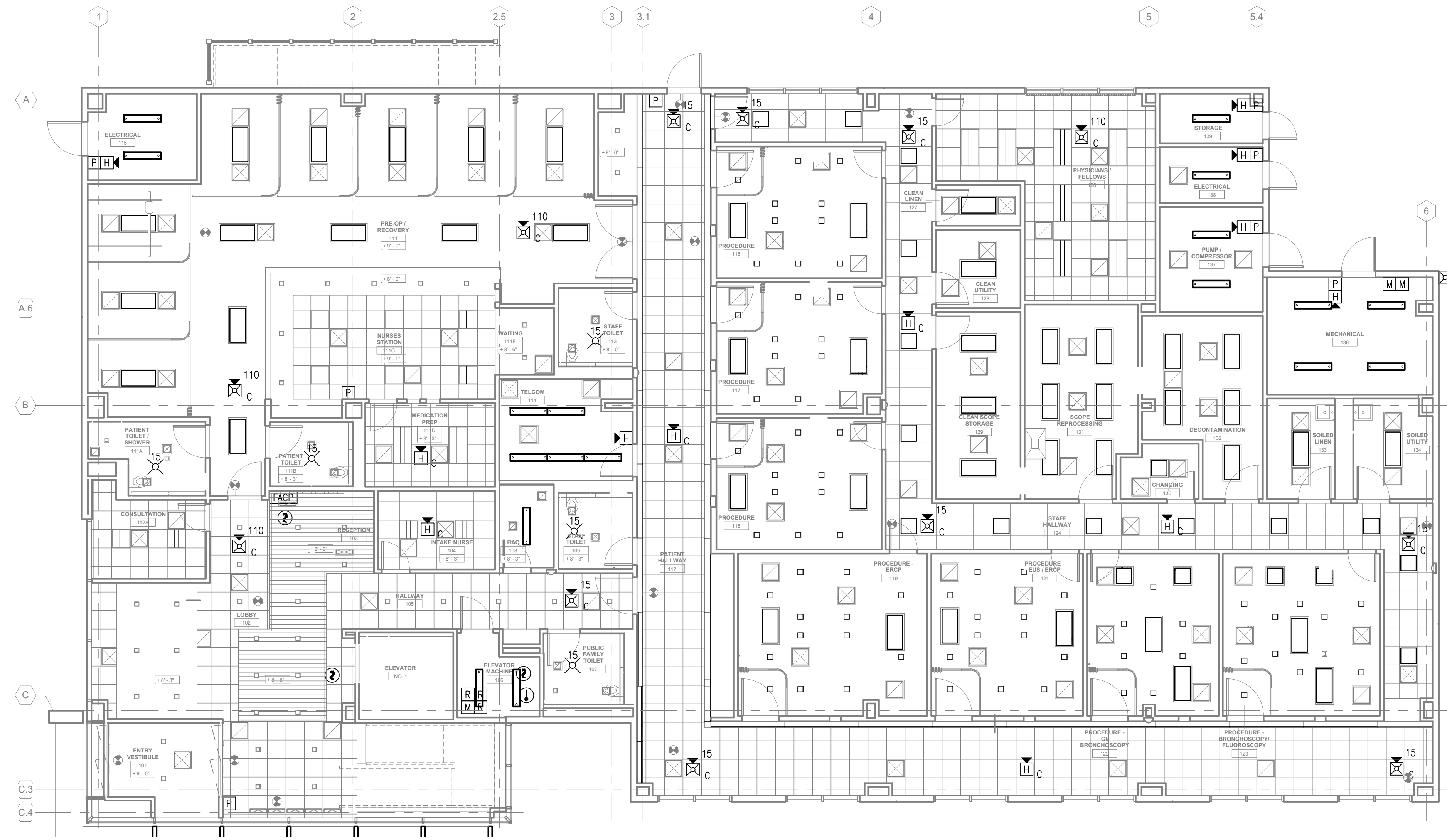


three inches = one foot
one and one half inches = one foot
one inch = one foot
three quarters inch = one foot
one half inch = one foot
three eighths inch = one foot
one quarter inch = one foot
one eighth inch = one foot



SECOND FLOOR FIRE ALARM SYSTEM LAYOUT

1/8" = 1'-0"



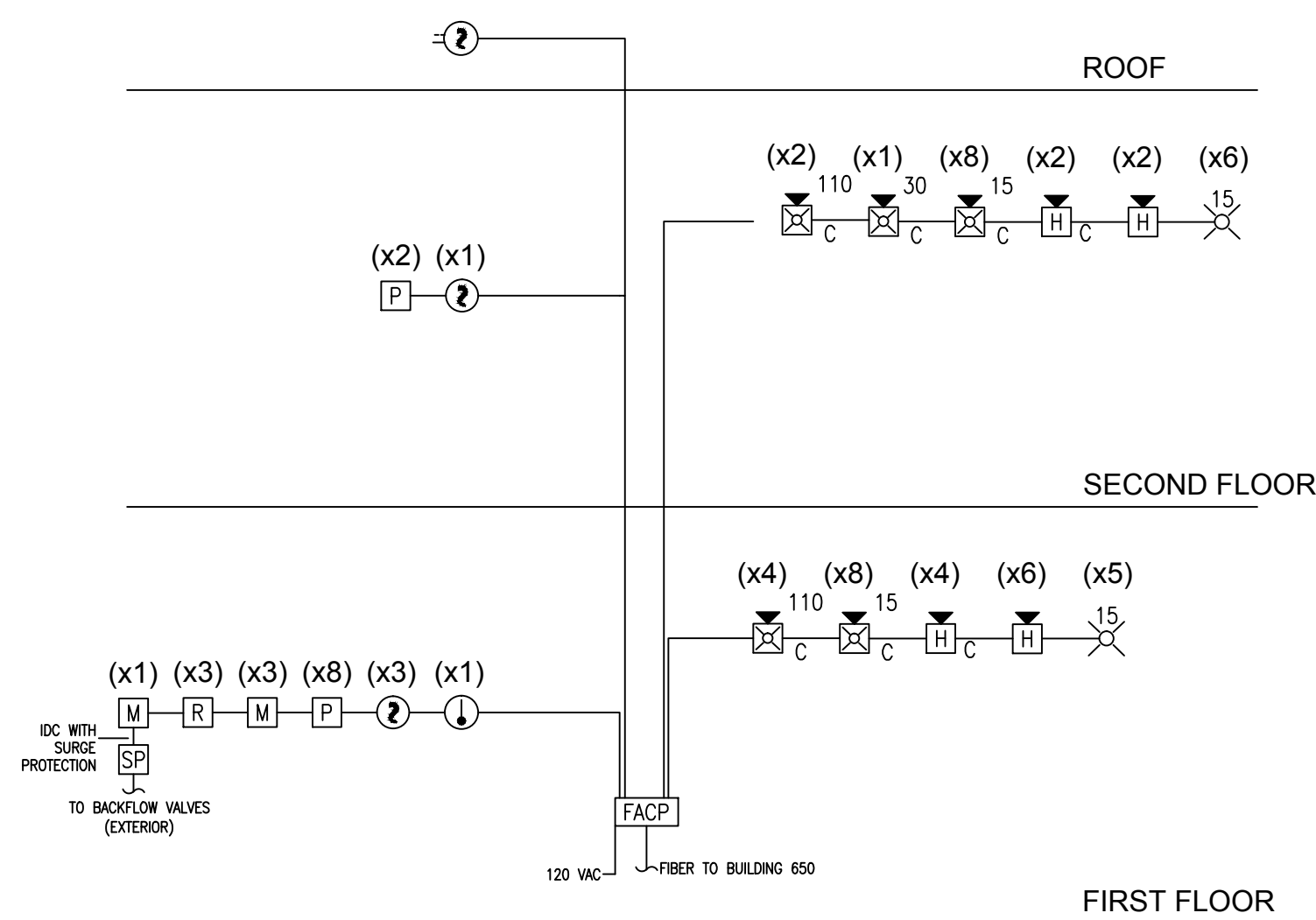
FIRST FLOOR FIRE ALARM SYSTEM LAYOUT

1/8" = 1'-0"

OPERATIONAL MATRIX:

System Inputs	System Outputs													
	Activate General Alarm Audible Sounder	Activate General Alarm Visual Indicator	Activate Supervisory Alarm Audible Sounder	Activate Supervisory Alarm Visual Indicator	Activate Trouble Alarm Audible Sounder	Activate Trouble Alarm Visual Indicator	Activate Exterior Alarm Visual Indicator	Activate all Interior Horns/Strobes	Transmit General Fire Alarm Signal	Shut Down Air Handling Unit	Transmit Supervisory Signal To Supervising Station	Transmit Trouble Signal To Supervising Station	Recall Elevator to First Floor	Shunt Elevator Power/Activate Flooding Hot
1 Manual Pull Stations	X	X					X	X						
2 Smoke Detectors	X	X			X	X	X							
3 Elevator Lobby Smoke Detector 1st	X	X					X	X			X			
4 Elevator Lobby Smoke Detector 2nd	X	X					X	X				X		
5 Elevator Machine Rm Smoke Detector	X	X					X	X			X			
6 Elevator Machine Rm Heat Detector	X	X					X	X					X	
7 Duct Smoke Detector			X	X					X	X				
8 Waterflow Switch	X	X					X	X						
9 Valve Supervisory Switch			X	X					X					
10 Ground Fault				X	X						X			
11 Open Circuit				X	X						X			
12 Notification Appliance Short Circuit				X	X						X			
13 Low Battery				X	X						X			
14 AC Power Failure				X	X						X			

SCHEMATIC RISER DIAGRAM:



FIRE ALARM SYSTEM LEGEND	
FACP	FIRE ALARM CONTROL PANEL
②	SMOKE DETECTOR
①	HEAT DETECTOR
②-	DUCT SMOKE DETECTOR
P	PULL STATION
R	ADDRESSABLE RELAY MODULE
M	ADDRESSABLE MONITOR MODULE
XX	VISUAL NOTIFICATION APPLIANCE
XX	XX - INDICATES CANDELA
XX	HORN/VISUAL NOTIFICATION APPLIANCE
XX	XX - INDICATES CANDELA
H	HORN ONLY NOTIFICATION APPLIANCE

FIRE ALARM SYSTEM NOTES:

1. THE FIRE ALARM SYSTEM DESIGN, ENGINEERING AND INSTALLATION AS INDICATED ON THIS PLAN SHALL COMPLY WITH NFPA 72, NFPA 101, VA FIRE PROTECTION DESIGN MANUAL (SIXTH EDITION) AND OTHER APPLICABLE CODES AND STANDARDS AS REQUIRED BY THE AUTHORITY HAVING JURISDICTION (AHJ).
2. PROVIDE A NEW FIRE ALARM SYSTEM AS SHOWN ON THE DRAWINGS AND REQUIRED BY THE PROJECT SPECIFICATIONS. THE FIRE ALARM SYSTEM SHALL BE CONNECTED TO THE EXISTING CAMPUS NETWORK VIA FIBER TO COSS BUILDING.
3. CONTRACTOR IS RESPONSIBLE FOR REVIEWING ALL SPECIFICATIONS AND DRAWINGS ASSOCIATED WITH THIS PROJECT.
4. ALL MATERIALS AND DEVICES USED IN THIS PROJECT SHALL BE UL LISTED AND/OR FM APPROVED FOR USE IN FIRE ALARM SYSTEMS.
5. ALL ALARM CONDUIT AND WIRING PENETRATIONS THROUGH FIRE RATED ASSEMBLIES SHALL BE SEALED WITH A UL APPROVED THROUGH PENETRATION FIRE STOP ASSEMBLY.

CONSULTANTS: 8967 W. Radcliffe Dr. Littleton, CO 80123 Office: 720.981.3413 www.firetechconsulting.com "Veteran Owned Small Business"	KEY PLAN April 22, 2014	ARCHITECT/ENGINEERS: 239 9TH STREET, SUITE 201 SAN FRANCISCO, CA 94103 T (415) 682-7239 F (415) 682-7338 www.meiarchitects.com	Drawing Title FIRST AND SECOND FLOOR FIRE ALARM SYSTEM PLAN Approved: Project Director	Project Title CONSOLIDATE / EXPAND MEDICAL PROCEDURES MINOR (CEMP) Location VANCHCS - MATHER, CA Date APRIL 22, 2014 Checked RDL Drawn JAM	Project Number 612-111 Building Number Drawing Number FA1-0 Dwg. -- of --	Office of Facilities Management Department of Veterans Affairs
---	---------------------------------------	---	---	--	--	---



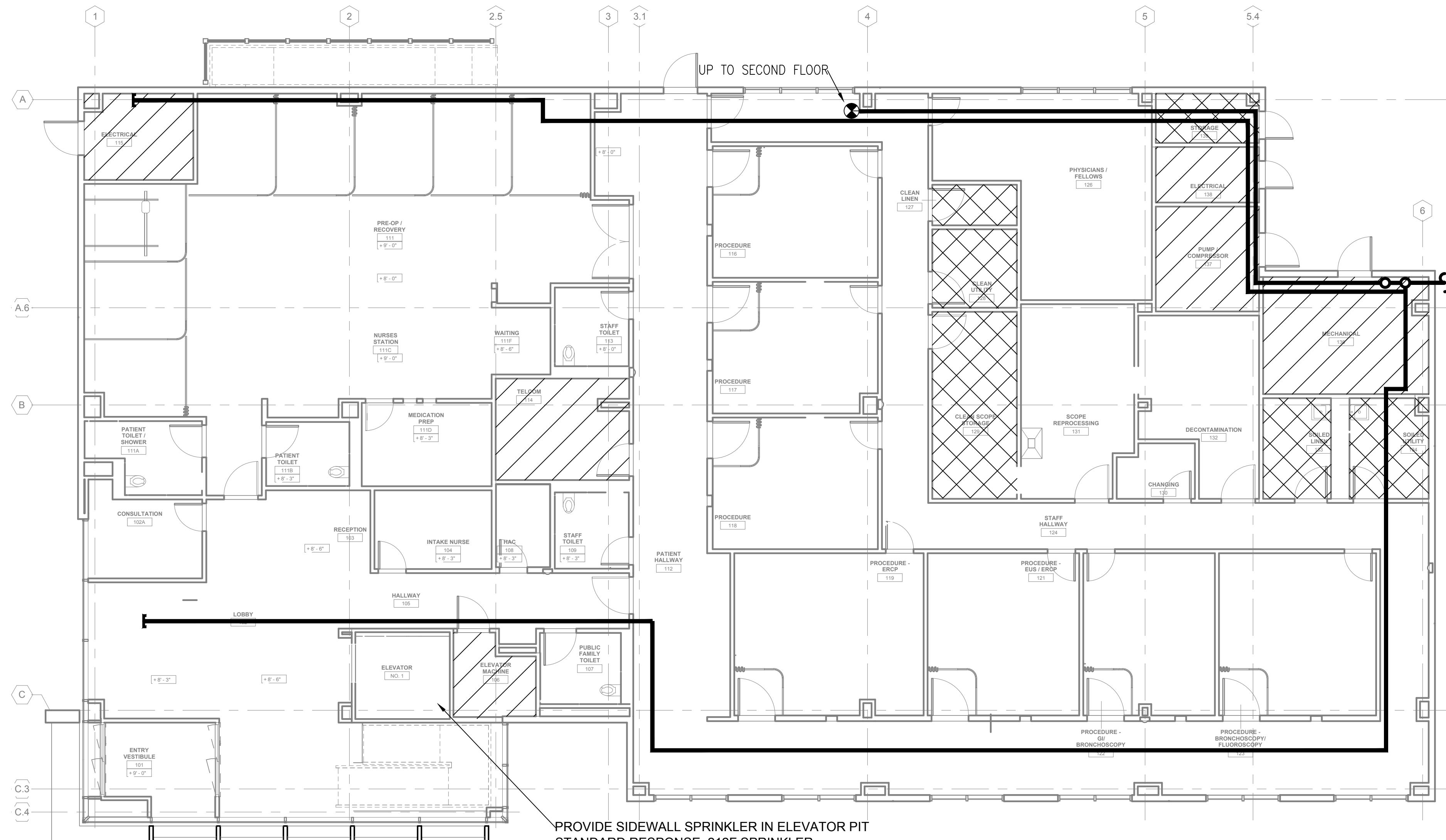
FULLY SPRINKLERED 100% CONSTRUCTION DOCUMENTS

three inches = one foot
one and one half inches = one foot
one inch = one foot
three quarters inch = one foot
one half inch = one foot
three eighths inch = one foot
one quarter inch = one foot
one eighth inch = one foot



SECOND FLOOR SPRINKLER PLAN

1/8" = 1'-0"



FIRST FLOOR SPRINKLER PLAN

1/8" = 1'-0"

SPRINKLER SYSTEM DESIGN DATA							
SPACE	SYSTEM TYPE	OCCUPANCY TYPE	HATCH PATTERN	DESIGN DENSITY GPM/SF	DESIGN AREA (SEE NOTE 2) SF	HOSE STREAM GPM	SPRINKLER HEAD TYPE (NOTE 1)
ALL OTHER AREAS	WET	LIGHT HAZARD	(NO HATCH)	0.10	1,500	250	QUICK RESPONSE, K-5.6 OR 8.0 155 F OR 200F
ELEV MACHINE RM 106 TELECOM 114 ELEC RM 115 ELEC RM 138 PUMP/COMP 137 MECH 136 ELEC RM 211 TELECOM 221	WET	ORDINARY HAZARD GROUP 1		0.15	1,500	250	QUICK RESPONSE, K-5.6 OR 8.0 155 F OR 200F
SOILED UTILITY 134 SOILED LINEN 133 CLEAN UTILITY 128 CLEAN LINEN 127 STORAGE 139	WET	ORDINARY HAZARD GROUP 2		0.20	1,500	250	QUICK RESPONSE, K-5.6 OR 8.0 155 F OR 200F

NOTES: 1. PENDENT OR SIDEWALL HEADS TO BE USED UNDER ALL SUSPENDED CEILINGS.
2. REFER TO AUTOMATIC SPRINKLER SYSTEM NOTE 3

WATER SUPPLY TEST:

DATE OF TEST: FEBRUARY 4, 2013
TIME OF TEST: 11:40
FLOW HYDRANT: #12 SW OF BLDG 650
PRESSURE HYDRANT: #14 W OF COSS BLDG
STATIC PRESSURE: 88 PSI
RESIDUE PRESSURE: 34 PSI
PITOT PRESSURE: 25 PSI
2-1/2" HYD DIFFUSER
840 GALLONS

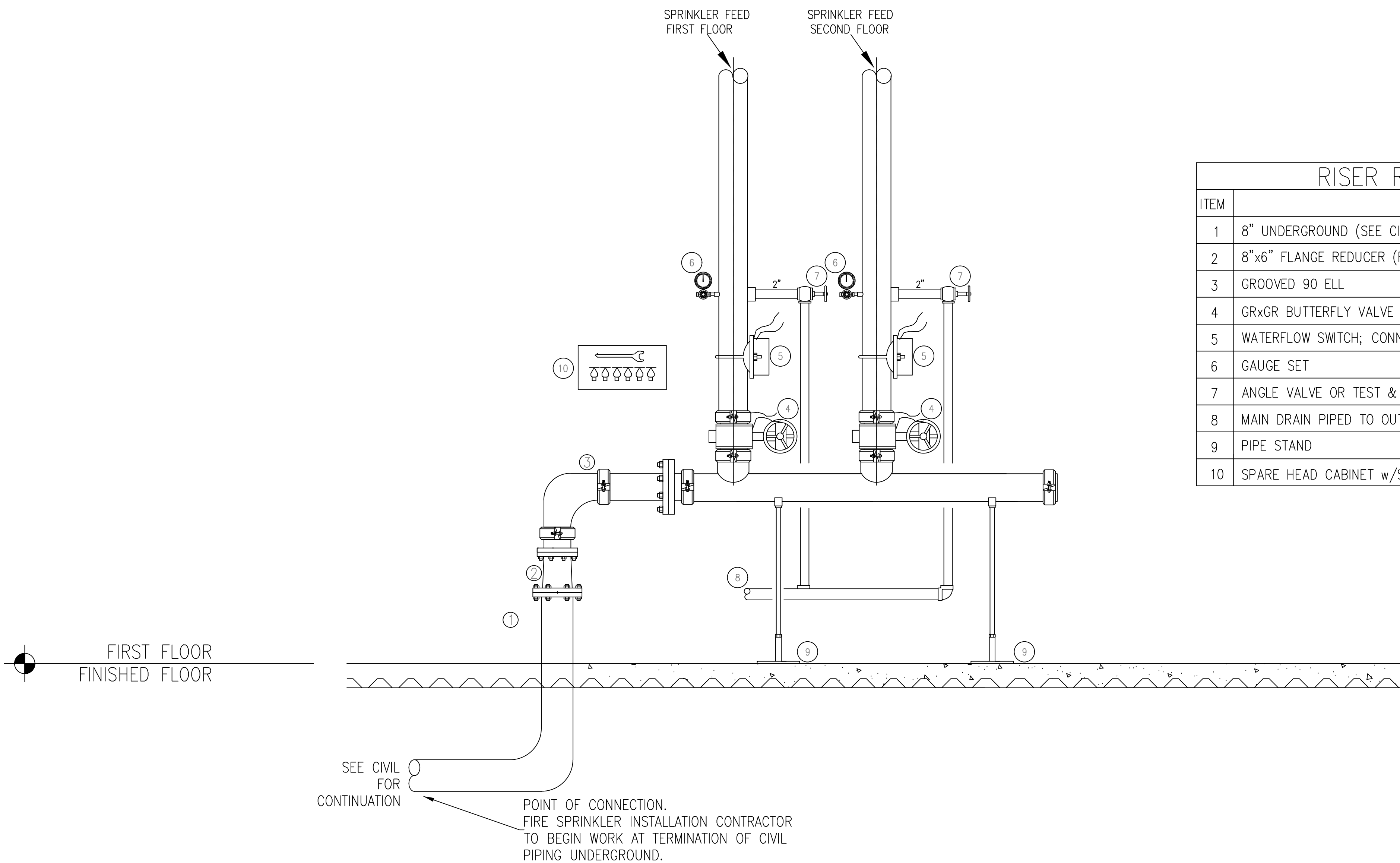
AUTOMATIC SPRINKLER SYSTEM NOTES:

1. AUTOMATIC FIRE SPRINKLER SYSTEM DESIGN, ENGINEERING AND INSTALLATION AS INDICATED ON THIS PLAN SHALL COMPLY WITH NFPA 13, NFPA 101, VA FIRE PROTECTION DESIGN MANUAL (SIXTH EDITION) AND OTHER APPLICABLE CODES AND STANDARDS AS REQUIRED BY THE AUTHORITY HAVING JURISDICTION (AHJ).
2. CONTRACTOR TO PROVIDE A NEW WET, AUTOMATIC SPRINKLER SYSTEM FOR ALL AREAS IN THIS BUILDING.
3. REDUCTION IN DESIGN AREA ALLOWED PER NFPA 13. A 250 GPM HOSE ALLOWANCE SHALL BE INCORPORATED INTO THE DESIGN.
4. CONTRACTOR IS RESPONSIBLE FOR REVIEWING ALL SPECIFICATIONS AND DRAWINGS ASSOCIATED WITH THIS PROJECT.
5. ALL MATERIALS AND DEVICES USED IN THIS PROJECT SHALL BE UL LISTED AND/OR FM APPROVED FOR USE IN AUTOMATIC SPRINKLER SYSTEMS.
6. ALL SPRINKLER PIPING PENETRATIONS THROUGH FIRE RATED ASSEMBLIES SHALL BE SEALED WITH A UL APPROVED THROUGH PENETRATION FIRE STOP ASSEMBLY.
7. ALL AUTOMATIC SPRINKLER PIPING INSTALLED UNDER THIS CONTRACT SHALL BE HYDROSTATICALLY TESTED IN ACCORDANCE WITH NFPA 13 AND OTHER APPLICABLE NFPA STANDARDS, STATE AND LOCAL CODES.
8. SPRINKLER PIPE HANGERS SHALL BE UL APPROVED. THE SPRINKLER INSTALLATION CONTRACTOR SHALL PROVIDE PIPE HANGERS AS REQUIRED BY NFPA 13.
9. COORDINATE LOCATIONS OF SPRINKLER MAINS WITH ALL MECHANICAL AND ELECTRICAL EQUIPMENT.
10. UNDERGROUND FIRE SPRINKLER PIPING TO BE INSTALLED BY CIVIL WITHIN 5 FEET OF BUILDING.

CONSULTANTS: 8967 W. Radcliffe Dr. Littleton, CO 80123 Office: 720.981.3413 www.firetechconsulting.com "Veteran Owned Small Business"	KEY PLAN April 22, 2014	ARCHITECT/ENGINEERS: 239 9TH STREET, SUITE 201 SAN FRANCISCO, CA 94103 T (415) 682-7239 F (415) 682-7339 www.imeichicago.com	Drawing Title FIRST AND SECOND FLOOR SPRINKLER SYSTEM PLAN Approved: Project Director	Project Title CONSOLIDATE / EXPAND MEDICAL PROCEDURES MINOR (CEMP) Location VANCHCS - MATHER, CA Date APRIL 22, 2014 Checked RDL Drawn JAM	Project Number 612-111 Building Number Drawing Number FP1-0 Dwg. -- of --	Office of Facilities Management
---	---------------------------------------	---	--	--	---	--

three inches = one foot
one and one half inches = one foot
one inch = one foot
three quarters inch = one foot
one half inch = one foot
three eighths inch = one foot
one quarter inch = one foot
one eighth inch = one foot

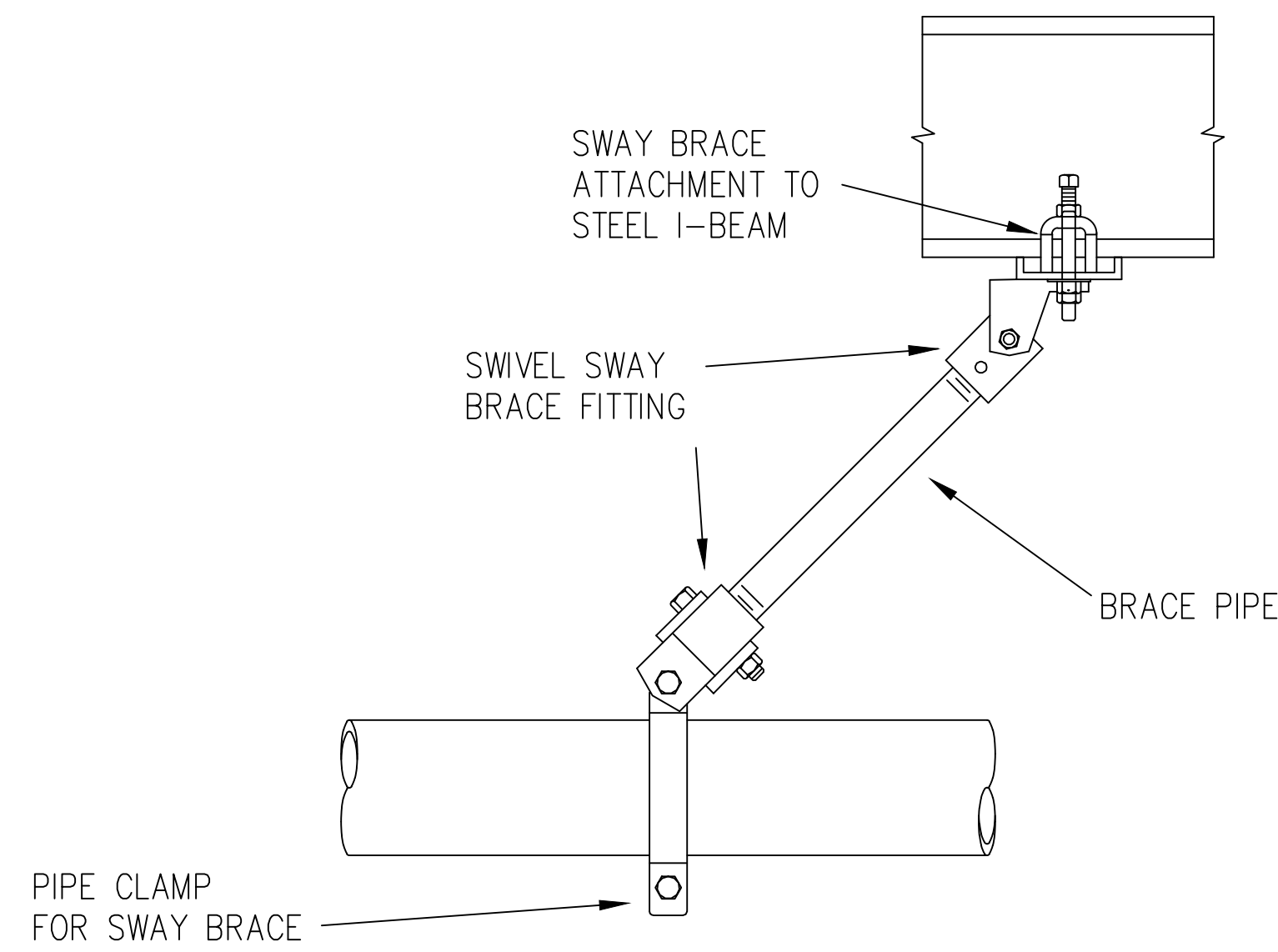
1 2 3 4 5 6 7 8 9



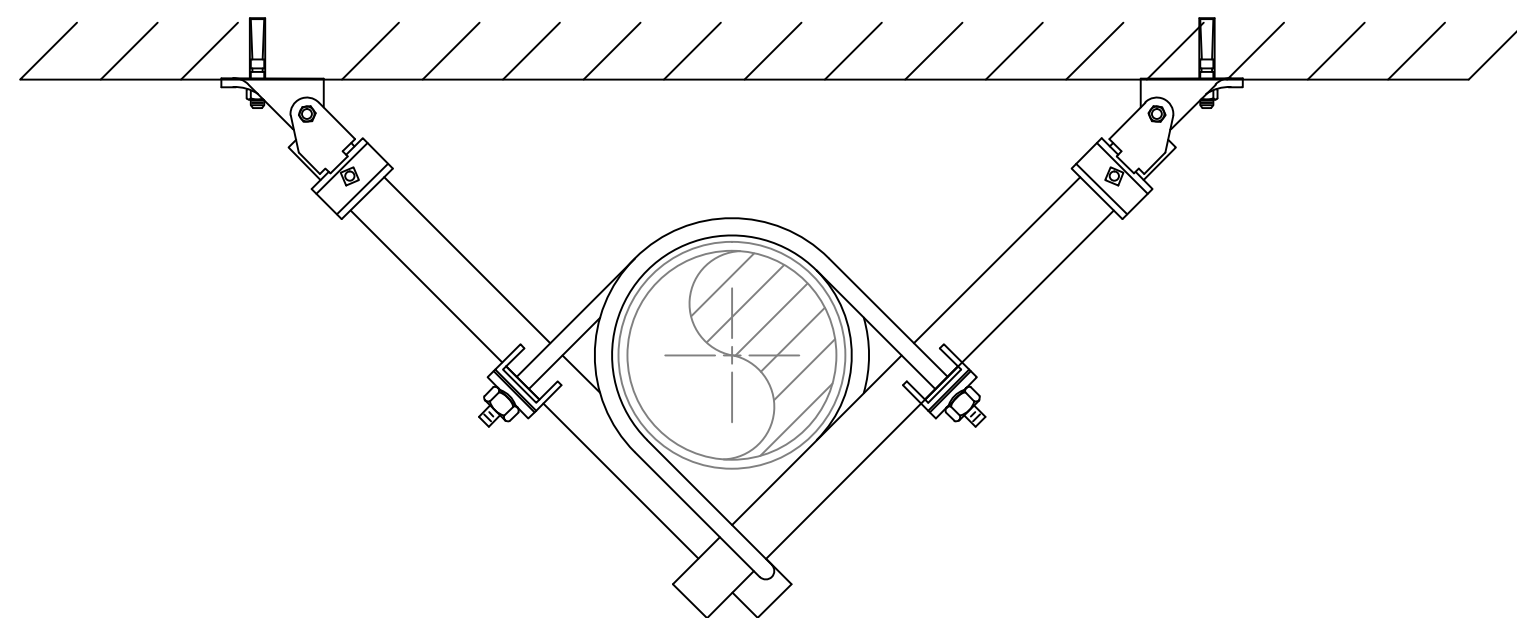
RISER ROOM DETAIL LEGEND		
ITEM	DESCRIPTION	QTY
1	8" UNDERGROUND (SEE CIVIL)	1
2	8"x6" FLANGE REDUCER (FINAL SIZE TO BE DETERMINE BY CONTRACTOR)	1
3	GROOVED 90 ELL	1
4	GRxGR BUTTERFLY VALVE w/TAMPER; CONNECT TO FIRE ALARM SYSTEM	2
5	WATERFLOW SWITCH; CONNECT TO FIRE ALARM SYSTEM	2
6	GAUGE SET	2
7	ANGLE VALVE OR TEST & DRAIN VALVE	2
8	MAIN DRAIN PIPED TO OUTSIDE OF BUILDING	1
9	PIPE STAND	2
10	SPARE HEAD CABINET w/SPARE HEADS & WRENCHES	1

SPRINKLER RISER ROOM DETAIL

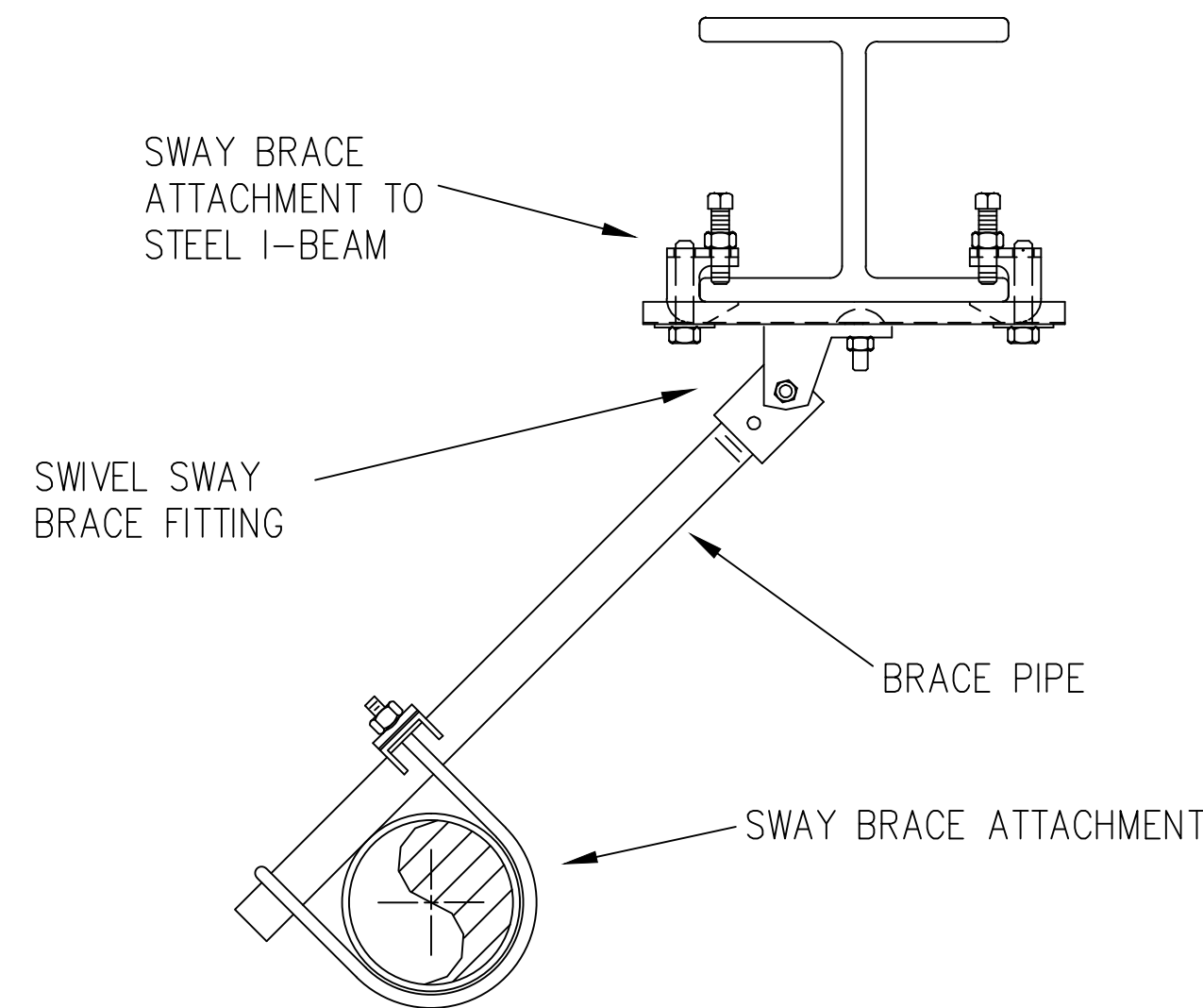
NTS



1 SWAY BRACE ATTACHMENT TO STEEL I-BEAM
LONGITUDINAL SEISMIC BRACE






2 FAST CLAMP RISER BRACE
FOUR-WAY SWAY BRACE



3 SWAY BRACE ATTACHMENT TO STEEL I-BEAM
LATERAL SEISMIC BRACE

SEISMIC BRACING DETAILS

NTS

CONSULTANTS:		KEY PLAN	ARCHITECT/ENGINEERS:	Drawing Title FIRE ALARM SYSTEM DETAILS	Project Title CONSOLIDATE / EXPAND MEDICAL PROCEDURES MINOR (CEMP)	Project Number 612-111	Office of Facilities Management Department of Veterans Affairs
 8967 W. Radcliffe Dr. Littleton, CO 80123 Office: 720.981.3413 www.firetechconsulting.com "Veteran Owned Small Business"			 239 9TH STREET, SUITE 201 SAN FRANCISCO, CA 94103 T (415) 682-7219 F (415) 682-7239 www.imeiconsultants.com	Approved: Project Director	Location VANCHCS - MATHER, CA	Building Number	
Issues & Revisions:					Date APRIL 22, 2014	Checked RDL	
Date					Drawn JAM	Dwg. -- of --	