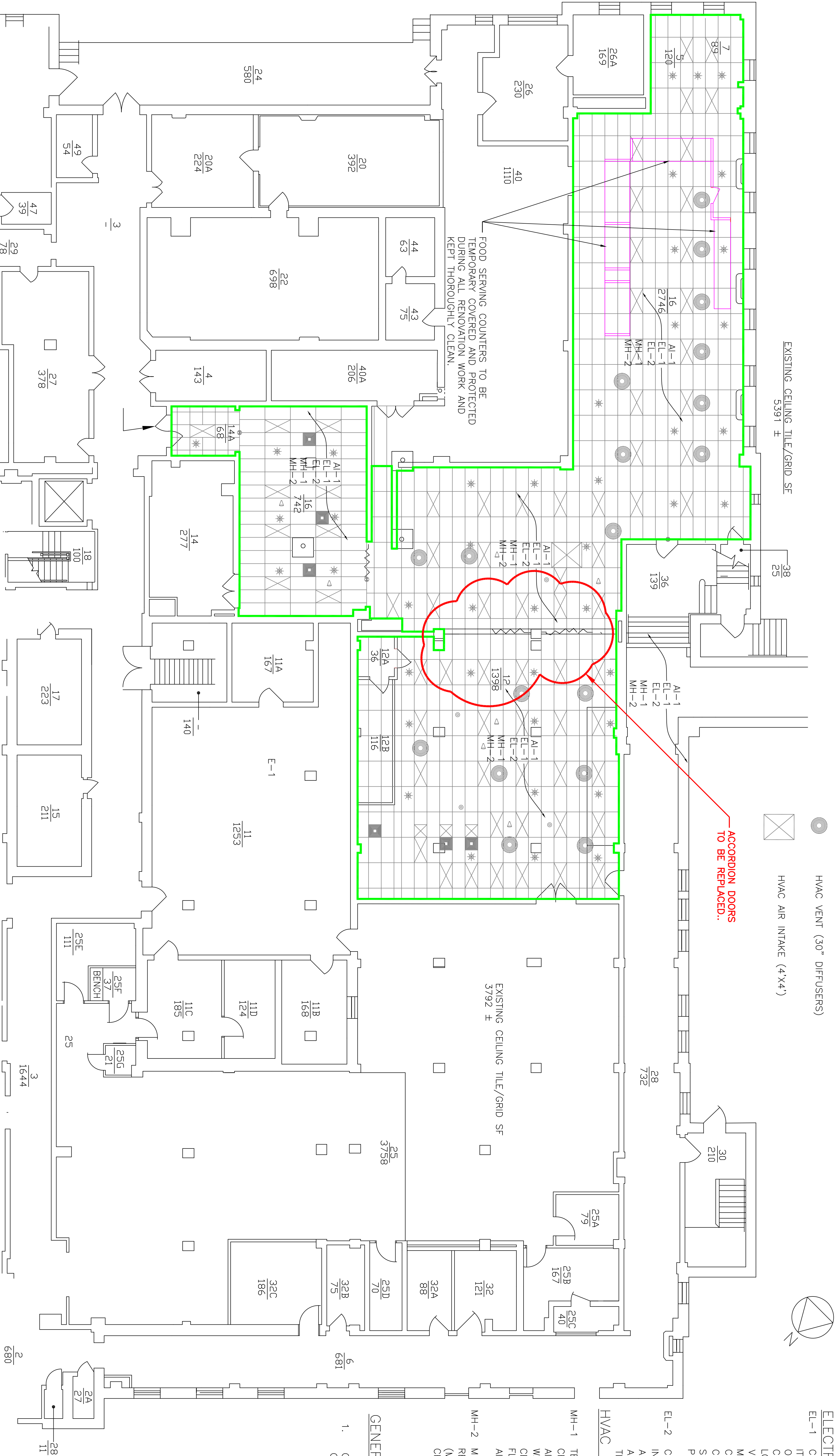




<div><div><div></div><div></div></div><div><div>NO CHANGES TO EXISTING DOORS TO BE REMOVED IN THIS DRAWING</div><div>EXISTING DOORS TO BE REMOVED IN THIS DRAWING</div></div></div>	WBJ	8-26-14
Revisions	WBJ	Date

Approved: Patient Safety Nurse		Approved: Energy Engineer		Approved: Safety Manager		Drawing Title		Project Title		Date	
		Approved: Chief of Police		Approved: Infection Control Officer		BLDG. 4 BSMT. CAFETERIA CEILING GRID/TILE REPLACEMENT		REPLACE FINISHES VARIOUS BUILDINGS		09/19/13	
		Approved: Chief of Mental Health Service		Approved: GEWS Coordinator		Approved: Chief of Staff		Building Number 4		Checked WCU	
						Approved: Associate Director		Approved: Chief of Engineering Svc.		Drawn WBJ	
						Approved: Medical Center Director		Location VA MEDICAL CENTER, SALEM, VA. 24153		DRAWING NO. AF-4 2564 Dwg 5 Of 11	
Veterans Affairs											

BLDG. 4 BSMT (PARTIAL) FLOOR PLAN
SCALE: 1/8"=1'-0"



ACoustical TILE/GRID NOTES:

AL-1 REMOVE THE EXISTING 2'x4' ACOUSTICAL CEILING TILES AND GRID. PROVIDE NEW 2'x4' (WHITE) CEILING TILES AND (WHITE) GRID. GRID WILL HAVE MANUFACTURER APPLIED PAINT FINISH AND CONFORM TO ASTM C635 HEAVY DUTY GRID SYSTEM SPECS. USE THE SAME CONSTRUCTION FOR GRID WIDTH NOT LESS THAN 7/8" WITH NOT LESS THAN 5/16" PANEL BEARING SURFACE. THE GRID WILL BE COMPRISED OF 2' AND 4' TEES AND MAIN RUNNER CHANNEL. THE ANGLE ALONG WALLS SHALL MATCH THE REST OF THE GRID SYSTEM. CONTRACTOR WILL ALSO PROVIDE HANGER WIRES (ASTM A641) AND CONCRETE EXPANSION ANCHOR THAT WILL BE PRE DRILLED AND EXPAND WHEN PRESSURE IS EXERTED UPON THEM TO PREVENT SLIPPAGE. WHITE ACOUSTICAL CEILING TILE SHALL BE A WATERPROOF PLASTICS SIMILAR OR EQUAL TO PARKLAND PLASTICS - SPECTRA TILE WATERPROOF 2'x4' LAY IN TILE.

ELECTRICAL NOTES:

EL-1 CONTRACTOR TO SECURE THE FOLLOWING (EXISTING ITEMS THAT WILL NOT BE REMOVED) IN A SAFE AND OPERABLE MANNER BEFORE REMOVING GRID AND CEILING TILE: FLUORESCENT LIGHT FIXTURES, PA LOUDSPEAKERS, SMOKE DETECTORS, HVAC VENTS/EXCHANGERS, ELECTRICAL OUTLETS, WIRE MOLD, AND EMERGENCY EXIT SIGNS. IT WILL BE CONTRACTORS RESPONSIBILITY TO COORDINATE WITH COR, BEFORE THE DISABLING/RE-ENABLING OF SMOKE DETECTORS/FIRE ALARM ZONES DAILY PRIOR TO THE START OF WORK IN EACH AREA.

EL-2 CONTRACTOR SHALL SECURE FLUORESCENT LIGHTS INDEPENDENTLY TO STRUCTURAL CEILING WITH (ASTM A641) HANGER WIRE AND CONCRETE EXPANSION ANCHORS PRIOR TO REMOVING CEILING GRID AND TILE.

HVAC NOTES:

MH-1 TEST EXISTING 30" AIR DIFFUSER TO DETERMINED CFM AIR FLOW. REMOVE THE EXISTING 30" CIRCULAR AIR DIFFUSERS AND PROVIDE A NEW WHITE 2'x2' 4 WAY SUPPLY AIR DIFFUSER THAT FITS THE NEW CEILING GRID AND MEETS/EXCEEDS THE CFM AIR FLOW DESIGN SPECIFICATIONS THAT THE EXISTING AIR DIFFUSER'S DELIVER.

MH-2 MEASURE CFM OF AIR FLOW FOR EXISTING 4'x4' AIR RETURN AND PROVIDE NEW 4'x4' AIR RETURN (MATCHING/EXCEEDING EXISTING AIR FLOW CHARACTERISTICS).

GENERAL NOTE:

1. CONTRACTOR SHALL PERFORM ALL WORK OUTSIDE OF NORMAL BUSINESS HOURS.