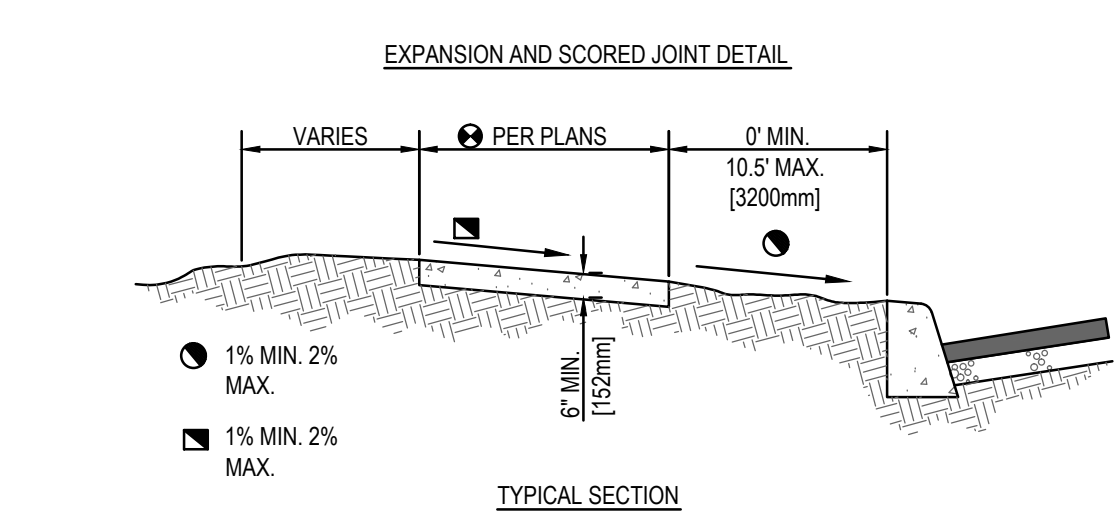
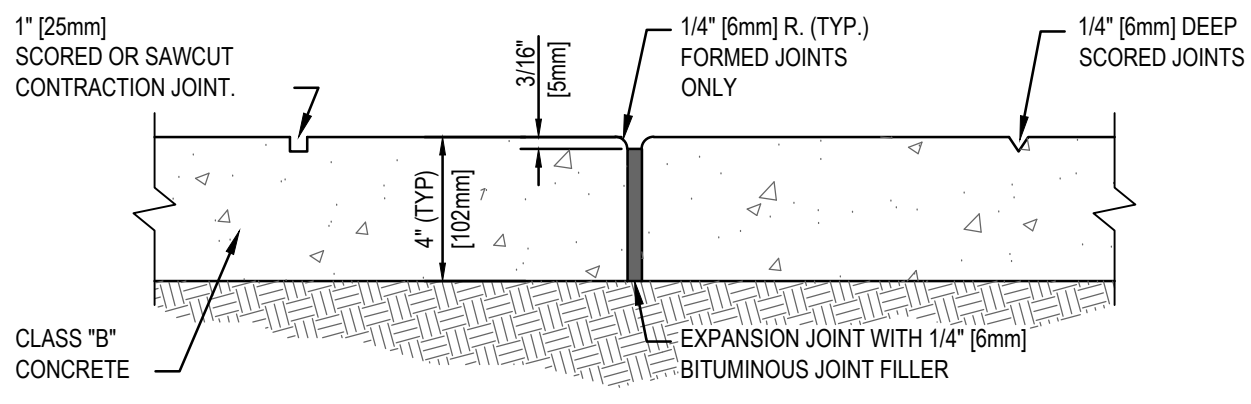
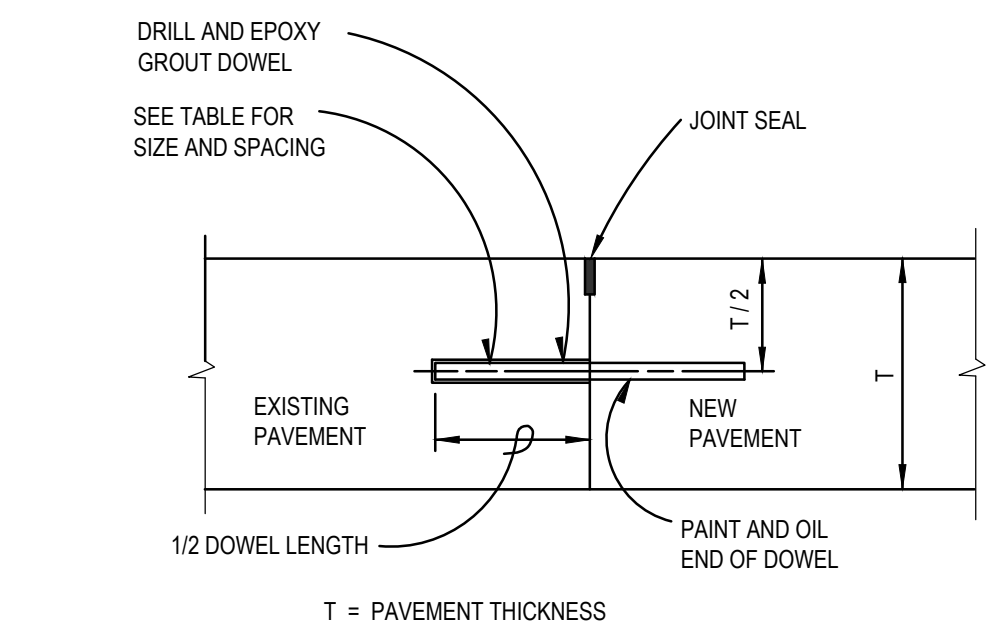


three inches = one foot
one and one-half inch = one foot
one inch = one foot
three-eighths inch = one foot
one-half inch = one foot
one quarter inch = one foot
one eighth inch = one foot
one quarter inch = one foot
one eighth inch = one foot

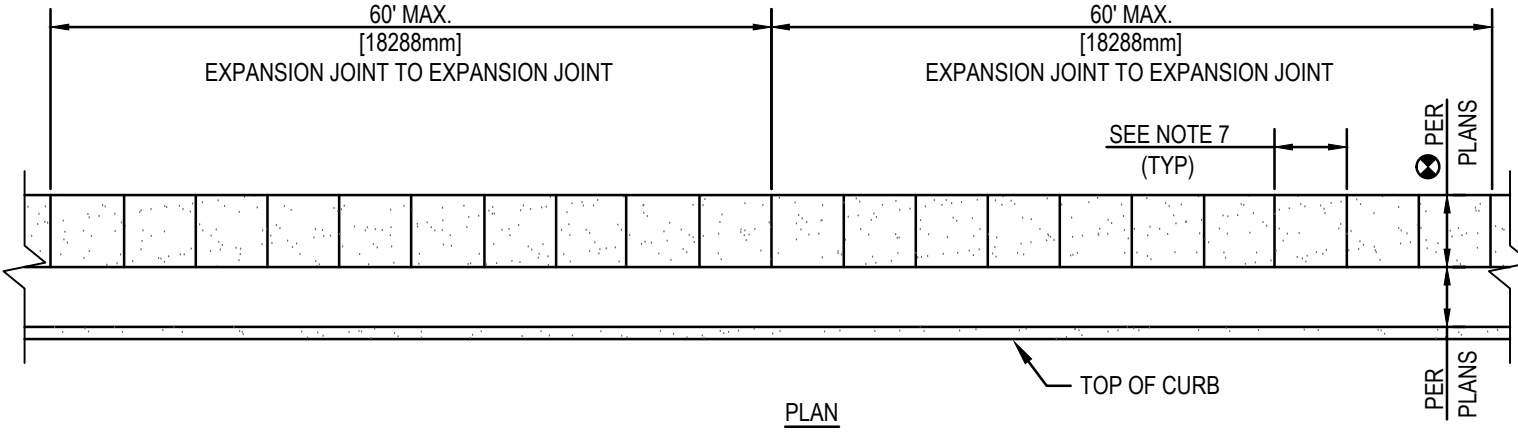


1 CONCRETE SIDEWALK
NO SCALE



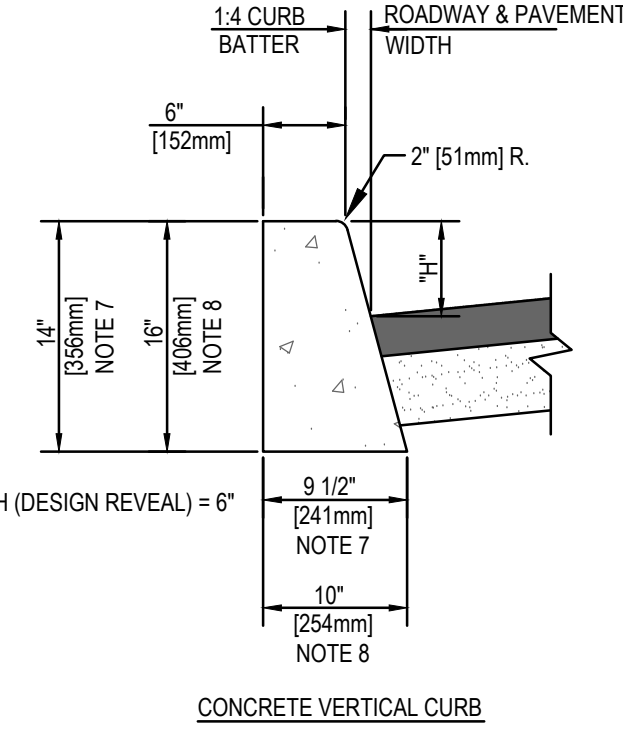
NOTES:
HOLES APPROXIMATELY 1/8 INCH GREATER IN DIAMETER THAN THE DOWELS SHALL BE DRILLED IN THE EXISTING CONCRETE AND THE DOWELS SHALL BE BONDED IN THE DRILLED HOLES USING AN EPOXY RESIN GROUT.

4 DOWELED JOINT BETWEEN NEW AND EXISTING CONCRETE PAVEMENT
NO SCALE



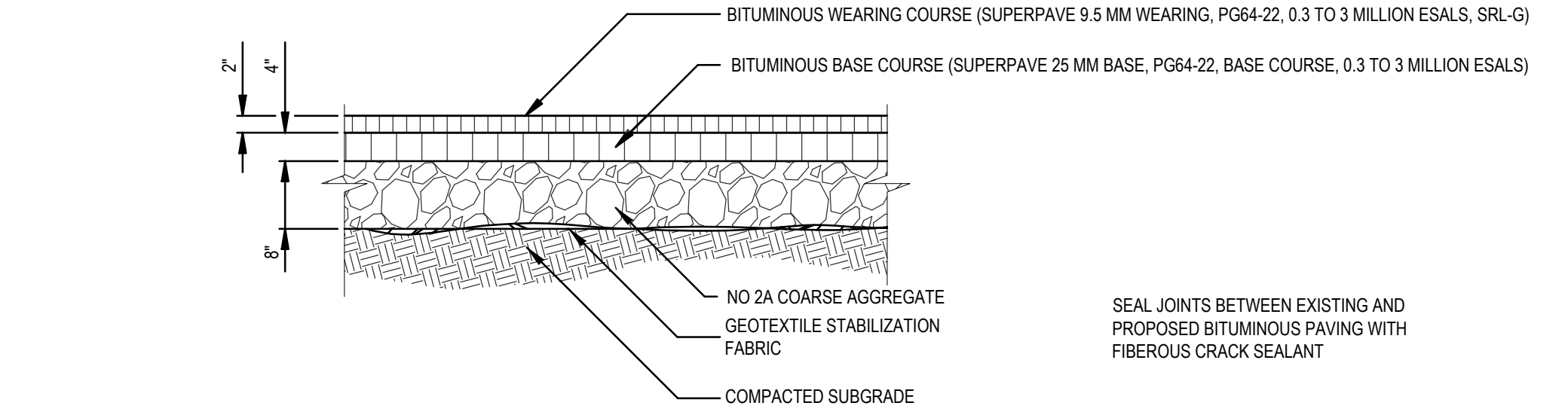
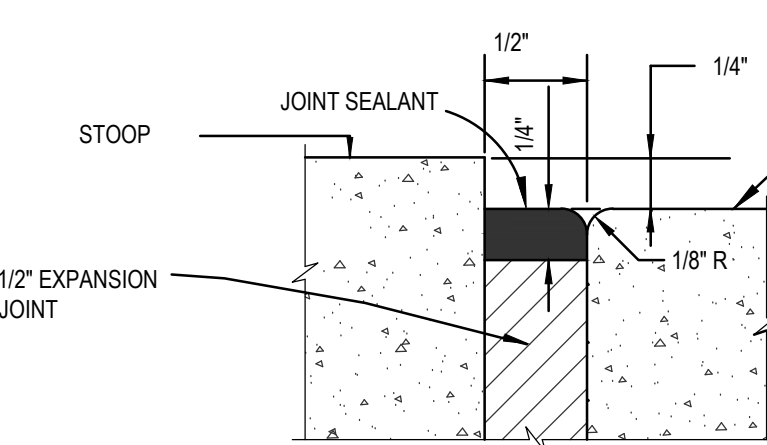
- NOTES:
- EXPANSION JOINTS SHALL BE LOCATED WHERE SIDEWALK ABUTS CONCRETE DRIVEWAYS, CURB OR OTHER ADJACENT STRUCTURES.
 - ONE-HALF INCH BITUMINOUS JOINT FILLER SHALL BE INSTALLED AT EXPANSION JOINT LOCATIONS AND SHALL EXTEND THE FULL DEPTH OF THE CONCRETE.
 - 1\"/>
 - FORMED CONTRACTION JOINTS SHALL BE FINISHED WITH A TOOL HAVING A 1/4\"/>
 - SCORED JOINTS SHALL BE 1/4\"/>
 - CONCRETE SHALL BE FINISHED BY MEANS OF A FLOAT, STEEL TROWELLED AND BROOMED WITH A FINE BRUSH IN A TRANSVERSE DIRECTION.
 - 1/4\"/>

2 CONCRETE CURB AND TERMINAL SECTION
NO SCALE

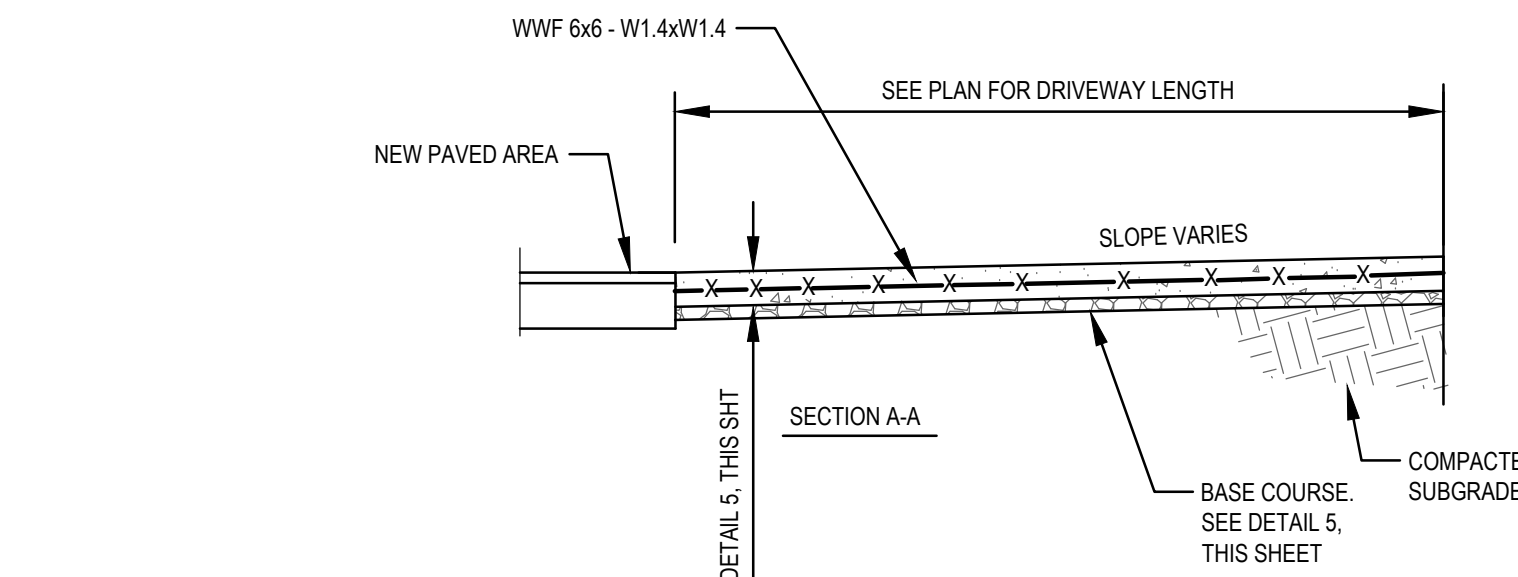
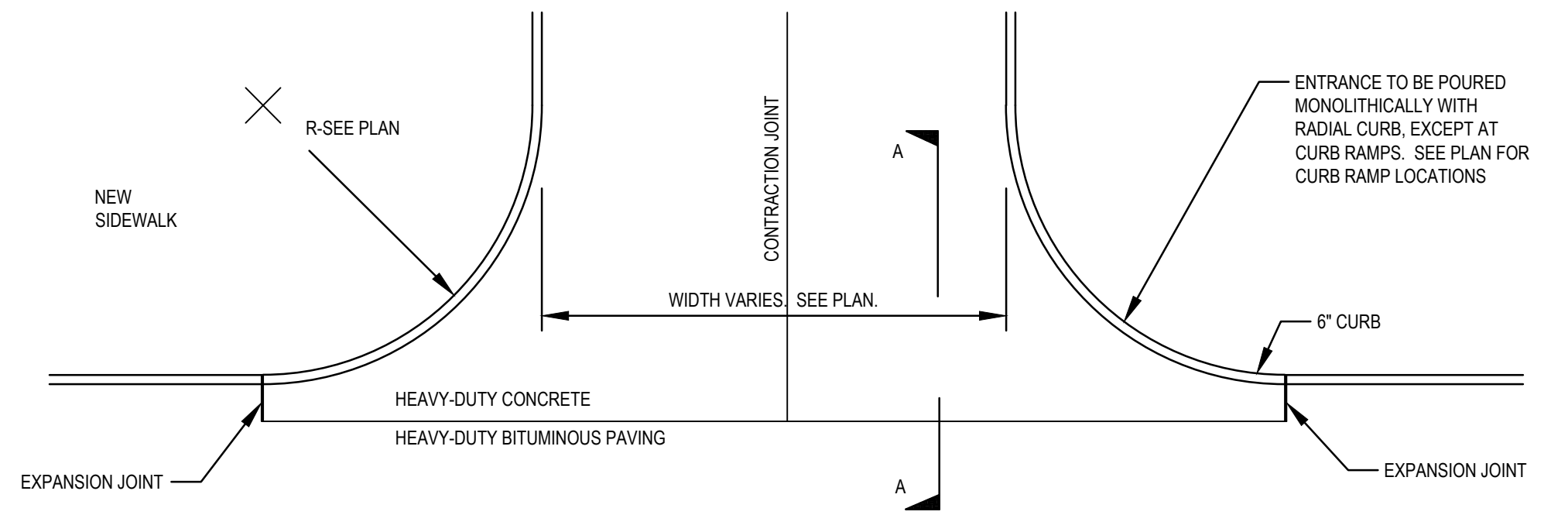


- NOTES:
- ALL CONCRETE CURBS AND TRANSITIONS, SHALL HAVE A MINIMUM COMPRESSIVE STRENGTH OF 2,500 PSI.
 - MAXIMUM SPACING ON SCORED JOINTS SHALL BE 15\"/>
 - 1/2\"/>
 - CONCRETE SHALL BE FINISHED WITH A STEEL TROWEL FOLLOWED BY BRUSHING WITH A FINE BRUSH ALONG THE LENGTH OF THE CURB OR CURB AND GUTTER.
 - SINGLE CURB MAY BE CONSTRUCTED BY THE USE OF FORMS OR MAY BE SLIP FORMED.
 - ALL EXPOSED EDGES AND HAND TOOLED JOINTS SHALL BE FINISHED WITH A TOOL HAVING A 1/4\"/>
 - FOR REVEALS OF 6\"/>

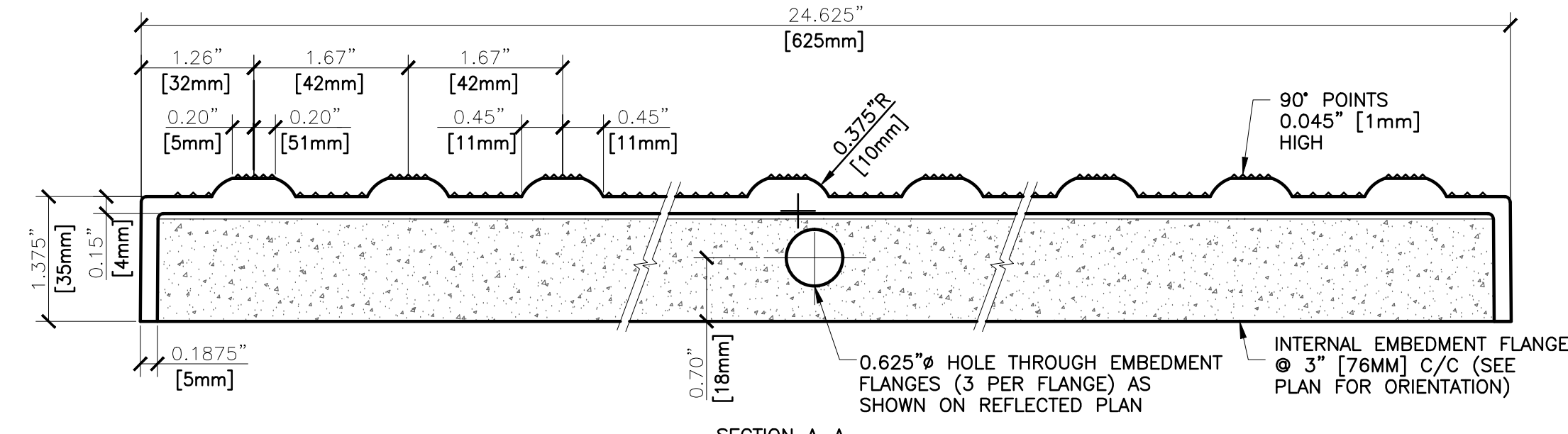
6 SIDEWALK-STOOP INTERFACE
NO SCALE



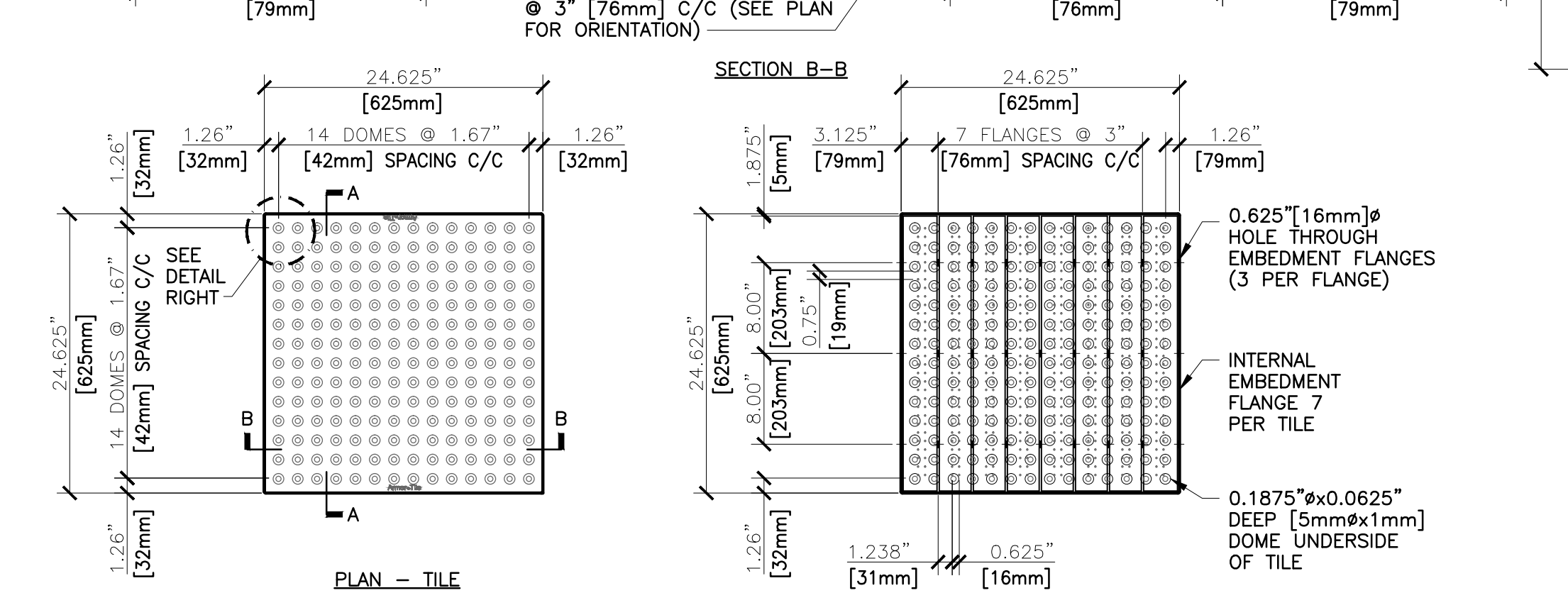
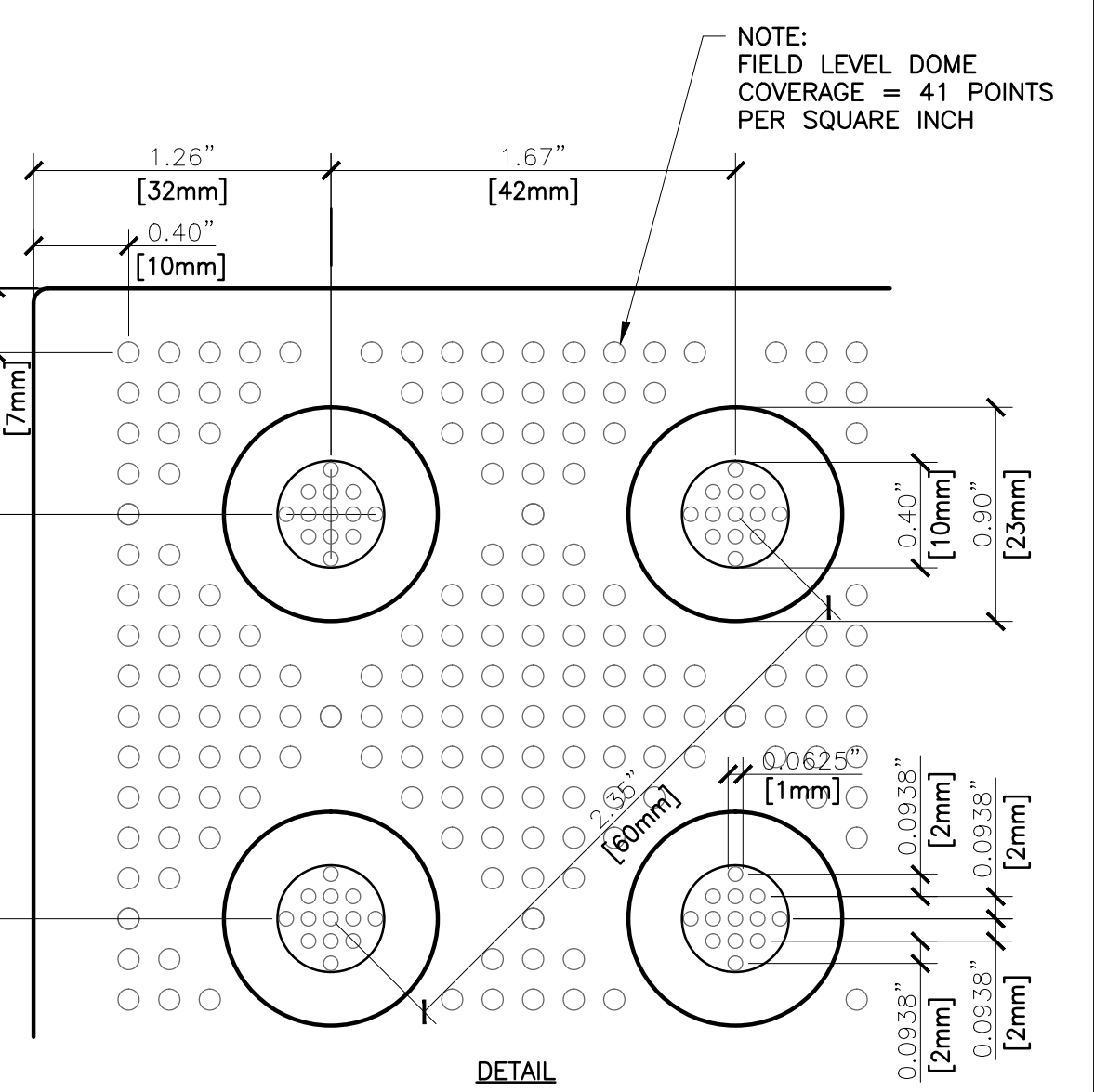
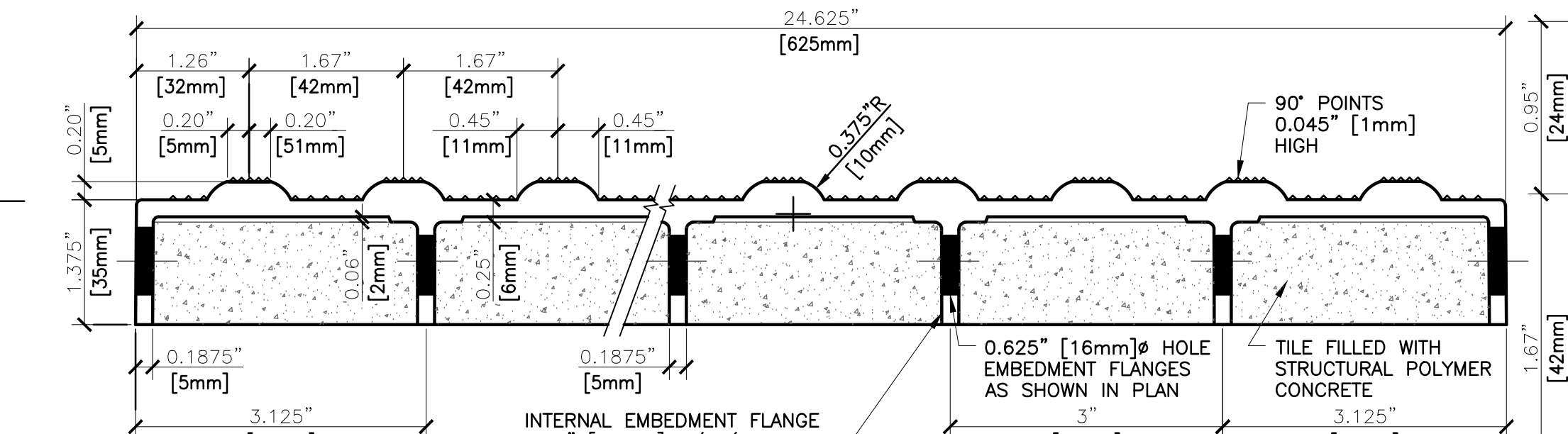
3 HEAVY DUTY BITUMINOUS PAVING SECTION
NO SCALE



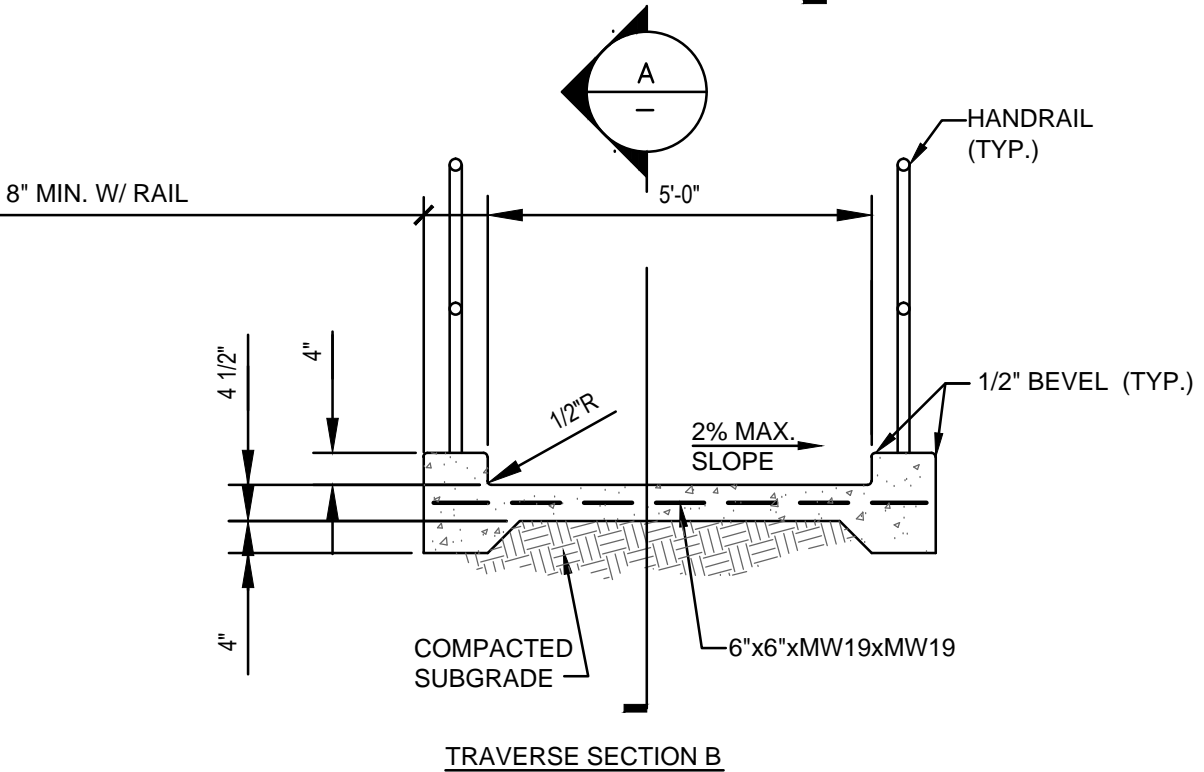
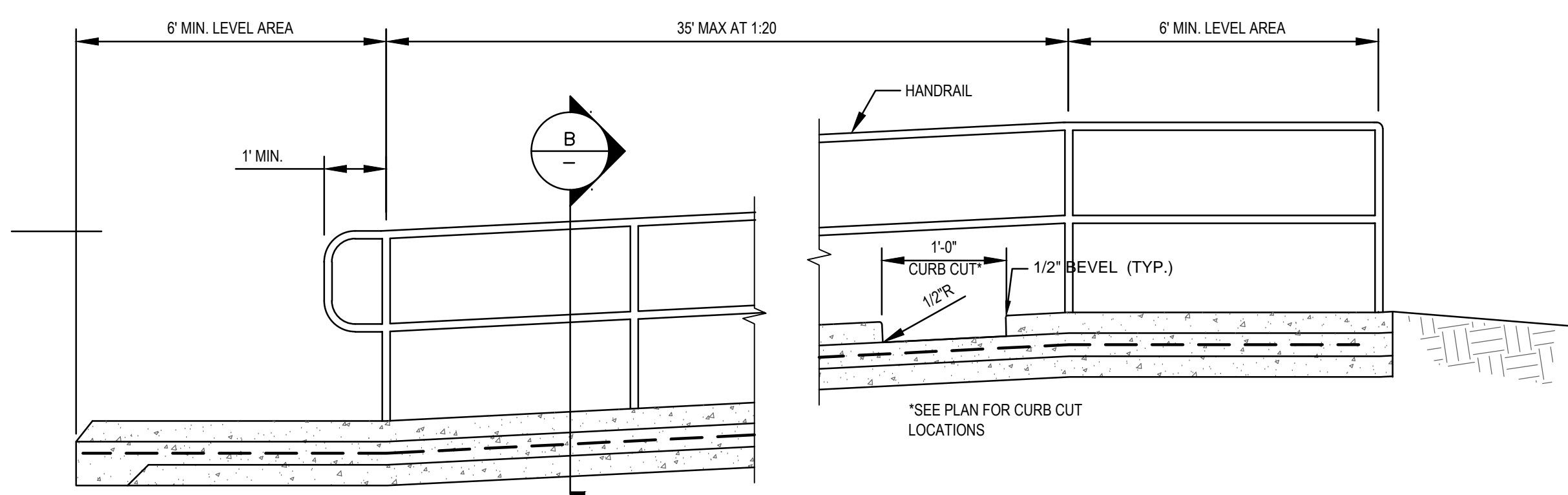
7 CONCRETE ENTRANCE
NO SCALE



DETECTABLE WARNING NOTES:
THE DETECTABLE WARNING STRIP MUST COVER THE ENTIRE WIDTH OF THE RAMP OPENING, EXCLUDING THE WINGS. ALL DOMES MUST BE ALIGNED IN THE DIRECTION OF TRAVEL. ONE CORNER OF THE LEADING EDGE OF THE DETECTABLE WARNING MAY BE MORE THAN 5 FEET FROM THE BACK OF THE CURB. WHEN LOCATED ALONG A CURB RETURN, THE LEADING EDGE OF THE DETECTABLE WARNING MAY BE DEFINED BY THE CHORD DRAWN BETWEEN THE LEADING EDGES OF THE RAMP OPENING.



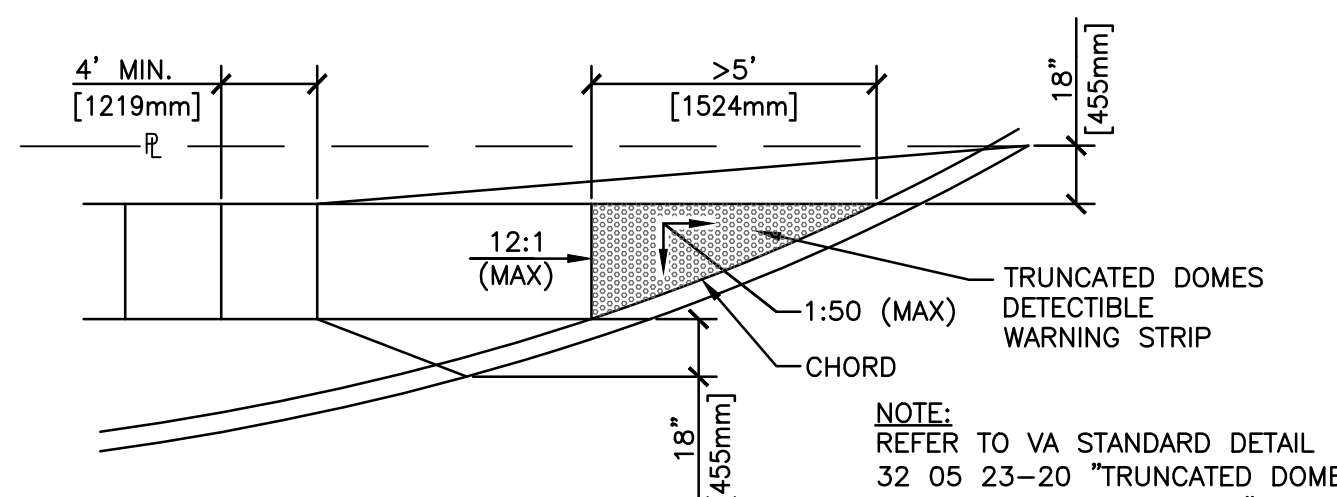
11 TRUNCATED DOME TACTILE - WARNING STRIP
NO SCALE



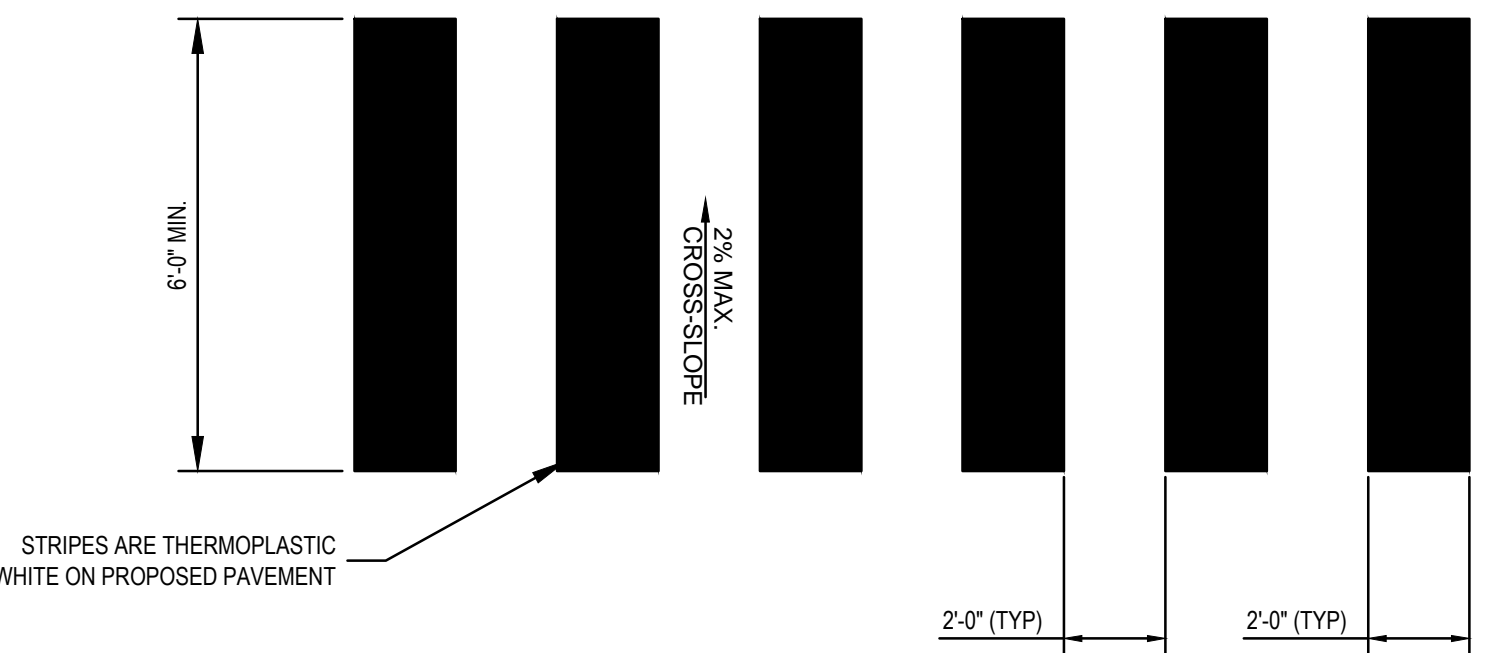
8 RAMP FOR DISABLED PERSONS
NO SCALE

LONGITUDINAL SECTION A

- NOTE:
- RAMP IS REQUIRED WHERE THE WALK EXCEEDS 3%.
 - IF A RAMP RUN HAS A RISE GREATER THAN 6\"/>
 - MAXIMUM SLOPE OF RAMP SHALL NOT EXCEED 5%.
 - SEE ARCHITECTURAL STANDARDS FOR HANDRAIL DETAILS.
 - PROVIDE AN AGGREGATE BASE WHERE SUBSURFACE CONDITIONS WARRANT IT.

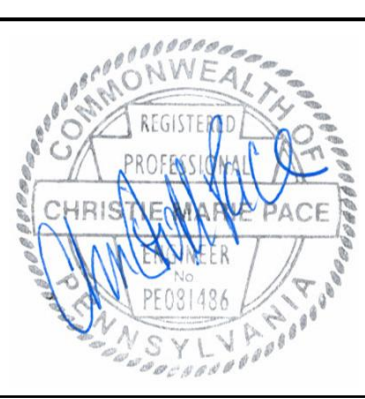


9 CURB ACCESS RAMP
NO SCALE



10 CROSSWALK STRIPING
NO SCALE

ARCHITECTS/ENGINEERS:



A/E works

6587 HAMILTON AVENUE
PITTSBURGH, PA 15206
PH: 412.287.7333 FAX: 412.287.7334
www.ae-works.com

Drawing Title

SITE DETAILS

Approved: Project Director

Project Title
**BUILDING 9 -
SECOND FLOOR RENOVATION**

Location 1400 Blackhorse Hill Road
Coatesville, PA 19320

Date
05/12/14

Checked
RB

Drawn
CMP

Project Number
542-13-105

Building Number
9

Drawing Number

CS151

Dwg. 14 of 125

**Office of
Construction
and Facilities
Management**

