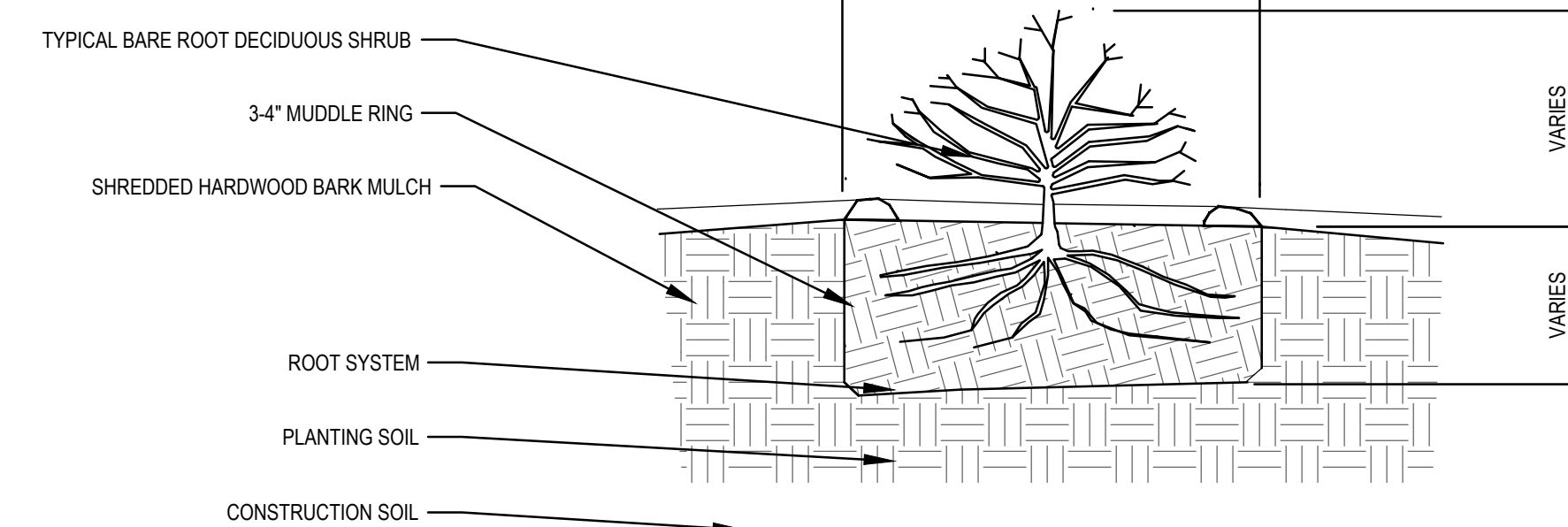
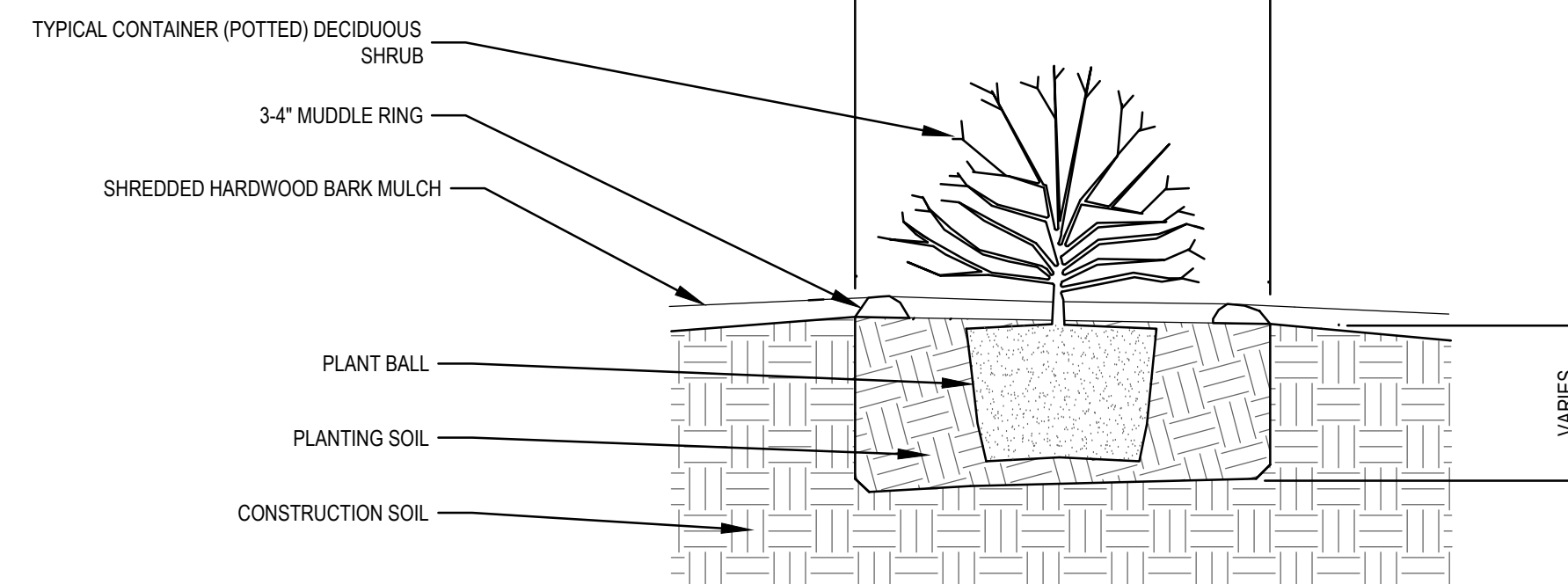


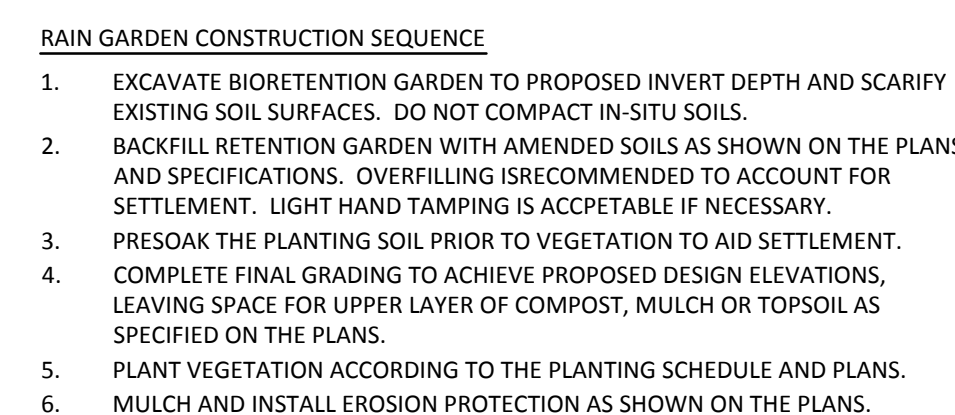
2 BALL & BURLAPPED (B&B) DETAIL



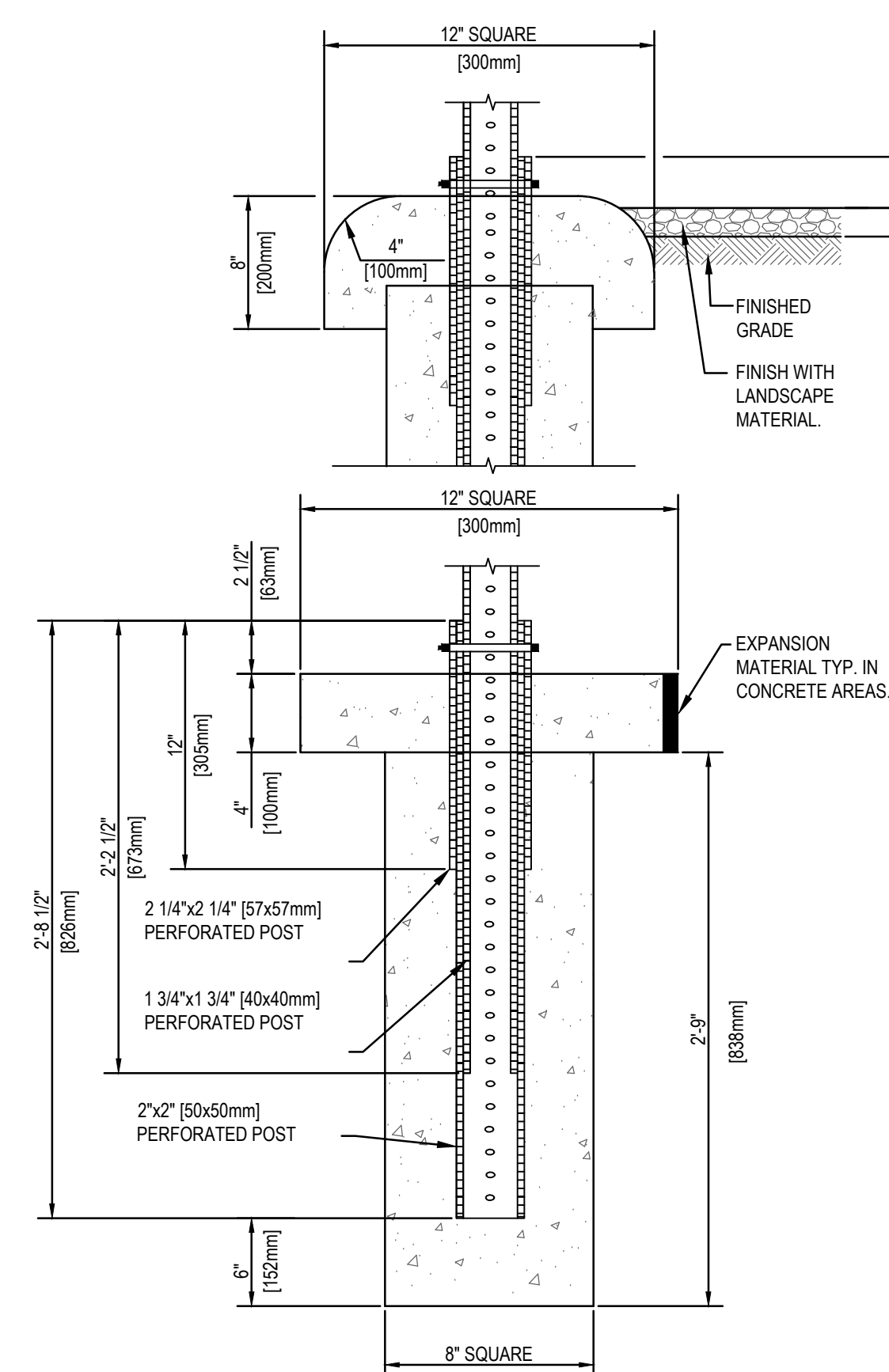
3 BARE ROOT PLANTING DETAIL



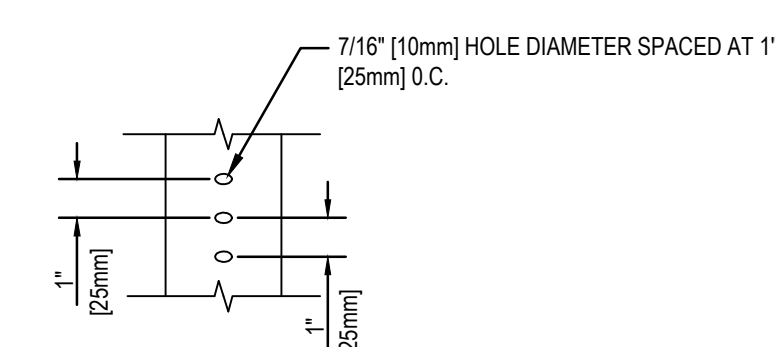
4 CONTAINER SHRUB PLANTING DETAIL



5 RAIN GARDEN SECTION

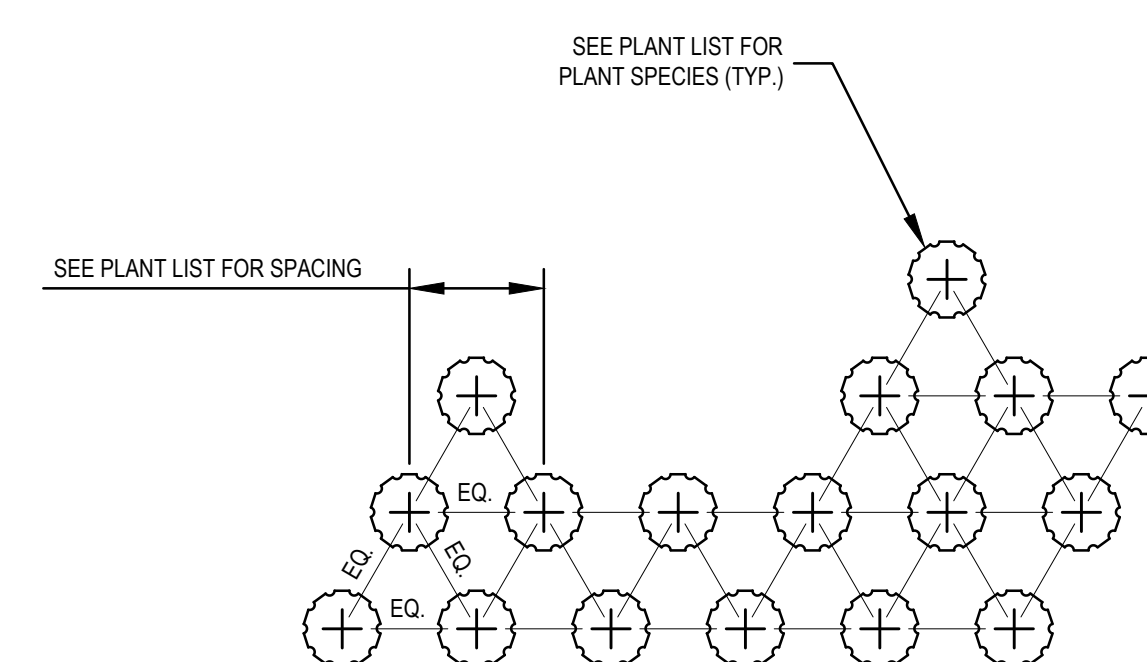


6 SIGN POST DETAIL SQUARE TUBE FOUNDATION
NO SCALE



- MATERIALS:**
- PERFORATED POSTS SHALL BE SQUARE TUBE FORMED FROM 0.105 U.S.S. GAUGE ASTM A36 COLD ROLLED CARBON STEEL. THE SQUARE TUBES SHALL BE WELDED DIRECTLY IN THE CORNER BY HIGH FREQUENCY RESISTANCE WELDING OR GUN. THE POSTS SHALL BE EXTERNALLY SCAFFED TO AGREE WITH STD. CORNER RADIUS OF 5/32" (4mm) TO 1/8" (3mm).
 - PERFORATED POSTS SHALL BE GALVANIZED TO CONFORM TO ASTM A-525. COATING DESIGNATION G-40.
 - ALL HARDWARE SHALL CONFORM TO ASTM A-307 CLASS A.
 - ALL HARDWARE SHALL BE GALVANIZED TO CONFORM TO ASTM A-153 OR CADMIUM PLATED TO CONFORM TO ASTM A-165.
 - ALL CONCRETE SHALL BE 2500 PSI.

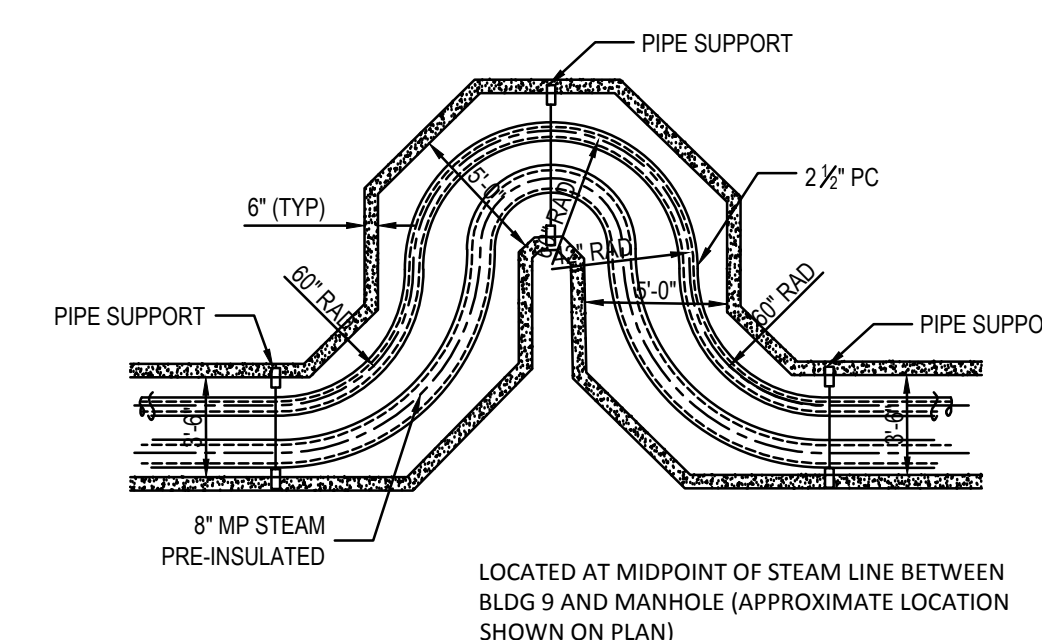
- NOTES:**
1. FOUNDATION WILL BE CONSTRUCTED WITH 1 3/4"x1 3/4" STARTER SIGN POST. STARTER SIGN POST SHALL BE REMOVED AFTER CONCRETE HAS SET AND EXPOSED SQUARE TUBING WRAPPED AND SEALED WITH DUCT TAPE.
 2. FOUNDATION LOCATED 1' FROM EDGE OF PAVEMENT.
 3. FOUNDATION LOCATION TO BE APPROVED BY ENGINEERING.
 4. POST FOUNDATIONS SHALL BE PERPENDICULAR TO THE PAVED SURFACE.
 5. BOLT WITH NUT AND LOCK WASHER TO BE 7/16"x3" GALVANIZED.
 6. REFER TO SIGN POST LOCATION DETAIL, DETAIL 4, THIS SHEET FOR INSTALLATION LOCATION.



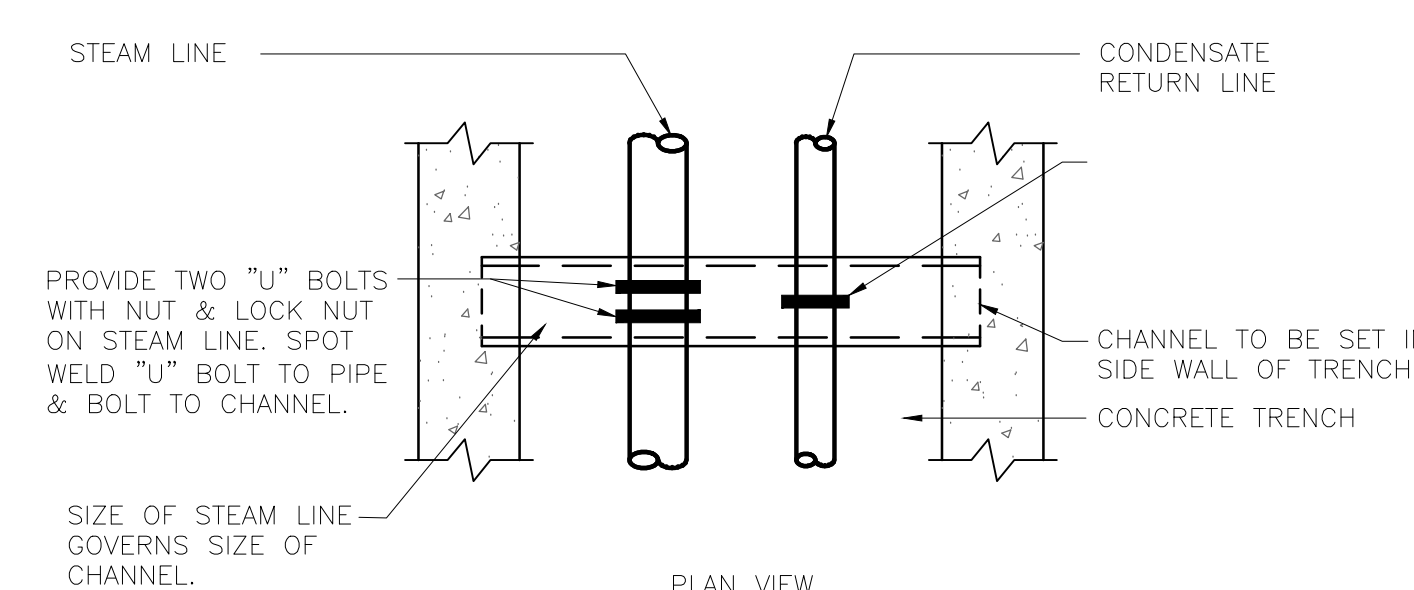
PLAN

PLANT SPACING DIAGRAM

NO SCALE

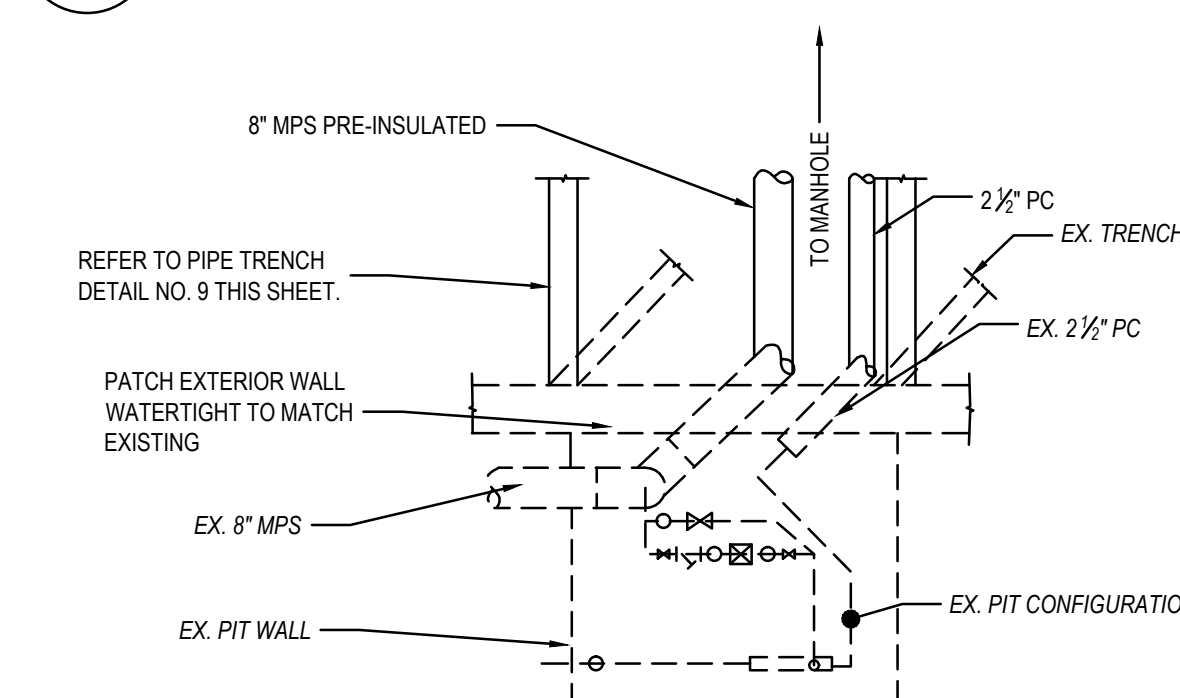


8 PLAN DETAIL OF "U" BEND
NO SCALE

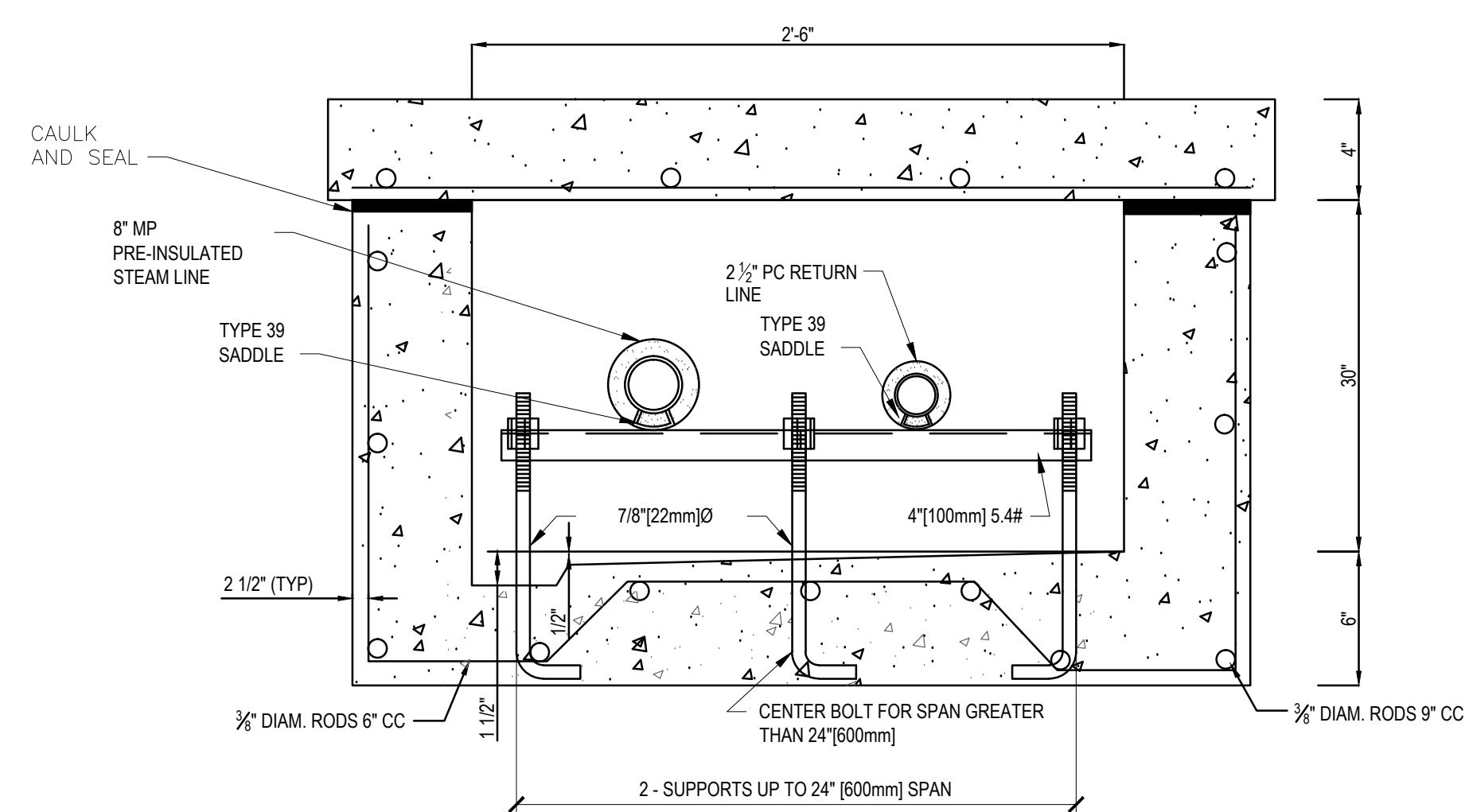


SCHEDULE		
SIZE OF PIPE INCH [mm]	SIZE OF "U" BOLT INCH [mm]	SIZE OF CHANNEL INCH [mm]
1 - 2 [25 - 50]	3/8 [10] DIA.	6 x 10.5 [150x265]
2-1/2 - 5 [65 - 125]	1/2 [15] DIA.	8 x 13.75 [200x340]
6 - 8 [150 - 200]	3/4 [20] DIA.	10 x 20 [250x500]



ANCHOR INSTALLATION STEAM/CONDENSATE PIPING IN TRENCH



10 STEAM ENTRANCE PIT AT BLDG 9
NO SCALE



9 CONCRETE PIPE TRENCH BETWEEN BLDG NO 9 & MH (MATCH EXISTING)
NO SCALE

		<div>CONSULTANTS:</div>	<div></div>	<div>ARCHITECTS/ENGINEERS:</div> <div><div>A E works</div><div>6587 HAMILTON AVENUE PITTSBURGH, PA 15206 PH: 412.287.7333 FAX: 412.287.7334 www.ae-works.com</div></div>	<div>Drawing Title</div> <div>SITE DETAILS</div>	<div>Project Title</div> <div>BUILDING 9 - SECOND FLOOR RENOVATION</div>	<div>Project Number</div> <div>542-13-105</div>	<div>Office of Construction and Facilities Management</div> <div> Department of Veterans Affairs</div>
					<div>Building Number</div> <div>9</div>	<div>Drawing Number</div> <div>CS152</div>	<div>Dwg.</div> <div>15 of 125</div>	
					<div>Approved:</div> <div>Project Director</div>	<div>Location</div> <div>1400 Blackhorse Hill Road Coatesville, PA 19320</div>		
					<div>Date</div> <div>05/12/14</div>	<div>Checked</div> <div>RB</div>	<div>Drawn</div> <div>CMP</div>	
<div>Revisions:</div>	<div>Date</div>							