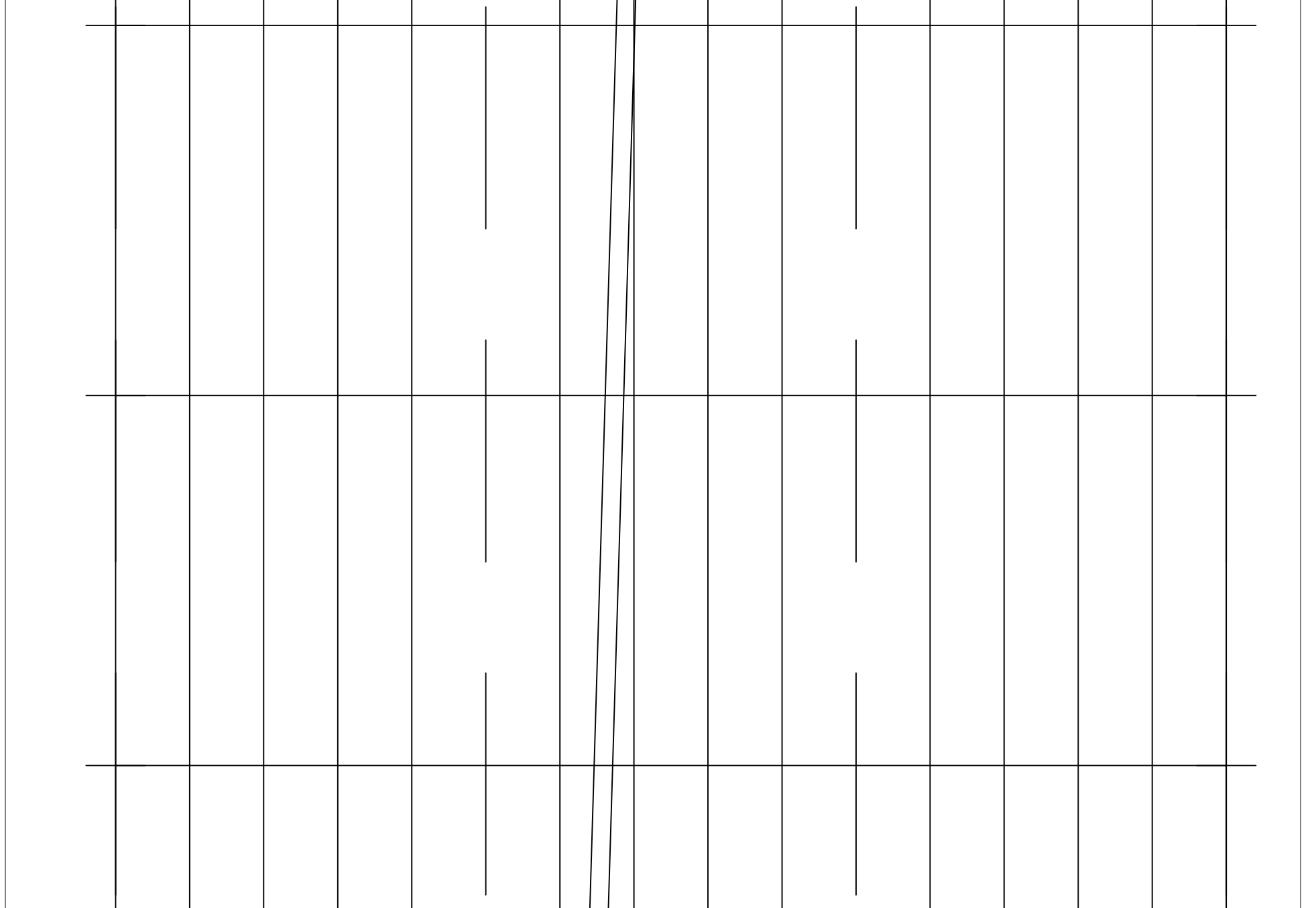
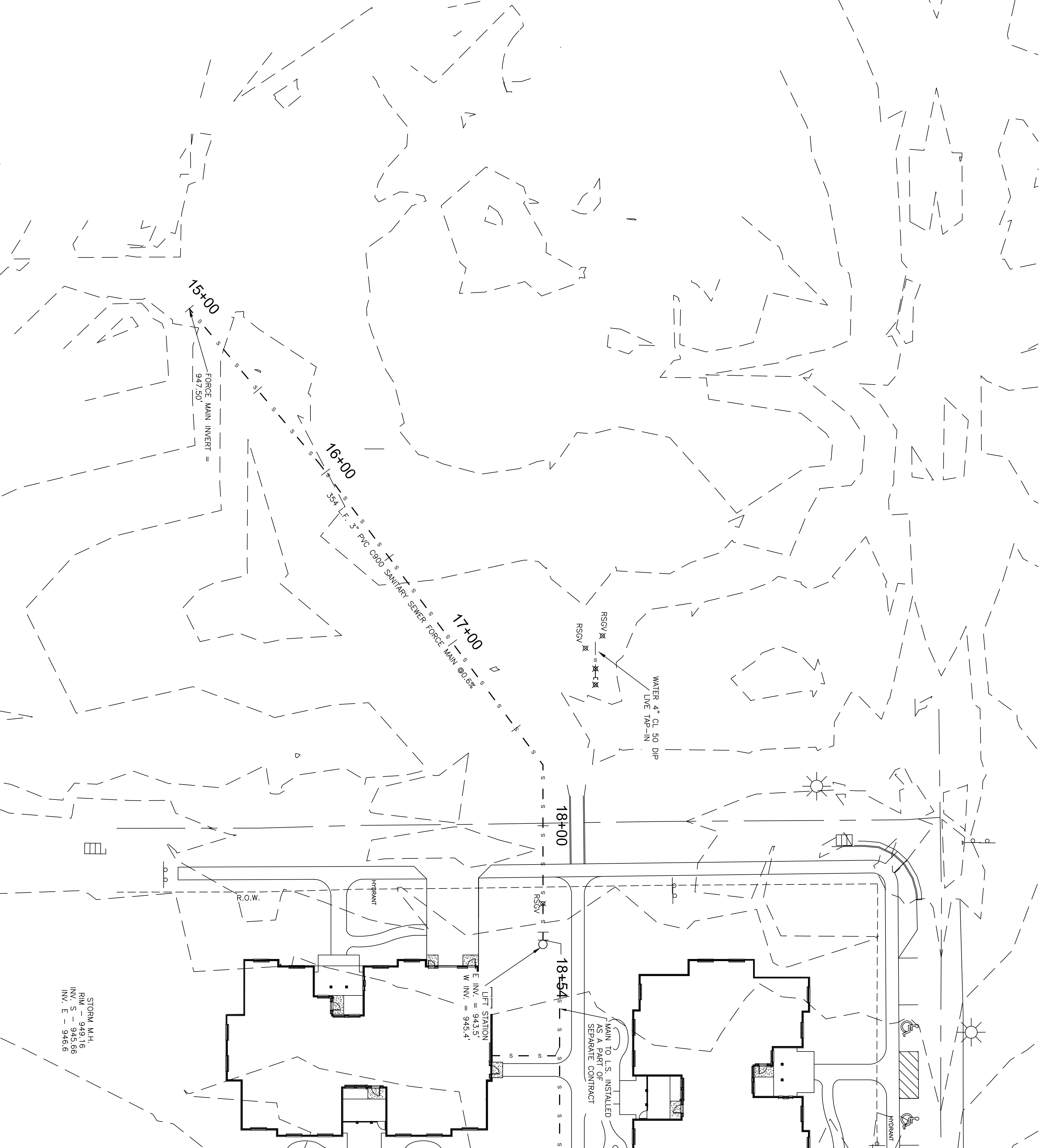
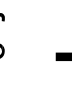



— 0 — 0 — 0 — 0 — 0 — EXISTING GAS LINE
— 1 — 1 — 1 — 1 — 1 — EXISTING COMMUNICATIONS LINE
E ELECTRICAL PEDESTAL
— ST — ST — ST — ST — EXISTING STORM SEWER
— S — S — S — S — EXISTING SANITARY SEWER



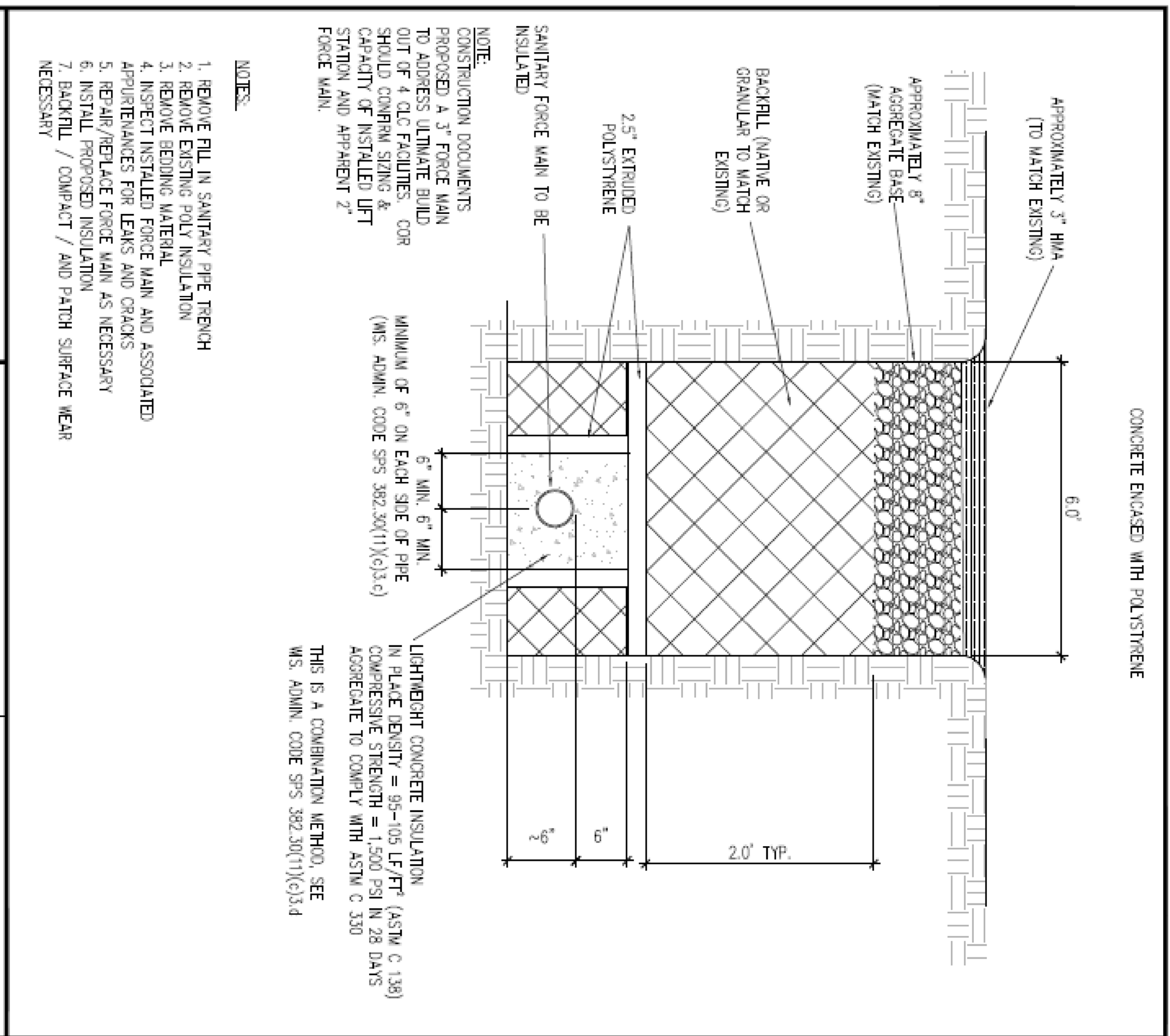
Date	07/31/2014
Project No.	676-14-049
SHEET:	P-1
Dwg. 2 of 3	



Office of Facilities



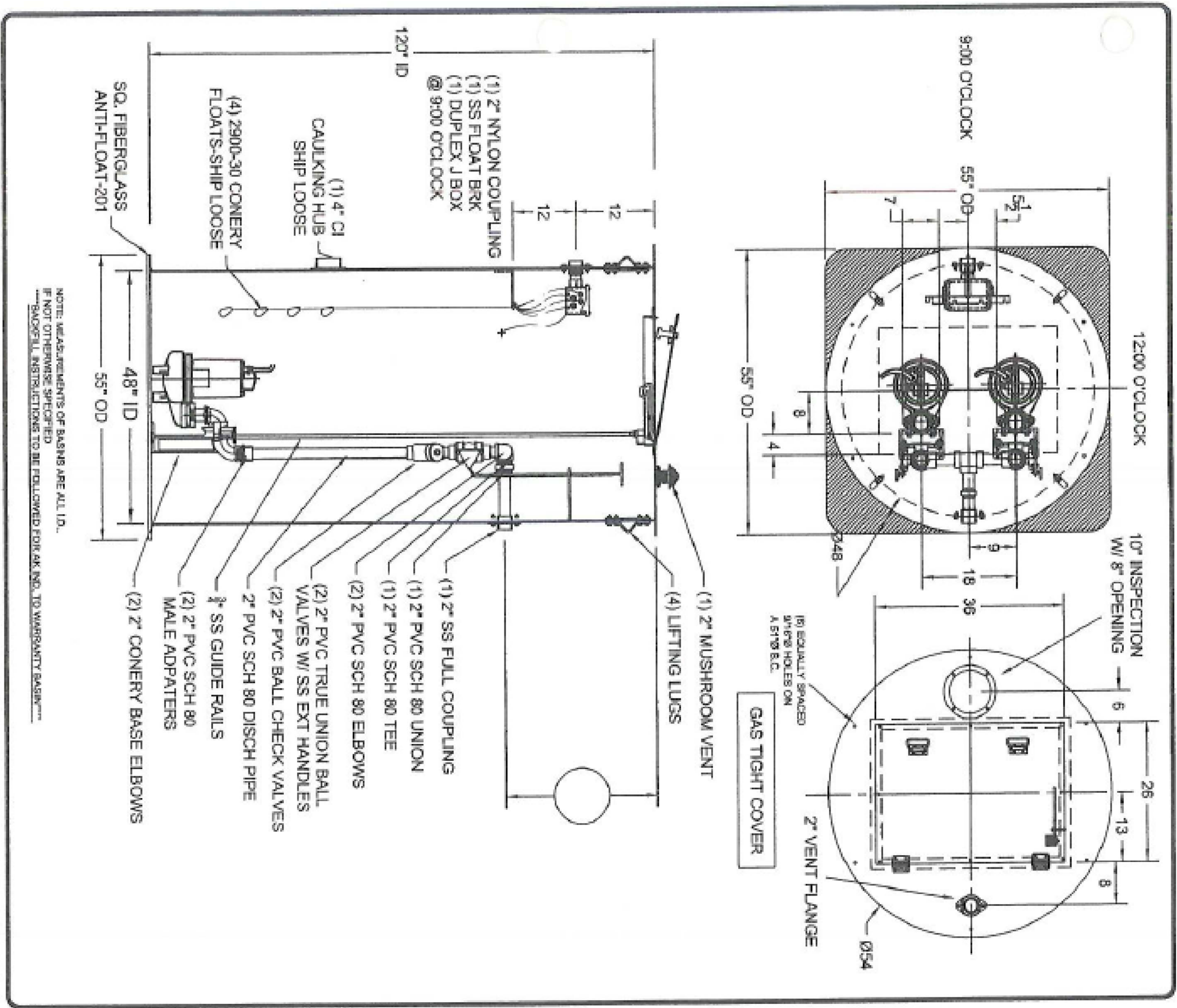
**Department of
Veteran Affairs**



1. Remove blacktop asphalt, excavate and remove fill from sanitary main pipe trench. This is approximately 360 feet.
2. Provide steel vehicle drive over plates to facilitate traffic to pass over the trench
3. Remove existing poly insulate.
4. Remove bedding material.
5. Inspect forced sanitary main for cracks and leaks. Inspect lift station outlet pipe connections.
6. Repair forced main as necessary.
7. Install lightweight air entrained insulation concrete as per site plan.
8. Install 2.5 inch thick extruded polystyrene insulation as per site plan.
9. Install bedding material and backfill. Compact all material as required.
10. Install blacktop asphalt tipping as removed per site plan.
11. Provide inspection report and as built drawings as required.

SEWER MAIN SECTION

NTS

[illegible]

LIFT STATION DETAIL

NTS

Drawing Title NEW INSULATION WORK-SECTION/DETAIL	Project Title INSULATE UTILITY MAIN FROM GREENHOUSES		Date 07/31/2014
	Project No. 676-14-049		
Approved Division Chief	Building Number Site	Checked CK	Drawn
Approved Service Director	Location VA MEDICAL CENTER, TOMAH WA	SHEET: P-2 Dwg. 3 of 3	